

Hui Zhou Gaoshengda Technology WXT42S WIFI Plus BT Module



Hui Zhou Gaoshengda Technology WXT42S WIFI Plus BT Module User Manual

[Home](#) » [Hui Zhou Gaoshengda Technology](#) » Hui Zhou Gaoshengda Technology WXT42S WIFI Plus BT Module User Manual

Contents

- 1 Hui Zhou Gaoshengda Technology WXT42S WIFI Plus BT Module
- 2 Product Information
- 3 Product Usage Instructions
- 4 Supplementary information
- 5 Documents / Resources
 - 5.1 References
- 6 Related Posts

Hui Zhou

Gaoshengda Technology

Hui Zhou Gaoshengda Technology WXT42S WIFI Plus BT Module



Product Information

Specifications

The product consists of a PCB antenna with the following dimensions:

- Layout: Trace design with parts, antenna, connectors, and isolation requirements
- Dimension: 0.33mm x 0.33mm
- RF trace between module RF pinout to antenna width: 0.8mm
- RF trace between module and antenna impedance: 0ohm
- IPEX Connector Information:
 - Size: Connector 1 IPEX Male 50-pin
 - Surface mount: Varies

Product Usage Instructions

Section 1: Installation

To install the product, follow these steps:

1. Ensure that the product is compatible with your device.
2. Locate the RF pinout on your module and identify the RF trace.
3. Connect the RF trace to the antenna using a width of 0.8mm.
4. Ensure that the RF trace between the module and antenna has an impedance of 0 ohm.
5. If required, mount the IPEX connector on your device using the appropriate surface mount method.

Section 2: Design Integration

If you intend to use our antenna design as a reference for your own design, please note the following:

- Your own design should replicate the layout and dimensions provided in our specifications.
- The performance of your antenna should match the performance of our antenna.

FAQ (Frequently Asked Questions)

- Q1: What are the dimensions of the PCB antenna?

The PCB antenna has dimensions of 0.33mm x 0.33mm.

- Q2: What is the width of the RF trace between the module RF pinout and the antenna?

The width of the RF trace between the module RF pinout and the antenna is 0.8mm.

- Q3: What is the impedance of the RF trace between the module and the antenna?

The impedance of the RF trace between the module and the antenna is 0ohm.

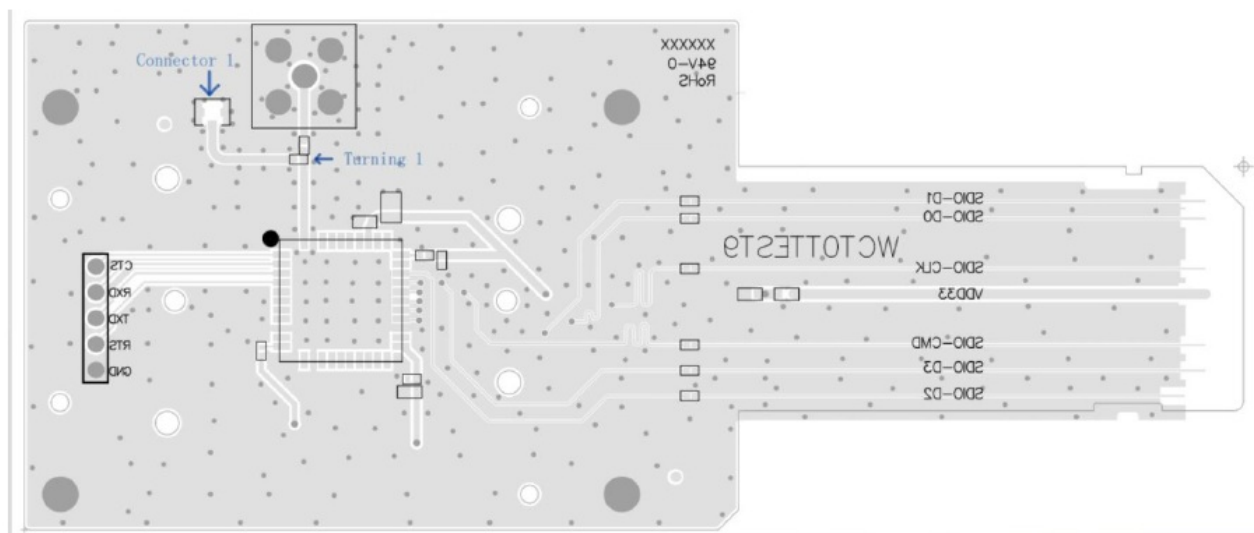
- Q4: What type of connector is used for the antenna?

The antenna uses an IPEX Male 50 pin connector.

Supplementary information

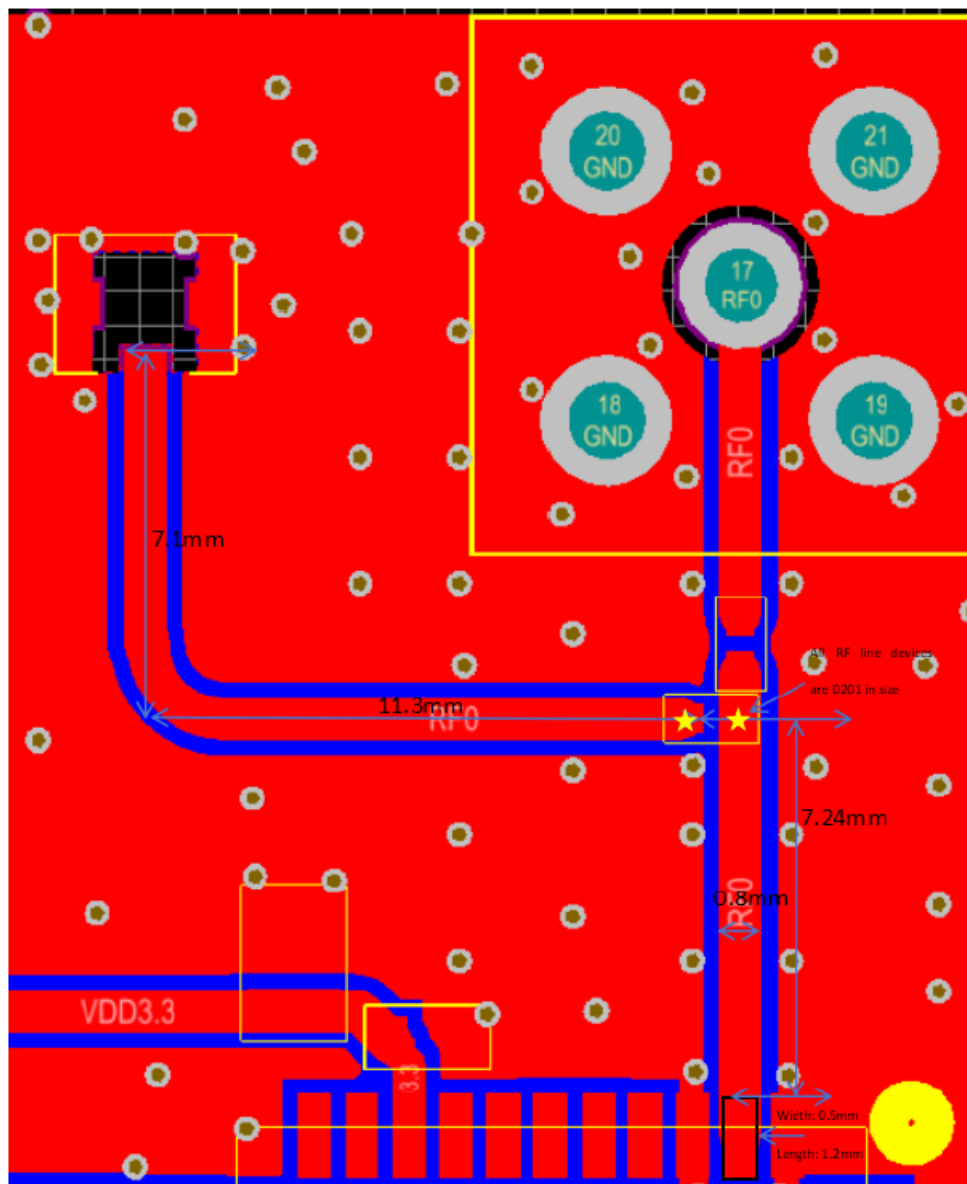
Trace layout and dimensions including specific designs for each type:

1. Layout of trace design, parts, antenna, connectors, and isolation requirements



2. Boundary limits of size, thickness, length, width, shape(s), dielectric contain, and impedance must be clearly described for each type of antenna:

PCB Antenna trace antenna Dimension:



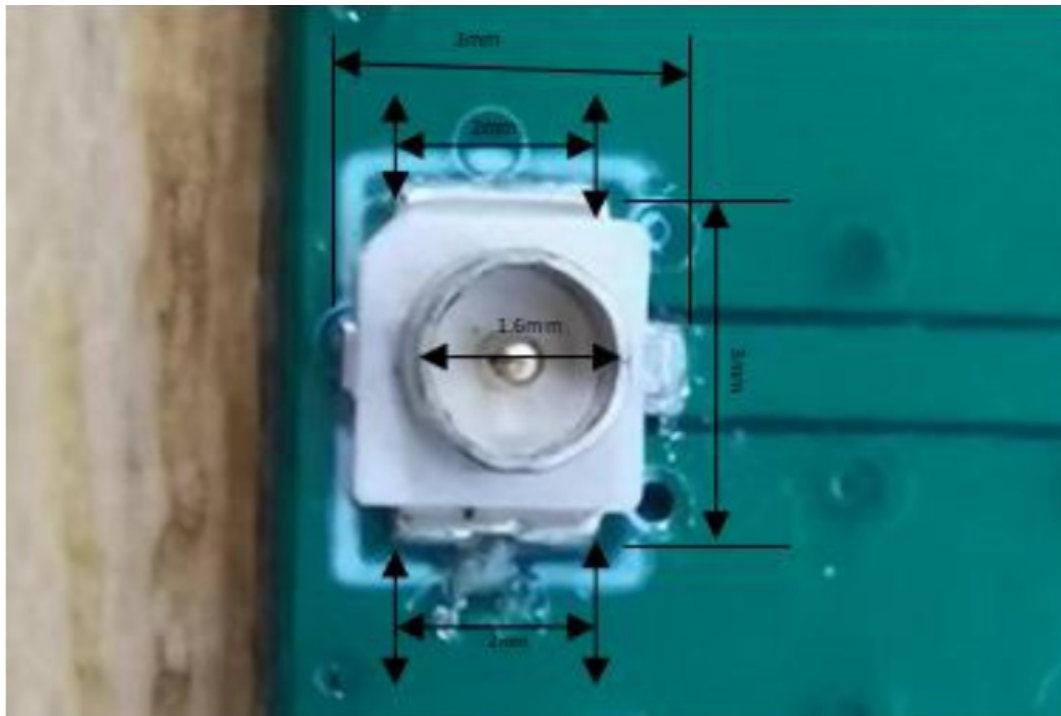
0.33*0.33mm

Note:

1. RF trace between module RF pinout to antenna width is 0.8mm.
2. RF trace between module and antenna impedance is 0ohm.

IPEX connector information:

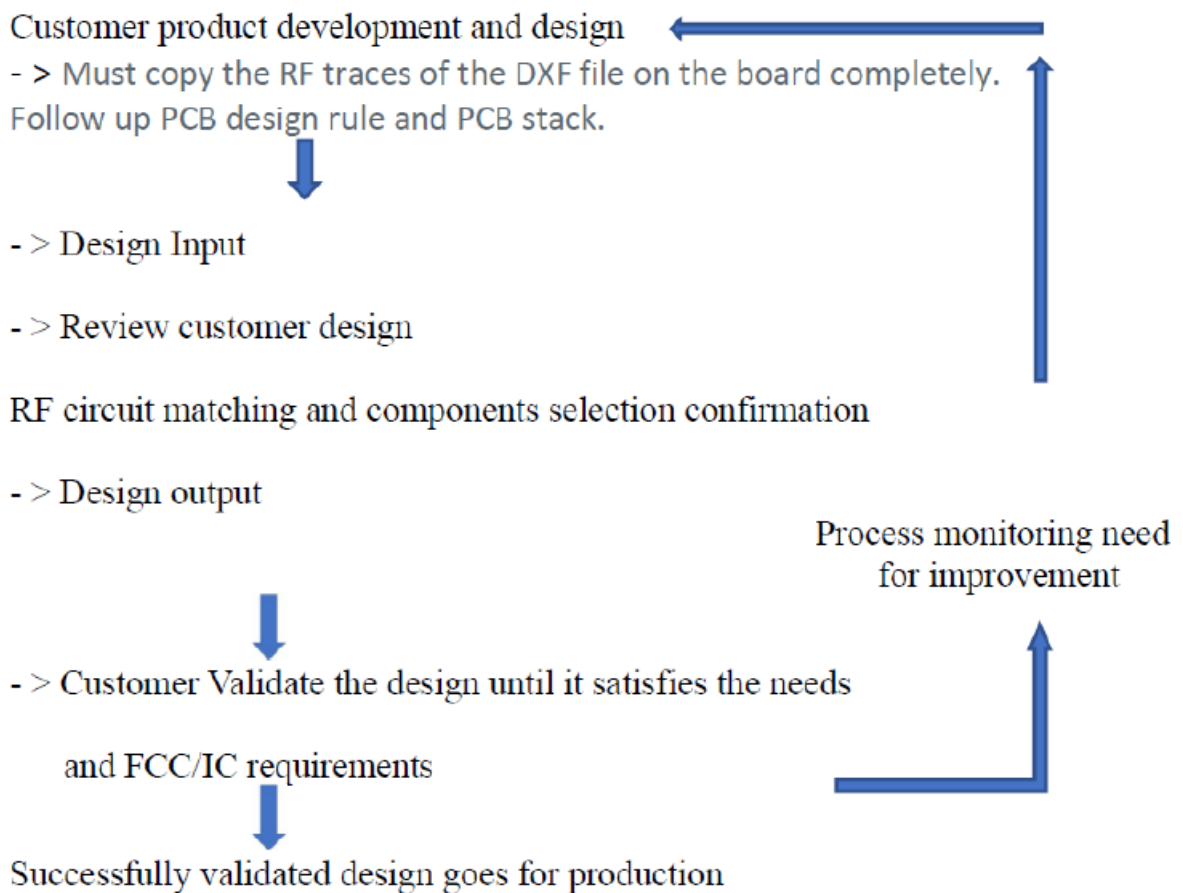
Size:



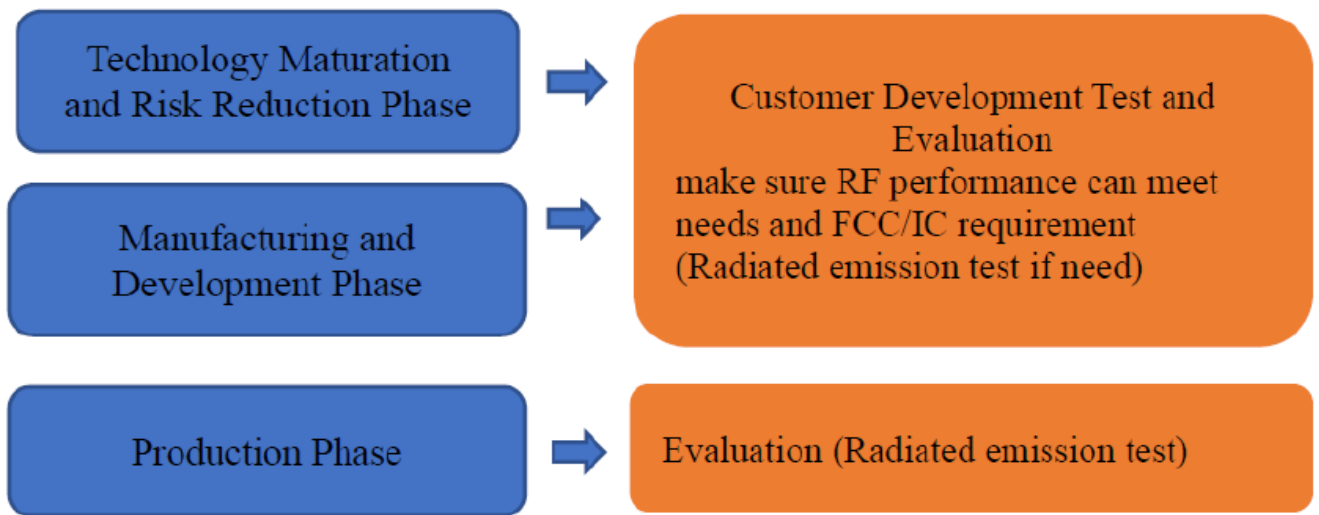
Appropriate parts of manufacturers and specifications:

Information about devices on RF lines:


If customers completely refer to our antenna design for their own design, the antenna performance should also be the same as ours.



Production test procedures for ensuring compliance



Documents / Resources

	Hui Zhou Gaoshengda Technology WXT42S WIFI Plus BT Module [pdf] User Manual 2AC23-WXT42S, 2AC23WXT42S, WXT42S, WXT42S WIFI Plus BT Module, WIFI Plus BT Module, BT Module, Module
--	---

References

- [User Manual](#)