

HUDSON Fog Atomizer Sprayers Instructions

[Home](#) » [HUDSON](#) » HUDSON Fog Atomizer Sprayers Instructions

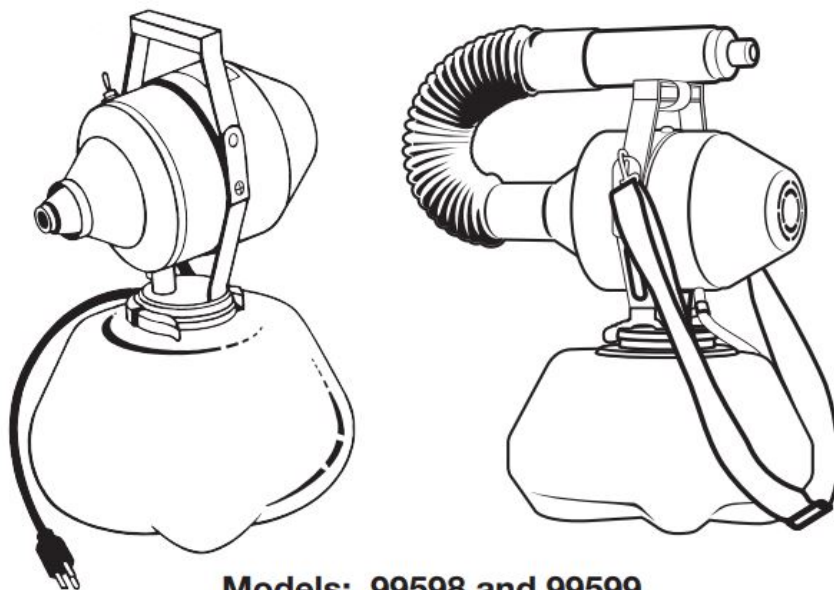
HUDSON Fog Atomizer Sprayers Instructions

HUDSON®

The World Standard of Value

PROFESSIONAL DIVISION

OPERATING INSTRUCTIONS FOG® ATOMIZER SPRAYERS



Models: 99598 and 99599

SPECIAL NOTICE TO USERS

Damage in transit, wearing of nozzles or other parts, temperature, altitude, climatic factors, and manners of use

may affect the performance of this equipment. Careful maintenance approved calibration procedures and repeated testing of output are necessary for safe and satisfactory results. Users must determine that the rate of application is proper for the chemical being used and the conditions under which it is being applied.

BEFORE USE, READ THIS MANUAL COMPLETELY. KEEP MANUAL FOR FUTURE REFERENCE.

WARNINGS

- **DO NOT** operate this sprayer in small, enclosed areas, or any area where any spray or foreign material could be sucked into the air intake.
- **DO NOT** overheat the motor. Be sure air intake is kept open at all times.
- **DO NOT** use this sprayer for paint spraying.
- **DO NOT** spray gasoline or other flammables.
- **DO NOT** alter the sprayer.
- **DO NOT** store chemicals in the canister.
- **ALWAYS READ AND FOLLOW** instructions for chemicals to be applied.
- **IF SPRAY PATTERN BECOMES IRREGULAR**, turn the sprayer off, remove the intake strainer and clean the screen.
- **IF CORD BECOMES DAMAGED**, it must be replaced before further use.
- **DO** clean the sprayer thoroughly after each use.

LIMITED WARRANTY — H. D. Hudson Manufacturing Company warrants to the original consumer purchaser of this product at retail that it is free from defects in materials and workmanship for the period of 90 days from the original date of purchase. This warranty does not apply to damage to the product resulting from accident, misuse, neglect, alteration, modification, tampering, or failure to follow instructions supplied with the product. This warranty does not cover normal wear and tear of o-rings or seals. If the product or any part of it should malfunction within the warranty period, call 1-800-977-7293. Valid only in North America.

Contents [[hide](#)]

[1 99598 OPERATION](#)

[2 99599 OPERATION](#)

[3 Documents /
Resources](#)

[3.1 References](#)

[4 Related Posts](#)

99598 OPERATION

Fill the canister with the desired amount of spray material. Reposition the sprayer on the canister top and snap the clamp so it fits tightly. Check the switch to make sure it is “off” before plugging it into a 110/120 volt AC outlet. Once operating, the discharge rate of the sprayer may be adjusted by turning the discharge control.

Spray Adjustment: The 99598 has an adjustment range of 1.5 to 5.3 gallons/hr. Spray direction is variable through all degrees between 35 upward to 35 downward.

Wettable Powders: The 99598 sprays wettable powders at a maximum discharge rate of 5.3 gallons/hr. Preliminary testing is recommended to ensure that desired rate is obtainable. Shake or agitate solution periodically to keep powders in suspension.

Spray Patterns: The 99598 atomizes 95% of its output of fewer than 50 microns. The average particle size is 20 microns.

After Use: To store the 99598 or change spray materials, detach the sprayer from the canister and turn it “on” to flush out any spray material. The sprayer should be washed after which the unit should be reassembled. After use with wettable powders, detach the canister, immerse the supply tube in clear water and flush until no residue can be seen in the supply tube. Wash the canister thoroughly.

99599 OPERATION

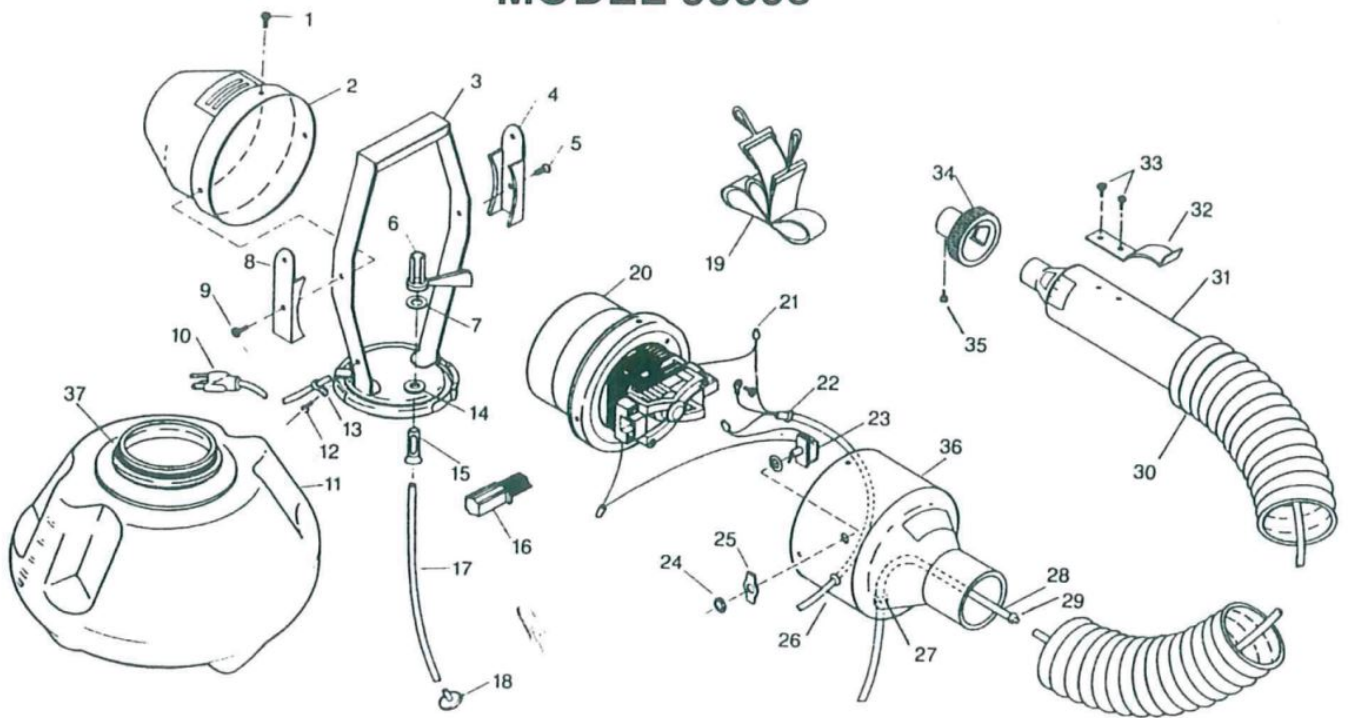
Fill the canister with the desired amount of spray material. Reposition the sprayer on the canister top and snap the clamp so it fits tightly. Check the spray selector valve on the tube that extends from the motor housing to the tank cover plate and set it according to the desired spray pattern. “Heavy” setting is achieved with valve lever turned full left (counter-clockwise). This covers the valve opening and pressurizes the canister. “Heavy” setting produces a dense wetting spray, ideal for application of residual or surface type spraying. “Fine” setting is achieved by turning the valve lever full right (clock-wise). This opens the valve and allows air not utilized in spray discharge to escape. “Fine” setting produces ultrafine particles, ideal for flying insect control. Check the switch to make sure it is “off” before plugging into a 110/120 Volt AC outlet for 99599. Once operating, the discharge rate may be adjusted by turning the discharge control at end of the hose.

Spray Adjustment: The “fine” (unpressurized) setting has an adjustment rate of 1.5 to 3.5 gallons/hr. On the “heavy” (pressurized) setting, the adjustment rate is 6 to 14 gallons/hr. Spray direction is variable through manipulation of the discharge hose.

Wettable Powders: Preliminary testing is recommended to ensure that desired rate is obtainable. Shake or agitate solution periodically to keep powders in suspension.

After Use: When the unit is turned “off” after spraying, siphoning action may continue for a moment, resulting in a solid stream of spray material. To prevent this, tip the nozzle up straight as you switch “off” the motor, thus flushing any spray solution remaining in the discharge line back into the canister. To store the 99599 or change spray materials, detach the sprayer from the canister, immerse the supply tube in clear water, and flush until no residue can be seen in the supply tube. Wash the canister thoroughly.

MODEL 99598

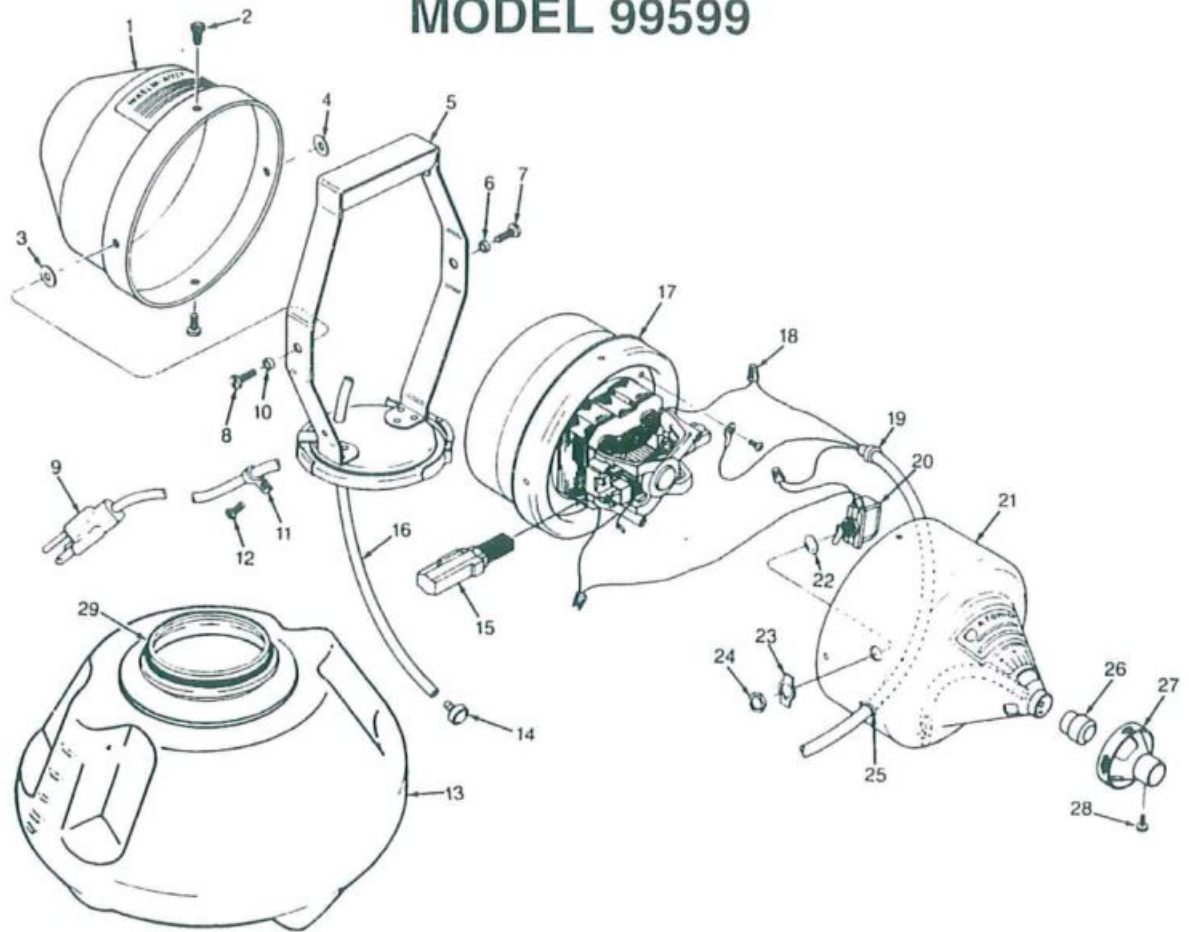


Parts List for Model 99598

Parts	Outlet kit 944-701	Switch Kit 944-825	Motor Kit 944-830	Cord kit (120V) 944-820	Motor Euro Kit 944-785	Cord kit (220V) 944-815	Frame Kit 944-601	Misc. Parts	Motor CE Kit 944-786	Cord Kit CE 948-306
1. Screw # 10	*						*			
2. Intake Housing	*									
3. Handle							*			
4 & 8 strap hangers							*			
6. Valve Lever							*			
5 & 9 Frame Screws**							*			
7. Washer							*			
10. Cord				22 inch		20 ft				3 m
11. Canister								952-552		
12. Clamp Screw	*			*		*				*
13. Cord Clamp	*			*		*				*
14. Grommet **	*						*			
15. Pressure Tube							*			
16. Brush **								953-500		
17 & 28 Supply Tube	*						*			
18. Intake Strainer	*						*			
19. Strap								955-020		
20. Motor			120V		220V				220V	
21. Wire Connectors**	*	*	*	*	*	*			*	*
22. Cord Stop	*	*								
23. Switch		*								
24. Switch Plate Nut		*								
25. On/Off Plate		*								
26. Grommet	*									
27. Push Nut	*									
29. Adapter (supply tube)	*									
30. Flex Hose	*									
31. Outlet Nozzle	*									
32. Storage Hook	*									
33. Screw # 8	*									
34. Adjustment Hub	*									
35. Screw # 4	*									
36. Outlet Housing	*									
37. Canister Gasket								805-202		

** Denotes 2 each are required

MODEL 99599

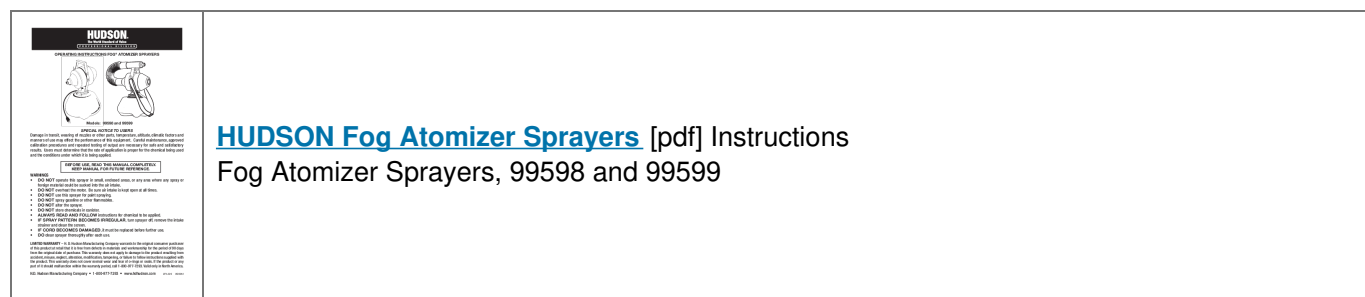


Parts List for Model 99599									
Figure Number Description	Outlet Kit 946-705	Switch Kit 944-825	Motor Kit 944-850	Cord kit (120V) 944-820	Cord kit (Euro) 948-306	Motor Euro Kit 944-785	Frame Kit 944-600	Misc Parts	Mototr Euro Kit CE 944-786
1. Intake Housing	*								
2. Screw # 10 - 9/16	*						*		
3 & 4. Spring Washer	*						*		
5. Frame							*		
6 & 10 Shoulder bushing	*						*		
7 & 8 Screw # 10 - 3/4	*						*		
9. Cord				22 inch	3 m				
11. Cord Clamp	*			*	*				
12. Clamp Screw # 8	*			*	*				
13. Canister								952-552	
14. Intake Strainer	*								
15. Brush **								953-500	
16. Supply Tube	*								
17. Motor			120V			220V			220V
18. Wire Connectors	*	*	*			*			*
19. Cord Stop	*			*	*				
20. Switch		*							
21. Outlet Housing	*								
22. Lock Nut		*							
23. Switch On/Off plate		*							
24. Switch Plate Nut		*							
25. Grommet **	*			*	*				
26. Nozzle (Brass)	*								
27. Adjustment Hub	*								
28. Hub Screw # 4 - 1/4	*								
29. Gasket								805-202	

** Denotes 2 each are required

H.D. Hudson Manufacturing Company · 1-800-977-7293 · www.hdHUDSON.com

Documents / Resources



References

- [H.D. Hudson Sprayers | The right way to spray](#)