

HUDORA 64002 Double Horizontal Bar Fabian Instruction Manual

[Home](#) » [hudora](#) » HUDORA 64002 Double Horizontal Bar Fabian Instruction Manual 

HUDORA®

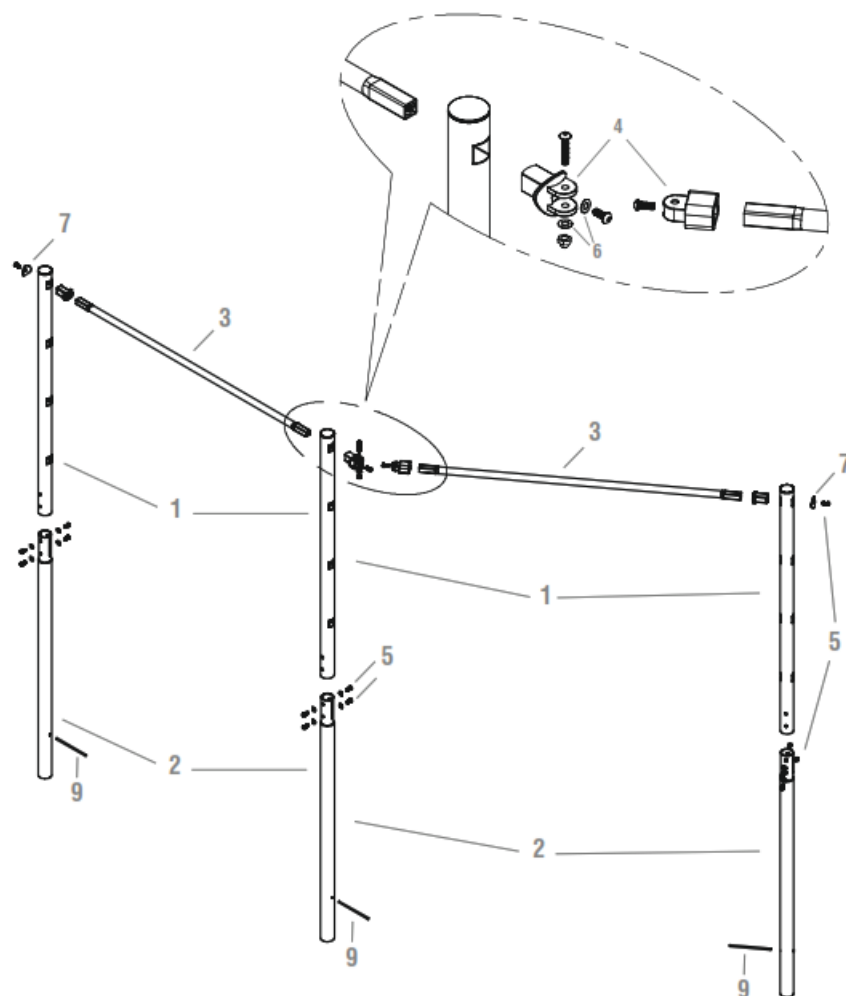
64002 Double Horizontal Bar Fabian
INSTRUCTIONS FOR ASSEMBLY AND USE



Contents

- 1 64002 Double Horizontal Bar Fabian
- 2 PARTS LIST
- 3 INSTALLATION
- 4 TECHNICAL SPECIFICATIONS
- 5 INTRODUCTION
- 6 SAFETY INSTRUCTIONS
- 7 INSTALLATION INSTRUCTIONS
- 8 MAINTENANCE AND STORAGE
- 9 DISPOSAL ADVICE
- 10 Documents / Resources
 - 10.1 References

64002 Double Horizontal Bar Fabian

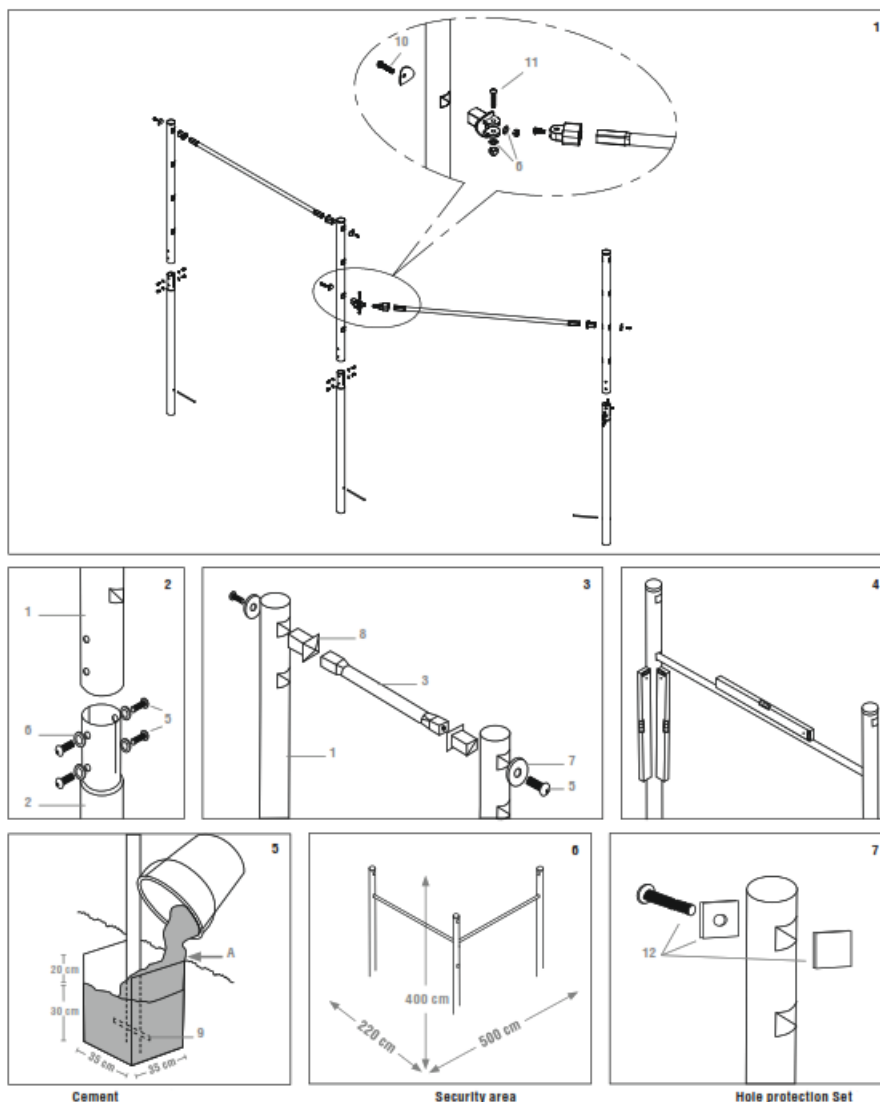


PARTS LIST

Top handle bar	3x
Bottom handle bar	3x
High bar	2x
Adapter bracket, two parts	1x
Screw M8 x 20 mm	16x
Washer 16 mm	14x
Adapter disk 40 mm	4x
Bar adapters	3x
Concrete Anchor	3x
Screw M8 x 51 mm	1x
Screw M8 x 43 mm	1x
Hole protection set (2 covers and 1 pin)	9x
Spanner	1x
Allen key	1x

Other parts included with the package are not listed and are not required for the set-up.

INSTALLATION



CONGRATULATIONS ON PURCHASING THIS PRODUCT!

Please read these instructions carefully. The instructions are an integral component of the product. Therefore, please store them and the packaging carefully in case questions arise in the future. Please always include these instructions when handing on the product to a third party. This product must be assembled by an adult. This product is designed for private / domestic use only. This product is not designed for commercial / industrial use. The use of the product requires certain capabilities and skills. Always adjust according to the age of the user and use for the purpose it has been designed for.

TECHNICAL SPECIFICATIONS

Item:	Double-Horizontal Bar Fabian Fabian Pro
Item number:	64002 64004
Maximum carrying capacity:	100 kg
Dimensions (set in concrete):	: 154 x 241 x 5 cm
Purpose:	Device for playful gymnastic exercises.
Minimum age for use:	36 months

If you have trouble getting the product ready for use or need additional product information, please visit our

INTRODUCTION

Please read this entire manual completely before using the trampoline. As in any kind of physical activity, there is a risk of injury involved. Read all instructions and tutorials before usage. Warnings, care & maintenance instructions are provided to ensure safe and fun usage of this equipment. Please keep this instruction manual!

SAFETY INSTRUCTIONS

- WARNING! Only for domestic use. Suitable for outdoor use only.
- WARNING! To be used under the direct supervision of an adult.
- WARNING! Not suitable for children under 36 months. Small parts. Choking hazard. Danger of falling.
- WARNING! This product contains small parts which could cause asphyxia if swallowed. Supervise children during the assembling.
- Ample headroom is absolutely essential. A minimum clearance of 2 m above the high bars is recommended. Remove all wires, tree branches and other potential hazards from the clearance zone.
- Lots of room to move is absolutely indispensable. Make sure you set up the high bar structure away from walls, buildings, electrical power lines, fences and playground areas. Keep a minimum clearance of 2.5 m each behind and in front of the gymnastics high bar. The clearance to the sides should be no less than 1 m each!
- Make sure that the surface beneath the high bar is not too hard. We recommend grass or rubber mats.
- Remove all objects that could interfere with the gymnast's movements and do not place any objects whatsoever beneath the high bar. Empty your pants pockets prior to using the high bar. Take off any jewellery or watches before use.
- Never use indoors!
- The improper or incorrect use of the high bar is dangerous and could result in severe injuries!
- Use this device only if you are physically fit enough to do so. If you have any misgivings, please consult with your doctor prior to using it.
- The owner of the gymnastics high bar and the supervising adults present are responsible for the compliance of all users with the instructions in the operating manual.
- Use the gymnastics high bar only in the presence of experienced supervisors who have pertinent know-how.
- This product has been designed for a certain maximum weight and a specific use. Maximum user weight has been mentioned in the Technical Specifications.
- Do not jump onto the high bar from other athletic structures or objects or vice versa. Do not use the device if you are fatigued. Users should always choose a bar level that they can reach on their own without the assistance of another person. Do not use the device when set to heights that are too high for you!
- To prevent slip and fall accidents, make sure that the high bar and the ground are dry while you are using the structure.
- While the device is in use, all individuals with the exception of a trained supervising adult should stay clear of the high bar and maintain a distance of 2 m.
- Never allow multiple gymnasts to be on the high bar at the same time!
- The simultaneous use by multiple users increases the risk of injuries such as head injuries, broken neck, broken legs or spinal cord injuries.
- If a gymnast should fall on the head or nape of the neck, this may result in paralysis or death!
- Do not perform somersaults or back flips. These exercises do increase the risk of falling on your head or nape

of the neck!

- Always wear suitable clothing.
- As in any kind of physical activity, there is a risk of injury involved.
- When permanently irradiated with UV light, the material ages significantly faster. To avoid premature ageing and thereby extend the service life, you should always store the removable mechanism(s) of the item in a dry and dark place when not in use. Do not permanently expose the removable mechanism(s) to wind, moisture, extreme temperatures or sunlight. You should cover the permanently installed parts of the product with a sheet when not in use, particularly in winter, to protect them from weather conditions.
- Self-locking nuts are only to be used for one-time assembly.

If you should determine that any of the listed risks or conditions exist that you consider potential hazards for the user, the high bar must be disassembled or secured against use until these circumstances have been eliminated.

INSTALLATION INSTRUCTIONS

Prior to the assembly

First and foremost, make sure that you have all of the parts listed below in your possession. If you should determine that any part is missing, please contact our service department. Please use gloves to protect your hands against pinching injuries while you are putting the device together. We recommend that at least two people should work together when setting up this product. After assembly the two support rods will have to be set into the ground on even keel with concrete. For safety reasons, the grab poles must be set in concrete precisely as shown in figure 5. Concrete mixture is not part of the product and will have to be purchased separately. Follow the concrete manufacturer's instructions to mix it properly.

The stretching rods can only be adjusted in height or else removed from their holders, if the upper bars have been previously removed from the lower support rods.

MAINTENANCE AND STORAGE

Use a dry or damp cloth only to clean the product; do not use special cleaning agents! Check the product for damage or traces of wear and tear before and after each use. Do not make any structural changes. For your own safety, please use original spare parts only. These can be sourced from HUDORA. If parts become damaged or if sharp edges or corners should develop, the product may not be used any more. If in any doubt, please contact our service team (<http://www.hudora.de>). Store the product in a safe place where it is protected from the elements, cannot be damaged, and cannot injure anyone.

After you have assembled all components, make sure that all screw connections are tight. Check nuts and screws regularly for tightness and tighten if necessary. We also recommend before each use to check all coverings for bolts and sharp edges and replace when required. Please ensure that the hole safety catch is always firmly attached. If possible, cover the gymnastics high bar with a tarpaulin. It will provide protection against harsh weather conditions.

DISPOSAL ADVICE

At the end of the product's life, please dispose of it at an appropriate collection point provided in your area. Local waste management companies will be able to answer your questions on this.

SERVICE

We make every effort to deliver faultless products. If faults do arise however, we put just as much effort into rectifying them. Therefore, you can find numerous information on the product, replacement parts, solutions to problems and lost assembly manuals at <http://www.hudora.de>.

All images are examples of the design.

Documents / Resources

	<p>HUDORA 64002 Double Horizontal Bar Fabian [pdf] Instruction Manual 64002 Double Horizontal Bar Fabian, 64002, Double Horizontal Bar Fabian, Horizontal Bar Fabian, Bar Fabian, Fabian</p>
---	--

References

-  [HUDORA® Sport und Freizeitartikel » Zum Online-Shop](#)
-  [HUDORA® Sport und Freizeitartikel » Zum Online-Shop](#)