



# Huddly L1 AI Directed Multi Camera System User Manual

[Home](#) » [Huddly](#) » Huddly L1 AI Directed Multi Camera System User Manual 

## Contents

- [1 Huddly L1 AI Directed Multi Camera System](#)
- [2 Product Information](#)
- [3 Product Usage Instructions](#)
- [4 Components](#)
- [5 Features](#)
- [6 Room Examples](#)
- [7 Installation Dimension](#)
- [8 Connectivity](#)
- [9 Setup](#)
- [10 Documents / Resources](#)
  - [10.1 References](#)
- [11 Related Posts](#)



**Huddly L1 AI Directed Multi Camera System**



## Product Information

The Huddly Crew is an AI-directed multi-camera system designed for capturing meetings and conferences. It consists of three Huddly L1 network cameras with specialized Huddly Director software. The system features various advanced functionalities such as image enhancement, digital pan/tilt/zoom, real-time dewarping, exposure adjustment, and software-upgradable capabilities. The cameras are connected via CAT6 Power over Ethernet cables to a Netgear switch, which is then connected to a Huddly USB adapter for connection to a room system or Windows computer.

## Components

- **A:** Huddly L1 (Quantity: 3)
- **B:** Wall Mount (Quantity: 3)
- **C:** USB Adapter (Quantity: 1)
- **D:** Power Adapter & Regional Plugs (Quantity: 1)
- **E:** USB C-C Cable, 0.6 m (Quantity: 1)
- **F:** USB A-C Cable, 0.6 m (Quantity: 1)
- **G:** Ethernet Cable, 3 m (Quantity: 4)
- **H:** Ethernet Switch (Quantity: 1)
- **I:** Power Adapter (Quantity: 1)
- **J:** Regional Power Cable (Quantity: 4)

## Features

- **Huddly Director:** AI-powered software that edits meetings in real-time, focusing on the speaker and capturing non-verbal reactions from listeners.
- **Software-Upgradable:** Regular software upgrades introduce new capabilities and enhancements.
- **Image Enhancement:** Automatic white balance, color correction, and optical aberration correction for improved image quality.
- **Digital Pan/Tilt/Zoom:** Smooth and silent adjustment of camera angles without any moving parts.

- **Real-Time Dewarping:** Wide-angle image is automatically dewarped and perspective-corrected in real time.
- **Exposure Adjustment:** An intelligent mechanism optimizes brightness levels across cameras.

## Measurements

### Huddly Crew Camera (A):

- **Length:** 122 mm/4.8 in
- **Height:** 53 mm/2.0 in
- **Width (incl. lens):** 82 mm/3.2 in
- **Weight (via USB Adapter):** 0.6 kg/1.3 lbs
- **Color:** Matte Black

## Measurements

### Huddly USB Adapter (C):

- **Length:** 82 mm / 3.2 in
- **Height:** 27 mm / 1.1 in
- **Width:** 82 mm / 3.2 in
- **Weight:** 0.2 kg / 0.4 lbs
- **Power Requirements:** Requires external 5V 3A power, supplied via USB C or the included external AC/DC 5V 4A power adapter
- **Color:** Matte Black

## Product Usage Instructions

### To set up the Huddly Crew system:

1. Ensure the system is set up at eye level, taking into consideration the seating arrangement in the room.
2. Connect the Huddly L1 network cameras to the Netgear switch using the provided Ethernet cables.
3. Connect the Netgear switch to the Huddly USB adapter using an Ethernet cable.
4. Connect the Huddly USB adapter to your room system or Windows computer using a USB cable.

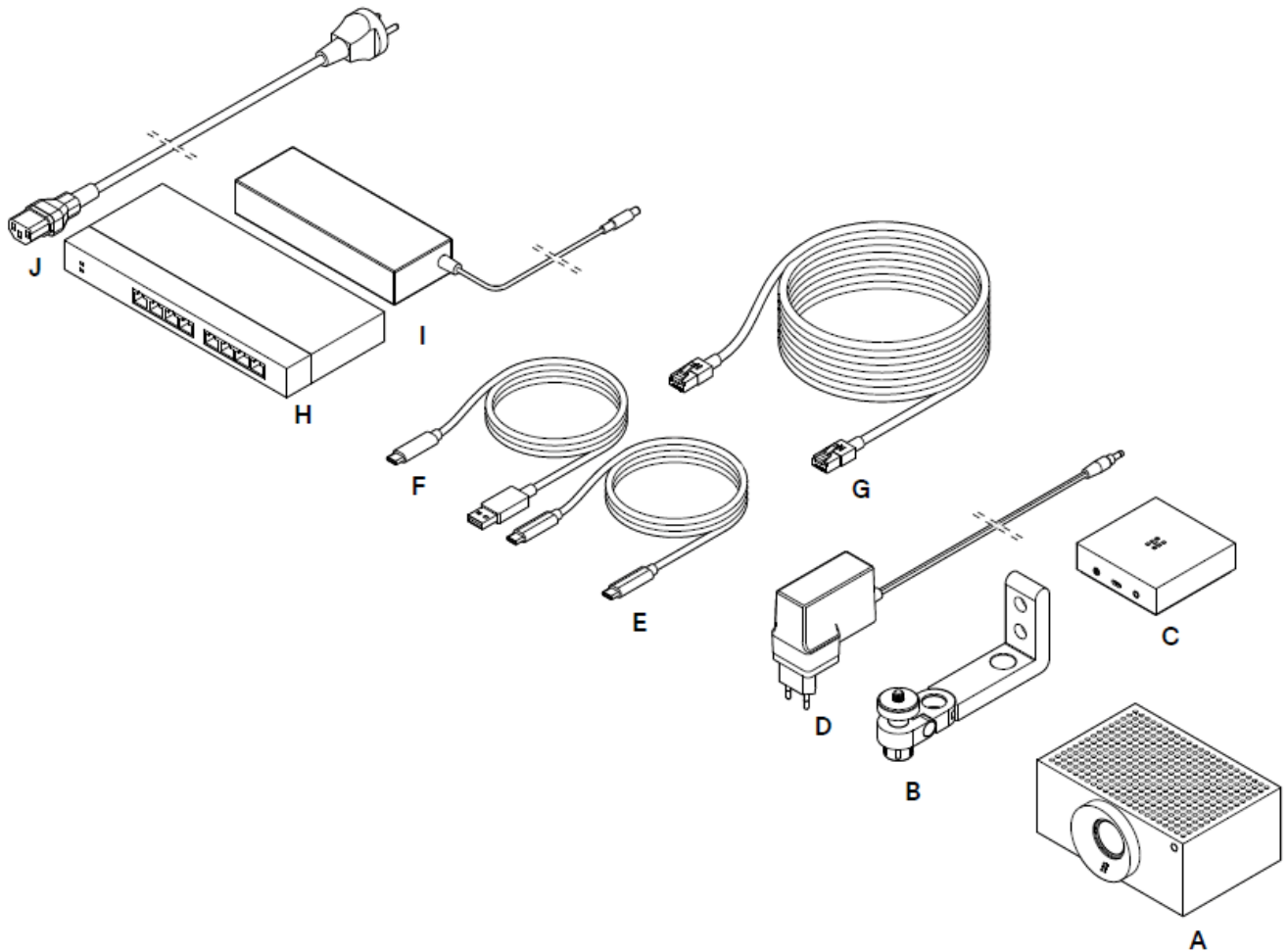
**Note:** For more detailed instructions, please refer to the Installation Guide.

## Components

### Item/Quantity

- **A:** Huddly L1 3
- **B:** Wall Mount 3
- **C:** USB Adapter 1
- **D:** Power Adapter & Regional Plugs 1
- **E:** USB C-C Cable, 0.6 m 1

- **F:** USB A-C Cable, 0.6 m 1
- **G:** Ethernet Cable, 3 m 4
- **H:** Ethernet Switch 1
- **I:** Power Adapter 1
- **J:** Regional Power Cable 4



## Features

- **Huddly Director**

Huddly Director edits your meetings in real-time using AI. Switching between different shot types, it focuses on the speaker, captures non-verbal reactions from listeners, and gives a full overview of the room.

- **Software-Upgradable**

Huddly Crew is designed for continuous improvement through regular software upgrades that introduce new capabilities and enhancements.

- **Image Enhancement**

Huddly Crew features automatic white balance, color correction, and optical aberration correction. It uses bias-compensating spatiotemporal filtering with wide-area chroma filtering to reduce image noise and Dynamic Light Optimization to adjust to low lighting conditions.

- **Digital Pan/Tilt/Zoom**

Huddly Crew has no moving parts, allowing Pan, Tilt, and Zoom functions to be adjusted smoothly, silently, and instantly.

- **Real-Time Dewarping**

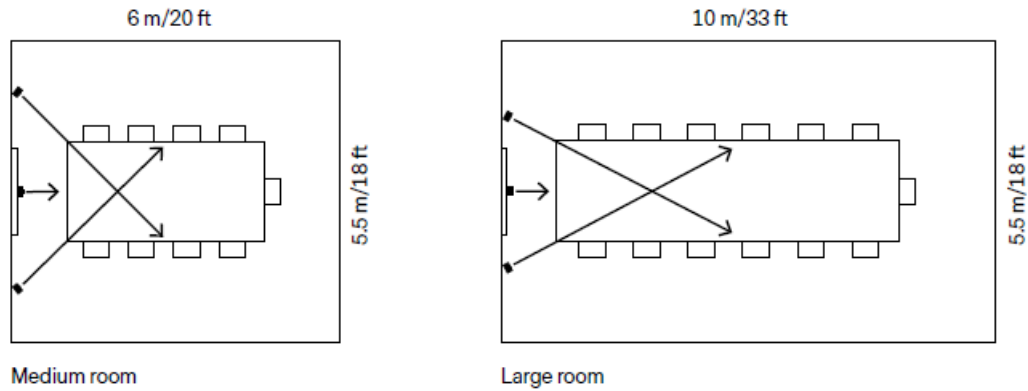
Huddly Crew's wide-angle image is automatically dewarped and perspective-corrected in real time, resulting in

a natural, true-to-life view.

- **Exposure Adjustment**

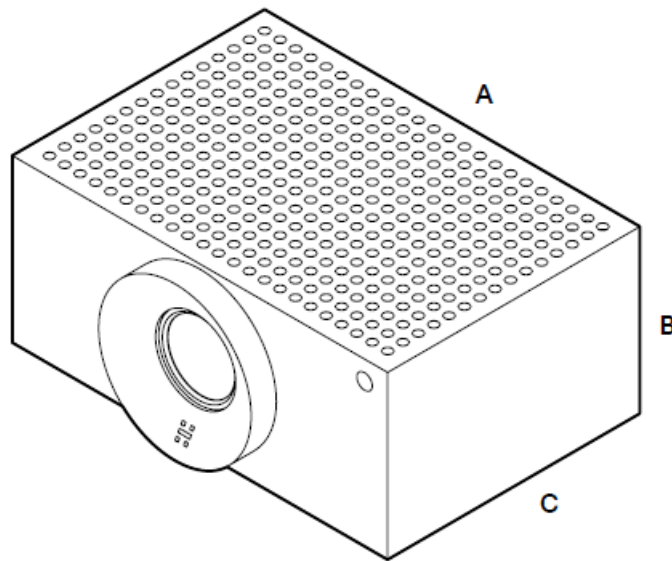
Huddly Crew uses an intelligent exposure adjustment mechanism to optimize brightness levels across cameras.

## Room Examples



## Installation Dimension

Huddly Crew consists of three Huddly L1 network cameras with specialized Huddly Director software.



## Measurements

- **A** Length 122 mm / 4.8 in
- **B** Height 53 mm / 2.0 in
- **C**
  - Width 82 mm / 3.2 in
  - incl. lens 90 mm / 3.5 in

## Weight

- 0.6 kg / 1.3 lbs

## **Image**

- 6K image sensor
- 20.30 Megapixels 1" CMOS Sensor
- 1080p Full HD @ 30 fps video output
- 720p HD @ 30fps video output
- Up to 5x digital zoom
- 16:9 aspect ratio output
- 180° image auto-flip

## **Optics**

- Wide-angle glass optics
- Horizontal field of view 92°
- Vertical field of view 65°
- The diagonal field of view 103°
- f/2.9 aperture

## **System & Hardware Requirements**

- Windows 10
- Huddly USB Adapter (included)

## **Connectivity**

- Connector: RJ45
- Cable: Cat 5e/6/7
- USB Type-C port supporting USB 2/3 (via USB Adapter)

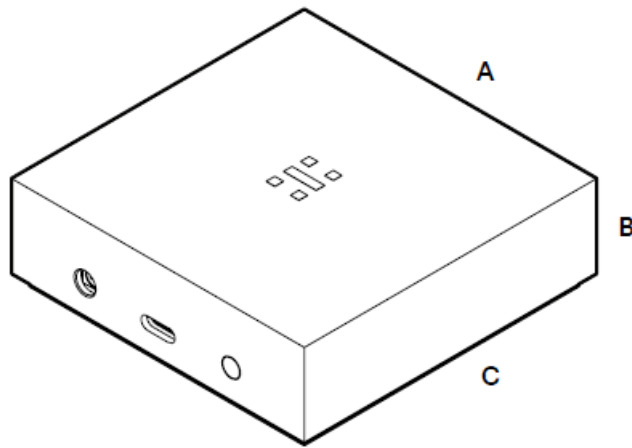
## **Hardware**

- High-performance VPU with neural computing engine
- Aluminum body

## **Color**

- Matte Black

The Huddly USB Adapter enables plug-and-play connectivity between Huddly Crew and your meeting room computer.



## Measurements

- **A** Length 82 mm / 3.2 in
- **B** Height 27 mm / 1.1 in
- **C** Width 82 mm / 3.2 in

## Weight

- 0.2 kg / 0.4 lbs

## Connectivity

- USB Type-C port supporting USB 2/3 (to host computer)
- RJ45 gigabit Ethernet port to camera
- DC power connector

## Power Requirements

Requires external 5V 3A power, supplied either via USB C or the included external AC/DC 5V 4A power adapter.

## Hardware Specifications

- Aluminum body
- Built-in magnet for easy mounting to metal
- Wall mount plate (included)

## Color

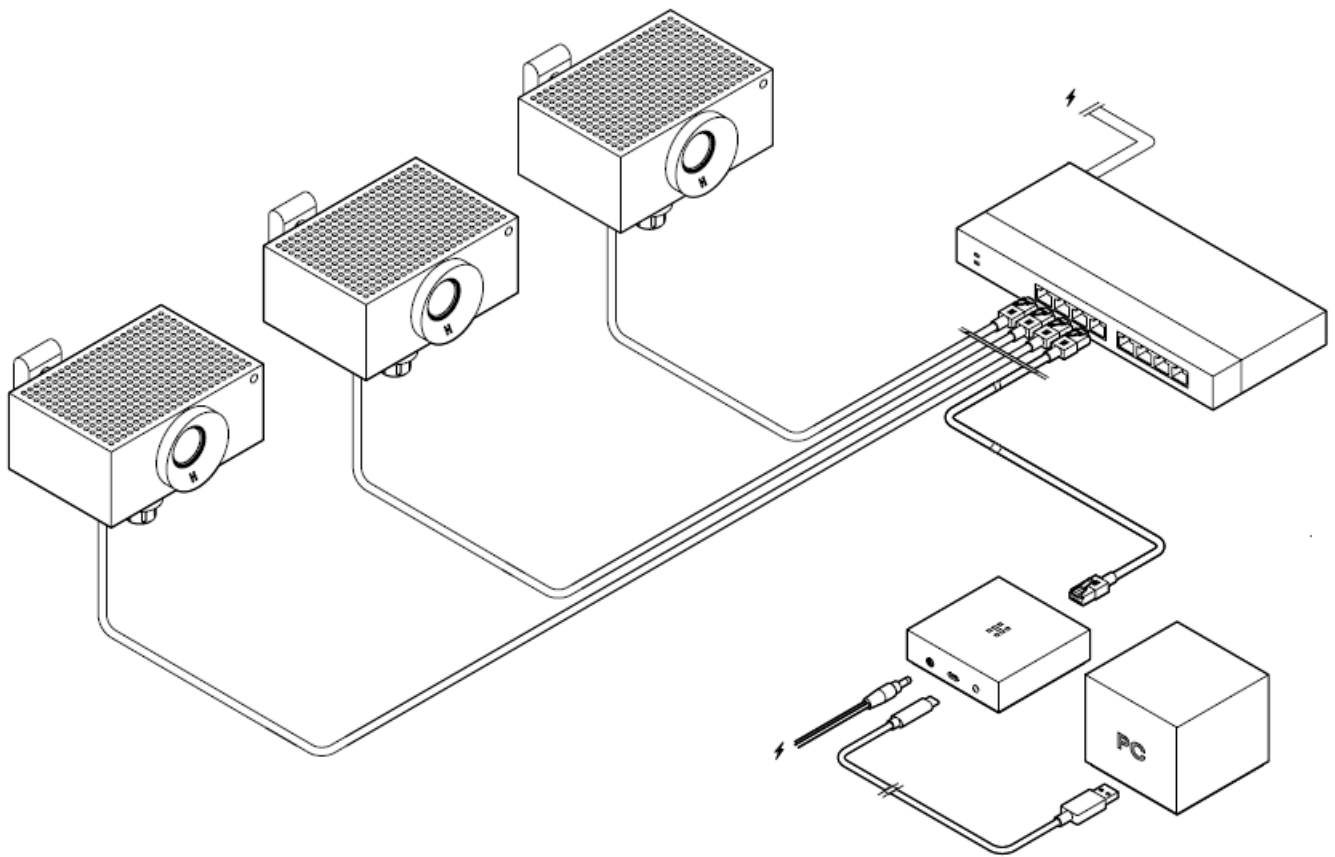
- Matte Black

## System & Hardware Requirements

- Windows 10

## Connectivity

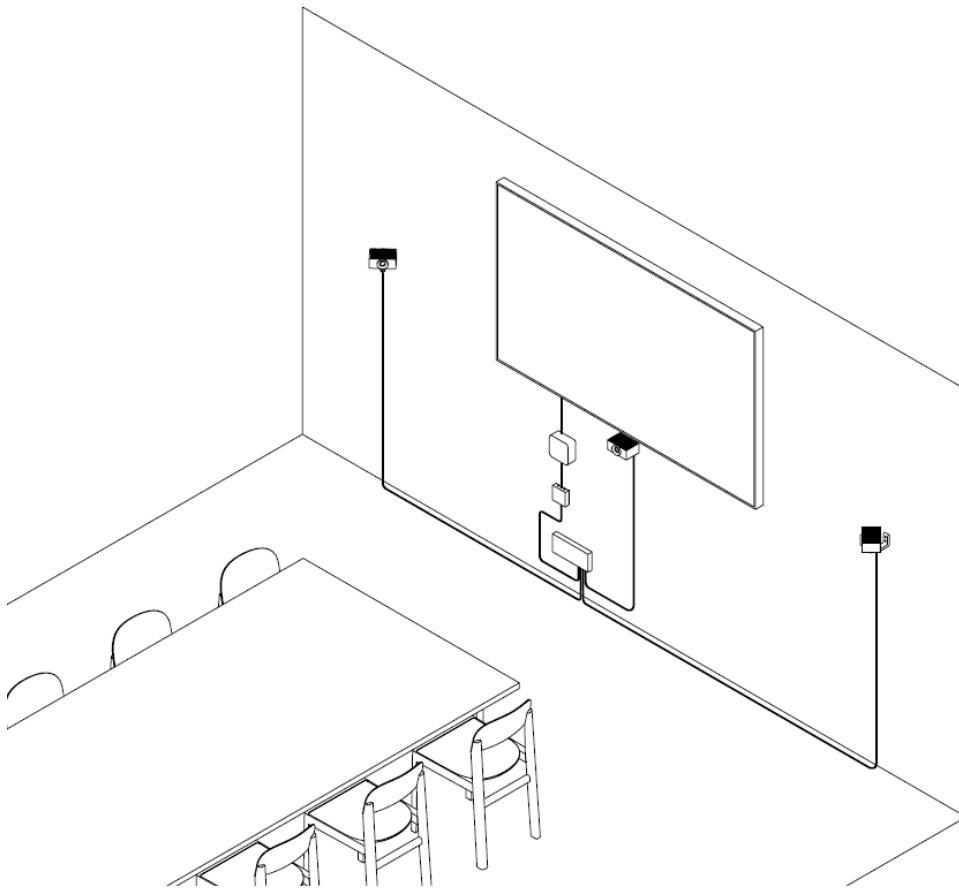
The cameras are linked via CAT6 Power over Ethernet cables to a Netgear switch provided by Huddly. This switch connects to a Huddly USB adapter, which links to your room system or Windows computer via a USB cable. The cameras can communicate over any distance through Ethernet, allowing for high flexibility.



## Setup


To ensure an optimal experience, it's recommended to set up the system at eye level, taking into consideration the seating arrangement in the room. For more in-depth instructions, please consult the Installation Guide.





[huddly.com/Crew](https://huddly.com/Crew).

## Documents / Resources

<div><div><div>Huddly Crew</div><div>AI-directed multi-camera system</div></div><div></div></div>	<p><a href="#">Huddly L1 AI Directed Multi Camera System</a> [pdf] User Manual</p> <p>L1 AI Directed Multi Camera System, L1 AI, Directed Multi Camera System, Multi Camera System, Camera System</p>
--	---

## References

- [Huddly Crew | Huddly](#)
- [Huddly Crew | Huddly](#)