



HUAWEI YDS60-C24 FusionSolar SmartPVMS Smart Dongle User Guide

[Home](#) » [Huawei](#) » HUAWEI YDS60-C24 FusionSolar SmartPVMS Smart Dongle User Guide 

Contents

- [1 HUAWEI YDS60-C24 FusionSolar SmartPVMS Smart Dongle](#)
- [2 Product Usage Instructions](#)
- [3 Product Overview](#)
- [4 Cable Connections \(Three-Phase Inverter M1 + ESS S0 + Backup Box B1 + Smart Dongle\)](#)
- [5 System Commissioning](#)
- [6 Installer Registration](#)
- [7 Off-Grid/Grid-tied Control Parameters](#)
- [8 Generating a Physical Layout on the App Automatically](#)
- [9 Documents / Resources](#)
 - [9.1 References](#)
- [10 Related Posts](#)



HUAWEI YDS60-C24 FusionSolar SmartPVMS Smart Dongle



Specifications

- **Inverter:** SUN2000-(5KTL-12KTL)-M1, SUN2000-(12K-25K)-MB0 series, SUN2000-(8KTL-20KTL)-M2, SUN2000-(12KTL-25KTL)-M5 series, SUN2000-(5K-12K)-MAP0 series
- **ESS:** LUNA2000-(5-30)-S0, LUNA2000-(7, 14, 21)-S1
- **Backup Box:** Backup Box-B1
- **Smart Power Sensor:** DTSU666-H, DTSU666-HW, YDS60-80, YDS60-C24, DTSU71, DHSU1079-CT
- **Smart Dongle:** SDongleB-06 (4G), SDongleA-05 (WLAN-FE)
- **Smart PV Optimizer:** SUN2000-450W-P2, SUN2000-600W-P, MERC-600W-PA0, MERC-(1300W, 1100W)-P

Product Overview

The Residential Smart PV Solution consists of various components including inverters, energy storage systems (ESS), backup boxes, smart power sensors, smart dongles, and smart PV optimizers. These components work together to provide a comprehensive smart energy management solution for residential applications.

Networking

The system involves networking between PV strings (including optimizers), slave inverters, critical loads, and various other components to ensure efficient energy distribution and utilization.

Cable Connections

Before connecting cables, ensure that all switches are OFF to prevent electric shocks. The wiring sequence of the Backup Box must be consistent with that of the inverter AC terminals.

Product Usage Instructions

Inverter Setup

1. Install the master and slave inverters according to the provided user manuals.
2. Connect the DC power cable from the PV strings to the inverter terminals following the specified positive and negative terminal connections.

ESS Configuration

1. Connect the ESS to the master inverter using the AC power cables and ensure proper connection to the AC terminals.
2. Configure the ESS settings as per the user manual guidelines for optimal performance.

Smart Dongle Networking

1. Install the Smart Dongle (4G or WLAN-FE) to enable wireless communication with the FusionSolar SmartPVMS and FusionSolar app.
2. Ensure proper positioning for signal reception and follow the setup instructions provided with the dongle.

FAQ

- **Q: Can I connect more than two ESSs to the master inverter?**

A: Yes, you can connect multiple ESSs to the master inverter. Refer to the user manual for supported meter models and baud rate negotiation details.

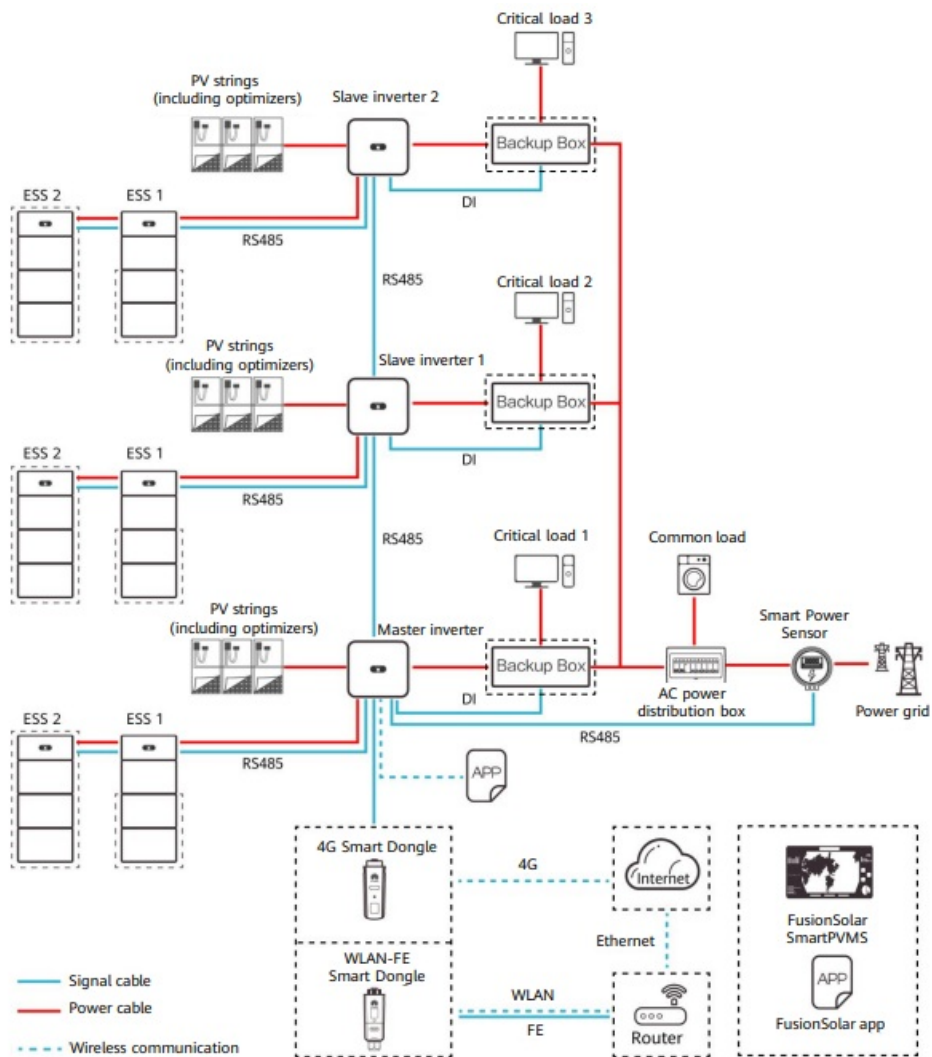
- **Q: What should I do if I encounter issues with cable connections?**

A: If you face any problems with cable connections, double-check the wiring sequence and ensure all switches are turned off before making any connections.

Residential Smart PV Solution Quick Guide

(Three-Phase PV+ESS Scenario + Smart Dongle Networking)

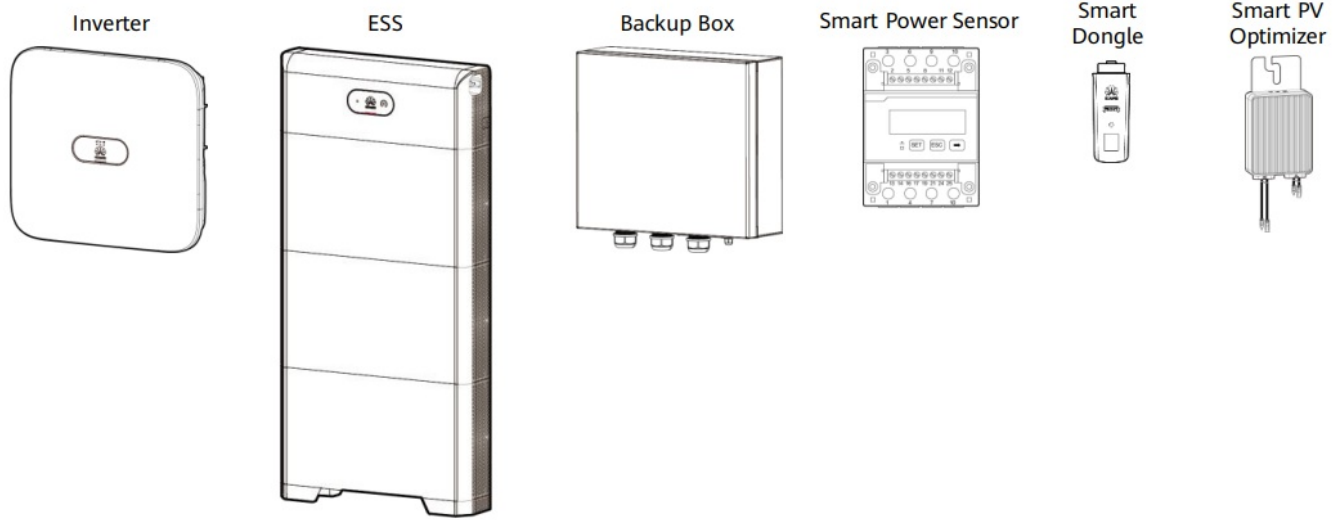
Networking



Note

1. The information in this document is subject to change without notice. Every effort has been made in the preparation of this document to ensure accuracy of the contents, but all statements, information, and recommendations in this document do not constitute a warranty of any kind, express or implied.
2. For details about the solution components, installation, and cable connections, see the corresponding user manuals and quick guides.
3. The cable colors involved in this document are for reference only. Select cables in accordance with local cable specifications.

Product Overview



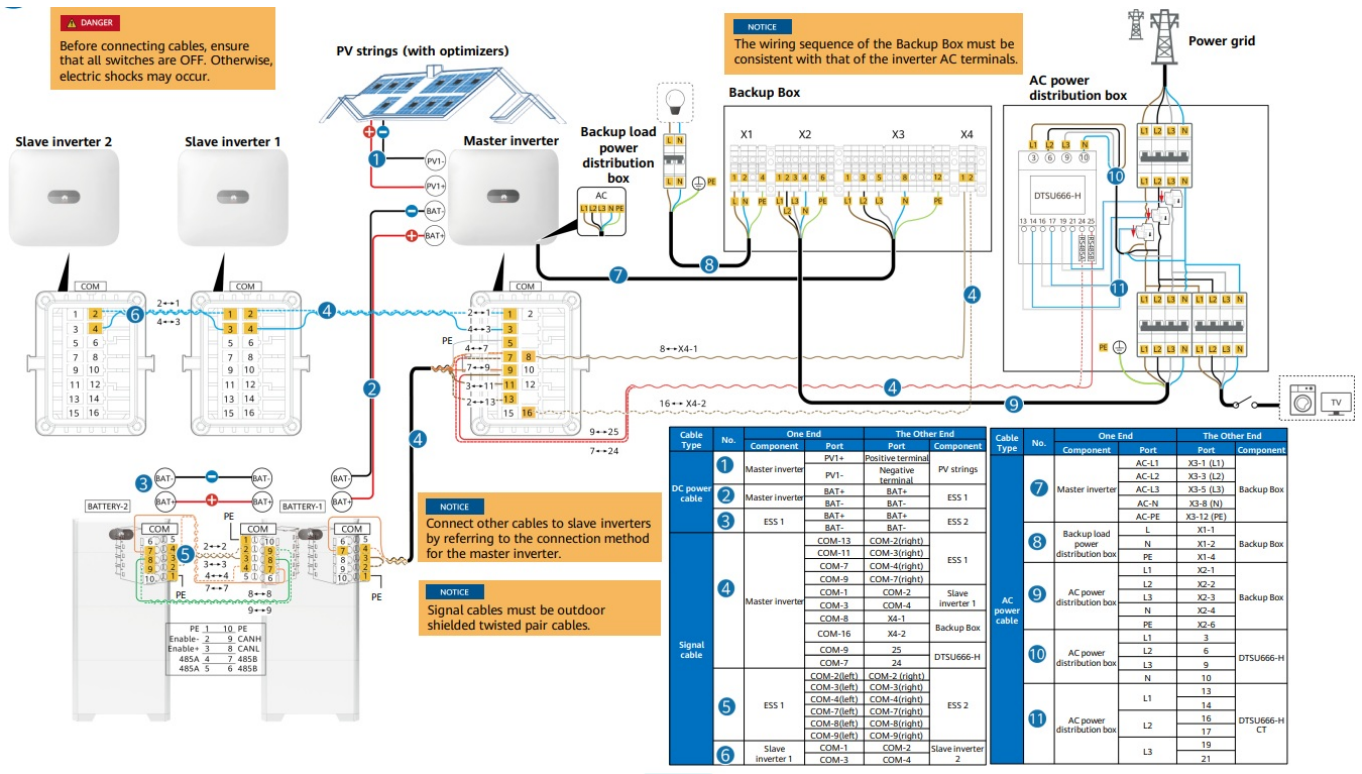
Component	Model		Description
Inverter (master and slave)	<ul style="list-style-type: none"> SUN2000-(5KTL-12KTL)-M1 SUN2000-(12K-25K)-MB0 series SUN2000-(8KTL-20KTL)-M2 SUN2000-(12KTL-25KTL)-M5 series SUN2000-(5K-12K)-MAP0 series 	<ul style="list-style-type: none"> SUN5000-(8KTL, 12KTL)-MAP0 series SUN5000-(17K, 25K)-MB0 series 	<ul style="list-style-type: none"> A maximum of three inverters can be cascaded. M1/M2/M5/MB0 inverters can be cascaded. The SUN2000-(5K-12K)-MAP0 cannot be cascaded with other inverters. SUN5000 inverters cannot be cascaded with SUN2000 inverters. Optimizers must be configured for all PV modules connected to a SUN5000 inverter. Otherwise, the inverter cannot be started. In the Smart Dongle networking scenario, a maximum of three inverters and six ESSs can be connected.
Energy storage system (ESS)	LUNA2000-(5-30)-S0 LUNA2000-(7, 14, 21)-S1		<ul style="list-style-type: none"> If there is only one ESS, it must be connected to the master inverter. Each M1/MAP0 can connect to a maximum of two ESSs, and each MB0 can connect to a maximum of four ESSs (each battery terminal can connect to a maximum of two batteries). The LUNA2000-(5-30)-S0 and LUNA2000-(7, 14, 21)-S1 cannot connect to the same inverter in a parallel system. If inverters are cascaded, the LUNA2000-(5-30)-S0 and LUNA2000-(7, 14, 21)-S1 cannot connect to different inverters.

Backup Box	Backup Box-B1	<ul style="list-style-type: none"> AC input voltage range: grid-tied (three-phase) 342–440 V; off- grid (single-phase) 220/230 V If there is only one Backup Box, it must be connected to the master inverter. Only M1 can be connected to the Backup Box -B1.
Smart Power Sensor	DTSU666-H DTSU666-HW YDS60-80 YDS60-C24 DTSU71 DHSU1079-CT	<ul style="list-style-type: none"> The Smart Power Sensor must be connected to the master inverter. It connects to the inverter over RS485 for output power management and power limiting.
Smart Dongle	SDongleB-06 (4G) SDongleA-05 (WLAN-FE)	<ul style="list-style-type: none"> The Smart Dongle must be connected to the master inverter. It connects to the management system and performs power scheduling.
Smart PV Optimizer	SUN2000-450W-P2 SUN2000-600W-P MERC-600W-PA0 MERC-(1300W, 1100W)-P	<p>For details about the optimizer supported by the inverter, see:</p> <ul style="list-style-type: none"> SUN2000 Smart PV Optimizer User Manual MERC-600W-PA0 Smart PV Optimizer User Manual MERC-(1300W, 1100W)-P Smart PV Optimizer User Manual

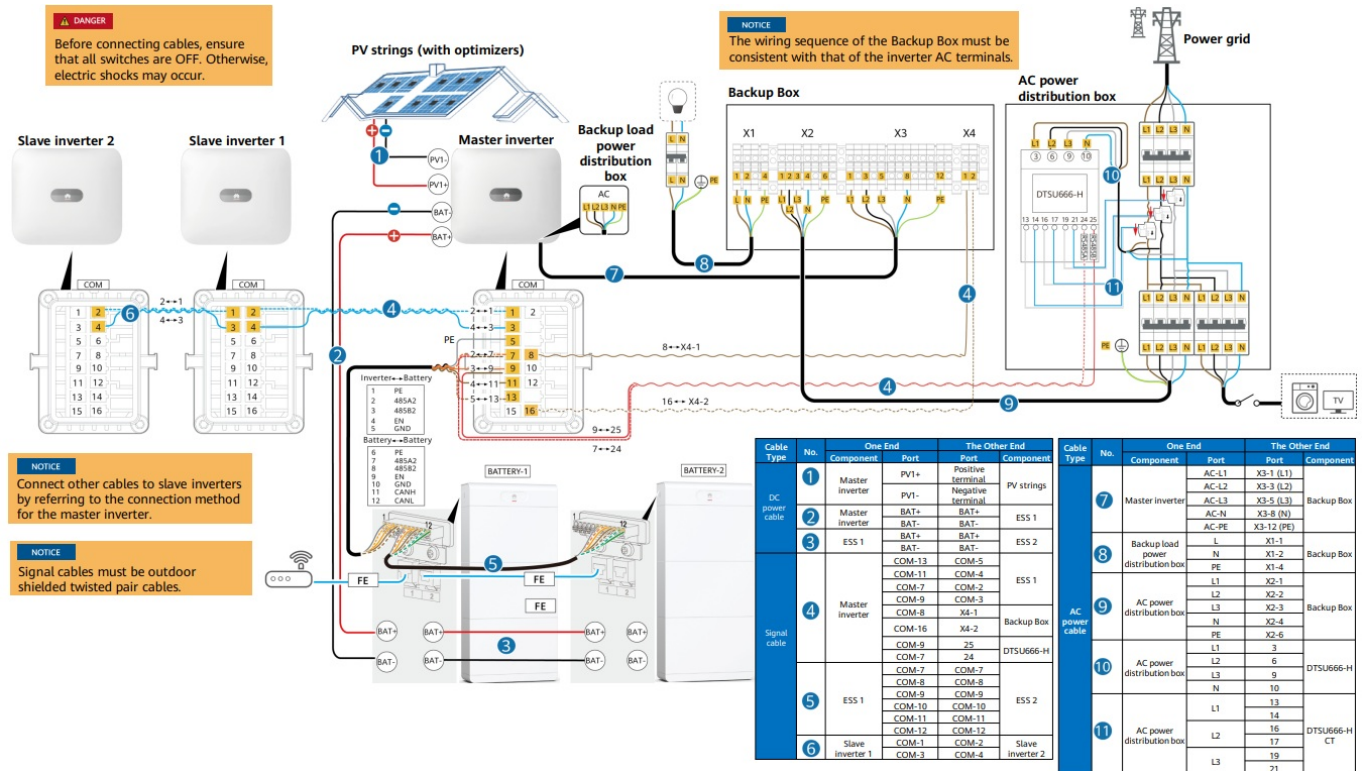
Note

When MB0 functions as the master inverter and needs to connect to both a power meter and ESS, if more than two ESSs are connected, select one of the following meter models: DTSU666-HW, YDS60-80, YDS60-C24, DTSU71, and DHSU1079-CT. The DTSU666-H is not supported. Ensure that the baud rate for RS485-2 is negotiated to 115200 bit/s. For details about baud rate negotiation, see Baud Rate Negotiation.

Cable Connections (Three-Phase Inverter M1 + ESS S0 + Backup Box B1 + Smart Dongle)



Cable Connections (Three-Phase Inverter M1 + ESS S1 + Backup Box B1 + Smart Dongle)



Cable Connections (Three-Phase Inverter MB0 + ESS S0 + Smart Dongle)

DANGER

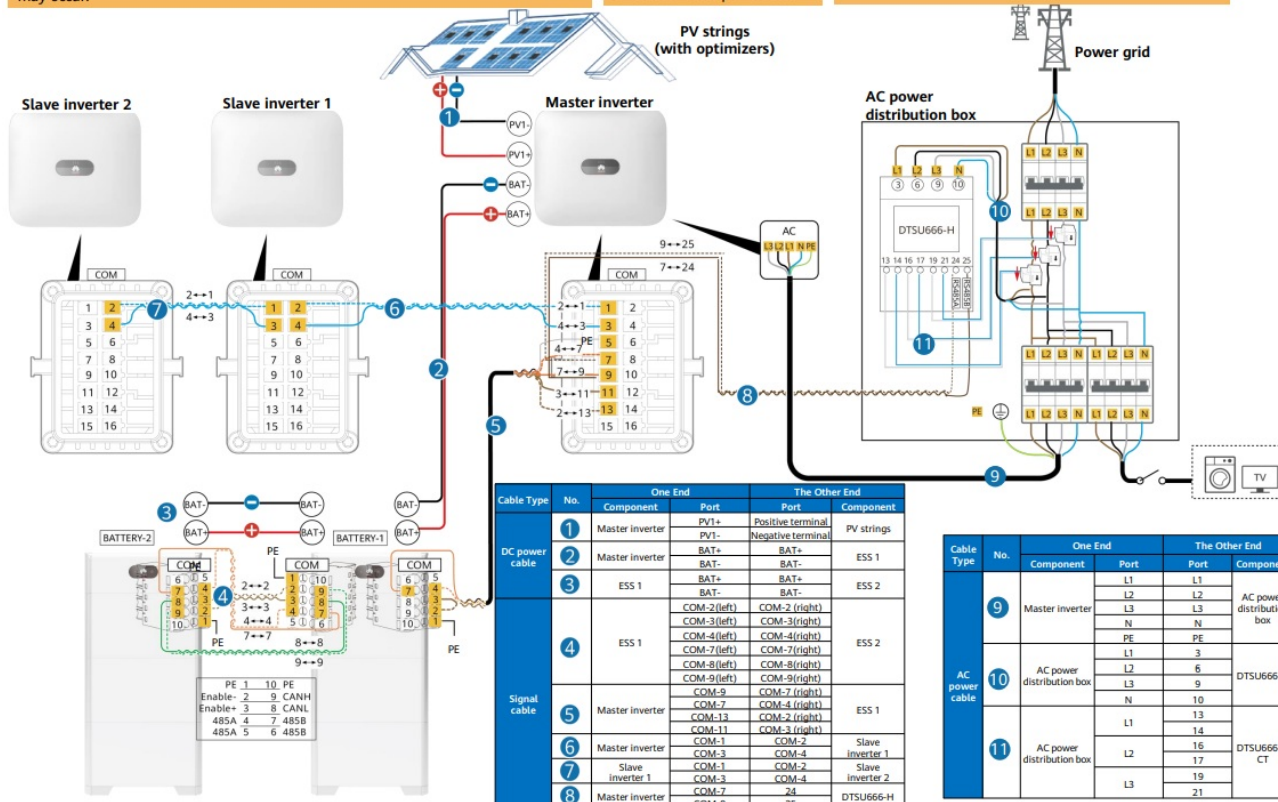
Before connecting cables, ensure that all switches are OFF. Otherwise, electric shocks may occur.

NOTICE

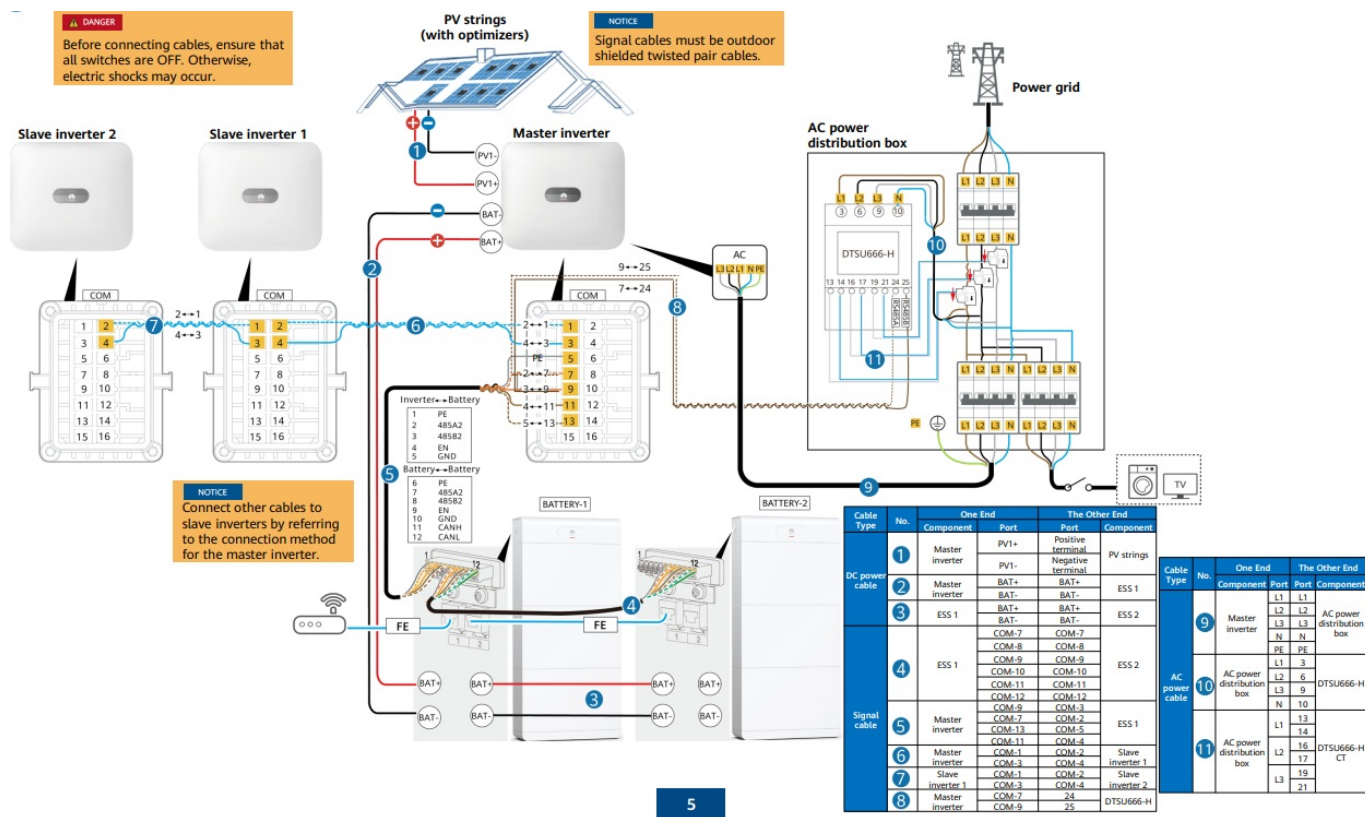
Signal cables must be outdoor shielded twisted pair cables.

NOTICE

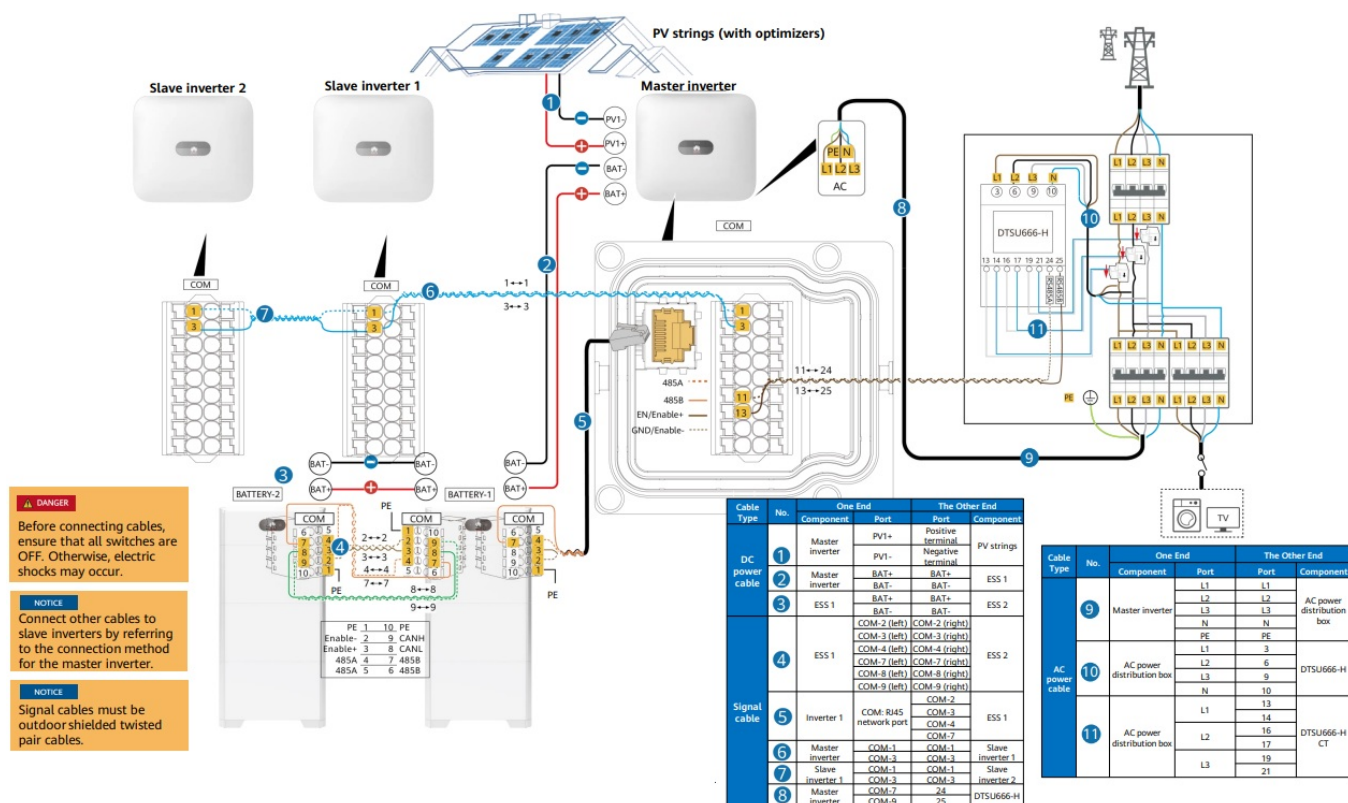
Connect other cables to slave inverters by referring to the connection method for the master inverter.



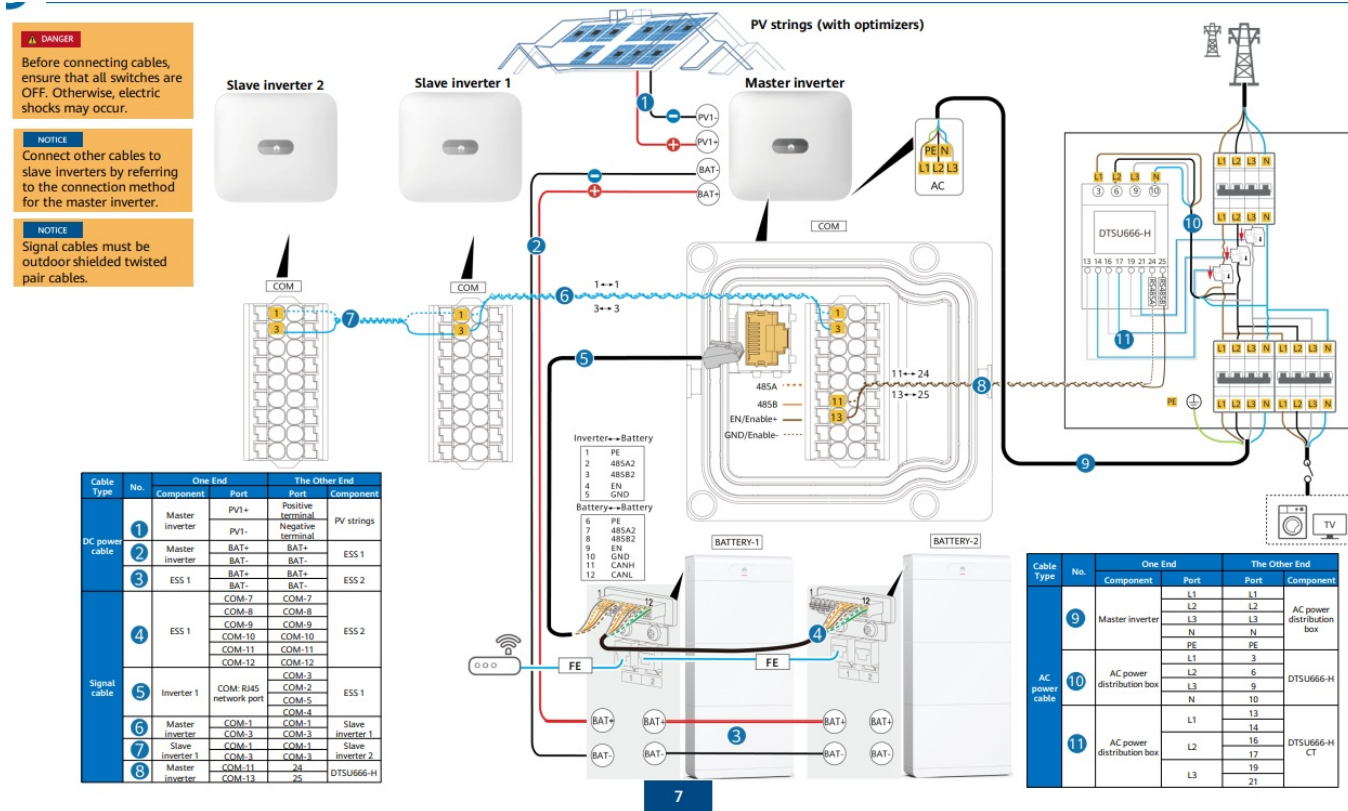
Cable Connections (Three-Phase Inverter MB0 + ESS S1 + Smart Dongle)



Cable Connections (Three-Phase Inverter MAP0 + ESS S0 + Smart Dongle)



Cable Connections (Three-Phase Inverter MAP0 + ESS S1 + Smart Dongle)



System Commissioning

App-based Deployment Procedure

Download and install the FusionSolar app

Sign up as an installer (optional, required for initial registration)

Enter the setup wizard

Check the device status

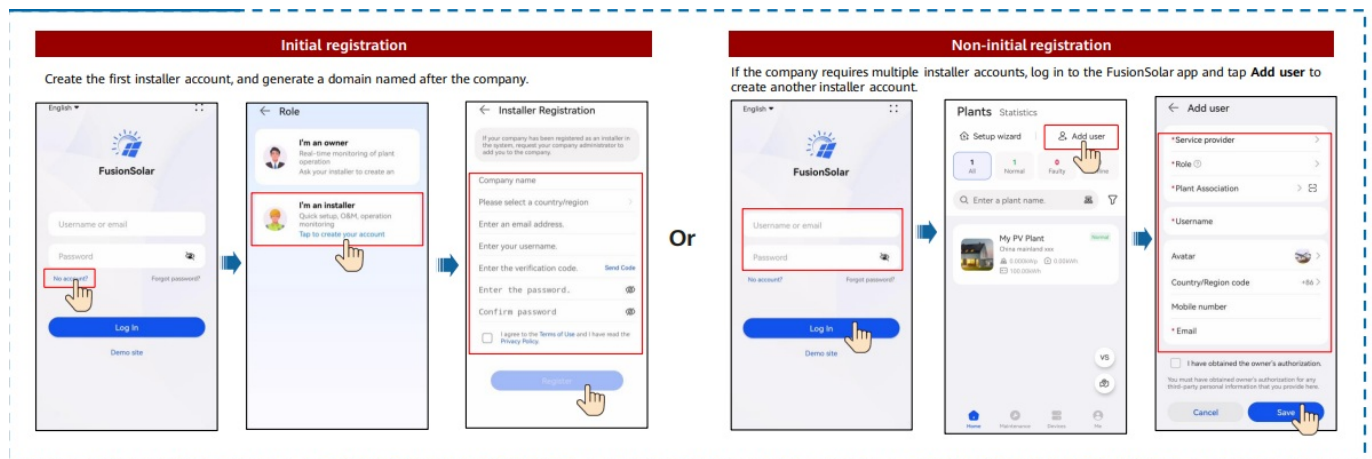
Downloading and Installing the FusionSolar App

- Search for FusionSolar in the app store to download the app.
- Scan the QR code below to download the app.

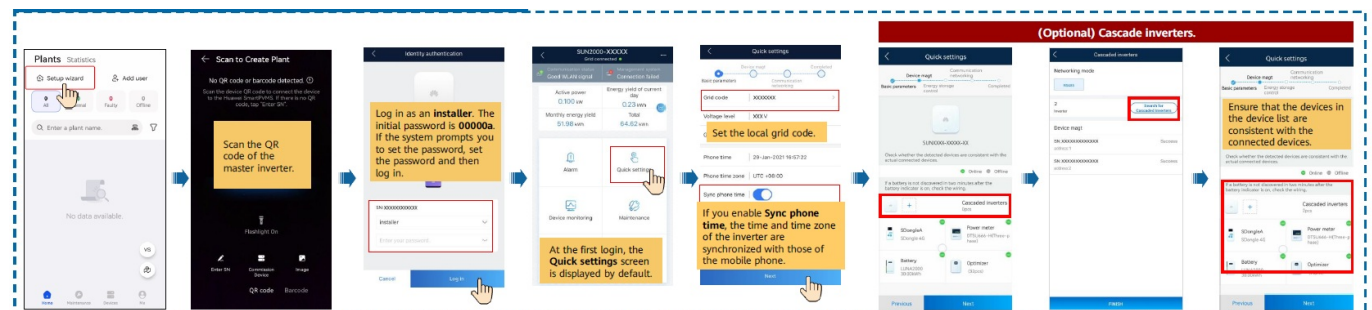


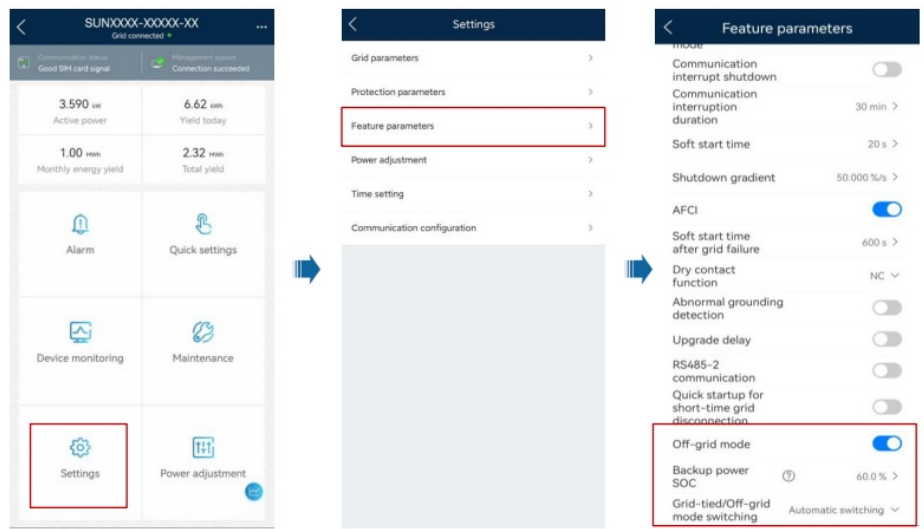
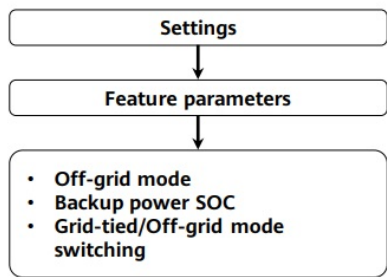
FusionSolar

Installer Registration

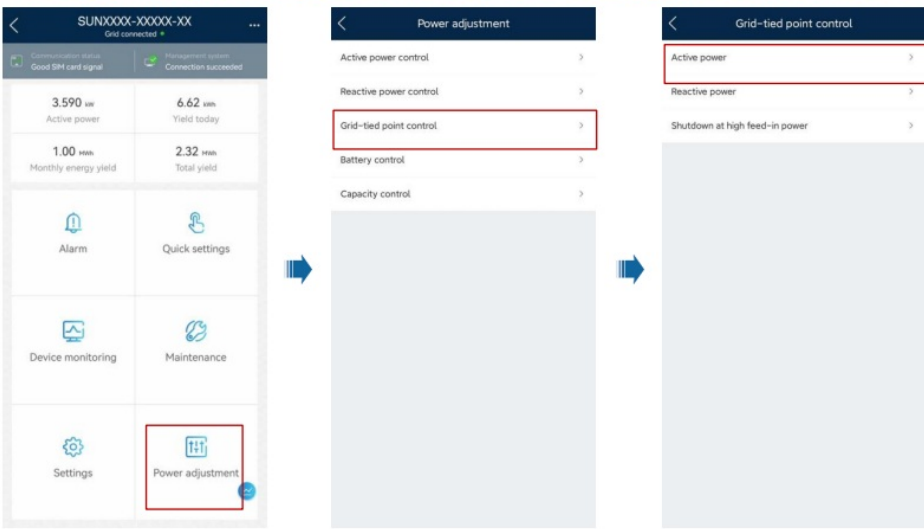
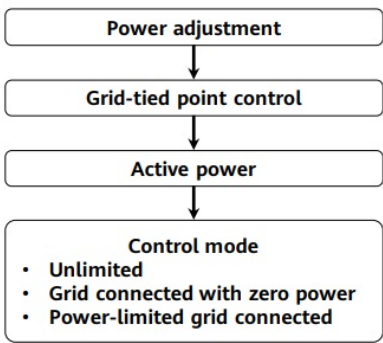


Setup Wizard (Connecting to the Inverter WLAN for Commissioning)





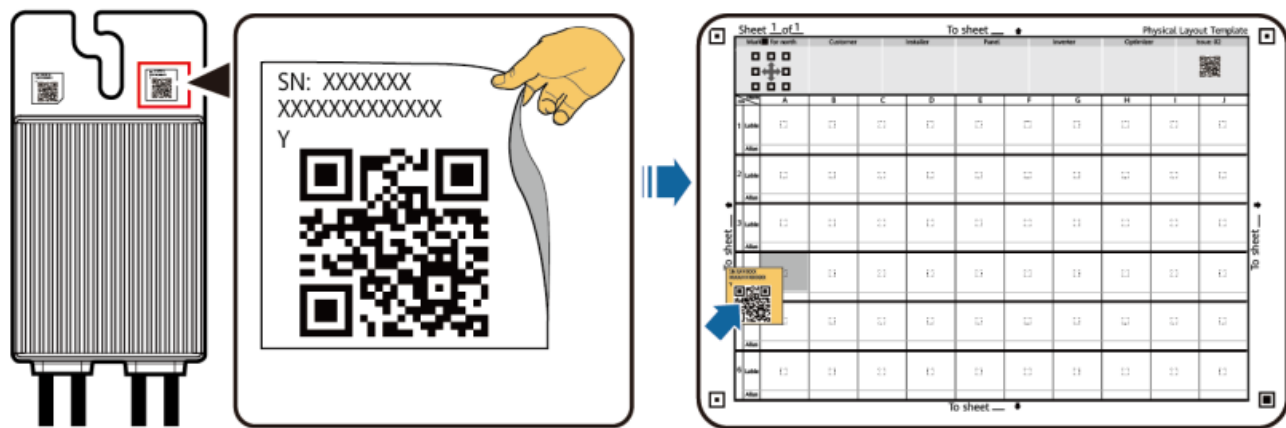
Setting Grid-tied Point Control



Physical Layout of Smart PV Optimizers

Attaching SN Labels

Remove the SN labels from optimizers and attach them to the physical layout template based on the actual positions of the optimizers in the plant.



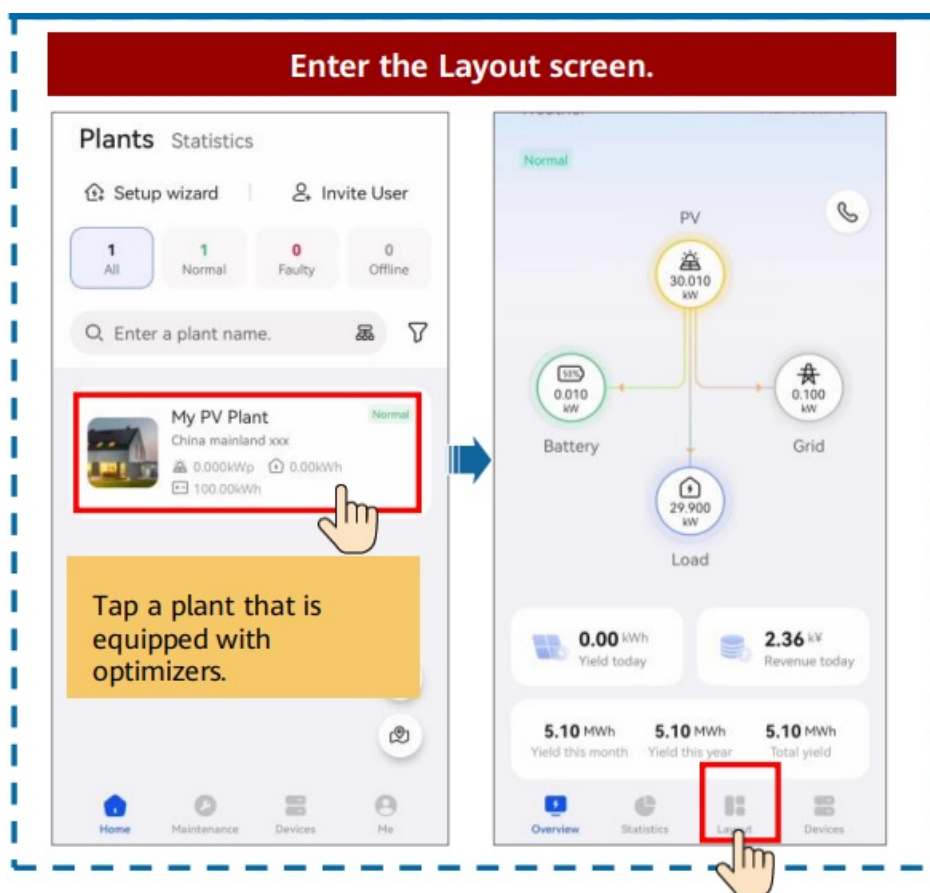
Taking a Photo of the Physical Layout Template

Ensure that the four positioning points on the template are within the frame.

Positioning point

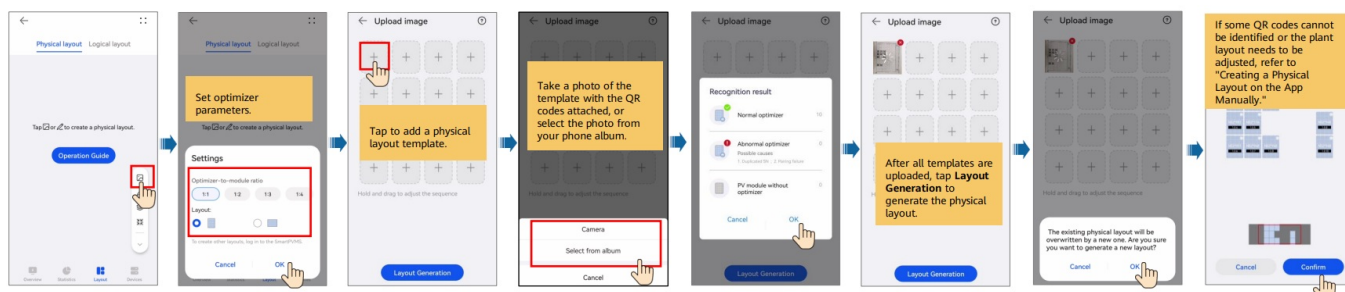


Generating a Physical Layout on the App



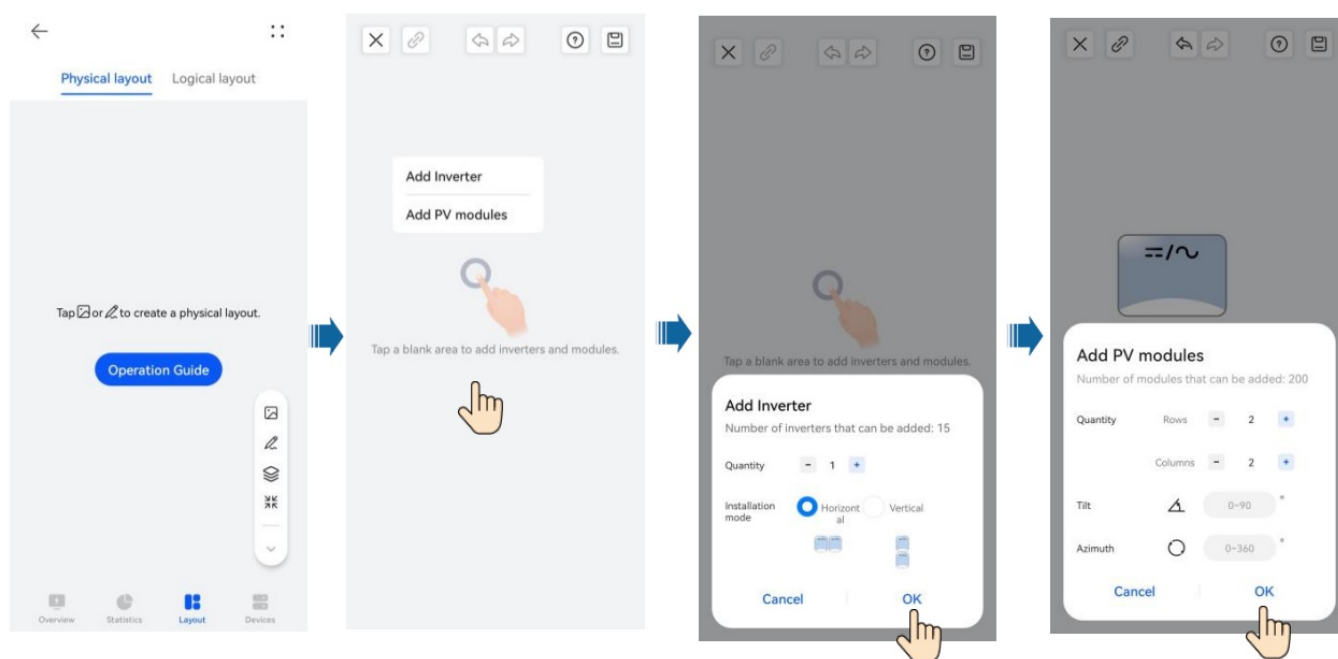
Generating a Physical Layout on the App Automatically

Upload the template and generate a layout.

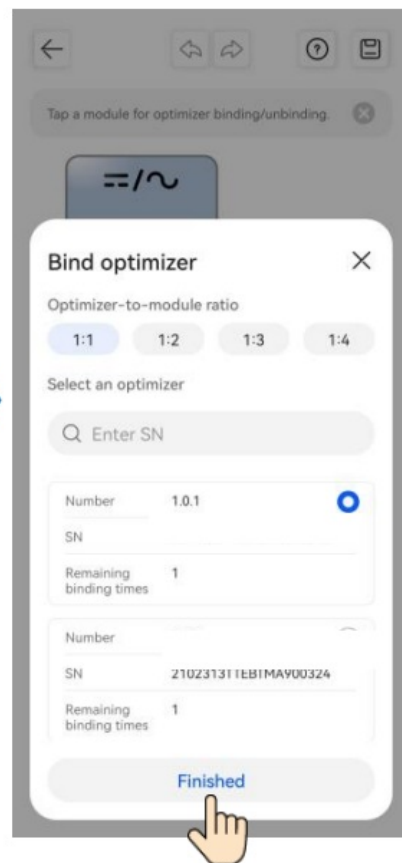
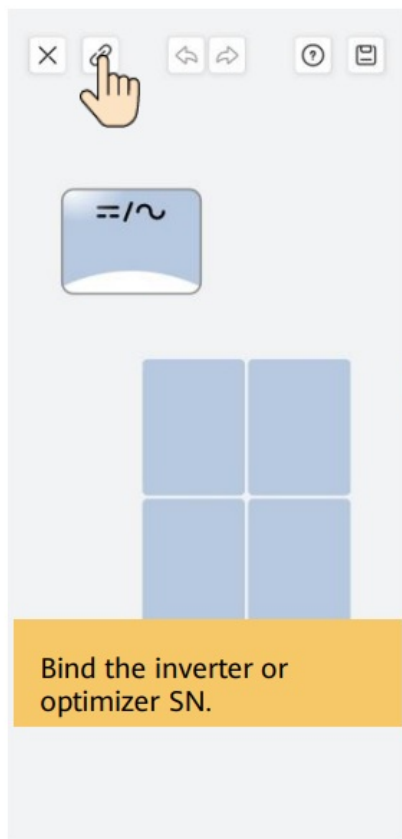


Creating a Physical Layout on the App Manually

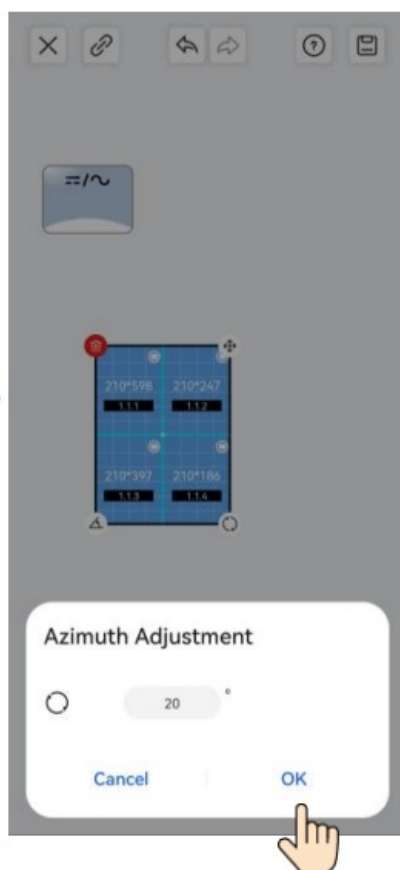
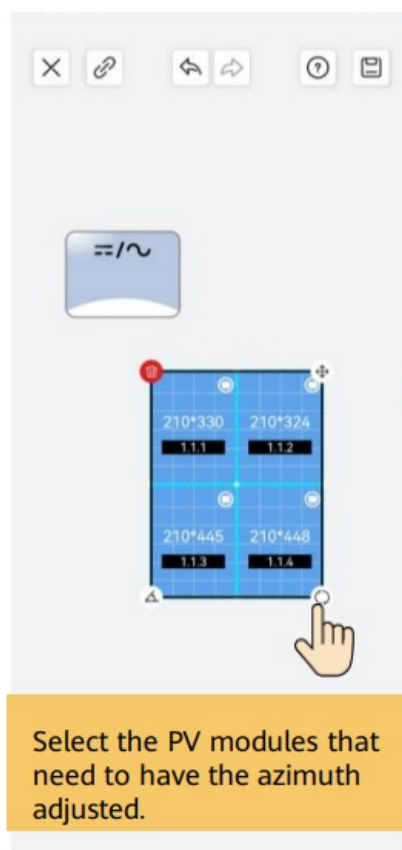
Edit the physical layout and specify the quantity of inverters and PV modules as required.

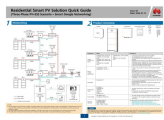


Bind the inverter or optimizer SN.




Adjust the physical layout.





[HUAWEI YDS60-C24 FusionSolar SmartPVMS Smart Dongle](#) [pdf] User Guide
YDS60-C24, YDS60-C24 FusionSolar SmartPVMS Smart Dongle, FusionSolar SmartPVMS Smart Dongle, SmartPVMS Smart Dongle, Smart Dongle, Dongle

References

-  support.huawei.com/enterprise/en/doc/EDOC1100222020/a0053780
-  support.huawei.com/enterprise/en/doc/EDOC1100265210/bdfcaf73
-  support.huawei.com/enterprise/en/doc/EDOC1100303087/1e1cedea
-  support.huawei.com/enterprise/en/doc/EDOC1100366800/e0fa13b5
- [User Manual](#)

[Manuals+](#), [Privacy Policy](#)

This website is an independent publication and is neither affiliated with nor endorsed by any of the trademark owners. The "Bluetooth®" word mark and logos are registered trademarks owned by Bluetooth SIG, Inc. The "Wi-Fi®" word mark and logos are registered trademarks owned by the Wi-Fi Alliance. Any use of these marks on this website does not imply any affiliation with or endorsement.