



HUAWEI WS7001-30 Wireless Router IEEE 802.11ax User Guide

[Home](#) » [Huawei](#) » HUAWEI WS7001-30 Wireless Router IEEE 802.11ax User Guide 



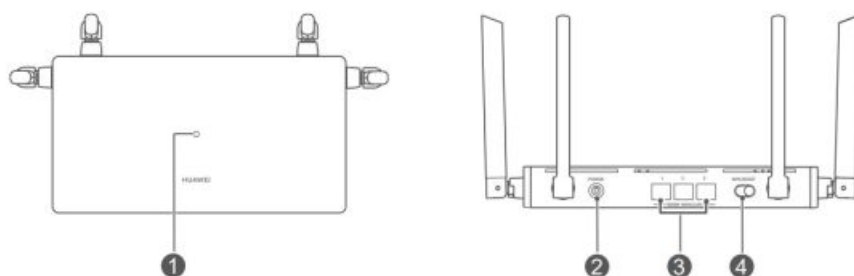
HUAWEI

WS7001-30 Wireless Router IEEE 802.11ax User Guide

Contents

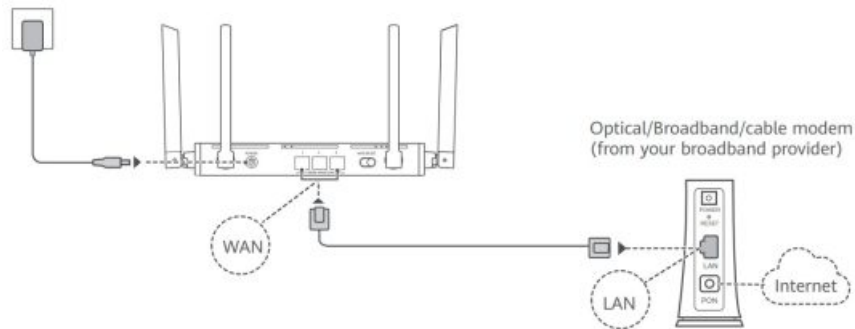
- [1 Getting Started](#)
- [2 Step 1: Connecting the cables](#)
- [3 Step 2: Configuring the network settings](#)
- [4 Indicator](#)
- [5 Frequently Asked Questions \(FAQ\)](#)
- [6 Safety information](#)
- [7 Legal Notice](#)
- [8 Documents / Resources](#)
 - [8.1 References](#)
- [9 Related Posts](#)

Getting Started



1. Indicator
2. Power port
3. WAN/LAN c port: Connects to the Internet (such as an optical modem, broadband modems, etc.) and wired network device such as a computer.
4. WPS/RESET button: Provides the functions of both the WPS button and the RESET button.

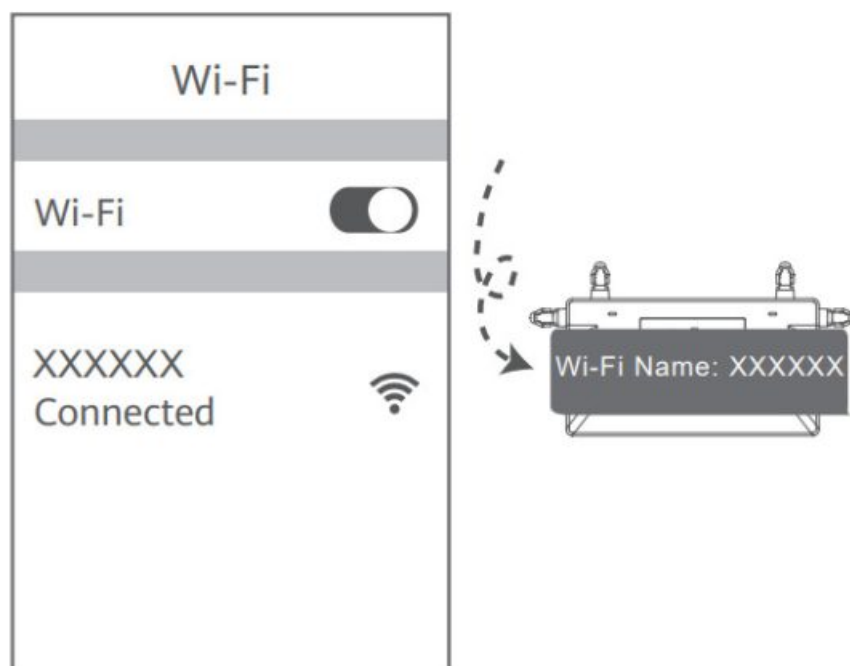
Step 1: Connecting the cables



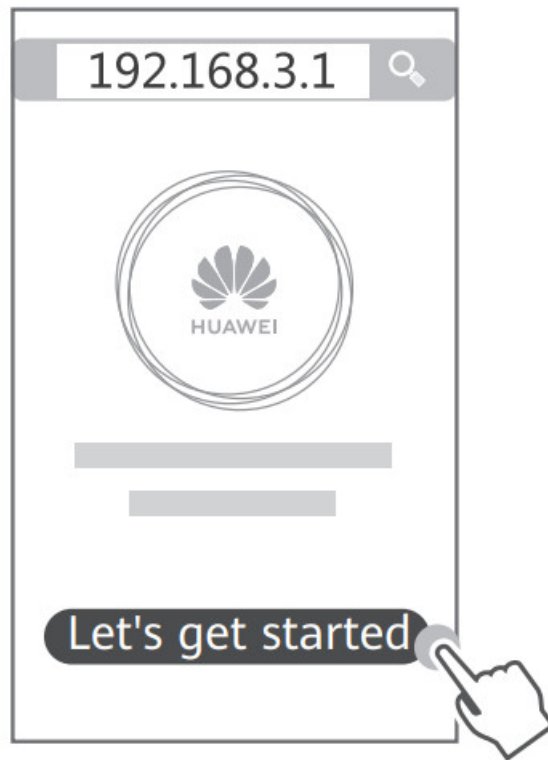
- Erect all antennas upright to ensure optimized Wi-Fi® signal.
- If the indicator stays red, this indicates that the router is not connected to the Internet. Please refer to “Step 2: Configuring the network settings”.
- For routers that support WAN/LAN auto-adaptation, the network ports are WAN/LAN combo ports. You can also specify a fixed WAN port on the router’s web-based management page.

Step 2: Configuring the network settings

1. Connect your mobile phone or computer to the router’s Wi-Fi network (no password required).
Check for the Wi-Fi name on the bottom of the new router.

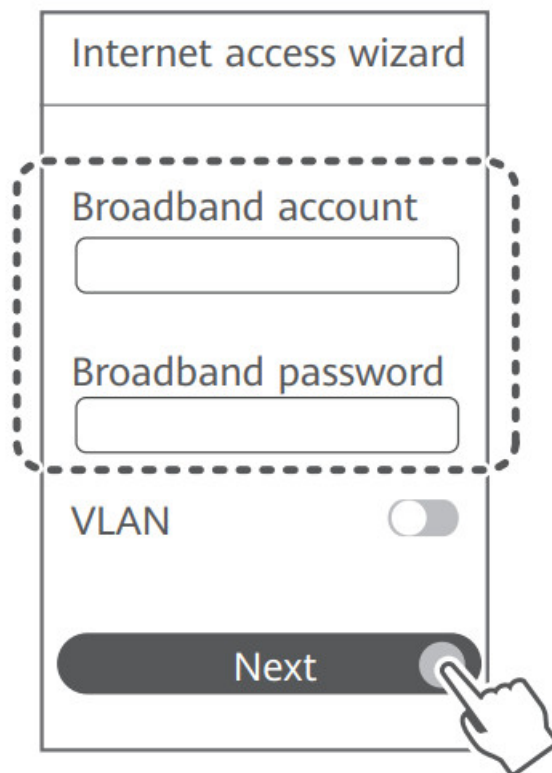


2. Open the browser, you will be automatically redirected. (If the page is not displayed automatically, enter 192.168.3.1).



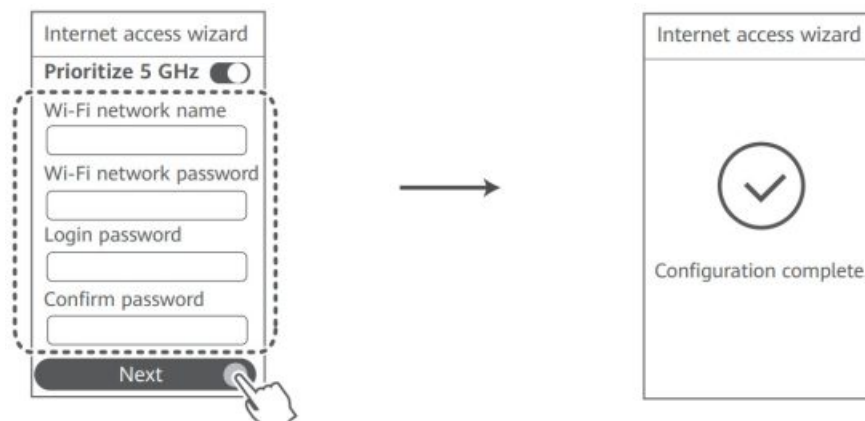
3. Enter your broadband account and password.

If your Internet connection does not require an account and password, please skip to the next step.



- If you have forgotten your broadband account and password, contact your broadband carrier to obtain a broadband account and password.
- If you need to configure VLAN on your network, contact your broadband carrier to confirm the VLAN parameters, and enable the VLAN switch on the screen.

4. **Set a new Wi-Fi name, Wi-Fi password, and admin password for the new router.**



i Enable Prioritize 5 GHz: Priority usage of 5 GHz Wi-Fi band over 2.4 GHz band when signal strength is equal to increase connection speeds.

Manage the router with our mobile app

Scan the QR code to download and install the HUAWEI AI Life App on your mobile phone or tablet. You can use the app to manage your router.



Indicator

Steady green	Connected to the network
Steady red	Not connected to the network <ul style="list-style-type: none"> • Lose cable or connect error. Check the cable. • Broadband network error. Contact your broadband carrier.
Flashing	The router has detected a pairable device. When other HUAWEI devices (support HarmonyOS Connect) are detected, the indicator on the HUAWEI WiFi AX2 will flash. When this happens, press the HUAWEI WiFi AX2's WPS/RESET button. The indicator should flash quickly, indicating that the pairable device is connecting to the HUAWEI WiFi AX2. The connection process is complete when the indicator stops flashing. i If you touched the WPS/RESET button by accident, wait for 2 minutes till the indicator returns to normal.

Frequently Asked Questions (FAQ)

Q1: What can I do if I encounter any of the following issues when configuring the router?

- If your device did not detect the router's Wi-Fi: Ensure that the router is powered on. Wait for a moment (till the router is started) and try to search again on your device.
- If you cannot visit the router's configuration page on your device: Ensure that your device is connected to the

router's Wi-Fi network, and then enter 192.168.3.1 in the browser to visit this page on your device.

- If the page displays "Cable disconnected": Ensure that the router's WAN port is connected to the modem's LAN port, and the modem has Internet access. Check that all joints are securely connected and in good contact, and the network cables are in good condition.

If the issue persists, restore the router to the factory settings, and follow the guide to reconnect the cables and configure the router.

Q2: How do I restore the router to its factory settings?

Connect the router to the power supply and wait until the router completes the startup process.

Use a needle or pin to press the WPS/RESET button on the router for more than 8 seconds until the indicator light goes out. Wait for the router to complete the restart process. When the indicator turns red, this indicates that the router has been restored to its factory settings.



If the router has been factory reset, you need to configure it again.

Q3: How do I connect an add-on HUAWEI router to my HUAWEI WiFi AX2's network?

You can connect the router in either of the following ways:

- Wired connection. Connect the WAN port of the add-on router (new or restored to factory settings) to the LAN port of the configured HUAWEI WiFi AX2 using an Ethernet cable.
- Wireless connection. Step 1: Place the add-on router (new or restored to factory settings) within one meter of the configured HUAWEI WiFi AX2 and connect it to the power supply. Step 2: When the indicator on the HUAWEI WiFi AX2 starts to flash, press the WPS/RESET button on it.

Wait until the indicator on the add-on router shows it is connected to the network.



"HUAWEI router" refers to routers that support HarmonyOS Mesh+. Please check if your device supports such a feature.

Q4: How do I connect a Wi-Fi device to my router using WPS?

When your router is powered on, press its WPS/RESET button, and then press the WPS button on the Wi-Fi device (such as a phone) within two minutes, to initiate standard WPS negotiation and connect the Wi-Fi device to the router's Wi-Fi network.

Q5: What should I do if I forget my login password for the app or the router's web-based management page?

Try using the router's Wi-Fi password to log in. If the issue persists, restore the router to the factory settings.

Q6: What should I do if some of my devices cannot find or connect to the Wi-Fi?

This router supports Wi-Fi 6, which is the new generation Wi-Fi technology that can improve network speeds for Wi-Fi 6 devices. However, some earlier devices, such as laptops using Intel network adapters, may not be able to find or connect to the Wi-Fi due to compatibility issues. In this case, try to update the software version of the devices by referring to the device instruction manual, or perform the following operations:

Update the router and the HUAWEI smart device management app to the latest version. Then open the app, touch the router icon, touch Show more, search for and enable Wi-Fi 5 backup network, and connect your device to the Wi-Fi 5 network.

Safety information

Operation and safety

- Do not use your device if using the device is prohibited. Do not use the device if doing so causes danger or interference with other electronic devices.
- Pacemaker manufacturers recommend that a minimum distance of 15 cm be maintained between a device and a pacemaker to prevent potential interference with the pacemaker.

If using a pacemaker, hold the device on the side opposite the pacemaker and do not carry the device in your front pocket.

- Avoid dusty, damp, or dirty environments. Avoid magnetic fields. Using the device in these environments may result in circuit malfunctions.
- Ideal operating temperatures are 0 °C to 40 °C. Ideal storage temperatures are -40 °C to +70 °C. Extreme heat or cold may damage your device or accessories.
- Keep the device and accessories in a well-ventilated and cool area away from direct sunlight. Do not enclose or cover your device with towels or other objects. Do not place the device in a container with poor heat dissipation, such as a box or bag.
- The device should be installed and operated with a minimum distance of 20 cm between the radiator and your body.
- Using an unapproved or incompatible power adapter, charger, or battery may damage your device, shorten its lifespan, or cause a fire, explosion, or other hazards.
- For pluggable devices, the socket-outlet shall be installed near the devices and shall be easily accessible.
- Unplug the power adapter from electrical outlets and the device when not in use.
- Do not touch the device or the charger with wet hands. Doing so may lead to short circuits, malfunctions, or electric shocks.
- The device should be installed at a position no more than 2 m from the ground.

Disposal and recycling information

The symbol on the product, battery, literature, or packaging means that the products and batteries should be taken to separate waste collection points designated by local authorities at the end of the lifespan. This will ensure that EEE waste is recycled and treated in a manner that conserves valuable materials and protects human health and the environment.

For more information, please contact your local authorities, retailer, or household waste disposal service or visit the website <https://consumer.huawei.com/en/>.

Reduction of hazardous substances

This device and its electrical accessories comply with local applicable rules on the restriction of the use of certain hazardous substances in electrical and electronic equipment, such as EU REACH regulation, RoHS and Batteries (where included) directive. For declarations of conformity about REACH and RoHS, please visit the website <https://consumer.huawei.com/certification>.

EU regulatory conformance

Statement

Hereby, Huawei Device Co., Ltd. declares that this device WS7001 is in compliance with the following Directive: RED 2014/53/EU, RoHS 2011/65/EU, ErP 2009/125/EC.

The full text of the EU declaration of conformity, the detailed ErP information, and the most recent information about accessories & software are available at the following internet address: <https://consumer.huawei.com/certification>.

Restrictions in the 5 GHz band:

The 5150 to 5350 MHz frequency range is restricted to indoor use in AT, BE, BG, CH, CY, CZ, DE, DK, EE, EL, ES, FI, FR, HR, HU, IE, IS, IT, LI, LT, LU, LV, MT, NL, NO, PL, PT, RO, SE, SI, SK, TR, UK(NI).

Frequency Bands and Power

The frequency bands and transmitting power (radiated and/or conducted) nominal limits applicable to this radio equipment are as follows: Wi-Fi 2.4G: 20 dBm, Wi-Fi 5G: 5150-5350 MHz: 23 dBm, 5470-5725 MHz: 30 dBm.

Frequency Bands and Power (Malaysia)

The frequency bands and transmitting power (radiated and/or conducted) nominal limits applicable to this radio equipment are as follows: Wi-Fi 2.4G: 20 dBm, Wi-Fi 5G: 5150-5350 MHz: 23 dBm, 5470-5590 MHz: 30 dBm.

Frequency Bands and Power (Bahrain)

The frequency bands and transmitting power (radiated and/or conducted) nominal limits applicable to this radio equipment are as follows: Wi-Fi 2.4G: 20 dBm, Wi-Fi 5G: 5150-5350 MHz: 23 dBm.

Legal Notice

Copyright © Huawei 2021. All rights reserved.

THIS DOCUMENT IS FOR INFORMATION PURPOSES ONLY AND DOES NOT CONSTITUTE ANY KIND OF WARRANTY.

Trademarks and Permissions

Wi-Fi®, the Wi-Fi CERTIFIED logo, and the Wi-Fi logo are trademarks of Wi-Fi Alliance.

Other trademarks, products, services, and company names mentioned may be the property of their respective owners.

Version Update

In order to improve the security of the product and provide you with a better user experience, we will push version update information to you on a regular basis when an important update is released.

Privacy Policy

To better understand how we use and protect your personal information, please see the privacy policy at <https://consumer.huawei.com/privacy-policy>.


End-User License Agreement

Please read and agree to the End User License Agreement (HUAWEI EULA) on the product's management page before using the product.




For More Help

Please visit <https://consumer.huawei.com/en/support/hotline> for the recently updated hotline and email address in your country or region.

Documents / Resources

 Quick Start Guide	HUAWEI WS7001-30 Wireless Router IEEE 802.11ax [pdf] User Guide WS7001-30, Wireless Router IEEE 802.11ax
--	---

References

-  [Certification | Legal | HUAWEI Global](#)
-  [HUAWEI Global](#)
-  [Hotline | HUAWEI Support Global](#)
-  [HUAWEI -](#)
-  [HUAWEI -HUAWEI | HUAWEI](#)
-  [banner](#)