



HUAWEI WS5200 WiFi Gigabit Wireless Router User Guide

[Home](#) » [Huawei](#) » HUAWEI WS5200 WiFi Gigabit Wireless Router User Guide 

Contents

- [1 HUAWEI WS5200 WiFi Gigabit Wireless Router](#)
- [2 Quick Start Guide](#)
- [3 Frequently Asked Questions \(FAQs\)](#)
- [4 Safety Information](#)
- [5 Documents / Resources](#)
- [6 Related Posts](#)

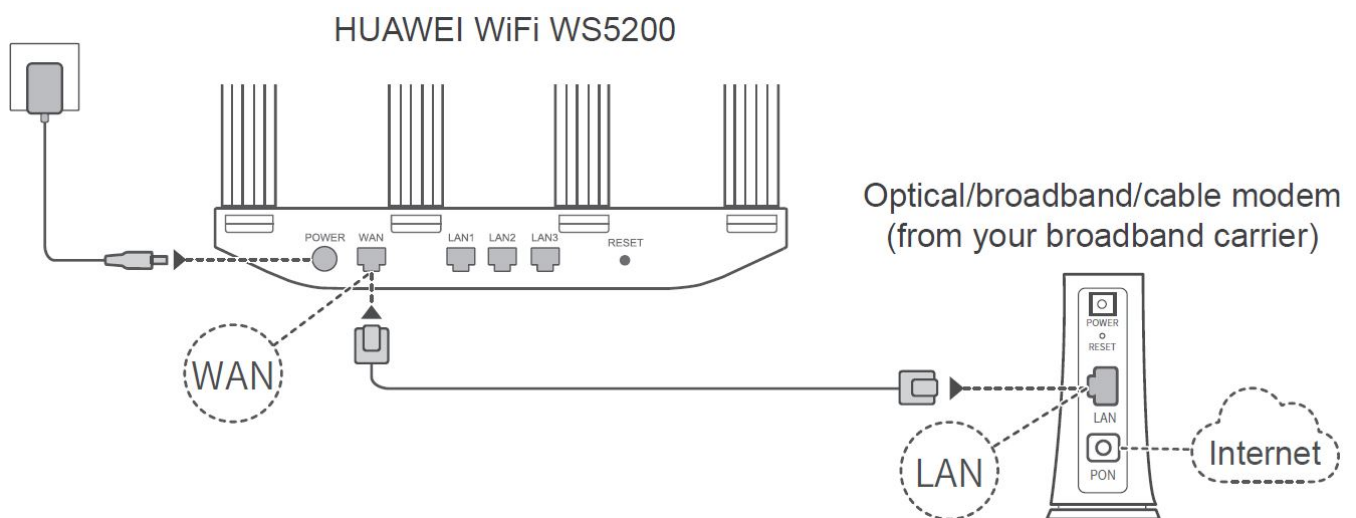


HUAWEI WS5200 WiFi Gigabit Wireless Router



Quick Start Guide

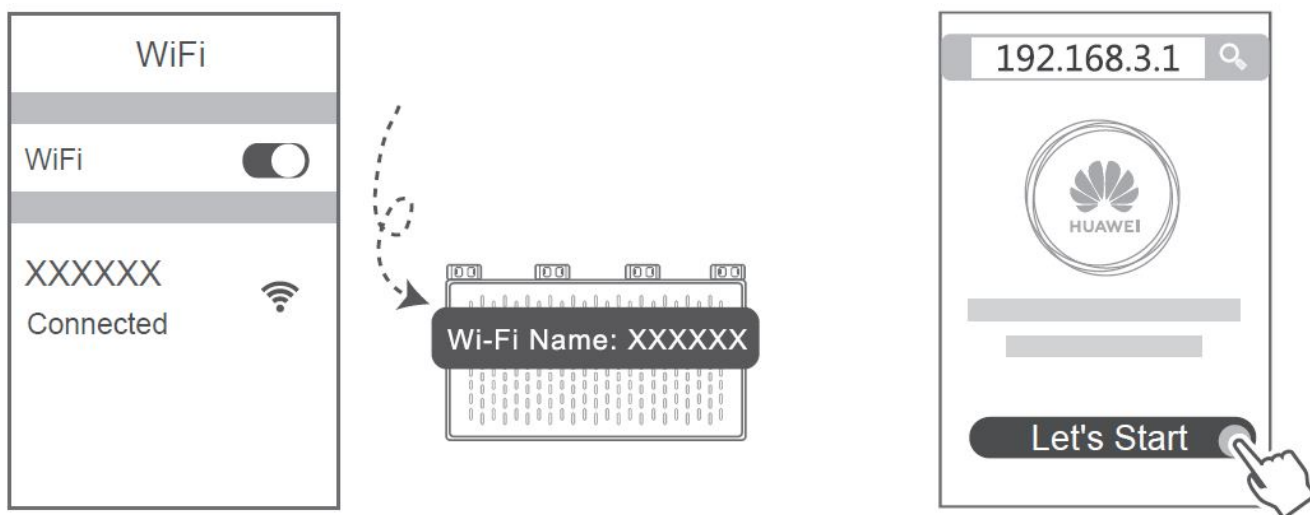
Step 1: Connecting the cables



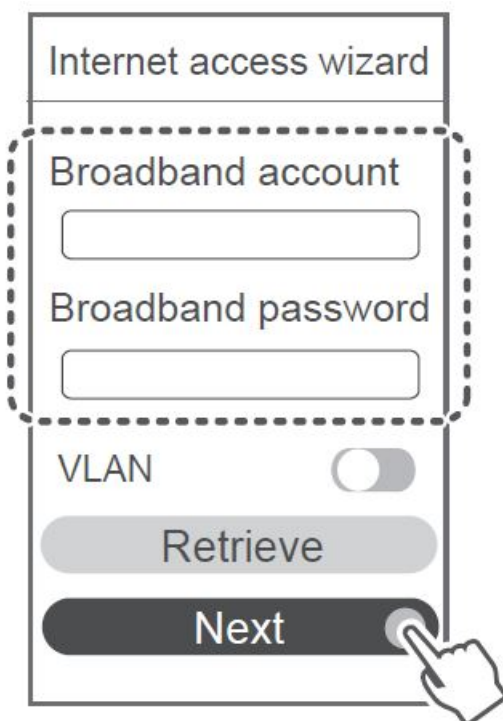
- Erect the all antennas upright to ensure optimized Wi-Fi ® signal.
- If the indicator stays red, this indicates that the router is not connected to the Internet.
Please refer to “Step 2: Configuring the network settings”.

Step 2: Configuring the network settings

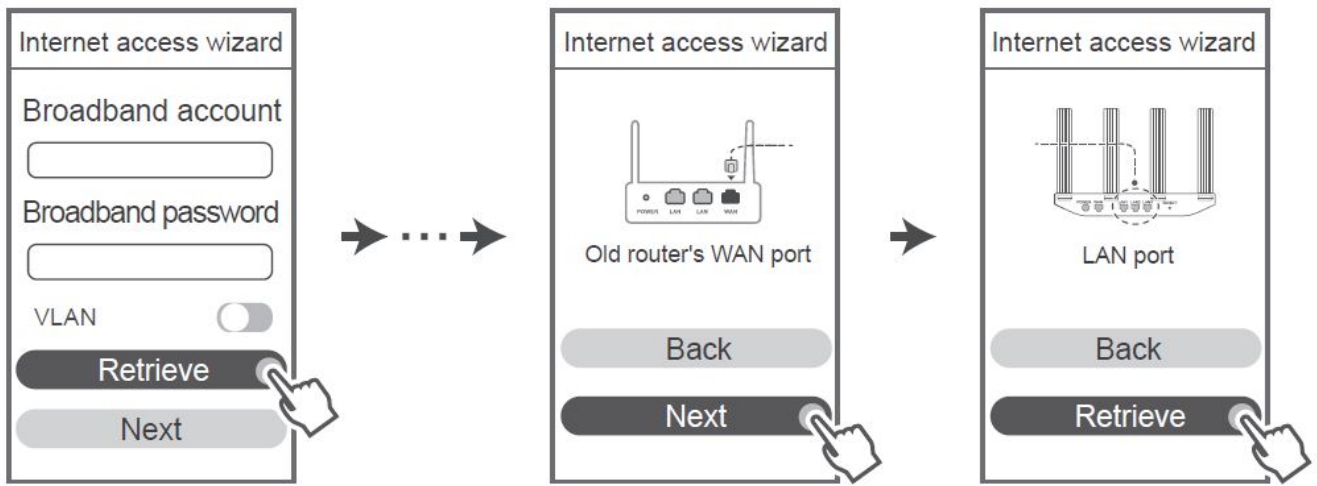
1. Connect your mobile phone or computer to the Wi-Fi network (No password).
Check for the Wi-Fi name on the bottom of the router.



2. Open the browser, you will be automatically redirected. (If the page is not displayed automatically, enter 192.168.3.1) .
3. If your Internet connection does not require an account and password:
Please skip to the next step.
If you remember your broadband account and password:
Enter your broadband account and password.
If you need to configure VLAN on your network, contact your broadband carrier to confirm the VLAN parameters, and enable the VLAN switch on the screen.
If you have forgotten your broadband account and password:
Obtain the broadband account and password from the old router. Take another Ethernet cable and connect the WAN port of the old router to the LAN port of the new router.



- Or contact your broadband carrier to obtain a broadband account and password.
- If you need to configure VLAN on your network, contact your broadband carrier to confirm the VLAN parameters, and enable the VLAN switch on the screen.
4. Set a new Wi-Fi name, Wi-Fi password, and admin password for the new router. You can use the Wi-Fi password as the router admin password.



Enable Prioritize 5 GHz: Priority usage of 5 GHz Wi-Fi band over 2.4 GHz band when signal strength is equal to increase connection speeds.

Indicator

Steady green

Connected to the Internet.

Steady red

Not connected to the Internet.

Flashing

The router has detected a pairable device.

Loose cable or connect error. Check the cable.

Broadband network error. Contact your broadband carrier.

- If you touch the H button accidentally, wait for approximately two minutes and the indicator will be reset automatically.
- ([Reset Instructions](#))
- The H button also features WPS functionality.

Manage the router with our mobile app



Scan the QR code to download and install the HUAWEI smart device management app on your mobile phone or tablet. You can use the app to manage your router.

Frequently Asked Questions (FAQs)

1. What should I do if I encounter any of the following issues when configuring the router?

- If your device did not detect the router's Wi-Fi: Ensure that the router is powered on. Wait for a moment (until the router is started) and try to search again on your device.
- If you cannot visit the router's web-based configuration page on your device: Ensure that your device is connected to the router's Wi-Fi network, and then enter 192.168.3.1 in the browser address bar to visit this page on your device.
- If the page displays "Cable disconnected": Ensure that the router's WAN port is connected to the modem's LAN port, and the modem has Internet access. Check that all contact points are securely connected and in good contact, and the network cables are in good condition.
- If the page displays "Account or password error": Please enter your broadband account and password again. If the issue persists, your broadband carrier may have bound the MAC address of your old router, causing your new router to be unable to connect. To fix this issue, select Retrieve and follow the onscreen instructions. Alternatively, contact your broadband carrier for assistance.
- If the page displays "Failed to retrieve network settings from old router": Ensure that the router is connected to a power source, and that the old router's WAN port is already connected to the new router's LAN port. Restart your old router and then touch Try again.

2. What should I do if I forget my login password for the app or the router's webbased management page?

Try using the router's Wi-Fi password to log in. If the issue persists, restore the router to its factory settings.

3. How do I restore the router to its factory settings?

Connect the router to the power supply and wait until the router completes the startup process.

Use a needle or pin to press the RESET button on the router for more than two seconds until the indicator light goes out. Wait for the router to complete the restart process. When the indicator turns red, this indicates that the router has been restored to its factory settings.

If the router has been factory reset, you need to configure it again. ([Reset and Login Instructions](#))

4. How do I pair a Wi-Fi device with my router using WPS?

When your router is powered on, press its H button, and then press the WPS button on the Wi-Fi device (such as a phone) within two minutes to initiate standard WPS negotiation and incorporate the Wi-Fi devices into the router's Wi-Fi network.

5. Does the router support 5 GHz Wi-Fi?

How do I connect to the router's 5 GHz Wi-Fi?

5 GHz Wi-Fi is supported.

The Wi-Fi names for 2.4 GHz and 5 GHz are the same by default. You will be automatically connected to the faster Wi-Fi network. If you want to use 5 GHz Wi-Fi only, you can disable the Prioritize 5 GHz feature by performing the following steps:

1. Connect your phone to the router's Wi-Fi network.
2. Enter 192.168.3.1 in your browser address bar and follow the onscreen instructions to log in.
3. Select My Wi-Fi and disable Prioritize 5 GHz. You will now be able to find two Wi-Fi network names. Connect to the Wi-Fi network with "_5G" at the end of its name.

6. How do I connect my router to the HUAWEI CPE to expand the Wi-Fi network?

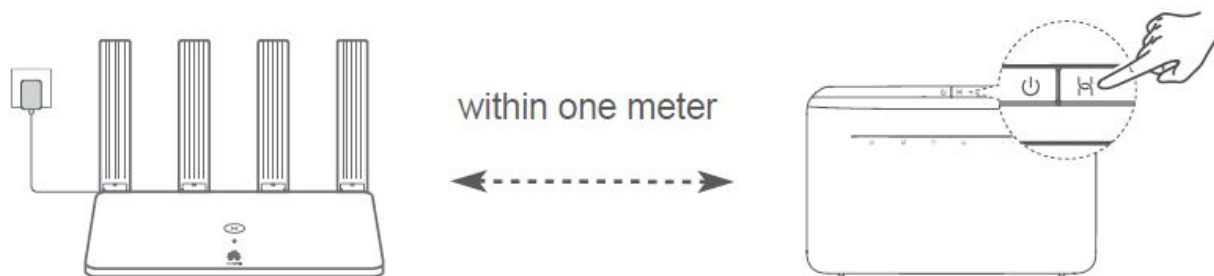
You can connect your router in either of the following ways:

- Wired connection

Place your router in a room with weak or no signal strength, then connect the WAN port of your router to the LAN port of the HUAWEI CPE using an Ethernet cable.

- Wireless connection (using the H button)

Step 1: Place the router within one meter of the HUAWEI CPE and connect the power supply.



Step 2: When the indicator on the HUAWEI CPE starts to flash, press the H button on it. Wait until the indicator on the router shows that the router is connected to the network.

Step 3: Place the router in a room with weak signal strength and connect the power supply.

- The figure is for reference only.
- Ensure that the HUAWEI CPE is connected to the Internet, and the router is new or restored to factory settings.
- Ensure that the HUAWEI CPE supports the HUAWEI HiLink function and CoAP protocol.
Please consult the distributor for details.
- Ensure that the distance between your router and the HUAWEI CPE is less than 10 meters and there are no more than two walls in between.

Safety Information

Copyright © Huawei Technologies Co., Ltd. 2021. All rights reserved.

THIS DOCUMENT IS FOR INFORMATION PURPOSE ONLY, AND DOES NOT CONSTITUTE ANY KIND OF WARRANTIES.

Trademarks and Permissions

Wi-Fi®, the Wi-Fi CERTIFIED logo, and the Wi-Fi logo are trademarks of Wi-Fi Alliance.

Other trademarks, product, service and company names mentioned may be the property of their respective owners.

Version Update

In order to improve the security of the product and provide you with a better user experience, we will push version update information to you on a regular basis when an important update is released.

Privacy Policy

To better understand how we use and protect your personal information, please read the privacy policy at <http://consumer.huawei.com/privacy-policy>.

End User License Agreement

Please read and agree to the End User License Agreement (HUAWEI EULA) on the product's management page before using the product.

Safety Information

- Do not use your device if using the device is prohibited. Do not use the device if doing so causes danger or

interference with other electronic devices.

- Pacemaker manufacturers recommend that a minimum distance of 15 cm be maintained between a device and a pacemaker to prevent potential interference with the pacemaker. If using a pacemaker, hold the device on the side opposite the pacemaker and do not carry the device in your front pocket.
- Avoid dusty, damp, or dirty environments. Avoid magnetic fields. Using the device in these environments may result in circuit malfunctions.
- Ideal operating temperatures are 0°C to 40°C. Ideal storage temperatures are -40°C to +70°C. Extreme heat or cold may damage your device or accessories.
- Keep the device and accessories in a well-ventilated and cool area away from direct sunlight. Do not enclose or cover your device with towels or other objects. Do not place the device in a container with poor heat dissipation, such as a box or bag.
- The device should be installed and operated with a minimum distance of 20 cm between the radiator and your body.
- Using an unapproved or incompatible power adapter, charger or battery may cause fire, explosion or other hazards.
- For pluggable devices, the socket-outlet shall be installed near the devices and shall be easily accessible.
- Unplug the power adapter from electrical outlets and the device when not in use.
- Do not touch the device or the power adapter with wet hands. Doing so may lead to short circuits, malfunctions, or electric shocks.

Disposal and recycling information

The crossed-out wheeled bin symbol on your product, battery, literature or packaging reminds you that all electronic products and batteries must be taken to separate waste collection points at the end of their working lives; they must not be disposed of in the normal waste stream with household garbage. It is the responsibility of the user to dispose of the equipment using a designated collection point or service for separate recycling of waste electrical and electronic equipment (WEEE) and batteries according to local laws.

Proper collection and recycling of your equipment helps ensure electrical and electronic equipment (EEE) waste is recycled in a manner that conserves valuable materials and protects human health and the environment, improper handling, accidental breakage, damage, and/or improper recycling at the end of its life may be harmful for health and environment. For more information about where and how to drop off your EEE waste, please contact your local

authorities, retailer or household waste disposal service or visit the website

<http://consumer.huawei.com/en/>.

Reduction of hazardous substances

This device and any electrical accessories are compliant with local applicable rules on the restriction of the use of certain hazardous substances in electrical and electronic equipment, such as EU REACH, RoHS and Batteries (where included) regulations, etc. For declarations of conformity about REACH and RoHS, please visit our web site

<http://consumer.huawei.com/certification>.

EU regulatory conformance

Statement

Hereby, Huawei Technologies Co., Ltd. declares that this device WS5200 V2 is in compliance with the essential requirements and other relevant provisions of Directive 2014/53/EU.

The most recent and valid version of the DoC (Declaration of Conformity) can be viewed at

<http://consumer.huawei.com/certification>.

This device may be operated in all member states of the EU.

Observe national and local regulations where the device is used.

This device may be restricted for use, depending on the local network.

Restrictions in the 2.4 GHz band:

Norway: This subsection does not apply for the geographical area within a radius of 20 km from the centre of Ny-Ålesund.

Restrictions in the 5 GHz band:

The 5150 to 5350 MHz frequency range is restricted to indoor use in: AT, BE, BG, CH, CY, CZ, DE, DK, EE, EL, ES, FI, FR, HR, HU, IE, IS, IT, LI, LT, LU, LV, MT, NL, NO, PL, PT, RO, SE, SI, SK, TR, UK(NI).

In accordance with the relevant statutory requirements in the UK, the 5150 to 5350 MHz frequency range is restricted to indoor use in the United Kingdom.

Frequency bands and power

(a) Frequency bands in which the radio equipment operates: Some bands may not be available in all countries or all areas. Please contact the local carrier for more details.

(b) Maximum radio-frequency power transmitted in the frequency bands in which the radio equipment operates: The maximum power for all bands is less than the highest limit value specified in the related Harmonized Standard.

The frequency bands and transmitting power (radiated and/or conducted) nominal limits applicable to this radio equipment are as follows:

Wi-Fi 2.4G: 20 dBm, Wi-Fi 5G: 5150-5350 MHz: 23 dBm, 5470-5725 MHz: 30 dBm.

Accessories and Software Information

It is recommended that the following accessories should be used:

Adapters: HW-120100X01 (X represents the different plug types used, which can be either A, B, C, E, I, J, K, R, U or Z, depending on your region).

The product software version is 10.0.2.2. Software updates will be released by the manufacturer to fix bugs or enhance functions after the product has been released. All software versions released by the manufacturer have been verified and are still compliant with the related rules.

All RF parameters (for example, frequency range and output power) are not accessible to the user, and cannot be changed by the user.

For the most recent information about accessories and software, please see the DoC (Declaration of Confirmation) at <http://consumer.huawei.com/certification>.

ErP Product Information

Huawei Technologies Co., Ltd. hereby declares that its products conform to the Energy-related Products Directive (ErP) 2009/125/EC.

For detailed ErP information and the user manuals required by Commission Regulation, please visit: <http://consumer.huawei.com/en/certification>.

Please visit <http://consumer.huawei.com/en/support/hotline> for recently updated hotline and email address in your country or region.

Documents / Resources

[illegible]