

  
HUAWEI  
HUAWEI SmartGuard-  
63A Single Phase  
Backup System



# HUAWEI SmartGuard-63A Single Phase Backup System User Guide

[Home](#) » [Huawei](#) » HUAWEI SmartGuard-63A Single Phase Backup System User Guide 

## Contents

- [1 HUAWEI SmartGuard-63A Single Phase Backup System](#)
- [2 Product Usage Instructions](#)
- [3 Installation Requirements](#)
- [4 Loads Connected to the SmartGuard](#)
- [5 Installing the Device](#)
- [6 Opening the Maintenance Compartment](#)
- [7 Electrical Connections](#)
- [8 Turning Off the Bypass Switch](#)
- [9 Documents / Resources](#)
  - [9.1 References](#)
- [10 Related Posts](#)



**HUAWEI SmartGuard-63A Single Phase Backup System**



## Specifications

- Model: SmartGuard-63A-(T0, AUT0)
- Main Circuit Breaker: 63A
- Part Number: 31500JUP

## Product Usage Instructions

### Loads Connected to the SmartGuard

If the power of backup loads exceeds the maximum off-grid power of the system, the inverter may shut down due to overload. In this case, you need to shut down some loads or connect unimportant loads to the non-backup load port.

### Installation Conditions

Make sure the main circuit breaker is rated at 63A. All loads should be properly connected to avoid overload issues.

### Maintenance

Apply silicone grease or paint for protection. Open the maintenance compartment when needed.

### Power-On and Commissioning

Remove the bypass switch latch, turn on the bypass switch, and follow the commissioning instructions provided. Ensure that the residential backup load power does not exceed the off-grid operating power of the system.

## FAQ

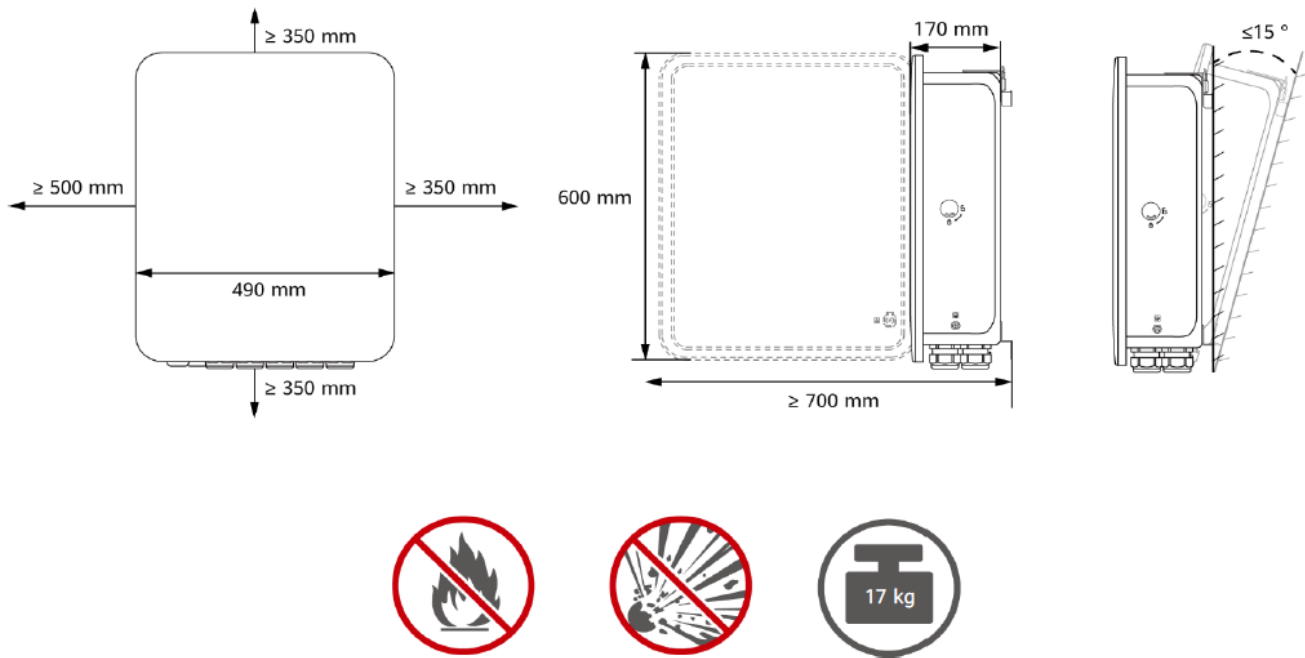
### Q: What should I do if there is an overload?

A: If an overload occurs, shut down some loads or connect unimportant loads to the non-backup load port to prevent the inverter from shutting down.

Before installing the equipment, read the user manual carefully to get familiar with product information and safety

precautions. The product warranty does not cover equipment damage caused by failure to follow the storage, transportation, installation, and usage guidelines specified in this document and the user manual. Scan the QR code on the equipment to view the user manual and safety precautions. The information in this document is subject to change without notice. Every effort has been made in the preparation of this document to ensure accuracy of the contents, but all statements, information, and recommendations in this document do not constitute a warranty of any kind, express or implied.

### Installation Requirements

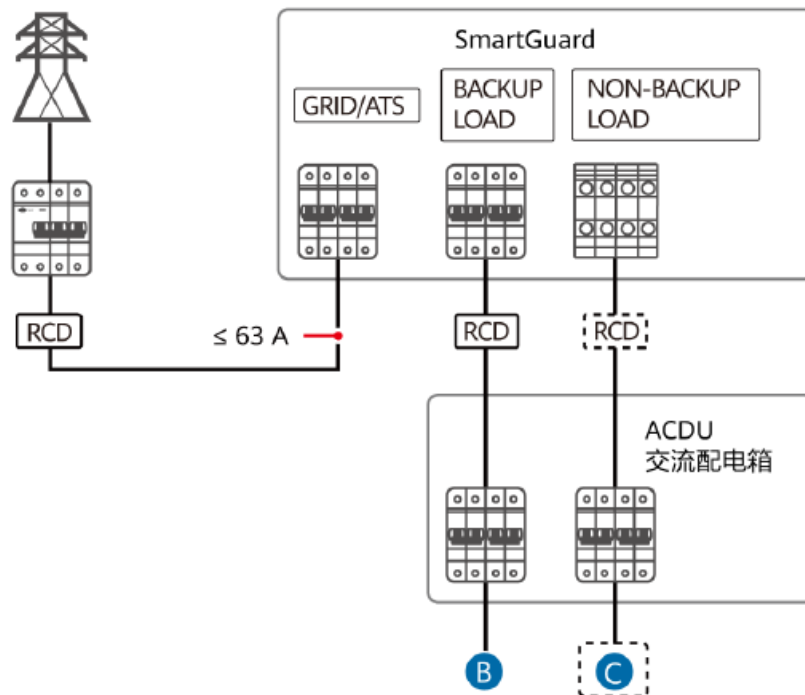


### Loads Connected to the SmartGuard

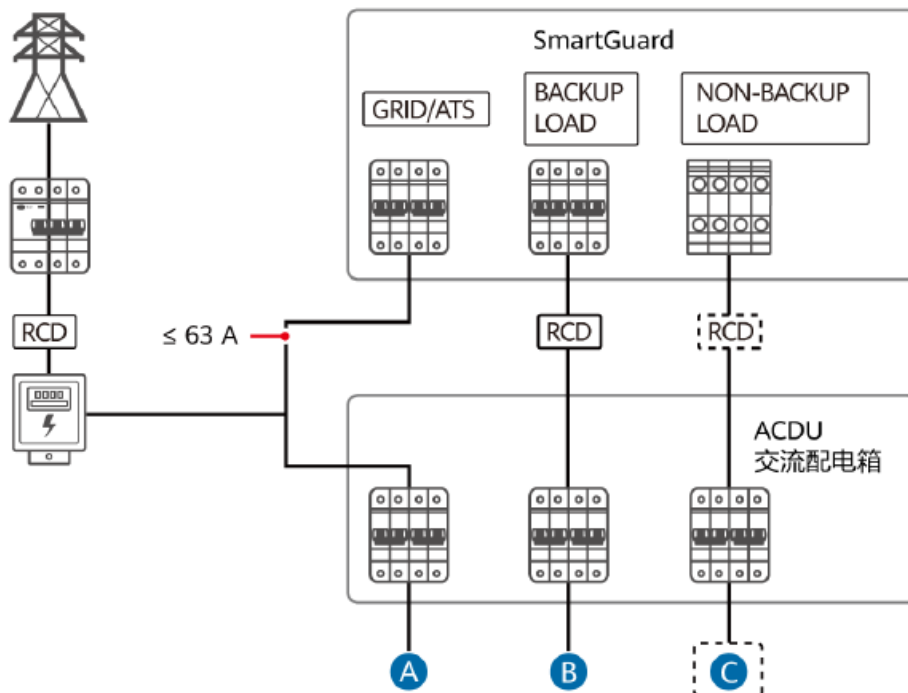
EN	Main circuit breaker	① All loads connected	② Some loads connected
	$\leq 63$ A	✓	✓
	$> 63$ A	✗	✓

If the power of backup loads exceeds the maximum off-grid power of the system, the inverter may shut down due to overload. In this case, you need to shut down some loads or connect unimportant loads to the non-backup load port.

1. All loads connected

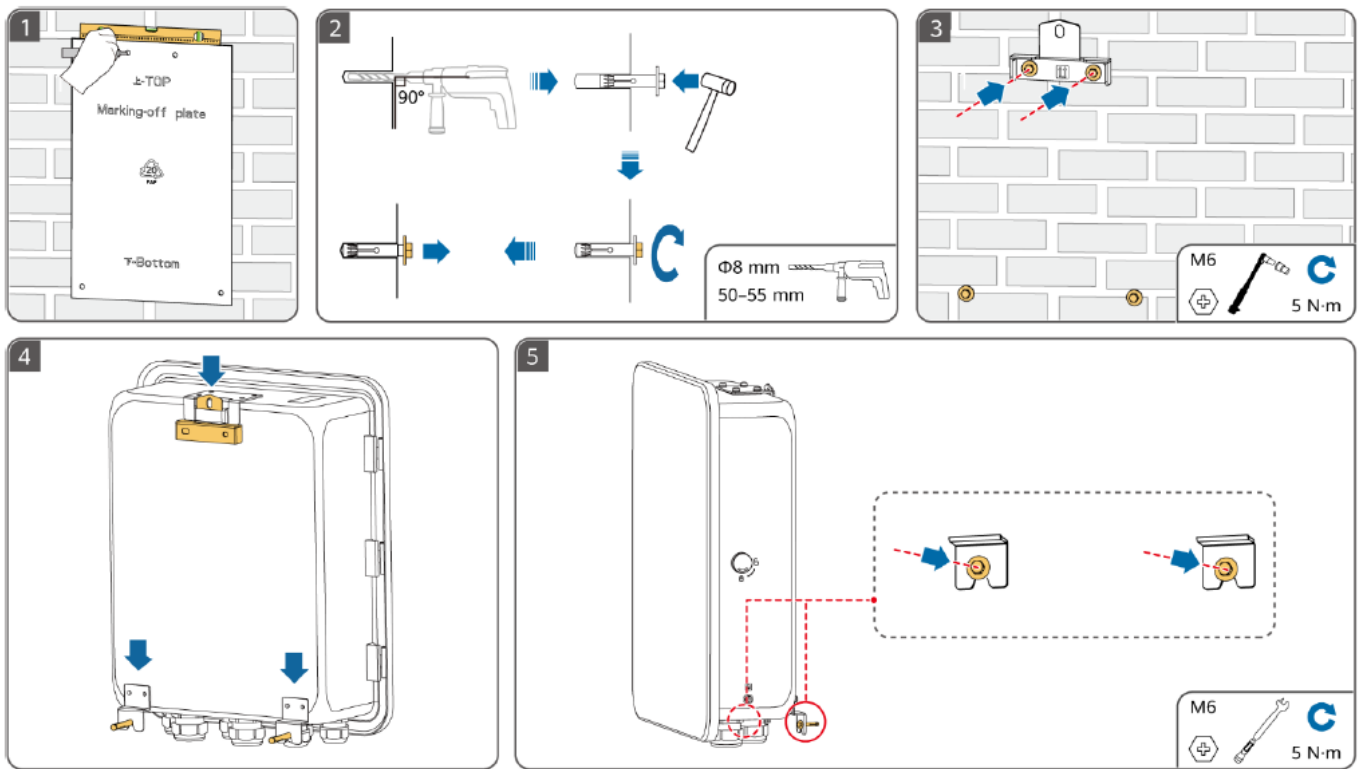


2. Some loads connected

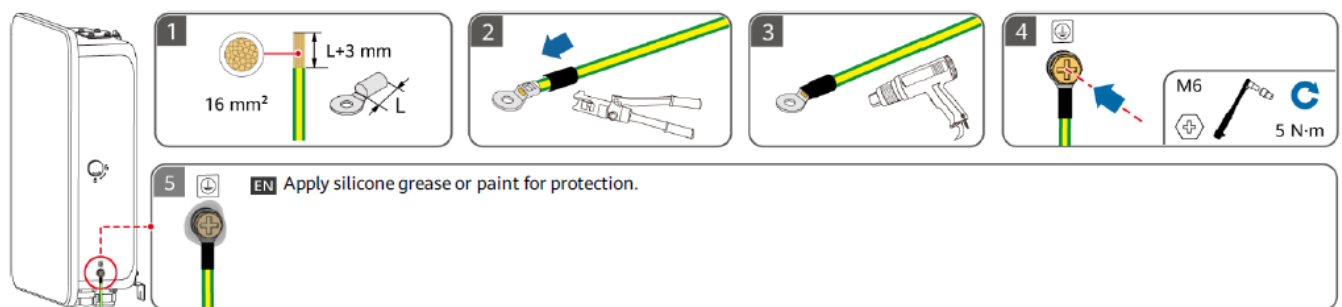


- Loads not connected
- BACKUP LOAD
- NON-BACKUP LOAD

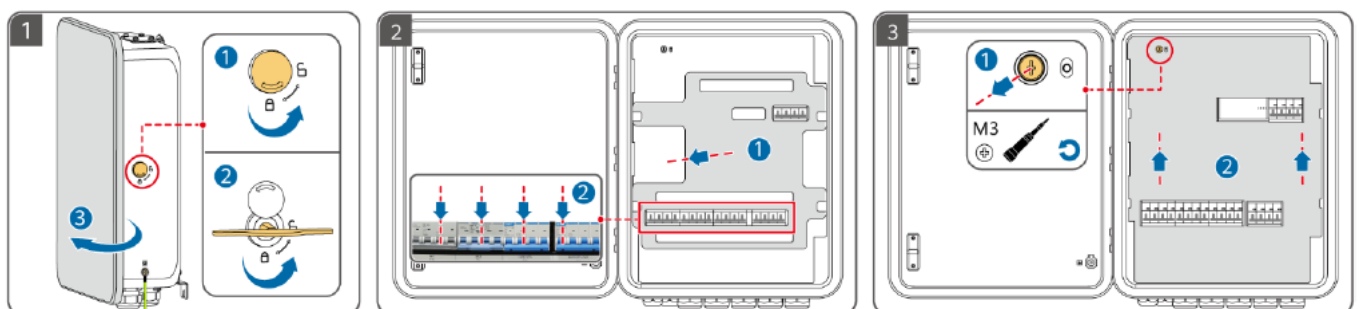
## Installing the Device



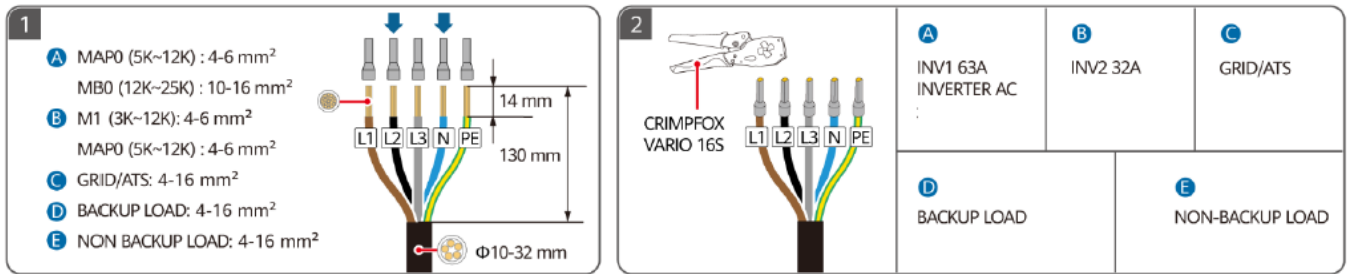
## Installing a PE Cable



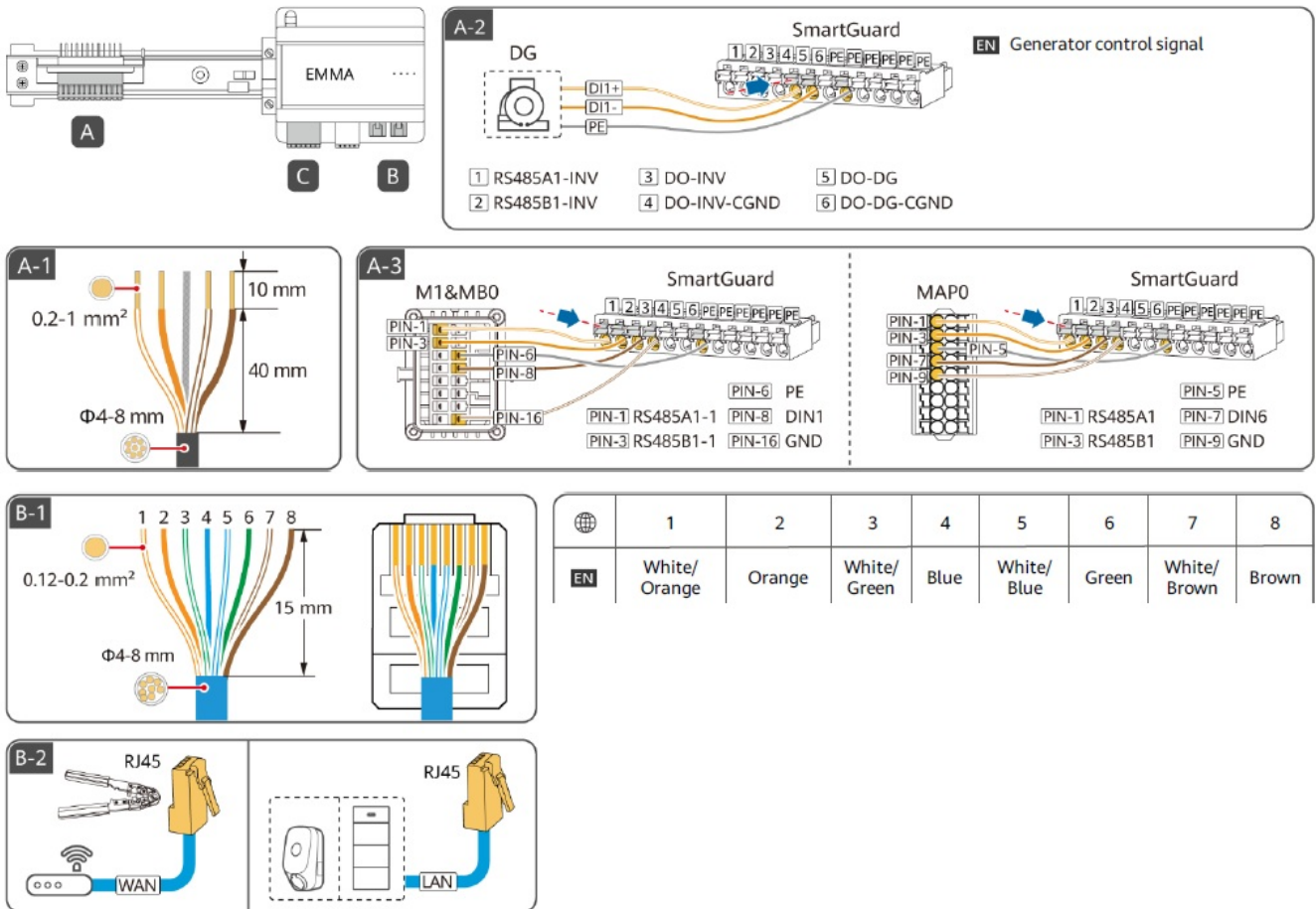
## Opening the Maintenance Compartment

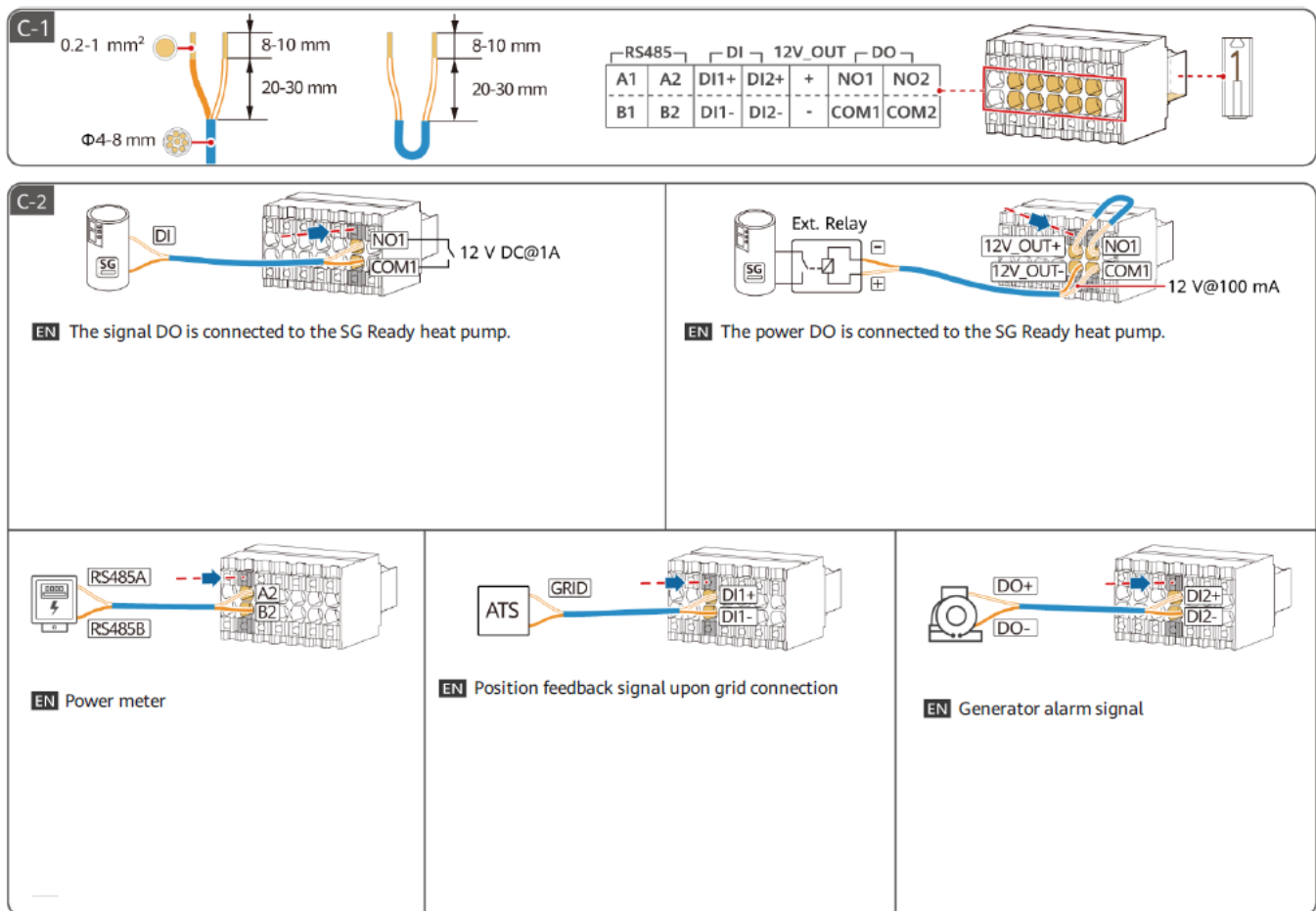


## Preparing AC Power Cables



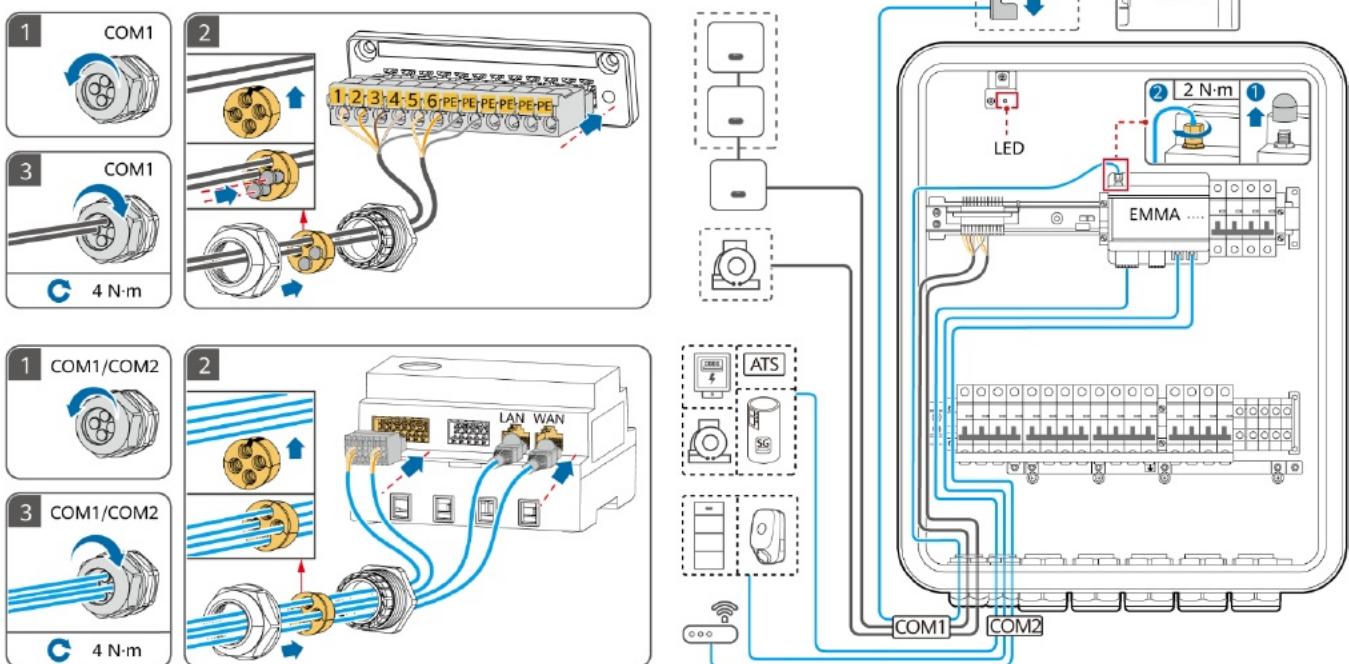
For details about how to install smart appliances, see the Residential Smart PV Solution User Manual (EMMA). You can obtain the document by scanning the QR code in this quick guide.





## Electrical Connections

**EN** Connecting Signal Cables

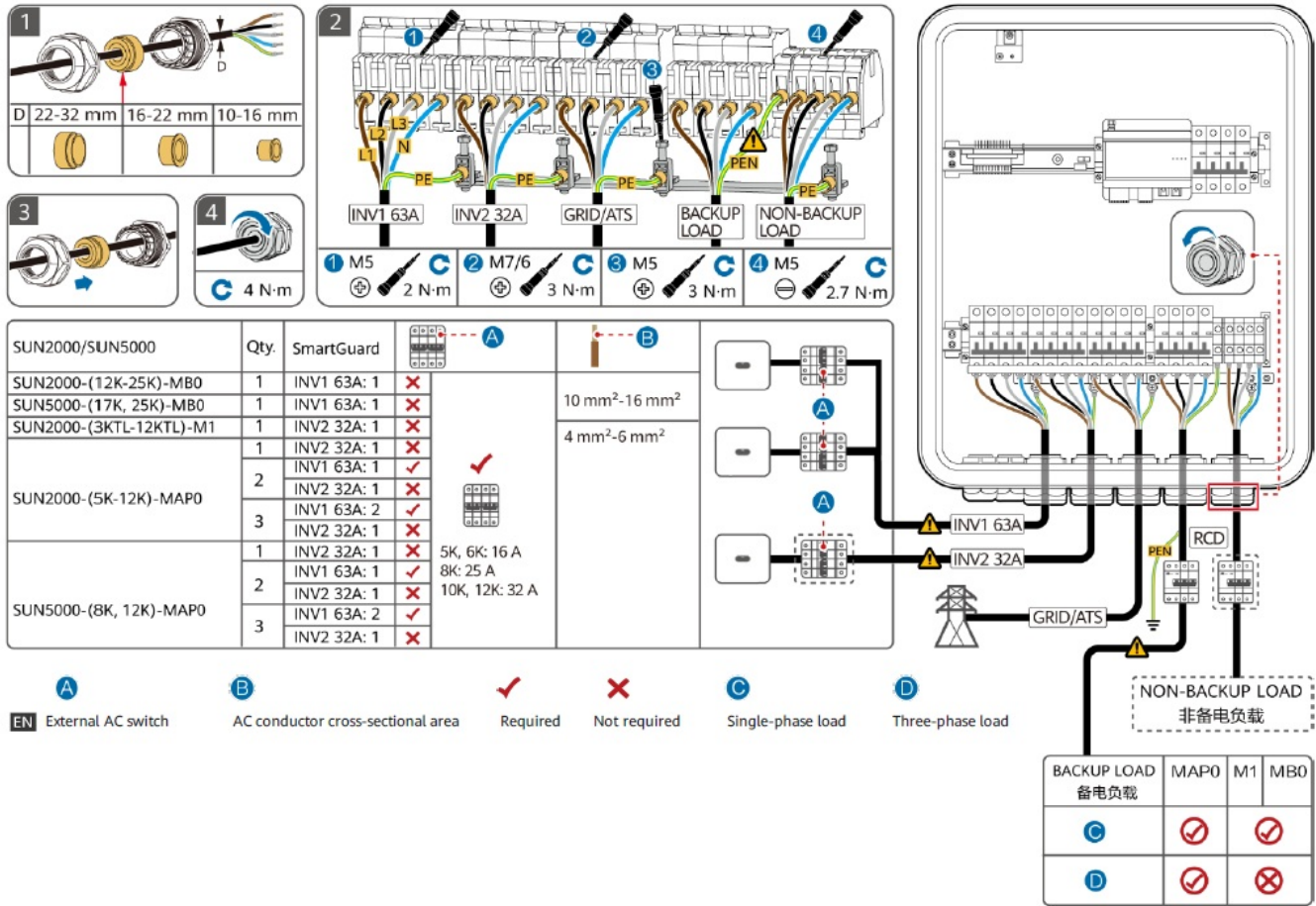


## Connecting AC Power Cables

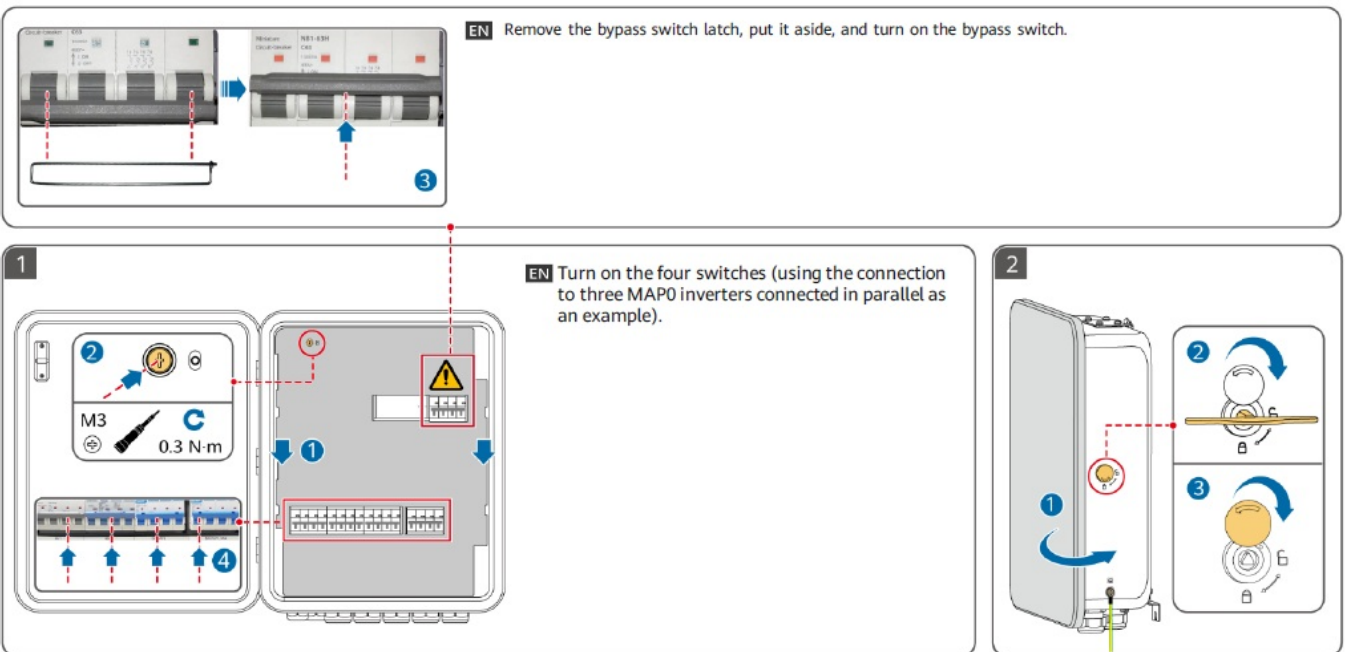
① Inverter (INV): Connect the inverter to the SmartGuard based on the INV1/INV2 port requirements. Only the MAP0 series supports parallel connections of up to three inverters, but the SUN2000-(5K-12K)-MAP0 and



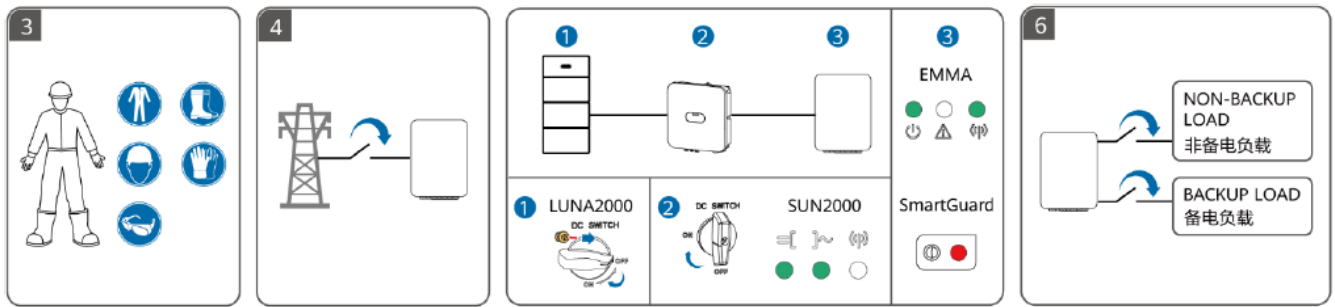
SUN5000-(8K, 12K)-MAP0 cannot be used together. If the AC input power cables recommended for the inverter are used and the AC switch on the SmartGuard does not match the AC switch on the inverter, install an AC switch as required by the inverter to ensure that the inverter can be safely disconnected from the SmartGuard when an exception occurs. ② RCD: A residual current device (RCD) must be installed before the backup load. ③ Ensure that the neutral wires of the backup load, power grid, non-backup load, and inverter are not connected outside the SmartGuard. ④ NON-BACKUP LOAD: Both single-phase loads and three-phase loads can be connected to this port. ⑤ The PEN of the SmartGuard-63A-T0 backup load port must be connected to the ground bar of the ACDB. Do not connect the PEN of the SmartGuard-63A-AUT0 backup load port to the ground bar.



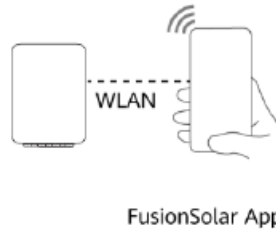
## Power-On and Commissioning



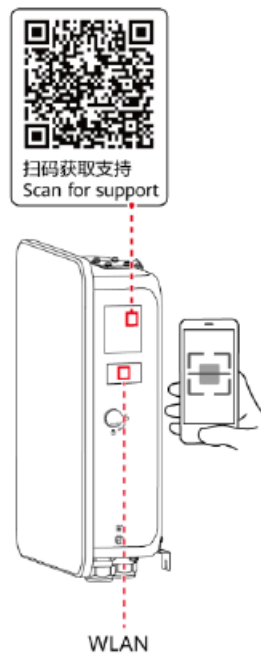




## Commissioning

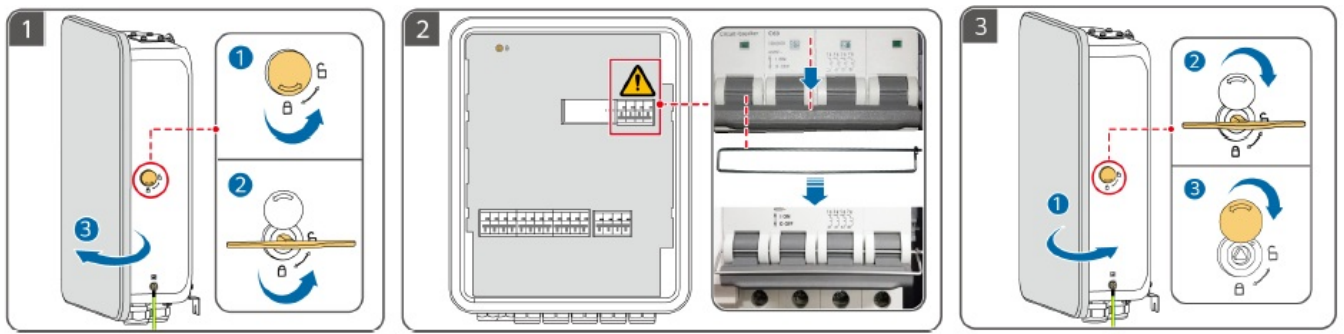


① Scan the QR code for instructions of commissioning and other operations. ② For details about the procedure for power-on and commissioning without mains power, see the user manual. ③ If there is an alarm indicating that the bypass switch is turned on during power-on, you do not need to handle the alarm.



## Turning Off the Bypass Switch

1. After device commissioning is complete, power off the system, open the maintenance compartment door, turn off the bypass switch, and reinstall the bypass switch latch.
2. During normal use, do not operate the bypass switch and ensure that it is off. ③ Ensure that the residential backup load power does not exceed the off-grid operating power of the system.



## Documents / Resources

	<p><b><a href="#">HUAWEI SmartGuard-63A Single Phase Backup System</a></b> [pdf] User Guide T0, AUT0, SmartGuard-63A Single Phase Backup System, SmartGuard-63A, Single Phase Backup System, Phase Backup System, Backup System, System</p>
--	---

## References

- [Huawei Digital Power--for a better, greener future](#)
- [User Manual](#)

### Manuals+, Privacy Policy

This website is an independent publication and is neither affiliated with nor endorsed by any of the trademark owners. The "Bluetooth®" word mark and logos are registered trademarks owned by Bluetooth SIG, Inc. The "Wi-Fi®" word mark and logos are registered trademarks owned by the Wi-Fi Alliance. Any use of these marks on this website does not imply any affiliation with or endorsement.