

Huali
Huali MLV 4443
Bar Cart



Huali MLV 4443 Bar Cart Installation Guide

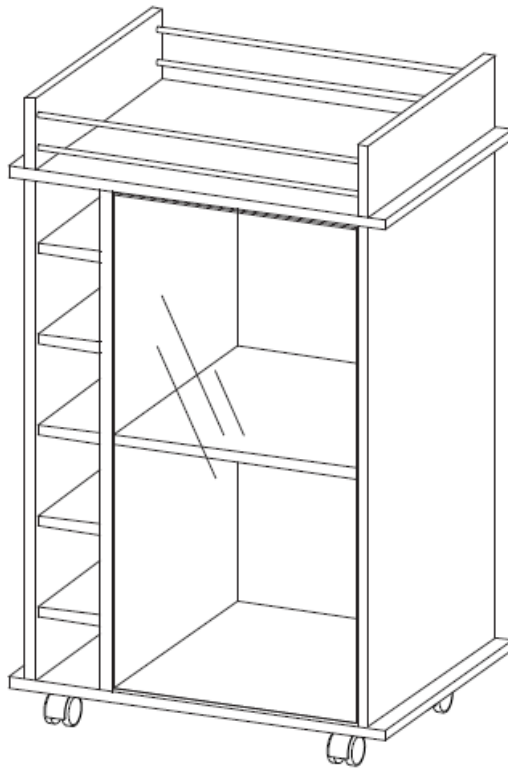
[Home](#) » [Huali](#) » Huali MLV 4443 Bar Cart Installation Guide 

Contents

- [1 Huali MLV 4443 Bar Cart](#)
- [2 ASSEMBLY HARDWARE](#)
- [3 ASSEMBLY PARTS](#)
- [4 MAX SUGGESTED LOADS](#)
- [5 ASSEMBLY STEPS](#)
- [6 DOOR GLASS](#)
- [INSTALLATION](#)
- [7 WARRANTY POLICY](#)
- [8 Documents / Resources](#)
 - [8.1 References](#)
- [9 Related Posts](#)

Huali

Huali MLV 4443 Bar Cart



Assembly Instructions

Bar Cart / Mueble Bar

Dimensions:

- Height: 35.04 in / 89 cm
- Width: 21.65 in / 55 cm
- Depth: 16.34 in / 41.5 cm

Important Recommendations

- Do not paint the cabinet.
- The cabinet must be used exclusively indoors; do not expose to direct sun.
- Clean metallic hardware with a dry cloth.
- Do not overload the cabinet (see suggested loads).
- Do not hit or hammer the cabinet (unless indicated).
- Clean with a slightly damp cloth; use gentle soaps.
- Avoid direct contact with water, fire, or exposure to heat sources.

Warning

Never allow children to climb or manipulate the cabinet; furniture tip over can cause serious injuries or death.

Index

- Assembly Hardware
- Assembly Parts

- Suggested Loads
- Assembly Recommendations
- Assembly Steps
- Warranty

Required Tools

*Not included, and not shown actual size.

Assembly Hardware

Please check that the hardware content is correct. If any item is missing, please call our customer service line.

- 22x Minifix Cams
- 22x Spreading Bolt
- 68x Wood Dowel
- 22x Cover Caps
- 18x Sheet Screw
- 2x Wheel Casters
- 2x Wheel Caster with Brake
- 2x Glass Door Hinge
- 4x Chrome Plated Rod
- 1x Glass Door Handle
- 1x Magnetic Catch
- 1x Polished Glass

Assembly Parts

- A – x1
- B – x1
- C – x5
- D – x1
- E – x1
- F – x1
- G – x1
- H – x1
- I – x1
- J – x1
- K – x2

Suggested Loads

Maximum load capacity:

- 33 lb / 15 kg
- 22 kg
- 10 kg

Assembly Recommendations

- Two people are recommended to assemble the product.
- Assemble the cabinet on a flat, smooth surface, preferably on a carpeted floor or the carton box of the product.
- Carefully read the assembly instructions and identify every wood and hardware part before starting assembly.

Assembly Steps

1. Attach wheel casters and brakes.
2. Insert spreading bolts.
3. Insert wood dowels.
4. Attach minifix cams.
5. Assemble panels and secure with bolts.
6. Attach magnetic catch and handle.
7. Install glass door hinges.
8. Secure all parts and cover cams with caps.

Warranty Policy

Details about the warranty policy will be provided here.

FAQ

- **What tools are required for assembly?**
 - A screwdriver and a hammer are needed, but they are not included.
- **Can the cabinet be used outdoors?**
 - No, it is designed for indoor use only.
- **What should I do if parts are missing?**
 - Contact customer service for assistance.

ASSEMBLY INSTRUCTIONS

- **Height:** 35,04 in
- **Width:** 21,65 in
- **Depth:** 16,34in

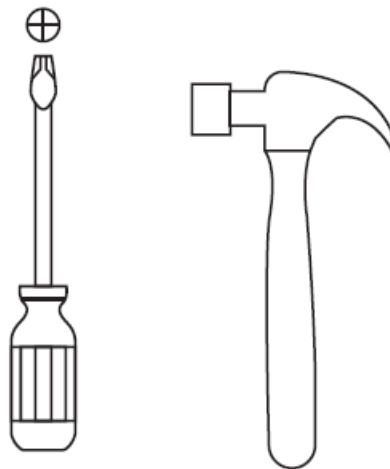
IMPORTANT RECOMMENDATIONS

- Do not paint the cabinet.
- The cabinet **MUST** be used exclusively indoors, do not expose to direct sun.
- Clean metallic hardware with a dry cloth.
- Do **NOT** overload the cabinet (see suggested loads).
- Do not hit or hammer the cabinet (just when indicated).
- Clean with a slightly damp cloth, use gentle soaps.
- Do not drag, lift and move between two people.
- Avoid direct contact with water, fire or exposure to heat sources.

WARNING

Never allow children to climb or manipulate the cabinet, furniture tip over can cause serious injuries or death.

REQUIRED TOOLS



Not included, and not shown actual size.

ASSEMBLY HARDWARE

Please check that the hardware content is correct. If any item is missing, please call to our customer service line.



x22

Minifix Cams



x22

Spreading Bolt



x68

Wood Dowel



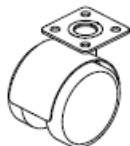
x22

Cover Caps



x18

Sheet Screw



x2

Wheel Casters



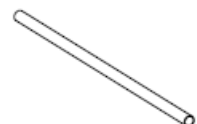
x2

Wheel Caster with Brake



x2

Glass Door Hinge



x4

Chrome Plated Rod



x1

Glass Door Handle



x1

Magnetic Catch

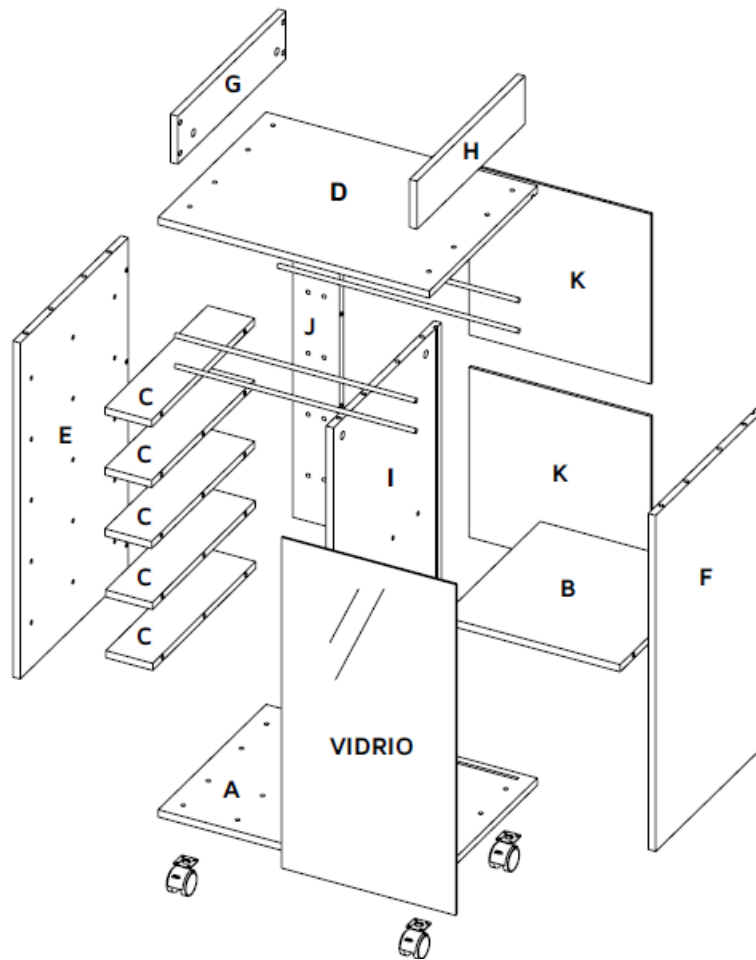


x1

Polished Glass

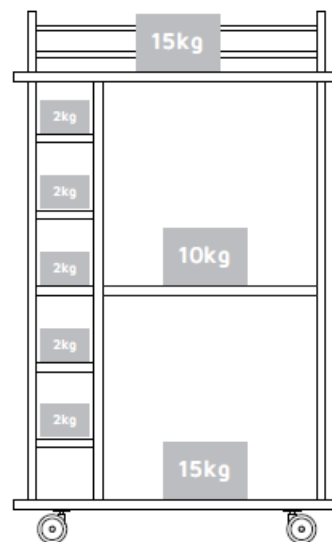
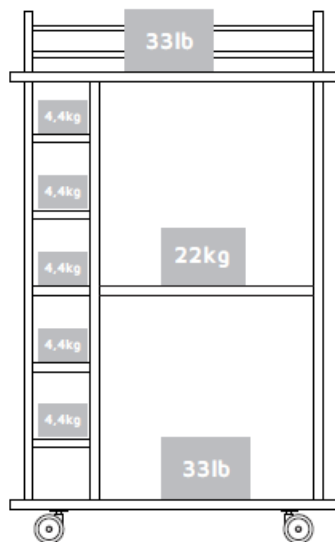
Hardware items are NOT shown actual size.

ASSEMBLY PARTS



- A – x1
- B – x1
- C – x5
- D – x1
- E – x1
- F – x1
- G – x1
- H – x1
- I – x1
- J – x1
- K – x2

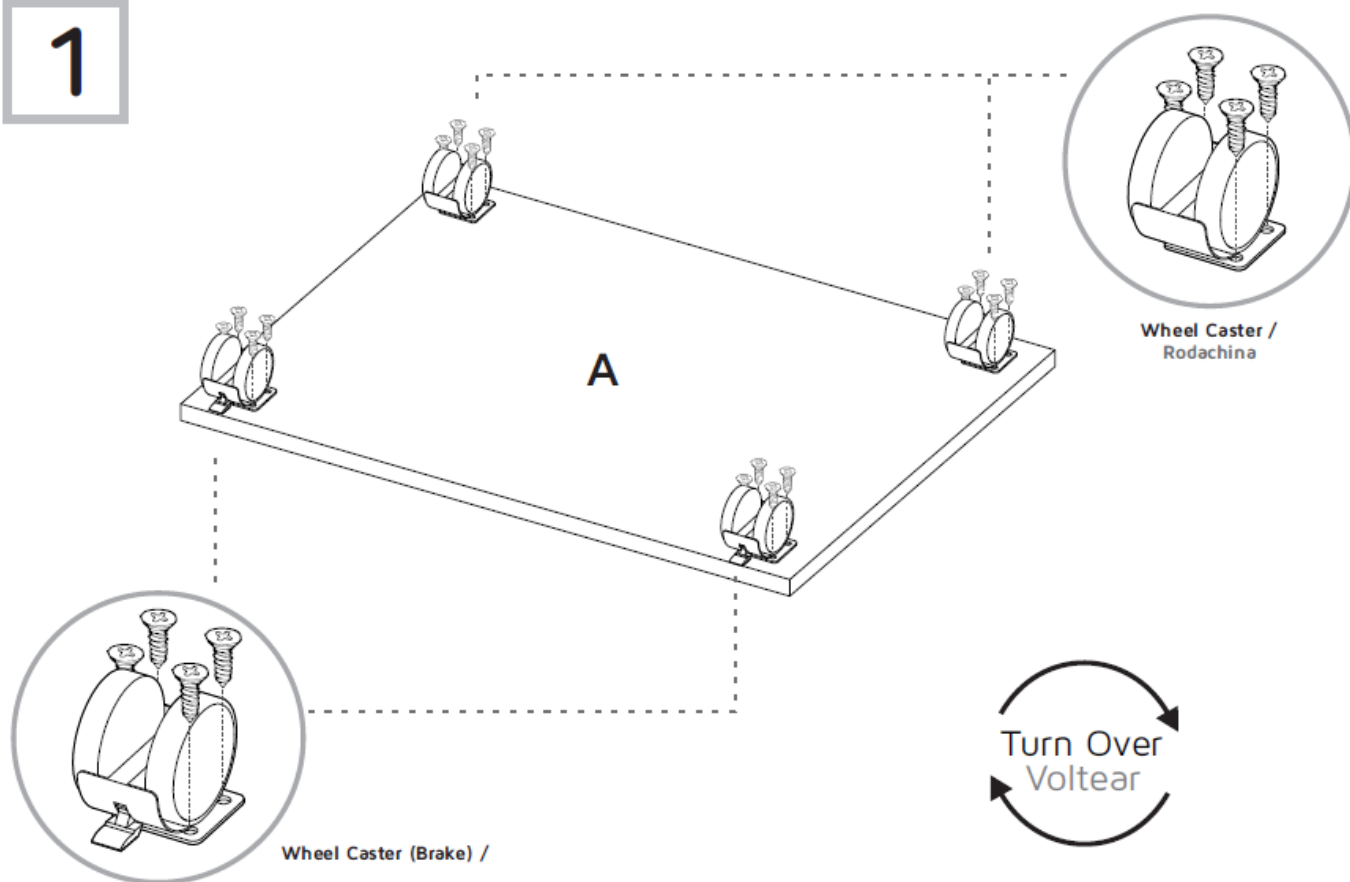
MAX SUGGESTED LOADS



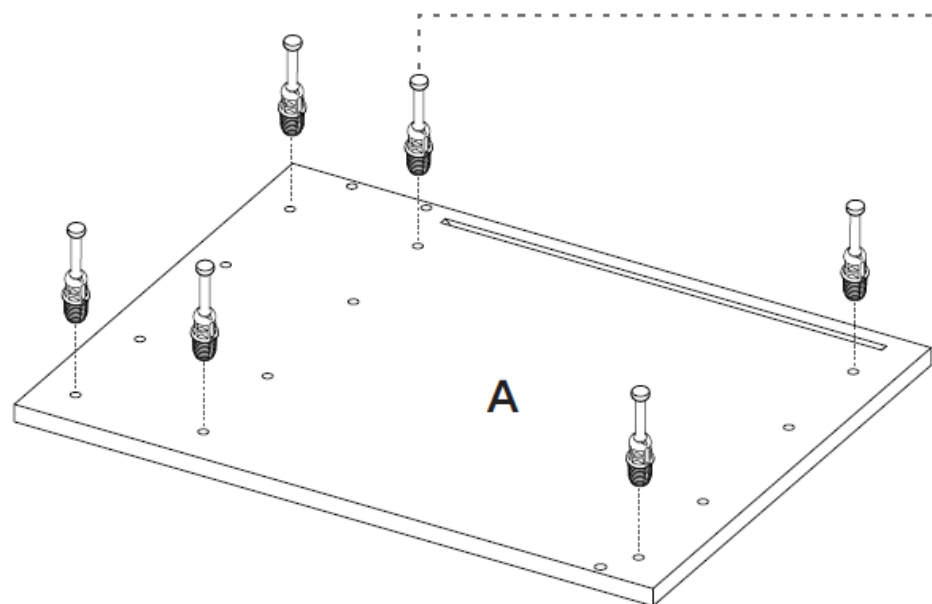
ASSEMBLY RECOMMENDATIONS

- Two people are recommended to assemble the product.
- Assemble the cabinet on a flat, smooth surface, preferably on a carpeted floor or the carton box of the product.
- Carefully read the assembly instructions and identify every wood and hardware part before start assembling the cabinet.

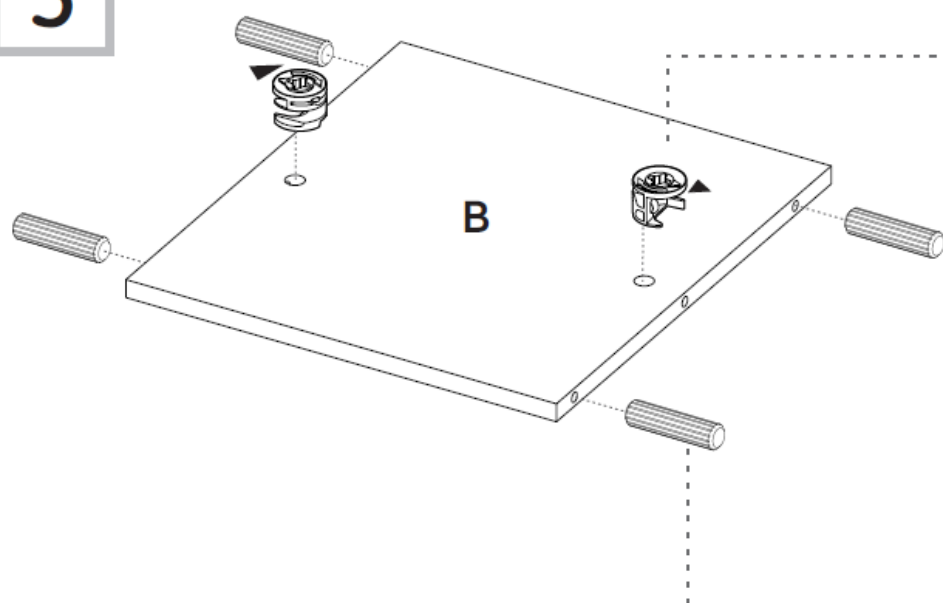
1



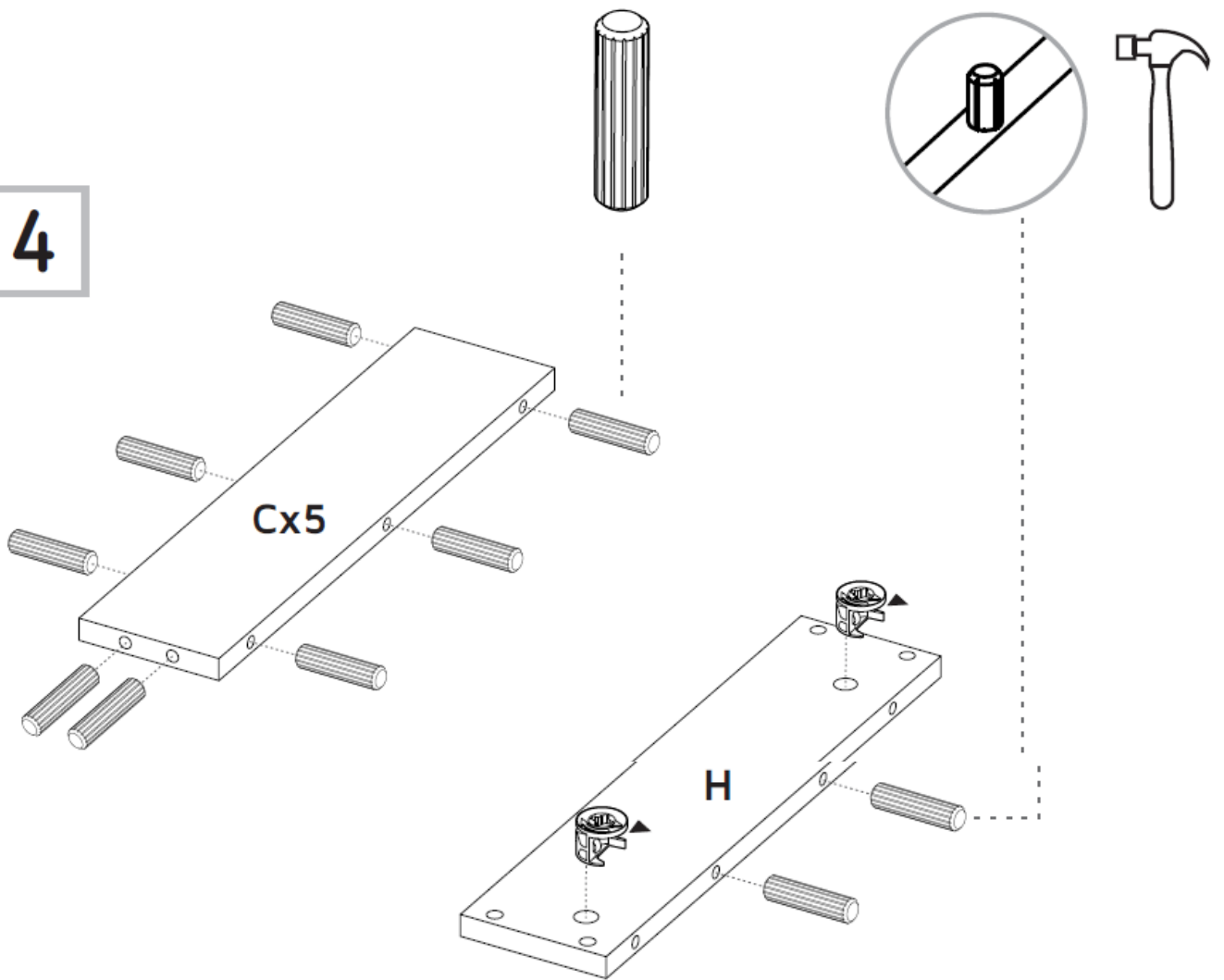
2



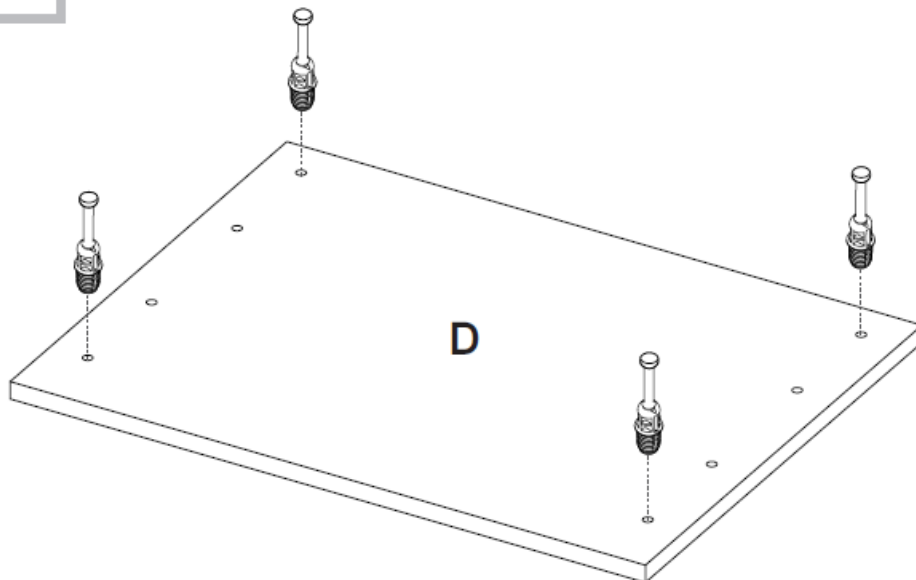
3

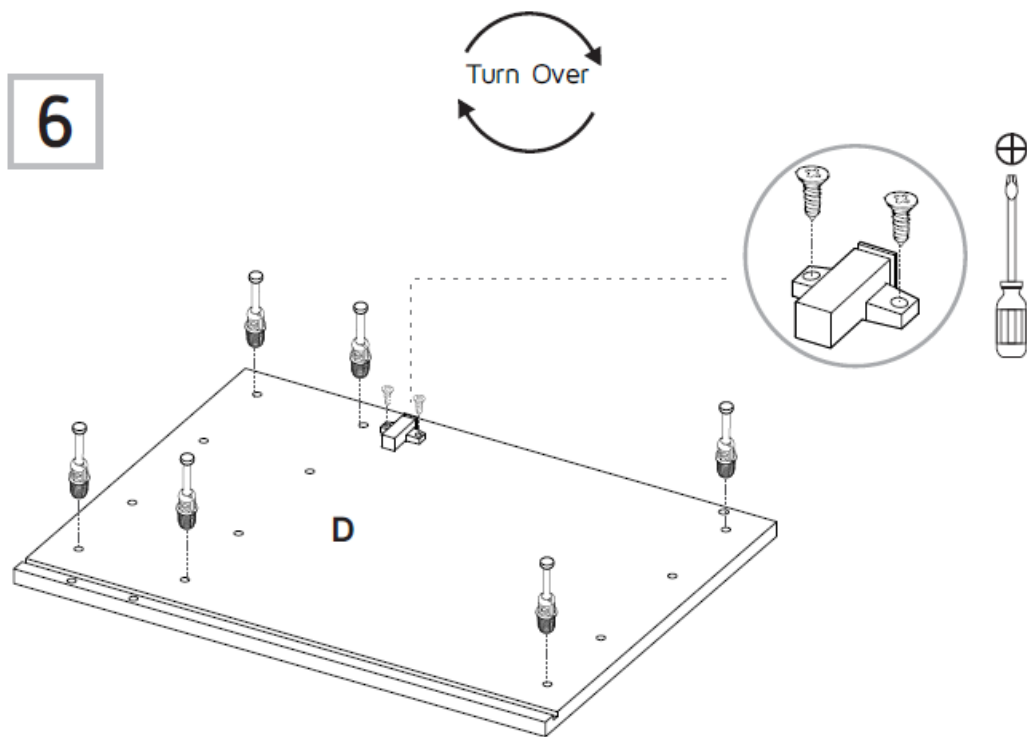


4

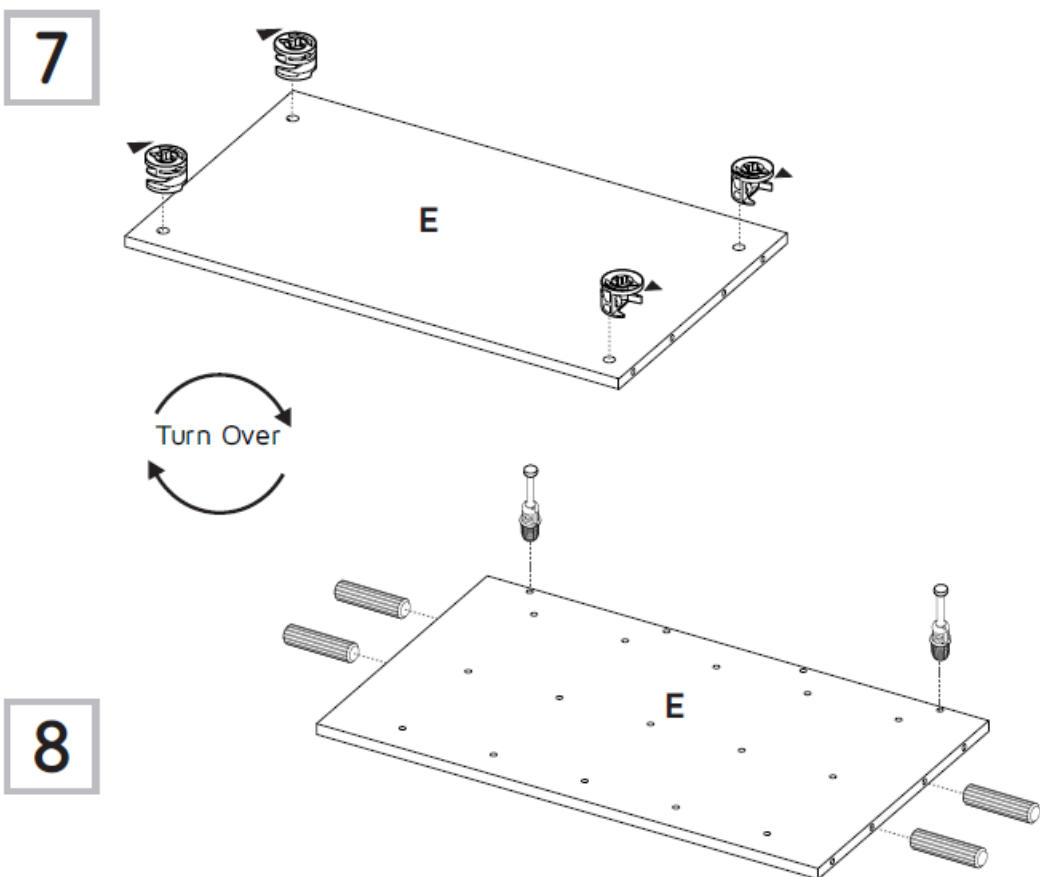


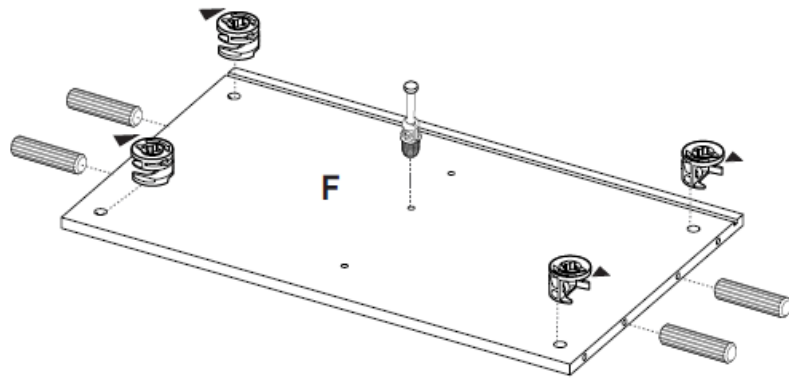
5



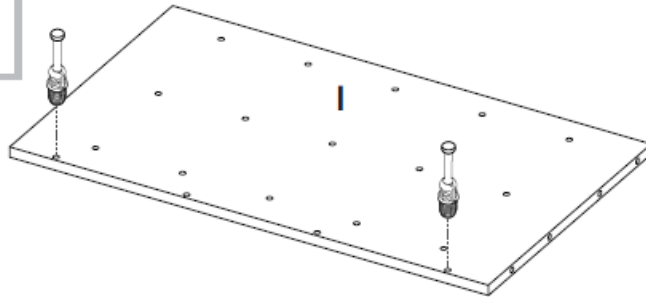


ASSEMBLY STEPS

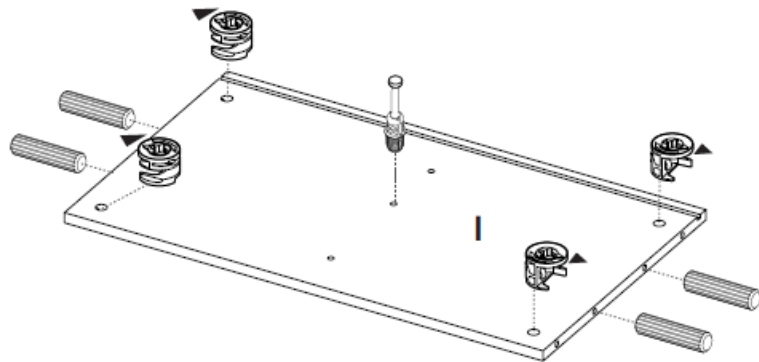




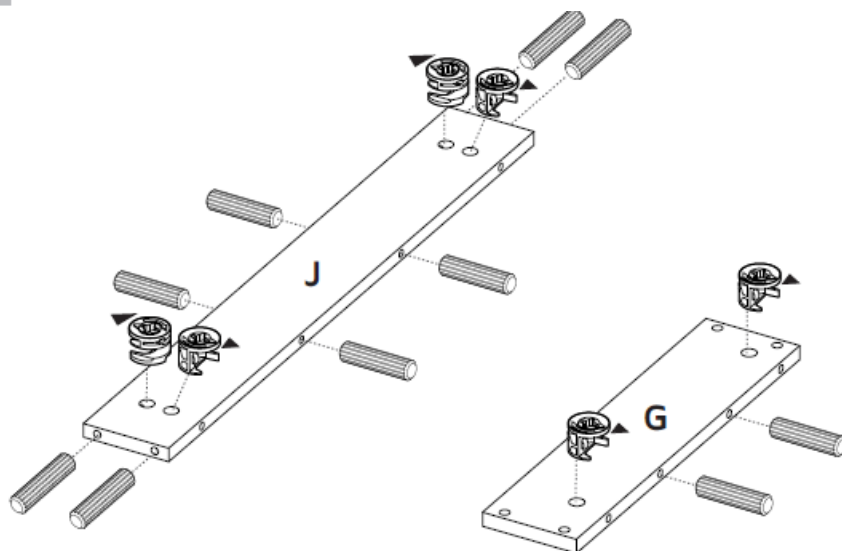
9



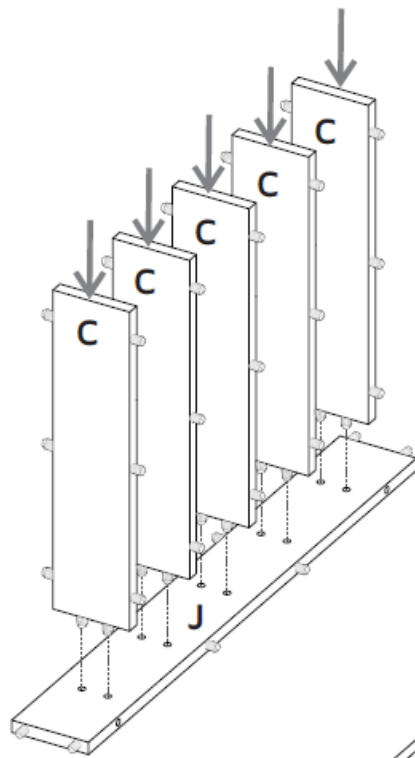
Turn Over



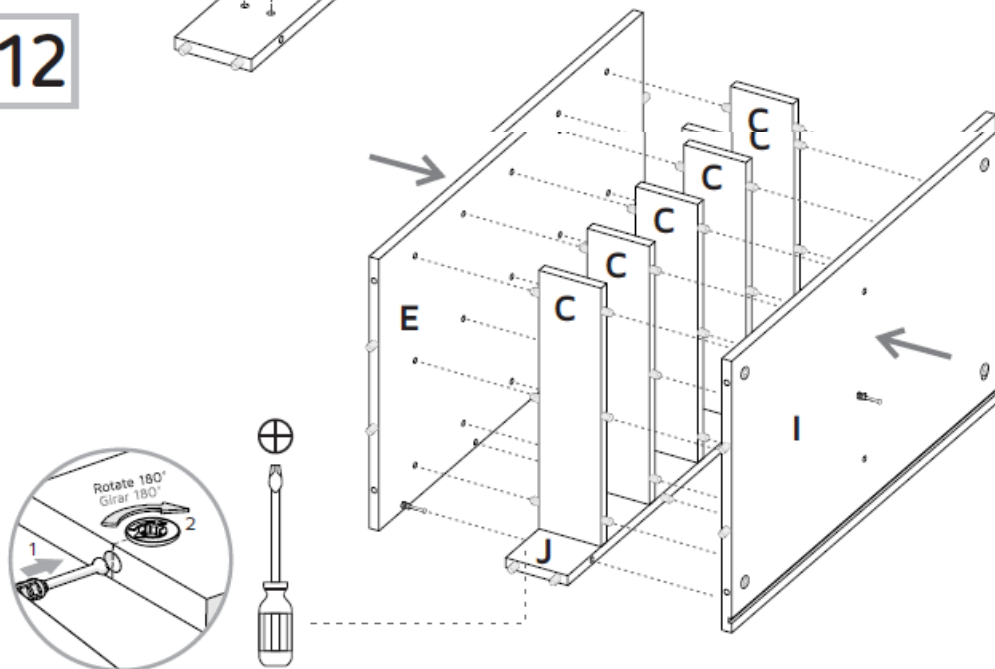
10



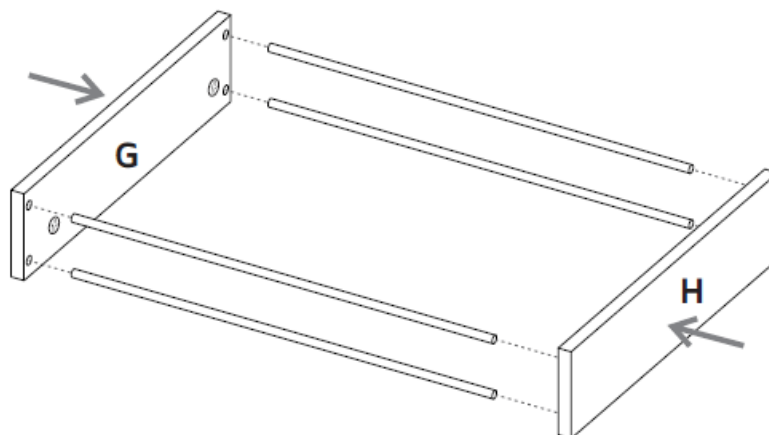
11



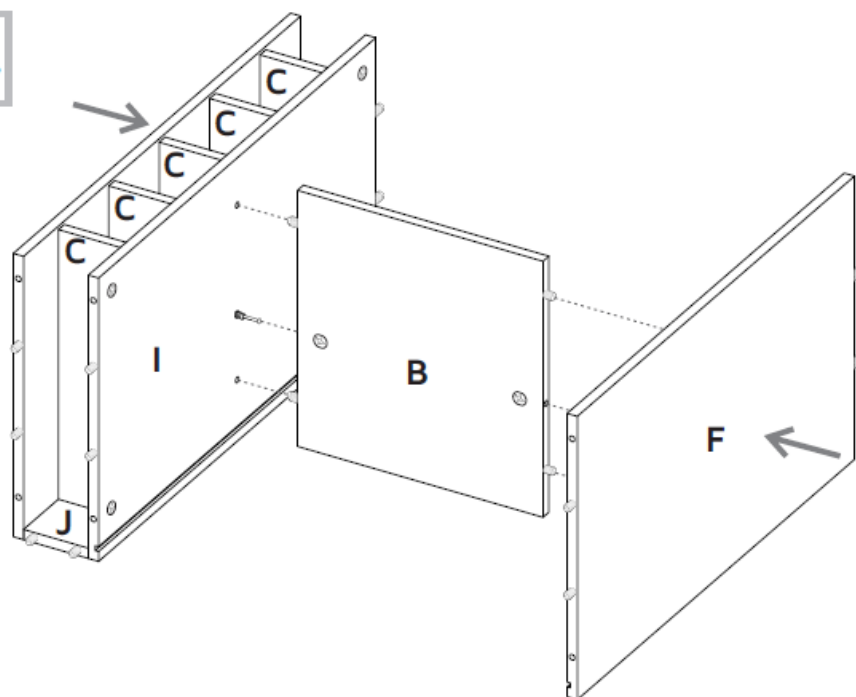
12



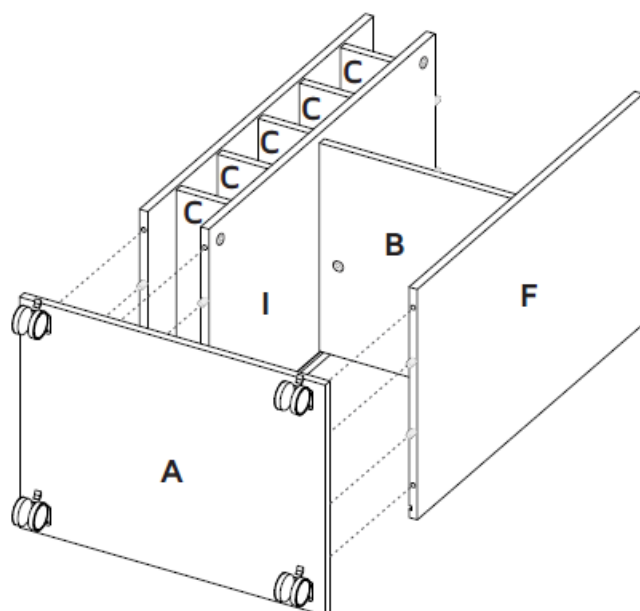
13



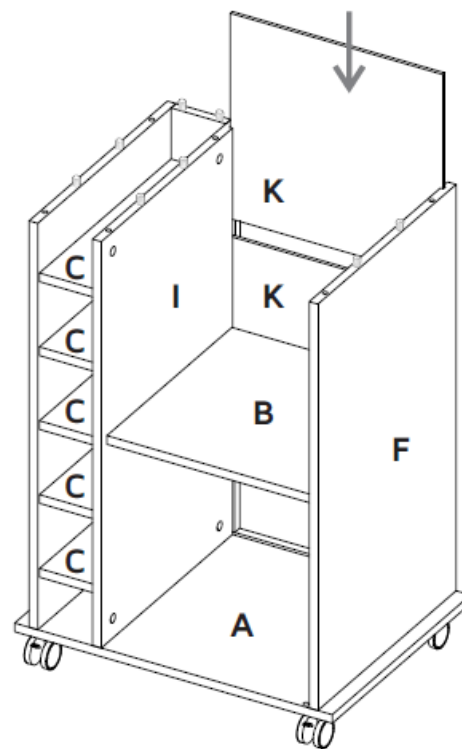
14



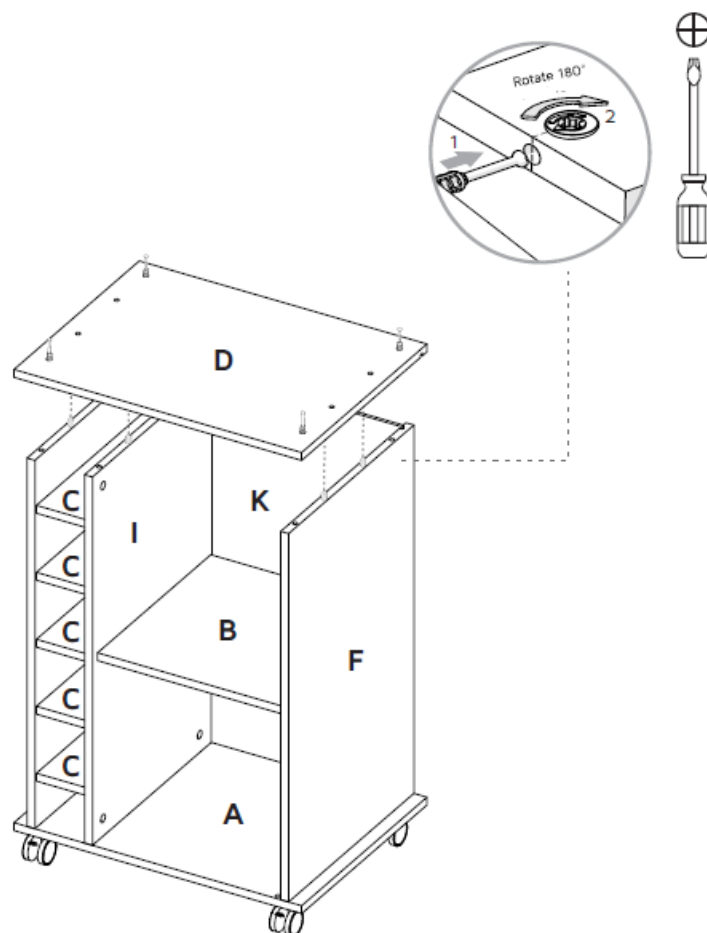
15



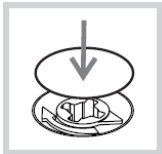
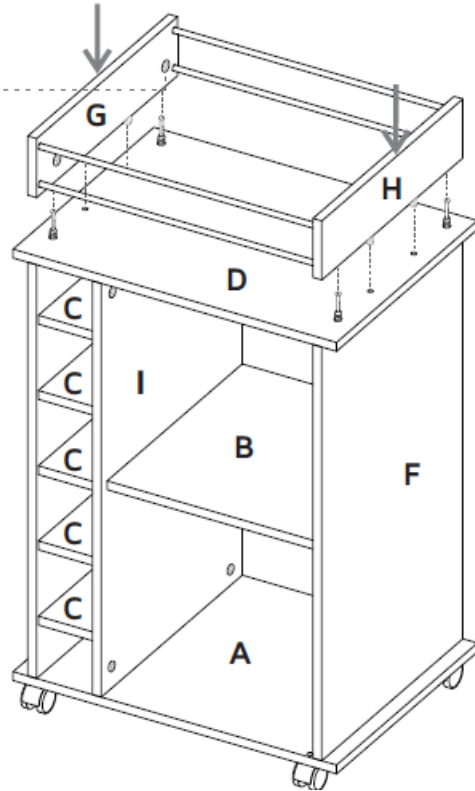
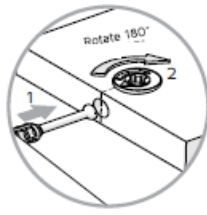
16



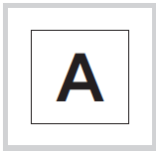
17



18

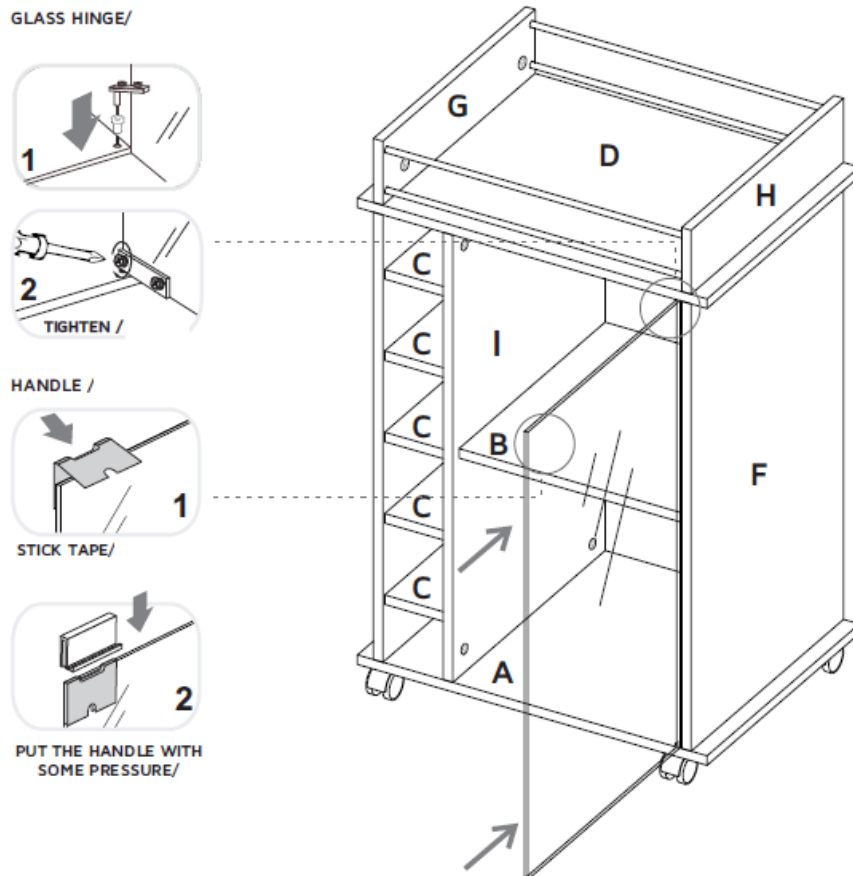


After you finish the adjustment of the cams, cover them with the cover caps.



After you finish assembling the cabinet, take off the adhesive letters.

DOOR GLASS INSTALLATION



WARRANTY POLICY

- Furniture has a 1 year warranty coverage in wooden parts and 1 year warranty coverage in hardware pieces since its manufacturing date, which you can see in the lot number printed on the product box and the assembly instructions leaflet.
- Warranty covers materials and workmanship imperfections which impair the assembly or correct functioning of the cabinet.
- This warranty is not valid if the defects or imperfections are caused by the incorrect following of the assembly instructions, warnings and recommendations, misuse, intentional damage, fire or flood, or after modifications or any kind of alteration, or repaired by someone not authorized, when it's been assembled 3 months after the date of purchase. These defects MUST be reported before the warranty coverage period ends. Once the product has been assembled, the company will not be responsible for defective and/or damaged parts.
- This warranty is ONLY valid for the ORIGINAL PURCHASER, it doesn't apply if the product has been resold, rented, etc.
- Furniture will take no liability for incidental or consequential damages caused to or by the product (This may not apply in your state).
- To make this warranty valid you must write to our customer service email describing the product defect, lot number and submitting your sales receipt or proof of purchase, or contact us at our customer service line. Replaced parts will be under the product's original warranty coverage period. Damaged parts will become property of the company.
- There are no other warranties applicable to this product.

Documents / Resources

<div><div><div>ASSEMBLY INSTRUCTIONS</div><div>INSTRUCCIONES DE ENSAMBLAR</div><div></div><div><div>ITEM NO. 101-101-101</div><div>ITEM NO. 101-101-101</div><div>ITEM NO. 101-101-101</div><div>ITEM NO. 101-101-101</div></div><div><div>ITEM NO. 101-101-101</div><div>ITEM NO. 101-101-101</div><div>ITEM NO. 101-101-101</div><div>ITEM NO. 101-101-101</div></div></div><div><div>BAR CART</div><div>Mobile Bar</div></div></div> <td><div><div>Huali MLV 4443 Bar Cart [pdf] Installation Guide</div><div>MLV 4443, MLV 5205, BLZ 5231, MLV 4443 Bar Cart, MLV 4443, Bar Cart, Cart</div></div></td>	<div><div>Huali MLV 4443 Bar Cart [pdf] Installation Guide</div><div>MLV 4443, MLV 5205, BLZ 5231, MLV 4443 Bar Cart, MLV 4443, Bar Cart, Cart</div></div>
--	--

References

- [User Manual](#)

[Manuals+](#), [Privacy Policy](#)

This website is an independent publication and is neither affiliated with nor endorsed by any of the trademark owners. The "Bluetooth®" word mark and logos are registered trademarks owned by Bluetooth SIG, Inc. The "Wi-Fi®" word mark and logos are registered trademarks owned by the Wi-Fi Alliance. Any use of these marks on this website does not imply any affiliation with or endorsement.