

HTV  ONT  
HPS02 Heat  
Press



## HTVRONT HPS02 Heat Press User Manual

[Home](#) » [HTVRONT](#) » HTVRONT HPS02 Heat Press User Manual 

### Contents

- 1 HTVRONT HPS02 Heat Press
- 2 INCLUDE IN THE BOX
- 3 Machine Overview
- 4 Details of Buttons
- 5 Functions
- 6 Specifications
- 7 FAQs
- 8 Documents / Resources
  - 8.1 References
- 9 Related Posts

HTV  ONT

**HTVRONT HPS02 Heat Press**

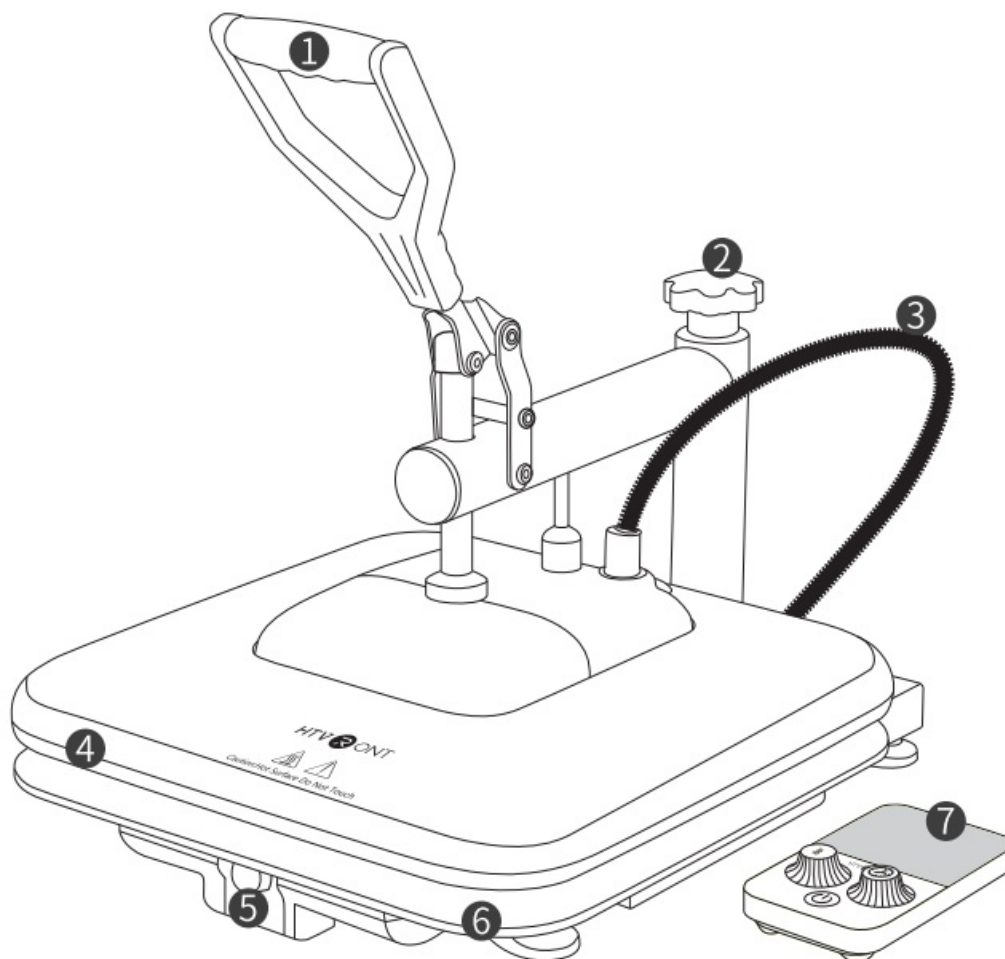
**INCLUDE IN THE BOX**



Thank you for purchasing the H1VRONT Manual Heat Press. Before using this product for the first time, please read this product manual carefully and keep it for future reference.

- Manual Heat Press X 1
- Control Pad x 1
- Heat Insulation Pad X 1
- UserManualXI

## **Machine Overview**



1. Handle
2. Heat Plate
3. Pressure Regulator
4. Metal Base
5. Wire Protective Tube
6. Control Pad
7. Ironing Board

## Details of Buttons



### Power:

1. Turn On: After powering on, press the “Power” button once to turn on the machine;
2. Turn Off: Long press the “Power” button to turn off the machine.



### Temp:

1. Adjust: After turning on, rotate the “Temp” button to adjust the temperature by  $\pm$  S°C (S°F);
2. Confirm: After setting up the appropriate temperature, press the “Temp” button once or wait for 3 s to confirm

the temperature;

3. Covert Units: Long press for 2 s the “Temp” button to convert the temp unit (‘C/’F).



#### Time:

1. Adjust: After finishing the temp setting, rotate the “Time” button to adjust the time by  $\pm 5$  s;
2. Confirm/Exit: After setting up the appropriate time, press the “Time” button once or wait for 3 s to exit the time setting;
3. Countdown: Long press for 2 s the “Time” button to start the countdown.

## Functions



### Memory mode

The set temp and time will be remembered for the next operation.



### Auto turn-off

This machine will turn off automatically if there's no operation in 15 minutes. There will be beeps in the last 10 s before the shutdown.

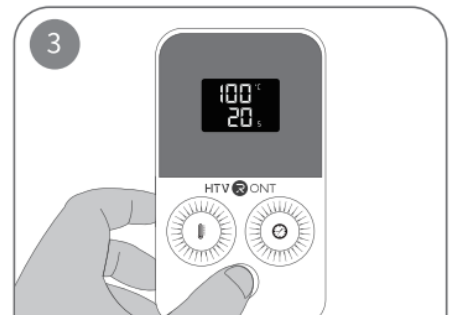
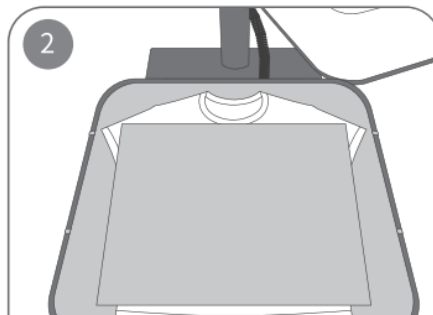
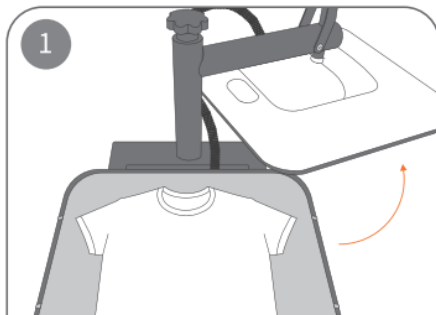


### Back to the default setting (100°C/210°F, 20 s)

Press the "Power" button for 3 s in the turn-off status to turn on the machine and reset the settings.

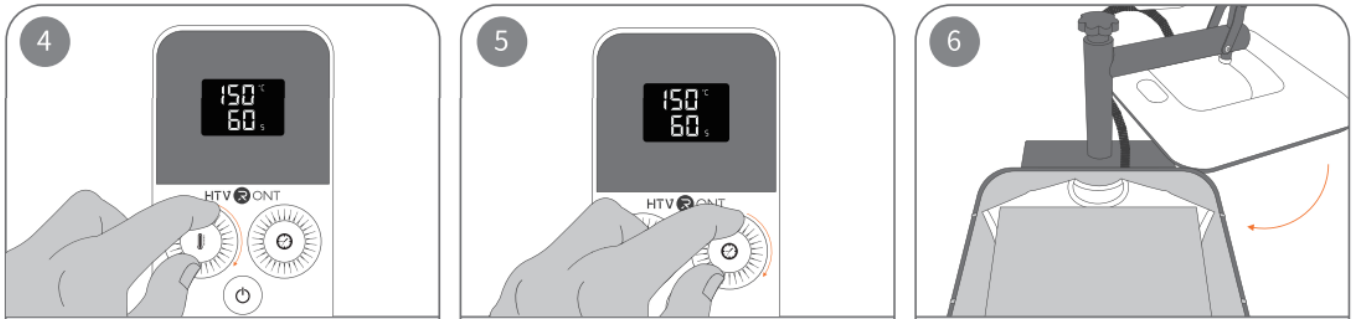
## Usage Notes

1. . Please ensure a clear half-meter radius space near the product before operation;
2. Do not rotate the heat plate 360 degrees to tangle the wire protective tube;
3. Please turn off the power after use or before cleaning to avoid electric leaks and any risks;
4. If the product malfunctions or the power cord is damaged, please stop using the product immediately and contact HTVRONT customer service.

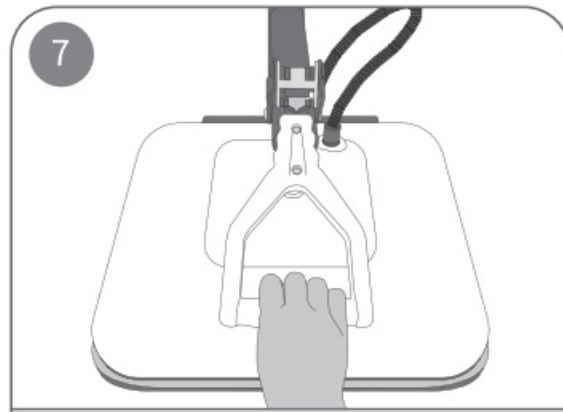


- Power on the machine and rotate the heat plate away to place the substrate and material on the ironing board in order.
- Fix the material with the heat-resistant tape and cover the design with the Teflon sheet.

- Press the “Power” button once to turn it on (Default setting: 100°C/210°F, 20 s).



- Rotate the “Temp” button to adjust the temperature and press the “Temp” button once or wait for 3 s to heat up.
- Rotate the “Time” button to adjust the time and press the “Time” button once or wait for 3 s to exit the setting.
- Rotate the heat plate back and adjust the appropriate pressure by rotating the pressure regulator.



- Once the control pad beeps 3 times, pull down the handle and press the “Time” button for 2 s to start the countdown and iron.

#### Quick Reference Chart

Materials	Textile	Temp	Time	Note
HeatTransferVinyl	100% Cotton, Polyester-cotton, Polyester, Modal, Canvas, etc.	145°C/290°F	15 s	Cold Peel
Glitter Heat Transfer Vinyl	100% Cotton, Polyester-cotton, Polyester, Modal, Canvas, etc.	150°C/300°F	15 s	Cold Peel
Holographic Heat Transfer Vinyl	100% Cotton, Polyester-cotton, Polyester, Modal, Canvas, etc.	150°C/300°F	15 s	Cold Peel
Chameleon Heat Transfer Vinyl	100% Cotton, Polyester-cotton, Polyester, Modal, Canvas, etc.	145°C/290°F	15 s	Cold Peel
Soft Metallic HeatTransferVinyl	100% Cotton, Polyester-cotton, Polyester, Modal, Canvas, etc.	145°C/290°F	10 s	Cold Peel
Glow-in-the-dark HeatTransferVinyl	100%Cotton, Polyester-cotton, Polyester, Modal, Canvas, etc.	145°C/290°F	15 s	Cold Peel
Reflective Heat Transfer Vinyl	100% Cotton, Polyester-cotton, Polyester, Modal, Canvas, etc.	150°C/300°F	15 s	Cold Peel
Flocked Heat Transfer Vinyl	100% Cotton, Polyester-cotton, Polyester, Modal, Canvas, etc.	150°C/300°F	15 s	Cold Peel
Puff Heat Transfer Vinyl	100% Cotton, Polyester-cotton, Polyester, Modal, Canvas, etc.	155°C/310°F	15 s	Hot Peel
Pattern HeatTransferVinyl	100% Cotton, Polyester-cotton, Polyester, Modal, Canvas, etc.	145°C/290°F	15 s	Cold Peel
DTFTTransfer Film	100%Cotton, Polyester-cotton, Polyester, Modal, Canvas, etc.	150°C/300°F	15 s	Cold Peel
Heat Transfer Paper (Dark)	100% Cotton, Polyester-cotton, Polyester, Modal, Canvas, etc.	160°C/320°F	20s	Cold Peel
Heat Transfer Paper (Light)	100% Cotton, Polyester-cotton, Polyester, Modal, Canvas, etc.	160°C/320°F	20s	Cold Peel
Sublimation Paper	; 30% Cotton, Polyester, Modal, Canvas, etc	200°C/390°F	40s	Hot Peel

1. Do not use this product outdoors. It's only for household use;
2. This product has to work on a stable, flat, and heat-resistant surface;
3. Keep the product away from flammables while in use; When using this product, please keep an eye on it to avoid incidents of the product and unplug the power cord while leaving;
4. Do not touch the heat plate after powering it on to prevent burns;
5. Do not let the power cord and the USB cable touch the heat plate during the operation;
6. After use, please wait until the machine is completely cool before storing it away;
7. Please unplug power cord after use or before cleaning the product;
8. Do not immerse the product in any liquid;
9. When there beeps and "E1" or "E2" on the screen, please cut the power immediately and restart. Feel free to contact us if you have more questions;
10. If the product is malfunctioning or damaged, please stop using the product immediately and contact HTVRONT customer service;
11. Children under 14 must have adult supervision while using the machine.

## Specifications

<b>Product Name</b>	Manual Heat Press	<b>Model</b>	HPS02
<b>Input</b>	120V – 60 Hz 1500 W; 220 – 240V – 50 – 60 Hz 1500 W		
<b>Temp</b>	40 – 210°C (104 – 410°F)	<b>Time</b>	1- 999 s
<b>Heat Plate Size</b>	38.1 x 38.1 cm/15 x 15 in		
<b>Product Size</b>	49.2 x 40.0 x 31.0 cm (19.4 X 15.7 X 12.2 in)	<b>Package Size</b>	55.5X46.0X38.0 cm (21.9X18.1X14.9 in)
<b>Machine Weight</b>	15.5 kg/34.2 lb	<b>Package Weight</b>	17.6 kg/38.8 lb

## HTVRONT Manual Heat Press Limited Warranty

The warranty period of this machine is one year from the date of purchase. Other HTVRONT accessories are guaranteed for free within three months from the date of purchase. Warranty service is available when there's a malfunction in normal use during the warranty period. If consumers need warranty service, they need to provide proof of purchase. To the extent permitted by applicable laws, HTVRONT is not responsible for the warranty in the following situations: malfunctions caused by improper use, maintenance, and storage by consumers; malfunctions caused by self-repair or dismantling by those who do not undertake the three-guarantee repair without the permission of our company; products that can continue to be used after repair when the warranty expired; damage caused by force majeure. Meanwhile, HTVRONT disclaims all implied and legal warranties, including warranties of merchantability and fitness for a particular purpose. The warranties that are allowed to be denied are for the duration of this warranty. Proof of purchase may be required to verify warranty eligibility.

## FAQs

How to adjust ironing pressure?

Adjust the height of the heat plate by screwing the pressure regulator. (Optimal height: 1-3 mm)

How to start the countdown?

After pulling down the handle, press the Time button for 2 s to start the countdown. The countdown does not pause when lifting the handle during the operation

Why does the control pad not respond?

Ensure the control pad is powered on

Why does the machine beep constantly with the E1 or E2 on the screen?

Beep Once: the machine is powered, turned on/off, or finishes time/temp setting


How to convert temperature units?

Press for 2 s the Temp button to convert the temp unit (° C/°F).

Why are the USB and data cables non-detachable?

For your safety, the USB and data cables are not detachable because it is a high-power machine.

## Documents / Resources

	<a href="#">HTVRONT HPS02 Heat Press</a> [pdf] User Manual HPS02 Heat Press, HPS02, Heat Press, Press
---	--

## References

- [User Manual](#)



## **Manuals+. Privacy Policy**

This website is an independent publication and is neither affiliated with nor endorsed by any of the trademark owners. The "Bluetooth®" word mark and logos are registered trademarks owned by Bluetooth SIG, Inc. The "Wi-Fi®" word mark and logos are registered trademarks owned by the Wi-Fi Alliance. Any use of these marks on this website does not imply any affiliation with or endorsement.