



HPRT S2 Portable Thermal Label Printer User Guide

[Home](#) » [HPRT](#) » HPRT S2 Portable Thermal Label Printer User Guide 

Contents

- [1 HPRT S2 Portable Thermal Label Printer](#)
- [2 Packing List](#)
- [3 Using Guide](#)
- [4 LED Indicator Definitions](#)
- [5 Description](#)
- [6 APP Setting](#)
- [7 Safety Precautions](#)
- [8 FCC](#)
- [9 Frequently Asked Questions \(FAQ\)](#)
- [10 Documents / Resources](#)
 - [10.1 References](#)
- [11 Related Posts](#)



HPRT S2 Portable Thermal Label Printer



Product Specifications

- Model: S2
- Power Source: Battery
- Charging Method: DC adapter or USB port
- Connectivity: Bluetooth
- Print Type: Thermal Printing
- Print Head Safety: Overheating prevention

Packing List



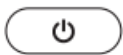
S2



Quick Start Guide

Note: The packing items are actually based on the order.

Using Guide



Power Button Status

- Hold down for 2 seconds to ON/OFF
- Lighting: Standby / Charging completed
- Slow flash: Charging
- Fast flash: Supplies near end, cover open, Firmware updating, low battery, the print head is overheated



Charging

- Use it for the first time after purchase
- Recommended to use after full charge

- Charge via DC adapter or computer USB porta

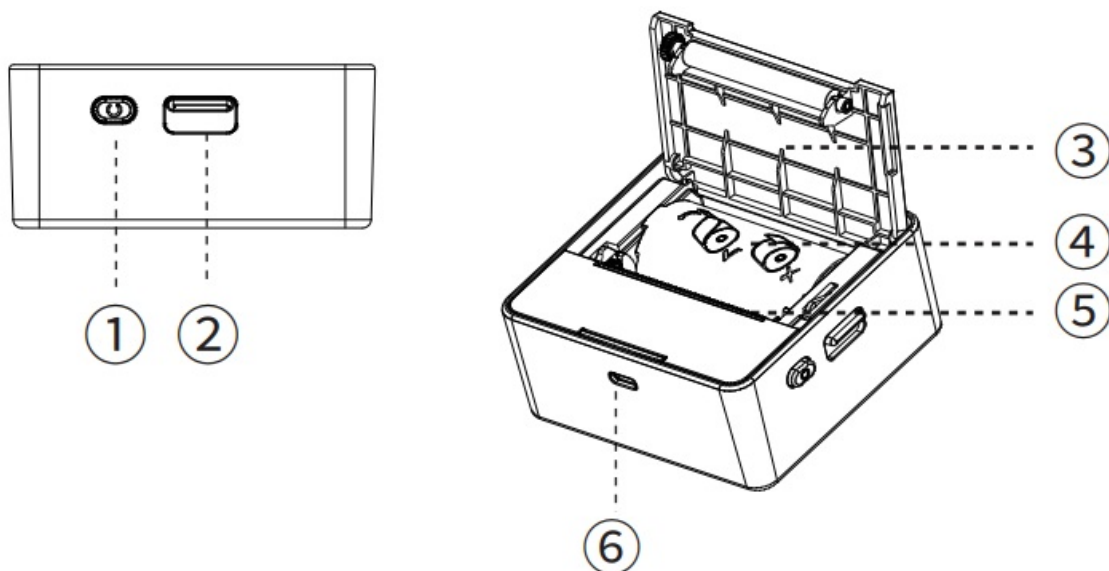
LED Indicator Definitions

In use

- Normal always on
- Exception flashes slowly
view tips in the APP.
- Charging process
- Charge normally flashes slowly
- Full of anomalies flashes quickly
- Battery charged always on

Description

1. Power Button
2. Cover Opening Button
3. Upper Cover
4. Paper Roll Sleeve
5. Paper Tearing Knife
6. USB Interface



Warning

The paper tearing knife has sharp edges and should not be touched.

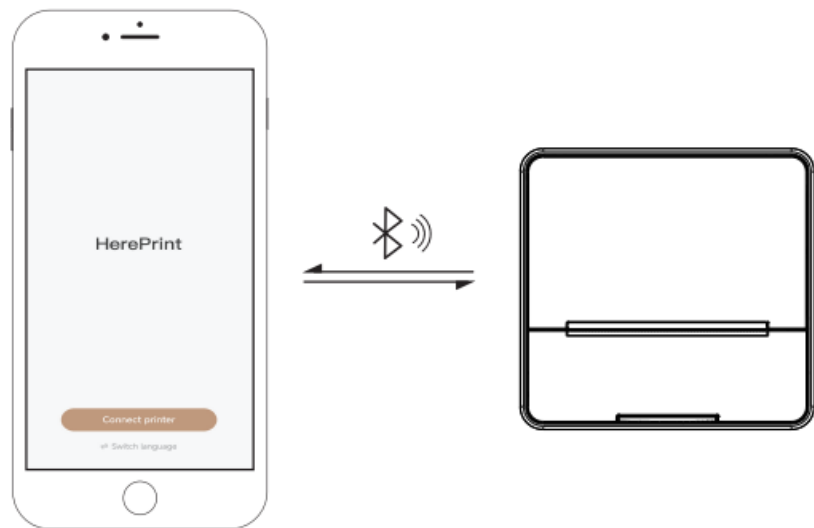
Download APP

Scan the QR code below and install the App.



Connect the device

Download Hereprint – APP, turn on Bluetooth on your phone, enter the APP, click Add Device, and connect by searching Bluetooth.



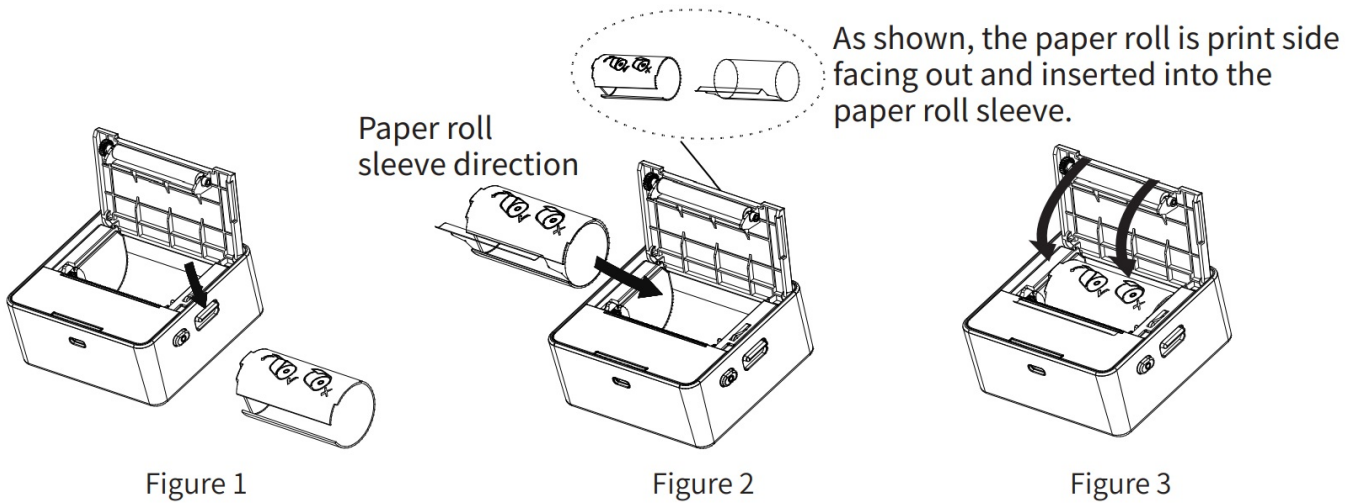
APP Setting

Simple Operation APP Setting

You can view information such as remaining power, firmware version in device management.



Replace Supplies



- With reference to figure 1, Pull the cover opening button down and open the top cover, remove the paper roll sleeve.
- When replacing supplies, place the supplies in reference to the direction shown in figure 2.
- Close the top cover after loading paper roll sleeve. Please make sure both sides click into place.
- When changing supplies, do not touch the print head in case of injury caused by overheating.

Safety Precautions



Battery Overheating

Battery Management and Precautions

When charging is completed, please unplug the USB cable.

To avoid fire, do not charge at high temperature (e.g. sweating rooms, bonfire nearby, etc.).



Charger Attention

Print Head Management and Precautions

There may be damage to the print head due to improper charging.

We recommend not to use printer in high humidity or dusty areas.



Burn Hazard

Print Head Overheating

After printing, do not touch the print head directly in case of injury caused by overheating.



Charging Port Damage

Charging Precautions

Please gently insert or unplug the USB cable to prevent excessive damage to the charging port.

FCC

This device complies with part 15 of the FCC Rules. Operation is subject to the following two conditions:

1. This device may not cause harmful interference, and
2. This device must accept any interference received, including interference that may cause undesired operation.

Warning: Any changes or modifications not expressly approved by the party responsible for compliance could void the user's authority to operate the equipment.

NOTE: This equipment has been tested and found to comply with the limits for a Class B digital device, pursuant to Part 15 of the FCC Rules. These limits are designed to provide reasonable protection against harmful interference in a residential installation. This equipment generates, uses and can radiate radio frequency energy and, if not installed and used in accordance with the instructions, may cause harmful interference to radio communications. However, there is no guarantee that interference will not occur in a particular installation. If this equipment does cause harmful interference to radio or television reception, which can be determined by turning the equipment off and on, the user is encouraged to try to correct the interference by one or more of the following measures:

- Reorient or relocate the receiving antenna.
- Increase the separation between the equipment and receiver.
- Connect the equipment into an outlet on a circuit different from that to which the receiver is connected.
- Consult the dealer or an experienced radio/TV technician for help.

FCC Radiation Exposure Statement

The device has been evaluated to meet general RF exposure requirement.
The device can be used in portable exposure condition without restriction.

Frequently Asked Questions (FAQ)

Q: Can I charge the device in high-temperature environments?

A: It is recommended not to charge the device in high-temperature conditions to avoid potential fire hazards.

Q: How do I connect the device to the app?

A: Turn on Bluetooth on your phone, open the app, click Add Device, and search for Bluetooth to connect.

Documents / Resources

	HPRT S2 Portable Thermal Label Printer [pdf] User Guide 2DT24AU, 2AUTE-2DT24AU, 2AUTE2DT24AU, S2 Portable Thermal Label Printer, S2, Portable Thermal Label Printer, Thermal Label Printer, Label Printer
---	--

References

- [User Manual](#)

Manuals+. Privacy Policy

This website is an independent publication and is neither affiliated with nor endorsed by any of the trademark owners. The "Bluetooth®" word mark and logos are registered trademarks owned by Bluetooth SIG, Inc. The "Wi-Fi®" word mark and logos are registered trademarks owned by the Wi-Fi Alliance. Any use of these marks on this website does not imply any affiliation with or endorsement.