



## Contents [ [hide](#) ]

- [1 hp M109,M112 Printer Software and Driver Downloads](#)
- [2 Product Specifications](#)
- [3 Product Usage Instructions](#)
- [4 Setup Guide](#)
- [5 FAQ](#)
- [6 Documents / Resources](#)
  - [6.1 References](#)



## hp M109,M112 Printer Software and Driver Downloads



## Product Specifications

- Product Name: HP LaserJet M109-M112 series
- Languages Available: Norsk, Dansk, Suomi, Polski, Hrvatski, Cesky

## Product Usage Instructions

### Cartridge Installation

- Remove the cartridge from the printer.
- Follow the language-specific instructions provided in the manual for cartridge removal.

### Printer Setup

- Connect the printer to a power source and turn it on.
- Adjust the paper guides in the input tray for Letter or A4 size paper.

### HP App Installation

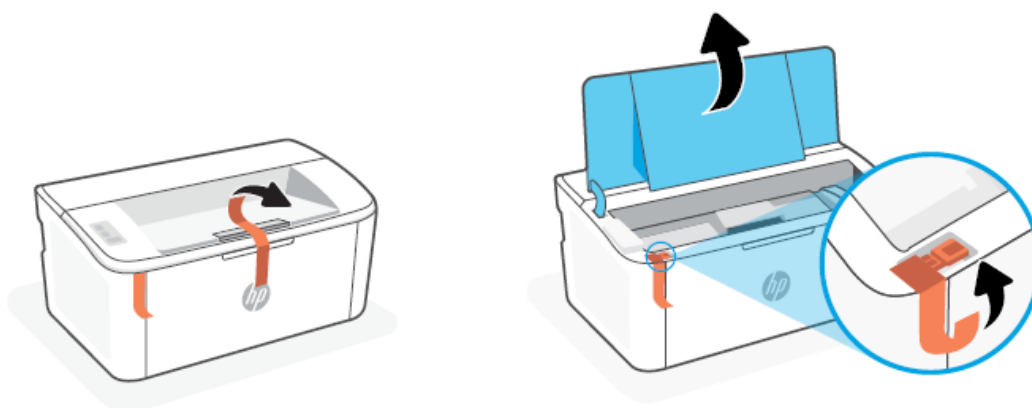
- Install the required HP app from [hp.com/start/install](https://hp.com/start/install) or your app store on a computer or mobile device.

### Network Connection

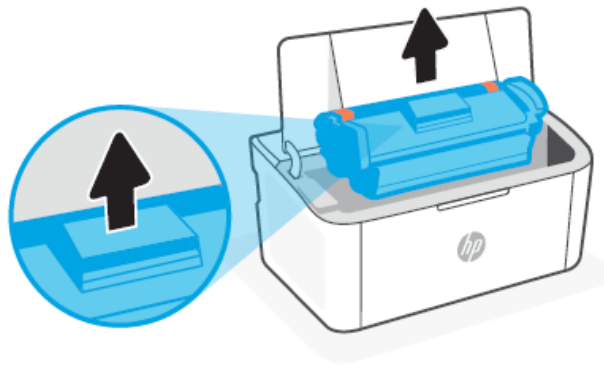
- Follow the instructions in the HP app to connect the printer to a network and complete the setup.
- Refer to the Reference Guide for Wi-Fi troubleshooting and tips.

### Setup Guide

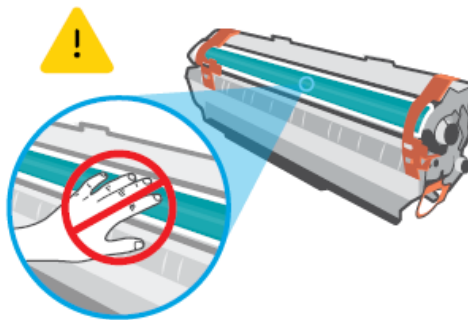
- Remove all tapes.



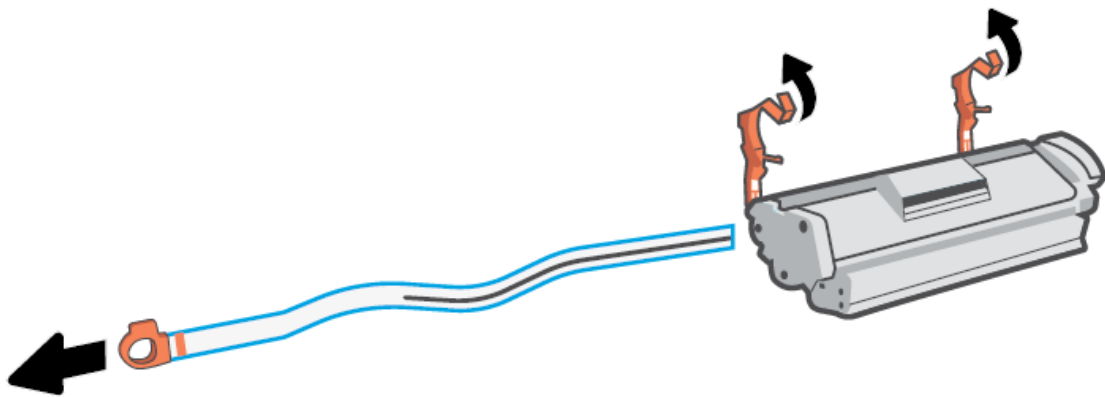
- Remove the cartridge from the printer.



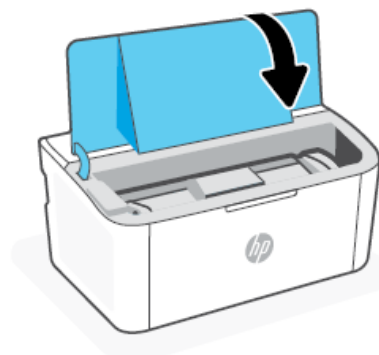
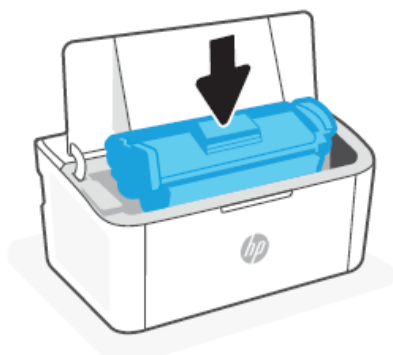
- Do not touch the roller surface.



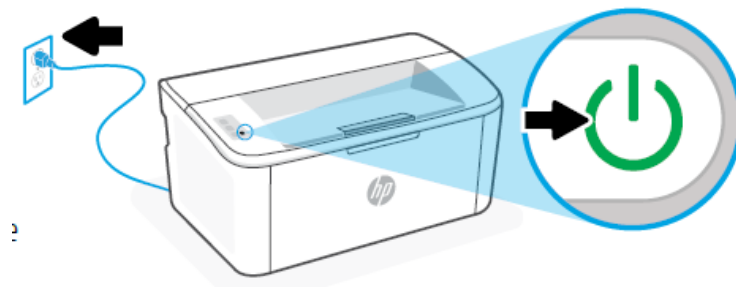
- Remove the orange guides, tape, and pull the tab to remove the protective film.



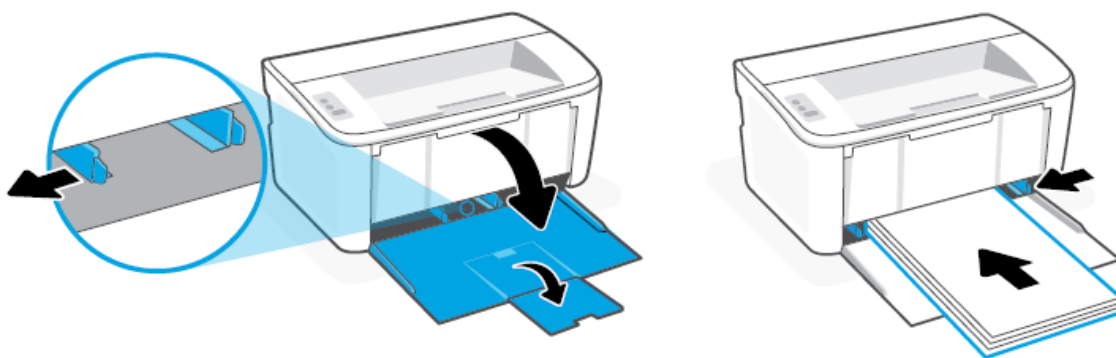
- Reinsert the cartridge and close the door.



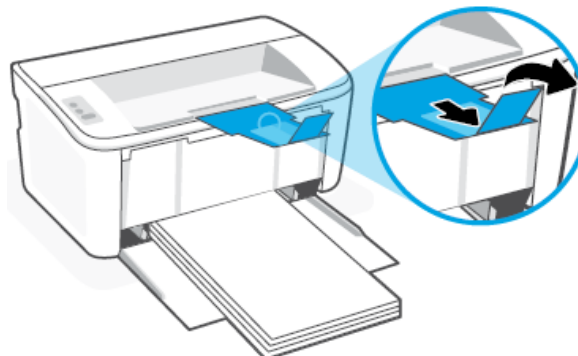
- Plug in and turn on the printer.



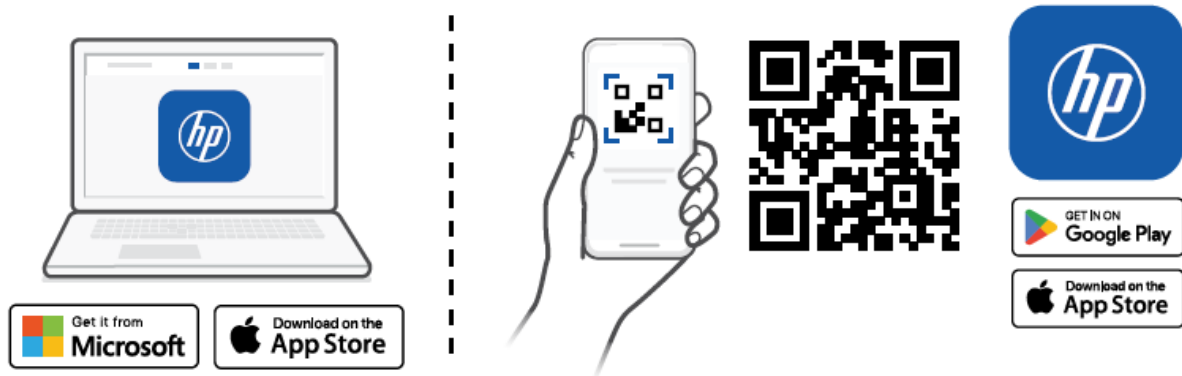
- Open the input tray and slide out the guides. Load Letter or A4 paper and adjust the guides.



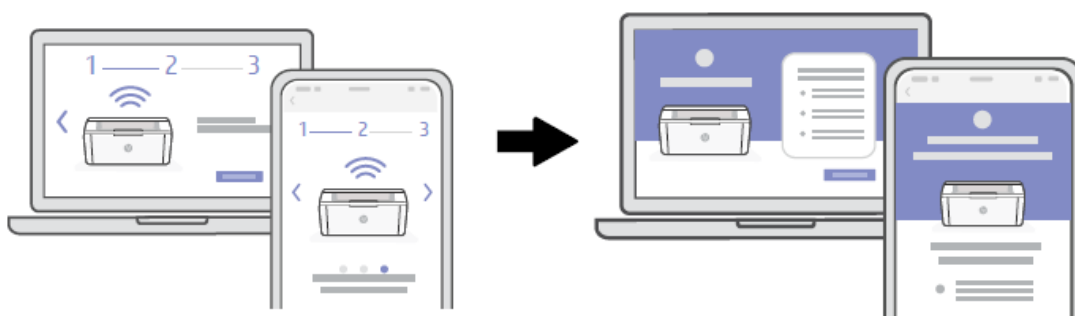
- Pull open the tray extender.



- Install the required HP app from [hp.com/start/install](https://hp.com/start/install) or your app store on a computer or mobile device.



- Follow the instructions in HP app to connect the printer to a network and finish setup.\*



See Reference Guide for Wi-Fi troubleshooting and tips.

### Trouble getting started?

- Find setup information and videos online.
- [hp.com/support/printer-setup](https://hp.com/support/printer-setup)



- App Store is a service mark of Apple Inc.
- Google Play and the Google Play logo are trademarks of Google Inc.
- The Apple logo is a trademark of Apple Inc., registered in the U.S. and other countries.
- © Copyright 2025 HP Development Company, L.P.



7MD66-90003

## FAQ

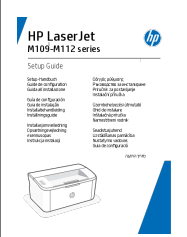
Q: How do I remove all tapes from the printer?

A: Depending on your language, follow the specific instructions provided in the manual to remove all tapes from the printer.

Q: Where can I find the Wi-Fi troubleshooting guide?

A: The Wi-Fi troubleshooting guide is available in the Reference Guide. Please refer to it for assistance.

## Documents / Resources

	<a href="#">hp M109,M112 Printer Software and Driver Downloads [pdf]</a> User Guide M109, M112, M109 M112 Printer Software and Driver Downloads, M109 M112, Printer Software and Driver Downloads, Software and Driver Downloads, Driver Downloads
--	--

## References

- [User Manual](#)

HP

Driver Downloads, HP, M109, M109 M112 Printer Software and Driver Downloads, M109-M112, M112, Printer Software and Driver Downloads, Software and Driver Downloads

## Leave a comment

Your email address will not be published. Required fields are marked \*

Comment \*

Name

Email

Website

☐ Save my name, email, and website in this browser for the next time I comment.

Post Comment

Search:

e.g. whirlpool wrf535swhz

Search

[Manuals+](#) | [Upload](#) | [Deep Search](#) | [Privacy Policy](#) | [@manuals.plus](#) | [YouTube](#)

This website is an independent publication and is neither affiliated with nor endorsed by any of the trademark owners. The "Bluetooth®" word mark and logos are registered trademarks owned by Bluetooth SIG, Inc. The "Wi-Fi®" word mark and logos are registered trademarks owned by the Wi-Fi Alliance. Any use of these marks on this website does not imply any affiliation with or endorsement.