

hp LSPM2GP2P Interface Card



hp LSPM2GP2P Interface Card User Guide

[Home](#) » [HP](#) » hp LSPM2GP2P Interface Card User Guide 

Contents

- [1 hp LSPM2GP2P Interface Card](#)
- [2 Specifications](#)
- [3 Overview](#)
- [4 Installing and removing an interface card](#)
- [5 Documentation](#)
- [6 FAQ](#)
- [7 Documents / Resources](#)
 - [7.1 References](#)



hp LSPM2GP2P Interface Card

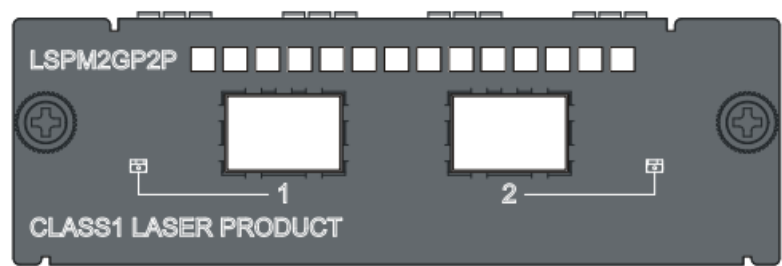


Specifications

- **Product Name:** HP LSPM2GP2P Interface Card
- **Model:** JD367A
- **Ports:** 2 1-Gbps SFP fiber ports
- **Compatible with:** HP A5500 Switch Series and A5120 Switch Series

Overview

The LSPM2GP2P interface card (JD367 A) provides two 1-Gbps SFP fiber ports and applies to multiple models of HP switches such as the HP A5500 Switch Series and the A5120 Switch Series.
Figure 1 Front panel of the LSPM2GP2P interface card



NOTE:
The LSPM2GP2P interface card applies to multiple models of HP switches, and the switch models that it applies to may update with time. For the latest information, contact HP technical support or marketing staff.

Description of SFP ports

The LSPM2GP2P interface card provides two 1-Gbps SFP ports. You can insert an SFP transceiver module into the port to connect it to another SFP port through an optical fiber. For more information about the supported SFP transceiver modules, see Table 1.

Table 1 SFP transceiver modules supported by LSPM2GP2P

SFP transceiver module		Product code
HP X120 1G SFP LC SX Transceiver		JD118B
HP X120 1G SFP LC LX Transceiver		JD119B
HP X125 1G SFP LC LH40 1310nm Transceiver		JD061A
HP X120 1G SFP LC LH40 1550nm Transceiver		JD062A
HP X125 1G SFP LC LH70 Transceiver		JD063B
HP X120 1G SFP LC LH100 Transceiver		JD103A
HP X120 1G SFP LC BX 10-U Transceiver	The two modules must be used in pairs.	JD098B
HP X120 1G SFP LC BX 10-D Transceiver		JD099B

- NOTE:**
- HP recommends that you use the SFP transceiver modules of HP on the LSPM2GP2P.
 - The types of SFP transceiver modules may update with time. For information about them, contact HP technical

support or marketing staff.

- For the models and specifications of each kind of SP transceiver, see the HP A-Series Switches Transceiver Modules User Guide.

Description of LEDs

There is an LED for each port on the panel of the LSPM2GP2P interface card.

Table 2 describes the LEDs.

LED	Status	Description
Port LED of the LSPM2GP2P interface card	On	The port is normally connected. The LED blinks quickly when the port is sending or receiving data.
	Off	The port is not up.

NOTE: Port LED of the LSPM2G2P interface card is not affected by the port mode switching button on your switch. For more information about the port mode switching button, see the installation guide of the switch.

Installing and removing an interface card

The following tools are needed for the installation and removal of an interface card:

- Phillips screwdriver
- ESD-preventive wrist strap

NOTE: The installation tools are not shipped together with HP's devices. Prepare them yourself.

Installing the LSPM2GP2P interface card

Installing the interface card to the switch

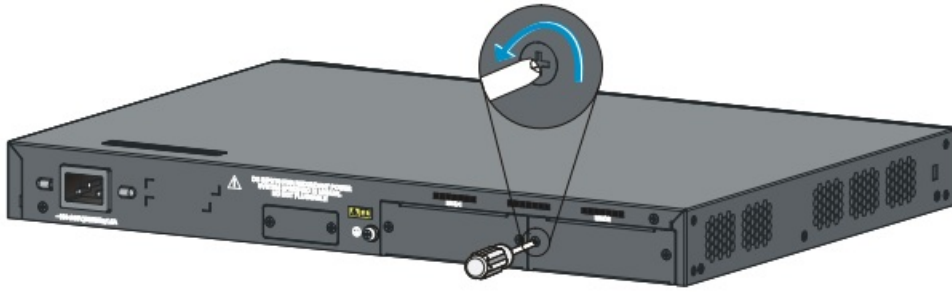
NOTE:

The procedure of installing the LSPM2GP2P interface card to different models of HP switches is similar. This user guide takes the A5500-24G EI Switch with 2 Interface Slots (JD377A) as an example.

Follow these steps to install the interface card to the switch:

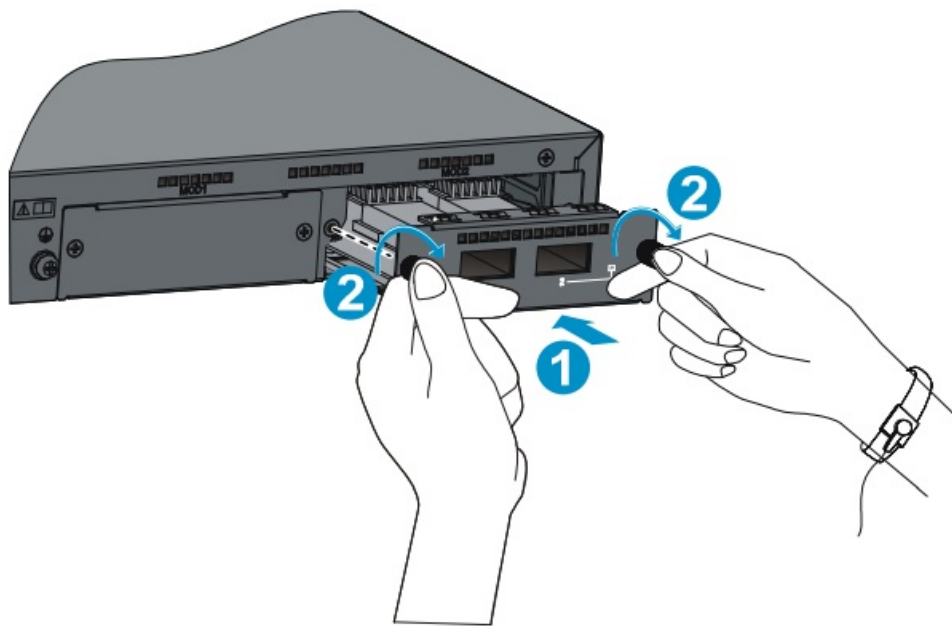
- **Step1** Wear an ESD-preventive wrist strap, and make sure that the ESD-preventive wrist strap makes good skin contact and is properly grounded.
- **Step2** Loosen the mounting screws of the filler panel on the interface card slot of the switch with a Phillips screwdriver and remove the filler panel, as shown in Figure 2.

Figure 2 Install an interface card (I)



- **Step3** Holding the fastening screws on the front panel of the SFP interface card, gently push the interface card in along the slot guide rail until the interface card is in close contact with the switch, as shown in Figure 3.
- **Step4** Tighten the captive screws with a Phillips screwdriver to fix the interface card.

Figure 3 Install an interface card (II)



NOTE:

- Keep the removed filler panel properly for future use.
- When tightening the fastening screws at both sides of the interface card with a screwdriver or an electric screwdriver, make sure that the torque is not bigger than 0.4 N-m.

Removing the interface card

Follow these steps to remove the interface card:

- **Step1** Wear an ESD-preventive wrist strap, and make sure that the ESD-preventive wrist strap makes good skin contact is properly grounded.
- **Step 2** Use a Phillips screwdriver to loosen the captive screws at both sides of the interface card until all spring pressure is released.
- **Step3** Pull the interface card towards you along the guide rails, until it completely comes out of the switch chassis

NOTE:

When installing or removing an interface card, note the following guidelines:

- Do not touch the surface-mounted components directly with your hands.
- Do not use too much force in the operation.
- After removing an interface card, if no new interface card is to be installed, install the filler panel as soon as possible to prevent dust and ensure normal ventilation in the switch

Installing an SFP transceiver module

To avoid component damage caused by improper installation, carefully read the SFP/SFP+/XFP Transceiver Modules Installation Guide from the HP's website before installing the SFP transceiver modules.

Verifying the installation

When the switch runs properly, check whether the interface card is operating properly according to the status of the Port LED on the LSPM2GP2P interface card.

Documentation

To find related documents, browse to the Manuals page of the HP Business Support Center website: <http://www.hp.com/support/manuals>

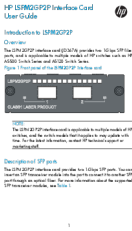
FAQ

- **Q: Which HP switches are compatible with the LSPM2GP2P interface card?**
 - A: The LSPM2GP2P interface card applies to multiple models of HP switches such as the HP A5500 Switch Series and A5120 Switch Series. For the latest information on compatible switch models, please contact HP technical support or marketing staff.
- **Q: Can I use the SFP transceiver modules individually without pairing them?**
 - A: No, the SFP transceiver modules must be used in pairs for proper functionality.

© Copyright 2011 Hewlett-Packard Development Company, L.P.
The information in this document is subject to change without notice.

- **BOM:** 3101A0DC
 - **Part number:** 5998-1727
 - **Version:** 6PW101-20110629
-

Documents / Resources

	<p>hp LSPM2GP2P Interface Card [pdf] User Guide</p> <p>LSPM2GP2P Interface Card, LSPM2GP2P, Interface Card, Card</p>
---	--

References

-  [Manual-Hub.com - Free PDF manuals!](#)
- [User Manual](#)

Manuals+. [Privacy Policy](#)

This website is an independent publication and is neither affiliated with nor endorsed by any of the trademark owners. The "Bluetooth®" word mark and logos are registered trademarks owned by Bluetooth SIG, Inc. The "Wi-Fi®" word mark and logos are registered trademarks owned by the Wi-Fi Alliance. Any use of these marks on this website does not imply any affiliation with or endorsement.