



hp jump2 Wired Mouse User Guide

[Home](#) » [HP](#) » [hp jump2 Wired Mouse User Guide](#) 

Contents

- [1 hp jump2 Wired Mouse](#)
- [2 Product Information](#)
- [3 USING INSTRUCTION](#)
- [4 BAR SCANNER](#)
- [5 Documents / Resources](#)
- [6 Related Posts](#)



hp jump2 Wired Mouse

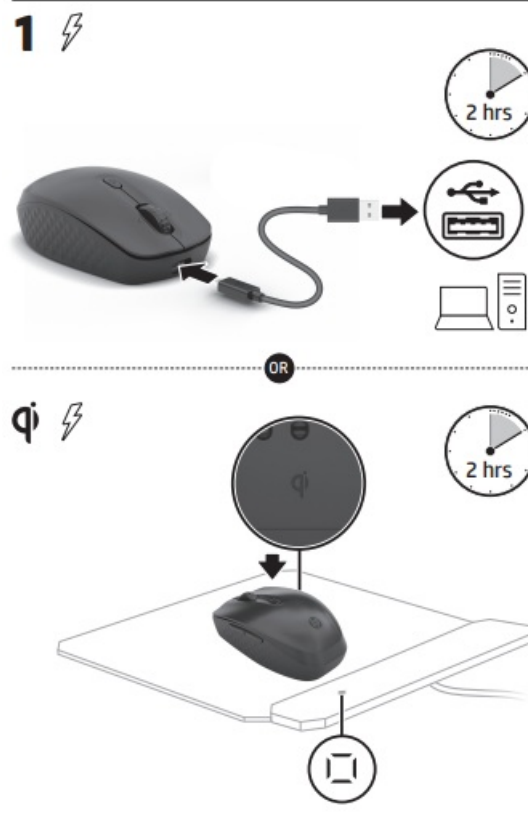


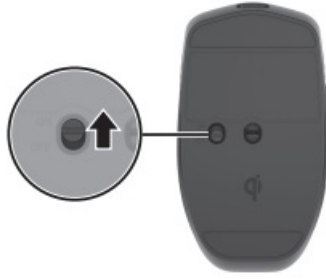
Product Information

- **Color Side 1:** BLACK

- **Color Side 2:** BLACK
- **Flat size:** 22.5 x 21 in. (571.5 x 533.4 mm)
- **Finished size:** 4.5 x 3 in (114.3 x 76.2 mm)

USING INSTRUCTION



2 

3 

Connect the mouse to up to three computers via Bluetooth®. To program the mouse buttons, download the software. If the software does not download automatically, on your computer, open Microsoft Store. Search for HP Accessory Center, and then download the app.

1. Programmable button

By default, press to use the Forward function in a web browser.

2. Programmable button

By default, press to use the Back function in a web browser.

3. Scroll wheel

Scrolls the screen up or down. Tilt right or left to use functions programmed in the app. By default, tilt right to scroll the screen right and tilt left to scroll the screen left.

4. Pairing lights

- **Quickly flashing white (180 s):** The mouse is in pairing mode.
- **Two blinks and pauses (180):** The mouse is reconnecting to a previously paired device.
- **Solid white (5 s):** The mouse paired or reconnected successfully to the selected computer.
- **Slow flashing amber:** The mouse battery needs to be recharged.

5. Pairing button

Press the button for less than 2s to switch between computers. Press and hold for 3 s to enter pairing mode for the selected computer.



BAR SCANNER



© Copyright 2023 HP Development Company, LP.

The Bluetooth trademarks are owned by their proprietor and used by HP Inc. under license.

The information contained herein is subject to change without notice. The only warranties for HP products and services are set forth in the express warranty statements accompanying such products and services. Nothing herein should be construed as constituting an additional warranty. HP shall not be liable for technical or editorial errors or omissions contained herein.

First Edition: June 2023

PRINTER: Replace this box with Printed- In (PI) Statement(5) as per spec.

NOTE: This box is simply a placeholder. PI Statements) do not have to fit inside the box but should be placed in this area.

Documents / Resources



[hp jump2 Wired Mouse](#) [pdf] User Guide

EMJMTPA-P007M, EMJMTPAP007M, mtpa p007m, jump2, jump2 Wired Mouse, Wired Mouse, Mouse