



HP X3000 G2 Wireless Mouse User Guide

[Home](#) » [Support](#) » HP X3000 G2 Wireless Mouse User Guide 

Contents

- [1 HP X3000 G2 Wireless Mouse](#)
- [2 POWER ON LAPTOP- PC](#)
- [3 DIMENSION](#)
- [4 FAQ's](#)
- [5 Does the HP X3000 G2 Wireless Mouse come with a warranty?](#)
 - [5.1 Related Posts](#)



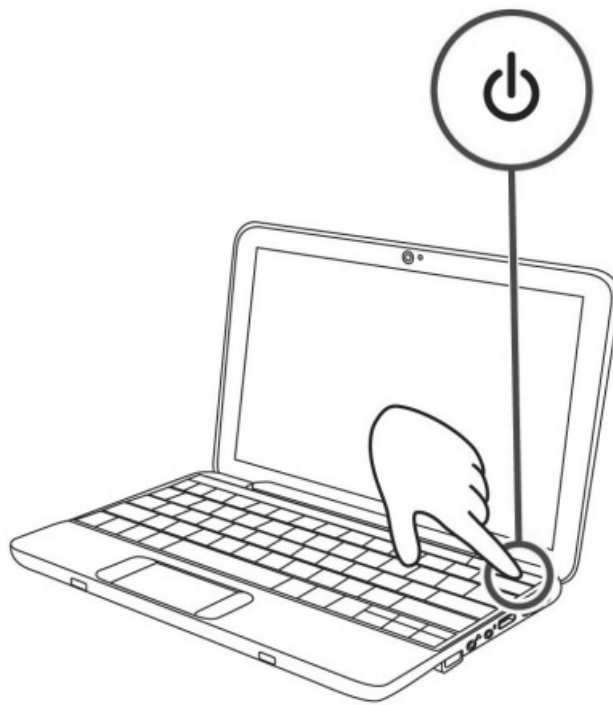
HP X3000 G2 Wireless Mouse



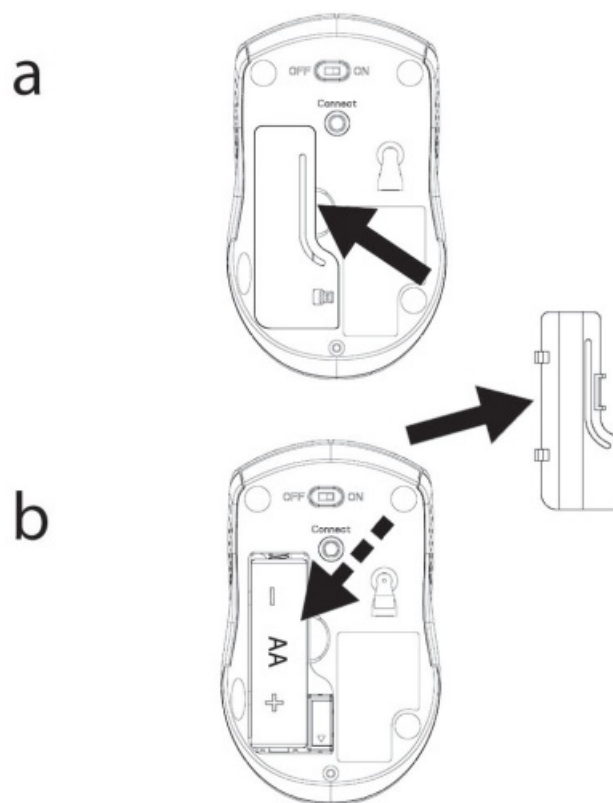
SPECIFICATIONS

- **Brand** HP
- **Color** Black
- **Connectivity Technology** Bluetooth
- **Special Feature** Portable
- **Movement Detection Technology** Optical
- **Hardware Interface** USB
- **Item Dimensions** 73 x 2.24 x 1.54 inches
- **Item Weight** 88 ounces
- **Sensor Technology** Optical
- **Series** X3000 G2
- **Operating System** Mac OS 9, Windows 8, Chrome OS, Windows 7, Windows 10
- **Power Source** Battery Powered
- **Operating System** Mac OS 9, Windows 8, Chrome OS, Windows 7, Windows 10

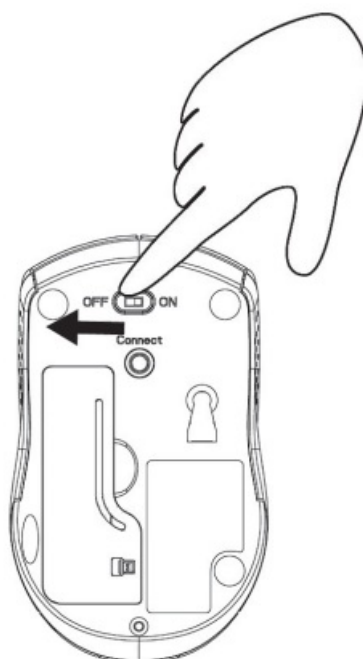
POWER ON LAPTOP- PC



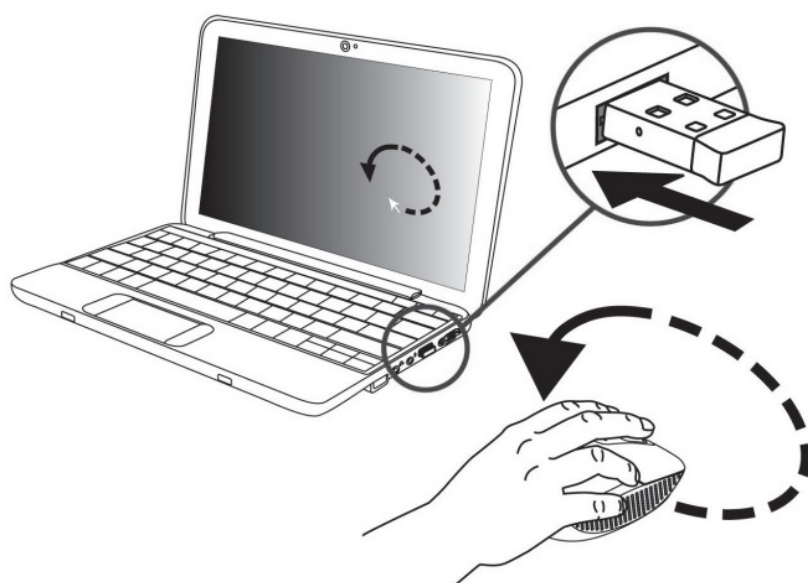
BATTERY REPLACEMENT



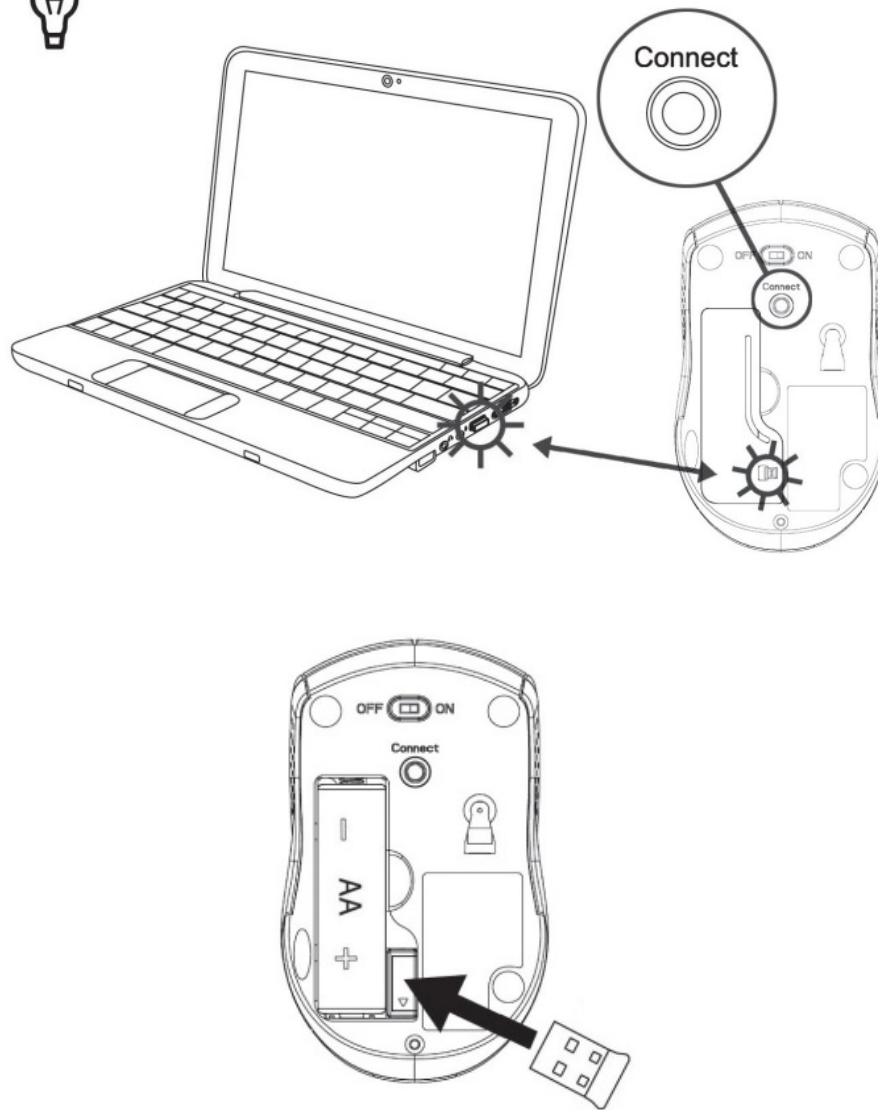
POWER ON/OFF



CONNECTION



PLUG AND PLAY

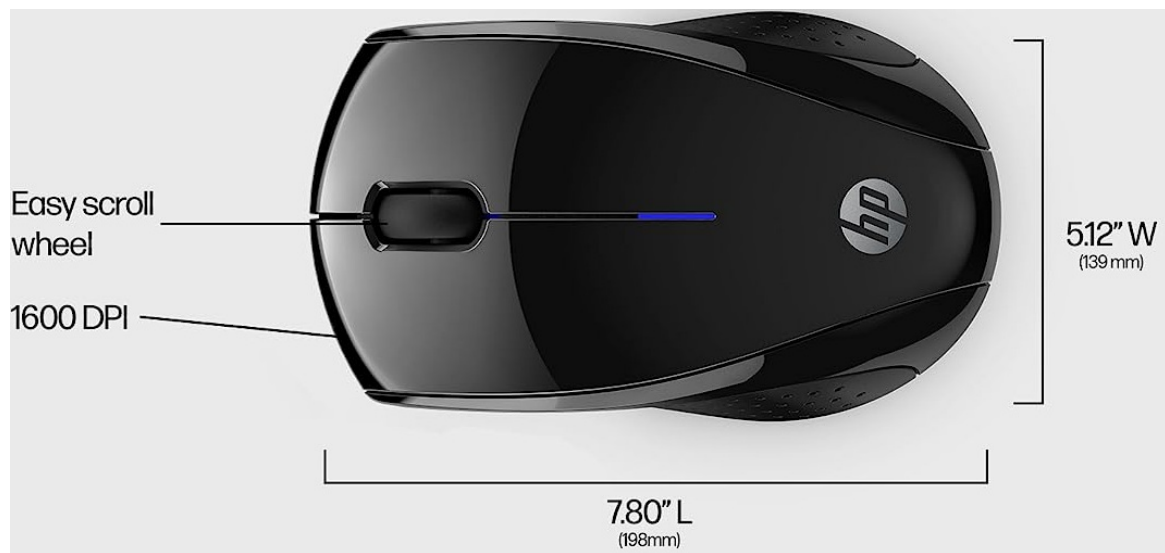


DESCRIPTION

Cut the connection and enjoy the freedom to work or play untethered from practically anywhere with the portable HP X3000 G2 Wireless Mouse. With this multi-OS (1) compatible wireless HP computer mouse's 3-button navigation and scroll wheel and 2.4 GHz wireless connectivity, you'll have easy control whether you're left- or right-handed. It also keeps you linked to your laptop or desktop computer from up to 30 feet away. Work comfortably almost anywhere thanks to Blue LED multi-surface technology, which provides accurate mouse tracking on almost any surface (2).

Take it with you wherever you go because the USB nano receiver for cordless connectivity easily stores inside the mouse. The HP X3000 G2 Wireless Mouse, which is built to push the envelope, travels the distance with you and can operate for up to 15 months on a single AA battery (3). Utilise your HP wireless mouse with assurance, since it is covered by a 1-year limited warranty and offers round-the-clock online assistance. Compatible with Chrome, Mac®, Windows® 10 and above. (2) There is no certainty that a multi-surface sensor will function on glass surfaces. (3) Based on a five-day workweek, 8 hours per day (active 4.3%, idle 4.1%, sleep 6.9%, deep sleep 84.7%), and 16 hours of sleep (100% deep sleep), the battery life is calculated.

DIMENSION



FEATURES

- **CONVENIENT DESIGN**

You can be busy all day using either hand with a contoured, wireless optical mouse with three navigation buttons and an integrated scroll wheel. This optical mouse is multi-OS (1) and multi-device and provides you the ability to work or play from practically anywhere.

- **SMARTPHONE CONVENIENCE**

With 2.4 GHz USB-A connectivity, you may go cordless and maintain a connection for up to 30 feet.

- **PERFORMANCE ON MULTI-SURFACE**

With Blue LED multi-surface technology that provides lag-free, smooth movement on almost any surface, you can be prepared for anything (2).

- **ACUITY CONTROL**

A 1600 dpi optical sensor offers precise mouse tracking, outstanding speed, and adaptable settings to suit your working preferences.

- **CONSUMABLE POWER**

This HP wireless mouse is made to push the envelope and work as hard as you do, offering up to 15 months of use on a single AA battery (3).

DISPOSAL

Disposal of Waste Equipment by Users in Private Households in the European Union This symbol on the product or on its packaging indicates that this product must not be disposed of with your other household waste. Instead, it is your responsibility to dispose of your waste equipment by handing it over to a designated collection point for the recycling of waste electrical and electronic equipment.

The separate collection and recycling of your waste equipment at the time of disposal will help to conserve natural resources and ensure that it is recycled in a manner that protects human health and the environment. For more information about where you can drop off your waste equipment for recycling, please contact your local city office, your household waste disposal service or the shop where you purchased the product.

DECLARATION OF CONFORMITY

The product herewith complies with the requirements of the Low Voltage Directive 2006/95/EC, the EMC Directive 2004/108/EC, the R&TTE Directive 99/5/EC, and carries the CE-marking accordingly. This device complies with

Part 15 of FCC rules. Operation is subject to the following two conditions:

- This device may not cause harmful interference
- This device must accept any interference received, including interference that may cause undesired operation.

Additional Information:

This product is assigned a Regulatory Model Number which stays with the regulatory aspects of the design. The Regulatory Model Number is the main product identifier in the regulatory documentation and test reports, this number should not be confused with the marketing name or the product numbers.

NOTE: This equipment has been tested and found to comply with the limits for a Class B digital device, pursuant to Part 15 of the FCC Rules. These limits are designed to provide reasonable protection against harmful interference in a residential installation. This equipment generates, uses, and can radiate radio frequency energy and, if not installed and used in accordance with the instructions, may cause harmful interference to radio communications. However, there is no guarantee that interference will not occur in a particular installation. If this equipment does cause harmful interference to radio or television reception, which can be determined by turning the equipment off and on, the user is encouraged to try to correct the interference by one or more of the following measures:

- Reorient or relocate the receiving antenna
- Increase the separation between the equipment and the receiver
- Connect the equipment into an outlet that is on a circuit different from that to which the receiver is connected.
- Consult the dealer or an experienced radio/TV technician for help.

Caution – Pursuant to 47 CFR15.21 of the FCC Rules any changes or modifications to this equipment not expressly approved by the Hewlett-Packard Company may cause harmful interference and void the FCC authorization to operate this equipment.

CAUTION: Risk of explosion if the battery is replaced by an incorrect type. Dispose of used batteries according to the instructions. For use only with UL Listed I.T.E. computer.

Local contact for regulatory topics only:

EMEA: Hewlett-Packard GmbH, HQ-TRE, Herrenberger Strasse 140, 71034 Boeblingen, Germany
This Class B digital apparatus complies with Canadian ICES-003.

FAQ's

How do I connect the HP X3000 G2 Wireless Mouse to my computer?

To connect the HP X3000 G2 Wireless Mouse, simply plug the USB receiver into an available USB port on your computer. The mouse will automatically connect to the receiver.

Is the HP X3000 G2 Wireless Mouse compatible with Mac computers?

Yes, the HP X3000 G2 Wireless Mouse is compatible with both Windows and Mac computers.

Does the HP X3000 G2 Wireless Mouse require batteries?

Yes, the HP X3000 G2 Wireless Mouse requires one AA battery for operation. The battery is usually included in the package.

How long does the battery last in the HP X3000 G2 Wireless Mouse?

The battery life of the HP X3000 G2 Wireless Mouse can vary depending on usage, but on average, it can last for several months before needing to be replaced.

Does the HP X3000 G2 Wireless Mouse have adjustable sensitivity settings?

No, the HP X3000 G2 Wireless Mouse does not have adjustable sensitivity settings. It operates at a standard sensitivity level.

Can I use the HP X3000 G2 Wireless Mouse on a glass surface?

The HP X3000 G2 Wireless Mouse works best on non-reflective surfaces. While it may work on some glass surfaces, it is recommended to use a mouse pad or another non-reflective surface for optimal performance.

Is the HP X3000 G2 Wireless Mouse suitable for gaming?

The HP X3000 G2 Wireless Mouse is designed for general computing tasks and may not be ideal for intense gaming. It has a standard DPI and lacks extra programmable buttons typically found on gaming mice.

Can I customize the buttons on the HP X3000 G2 Wireless Mouse?

No, the HP X3000 G2 Wireless Mouse does not have customizable buttons. It features the standard left and right buttons along with a clickable scroll wheel.

Is the HP X3000 G2 Wireless Mouse ambidextrous?

Yes, the HP X3000 G2 Wireless Mouse is ambidextrous, meaning it can be comfortably used by both right-handed and left-handed individuals.

Does the HP X3000 G2 Wireless Mouse come with a warranty?

Yes, the HP X3000 G2 Wireless Mouse usually comes with a limited warranty. The duration of the warranty may vary depending on the region, so it's best to check with the retailer or HP's official website for specific details.

Can I use the HP X3000 G2 Wireless Mouse on multiple devices simultaneously?

No, the HP X3000 G2 Wireless Mouse operates on a single USB receiver and can only be connected to one

device at a time.

How do I clean the HP X3000 G2 Wireless Mouse?

To clean the HP X3000 G2 Wireless Mouse, gently wipe the surface with a soft, lint-free cloth. Avoid using abrasive or harsh cleaning agents, as they may damage the mouse's finish.

Download This PDF Link: [HP X3000 G2 Wireless Mouse User Guide](#)

Manuals+.