



Projector CP180 Quick Start Guide

Congratulations and thank you for purchasing HP CP180 projector, wishing you a wonderful big-screen audiovisual experience.

Contents [[hide](#)]

[1 Package Contents:](#)

[2 Product I/F:](#)

[3 Remote Control:](#)

[4 Specification](#)

[5 Documents / Resources](#)

[5.1 References](#)

Package Contents:

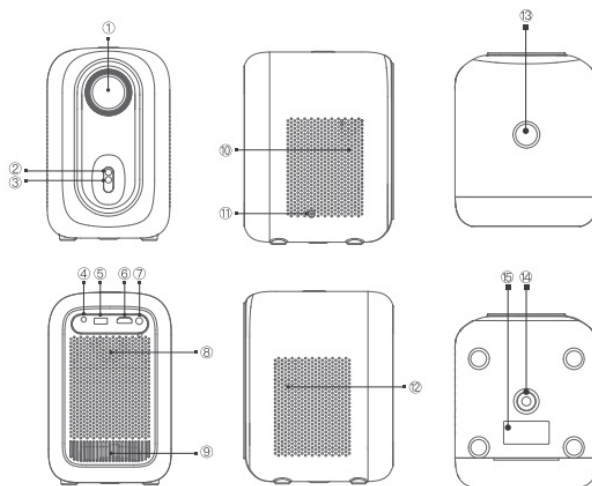
HP CP180*1

<Accessories>

- Power Adapter *1
- Power Cord *1
- Remote Control *1

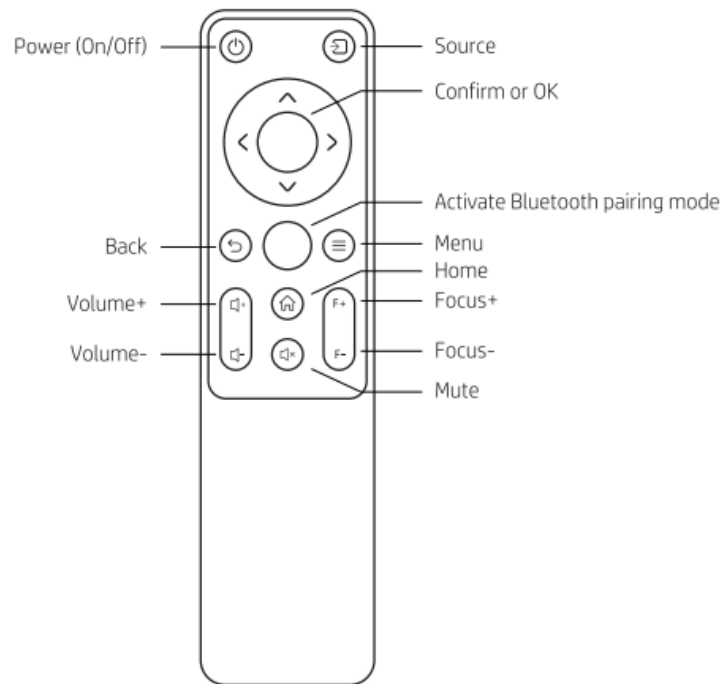
- AAA Battery *2 (For Remote Control)
- HP Projection Service card *1
- Quick Start Guide *1
- Warranty Card *1
- Product Notice * 1

Product I/F:



1. Lens
2. Infrared remote control receiver window
3. Camera
4. Headphone jack
5. USB
6. HDMI
7. Infrared remote control receiver window
8. Speaker
9. Exhaust vent
10. Air intake
11. Power socket (Adapter 19.5V)
12. Air intake
13. Power Key (On/Off)
14. Mounting screw hole (1/4 inch nut*1, depth 6mm), also supports hanging
15. Nameplate

Remote Control:



USAGE TIPS

1. Power Operation Power On: Press the power key to turn on the CP180.

Power Off: While the CP180 is operating, press the power key to shut it down.

2. Focus Adjustment

The CP180 features an autofocus function that automatically adjusts images. If you find the projection display is not crisp enough, use the “F” and “F-” keys on the remote to sharpen the image

3. Initial Setup

When using the CP180 for the first time, please follow the on-screen instructions to connect to Wi-Fi

Bluetooth Remote Pairing

If you skip the Bluetooth remote control during startup or if you need to set it up again, you can follow these steps

Method 1:

Step 1. Activate Bluetooth Pairing Mode:

Press the “Activate Bluetooth Pairing Mode” key on the remote control to initiate the pairing process.

Step 2. Pair with Bluetooth Remote:

Press and hold the “Menu” and the “Mute” keys on the remote control at the same time. When the indicator light flashes, it indicates that the device has entered Bluetooth pairing mode. Once the indicator light turns off, the Bluetooth pairing is

complete.

Method 2: Setting Bluetooth Add accessory

Wi-Fi Connection

If you skip Wi-Fi configuration during the initial setup, you can configure it later.

Setting Wi-Fi-tum on Wi-Fi Connect your Wi-Fi/Add new network

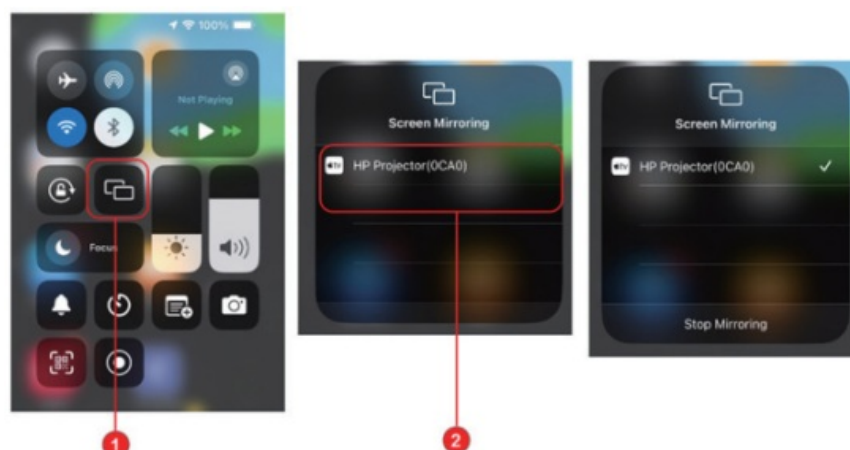
4. Start to Use

Users can browse a vast library of audiovisual content via apps installed within the App Center or download apps from App Center's store. Additionally, they can wirelessly mirror their smartphone's screen, connect their computer or DVD player via HDMI, or access multimedia files from their USB drive,



5. Wireless Projection

Note: Ensure that both the CP180 and your device are connected to the same network. For iOS: Open the Control Center and select “Screen Mirroring → HP Projector



For iOS and Android: Install the “TV Casting” app, open it, and follow the on-screen instructions to mirror your device's screen.

6. Speaker Mode

The CP180 allows its speaker to function as a Bluetooth speaker when paired with

your device. To enter “Speaker Mode,” locate and pair with “HP Projector BT.” Upon successful pairing, the projection screen will temporarily deactivate. Exit “Speaker Mode” by pressing the “Back” key on the remote control.

7. Setting

Users can personalize projector settings, including network configuration, Bluetooth pairing, and other advanced system preferences.

8. Advanced Features

CP180 supports auto focus, auto keystone correction, and side projecting. Enable/disable it by going to: Setting Projection → Auto Focus/Auto Keystone, then press the “OK” key to apply changes.

Under manual keystone adjustment, select “4-point Keystone” or “4-side Keystone” to fine-tune the image alignment.

Note: The automatic keystone correction of CP180 only supports vertical (up and down) automatic keystone, the horizontal (left and right) is not supported

9. Info

Discover the innovative world of HP Projectors by visiting our website <https://www.hp-projector.com/>

Enjoy your CP180!

Specification

Product Name	HP Projector CP180
Display Technology	1 LCD Enclosed OE Design
Light Source	LED
Focusing	Auto Focus
Wi-Fi	Wifi6 Dual Band 2.4G+SG
Bluetooth	5.0
HDMI Port	*1
USB Port	

Input Voltage (DC)		19.5V
Power Consumption		45W
Power Supply	Adapter	HP Adapter
	Input (AC)	100-240V -1.4k 50-60Hz
	Output (DC)	19.5V – 3.33A, 65W
Weight		1.33kg
Operating Environment		0°C to 35°C
Input Interface		HDMI / USB
Output Interface		3.5 Mm Audio Output
Display Ratio		16:9 / 4:3
Machine Dimensions		126mm x 154mm x 200mm
Remote Control Operation		Yes

Multimedia Playback Formats


Image Formats	JPG / PNG / PEG / BMP / GIF
Video Formats	MP4/MPG/RM/MKV/AVI/TS/V0B/ M2TS / 3GP / MOV / RM VB / FLV / F4V/ wEBm/ SwF/ M4V
Audio Formats	MP3 / AAC / FLAC / M4A / WAV / OGG / APE / MID
Text Formats	TXT / EXCEL / WORD / PDF (The WPS application software needs to be installed in advance.)

Technical Support: For more detailed usage instructions, please download the HP CP180 user manual at <https://www.hp-projector.com/support>
GT Technology (Chongqing) Limited The manufacturer under the license of HP Inc.

Email: support@hp-projector.com

Web: www.hp-projector.com

Documents / Resources

	<p>hp CP180 TFT LCD Projector [pdf] User Guide</p> <p>82-306-10001-100, CP180 TFT LCD Projector, CP180, TFT LCD Projector, LCD Projector, Projector</p>
---	---

References

- [User Manual](#)

82-306-10001-100, CP180, CP180 TFT LCD Projector, HP, LCD Projector, Projector, TFT LCD

HP Projector

Leave a comment

Your email address will not be published. Required fields are marked *

Comment *

Name

Email

Website

☐ Save my name, email, and website in this browser for the next time I comment.

Post Comment

Search:

e.g. whirlpool wrf535swhz

Search

[Manuals+](#) | [Upload](#) | [Deep Search](#) | [Privacy Policy](#) | [@manuals.plus](#) | [YouTube](#)

This website is an independent publication and is neither affiliated with nor endorsed by any of the trademark owners. The "Bluetooth®" word mark and logos are registered trademarks owned by Bluetooth SIG, Inc. The "Wi-Fi®" word mark and logos are registered trademarks owned by the Wi-Fi Alliance. Any use of these marks on this website does not imply any affiliation with or endorsement.