



hp C08611076 Anyware Remote Controller System User Guide

[Home](#) » [HP](#) » hp C08611076 Anyware Remote Controller System User Guide 

hp C08611076 Any ware Remote Controller System



Contents

1 HP Anyware Remote System Controller AMO and CTO Offerings

1.1 Introduction

2 HP Anyware Integrated Remote System Controller

2.1 Overview

2.1.1 After Market Option Kits

2.1.2 Manageability Features

3 After Market Option Kits

3.1 Overview

3.1.1 Embedded Software

3.1.2 HP Any ware Remote System Management

3.1.3 Redfish® API

3.2 Technical Specifications

3.3 Feature Comparison by Platform

3.4 Technical Specifications

3.4.1 Security Features

3.5 Service, Support, and Warranty

3.6 Technical Specifications

3.6.1 Certifications and Compliance

4 Documents / Resources

4.1 References

5 Related Posts

HP Anyware Remote System Controller AMO and CTO Offerings

Introduction

The HP Any ware Remote System Controller and HP Any ware Integrated Remote System Controller are remote management peripherals meant to provide out-of-band management to Z Desktop Workstations and select HP Engage Retail Systems. The two different brand names refer to two different form factors of essentially the same product, but with some important differences between the two that are further described later in this document. The HP Any ware Remote System Controller is an external device, and the HP Any ware Integrated Remote System Controller is an internal PCIe device. Both are compatible with most compute devices¹ as an IP KVM² (including Macs) as long as the said compute device has available USB type-A ports and display outputs, but the HP Any ware Remote System Controller (external device) is recommended for use with other compute devices.

Although they are both compatible with other compute devices, users achieve a significantly more advanced feature set when pairing the HP Any ware Remote System Controller or HP Any ware Integrated Remote System Controller with Z by HP Desktop Workstation and select HP Engage Retail Systems.

There are various software methods to interface with the HP Any ware Remote System Controller and HP Any ware Integrated Remote System Controller to enable remote management of entire fleets of remote compute devices. These software methods are described briefly in the 'Software Overview' section of this document, but this document focuses primarily on the hardware devices.

NOTE: When this document refers to both the HP Any ware Remote System Controller and HP Any ware Integrated Remote System Controller, it may combine the two as such: HP Any ware (Integrated) Remote System Controller. Remote System Controller may be abbreviated as RSC.

1. HP Any ware Integrated Remote System Controller not compatible with Z2 Mini platforms and not recommended for non-Z devices. HP service and support not available for non-Z devices. Full suite of hardware alerts available with select Z desktop workstations. See datasheet for details.
2. IP KVM refers to the ability to remotely interface with the host machine with keyboard, monitor and mouse

control over a network.

3. Only the Integrated Remote System Controller has been qualified with select HP Engage Retail Systems.

HP Any ware Remote System Controller AMO and CTO Offerings

The HP Any ware Remote System Controller and HP Any ware Integrated Remote System Controller are both available as configure to order (CTO) options on select Z by HP Desktop Workstations and are also available for purchase as an aftermarket option (AMO). See below for which platforms offer CTO options and for a complete list of the after-market options.

CTO Availability:

- HP Z2 Mini G9 (Remote System Controller only, HP Anyware Integrated Remote System Controller not compatible)
- HP Z2 Small Form Factor G9
- HP Z2 Tower G9
- HP Z Central 4R
- HP Z4 G5
- HP Z6 G5
- HP Z8 G5
- HP Engage Flex Pro G2
- HP Engage Flex Pro C G2

NOTE: CTO availability subject to change.

AMO Offerings:

NOTE: For more information on each of the AMO kits below, see the “After Market Option Kits” part of the ‘Overview’ section in this document

Description	Part Number	Use Case
HP Any ware Remote System Controller	7K6D7AA	AMO kit for use with the following platforms: – Z2 G9 or later – Z4, Z6, Z8 G4 or later – Z Central 4R *For use with the Z Central 4R, Z4 G4, Z6 G4, and Z 8 G4, the HP Z4/Z6/Z8 G4 / Z Central 4R Remote System Controller Cable Adapter (7K6E5AA) is required
HP Any ware Remote System Controller for Universal KVM	7K7N2AA	AMO kit for non-Z by HP compute devices and Z by HP platforms prior to the systems listed for 7K6D7AA

HP Z2 Mini Remote System Controller	7K6E4AA	AMO kit for use specifically with the HP Z2 Mini G9
HP Any ware Integrated Remote System Controller	7K6D9AA	<p>AMO kit for the Integrated Remote System Controller for use with the following platforms:</p> <ul style="list-style-type: none"> – Z2 G9 or later (excluding the Z2 Mini) – Z4, Z6, Z8 G4 or later – Z Central 4R <p>*For use with the Z Central 4R, Z4 G4, Z6 G4, and Z8 G4, the HP Z4/Z6/Z8 G4 / Z Central 4R Remote System Controller Cable Adapter (7K6E5AA) is required</p>
HP Any ware Remote System Controller Main Board Adapter	7K6D8AA	<p>AMO kit for the Z Desktop Power and Signal Interface for allowing external power button enablement and BIOS access to the following platforms:</p> <ul style="list-style-type: none"> – Z2 G9 or later (excluding the Z2 Mini) – Z4, Z6, Z8 G4 or later – Z Central 4R <p>*This adapter is already included with 7K6D7AA. This kit does not include the HP Any ware Remote System Controller. This kit is intended for customers who want to share a single Remote System Controller between several devices</p>
HP Z4/Z6/Z8 G4 / Z Central 4R Remote System Controller Cable Adapter	7K6E5AA	AMO kit containing the adapter required to use the Remote System Controller with the Z Central 4R, Z4 G4, Z6 G4, and Z8 G4
HP Any ware Integrated Flex Pro Remote System Controller	9B141AA	AMO kit containing the integrated Remote System Controller for use with the HP Engage Flex Pro G2 and HP Engage Flex Pro C G2

AMO Decoder by Platform:

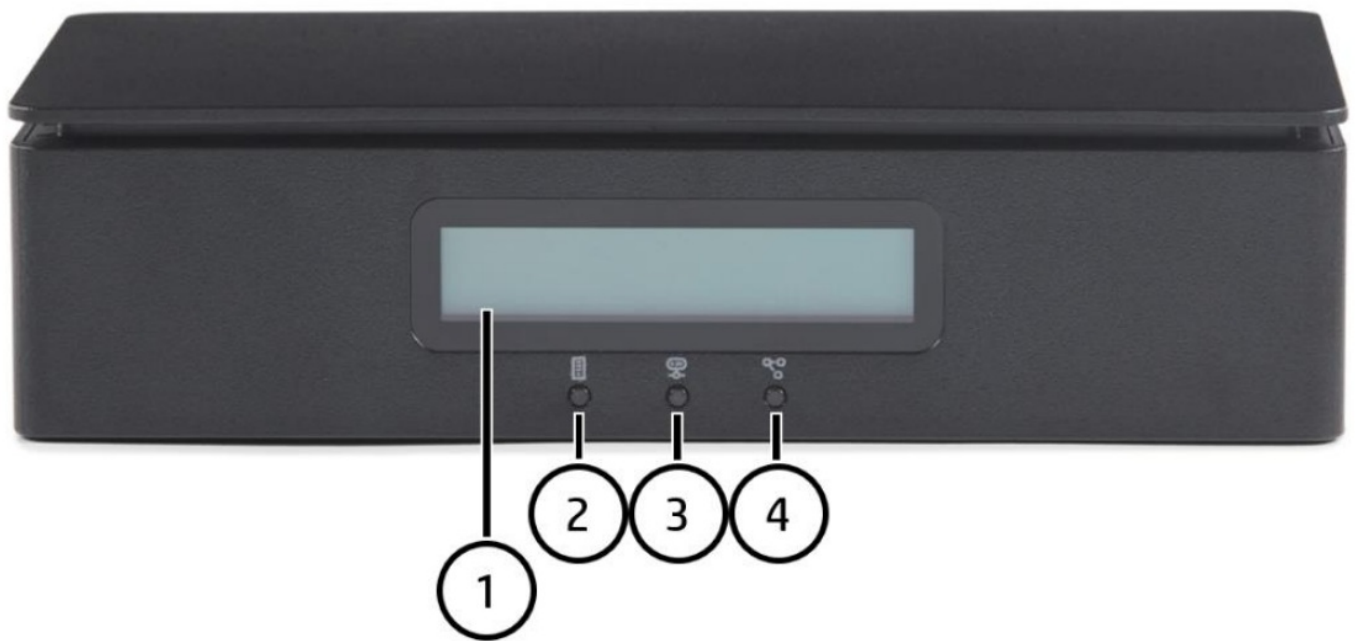
I Am Using A...	Needed AMO Kit
<ul style="list-style-type: none"> • HP Z2 Small Form Factor G9 • HP Z2 Tower G9 • HP Z4 G5 • HP Z6 G5 • HP Z8 G5 • HP Z8 Fury G5 	<ul style="list-style-type: none"> • HP Any ware Remote System Controller (7K6D7AA) for those who want the external form factor • HP Any ware Integrated Remote System Controller (7K6D9AA) for those who want the internal form factor • HP Any ware Remote System Controller Main Board Adapter (7K6D8AA) for those who just need to add the proprietary 10-pin Z Desktop Power and Signal Interface to their systems. This kit does not include the HP Any ware Remote System Controller itself. This adapter is already included with 7K6D7AA

<ul style="list-style-type: none"> • HP Z2 Mini G9 	<ul style="list-style-type: none"> • HP Z2 Mini Remote System Controller (7K6E4AA) for those who want the external form factor. The internal form factor is not supported on the Z2 Mini G9
<ul style="list-style-type: none"> • HP Z4 G4 • HP Z6 G4 • HP Z8 G4 • HP Z Central 4R 	<ul style="list-style-type: none"> • First purchase the HP Z4/Z6/Z8 G4 / Z Central 4R Remote System Controller Cable Adapter (7K6E5AA) to ensure you have the right adapter and then add either of the below depending on which form factor is desired: <ul style="list-style-type: none"> ◦ HP Any ware Remote System Controller (7K6D7AA) for those who want the external form factor ◦ HP Any ware Integrated Remote System Controller (7K6D9AA) for those who want the internal form factor
<ul style="list-style-type: none"> • HP Engage Flex Pro G2 • HP Engage Flex Pro C G2 	<ul style="list-style-type: none"> • HP Any ware Integrated Flex Pro Remote System Controller (9B141AA)
<ul style="list-style-type: none"> • Z by HP Workstation not listed above • Workstation or PC from another vendor • Mac • Server 	<ul style="list-style-type: none"> • HP Any ware Remote System Controller for Universal KVM (7K7N2AA). This AMO kit includes all of the necessary components for using the HP Any ware Remote System Controller with a system that doesn't support the proprietary 10-pin Z Desktop Power and Signal Interface.

HP Any ware Remote System Controller

1. LCD Screen
2. Host Status LED

3. Remote System Controller status LED
4. Remote Connection status LED



Front View

1. Power and Signal Interface (compatible with Z desktops only)
2. Mini DisplayPort™ for graphics input
3. USB for Mouse/Keyboard/Mass Storage Emulation
4. 1GbE Network for Pass Through Ethernet



Left View (Host-Facing Ports)

1. Kensington Lock Mount
2. 12V DC Power Jack with AC/DC adapter (not needed with Z desktops)
3. 1GbE Network for Remote Connection



Right View (Network-Facing Ports)

NOTE: Factory Reset Button is located on the bottom of the Remote System Controller.

Product Part Numbers	7K6D7AA/7K7N2AA/7K6E4AA (see HP Any ware Remote System Controller AMO and CTO Offerings section)
Product Dimensions (Lx WxH)	5.12 x 2.76 x 1.28 in (130 x 70 x 35 mm)
Product Weight	10.83 ounces (307 grams)
Product Color	Jack Black
Compatibility	<p>As a Universal KVM, all platforms are intended to be compatible if they can interface with both the DisplayPort™ Input and USB Input ports.</p> <p>Power Control, Host Power Status, and Host Power are available with the HP Z4/Z6/Z8 G4 and Z Central 4R platforms when using the HP Z4/Z6/Z8 G4 / Z Central 4R Remote System Controller Cable Adapter (7K6E5AA) and the Main Board Adapter (included in 7K6D7AA or sold separately as 7K6D8AA).^{1,2}</p> <p>The Z2 G9 and Z4/Z6/Z8 G5 platforms and later all support full compatibility using the kit</p> <p>7K6D7AA for the HP Any ware Remote System Controller.</p>
Compatible Operating Systems	The HP Any ware Remote System Controller and accompanying HP Any ware Remote System Management software is compatible with all operating systems.
Power Supply	<p>Power supply is only included with the HP Any ware Remote System Controller for Universal KVM (7K7N2AA) AMO kit, to provide power to the Remote System Controller when power from the host is not available:</p> <p>Lite On AC to DC Adapter Model: PA-1041-81</p> <p>Input: 100-240V AC, 50/60Hz 1.2A1 (Cord Length 6 feet or 1.83 meters) Output: 12.0V DC 3.33A (40.0W)² (Cord Length 4 feet or 1.2 meters)^{3,4}</p>
Operating Temperature	Max ambient temperature with AC adapter: 40°C Max ambient temperature without AC adapter: 50°C

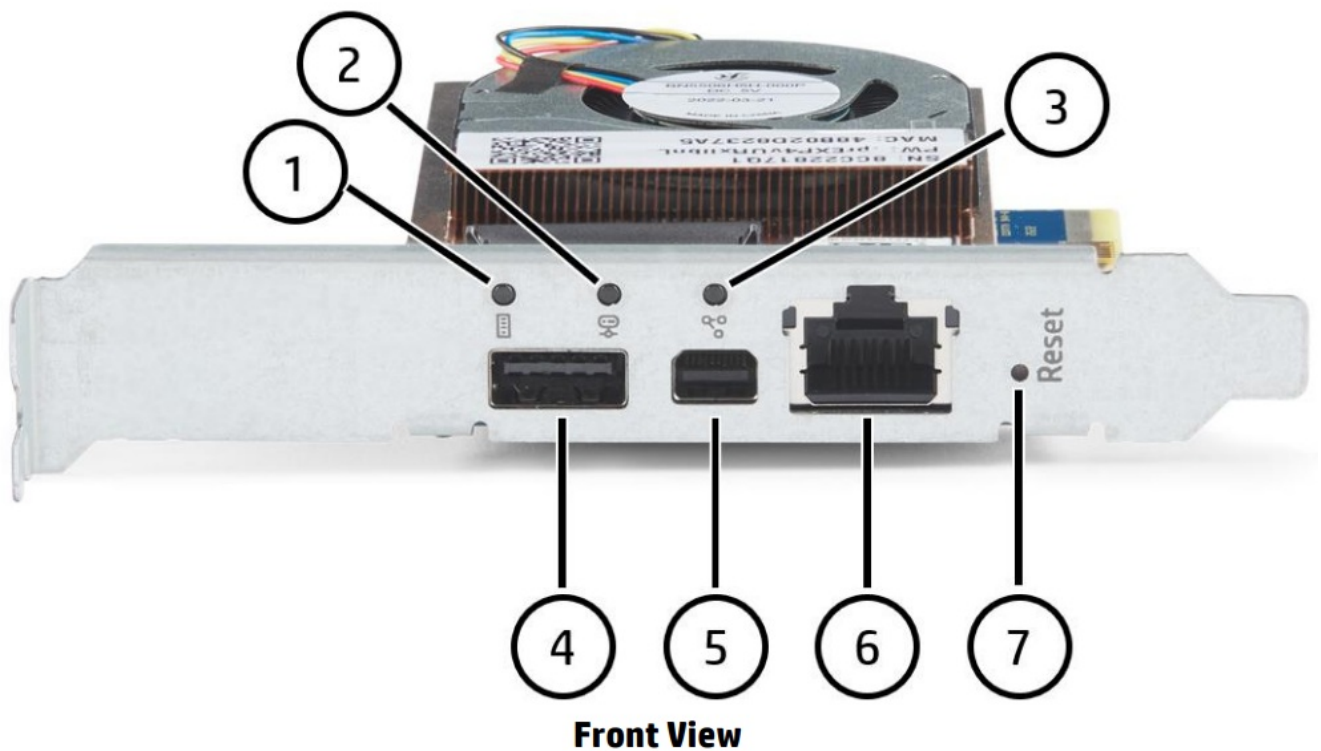
1. The latest BIOS update is required so the host provides power to the HP Any ware Integrated Remote System Controller in all host power states.
2. By installing the HP Z4/Z6/Z8 G4 / Z Central 4R Remote System Controller Cable Adapter (7K6E5AA), power will be stolen from the front USB ports on the host. This was necessary to be able to power the Remote System Controllers in all power states, and it leaves the front USB ports unpowered and unusable.
3. The AC power cord is localized to provide compatibility with most countries.
4. The expected maximum wattage of the HP Any ware Remote System Controller is 18W with idle power expected in the 4-5W range.

HP Anyware Integrated Remote System Controller

Overview

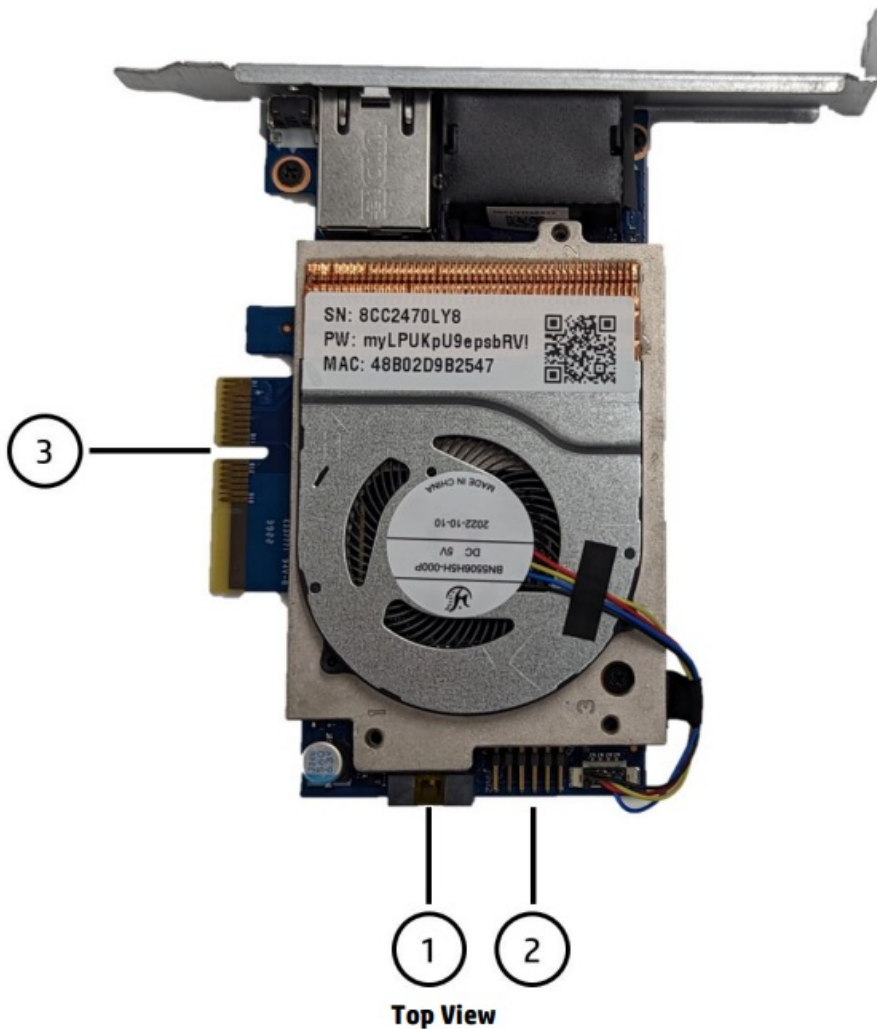
HP Any ware Integrated Remote System Controller

1. Host status LED
2. Remote System Controller status LED
3. Remote Connection status LED
4. USB for Mouse/Keyboard/Mass Storage Emulation¹
5. Mini DisplayPort™ for graphics input
6. 1GbE Network for Remote Connection
7. Factory Reset Button



¹The front USB Type-A port is not needed if the internal USB 3.0 connector (shown as #2 in Top View) is being used.

1. Power and Signal Interface (compatible with Z desktops only)
2. Internal USB 3.0 for Mouse/Keyboard/Mass Storage Emulation¹
3. PCIe Connector²



1. The internal USB 3.0 connector is not needed if the front USB Type-A port (shown as #4 in Front View) is being used.
2. The function of the PCIe connector is purely electromechanical. No signal is passed over the PCIe bus and the host system will not recognize the HP Anyware Integrated Remote System Controller as a PCIe device.

HP Any ware Integrated Remote System Controller	
Product Part Numbers	7K6D9AA / 9B141AA (see HP Any ware Remote System Controller AMO and CTO Offerings section)
Product Dimensions (Lx WxH)	4.41 x 2.76 x 0.79 in (112 x 72 x 20 mm) ¹
Product Weight	4.46 ounces (126.4 grams) ²
Bus Type	PCI Express x43
Compatibility	<p>The HP Any ware Integrated Remote System Controller is fully compatible with the Z2 G9 and Z4/Z6/Z8 G5 platforms as well as the HP Engage Flex Pro G2 and HP Engage Flex Pro C G2. When using the HP Any ware Integrated Remote System Controller with the Z Central 4R and Z4/Z6/Z8 G4 platforms, the HP Z4/Z6/Z8 G4 / Z Central 4R Remote System Controller Cable Adapter (7K6E5AA) is required to supply auxiliary power to the HP Any ware Integrated Remote</p> <p>System Controller, as well as power control, and host power status.^{4,5}</p>
Compatible Operating Systems	The HP Any ware Integrated Remote System Controller and accompanying HP Any ware Remote System Management software is compatible with all operating systems.

Operating Temperature	Max ambient temperature: 55°C
-----------------------	-------------------------------

1. HP Any ware Remote System Controller only. Dimensions do not include PCIe bracket or cables.
2. Weight does not include cables, half-height bracket, or packaging, and is only the HP Any ware Integrated Remote System Controller with the full-height PCIe bracket installed by default.
3. The PCIe form factor is purely for power and mechanical retention. No host PCIe signals are used to communicate with the HP Any ware Integrated Remote System Controller as a PCIe device. It is compatible in any generation of PCIe slot as long as the card will physically fit.
4. The latest BIOS update is required so the host provides power to the HP Any ware Integrated Remote System Controller in all host power states.
5. By installing the HP Z4/Z6/Z8 G4 / Z Central 4R Remote System Controller Cable Adapter (7K6E5AA), power will be stolen from the front USB ports on the host. This was necessary to be able to power the Remote System Controllers in all power states, and it leaves the front USB ports unpowered and unusable.

Comparison Between the Remote System Controller and Integrated Remote System Controller

HP Any ware Remote System Controller	HP Any ware Integrated Remote System Controller
<ul style="list-style-type: none"> • Sits external to the host device (no PCIe slot required) • Full feature support with Z4, Z6, Z8, Z8 Fury G5 or beyond and Z2 Mini, Z2 Small Form Factor and Z2 Tower G9 or beyond • Compatible with the Z2 Mini G9 • Not compatible with the HP Engage Flex Pro G2 and HP Engage Flex Pro C G2 • Supports passthrough ethernet • Universal KVM compatibility with all computers (PC or Mac) <ul style="list-style-type: none"> ◦ Requires external power supply when used with non-Z by HP Workstations ◦ Standard USB and Mini DisplayPort™ recognized by any device 	<ul style="list-style-type: none"> • Sits internal to the host device (PCIe slot required) • Full feature support with Z4, Z6, Z8, Z8 Fury G5 or beyond and Z2 Small Form Factor and Z2 Tower G9 or beyond • Not compatible with the Z2 Mini G9 • Compatible with the HP Engage Flex Pro G2 and HP Engage Flex Pro C G2 • Does not support passthrough ethernet • Limited support as a universal KVM (not recommended for use with non-Z by HP Workstations)

After Market Option Kits

7K6D7AA – HP Any ware Remote System Controller



What's In the Box	<ul style="list-style-type: none"> • HP Any ware Remote System Controller • Main Board Adapter with DB9 adapter bracket • USB Type-A to Type-A cable (1 meter) • DisplayPort™ to Mini DisplayPort™ cable (1 meter) • CAT 5E ethernet cable (1 meter) • External Power and Signal Interface cable (1 meter) • Internal Power and Signal Interface cable (38 centimeters) • Quick Start Guide
For Use With	<ul style="list-style-type: none"> • HP Z2 Small Form Factor G9 • HP Z2 Tower G9 • HP Z4 G5 • HP Z6 G5 • HP Z8 G5 • HP Z8 Fury G5 • HP Z4 G4, HP Z6 G4, HP Z8 G4, and HP Z Central 4R with the addition of 7K6E5AA1

1. By installing the HP Z4/Z6/Z8 G4 / Z Central 4R Remote System Controller Cable Adapter (7K6E5AA), power will
the front USB ports on the host. This was necessary to be able to power the Remote System Controllers in all power states, and it leaves the front USB ports unpowered and unusable.

7K7N2AA – HP Any ware Remote System Controller for Universal KVM



What's In the Box	<ul style="list-style-type: none"> • HP Any ware Remote System Controller • USB Type-A to Type-A cable (1 meter) • DisplayPort™ to Mini DisplayPort™ cable (1 meter) • CAT 5E ethernet cable (1 meter) • Lite On AC to DC Adapter Model: PA-1041-81 • Quick Start Guide
For Use With	<ul style="list-style-type: none"> • Any non-Z by HP compute device

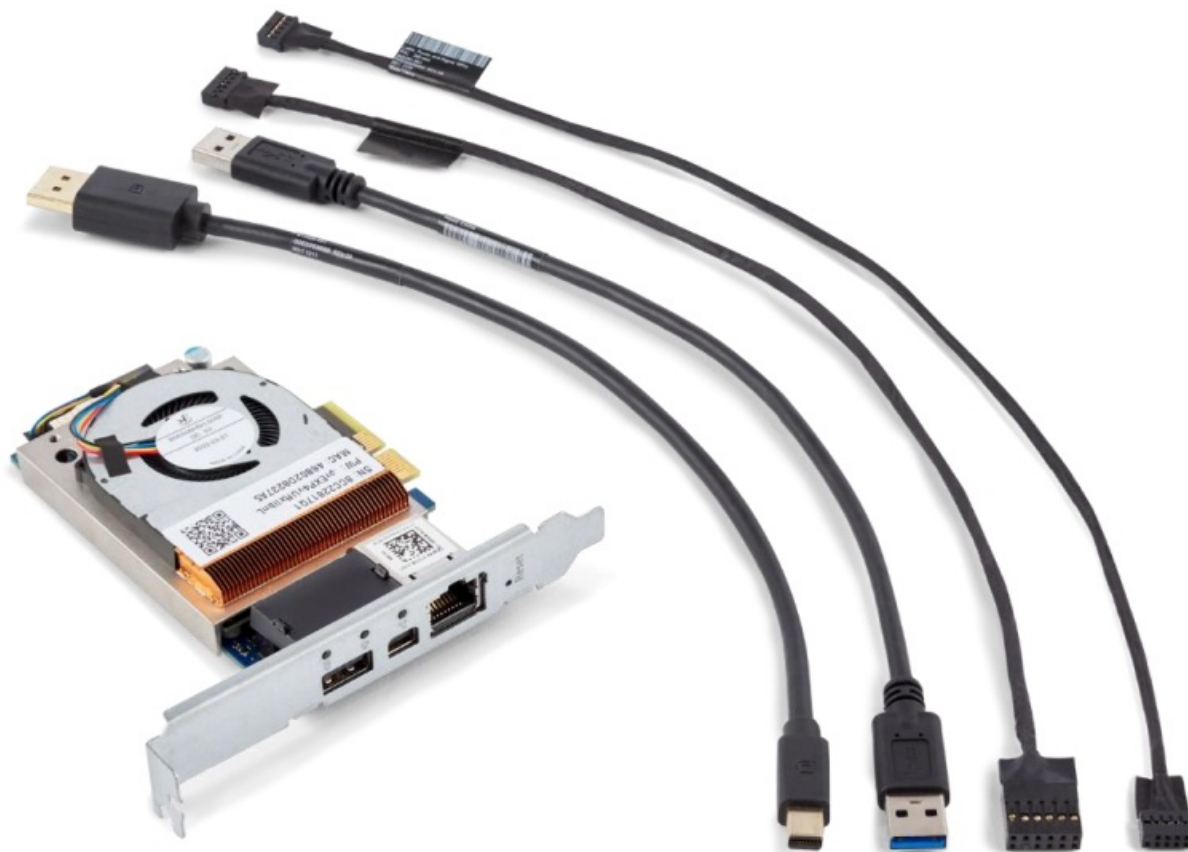
7K6E4AA – HP Z2 Mini Remote System Controller



What's In the Box	<ul style="list-style-type: none"> • HP Any ware Remote System Controller • Main Board Adapter with Flex Port adapter bracket • USB Type-A to Type-A cable (30 centimeter) • DisplayPort™ to Mini DisplayPort™ cable (30 centimeter) • CAT 5E ethernet cable (30 centimeter) • Power and Signal 10pin RSC cables for Z2 Mini
--------------------------	--

	<ul style="list-style-type: none"> • Quick Start Guide
For Use With	<ul style="list-style-type: none"> • HP Z2 Mini G9

7K6D9AA – HP Any ware Integrated Remote System Controller

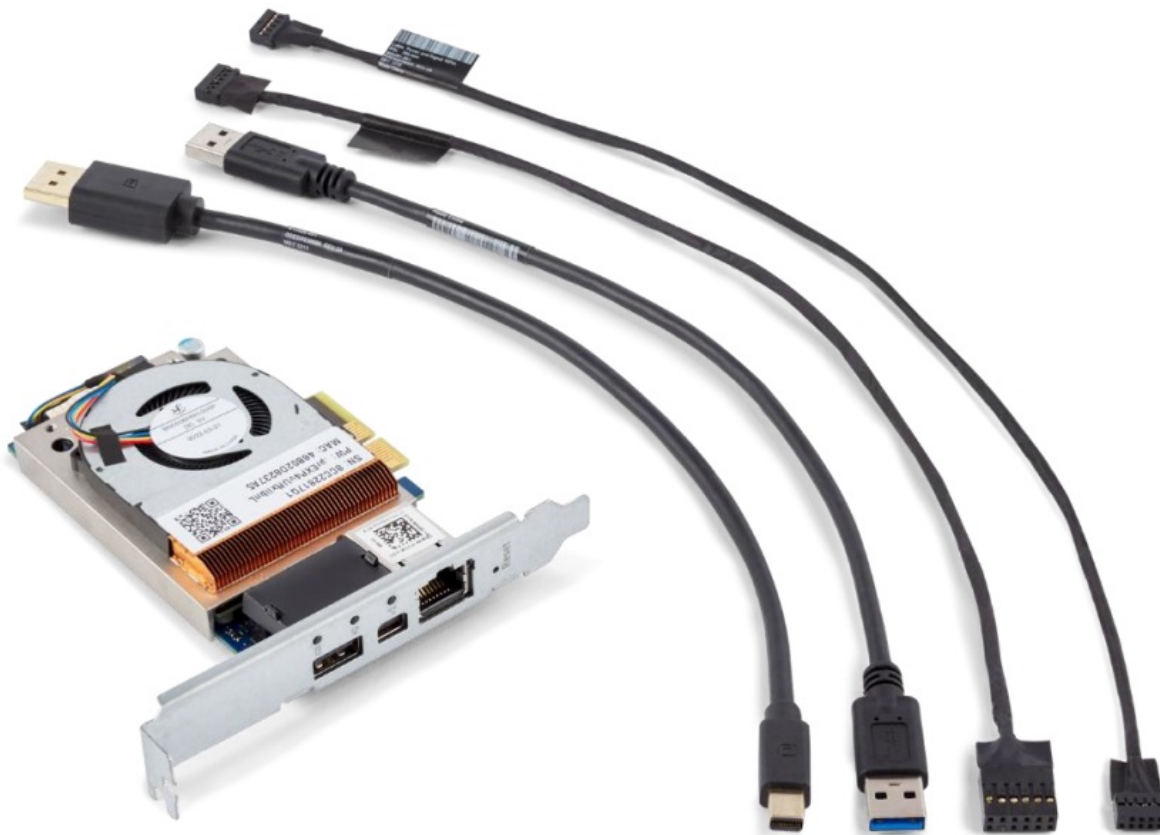


What's In the Box	<ul style="list-style-type: none">• HP Any ware Integrated Remote System Controller with PCIe Half-Height Bracket and QR Code Label with unique identifiers and default password• External USB Type-A to Type-A cable (30 centimeters)• Internal USB cable (37 centimeters)• DisplayPort™ to Mini DisplayPort™ cable (30 centimeters)• Internal Power and Signal Interface cable (38 centimeters)• Quick Start Guide
For Use With	<ul style="list-style-type: none">• HP Z2 Small Form Factor G9• HP Z2 Tower G9• HP Z4 G5• HP Z6 G5• HP Z8 G5• HP Z8 Fury G5• HP Z4 G4, HP Z6 G4, HP Z8 G4, and HP Z Central 4R with the addition of 7K6E5AA1

1. By installing the HP Z4/Z6/Z8 G4 / Z Central 4R Remote System Controller Cable Adapter (7K6E5AA), power

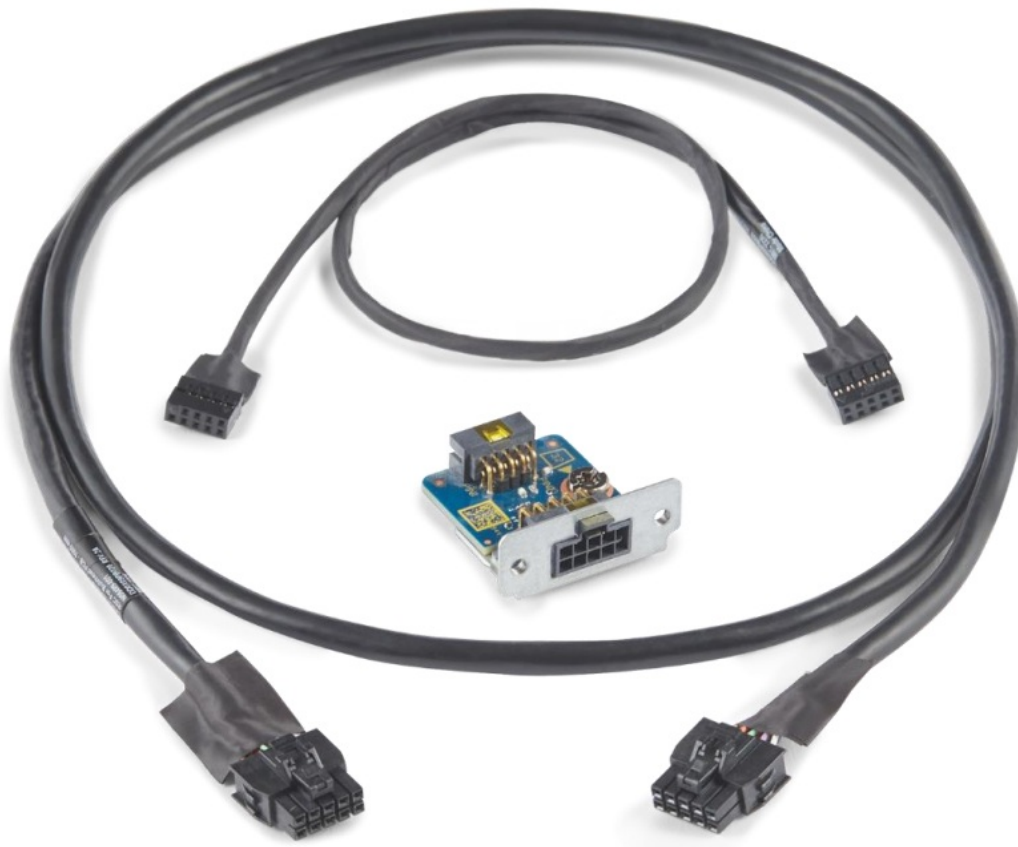
will be stolen from the front USB ports on the host. This was necessary to be able to power the Remote System Controllers in all power states, and it leaves the front USB ports unpowered and unusable.

9B141AA– HP Any ware Integrated Flex Pro Remote System Controller



What's In the Box	<ul style="list-style-type: none">• HP Any ware Integrated Remote System Controller with PCIe Half-Height Bracket and QR Code Label with unique identifiers and default password• External USB Type-A to Type-A cable (30 centimeters)• DisplayPort to Mini DisplayPort cable (30 centimeters)• Internal Power and Signal Interface cable (120 millimeters)• Quick Start Guide
For Use With	<ul style="list-style-type: none">• HP Engage Flex Pro G2• HP Engage Flex Pro C G2

7K6D8AA – HP Any ware Remote System Controller Main Board Adapter



What's In the Box	<ul style="list-style-type: none">• Main Board Adapter with DB9 adapter bracket1• External Power and Signal Interface cable (1 meter)• Internal Power and Signal Interface cable (38 centimeters)
For Use With	<ul style="list-style-type: none">• HP Z2 Small Form Factor G9• HP Z2 Tower G9• HP Z4 G5• HP Z6 G5• HP Z8 G5• HP Z8 Fury G5• HP Z4 G4, HP Z6 G4, HP Z8 G4, and HP Z Central 4R with the addition of 7K6E5AA2

1. Main Board Adapter max ambient temperature: 65°C.
2. By installing the HP Z4/Z6/Z8 G4 / Z Central 4R Remote System Controller Cable Adapter (7K6E5AA), power will be stolen from the front USB ports on the host. This was necessary to be able to power the Remote System Controllers in all power states, and it leaves the front USB ports unpowered and unusable.

7K6E5AA – HP Z4/Z6/Z8 G4 / ZCentral 4R Remote System Controller Cable Adapter



What's In the Box	<ul style="list-style-type: none"> • PCIe Full-Height Bracket for the Main Board Adapter • HP Z4/Z6/Z8 G4 / Z Central 4R Remote System Controller Cable Adapter • Power and Signal 10pin RSC cable
For Use With^{1,2}	<ul style="list-style-type: none"> • HP Z4 G4 • HP Z6 G4 • HP Z8 G4 • HP Z Central 4R

1. The latest BIOS update is required so the host provides power to the HP Any ware Integrated Remote System Controller in all host power states.
2. By installing the HP Z4/Z6/Z8 G4 / Z Central 4R Remote System Controller Cable Adapter, power will be stolen from the front USB ports on the host. This was necessary to be able to power the Remote System Controllers in all power states, and it leaves the front USB ports unpowered and unusable.

Manageability Features

The below list is a high-level summary of the manageability features that the HP Any ware (Integrated) Remote System Controller enables when paired with Z2 platforms G9 and beyond, and Z4, Z6, Z8, or Z8 Fury G5 and beyond. For an understanding of how these features differ when paired with other compute devices, see the "Feature Comparison by Platform" chart in the 'Technical Specifications' section. New features are consistently added to the HP Any ware (Integrated) Remote System Controller through either the embedded software or HP Any ware Remote System Management software (see 'Software Overview' section), so this list may not represent all of the capabilities.

- IP KVM Remote Console (including pre-boot access)
- Direct Communication with BIOS
- Power Button Control
- Hardware Alerts
- Hardware System Inventory
- BareMetal Imaging

- Firmware Updates
- Remote Virtual Storage
- Agentless Management

After Market Option Kits

Introduction

There are three primary ways to interface with the HP Any ware Remote System Controller and HP Any ware Integrated Remote System Controller:

Overview

1. Embedded software
2. HP Any ware Remote System Management
3. Redfish® API

The following section will outline these three methods and give basic instructions. For further information, please seek out software specific user guides online.

Embedded Software

Each HP Any ware (Integrated) Remote System Controller has a web server that can be accessed directly from a web browser. This method of interfacing with the hardware is for managing one device at a time and can be viewed as containerized micro-services running on an Ubuntu 18.04 Linux Kernel.

To access the embedded software, it is required to be on the same network that the HP Any ware (Integrated) Remote System Controller is assigned to.

Instructions for Accessing the Embedded Software

1. Open a web browser. Any web browser will work, but the experience is optimized for Google Chrome.
2. Enter either the IP address or serial number for the HP Any ware (Integrated) Remote System Controller being accessed.
 - a. For the HP Any ware Remote System Controller, the IP address will be displayed on the front LCD screen. The serial number can be found on the underside of the Remote System Controller.
 - b. For the HP Any ware Integrated Remote System Controller, the serial number can be found on the sticker on the top side of the card.
3. Login to the embedded software using the default username “Admin” and the default password for the HP Any ware (Integrated) Remote System Controller.
 - a. For the HP Any ware Remote System Controller, the password can be found on the underside of the Remote System Controller.
 - b. For the HP Any ware Integrated Remote System Controller, the password can be found on the sticker on the top side of the card.

NOTE: The password can be changed from the embedded software UI after the first login.

HP Any ware Remote System Management

The HP Any ware Remote System Management is a subscription, public-cloud software that enables fleet management from a single console. It is planned to be commercially available in late 2023, but alpha testing is available for those interested.

Redfish® API

Redfish® is a communication protocol usually used for the management of servers. The HP Any ware (Integrated) Remote System Controller uses this same communication protocol so it can fit seamlessly within server environments and take advantage of many of the same software scripts that are used in server management. For more information, please seek out Redfish® API documentation online.

For more information, please visit DMTF's Redfish® site:

<https://www.dmtf.org/standards/redfish>

Technical Specifications

HP Any ware Remote System Controller – Technical Specifications

System-on-Module (Some) NVIDIA® Jetson Nano

CPU Quad-core ARM Cortex-A57 MP Core processor

GPU NVIDIA® Maxwell with 128 NVIDIA® CUDA® cores

Memory 4GB 64-bit LPDDR4, 1600MHz 25.6 GB/s

Storage 16GB eMMC 5.11

Upgradeable Storage used Slot (SD4.0)2

Ethernet 10/100/1000Mbps (all ports)

maps Input 1920×1200 60Fps

USB USB3.1G1 (5Gbps)

TPM TPM2.0 SLB9672

Power ~4W (Idle)/~17W (Max)

Power Supply Power supply is only included with the HP Any ware Remote System Controller for Universal KVM (7K7N2AA) AMO kit, to provide power to the Remote System Controller when power from the host is not available:

LiteOn AC to DC Adapter Model: PA-1041-81

Input: 100-240V AC, 50/60Hz 1.2A1 (Cord Length 6 feet or 1.83 meters)

Output: 12.0V DC 3.33A (40.0W2) (Cord Length 4 feet or 1.2 meters)3

Thermal Active Cooling

Operating Max ambient temperature with AC adapter: 40°C

Temperature Max ambient temperature without AC adapter: 50°C

1. Virtual Media storage capacity is 4.7GB.
2. For later expandable storage.
3. The AC power cord is localized to provide compatibility with most countries.

HP Any ware Integrated Remote System Controller – Technical Specifications

System-on-Module (Some) NVIDIA® Jetson Nano

CPU Quad-core ARM Cortex-A57 MP Core processor

GPU NVIDIA® Maxwell with 128 NVIDIA® CUDA® cores

Memory 4GB 64-bit LPDDR4, 1600MHz 25.6 GB/s

Storage 16 GB eMMC 5.11

Upgradeable Storage used Slot (SD4.0)2

Ethernet 10/100/1000Mbps

maps Input 1920×1200 60Fps

USB USB3.1G1 (5Gbps)

TPM TPM2.0 SLB9672
Power ~4W (Idle)/~17W (Max)
Thermal Active Cooling
Operating Temperature Max ambient temperature: 55°C

- 1. Virtual Media storage capacity is 4.7GB.
- 2. For later expandable storage.

Feature Comparison by Platform

Feature	Z4, Z6, Z8, Z8 Fury G5+ Z2 G9+ HP Engage Flex Pro G2 & Flex Pro C G2	Z4, Z6, Z8 G4 Z Central 4R1	Non-Z Compute Devices
---------	---	------------------------------------	-----------------------

Technical Specifications

Power Button Control	●	●	
Direct Communication with BIOS	●		
BareMetal Imaging	●	Manual	Manual
Remote Virtual Storage	●	●	●
IP KVM2	●	●	●
HW System Inventory	●		
Hardware Alerts	●	Partial3	
HP Any ware (Integrated) Remote System Controller Firmware Updates	●	●	●

- 1. By installing the HP Z4/Z6/Z8 G4 / Z Central 4R Remote System Controller Cable Adapter (7K6E5AA), power will be stolen from the front USB ports on the host. This was necessary to be able to power the Remote System Controllers in all power states, and it leaves the front USB ports unpowered and unusable.
- 2. IP KVM refers to the ability to remotely interface with the host machine with keyboard, monitor and mouse control over a network.

3. By being able to communicate directly with the BIOS when paired with Z2 platforms G9 and beyond, or Z4, Z6, Z8, and Z8 Fury G5 and beyond, the HP Any ware (Integrated) Remote System Controller is able to reactively alert users of over 200 different hardware events. When paired with the Z4 G4, Z6 G4, Z8 G4, or Z Central 4R, the hardware events that the HP Any ware (Integrated) Remote System Controller is able to detect is limited only to events that prevent the system from booting.

Security Features

- Zero Trust Model: All communication is over HTTPS with scion -bossed tokens, multi-factor authentication, and secure web sockets.
- Trusted Platform Module: The HP Any ware (Integrated) Remote System Controller uses the same TPM 2.0 chip that Z by HP Desktop Workstations use. They are Common Criteria EAL4+ certified.
- Full-Disk Encryption: All data is encrypted at rest, using secure boot to ensure that only HP-signed bits can be loaded.
- HP Labs Security Libraries: The HP Any ware (Integrated) Remote System Controller and HP Any ware Remote System Management utilizes libraries developed by HP Labs to enable the highest level of encryption with redundancy and futureproofing.
- Physical Security: The HP Any ware Remote System Controller features a Kensington lock slot.

Service, Support, and Warranty

On-site Warranty and Service1 : Warranty term is determined by the purchase path. When bundled CTO with a Z by HP Workstation or select HP Engage Retail System, the HP Any ware (Integrated) Remote System Controller will absorb the warranty of the Workstation. When purchased as an after market option, the HP Any ware (Integrated) Remote System Controller has a one-year, limited warranty. Service offering delivers on-site, next business-day2 service for parts and labor and includes free telephone support3 8am – 5pm. Global coverage ensures that any product purchased in one country and transferred to another, non restricted country will remain fully covered under the original warranty and service offering. 24/7operation will not void the HP warranty.

Note 1: Terms and conditions may vary by country. Certain restrictions and exclusions apply

Note 2: On-site service may be provided pursuant to a service contract between HP and an authorized HP third-party provider, and is not available in certain countries. Global service response times are based on commercially reasonable best effort and may vary by country.

Note 3: Technical telephone support applies only to HP-configured, HP and HP-qualified, third-party hardware and software.

Toll-free calling and 24x7 support service may not be available in some countries.

HP Care Pack Services extend service contracts beyond the standard warranties. Service starts from date of hardware purchase.

To choose the right level of service for your HP product, use the HP Care Pack Services Lookup Tool at:

Technical Specifications

<http://www.hp.com/go/lookuptool>. Service levels and response times for HP Care Packs may vary depending on your geographic location.

Certifications and Compliance

Environmental Sustainability questions concerning:

- Ecolabels (EPEAT, TCO, etc.)
- ENERGY STAR, California Energy Commission (CEC)
- Compliance with Environmental legislation (EU ErP, China CECP, EU RoHS, and other countries)
- Supply Chain Social Environmental Responsibility (SER) (conflict mineral; human rights, etc.)
- Product specific environmental features (material content, packaging content, recycled content, etc.)
- China Energy Label (CEL)

Please contact sustainability@hp.com
 For country specific Regulatory Compliance approval documents or Regulatory and Safety questions concerning:

- Declarations of Conformity (for self-service, go to https://www.hp.com/uk/en/certifications/technical/regulationscertificates.html?jumpid=ex_r135_uk/en/any/corp/hpukmu_chev/certificates)
- GS Certificates
- Product Safety Certificates (UL, CB, BIS, etc.)
- EMC Certificates, Declarations of Conformity, or Certificates of Conformity (CE, FCC, ICES, etc.)
- CCC Certificates
- Ergonomics

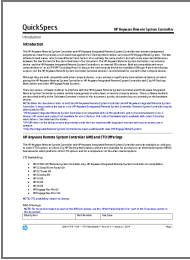
Please contact techregshelp@hp.com

Date of change:	Version History :		Description of change:
January 1, 2024	From v1 to v2	Changed	Introduction, HP Any ware Remote System Controller AMO and CTO Offerings, HP Any ware Integrated Flex Pro Remote System Controller, Feature Comparison b y Platform, Service, Support, and Warranty sections

© 2023 HP Development Company, L.P. The information contained herein is subject to change without notice. The only warranties for HP products and services are set forth in the express warranty statements accompanying such products and services. Nothing herein should be construed as constituting an additional warranty. HP shall not be liable for technical or editorial errors or omissions contained herein. NVIDIA and the NVIDIA logo are trademarks and/or registered trademarks of NVIDIA Corporation in the U.S. and other countries. SD is a trademark or registered trademark of SD-3C in the United States, other countries, or both. DisplayPort™ and the DisplayPort™ logo are trademarks owned by the Video Electronics Standards Association (VESA®) in the United States and other countries. USB Type-C® and USB-C® are trademarks of USB Implementers Forum.



Documents / Resources

	<p>hp C08611076 Anyware Remote Controller System [pdf] User Guide</p> <p>C08611076, C08611076 Anyware Remote Controller System, Anyware Remote Controller System, Remote Controller System, Controller System, System</p>
---	---

References

- [hp HP | Care Pack Central](#)
- [REDFISH | DMTF](#)
- [User Manual](#)

[Manuals+](#), [Privacy Policy](#)

This website is an independent publication and is neither affiliated with nor endorsed by any of the trademark owners. The "Bluetooth®" word mark and logos are registered trademarks owned by Bluetooth SIG, Inc. The "Wi-Fi®" word mark and logos are registered trademarks owned by the Wi-Fi Alliance. Any use of these marks on this website does not imply any affiliation with or endorsement.