



---

[Home](#) » [HP](#) » **hp B15JMA Stapler Stacker Finisher Instruction Manual** 

**Contents** [ [hide](#) ]

- [1 hp B15JMA Stapler Stacker Finisher](#)
- [2 Product Usage Instructions](#)
- [3 USING INSTRUCTION](#)
- [4 Frequently Asked Questions](#)
- [5 Documents / Resources](#)
  - [5.1 References](#)



## hp B15JMA Stapler Stacker Finisher



### **Product Specifications:**

- **Model:** B15JMA
- **Function:** Staple unit installation
- **Color:** Green
- **Manufacturer:** HP

### **Product Usage Instructions**

#### **Step 1:** Moving the Staple Unit to Installation Position

Rotate the green wheel clockwise 10 times to position the staple unit for installation.

#### **Step 2:** Rotating the Green Wheel

Rotate the green wheel counter-clockwise 10 times once the cartridge slot is visible.

#### **Step 3:** Installing Staple Cartridge

Hold the green wheel firmly while installing the staple cartridge.

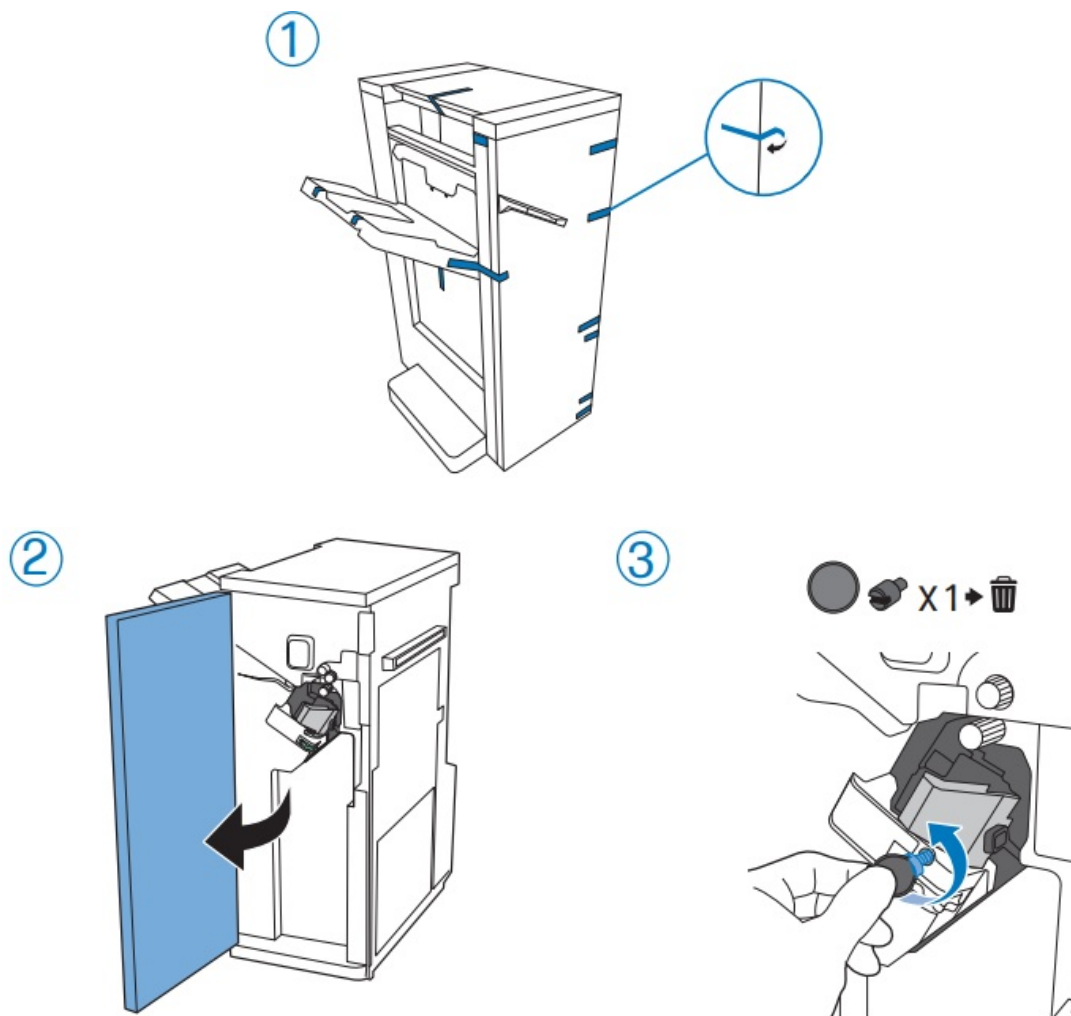
#### **Step 4:** Unlocking Finisher and Printer

Release the locking mechanism to unlock the Finisher and Printer. Pull out the locking handle as demonstrated.

## MORE INFORMATION

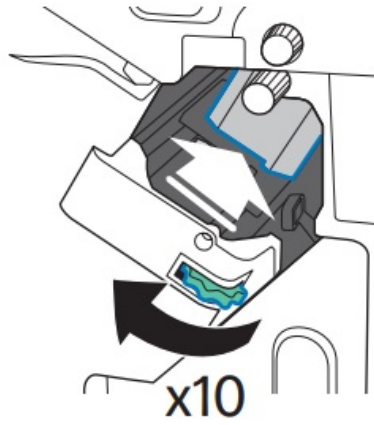


## USING INSTRUCTION



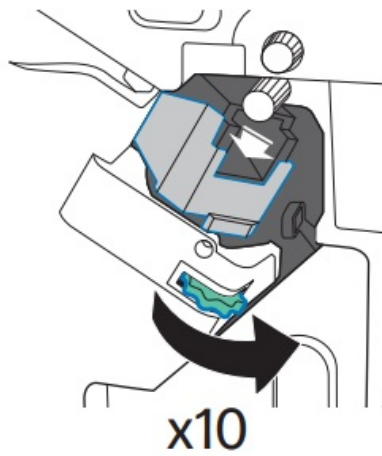
Rotate the green Wheel clockwise 10 times to move the staple unit to the installation position.

④



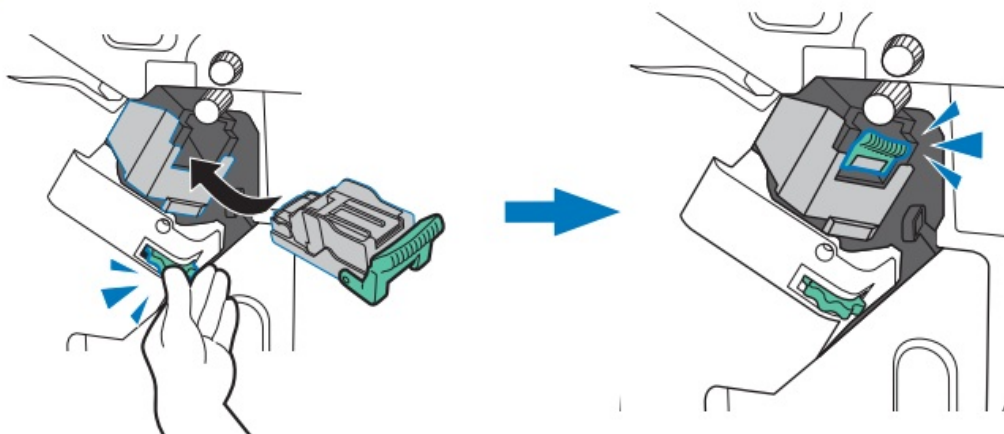
Once the cartridge slot is visible, rotate the green wheel counter-clockwise 10 times.

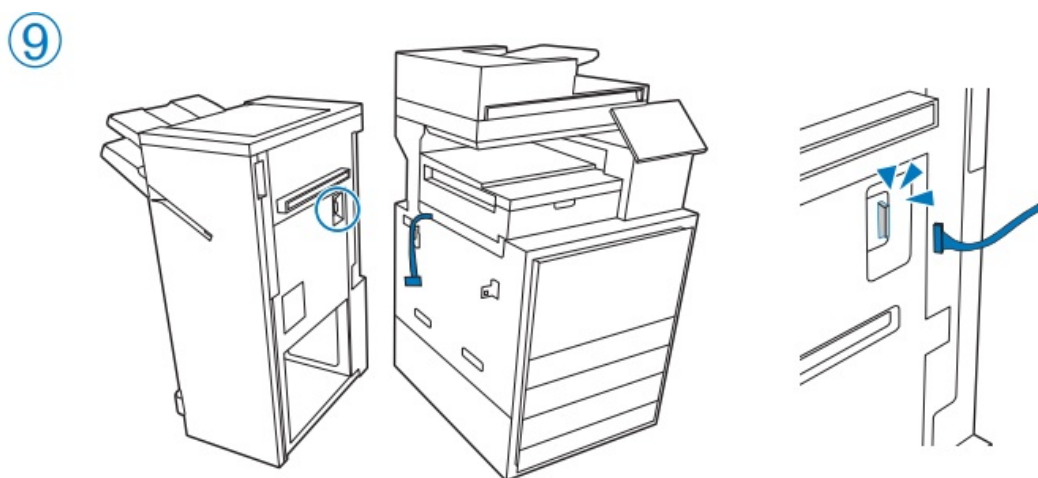
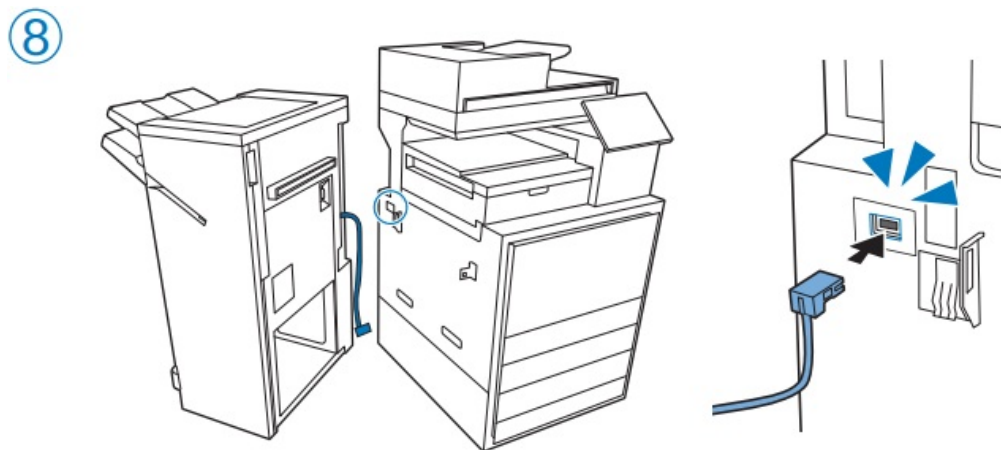
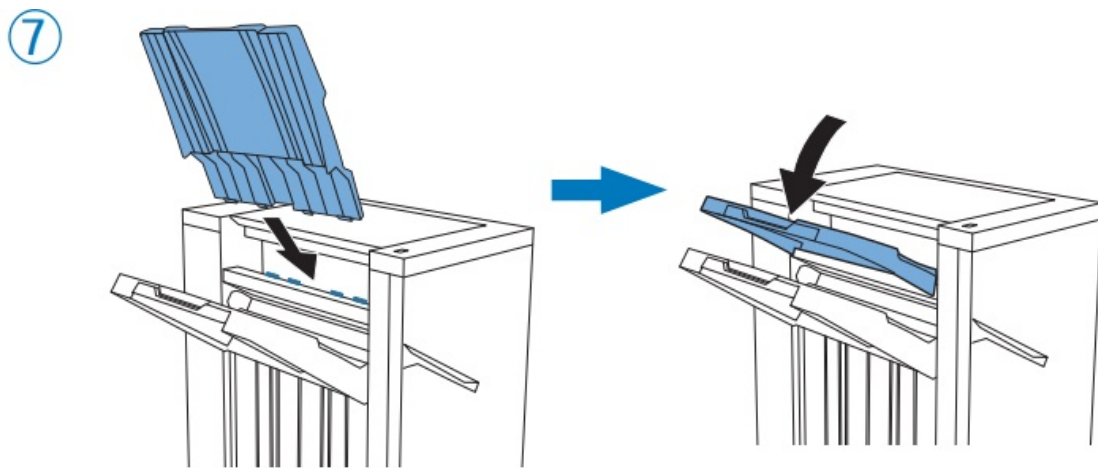
⑤



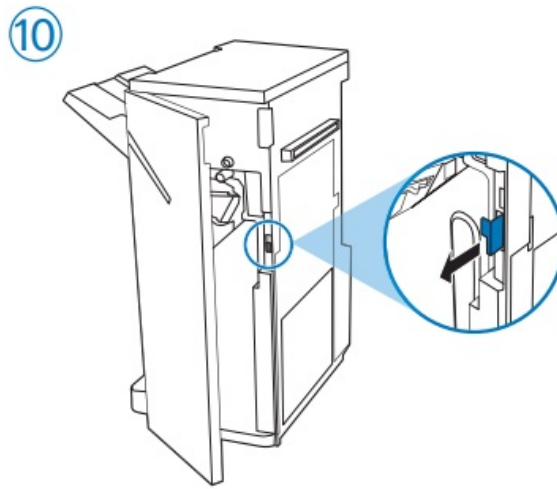
Hold the green wheel while installing the staple cartridge.

⑥

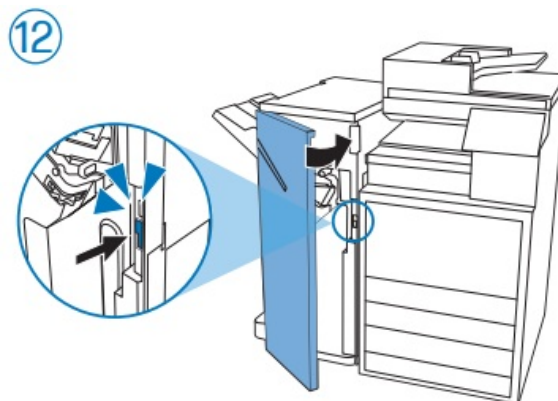
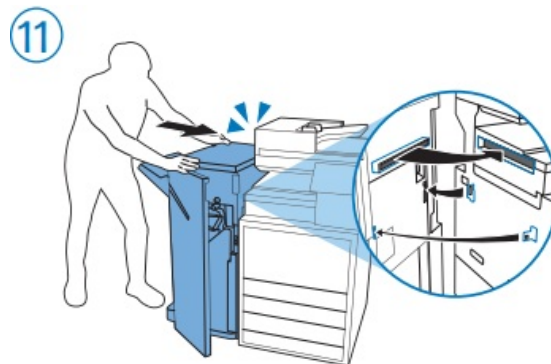




Unlock the Finisher and Printer by releasing the locking mechanism. Pull out the locking handle as shown here.



Firmly push the Finisher and Printer together until the locking mechanism clicks into place at all three marked locations.



You can change the settings for Job Offset in the menu below:

Setting > Manage Stapler/Stacker > Job Offset. (Default:

Off) Job Offset : Separates print jobs by offsetting their placement in the output tray for easier organization.

Restriction of hazardous substances (India)

This product, as well as its related consumables and spares, complies with the reduction in hazardous substances provisions of the "India E-waste Rule 2016." It does not contain

lead, mercury, hexavalent chromium, polybrominated biphenyls or polybrominated diphenyl ethers in concentrations exceeding 0.1 weight % and 0.01 weight % for cadmium, except where allowed pursuant to the exemptions set in Schedule 2 of the Rule.



© Copyright 2025 HP Development Company, L.P.

## Frequently Asked Questions

How many times should I rotate the green wheel to move the staple unit?

Rotate the green wheel clockwise 10 times to position the staple unit for installation.

What should I do once the cartridge slot is visible?

Rotate the green wheel counter-clockwise 10 times.


How should I handle the green wheel while installing the staple cartridge?

Hold the green wheel firmly during the installation process.

How do I unlock the Finisher and Printer?

Release the locking mechanism and pull out the locking handle to unlock them.


## Documents / Resources




[hp B15JMA Stapler Stacker Finisher \[pdf\]](#) Instruction Manual  
B15JMA, X1, B15JMA Stapler Stacker Finisher, Stapler Stacker Finisher, Stacker Finisher, Finisher

References

- [User Manual](#)

 B15JMA, B15JMA Stapler Stacker Finisher, Finisher, HP, Stacker Finisher, Stapler Stacker Finisher,

 HP   X1

Leave a comment

Your email address will not be published. Required fields are marked \*

Comment \*

Name

Email

Website

☐ Save my name, email, and website in this browser for the next time I comment.



**Post Comment**

## Search:

e.g. whirlpool wrf535swhz

**Search**

[Manuals+](#) | [Upload](#) | [Deep Search](#) | [Privacy Policy](#) | [@manuals.plus](#) | [YouTube](#)

This website is an independent publication and is neither affiliated with nor endorsed by any of the trademark owners. The "Bluetooth®" word mark and logos are registered trademarks owned by Bluetooth SIG, Inc. The "Wi-Fi®" word mark and logos are registered trademarks owned by the Wi-Fi Alliance. Any use of these marks on this website does not imply any affiliation with or endorsement.