



hp All In One PC Desktop Computer User Guide

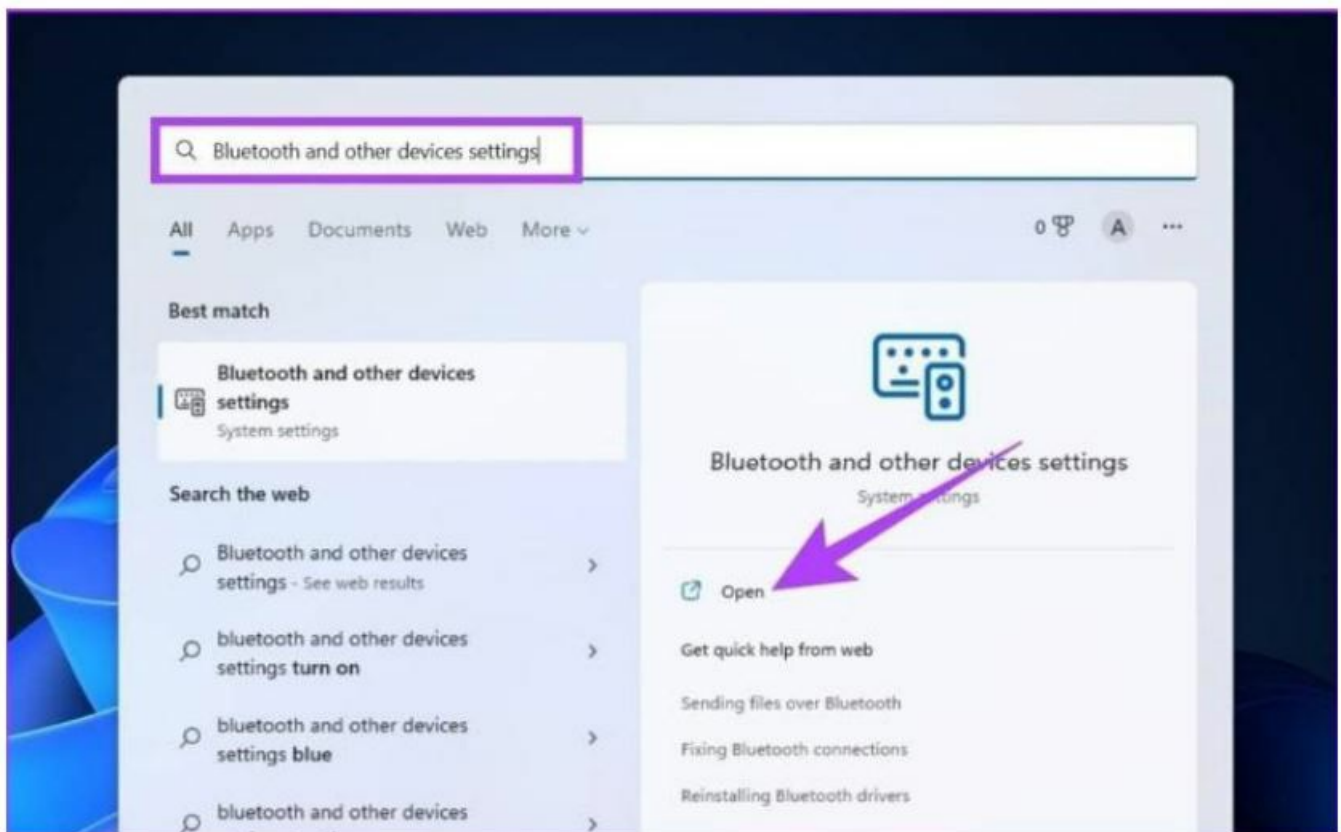
[Home](#) » [HP](#) » hp All In One PC Desktop Computer User Guide 

hp All In One PC Desktop
Computer User Guide

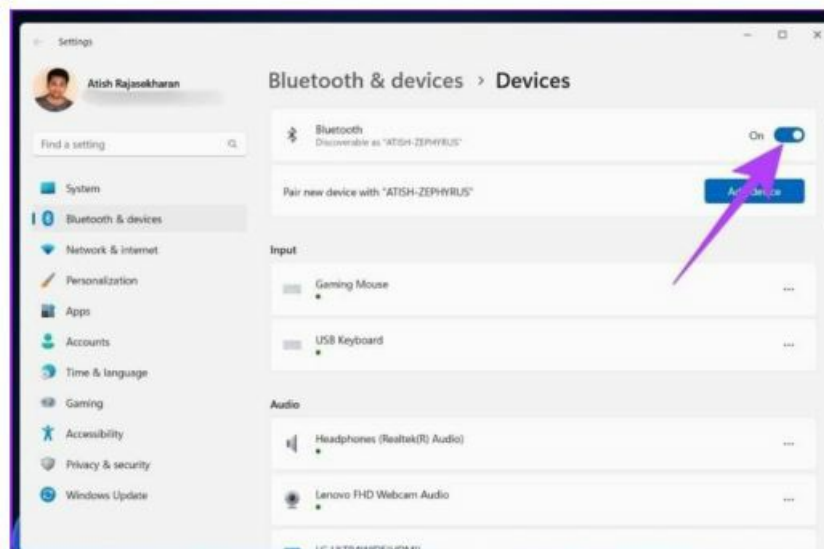
How to connect with the Bluetooth?

Method 1

Step 1: Press the Windows key on your keyboard to open the Start menu, type “Bluetooth and other device settings,” and click Open.



Step 2: Now, turn on the Bluetooth switch.

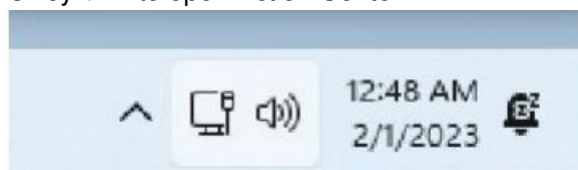


Step 3: Bluetooth is turned on on your Windows 11 PC.

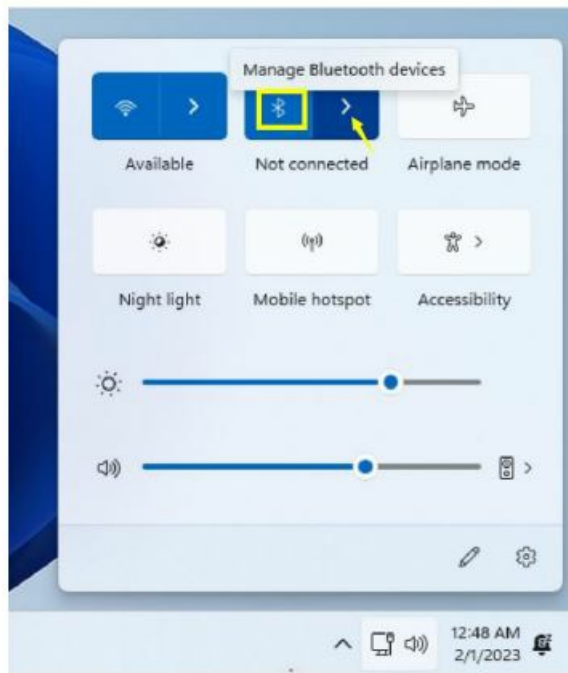
Method 2

Step 1: Click the shortcut setting area in the lower right corner of the screen to open the operation center.

Tip: You can also press "Windows key + A" to open Action Center.



Step 2: Click on the Bluetooth icon and it will turn on immediately.



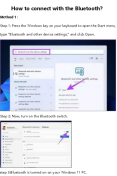
Step 3: Then you can pair your device without any problem.

Contents

1 Documents / Resources

1.1 References

Documents / Resources

	<p>hp All In One PC Desktop Computer [pdf] User Guide</p> <p>All In One PC Desktop Computer, PC Desktop Computer, Desktop Computer, Computer</p>
---	--

References

- [User Manual](#)