



hp 6100e Series All In One Printer User Guide

[Home](#) » [HP](#) » hp 6100e Series All In One Printer User Guide 



Reference Information
HP Envy
6100e series

Contents

- [1 Control panel](#)
- [2 Printer features](#)
- [3 Paper information](#)
- [4 Ink information](#)
- [5 Wi-Fi troubleshooting](#)
- [6 Documents / Resources](#)
 - [6.1 References](#)

Control panel

1. Status center

Touch to display printer status.

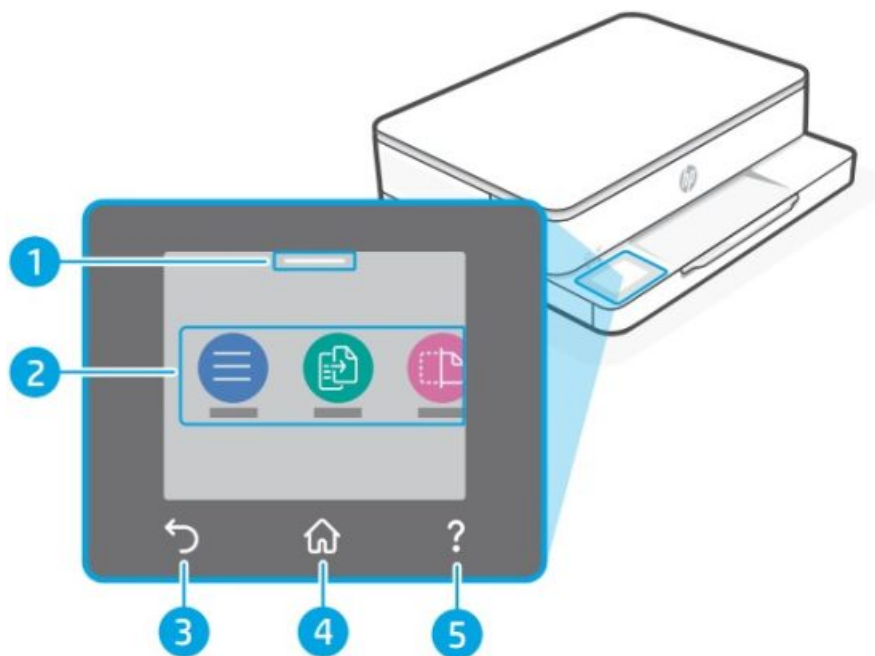
2. Function buttons

Touch to perform common tasks.

3. Back button

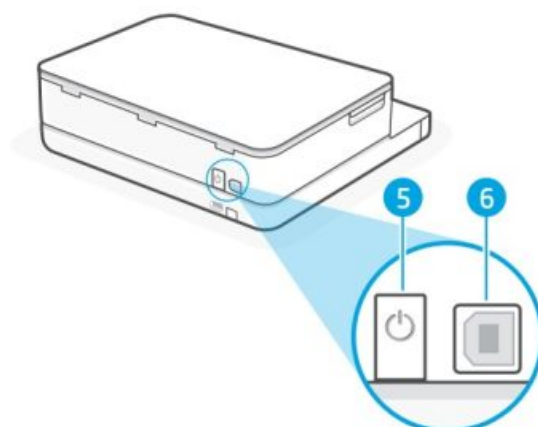
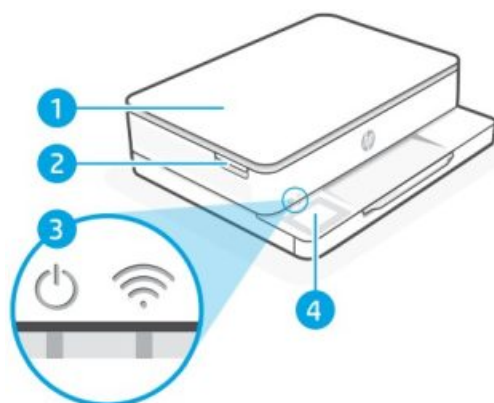
4. Home button

5. Help button



Printer features

1. Scanner
2. Cartridge access door
3. Power light and Wi-Fi light
4. Control panel



5. Power button
6. USB port

Do not use USB for setup



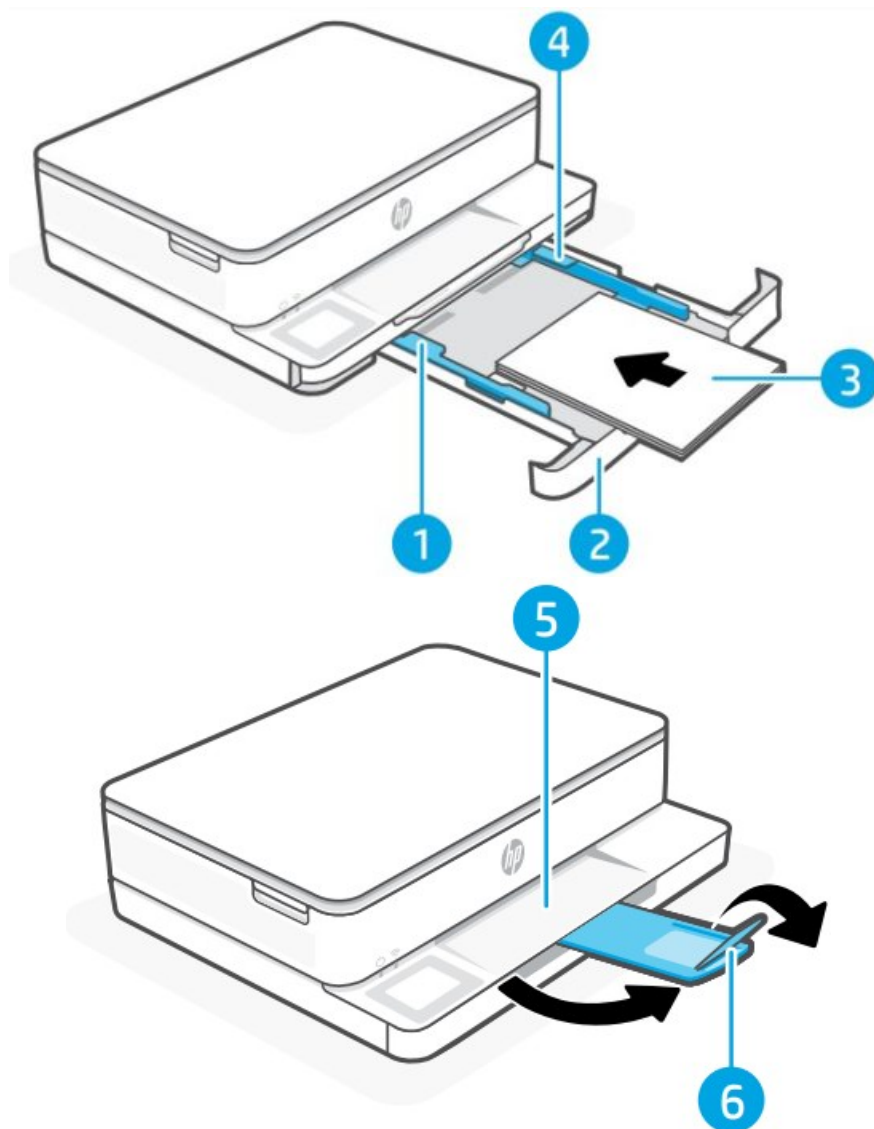
We encourage network connection for this printer. To use all the available features of this printer, complete setup using HP software and an Internet connection. After setup, you can print using a USB cable if needed.

Paper information

1. Paper guide (left side)
2. Input tray
3. Paper

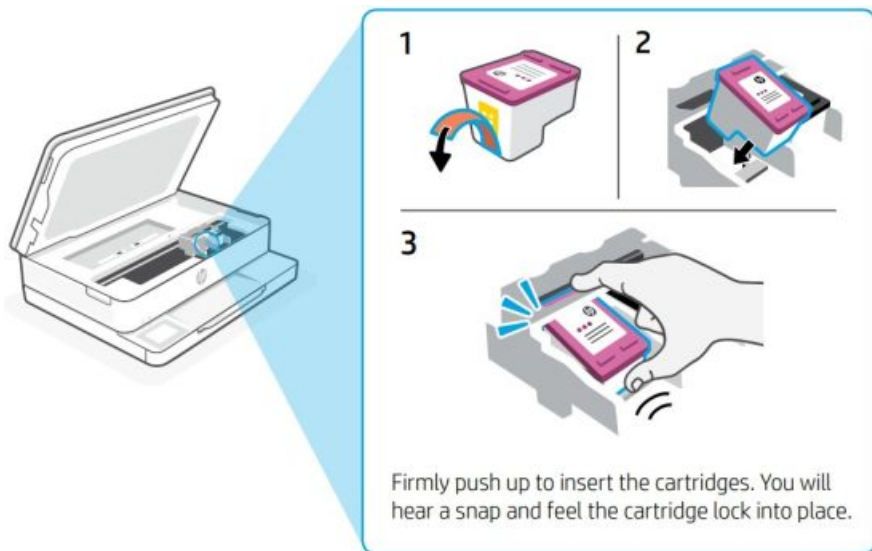
For printer alignment, load A4 or Letter paper.

4. Paper guide (right side)



5. Output tray
6. Output tray extender

Ink information



Note: Use the cartridges included with this printer for initial setup.

Printer software information



https://www.hp.com/start/envy6100e?utm_source=qr&utm_medium=guide

Visit [hp.com/start/envy6100e](https://www.hp.com/start/envy6100e) to install HP software. This software provides basic print and scan drivers and will help you connect the printer to a Wi-Fi network.

Wi-Fi troubleshooting

During initial setup, reset setup mode:

If the blue Wi-Fi light is not blinking, the printer might not be in Wi-Fi setup mode. Check the control panel and select “Resume Setup”, if prompted.



During printer use, reset Wi-Fi:

1. On the control panel, touch Menu > Settings > Network. Scroll to Restore Network Settings and touch Restore.
2. Wait for printer to scan for Wi-Fi networks. Choose your network, enter the password, and connect.
3. If applicable, open HP software and add the printer again.

Other Potential Issues	Solution
Computer or mobile device too far from printer	Move your computer or mobile device closer to the printer. Your device might be out of range of the printer's Wi-Fi signal.
Computer connected to a Virtual Private Network (VPN) or remote work network	Disconnect from a VPN before installing HP software. You can't install apps from the Microsoft Store when connected to a VPN. Connect to the VPN again after finishing printer setup. Note: Consider your location and the security of the Wi-Fi network before disconnecting from a VPN.
Wi-Fi turned off on computer (computer connected by Ethernet)	If your computer is connected by Ethernet, turn on the computer's Wi-Fi while setting up the printer. Disconnect the Ethernet cable temporarily to complete setup over Wi-Fi.
Bluetooth and location services are turned off on your mobile device	If setting up with a mobile device, turn on Bluetooth and location services. This helps the software find your network and printer. Note: Your location is not being determined and no location information is being sent to HP as part of the setup process.

The information contained herein is subject to change without notice.



© Copyright 2024 HP Development Company, L.P.
Microsoft and Windows are either registered trademarks or trademarks of Microsoft Corporation in the United States and/or other countries.

Printed in Thailand



714L5-90004

Documents / Resources

<p>Reference Information Informations de référence Información de referencia</p> <p>HP Envy 6100e series</p>	<p>hp 6100e Series All In One Printer [pdf] User Guide 6152e, 6100e, 6100e Series All In One Printer, 6100e Series, All In One Printer, In One Printer, One Printer, Printer</p>
--	--

References

- hp.com/start/envy6100e
- [User Manual](#)

Manuals+. Privacy Policy

This website is an independent publication and is neither affiliated with nor endorsed by any of the trademark owners. The "Bluetooth®" word mark and logos are registered trademarks owned by Bluetooth SIG, Inc. The "Wi-Fi®" word mark and logos are registered trademarks owned by the Wi-Fi Alliance. Any use of these marks on this website does not imply any affiliation with or endorsement.