



# Hotron R-C-RSN-WHD4 ClearGuard Wireless Automated Toilet Door Switch Set Instruction Manual

[Home](#) » [Hotron](#) » Hotron R-C-RSN-WHD4 ClearGuard Wireless Automated Toilet Door Switch Set Instruction Manual 



## ClearGuard Wireless Automated Toilet Door Switch Set Instruction Manual

Thank you for purchasing the Hotron Clear Guard switch.

The Clear Guard switch is designed to help automate access to public toilets for people who ordinarily would require assistance.

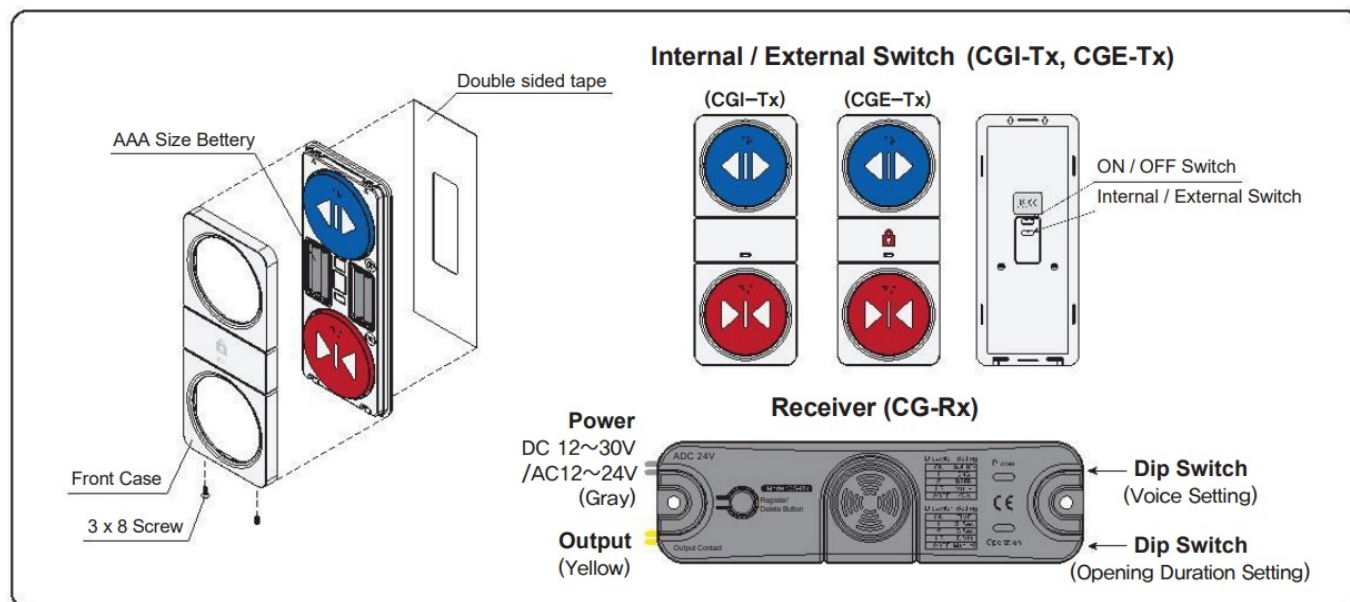
### Contents

- [1 Specifications](#)
- [2 General Information](#)
- [3 Operation Check & Caution](#)
- [4 User Manual](#)
- [5 External Dimensions](#)
- [6 Documents / Resources](#)

## Specifications

Set	Receiver (CG-Rx)		1 EA	
	Internal Switch (CGI-Tx) / External Switch (CGE-Tx)		1 Each	
	Power Connector (Gray)		1 EA	
	Output Contact Point Connector (Yellow)		1 EA	
	Screw		2 EA (3 X 8 size)	
	Double-sided Tape		2 EA	
	Battery		1.5V AAA Size 8 EA	
	Manual		1 Copy	
	HEX Screw driver		1 EA (2mm)	
Spec	Receiver (CG-Rx)		Internal Switch (CGI-Tx) / External Switch (CGE-Tx)	
	Power	DC12-30V/AC12-24V	Rated Frequency	2.455GHz
	Relay Contact Capacity	1A/30VDC, 0.5A/125VDC	Battery	1.5V AAA 4EA Each
	Operating Temp	-20 C-50 (°C)	Operating Temp	-20 (-50
	Product Size	150x43x25mm	Product Size	90x220x15mm
	Current Consumption	Standby: 3CrnA/ Operation: 8 CrnA(for DC24V)	International Protection	I P65

## General Information



## Operation Check & Caution

1. Input DC12~30V/AC12-24V for power supply. Make sure power LED is on.
2. Put AAA size batteries into the internal & external switches.
3. Register the internal & external switches with the receiver.

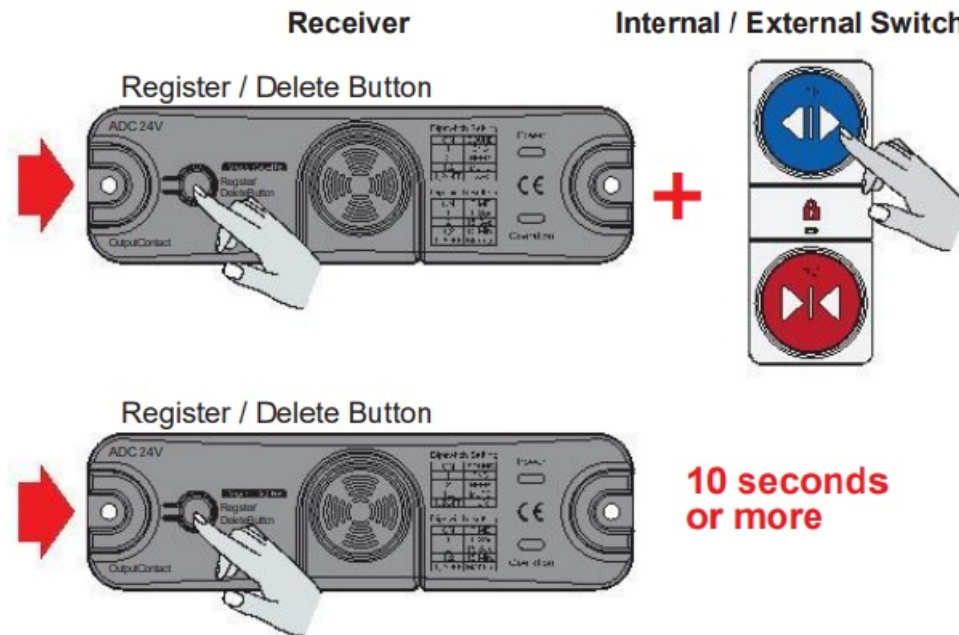
4. Ensure the receiver (CG-Rx) is wired correctly.
5. Immediately change the batteries when aural alert is heard.
6. Although the CGI-Tx and CGE-Tx are IP65 water resistant, excessive water can cause damage to the internal components.

## User Manual

### 1. ID Registration

Ensure the Receiver is powered up and press and hold the open or close button on the Internal or External switch whilst pressing the Register/Delete button on the Receiver.

When pairing is successfully executed, "DOOR IS OPENING" will be heard.



### 2. ID Deletion

Power on the receiver and press the register/delete button for more than 10 seconds.

The buzzer sounds and your ID is deleted successfully.

### 3. Press the blue door open button on the external switch to enter the toilet.





Once inside, press the red door close button to lock the door.

The occupied symbol (Add image of lock here) will illuminate on the external switch if entry is attempted whilst the toilet is occupied.

### 4. Emergency Open

Keep pressing the open button on the external switch until the word "Occupied" is heard 10 times.

### 5. Setting the Door Hold Open Time (Default : Manual)

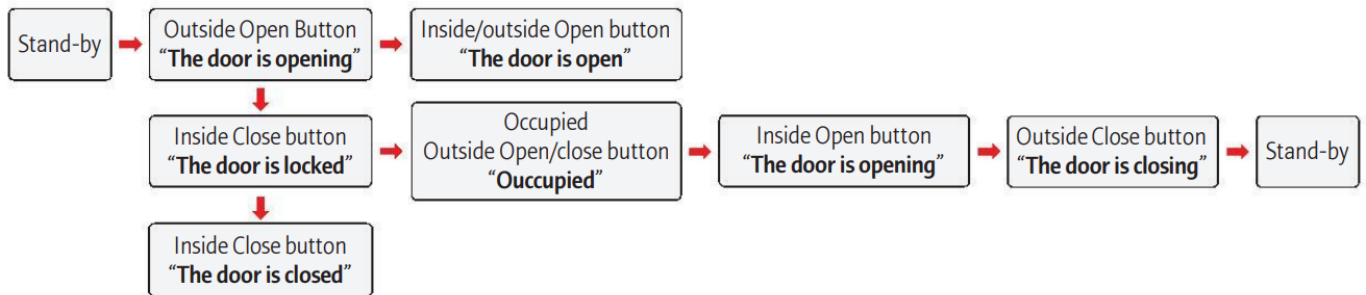
Dip Switch	Time	Dip Switch	Time
	After 3 s close the door		After 15 min, close the door
	After 15 s close the door		Manual (Toggle) open or close by pressing button

### 6. Voice Language Selection

### Dip Switch (Default : ENG)

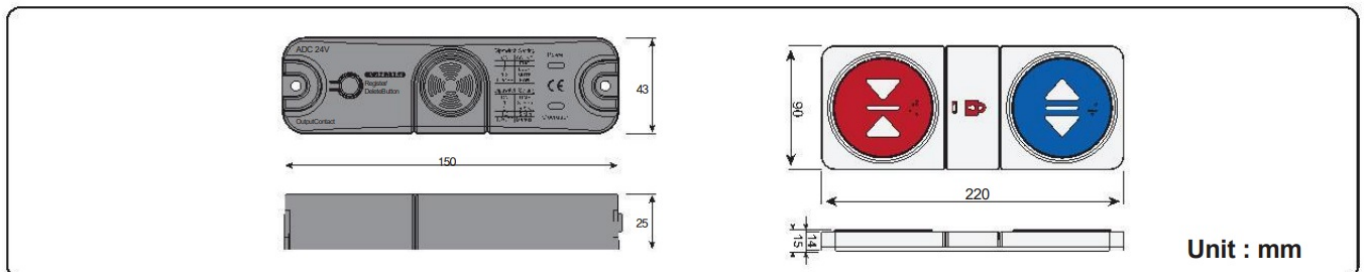


### 7. Switch Operation Announcement



The door will automatically open one hour after it has been closed from the inside.

### External Dimensions



### Documents / Resources

	<p><a href="#">Hotron R-C-RSN-WHD4 ClearGuard Wireless Automated Toilet Door Switch Set</a> [pdf] Instr uction Manual</p> <p>R-C-RSN-WHD4, R-R-RSN-WHD8, R-C-RSN-WHD4 ClearGuard Wireless Automated Toilet D oor Switch Set, ClearGuard Wireless Automated Toilet Door Switch Set, Wireless Automated T oilet Door Switch Set, Toilet Door Switch Set</p>
--	-----------------------------------------------------------------------------------------------------------------------------------------------------------------------------------------------------------------------------------------------------------------------------------------------------------------------------------------------------------------------