



[Home](#) » [hotmail](#) » **hotmail AC1300Mbps WIFI USB Adapter User Guide** 

Contents [[hide](#)]

- [1 Hotmail AC1300Mbps WIFI USB Adapter](#)
- [2 Specifications](#)
- [3 Product Usage Instructions](#)
- [4 Product Overview](#)
- [5 Install the driver as below](#)
- [6 Uninstall Driver](#)
- [7 Warranty](#)
- [8 Frequently Asked Questions](#)
- [9 FAQs](#)
- [10 Documents / Resources](#)
 - [10.1 References](#)

Hotmail.

Hotmail AC1300Mbps WIFI USB Adapter



Specifications

- Model: 6B37/6B17 WiFi USB Adapter
- Speed: Up to 867Mbps on 5GHz network, and 400Mbps on 2.4GHz network
- Compatibility: Works with desktops and laptops
- Port: USB3.0

Product Usage Instructions

Wireless Signal Connection

If you are having trouble with the wireless signal connection, follow these steps:

1. Check the nearby router's WiFi function by connecting directly to a cellphone.
2. Adjust the distance between the adapter and router to avoid obstacles like thick walls and metal.

Internet Speed Improvement

If you have a connection but a slow internet speed, try the following:

1. Connect the WiFi adapter to a USB 3.0 port for higher speeds.
2. Use the adapter in an area with a stronger signal.
3. If connected to a 2.4GHz network, switch the router to 5GHz.

Reconnecting after Inactivity

To avoid internet disconnection after inactivity:

- Turn off the power-saving mode of your PC to ensure quick reconnection to the router.

Setting Up 5G WiFi Signal

you can't detect the 5G WiFi signal, follow these steps:

1. Ensure your router supports 5 GG.
2. Turn off the Combine 2.4 GHz and 5 GHz WiFi network settings to manually choose between them.

Troubleshooting WiFi Connection

If you can detect but not connect to the WiFi signal:

1. Ensure correct password entry.
2. Check fothe r MAC address binding with the router.
3. Reboot the optical modem and router, and keep devices close to the router.
4. Verify driver correctness, uninstall and reinstall if needed.
5. Turn on the WiFi signal of your PC.

Get to know your WiFi USB adapter

Product Overview

Hakimonoe Wireless USB Adapter connects your computer to a Wi-Fi network for smooth HD video, voice streaming and online gaming.

- The high-gain dual antennas greatly enhance the reception and transmission signal strength of the USB adapter.
- Utilizes IEEE802.11ac standard @ 5GHz; IEEE802.11b/g/n standard @ 2.4GHz.
- Supports WEP, WPA/WPA-2/WPA-3, WPA-PSK/WPA2-PSK, WPA3-SAE.
- Supports 2.4GHz band max 400Mbps; 5GHz band max 867Mbps.
- Supports System Windows 11/10/8.1/8/7/XP/Vista/2000/Mac OS 10.9-10.15

LED Status

You can check the adapter's working status by following the LED status:

- **On** The driver has been installed successfully.
- **Off**: The driver is not installed, the LED is not detected, or the adapter is not detected.
- **TIPS**: If the LED is off, try these troubleshooting steps:

1. Click if the adapter is recognised and enabled or not.
2. Remove and reinsert the adapter.
3. Reinstall the software, if necessary.

How to use the Adapter on Windows OS

For Windows 11/10 OS

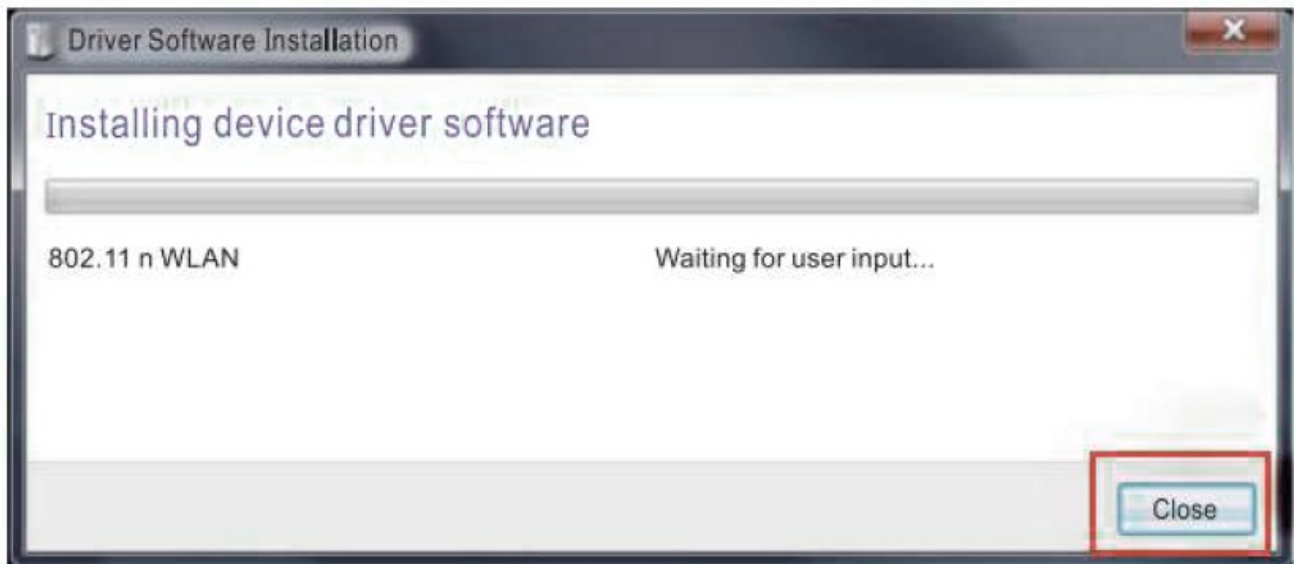
Just need to plug it into the USB2.0 or USB3.0 port of your computer, and join a wireless network.

TIPS

1. It is recommended to connect the adapter to a USB 3.0 port (Blue Port).
 2. It is recommended to connect the rear USB 3.0 interface of your computer, and the performance will be better. (Most of the PC's front USB port is underpowered or unavailable.)
- 2.2 For Others Windows OS:

Install the driver as below

1. Insert the adapter into a USB port on your computer.
2. The following message will appear on your computer: click "Cancel / Close".



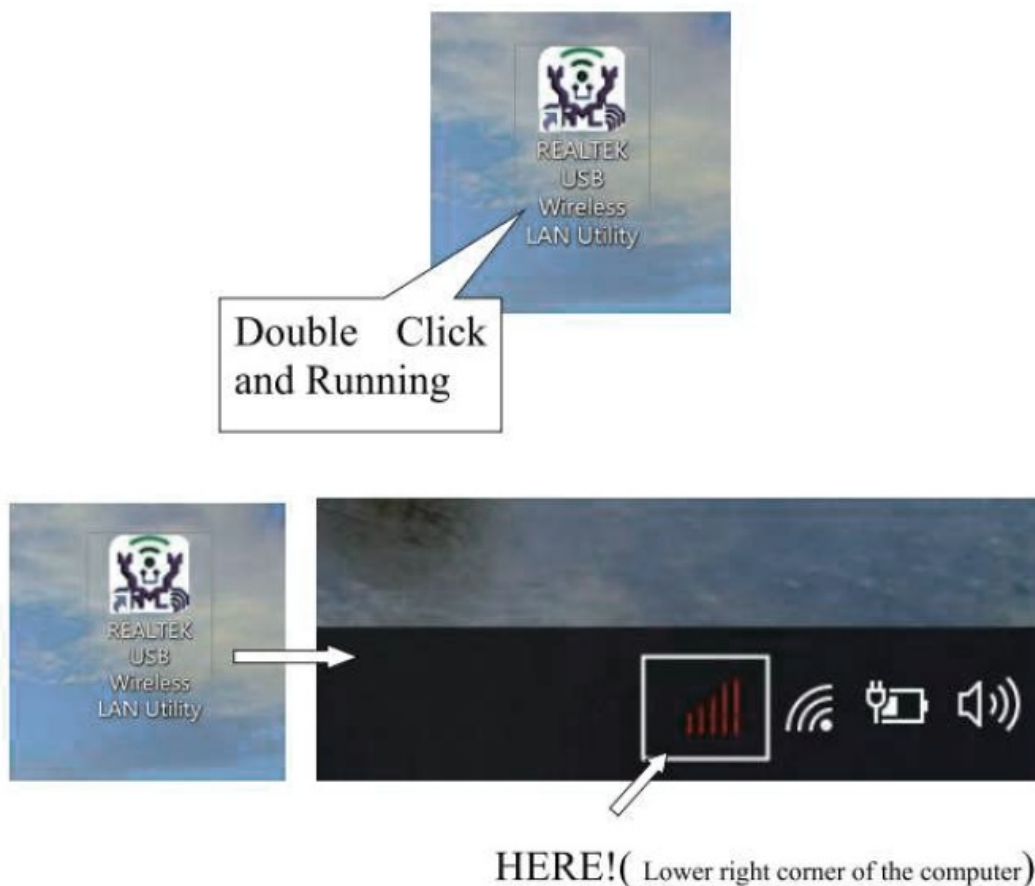
3. Please use the USB disk to install the driver. Double left-click on the “Windows” to find “Setup.exe” file and follow the directions to finish the installation.

EAP	2023/10/27 16:24
IHV	2023/10/27 16:24
Release notes	2023/10/27 16:24
RTWLANU_Driver	2023/10/27 16:24
WlanUI	2023/10/27 16:24
Autorun	2022/5/17 16:59
Install	2022/5/17 16:59
Setup	2022/5/17 16:59
setup.iss	2022/5/17 16:59
UnInstall	2022/5/17 16:59
Uninstall.iss	2022/5/17 16:59

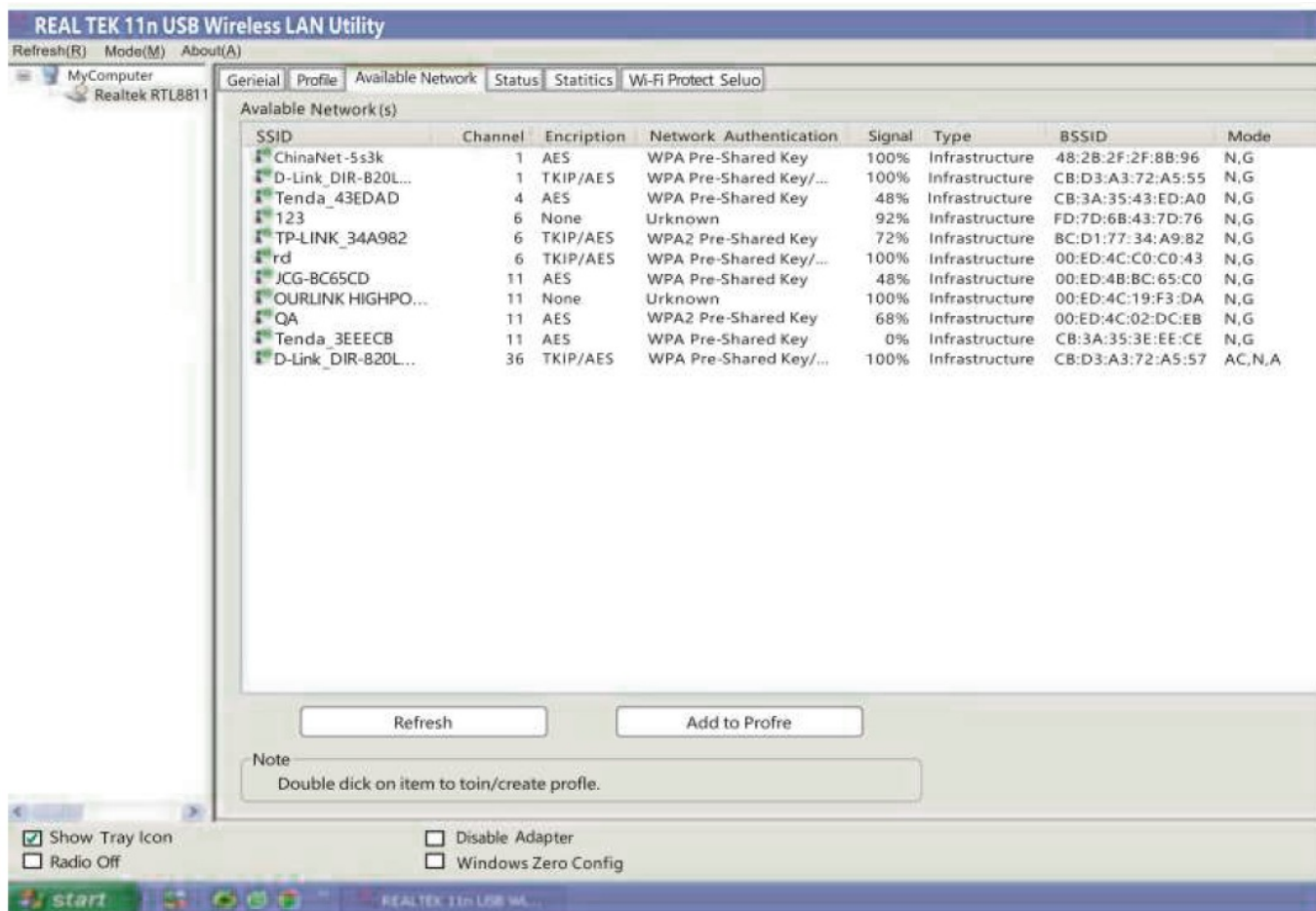
Once the installation is finished, the computer will be asked to reboot. Please click “Finish” and reboot the computer to finish the installation of driver files.



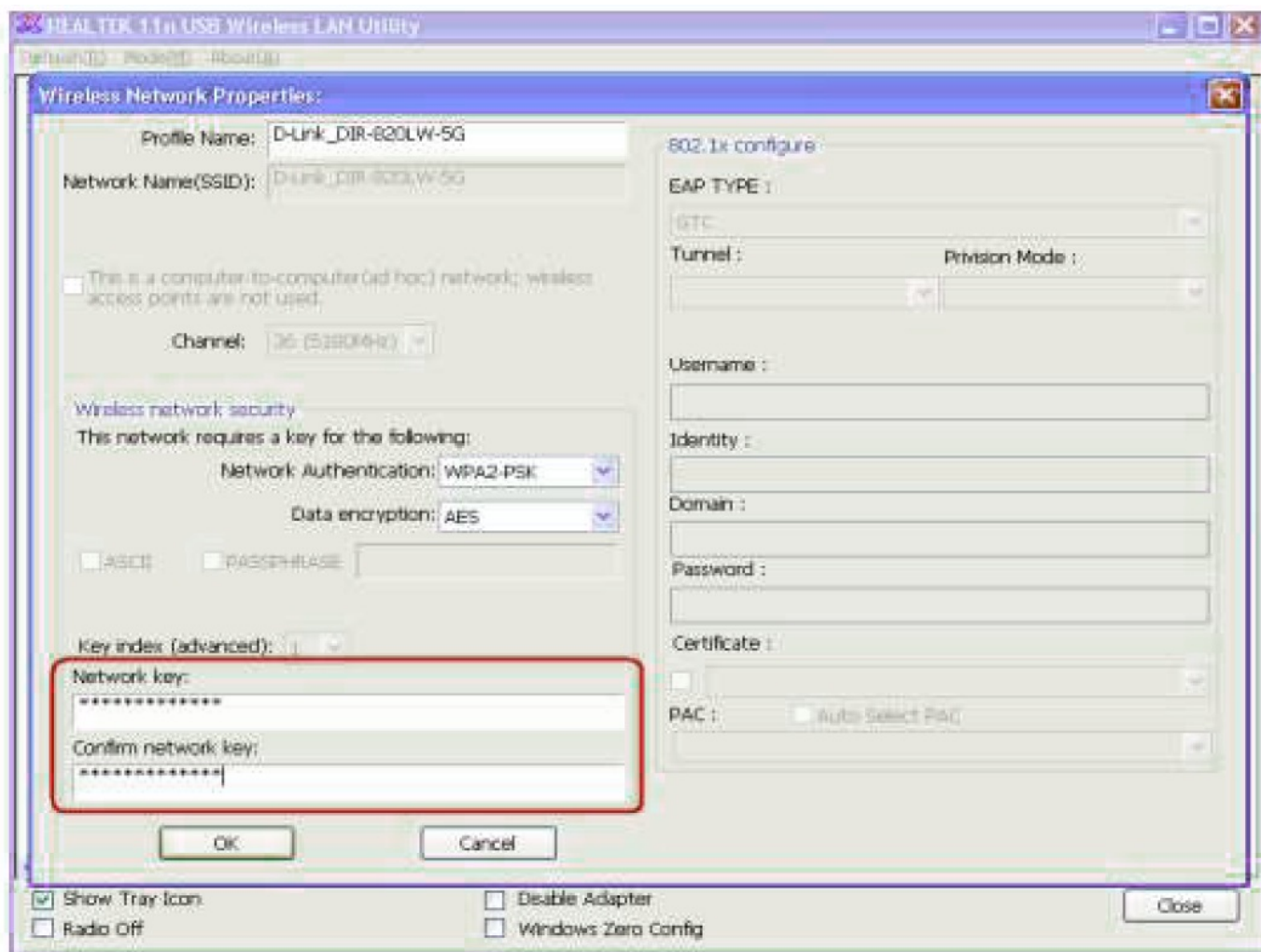
After finishing the driver installation, double-click and run the new icon.



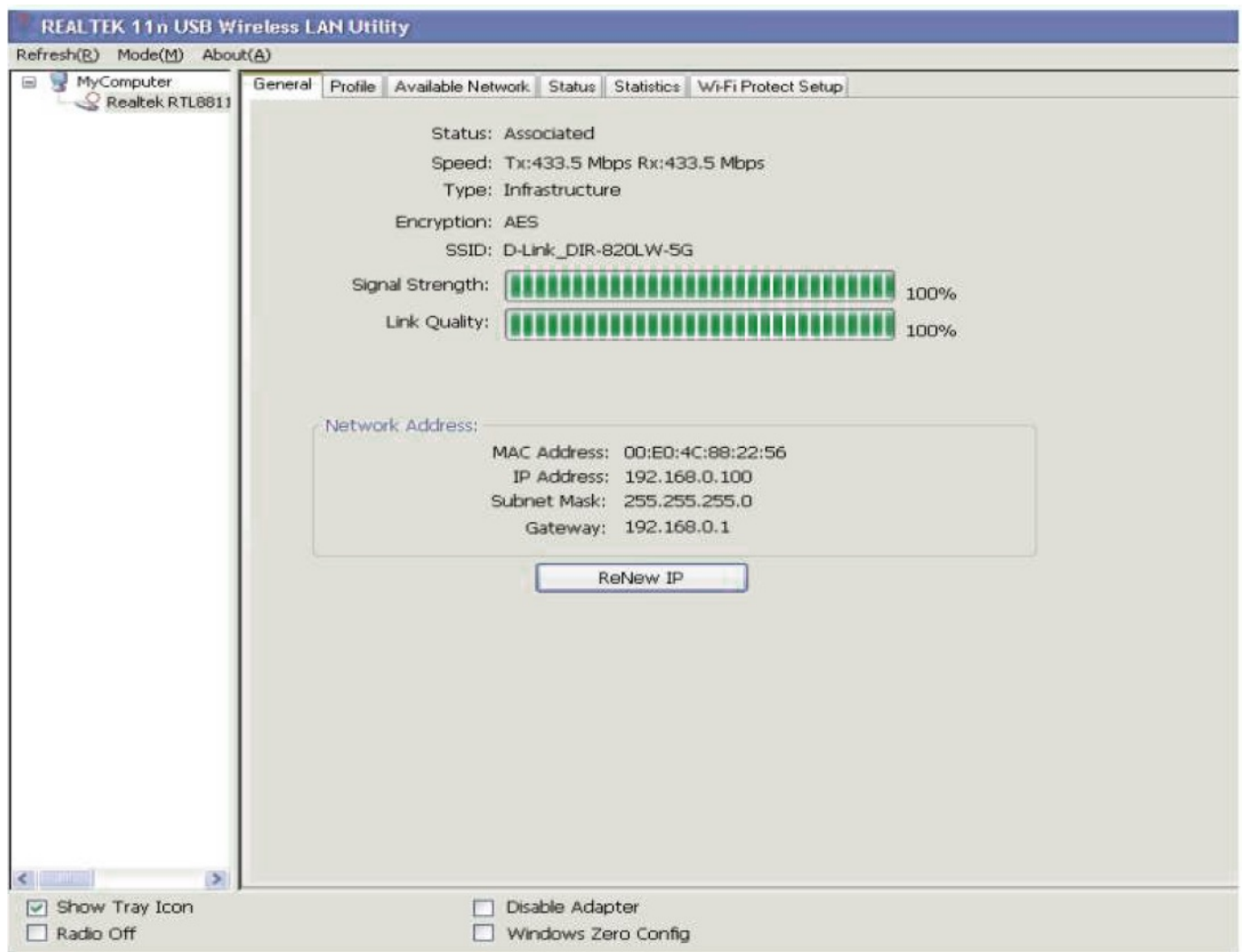
Click "Available Networks", Select the wireless access point you would like to connect and press "Add to Profile" Button.



Fill into the security information if any requirement, and then click “OK” to connect the wireless network.

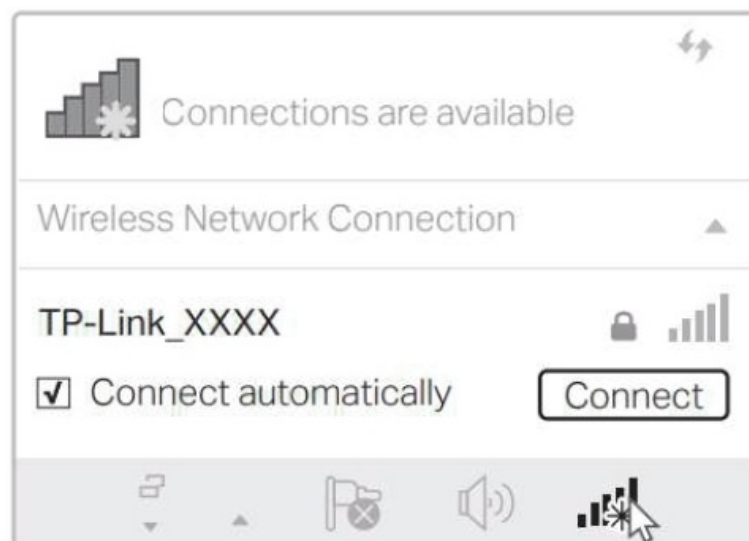


Connected successfully, it will show the status.



You can also join a wireless network via Windows Wireless Utility

- Click the network icon on the taskbar.
- Select your Wi-Fi network, click Connect and enter the password when prompted.



This icon also uses different colours to show the status of the wireless connection



Wireless connection is established, good signal reception.



Wireless connection is established, weak signal reception.



Connection is not established yet.



Wireless network card is not detected.

Uninstall Driver

The software uninstallation steps vary a bit from different systems. Please follow the appropriate instructions for Windows operating systems: Windows 8/8.1/10, Windows xp/7.

1. Windows 8/8.1/10

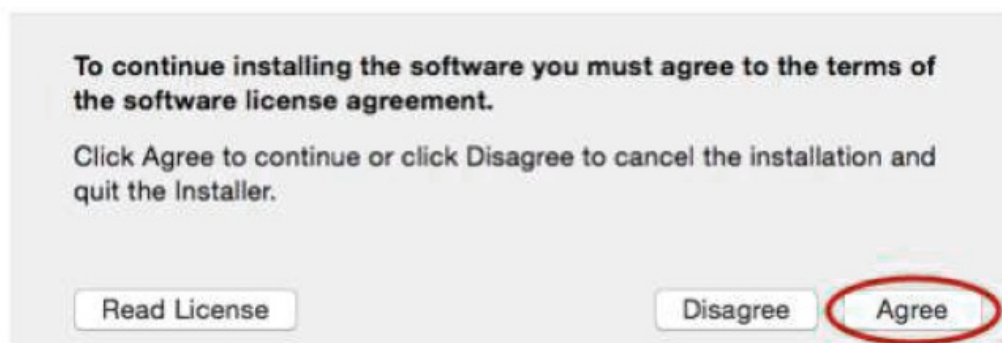
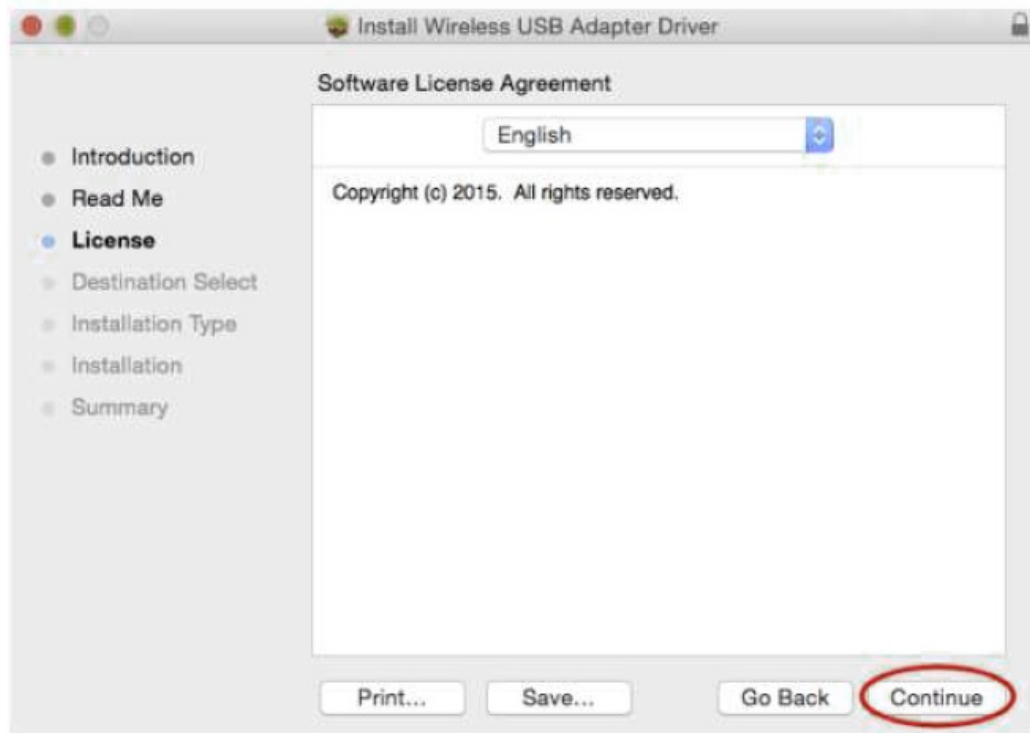
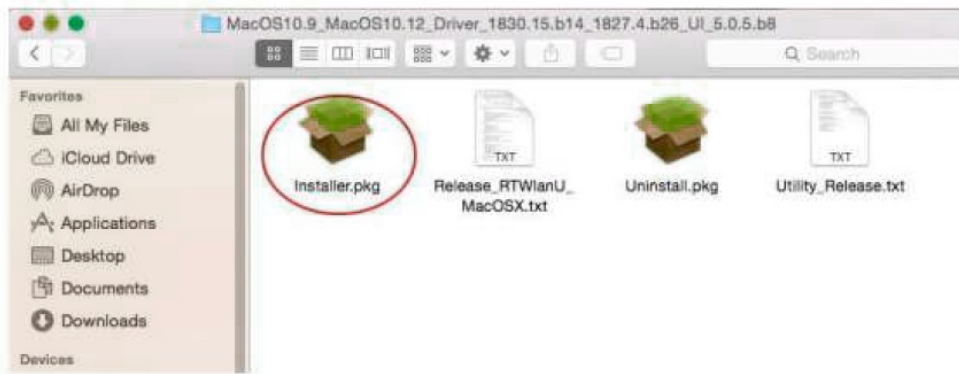
Go to the Start menu to find the Realtek application. Click “Uninstall”, then follow the on-screen instructions to complete the uninstallation.

2. Windows XP/7

Go to Start>All Programs>Realtek>Uninstall the driver. Follow the on-screen instructions to complete the uninstallation.

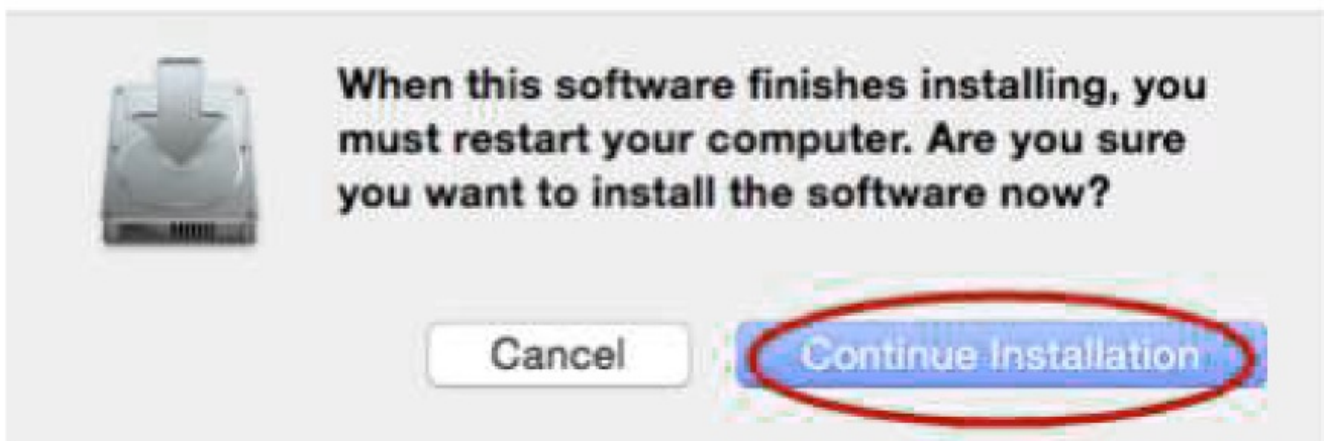
Mac OS X V10.9- 10.15 does not work with Other Versions.

1. Please plug the USB disk into your PC, go into the USB driver to find the “MAC” file and then double-click “Install.pkg” and operate it as the steps below:

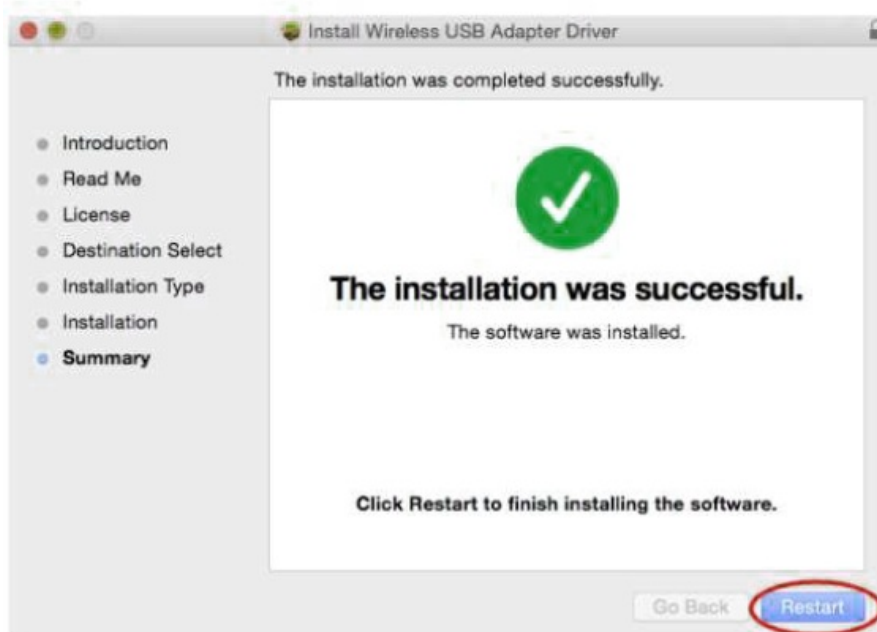
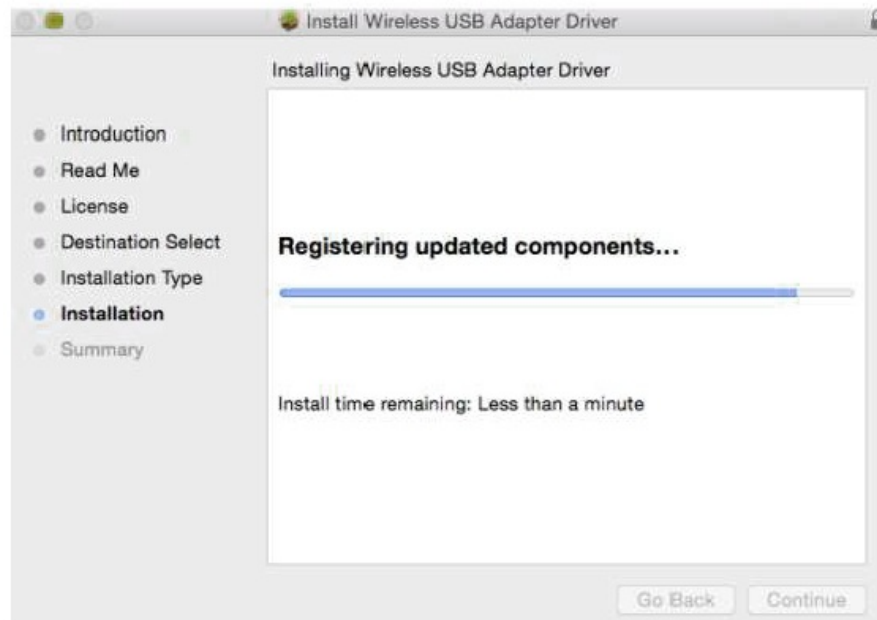




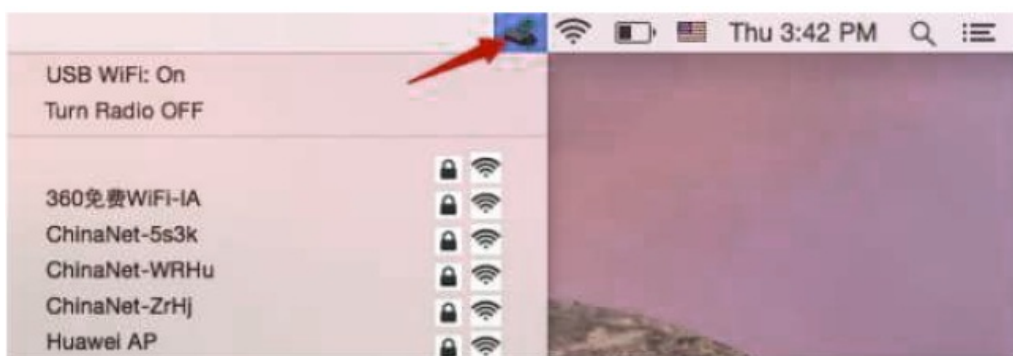
2. Please input your PC power-on password here, then click “Install Software”. If no password, please click “Install Software” directly to enter the next steps



3. It shows “Installing Wireless USB Adapter Driver., Please wait a few minutes and then restart your computer as the below steps:



4. You can see the wireless card installed here after you restart the PC.



Warranty

This Product is covered by our Product and labour warranty for 12 months from the date of its original purchase. If manufacturing defects occur, please contact our support team immediately to launch a warranty claim. We will instruct you on how to return the

defective unit to us for repair or replacement. The following are excluded from our warranty cover:

1. Device purchased as 2nd-hand, used, or from unauthorised sellers.
2. Damage resulted from misuse and abusive action.
3. Damage resulted from Chemical, fire, radioactive substance, poison, or liquid.
4. Damage resulted from a natural disaster.
5. Damage caused to any 3rd party, person, object, or beyond.

Statement

We can only provide after-sales services for products that are sold by us. If you have purchased this unit from a different place, please contact the seller for return and warranty issues.

Contact US

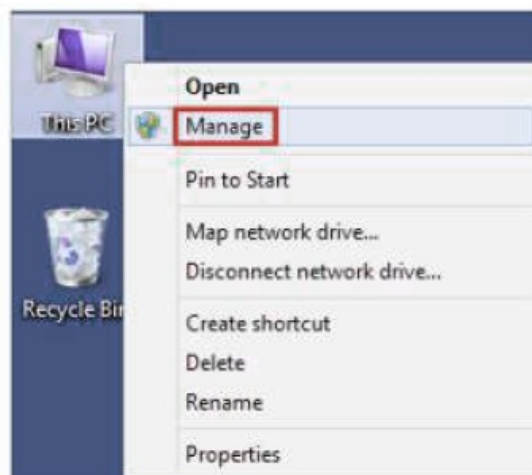
Email: amzvip2020@hotmail.com

If you need any further assistance, please contact our customer support team and tell us your order number # anytime, and we will reply to you within 24 hours.

Frequently Asked Questions

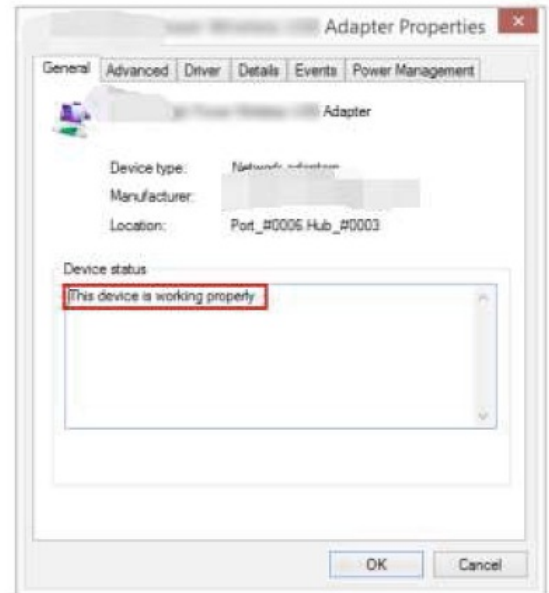
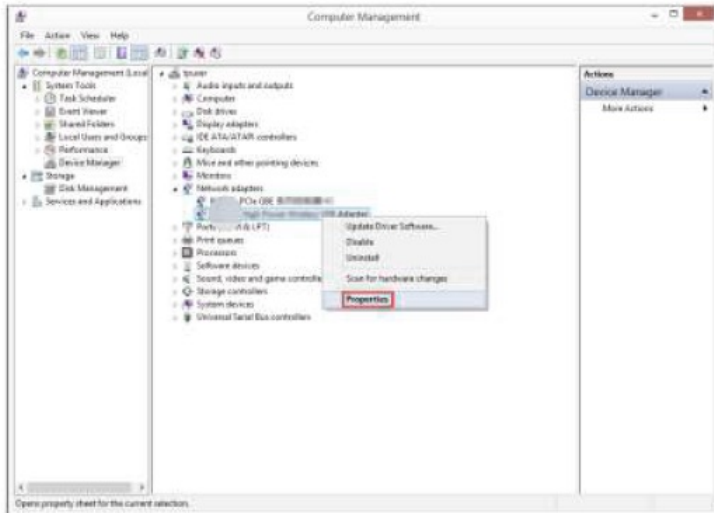
Q: How to check if I have installed the driver for my adapter successfully or not?

1. On your computer, please right-click the Computer icon and go to Manage



2. Open the "Device Manager" and go to "Network Adapter", and then find the corresponding "Realtek USB WIFI Adapter", right click it and then go to Properties:
3. If you can see "This device is working properly" in the red box, you have already

installed the driver successfully.



FAQs

What should I do if I can't connect to the Wi-Fi after installing the driver?

*Refer to the above steps to check if you have installed the driver for your adapter successfully. *Make sure the adapter is securely connected to the PC. *Disable the antivirus software and firewall, then try it again. *Try a different USB port on the computer. *Restart your computer and try again. *Reinstall the driver and try again.

Why can't I get a wireless signal?

*Please check if the nearby router's WiFi function works properly when connected directly to the cellphone. *Try adjusting the distance between the adapter and the router to avoid obstacles such as thick walls and metal.

I have successfully got a connection, but the internet speed is slow. Is there a way to improve it?

*Connect the WiFi adapter to the USB 3.00 port of your PC. USB3.0 port is blue e colour or marked USB3.0. Because USB2.0 MAX high speed is 480Mbps. USB 3.0 MAX high speed is 5000 Mbps. So we need to use USB3.0 to ensure 5GHz wifi

max speed up to 867Mbps, using fB2.0, the internet speed will slow. *Try using the adapter in an area with a stronger signal. *If you are originally connected to a 2.4GHz wireless network, please change the wireless router from 2.4GHz to 5GHz and try again. *The wireless internet speeds also depend on Network Vendors, Network Broadband, Wireless Router Performance etc many factors.


The internet is disconnected when the computer wakes up after a period of inactivity?

To avoid any delay in reconnecting to the router after inactivity, we suggest you to turn off the power-saving mode of PC, otherwise it will take about 5-10 seconds to reconnect to the router when the PC awakes after inactivity, giving the impression that the network is directly disconnected.

I can detect the WiFi signal, but can't connect, what should I do?

*Please ensure that you have entered the correct password. *Check if you have set the binding of your Mac address and the router. If yes, you need to set the binding of the Mac address and the WiFi adapter. *Reboot the optical modem and router, and try to keep the devices that need to be connected to the network as close to the router as possible. *Check if the driver is correct, uninstall the driver and reinstall it. *Please turn off the WiFi signal of your PC and then turn it on again.

Documents / Resources

	<p>hotmail AC1300Mbps WIFI USB Adapter [pdf] User Guide</p> <p>6B37, 6B17, AC1300Mbps WIFI USB Adapter, AC1300Mbps, WIFI USB Adapter, USB Adapter, Adapter</p>
---	--

References

- [User Manual](#)

ul>

📁 hotmail

💡 6B17, 6B37, AC1300Mbps, AC1300Mbps WIFI USB Adapter, Adapter, Hotmail, USB Adapter, WiFi USB Adapter

—

Leave a comment

Your email address will not be published. Required fields are marked *

Comment *

Name

Email

Website

☐ Save my name, email, and website in this browser for the next time I comment.

Post Comment

Search:

e.g. whirlpool wrf535swhz

Search

This website is an independent publication and is neither affiliated with nor endorsed by any of the trademark owners. The "Bluetooth®" word mark and logos are registered trademarks owned by Bluetooth SIG, Inc. The "Wi-Fi®" word mark and logos are registered trademarks owned by the Wi-Fi Alliance. Any use of these marks on this website does not imply any affiliation with or endorsement.