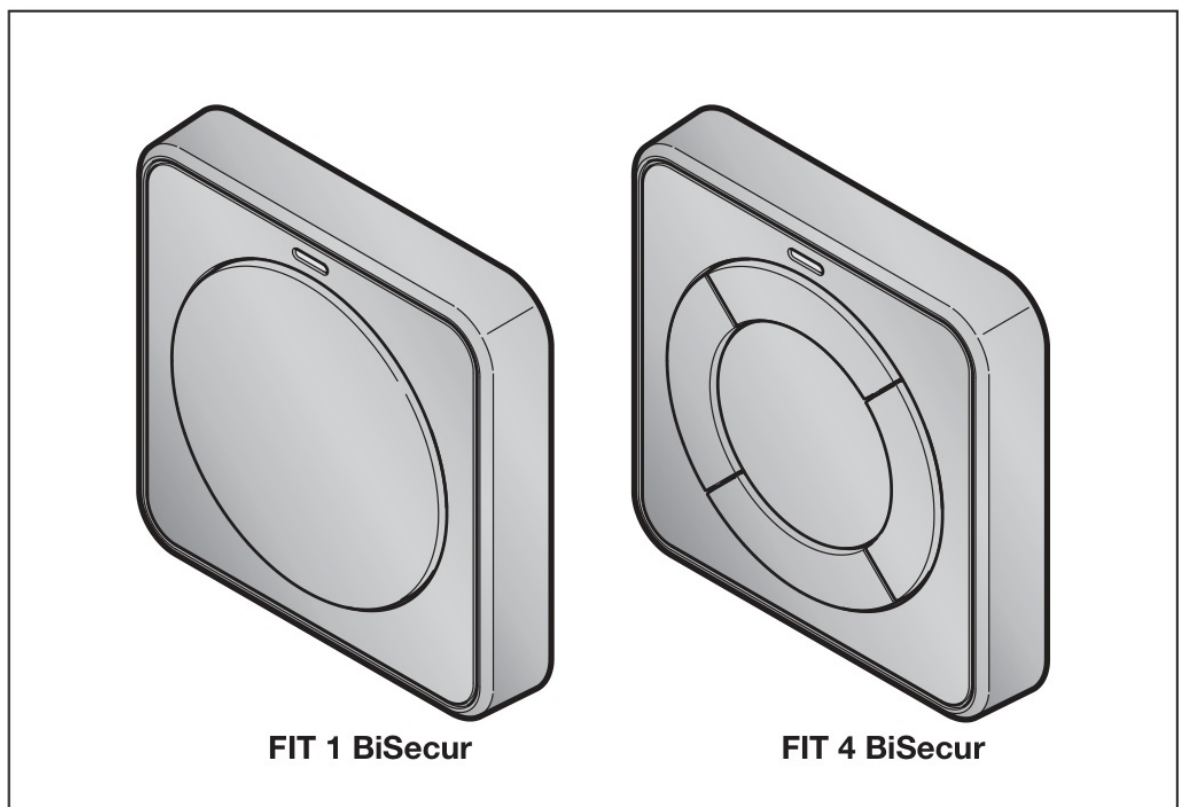




## HORMANN FIT 1 BiSecur Radio Internal Push Button Instruction Manual

[Home](#) » [HORMANN](#) » [HORMANN FIT 1 BiSecur Radio Internal Push Button Instruction Manual](#) 

**HORMANN FIT 1 BiSecur Radio Internal Push  
Button Instruction Manual**



**Instructions for fitting and operating**  
Radio internal push button FIT 1 / 4 BiSecur

## Contents

- 1 About these instructions
- 2 Safety instructions
- 3 Scope of delivery
- 4 Product description (see Figure 1 )
- 5 Fitting
- 6 Initial start-up
- 7 Operation
- 8 Learning and inheriting / transmitting a radio code
- 9 Reset
- 10 LED display
- 11 Dismantling and disposal
- 12 Technical data
- 13 Documents / Resources
  - 13.1 References

## About these instructions

These instructions are divided into a text section and an illustrated section. They contain important information on the product, and especially safety instructions and warnings.

- Read through the instructions carefully.
- Keep these instructions in a safe place.

### 1 .1 Definitions used

#### System

A door with the associated operator.

Dissemination as well as duplication of this document and the use and communication of its content are prohibited unless explicitly permitted. Noncompliance will result in damage compensation obligations. All rights reserved in the event of patent, utility model or design model registration.

#### Equipment / system

A product with radio receiver, e.g. relay receiver, radio socket receiver.

Status

The current position of a door or the current status of an equipment / system.

### 1 .2 Symbols used



Important note for avoiding material damage and personnel injury



High exertion of force

## Safety instructions

### 2.1 Intended use

The radio internal push button FIT 1 / 4 BiSecur is a bi-directional transmitter for door operators and radio equipment. It can be operated via BiSecur radio and the fixed code 868 MHz.

Other applications are not permitted. The manufacturer is not liable for damages caused by improper use or incorrect operation.

### 2.2 Safety instructions for teach-in and operation



#### WARNING

#### Risk of injury during intended or unintended door travel

- Make sure that the radio internal push buttons are kept away from children and can only be used by people who have been instructed on how the remote-control system functions!
- If the door has only one safety equipment, only operate the radio internal push button if you are within sight of the door!
- Drive or walk through the door openings of remote-controlled systems only when the door is in the Open end-of-travel position!
- Never stand in the door's area of travel.
- Note that accidentally pressing a button on the hand transmitter can result in door travel.
- Pay attention that no persons or objects are in the system's area of travel when teaching in the radio system.



#### CAUTION

#### Danger through unintended activation of equipment.

The remote-controlled operation of equipment can result in unintended activation, for example, machines can be actuated.

- Ensure that the remote-controlled operation of equipment does not result in danger to persons or objects or that these risks are covered by safety equipment.
- Observe the manufacturer information for the remote-controlled devices.
- The unintentional activation of machines must not be possible.

## NOTES

- If there is no separate entrance, perform changes and extensions of radio systems while standing in the facility.
- After programming or extending the radio system, you have to perform a function check.
- Local conditions may affect the range of the radio system.

## **Scope of delivery**

- Radio internal push button FIT 1 / 4 BiSecur
- 2 × 1.5 V battery, type: AAA (LR03), alkali-manganese
- Fixing material
- Operating instructions

## **Product description (see Figure 1 )**

1. LED, multicolour
2. Transmitter button
3. Housing
4. Mounting plate
5. Battery

## **Fitting**

The choice of the fitting location affects the range.

- Prior to fitting, verify that the radio signal can reach the system or the equipment at the selected fitting site.
  - Determine the best orientation, by trial and error, if required.
- Direct fitting on metal will affect the range.
  - Fit at a distance of 2 – 3 cm.

The radio internal push button can be fitted in two different ways:

### **Gluing the radio internal push button .**

- See section 5.1

### **Screwing on the radio internal push button .**

- See section 5.2

## **5 .1 Gluing the radio internal push button**

### **5 .1 .1 Cleaning the surfaces**

The surfaces must be dry and free of dust, grease, oil and separating agents.

- Use clean, lint-free and non-perfumed cleaning cloths.

- Only use suitable cleaning agents, e.g. benzine.
- Do not use lipid-restoring household cleaners or glass cleaners.

### **5 .1 .2 Gluing the radio internal push button (see Figure 2 )**

- Do not touch the gluing surface.
- Quickly glue the mounting plate in the desired position.  
Adjusting the position subsequently is only partially possible.

### **5 .2 Screwing on the radio internal push button (see Figure 3 )**

#### **Initial start-up**

After inserting the battery, the radio internal push button is ready for operation.

### **6 .1 Inserting / changing the battery (see Figure 4 )**



**WARNING**

#### **Risk of explosion due to incorrect battery type**

- Use only this battery type: 2 × 1.5 V, type: AAA (LR03), alkali-manganese
- Remove the battery from the radio internal push button if it is out of use for a long period of time.

Proper disposal: See section 12

#### **Operation**

Each transmitter button is assigned to a radio code.

- Press the transmitter button whose radio code you want to transmit.
- The LED is illuminated blue for 2 seconds.
- The radio code is transmitted

### **7 .1 .1 Learning behaviour of inherited radio codes**

If the radio code for the transmitter button has been inherited from a hand transmitter and is being used for the first time, proceed as follows depending on the product:

### **7 .1 .2 Garage door operator series 4, roller garage door operator series 2, receiver ESE BS HCP**

- Press and hold the transmitter button until the LED flashes alternately in red and blue and the desired function is performed.

### **7 .1 .3 All other products**

- Press the transmitter button a second time.

## Learning and inheriting / transmitting a radio code



### WARNING

#### Risk of injury during intended or unintended door travel

- See warning in section 2.2.

### 8.1 Teaching in a radio code (see Figure 5)

1. Hold the hand transmitter A to the right of the radio internal push button.
2. Press and hold the hand transmitter button whose radio code is to be inherited.
  - The LED is illuminated blue for 2 seconds and then goes out.
  - After 5 seconds, the LED alternates flashing in red and blue.
  - The hand transmitter sends the radio code.
3. Press and hold the transmitter button that should learn the radio code.
  - The LED is illuminated blue for 2 seconds and then goes out.
  - The LED will flash slowly in blue.
  - If the radio code is recognised, the LED flashes quickly in blue.
  - After 2 seconds, the LED goes out.
4. Release the hand transmitter button and the transmitter button.
 

The radio code of the hand transmitter button has been taught in to the transmitter button .

### NOTE

You have 15 seconds to inherit / transmit the radio code. If inheriting / transmitting the code was not successful within this period of time, repeat the process.

### 8.2 Mixed operation / BiSecur and fixed code 868 MHz

If BiSecur radio is configured, mixed operation (BiSecur and fixed code 868 MHz) is possible. The radio internal push button can learn radio codes from older hand transmitters (grey hand transmitter with blue buttons or device designation HSD2- 868) with fixed code 868 MHz.

### Reset

Each transmitter button is assigned to a new radio code by means of the following steps.

1. Open the radio internal push button housing.
2. Remove the battery for 10 seconds.
3. Press a transmitter button and keep it pressed.
4. Insert the battery.
  - The LED slowly flashes in blue for 4 seconds.

- The LED flashes rapidly in blue for 2 seconds.
  - The LED is illuminated blue for a long time.
5. Release the transmitter button.  
All radio codes are newly assigned .
  6. Close the radio internal push button housing.

## NOTE

If you release the transmitter button prematurely, no new radio code is allocated.

### 9 .1 Setting the fixed code 868 MHz

1. Carry out steps 1 – 4 of the device reset
2. Continue to keep the transmitter button pressed.
  - The LED slowly flashes in red for 4 seconds.
  - The LED flashes rapidly in red for 2 seconds.
  - The LED is illuminated red for a long time.
3. Release the transmitter button.  
**The fixed code 868 MHz has been set .**
4. Close the radio internal push button housing.

## NOTE

If you release the transmitter button prematurely, no new radio code is allocated.  
For more information, visit [www.hoermann.com](http://www.hoermann.com).

## LED display

### Blue (BU)

Status	Function
Is illuminated for 2 seconds	A radio code is being transmitted
Flashes slowly	Radio internal push button is in the learn mode
Flashes quickly after slow flashing	A valid radio code was detected during learning
Flashes slowly for 4 seconds, flashes quickly for 2 seconds, is illuminated long	Reset is being performed and completed

### Red (RD)

Status	Function
Flashes twice; following this, the radio code continues to be transmitted	The battery should be replaced soon
Flashes twice; following this, the radio code is no longer transmitted	The battery must be replaced immediately

#### Blue (BU) and Red (RD)

Status	Function
Flashing alternately	The radio internal push button is in inherit / transmit mode

#### Cleaning

ATTENTION
<b>Damaging the radio internal push button by faulty cleaning</b> ▶ Only clean the radio internal push button with a clean, soft cloth.

#### NOTE

Regular use of disinfectants can cause damage to the radio internal push button.

#### Dismantling and disposal

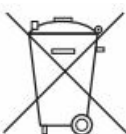
If the radio internal push button is glued, heat the adhesive strips to dismantle it, for example with a hair dryer.



Dispose of the packaging sorted by materials



Electrical and electronic devices must be returned to the appropriate recycling facilities.



Dispose of the batteries separately. Each consumer is legally required to leave batteries with a collection point in their community, their district, or with a trader.

#### Technical data



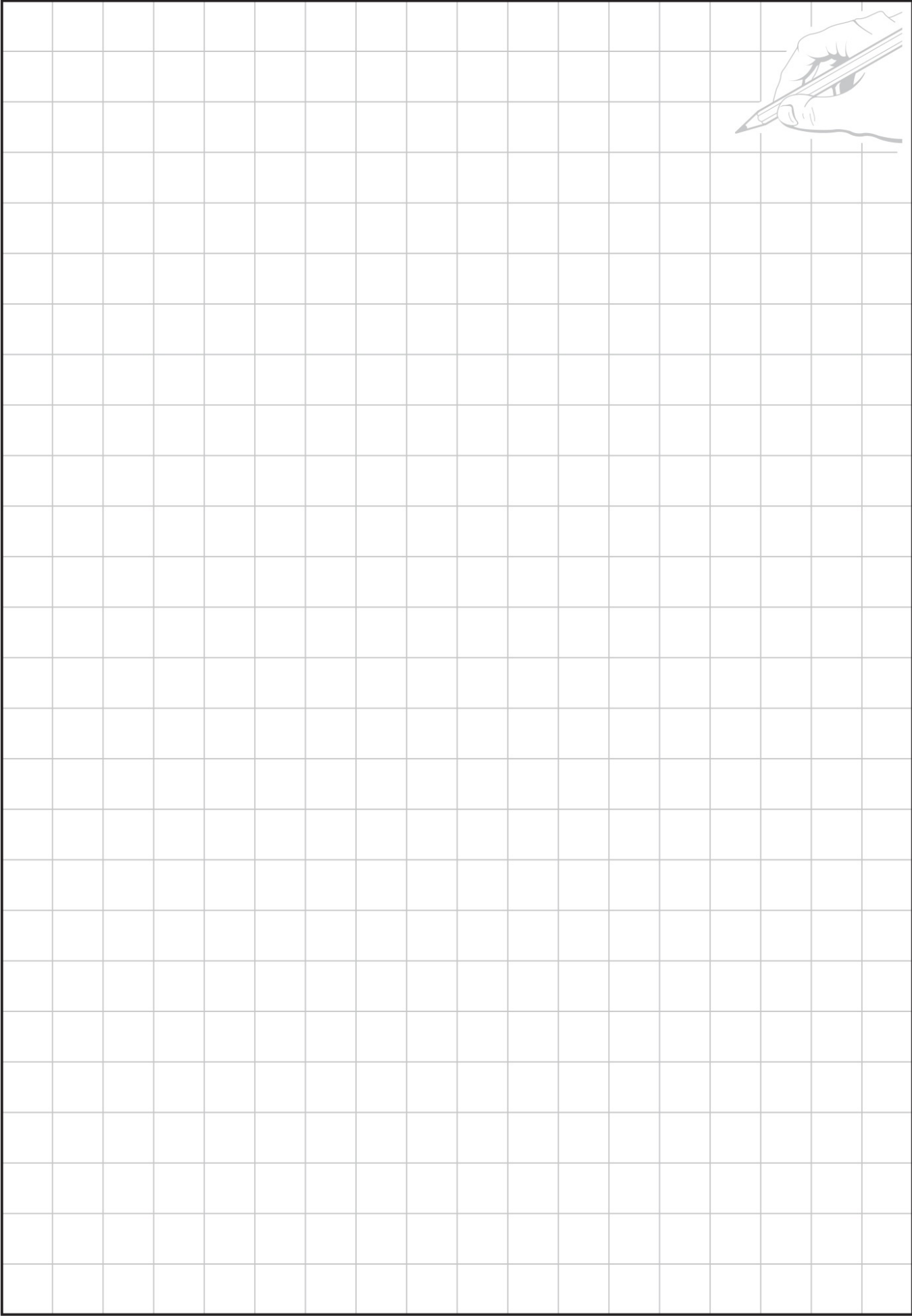
Model	FIT1-868-BS / FIT4-868-BS
Frequency	868 MHz
Transmitting power	Max. 20 mW (EIRP)
Power supply	2 × 1.5 V battery, type: AAA (LR03), alkali-manganese
Perm. ambient temperature	-20 °C to +50 °C
Max. humidity	Max. humidity
Protection category	IP 20
Dimensions (W × H × D)	80 × 80 × 15 mm

#### **EU and UK Declaration of Conformity**

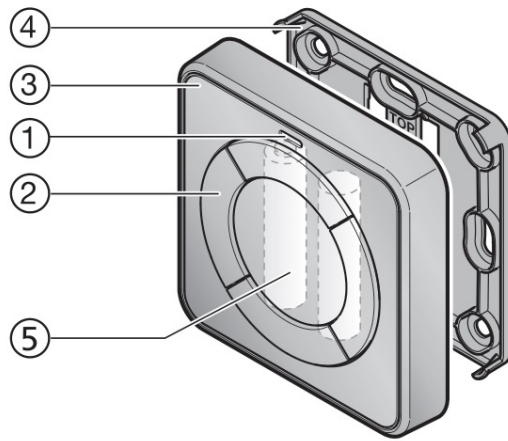
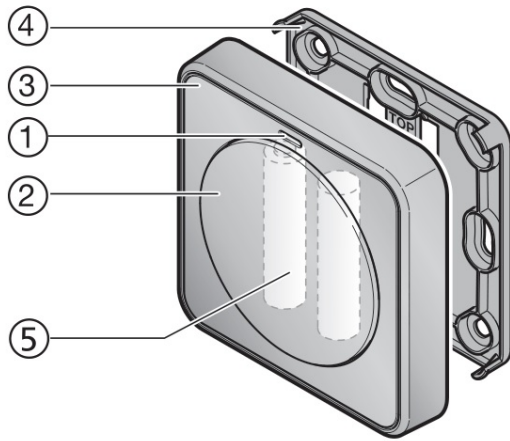
Hörmann KG Verkaufsgesellschaft and Hörmann UK Ltd. herewith declares that the radio equipment type radio internal push button FIT 1 / 4 BiSecur complies with the EU Directive 2014/53/EU and the UK Regulations 2017 No. 1206. The complete text of the EU Declaration of Conformity and of the UK Declaration of Conformity can be found on the following website:



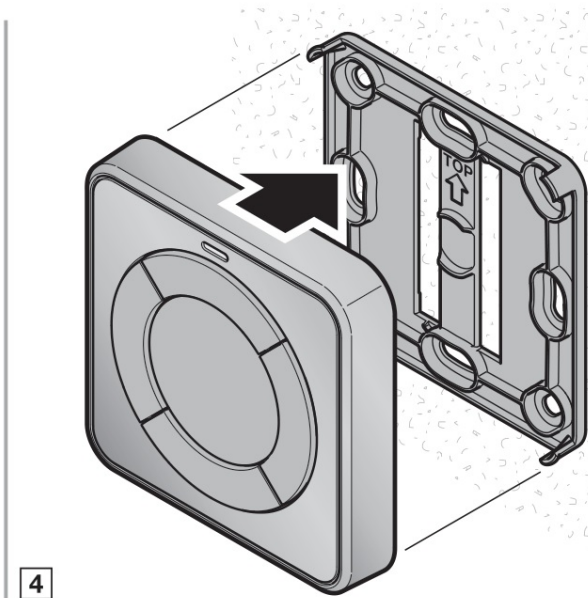
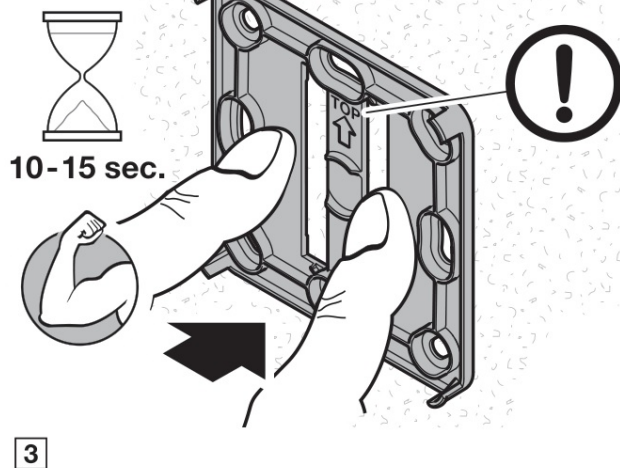
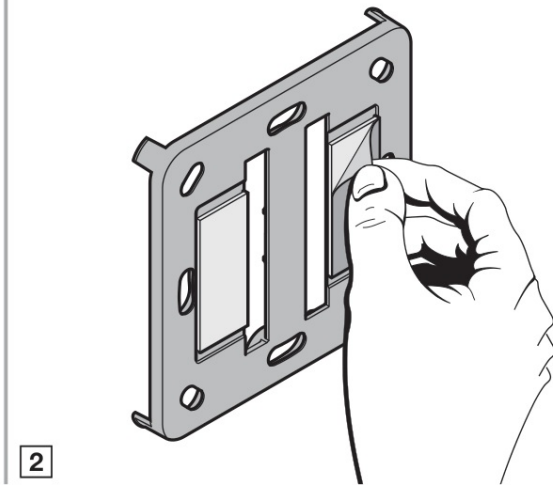
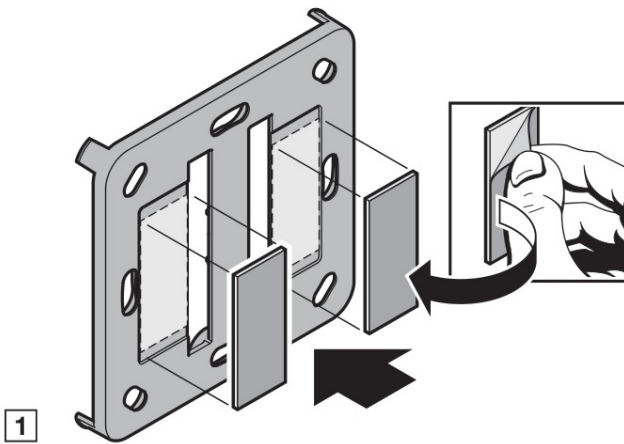
<http://www.hoermann-docs.com/277129>

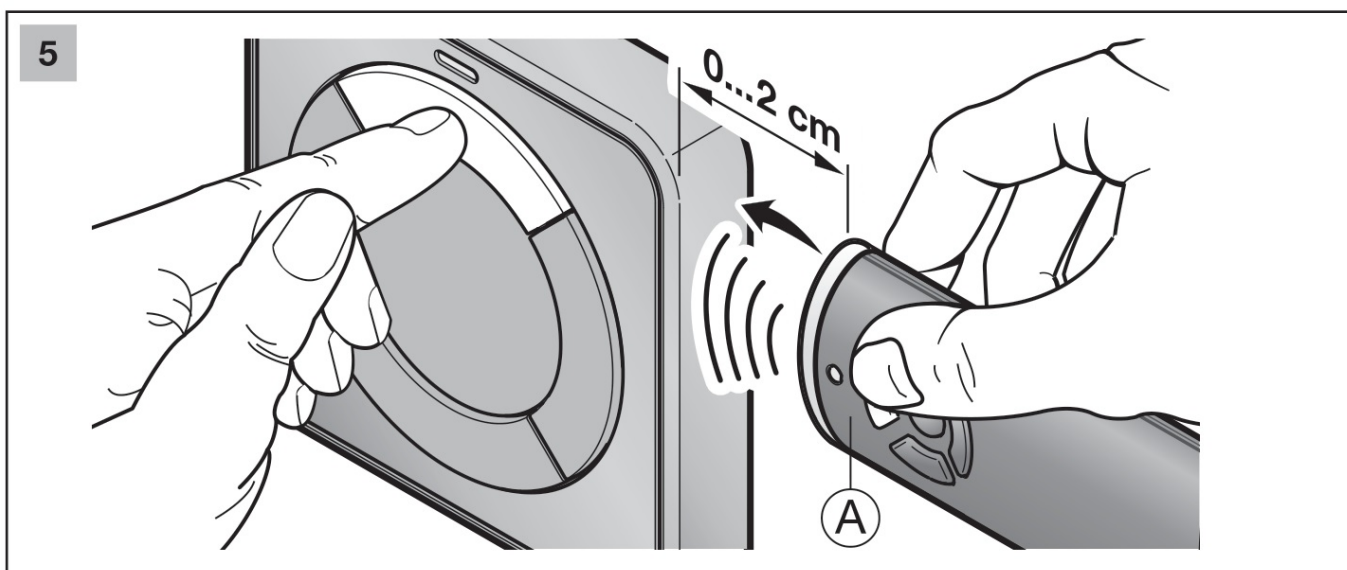
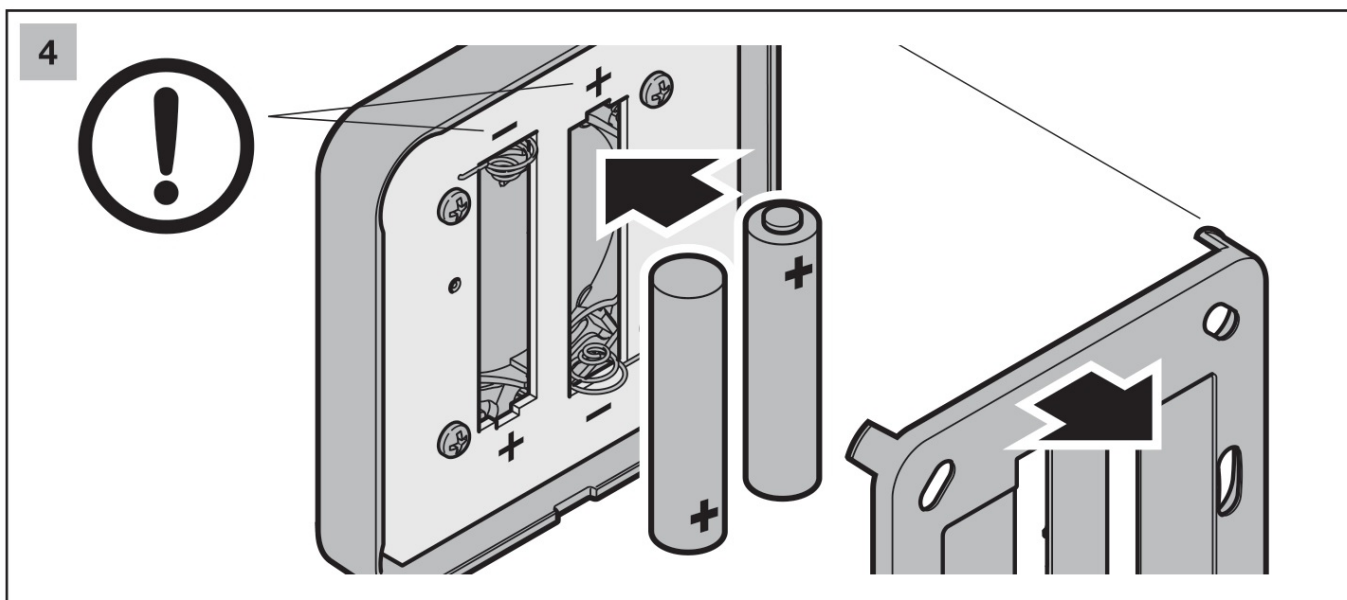
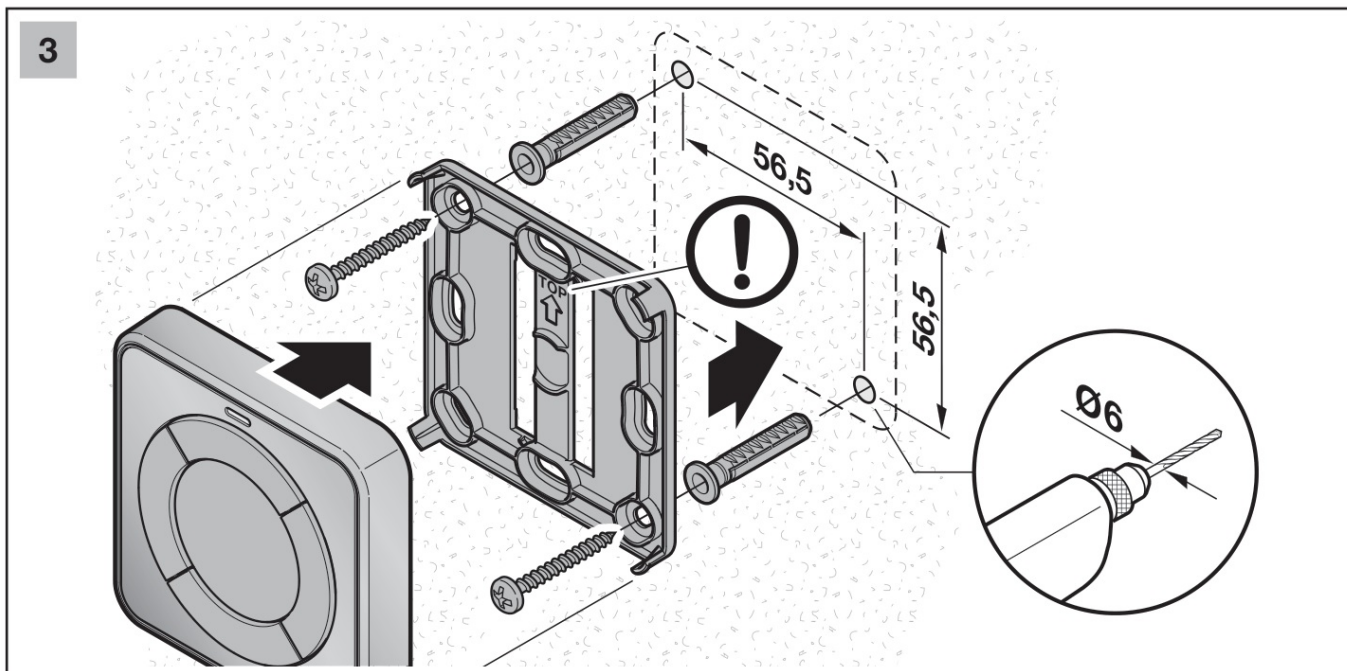


1



2

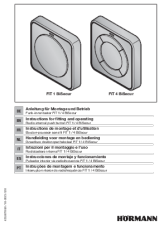






4553878 B1

Documents / Resources

	<p><b><a href="#">HORMANN FIT 1 BiSecur Radio Internal Push Button</a></b> [pdf] Instruction Manual</p> <p>FIT 1 BiSecur, FIT 4 BiSecur, FIT 1 BiSecur Radio Internal Push Button, FIT 1 BiSecur, Radio I nternal Push Button, Internal Push Button, Push Button, Button</p>
--	--

References

- [hoermann-docs.com/277129](https://hoermann-docs.com/277129)