



# HORI NSW-465U Split Pad Compact Controller Instruction Manual

[Home](#) » [HORI](#) » HORI NSW-465U Split Pad Compact Controller Instruction Manual 



**Instruction Manual**  
**Thank you for purchasing this product.**

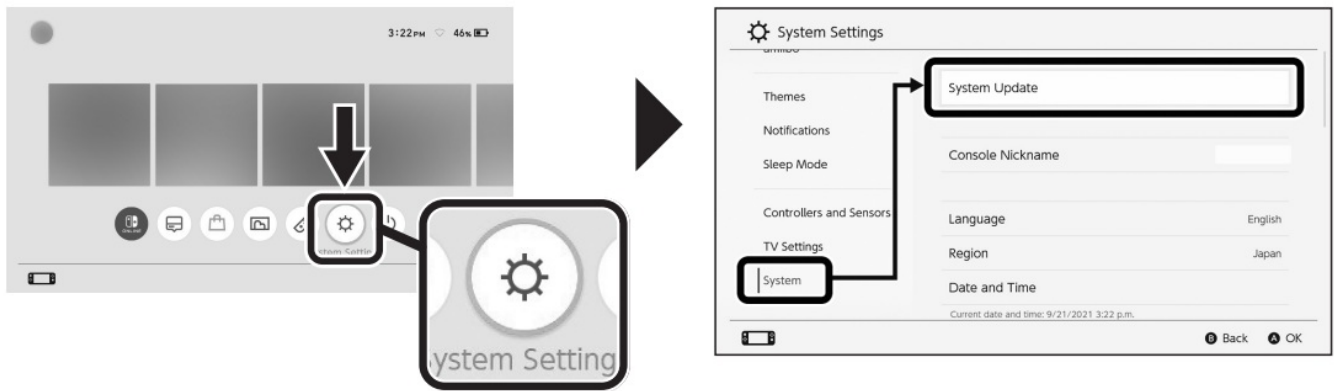
## Contents

- [1 NSW-465U Split Pad Compact Controller](#)
- [2 Included](#)
- [3 Layout](#)
- [4 Troubleshooting](#)
- [5 Assign Mode](#)
- [6 How to set up Turbo Function](#)
- [7 How to change Turbo Speed](#)
- [8 Main Features](#)
- [9 PRODUCT DISPOSAL INFORMATION](#)
- [10 Documents / Resources](#)
  - [10.1 References](#)

## NSW-465U Split Pad Compact Controller

Before using this product please read the instructions carefully.  
After reading the instruction manual, please keep it for reference.  
Split Pad Compact for Nintendo Switch™

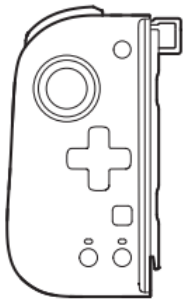
Please check that your Nintendo Switch is up to date before using this product.



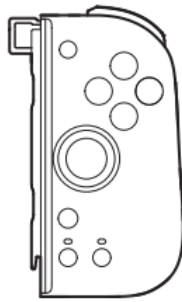
From the Home Menu

Select 'System' and then 'System Update' to update to the latest system firmware.

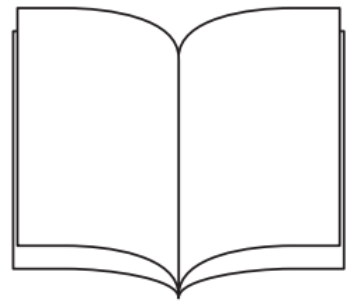
### Included



Controller (L) ×1



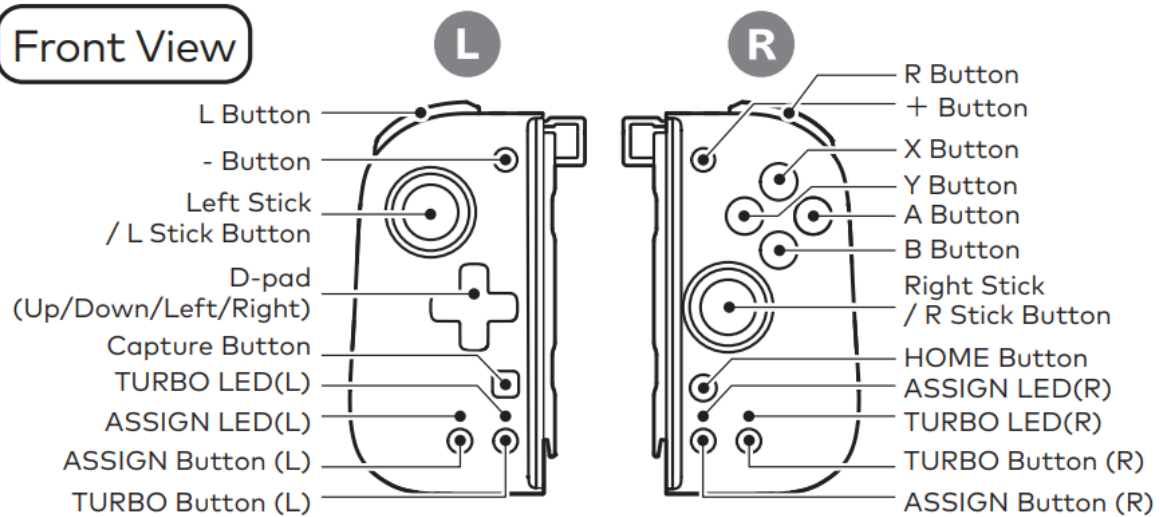
Controller (R) ×1



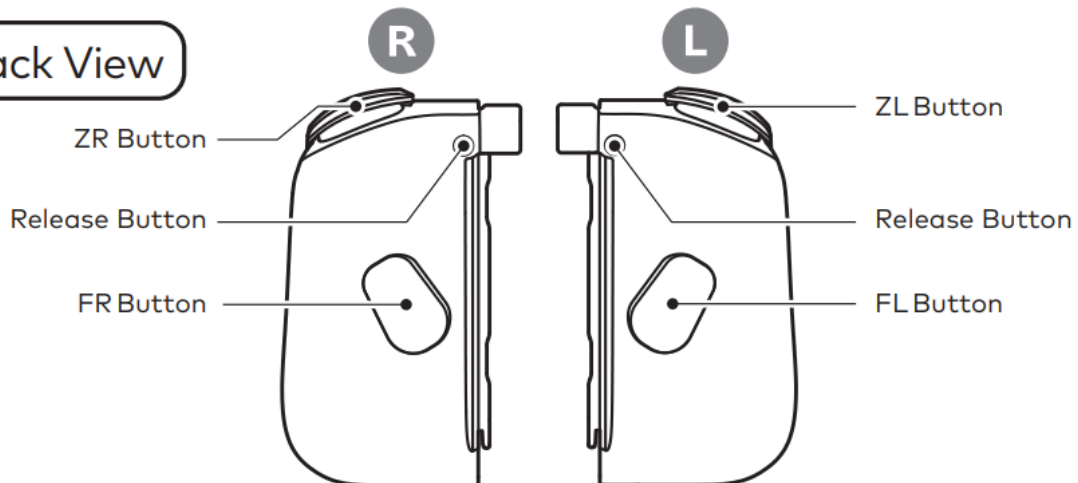
Instruction manual ×1

### Layout

## Front View

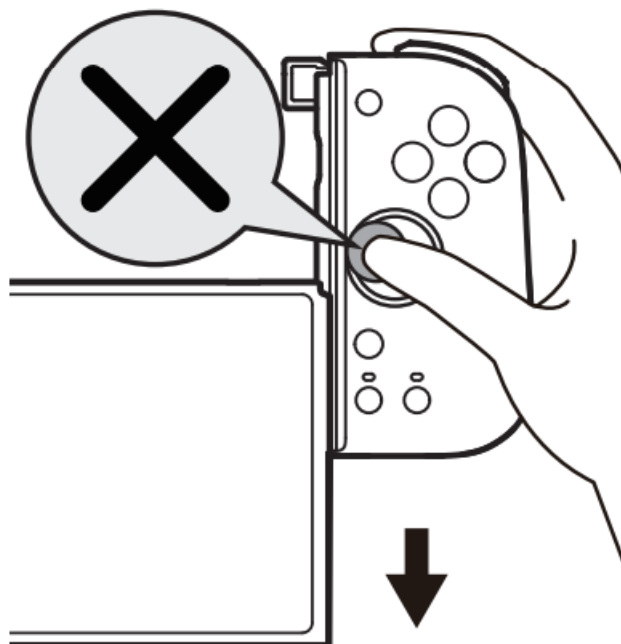


## Back View



### Caution

Do not touch any of the buttons or sticks when turning on the console, attaching, or registering the controllers.



## Troubleshooting

– Please check that the Split Pad Compact is properly attached to the Nintendo Switch™

\* Check that the Nintendo Switch™ is up to date to the latest system firmware

## Assign Mode

Assign mode allows you to assign button functions to the FL and FR buttons.

\*Cannot be assigned to multiple buttons at the same time

### FL Button

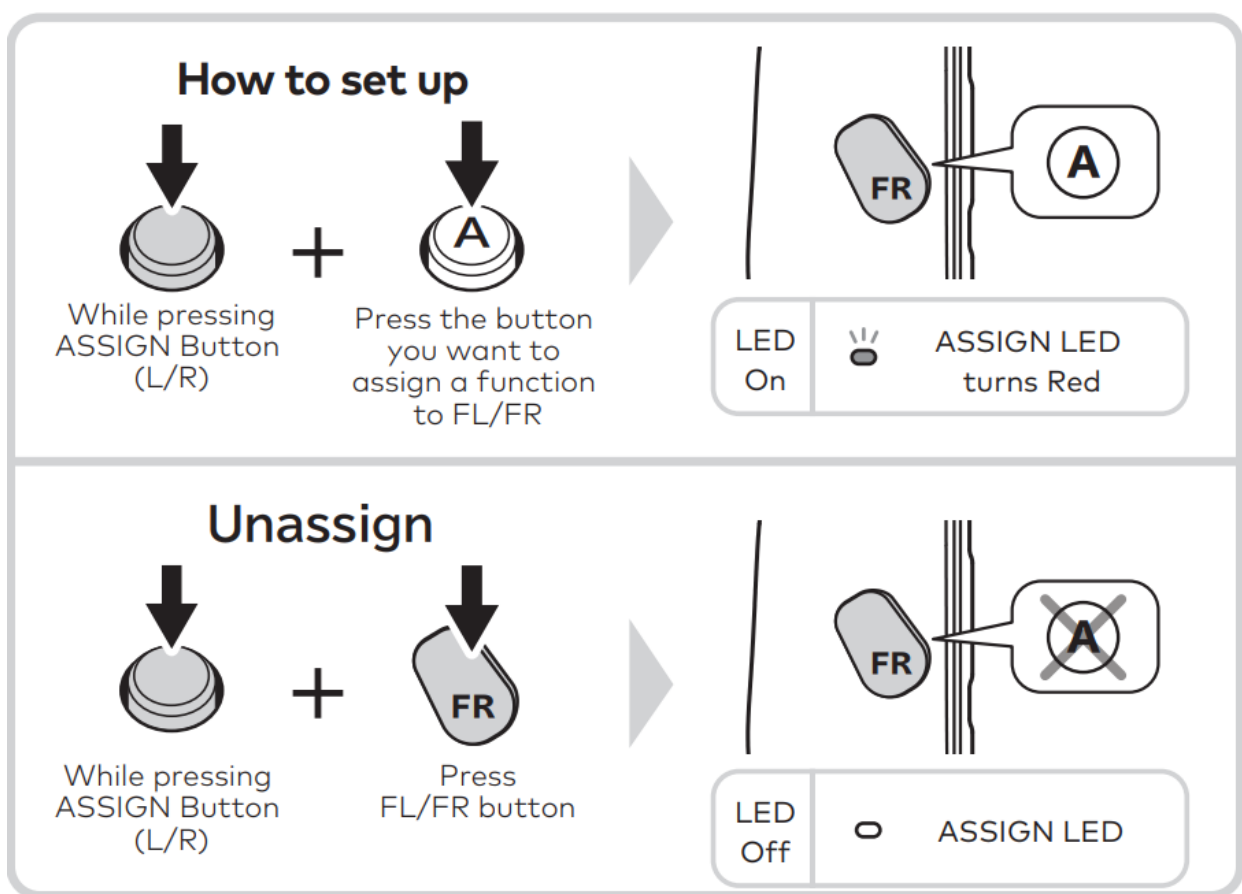
#### Assignable buttons

L Button / ZL Button / L Stick Button / D-pad (UP, DOWN, LEFT or RIGHT) / – Button

### FR Button

#### Assignable buttons

R Button / ZR Button / R Stick Button / A Button / B Button / X Button / Y Button / Button



\* Please use the ASSIGN Button (L) when setting button functions to FL Button.  
Please use the ASSIGN Button (R) when setting button function to FR Button.

### Turbo / Turbo Hold Mode

Turbo Mode can be set to 3 different speeds.

The following buttons can be set to Turbo or Turbo Hold mode

#### Controller (L)

L Button / ZL Button / L Stick Button / D-pad (UP, DOWN, LEFT or RIGHT)\*1 / FL Button \*2

#### Controller (R)

R Button / ZR Button / R Stick Button / A Button / B Button / X Button / Y Button / FR Button\*3

\*1 D-Pad (UP, DOWN, LEFT or RIGHT) is not compatible with the Turbo hold mode, and can only be used to set

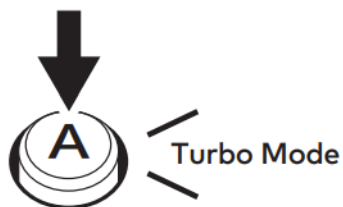
Turbo mode.

\*2 The FL Button will function only when a button function is assigned to it.

\*3 The FR Button will function only when a button function is assigned to it.

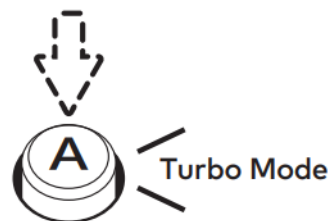
## Turbo Mode

Turbo Mode will be activated while the button is pressed.




## Turbo Hold


Continuously activates the button function without pressing the button.



## TURBO LED

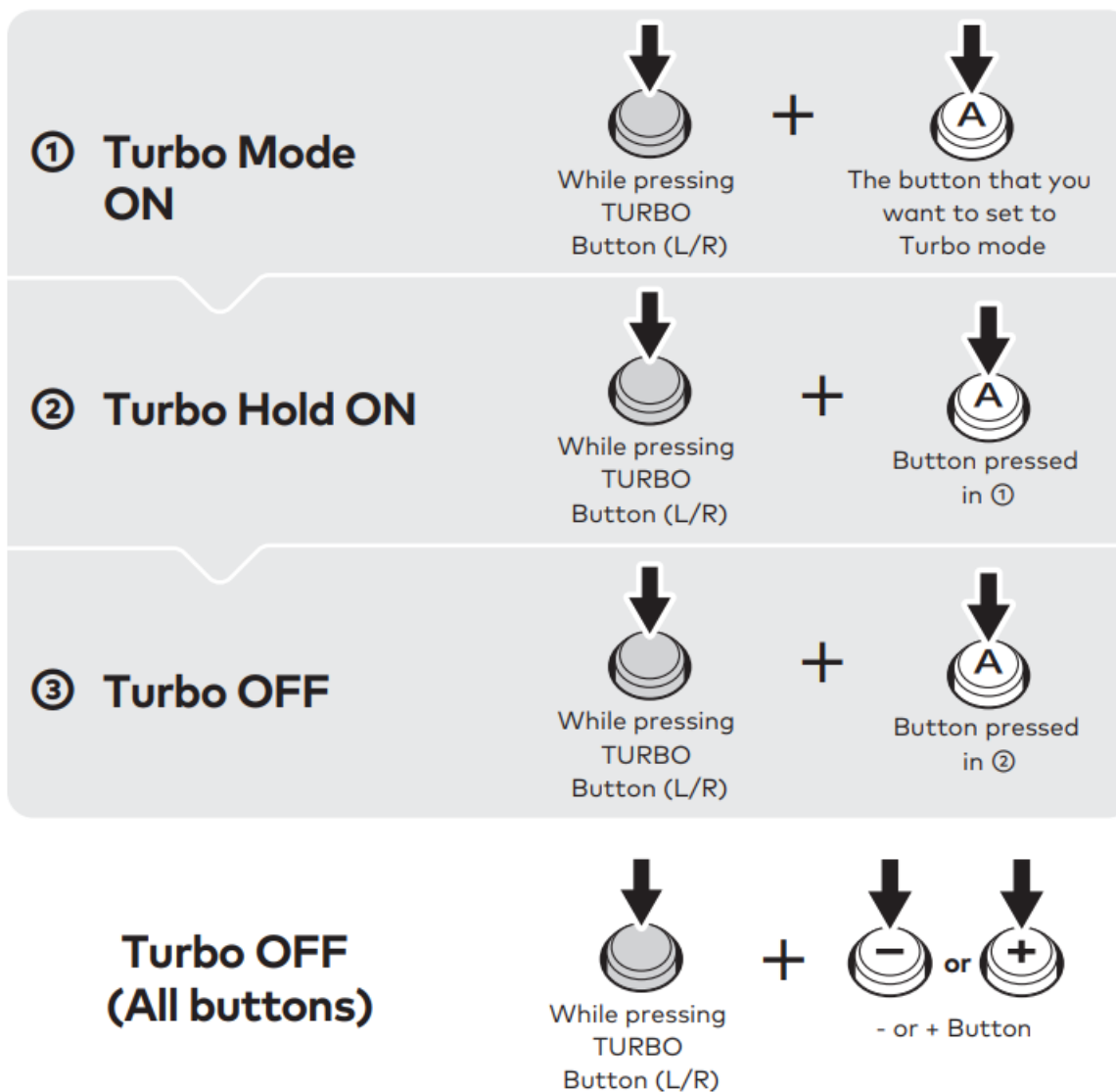
 **Setting up Turbo function**  
TURBO LED  
turn Green



 **Turbo function activated**  
TURBO LED  
flashing (Green)\*

\* The Turbo LED (Green) will flash at a rate corresponding to the Turbo speed.

## How to set up Turbo Function

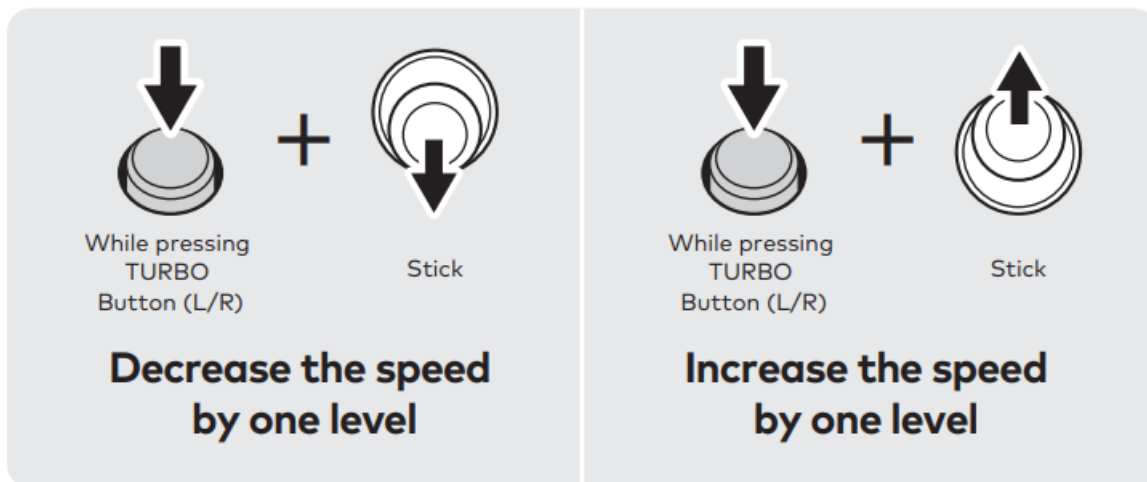


\* Please use the TURBO Button (L) and the – Button when adjusting the Turbo Speed on (L). Please use the TURBO Button (R) and the + Button when adjusting the Turbo Speed on (R).

## How to change Turbo Speed

Turbo mode can be set to 3 different speeds.

5 times/second    →    10 times/second    →    20 times/second  
 ←    ←    ←



\* Please use the TURBO Button (L) and the Left Stick when adjusting the Turbo Speed on (L). Please use the TURBO Button (R) and the Right Stick when adjusting the Turbo Speed on (R).

\* When setting Turbo speed, Turbo LED (green) will flash at a rate corresponding to the set Turbo speed.

\* Turbo speed is set to 10 times/second by default.

\* Analog Sticks must be returned to the neutral position before changing to the next turbo speed.



### Caution

**Parents/Guardians: Please read the following information carefully.**

- This product contains small parts. Keep away from children under 3 years old.
- Keep this product away from small children or infants. Seek medical attention immediately if any small parts are swallowed.
- Keep the product away from dusty or humid areas.
- Do not use this product if it has been damaged or modified.
- Do not get this product wet. This may cause an electric shock or malfunction.
- Do not place this product near heat sources or leave under direct sunlight for an extended period. Overheating may cause malfunction.
- Do not apply strong impact or weight on the product.
- Do not disassemble, modify or attempt to repair this product.
- If product needs cleaning, use only a soft dry cloth.  
Do not use any chemical agents like benzene or thinner.
- Do not use this product for anything other than its intended purpose.

We are not responsible for any accidents or damages in the event of use other than the intended purpose.

## Main Features

External Dimensions 2.5in x 5.5 in x 1.6 in

Weight L approx 2.5 oz, R approx 2.5 oz

Connection method Rail connector (\* This product is not wireless)

The packaging must be retained since it contains important information.

## PRODUCT DISPOSAL INFORMATION

Where you see this symbol on any of our electrical products or packaging, it indicates that the relevant electrical product or battery should not be disposed of as general household waste in Europe. To ensure the correct waste treatment of the product and battery, please dispose of them in accordance with any applicable local laws or requirements for disposal of electrical equipment or batteries. In so doing, you will help to conserve natural resources and improve standards of environmental protection in treatment and disposal of electrical waste. Applicable to EU countries and Turkey only.



EU and Turkey only

## THE FCC WANTS YOU TO KNOW

This device complies with part 15 of the FCC Rules. Operation is subject to the following two conditions: (1) This device may not cause harmful interference, and (2) this device must accept any interference received, including interference that may cause undesired operation.

**NOTE:** This equipment has been tested and found to comply with the limits for a Class B digital device, pursuant to part 15 of the FCC Rules. These limits are designed to provide reasonable protection against harmful interference in a residential installation. This equipment generates, uses and can radiate radio frequency energy and, if not installed and used in accordance with the instructions, may cause harmful interference to radio communications. However, there is no guarantee that interference will not occur in a particular installation. If this equipment does cause harmful interference to radio or television reception, which can be determined by turning the equipment off and on, the user is encouraged to try to correct the interference by one or more of the following measures:

- Reorient or relocate the receiving antenna.
- Increase the separation between the equipment and receiver.
- Connect the equipment into an outlet on a circuit different from that to which the receiver is connected.
- Consult the dealer or an experienced radio/TV technician for help.

## Simplified Declaration of Conformity

Hereby, HORI declares that this product is in compliance with Directive 2014/53/EU.

The full text of the EU declaration of conformity is available at the following internet address:

<https://hori.co.uk/consumer-information/>

For UK: Hereby, HORI declares that this product is in compliance with the relevant statutory requirements.

The full text of the declaration of conformity is available at the following internet address:

<https://hori.co.uk/consumer-information/>

## US

### Warranty

HORI warrants to the original purchaser that the product purchased new in its original packaging shall be free of any defects in material and workmanship for a period of 1 year from the original date of purchase. If the warranty claim cannot be processed through the original retailer please contact HORI customer support directly at [info@horiusa.com](mailto:info@horiusa.com). Please visit <http://stores.horiusa.com/policies/> for warranty details.

## EU

### Warranty

For all warranty claims made within the first 30 days after purchase, please check with the retailer where the original purchase was made for details. If the warranty claim cannot be processed through the original retailer or for any other inquiries pertaining to our products, please contact HORI customer support directly at [info@horiuk.com](mailto:info@horiuk.com).




This is not a wireless controller.  
Can only be used in portable mode.  
Does not have the following functions.  
Gameplay that require the following features may not work as desired with the Split Pad Compact.

- gyro sensors
- accelerometer
- motion sensors
- player LED
- HD rumble
- notification light
- NFC touchpoint

The image on the package may differ from the actual product.  
The manufacturer reserves the right to change the product design or specifications without notice.  
HORI and HORI logo are registered trademarks of HORI.  
Nintendo Switch™ is a trademark of Nintendo. © 2022 Nintendo.

---

## Documents / Resources

	<p><a href="#">HORI NSW-465U Split Pad Compact Controller</a> [pdf] Instruction Manual NSW-465U Split Pad Compact Controller, NSW-465U, Split Pad Compact Controller, Pad Compact Controller, Compact Controller, Controller</p>
---	--

## References

- [Consumer Information](#)
- [User Manual](#)