



Horeko Operator And Printer User Guide

[Home](#) » [Horeko](#) » Horeko Operator And Printer User Guide 

horeko

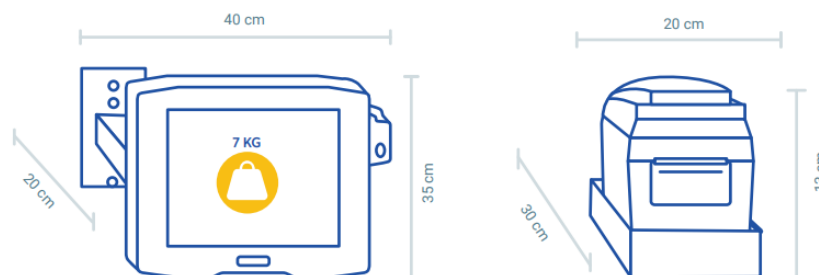
Installation of your
Operator and printer

Contents

- 1 Operator And Printer
- 2 Mounting
- 3 Documents / Resources
- 3.1 References

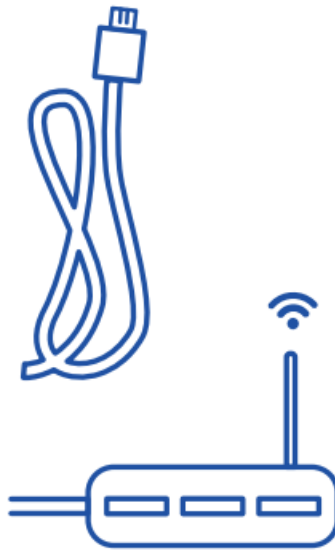
Operator And Printer

Your preparations



Find a space for your Operator and printer

Find a suitable place for the Operator and printer. Look for a central location in the kitchen or near your mise-en-place station. The Operator should be mounted at eye level or just below. The Operator is heavy and has to be installed on a brick or concrete wall.



Internet connection

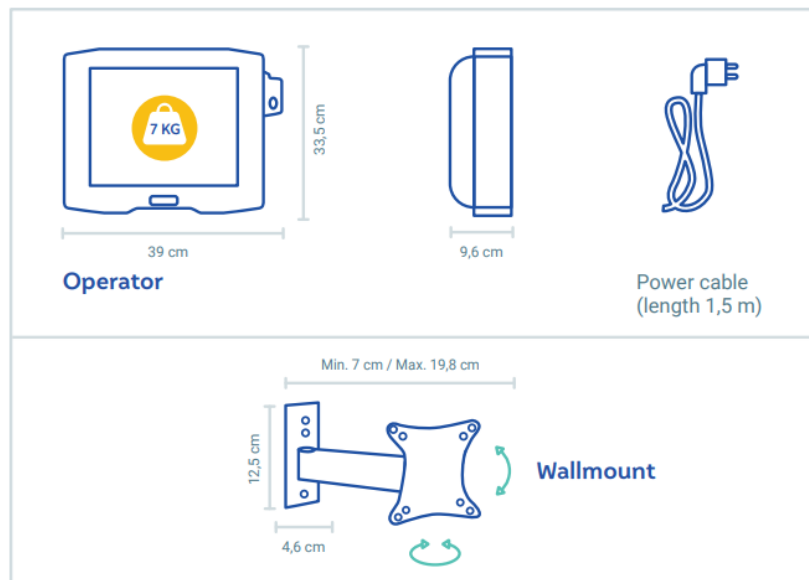
Cable for internet (UTP Patch)
Connection to modem/router

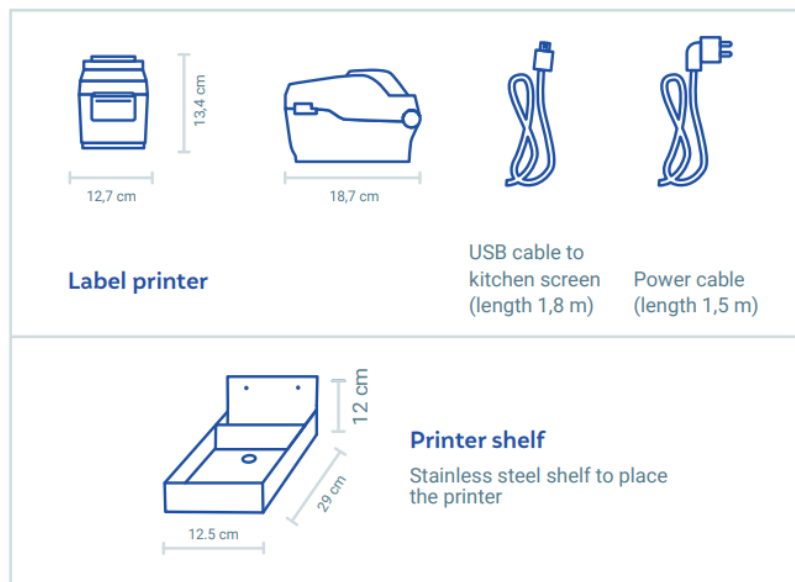


Power supply

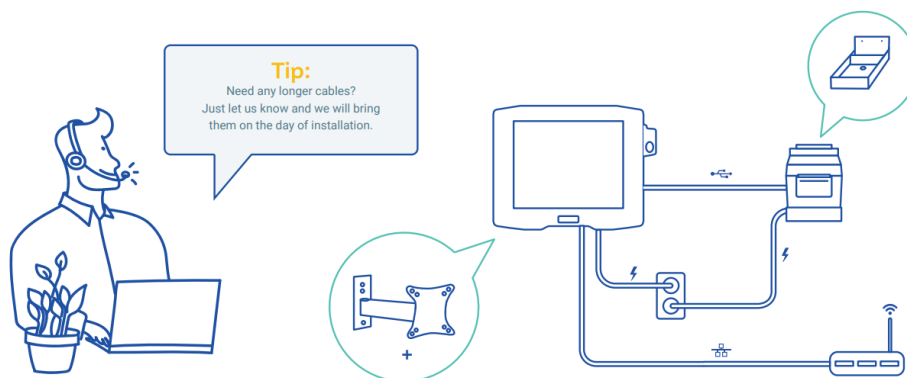
2 sockets are required, one close to the wallmount. One close to the printer
* You should have this available and working before installation.

This is what we are bringing and installing





Mounting



horeko

Documents / Resources

	<p>Horeko Operator And Printer [pdf] User Guide Operator And Printer, Operator And Printer, And Printer, Printer</p>
--	--

References

- [User Manual](#)

Manuals+. Privacy Policy

This website is an independent publication and is neither affiliated with nor endorsed by any of the trademark owners. The "Bluetooth®" word mark and logos are registered trademarks owned by Bluetooth SIG, Inc. The "Wi-Fi®" word mark and logos are registered trademarks owned by the Wi-Fi Alliance. Any use of these marks on this website does not imply any affiliation with or endorsement.