

Hopeway Wi-Fi Camera App User Guide

Contents

1 “Hopeway”Camera Start Guide

1.1 Download APP

1.2 Register and Login

1.3 Add WiFi camera

1.4 Function introduction

1.4.1 Introduction to the device list function

1.4.2 Introduction to the player interface

1.5 Cloud services

1.5.1 Steps to purchase cloud storage

2 Documents / Resources

2.1 References

3 Related Posts

“Hopeway”Camera Start Guide

Download APP

Method 1: You can scan the QR code and download the “Hopeway”.



Method 2:

Android:

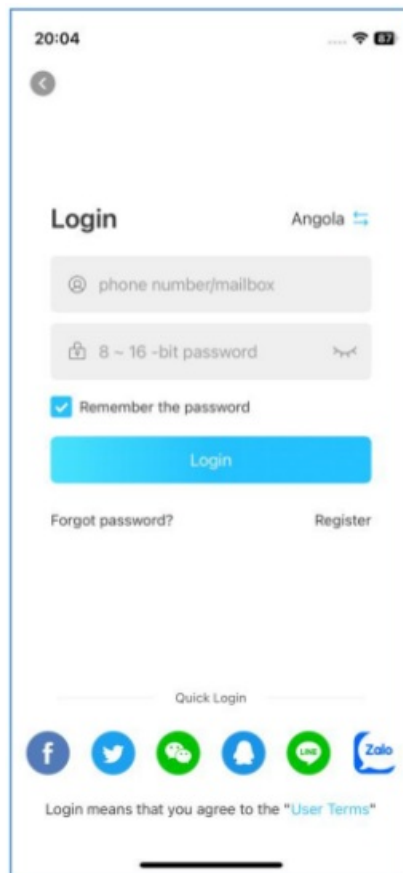
Search “Hopeway” and download from Google Play.

iPhone:

Search “Hopeway” and download from App Store.

Register and Login

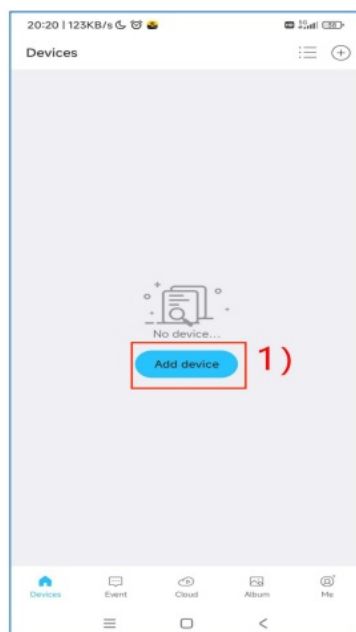
Support email and third-party registration and login.



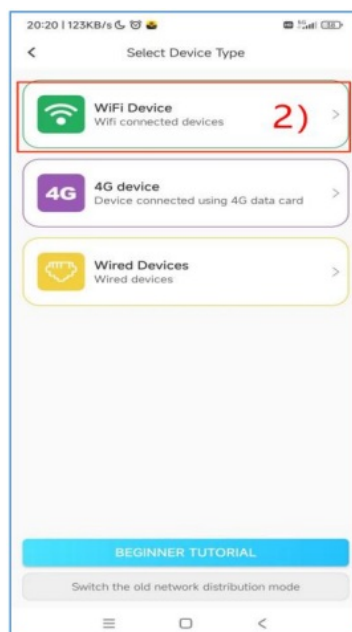
Picture 1

Add WiFi camera

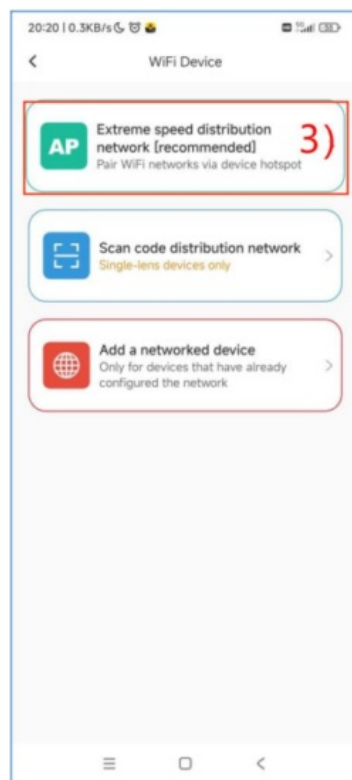
- (1) Power on the camera, and wait for the camera prompts “Please configure WiFi” or the light flashes.
- (2) Run the app “Hopeway” and follow the steps shown in Picture 2 Picture 5 to configure the network.
- (3) After the camera is successfully connected to the Internet, the camera will be automatically bound to your account. After setting the name, you can complete the operation of adding the camera.
- (4) Click the play button in the device list to watch the video.



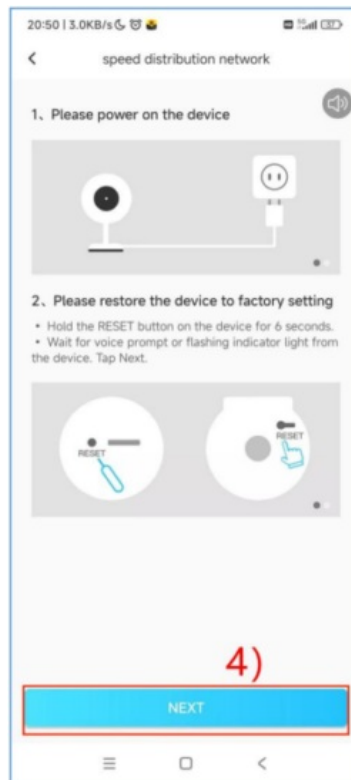
Picture 2



Picture 3



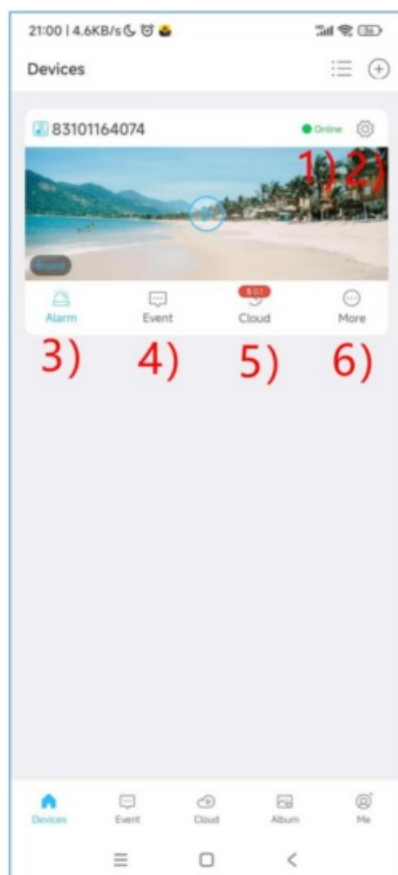
Picture 4



Picture 5

Function introduction

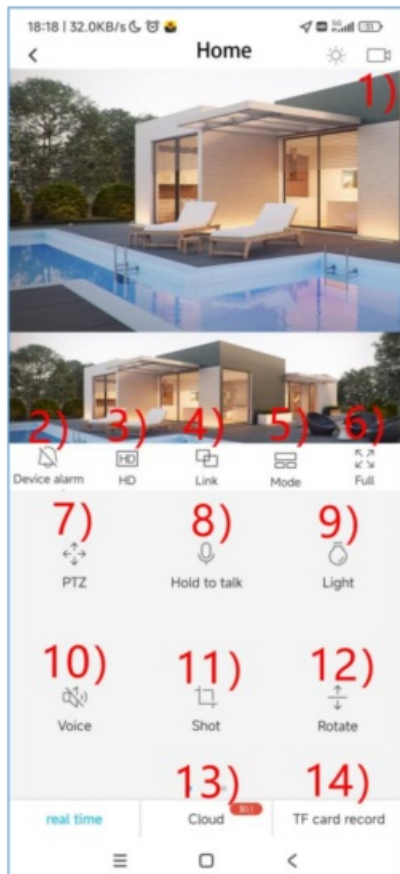
Introduction to the device list function



- 1) Online status
- 2) Device settings
- 3) Quick alarm

- 4) View the alarm message
- 5) Cloud service
- 6) More: Click on the More button to share devices.

Introduction to the player interface



- 1) Record the real-time video and save it to the phone.
 - 2) Turn the camera alarm sound on or off.
 - 3) Switch video resolution.
 - 4) Gun ball linkage switch.
 - 5) view modes.
 - 6) Full screen.
 - 7) PTZ: Control the camera to rotate up, down, left and right (requires camera support).
 - 8) Hold to talk: Press and hold the button for intercom.
 - 9) Light: Set the night vision light on mode (requires camera support)..
 - 10) Voice: Hear the sound of the camera.
 - 11) Shot: Take screenshot photos.
 - 12) Rotate: Set the camera to flip vertically.
 - 13) Watch cloud recordings.
 - 14) Watch TF card recordings.
- Note: You can obtain more functions by sliding left and right.

Cloud services

What is cloud storage?

Cloud storage is a safe and reliable cloud video storage service for smart camera users.

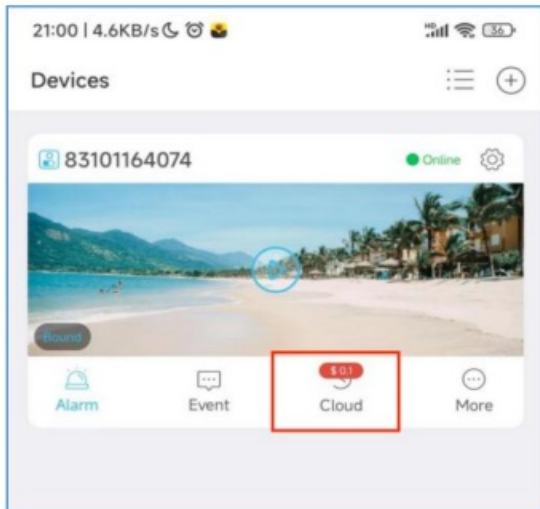
Why buy cloud storage

- (1) Stable and reliable: Cloud recording will not lose data due to damage to the memory card, and there is no need to worry about the leakage of private data due to the memory card being stolen.
- (2) Data security: Cloud video will not be lost due to the camera being stolen or damaged. When the camera is stolen or damaged, the previous video will remain in the cloud within the validity period of the cloud video. The

owner can view and download it anytime, anywhere. For “video evidence that cannot be stolen”.

Steps to purchase cloud storage

Click the “Cloud” button in the device list to enter the cloud storage package interface and then You can buy Cloud storage.



FCC Warning:

This equipment has been tested and found to comply with the limits for a Class B digital device, pursuant to part 15 of the FCC Rules. These limits are designed to provide reasonable protection against harmful interference in a residential installation. This equipment generates, uses and can radiate radio frequency energy and, if not installed and used in accordance with the instructions, may cause harmful interference to radio communications. However, there is no guarantee that interference will not occur in a particular installation. If this equipment does cause harmful interference to radio or television reception, which can be determined by turning the equipment off and on, the user is encouraged to try to correct the interference by one or more of the following measures:

- Reorient or relocate the receiving antenna.
- Increase the separation between the equipment and receiver.
- Connect the equipment into an outlet on a circuit different from that to which the receiver is connected.
- Consult the dealer or an experienced radio/TV technician for help.

Caution: Any changes or modifications to this device not explicitly approved by manufacturer could void your authority to operate this equipment.

This device complies with part 15 of the FCC Rules. Operation is subject to the following two conditions:

(1) This device may not cause harmful interference, and (2) this device must accept any interference received, including interference that may cause undesired operation.


This equipment complies with FCC radiation exposure limits set forth for an uncontrolled environment. This equipment should be installed and operated with minimum distance 20cm between the radiator and your body.

Documents / Resources

"Hopeway"Camera Start Guide

Download APP


Method 1: You can use the QR code and download the Hopeway.



Method 2:
Android:
Search "Hopeway" and download from Google Play.
iPhone:
Search "Hopeway" and download from the App Store.

Register and Login

Register email address and password, registration and login.



Hopeway Wi-Fi Camera App [pdf] User Guide

2BK7T-KB-B36, 2BK7TKBB36, Wi-Fi Camera App, Camera App, App

[Hopeway Wi-Fi Camera App](#) [pdf] User Guide
2BK7T-KB-B36, 2BK7TKBB36, Wi-Fi Camera App, Camera App, App

References

Manuals+, Privacy Policy

This website is an independent publication and is neither affiliated with nor endorsed by any of the trademark owners. The "Bluetooth®" word mark and logos are registered trademarks owned by Bluetooth SIG, Inc. The "Wi-Fi®" word mark and logos are registered trademarks owned by the Wi-Fi Alliance. Any use of these marks on this website does not imply any affiliation with or endorsement.