



Hopeace Keyless Entry Door Lock with App Control Instruction Manual

[Home](#) » [Hopeace](#) » Hopeace Keyless Entry Door Lock with App Control Instruction Manual 

Contents

- [1 Hopeace Keyless Entry Door Lock with App Control](#)
- [2 Package Introduction](#)
- [3 Screws](#)
- [4 Device Operation](#)
 - [4.1 Optional Functions](#)
- [5 APP Operation](#)
- [6 Documents / Resources](#)
 - [6.1 References](#)
- [7 Related Posts](#)

Hopeace

Hopeace Keyless Entry Door Lock with App Control

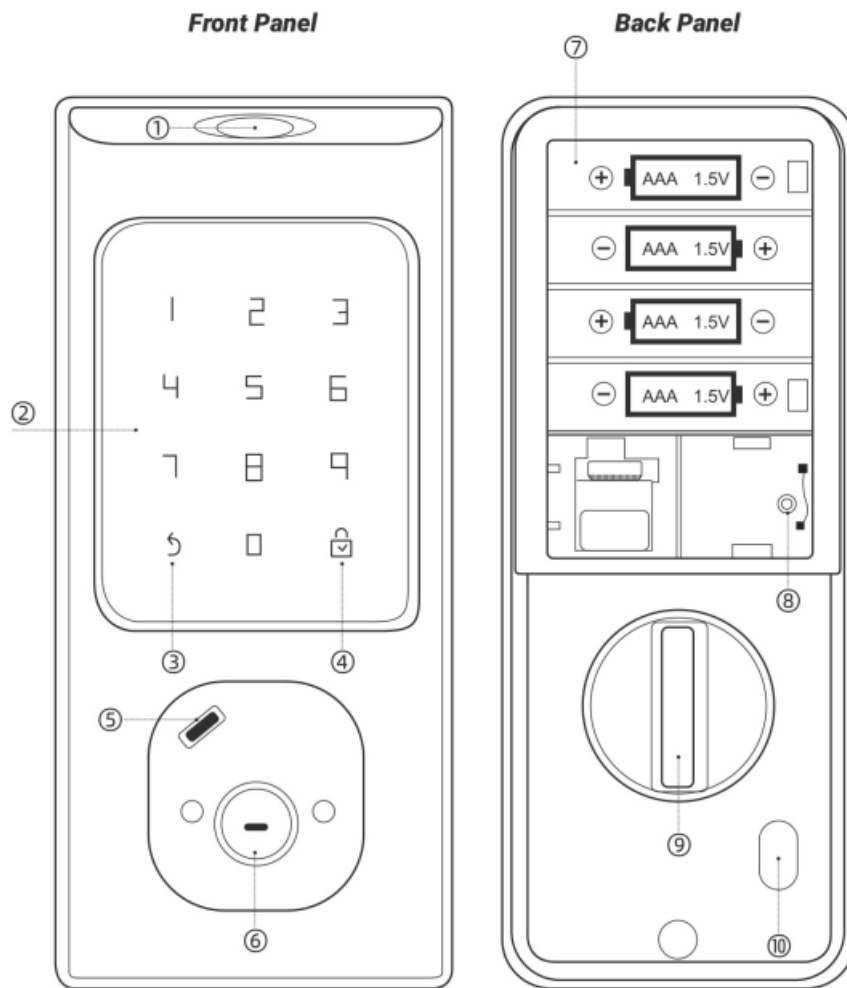


Operating Manual of American-standard Lock

Please read and understand the Operating Manual before use.

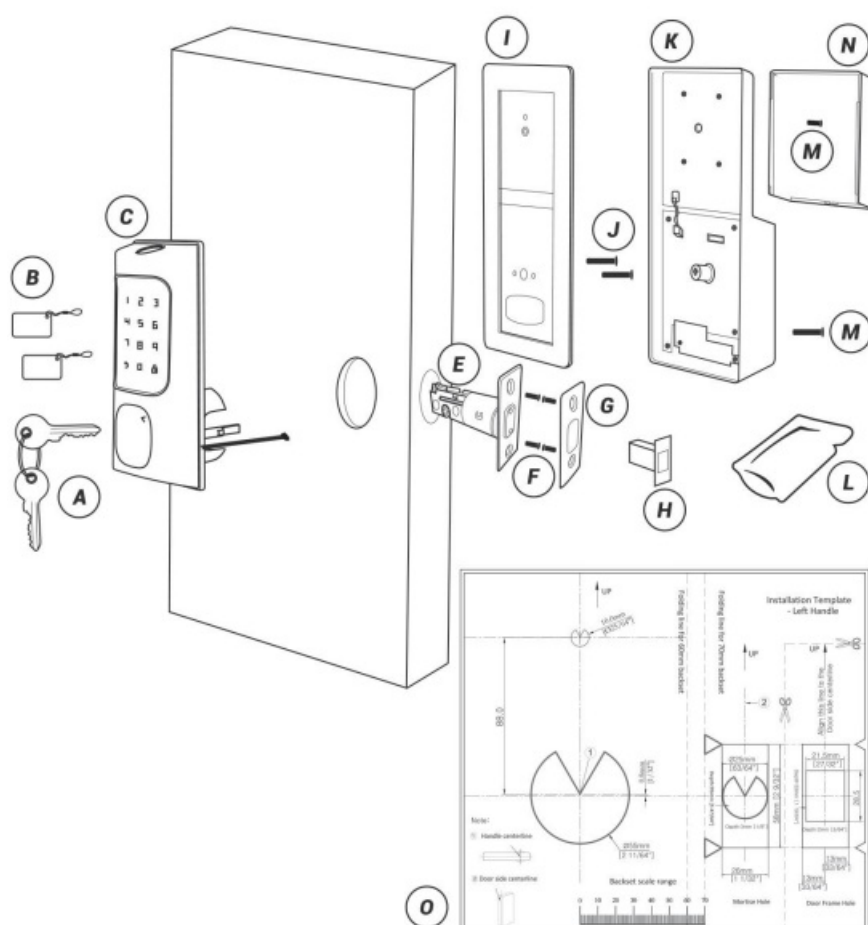
Caution: Please take along an emergency key or put it in a safe place outside.

1. Fingerprint Sensor
2. Keyboard/Card Sensor
3. Return/Doorbell
4. Confirm
5. Type-C USB Port
6. Keyhole
7. Battery Groove
8. Reset Button
9. Thumb Turn: Manually ON/OFF
10. Normal Open/Close



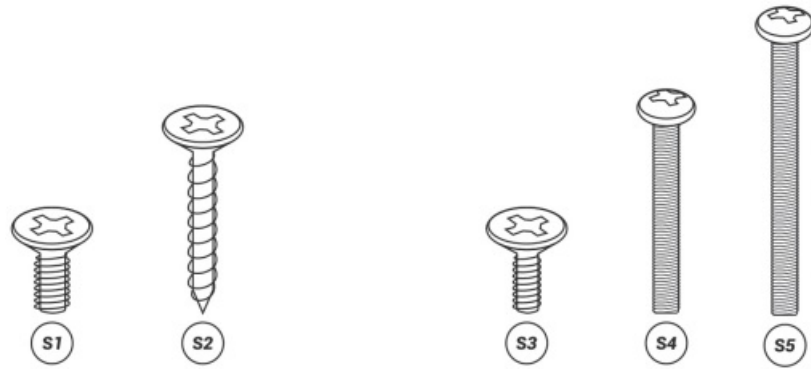
Package Introduction

<i>Part</i>	<i>Description</i>	<i>Quantity</i>
A	Key	2
B	IC Card	2
C	Front Panel	1
E	Latch	1
F	Wood Screw Set	1
G	Strike Plate	1
H	Plastic Lock Groove	1
I	Mounting Plate	1
J	Long Screw Set	1
K	Back Panel	1
L	Spare Screw Set	1
M	Long & Short Screw Set	1
N	Battery Cover	1
O	Size Reference	1



Screws

NOTE: SCREWS FOR DOORS WITH A THICKNESS OF 35 TO 55 MM ARE INCLUDED IN THE STANDARD PACKAGE.



- **F:** Wood Screw Set
- **S1:** M5X10mm 4x
- **S2:** M4X20mm 4x
- **M:**Standard screws set
- **S3:** M4X10mm 1x
- **S4:** M4X25mm 1x
- **S5:** M4X35mm 2x
(35mm<door thickness<55mm)
- **L:** Spare Screw Set
- **S1:** M5X10mm 1x
- **S2:** M4X20mm 1x
- **S3:** M4X10mm 1x
- **S4:** M4X25mm 1x
- **S5:** M4X35mm 1x

Important Notes

Please read this User Manual carefully or contact the Customer Care for any queries.

It is recommended that installation be carried out by a professional technician to prevent any potential service charges that can occur due to incorrect installation.

Please make sure no strong magnetic object closes to the smart lock.

Four alkaline AA batteries (not included) are required to power on the device. Non- alkaline and rechargeable batteries are NOT RECOMMENDED"

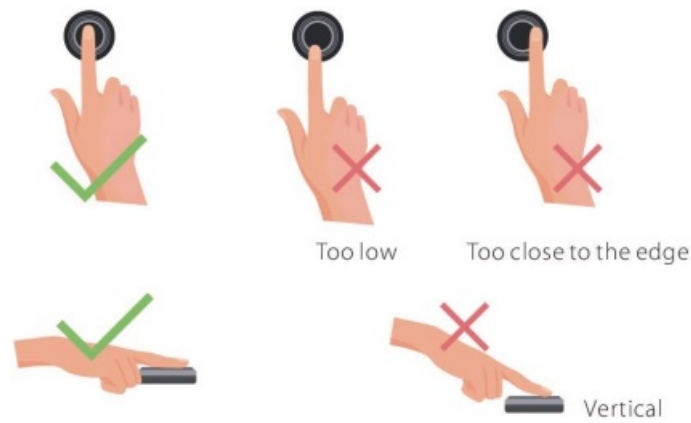
Do not remove the batteries from the lock when it is working.

Batteries must be replaced immediately when the lock prompts the "The battery is used up, please replace it warning.

For manual unlocking, the lock is also provided with mechanical keys. Please keep the keys in a safe place.

Fingerprint positioning tips:

Recommended fingers: Index, middle, orring fingers; avoid using the thumb or pinky, as it is difficult to accurately press onto the fingerprint reader using those.



Note: Please use the correct method when pressing your fingers onto the fingerprint reader for registration and identification. Our company will assume no liability for recognition issues that may result from incorrect usage of the product. We reserve the right of final interpretation and modification concerning this point.

Tools Needed

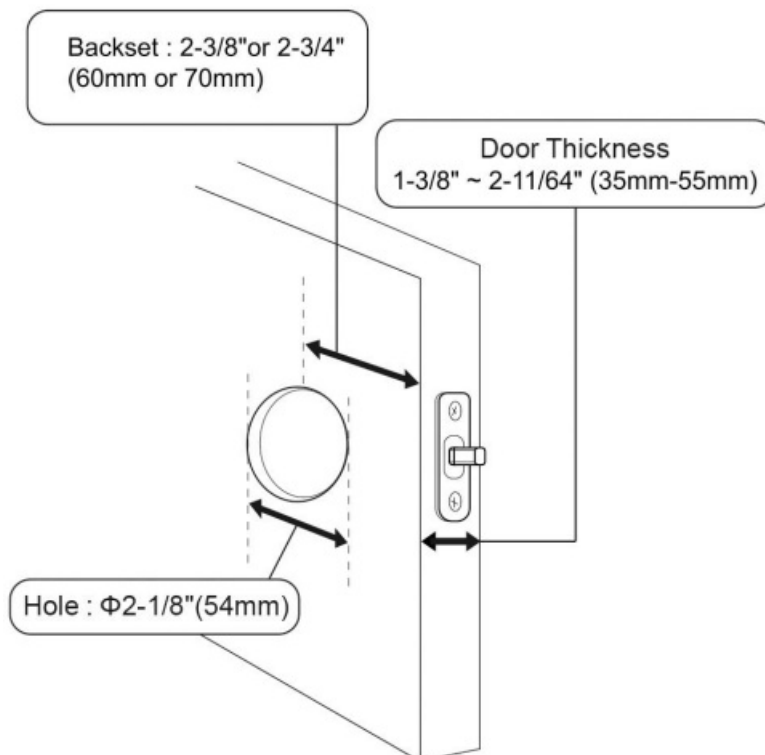
Screwdriver; Tape Measure; Pencil; Other Chiseling Tools; Size Reference Card.

Check Door Dimensions

1. Backset Determination

Backset is a distance from door edge to center of hole on door face.

Backset can be 2-3/8" or 2-3/4" (60mm or 70mm).



2. Hole Diameter

Using the marks as guide to drill holes $\frac{3}{8}$ " (10mm) Fasten Smart door lock(Optional)

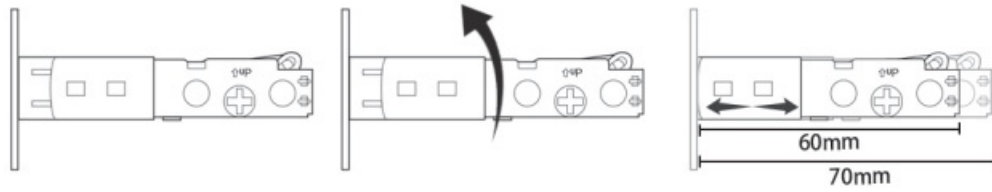
Hole : 2-1/8" (54mm)

3. Door Thickness

The door thickness between 1-3/8" and 2- 11/64" (35mm-55mm) are all suitable for the keypad deadbolt handle set.

Installation Steps

1. Adjust Latch Length



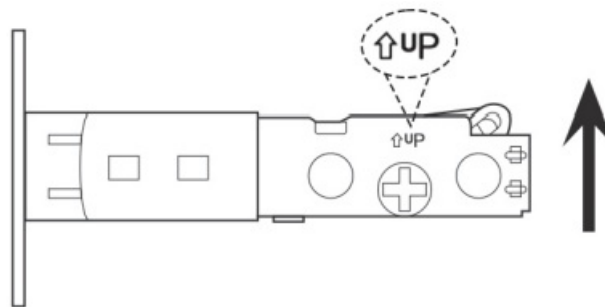
Note: When performing this operation, please take protective measures and be careful of the metal edge not to injure yourself.

Hold the right part of the lock tongue with your right hand and turn the left iron piece counterclockwise (about 15 degrees) with your left hand.

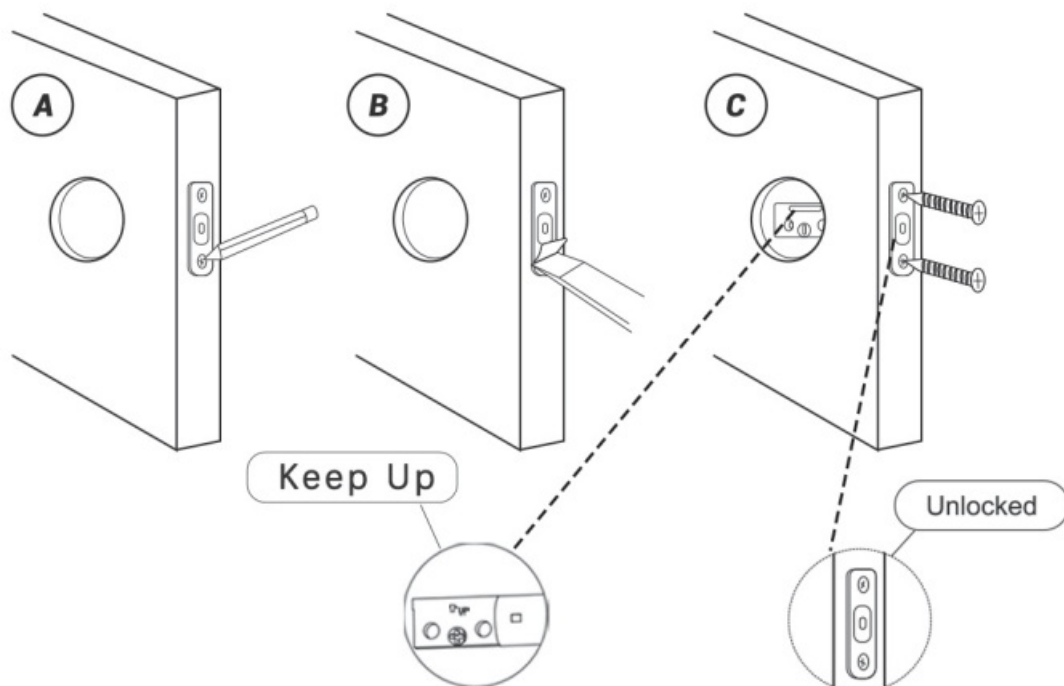
When the rectangular position of the 2-3/8" (60mm) tick mark changes from convex to concave (as shown), slowly extend the locking latch, and then turn clockwise the inside of the locking latch back to the rectangular position of 2-3/4" (70mm) scale.

2. Install Latch

Note: Need to keep this way up when inserting the latch.



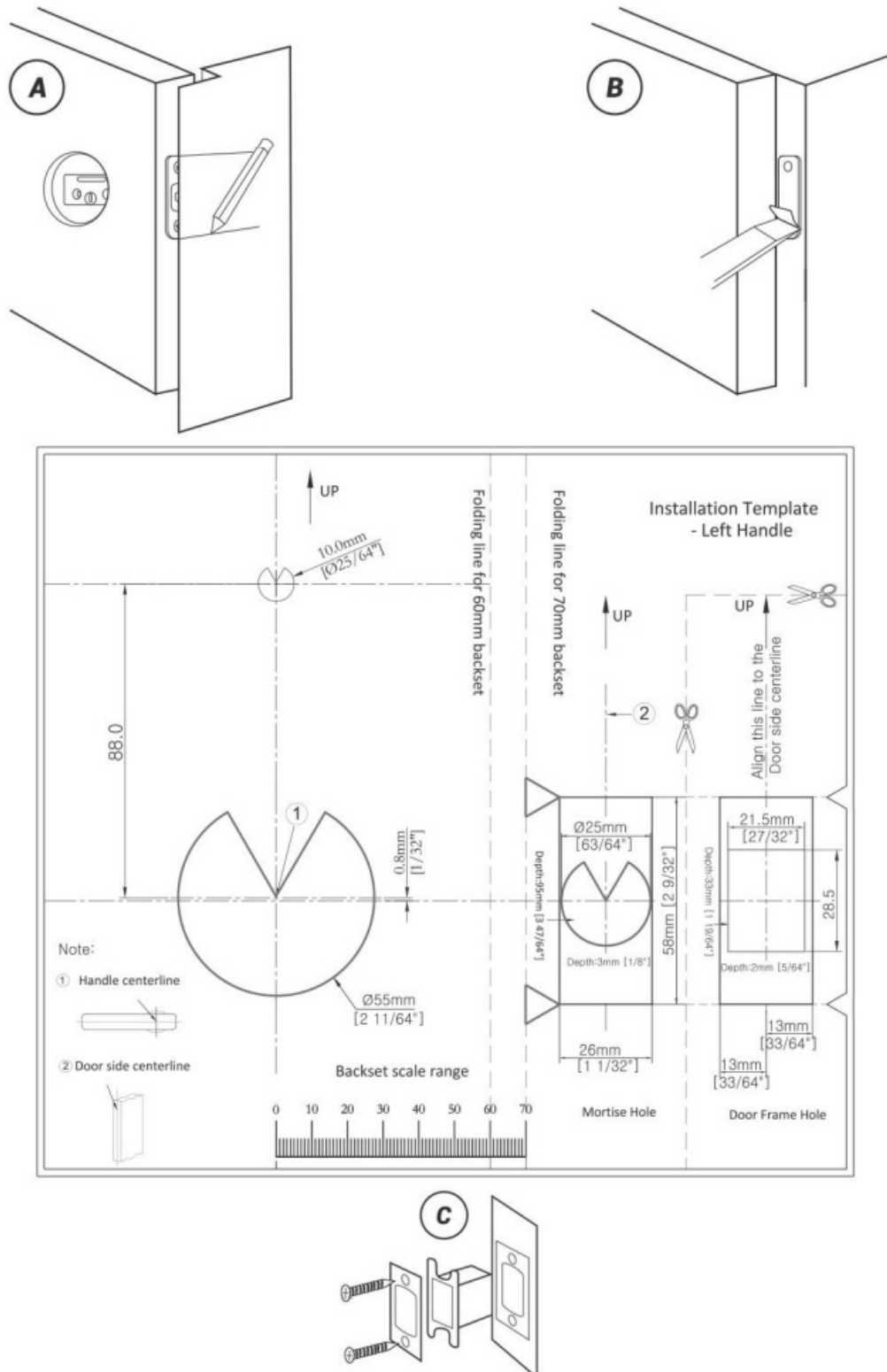
Insert the latch and ensure it is parallel to the door face.



- **A. Mark** the outline of the plate, then take out the latch.
- **B. Chisel** 1mm-2mm deep along the outline to allow the plate to be aligned with the door edge. (If the door size is suitable without chiseling.)

- **C. Insert** the latch into the door, use 2 F: Wood Screw Set to secure latch.

3. Install Strike Plate



- **A. Identify** the center of the plate: Close the door to lay the latch bolt against the door frame. Mark the outline of the plate onto the doorjamb.
- **B. Drill** 25mm deep at the intersection of the horizontal and vertical lines of the plate. Chisel 1mm-2mm deep along the strike plate outline to allow the strike plate to be aligned with the door frame. (If the door size is suitable without chiseling.)
- **C. Insert** the plastic lock groove and the strike plate into the doorjamb and tighten with F: Wood Screw Set.

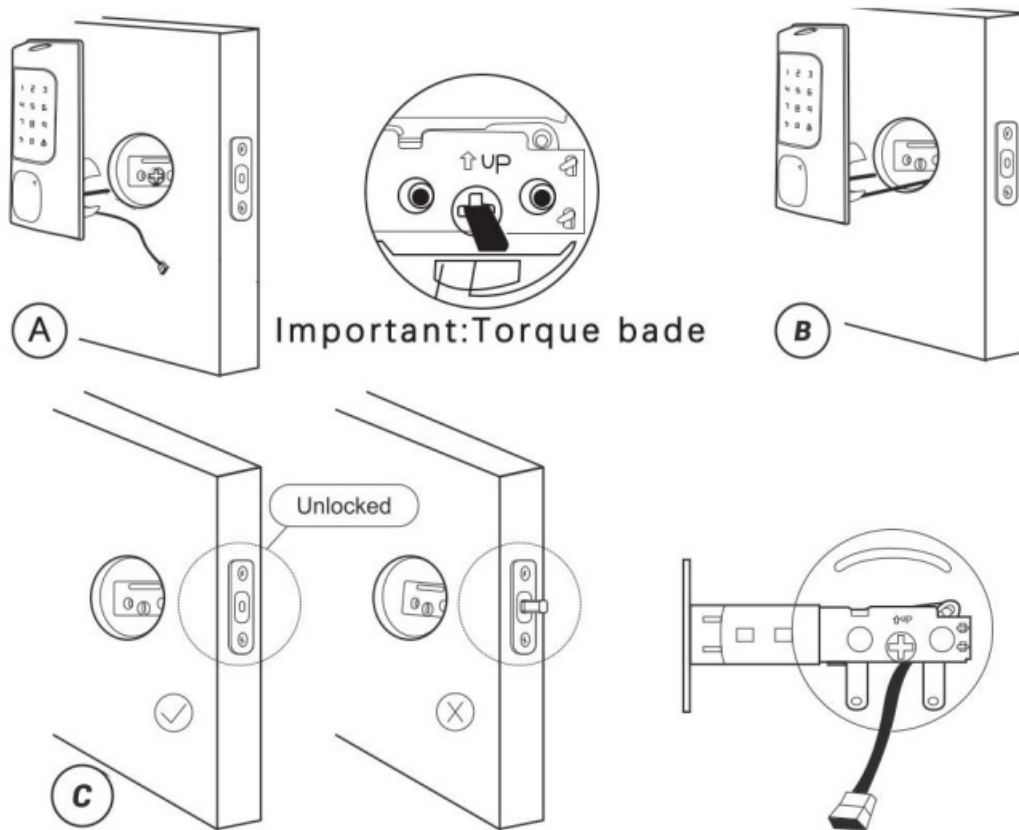
4. Install Front Panel

- **A. IMPORTANT:** Latch must be in unlock position(the state in which the key can be pulled off),and place

the cable under the latch. Make sure the (torque blade) is in horizontal state.

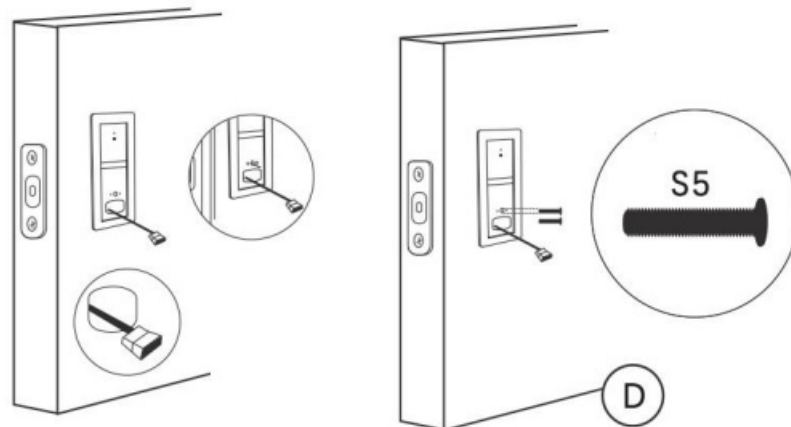
- **B.** Let the cable and the (torque blade) go through the holes on the latch, as in the picture.

Note: Depending on the size of the door thickness, the (torque blade) can be cut short using pliers



- **C.** Pass the Cable and the (torque blade) to mounting plate as in the picture.
- **D.** Use the 2 S5 screws to attach the mounting plate to the front panel. Lorem Ipsum

Note: Screws for doors with a thickness of 35 to 55 mm are included in the standard package.



5. Install Back Panel

- **A.** Remove the battery cover and back cover (push the back cover up first)
- **B.** Connect the cable and ensure a tight cable connection.
- **C.** Rotate the (Thumb turn) in a vertical position and insert the (torque blade) into the interior assembly lock switch.
- **D.** Use a short screw to tighten the inner battery groove on the back panel, then use a long screw to attach the back panel to the door
- **M:** Standard screws set
- **E.** After installing the back panel, rotate the (thumb turn) to test if it works with the latch.


If that doesn't work, take out the back panel and make sure the (torque blade) is in horizontal state and

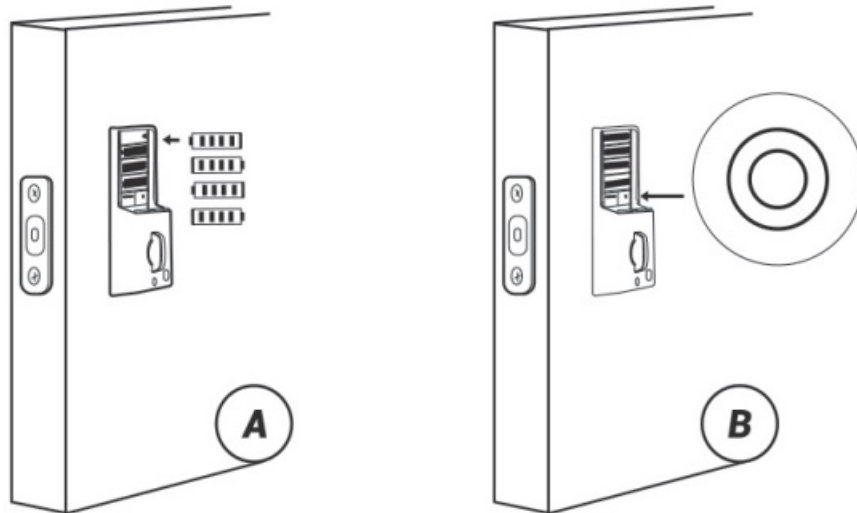
try to install it again until it works with the latch.

6. Insert Battery and Install Back Battery Cover

- **A.** While the door is open and unlocked, insert 4 (AA) 1.5V Alkaline batteries into the back panel.
- **B.** Press and hold the reset button on the back panel.
- **C.** Keep holding the reset button until you hear “Factory reset successfully “.

The lock will automatically go into the locked position. This is to let the smart lock memorize the orientation of the door.

- **D.** If the door can not be opened, it may be the wrong door opening direction installation please press the number key “7” + ““, it will automatically adapt to the left/right door opening direction



Notes:

- **A.** The initial password is 666666
- **B.** Alkaline batteries are recommended to stabilize the power supply. If you don't use alkaline, battery performance will be reduced greatly.
- **C.** All settings will be saved even if all batteries are completely discharged. Having a Type-C USB port can power the lock and activate the keyboard.

Device Operation

(How to Finish the Settings without APP)



Preparations

1. Complete the hardware installation.
2. Install 4 AAA batteries.
3. (After the first hardware installation, be sure to restore the factory settings) Press and hold the reset button in the lower right corner of the battery compartment for 5 seconds.

Note:

Wake up the keyboard by touching and holding it for 2 seconds.


If the unlock fails 10 times, the system will automatically lock for 3 minutes.

Press the keyboard "  " and "  " will have a voice broadcast numeric keypad use strategy.

1. How to Add Fingerprints, Passwords, and IC Cards

Note: The local input fingerprint, password, and IC card can all be administrators. The first three users are administrators.

Press "2" and then "  " to add:



1. Add Fingerprint: Enter your fingerprint as prompted. Each fingerprint need to be entered 5 times. Note that to ensure the integrity of the fingerprint, you should enter a different part of your fingerprint each time.
2. Add Password: Enter a 6-digit password. Password registration needs to be entered 2 times.
3. Add IC Card: Hold the IC card close to the card sensing area until you hear a sound indicating success.
4. Press the  key to quit adding users.

Optional Functions


1. Automatic Locking

After 10 failures to open, the system will automatically lock for 3 minutes.


2. Normal Open Mode






Press "3" and then "  " to enter the Normal Open mode. (Operation timeout: 10 seconds) If you have added an administrator, it requires verification of administrator information. Press the  key to quit the Normal Open mode.

3. Voice Language Switch


Press "4" and then "  " to switch the voice language between Chinese and English. (Operation timeout: 10 seconds)

4. Volume Adjustment

Press "5" and then "  " to enter volume setting.
(Operation timeout: 10 seconds)

Then, press "0" and "  " to mute the sound; press "1" and "  " to choose the lowest volume; press "2" and "  " to choose low volume; press "3" and "  " to choose high volume; press "4" and "  " to choose the highest volume.

5. Door Opening Direction (must be set in initialization state)

Press "7" and then "  " to set the door to open left or right.

1. **A.** If the deadbolt is locked, the calibration is done automatically and all lights go out.
2. **B.** If the deadbolt is unlocked, turn the Thumb Turn left or right to lock the deadbolt and the lock will automatically calibrate. All lights will go out after calibration succeeds.
3. **C.** After calibration, users can unlock once with fingerprint verification.

6. Factory Reset

Method 1: Press and hold the reset button in the lower right corner of the battery compartment for 5 seconds to restore factory settings.

Method 2: Press “6” and then “ ” to enter the factory reset after disconnecting all Bluetooth pairings. (Operation timeout: 10 seconds)

Note: After this operation, the data entered in the app will all be invalid.

APP Operation

Preparations

1. Complete the hardware installation.
2. Install 4 AAA batteries.

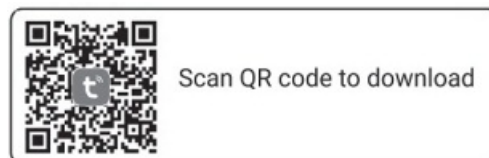
(After the first hardware installation, be sure to restore the factory settings) Press and hold the reset button in the lower right corner of the battery compartment for 5 seconds.

Note:

Wave up the keyboard, please touch and hold the keyboard for 2 seconds.
If the unlock fails 10 times, the system will automatically lock for 3 minutes.

1. Download and Install the TUYA App
 1. Search “TUYA ” in App store or Google Play, or scan the following QR code to download and install the APP, or update it to the latest version.

Scan QR code to download



Note:

1. Your iOS devices must be running iOS 11 or above to download the app smoothly.
2. Your Android devices must be running Android 7.1 or above to download the app smoothly.

Operating Manual of American-standard Lock

Please read and understand the Operating Manual before use.

Caution: Please take along an emergency key or put it in a safe place outside.

Documents / Resources



[Hopeace Keyless Entry Door Lock with App Control](#) [pdf] Instruction Manual
Keyless Entry Door Lock with App Control, Keyless, Entry Door Lock with App Control, Door Lock with App Control, Lock with App Control

References

- [User Manual](#)