



## hoobabi 20230112 Inflatable Pool with Seats User Guide

[Home](#) » [hoobabi](#) » hoobabi 20230112 Inflatable Pool with Seats User Guide 

### Contents

- [1 hoobabi 20230112 Inflatable Pool with Seats](#)
- [2 Package Contents](#)
- [3 Safe Use of the Pool](#)
- [4 Get Started](#)
- [5 Storage and Maintenance](#)
- [6 Documents / Resources](#)
  - [6.1 References](#)
- [7 Related Posts](#)

# Hoobabi

hoobabi 20230112 Inflatable Pool with Seats



## Package Contents

- 1 x pool
- 2 x Repair Patch
- 1 x User Manual

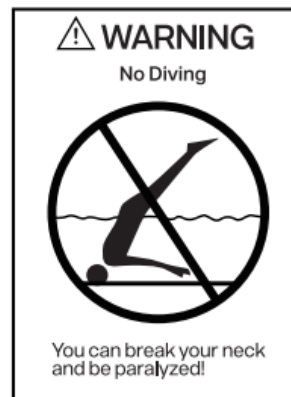
### IMPORTANT

READ AND FOLLOW ALL SAFETY INFORMATION AND INSTRUCTIONS.

KEEP FOR FUTURE REFERENCE TO FOLLOW THESE WARNINGS AND INSTRUCTIONS CAN RESULT IN SERIOUS INJURY OR DEATH TO USERS. ESPECIALLY CHILDREN.

- This manual addresses some common risks but not all danger of water recreation. Always be cautious, use common sense and wise judgment when enjoying water activity.
- Please read this manual thoroughly before use of the product and retain it for future reference.

### WARNING



Never leave your child unattended- drowning hazard.

- Children under 5 are at the highest risk of drowning.
- Closely watch children who are in or near this pool.
- Empty pool or prevent access when not in use.
- This product is intended for the use of people aged 3 and above.
- Only for domestic use. Only for outdoor use.
- Children can be drowned in very small amount of water. Empty the pool when not in use.
- Keep children under the direct sight. Actively supervise them when they are in or near the pool or when you are filling or emptying the pool. When searching for a missing child, check the pool first, even if he/she is thought to be in the house.

- Drain water inside the pool after use or before storage to prevent the pool from collecting water from rain or other sources.
  - Set up a fence or other approved barriers around the pool as per the local law and regulations to avoid unsupervised children accessing the pool.
- Never dive in or jump into the pool to avoid injury or death.

## **Safe Use of the Pool**

- Encourage children to learn swimming.
- Learn Lifesaving knowledge (e.g. Cardiopulmonary Resuscitation – CPR) and update it regularly, which will make a tremendous difference during an emergency.
- Instruct all users including children on how to handle emergencies.
- Do not use the product after drinking or during medication.
- Please remove any cover completely before use if you have covered the pool.
- Change water in the pool regularly to prevent water-related illnesses.
- Do not add any undiluted chemicals into the pool to avoid injury to humans.
- If any chemicals are occasionally used to reduce the frequency of water replacement, follow instructions from the manufacturer closely and dilute the chemicals properly. Keep the chemicals out of reach of children.
- Make sure the installation and use of power appliances near the pool conform to local regulations.
- Always remove any means of access from the pool and store it out of reach of children.
- The use of accessories not recommended by the manufacturer may lead to injury or property loss.
- Keep power cable, radio, speaker or any other electric appliances away from the pool. Never place the pool near or under the electric lines.
- Always read and follow warnings and safety signs on the pool.

## **Prevent Young Children from Drowning**

- Install fencing or approved barriers around all sides of the pool. State or local laws or codes may require fencing or other approved barriers.
- Check state or local laws and codes before setting up the pool.
- Drowning occurs silently and quickly. Assign an adult to supervise pool and wear provided water watcher tag.
- Keep children in your direct sight when they are in or near the pool and when you are filling and emptying the pool.
- When searching for a missing child, check the pool first, even if you think your child is in the house.

## **Prevent Young Children from Gaining Access to the Pool**

- Remove pool ladders before leaving the pool. Toddlers can climb the ladder and get into the pool.
- Position furniture away from the pool so that children cannot climb and gain access to the pool.
- When leaving the pool, remove floats and toys from the pool that might attract a child.

## **Be Prepared to Respond to an Emergency:**

- Keep a working phone and list of emergency numbers near pool.

- Become certified in cardiopulmonary resuscitation(CPR)so you can respond to an emergency.
- Pool that presents a drowning hazard even during the filling and draining of the pool.

Maintain constant supervision of children and do not remove any safety barriers until the splash pod is completely empty and stowed away.

## CAUTION

- Assembly and disassembly of the pool and its accessories can only be conducted by an adult. No tools are needed during the installation.
- Use the pool on an even and stable surface only. Keep it at least 2 meters / 6.56 feet away from buildings or any other obstructions.
- Leave enough space around the pool for adults to walk through for supervision of children inside the pools.
- Empty the pool after use or before storage.
- Never lean over or squeeze the inflating or deflating valve to avoid injury or water overflow.
- Take off all sharp objectse.g. jewelry, watch, key/before entering the pool.
- Keep water inside the pool clean to avoid possible illness.
- Please clean and maintain the product properly to avoid fast wear abrasion and aging.
- Check the pool regularly for any sharp edges to avoid injury to the human body.



## Get Started

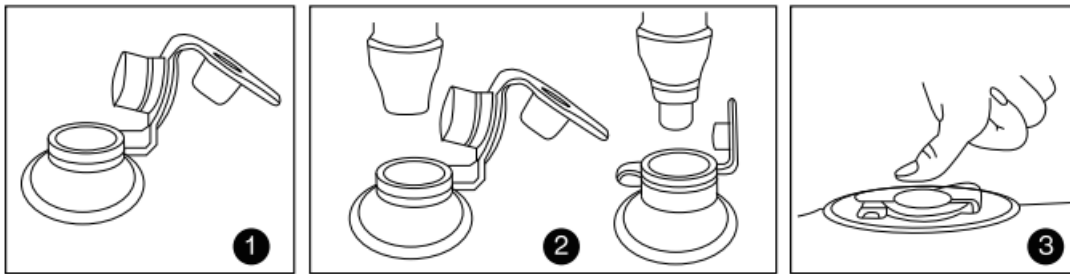
1. Find an even and stable surface, remove any sharp objects. Place the pool onto the selected spot.
2. Unfold the product gently and check its intactness. Do not use it if any breakage is found.
3. Fasten all the deflating or drainage valves securely.

### Note:

- Do not install the pool over concrete, asphalt or any other hard surface.
- Change water in the pool frequently (particularly in hot weather)or when noticeably contaminate.
- Keep the assembly and installation instructions for further reference.

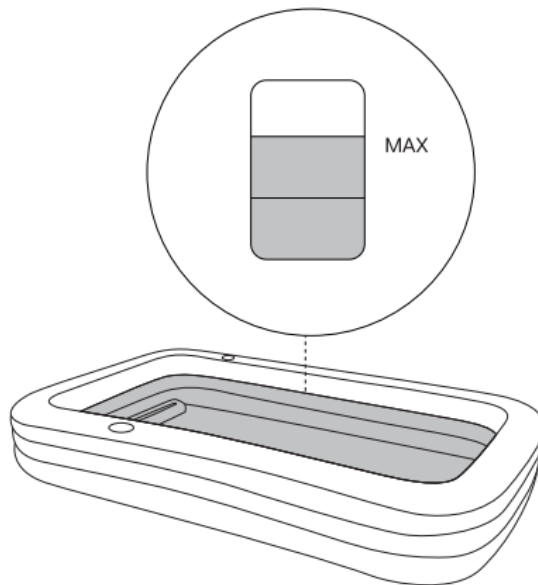
## Inflating the Pool

Inflate the pool from the bottom ring to the top ring, never overinflate it.



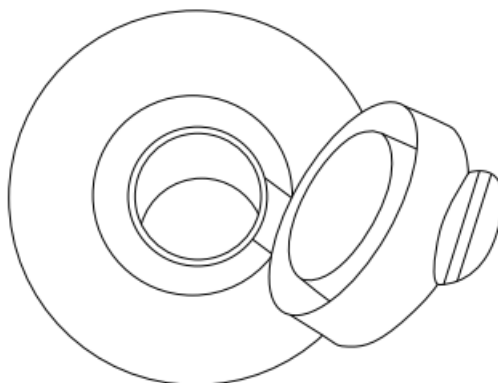
### Filling the Pool

Fill the pool slowly, do not exceed the middle ring to avoid water overflow.



### Storage and Maintenance

1. Remove all accessories, toys and pipes from the pool.
2. Open the drainage valve.




3. Open the inflating valve, fold the pool for faster deflation and drainage.
4. Fasten all the valves and expose the pool and its accessories to direct sunlight until it is completely dry.
5. Store in a clean, dry room.
6. Fix the small-sized leakage and breakage with the included fixing patches.

To keep children from entering the pool area unaccompanied by a supervising adult, we suggest construct and maintain barriers, never leave children around a portable pool unsupervised. Portable pools should be fenced, covered, or emptied and stored away when not in use. Recommendations, as described in CPSC Pub.No.362 found at [www.poolsafely.gov](http://www.poolsafely.gov).

---

## Documents / Resources

	<a href="#">hoobabi 20230112 Inflatable Pool with Seats</a> [pdf] User Guide 20230112 Inflatable Pool with Seats, 20230112, Inflatable Pool with Seats, Pool with Seats
---	--

## References

- [User Manual](#)