

HONOR
**Router 3 Easy Setup
WiFi Router**



HONOR Router 3 Easy Setup WiFi Router Installation Guide

[Home](#) » [Honor](#) » HONOR Router 3 Easy Setup WiFi Router Installation Guide 

Contents

- [1 HONOR Router 3 Easy Setup WiFi Router](#)
- [2 Product Usage Instructions](#)
- [3 Get to know about the router](#)
- [4 LED Indicators](#)
- [5 Install HUAWEI AI Life App](#)
- [6 Connect to the Internet](#)
- [7 Configuration](#)
- [8 FAQ](#)
- [9 Documents / Resources](#)
 - [9.1 References](#)
- [10 Related Posts](#)

HONOR

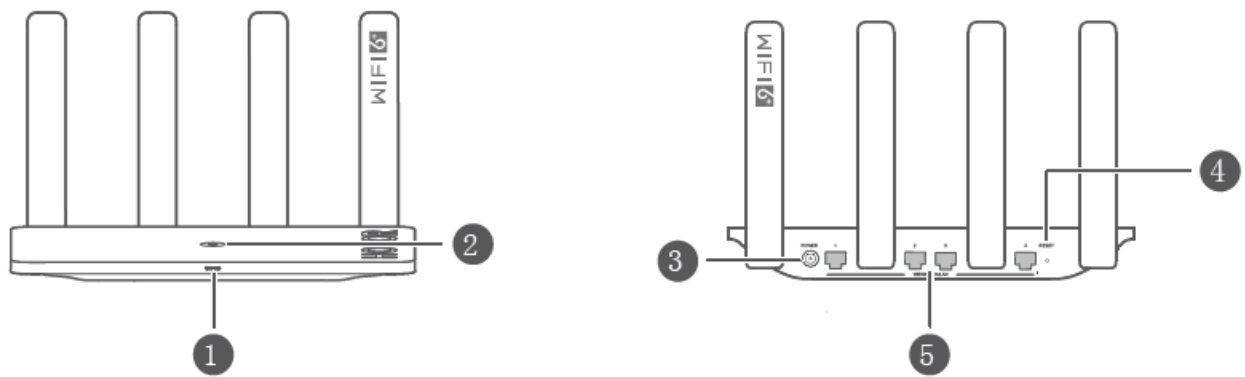
HONOR Router 3 Easy Setup WiFi Router



Product Usage Instructions

- Scan the QR code or download HUAWEI AI Life from the app store.
- Connect the Ethernet cable to any Ethernet port of the router.
- Connect the mobile phone to the router's Wi-Fi network using SSID on the router.
- Open the HUAWEI AI Life app and click CONFIGURE.
- Follow on-screen instructions to enter the username and password provided by the ISP.
- Set WiFi name (SSID) and password. WiFi password can be set as the login password for the router.

Get to know about the router



1	LED Indicator	2	H Button
3	Power port	4	Reset button
5	WAN/LAN ports: Used to connect the router to modem, computer, etc.		

LED Indicators

Steady green Internet is available

Steady red Internet is not available

- Please refer to this user manual to configure the router.
- Please make sure that the Ethernet cable is not loose and connected properly.
- Please call the ISP to confirm if the network is faulty.

Blinking The router has detected a pairable device:

When a smart device that can be paired is found, the router indicator automatically changes to slow blinking. At this time, click the H button of the router, the indicator light will blink faster, and the paired device will connect to the router's WiFi. After connecting, the router indicator stops blinking.

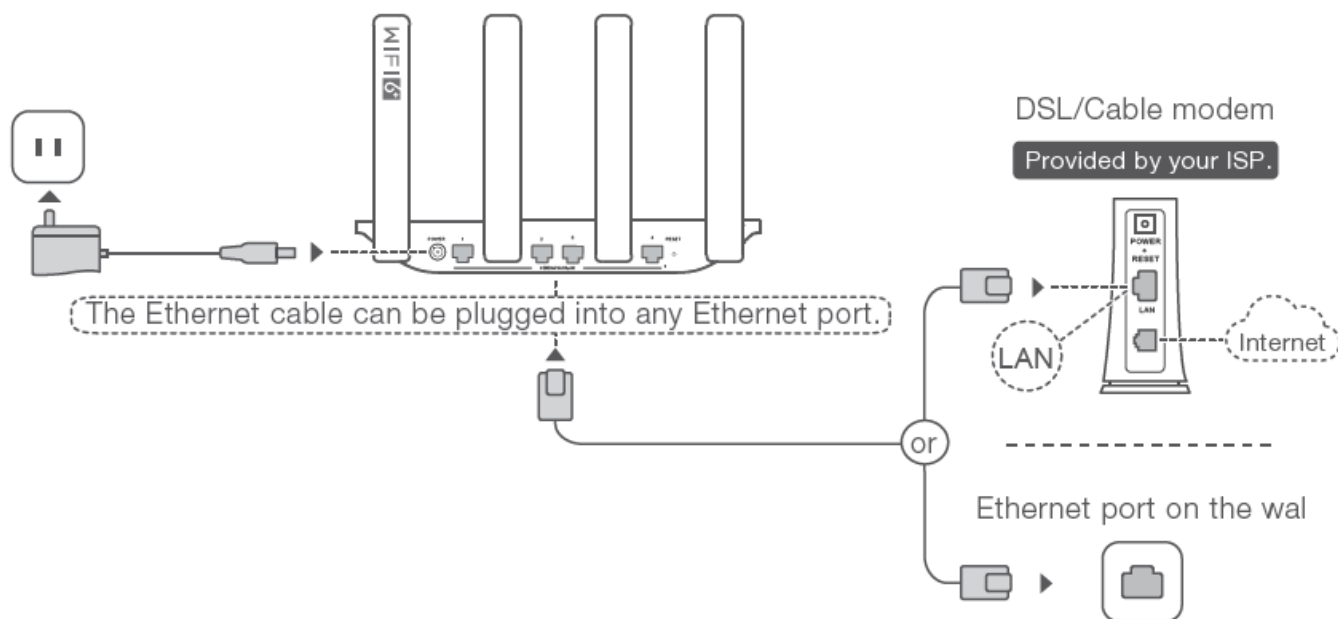
- If you accidentally click the H button to cause the indicator light to blink, please wait 2 minutes and the indicator light will automatically recover.
- The H button of the router also has the WPS button function.

Install HUAWEI AI Life App

- Scan the QR code, or download "HUAWEI AI Life" from the app store.



Connect to the Internet



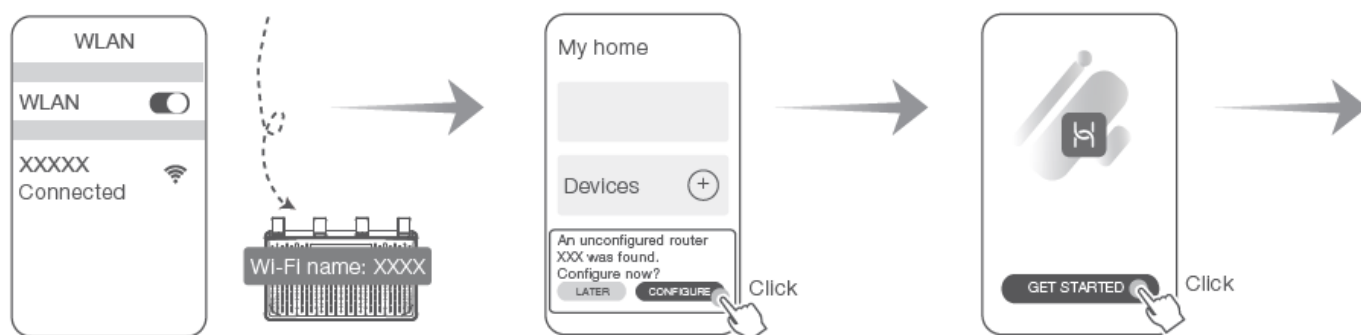
- When the four antennas are all upright, the wifi signal is better.

Configuration

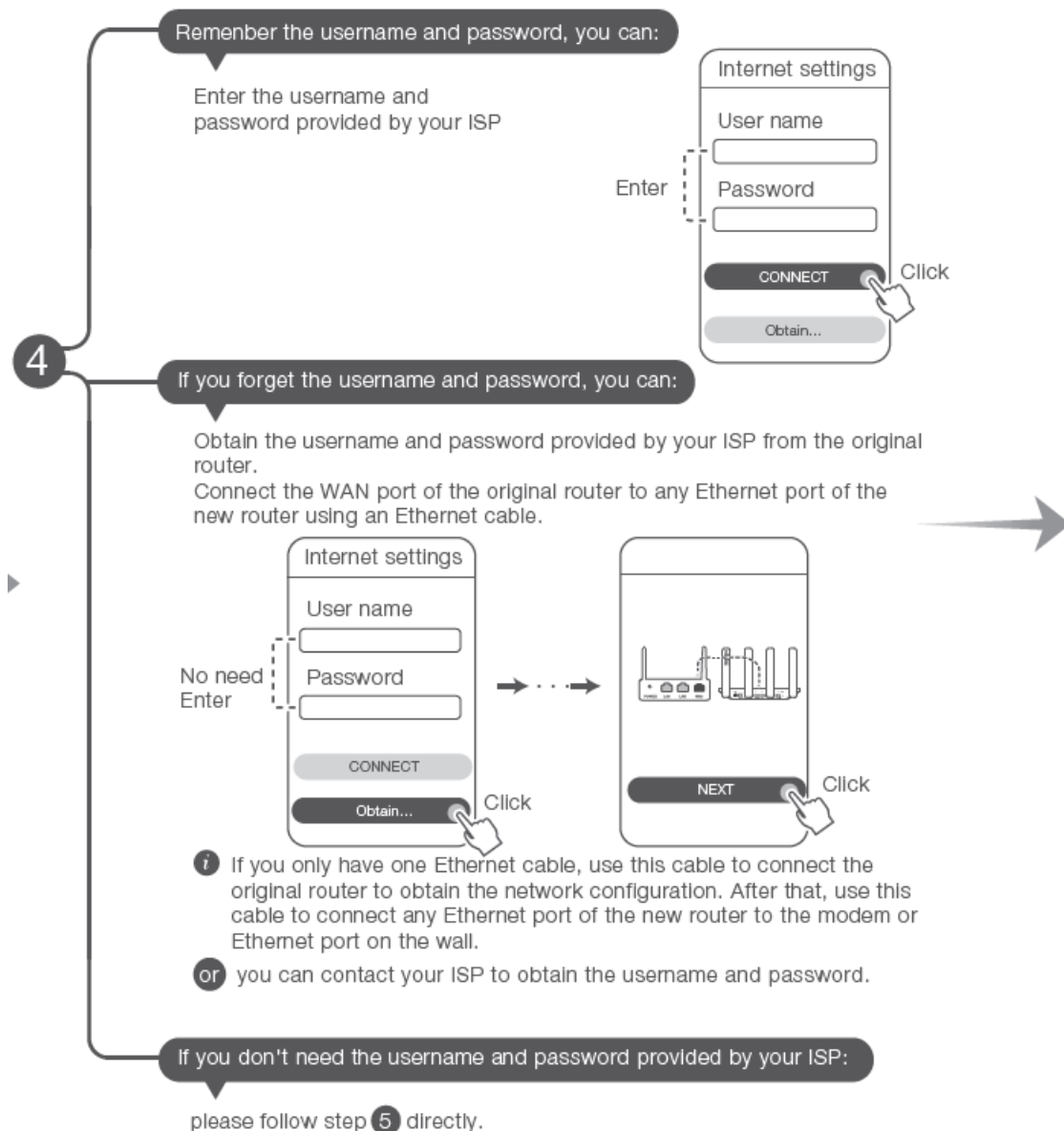
Method one

Use an app to configure the router (Recommended)

- **Step 1:** Connect the mobile phone to the router's Wi-Fi network using the SSID (Network Name) labeled on the bottom of the router. There is no WiFi password by default.
- **Step 2:** Open the HUAWEI AI Life app, click "CONFIGURE"
- **Step 3:** Click "GET STARTED"

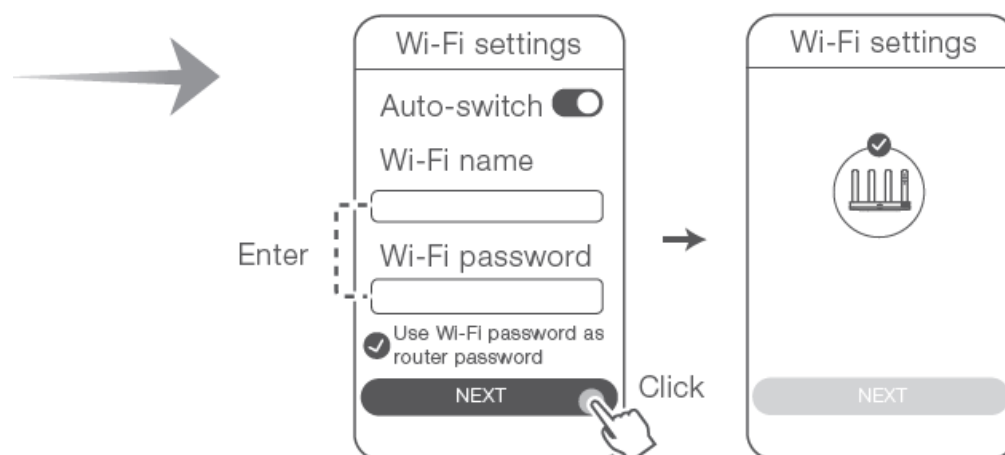


i If the prompt box does not pop-up, click "+" to add a device.



- Customize your WiFi name (SSID), and WiFi password, and set the WiFi password as the login password of the router if you need to. And click NEXT.

Note: The WiFi password is used to connect to the WiFi network, and the login password is used to login to the web UI of the router.



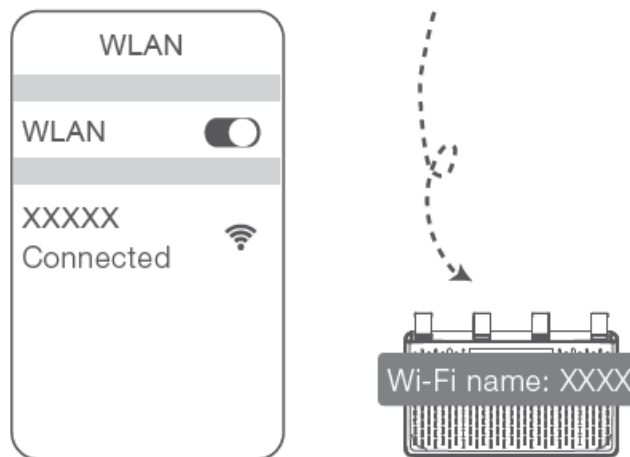
- Turn on the Auto Switch: Automatically switch between 2.4GHz and 5GHz to ensure the fastest Wi-Fi

connection. Disable to set manually

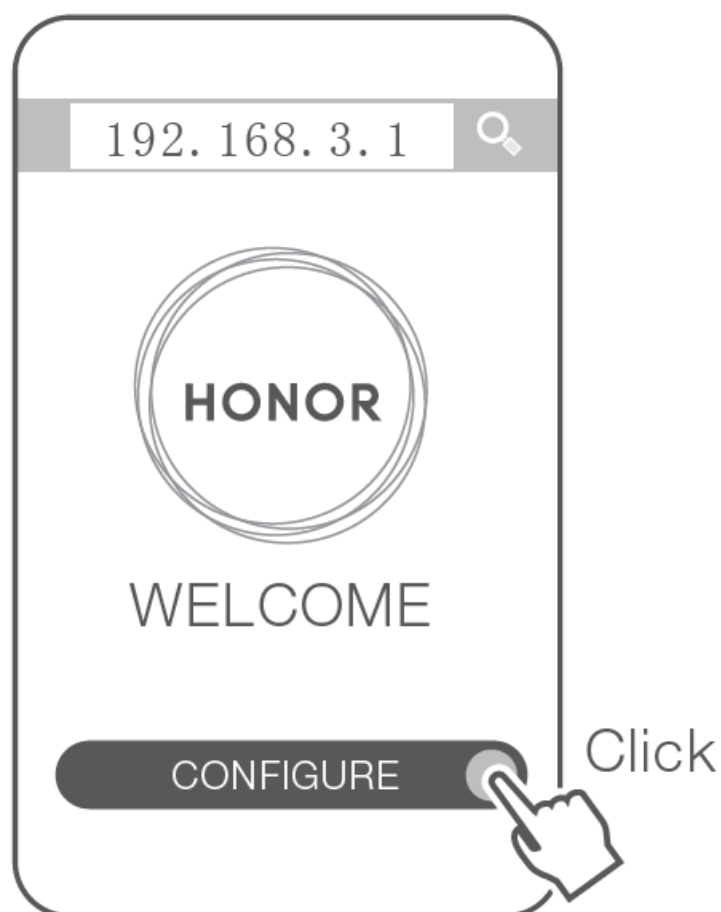
Method two

Using a webpage to Configure the router

- **Step 1:** Connect the mobile phone/ computer to the new router's Wi-Fi network using the SSID labeled on the bottom of the router. There is no WiFi password by default.



- **Step 2:** Start a web browser, the webpage will automatically pop up (If not, enter 192.168.3.1), then complete the configuration according to the page prompts.



FAQ

1. HUAWEI AI Life can not identify the router what should I do?

Please make sure the HUAWEI AI Life app is at the latest version. Please make sure the router is connected to the power wait a few moments and then detect the WiFi again. Please make sure your mobile phone is connected to the router's WiFi. Please make sure your router is new or has been restored to factory mode. It is recommended that when configuring the router there should be no more than two walls between the mobile phone and the router.

2. How to reset the router?

Locate the Reset button on the back of your router. With the router powered on, use the pointed end of a paperclip or similar object to press and hold the Reset button for 2 seconds. After the router restarts and turns on the red light the router is reset successfully.

3. How to use the WPS function?

When the router is powered on, within two minutes press the H button of the router and the WPS button of other WiFi devices in turn to start standard WPS negotiation and connect the WiFi device to the router's WiFi network.

4. How to set up a mesh network with others HUAWEI HONOR routers With H Hi button ?

Direct connection with Ethernet cable Use a Ethernet cable to connect any Ethernet port of this router already connected to the Internet successfully to the WAN port of another Huawei Honor router new or restored to factory settings No other operations are required done. **H key pairing** 1 Within 1 meter of the router which is connected to the Internet power on other routers New or restored to factory settings 2 The LED indicator light of the router that has been connected to the Internet will automatically change to slow blinking. Press the H key at this time and wait for the indicator light of other routers to be connected to the Internet for example Steady green now the mesh networking is built completely. Then you can move other routers to other rooms and turn on the power.

5. If some devices cannot detect the router or connect to the router's WiFi, what should I do?

HONOR router 3 supports WiFi 6. With WiFi 6 you can expect faster network speed stronger Wi-Fi connections and wider signal coverage on all your devices That means smoother streaming and gaming and lightning speed downloads. However some devices with earlier network adapter drivers such as certain laptops with Intel network adapters can't discover the Wi-Fi 6 network please upgrade your device's driver to the latest or follow the method below Please upgrade the latest version of the router and HUAWEI AI Life app, in the HUAWEI AI Life app click the router icon search for Backup WiFi5 in View more and turn on the WiFi5 backup network and then use the old device to connect to the WiFi5 network.

This information is for reference only and does not constitute any other form of commitment.



Documents / Resources

	HONOR Router 3 Easy Setup WiFi Router [pdf] Installation Guide Router 3 Easy Setup WiFi Router, Router 3, Easy Setup WiFi Router, Setup WiFi Router, WiFi Router, Router
---	---

References

- [User Manual](#)

[Manuals+](#), [Privacy Policy](#)

This website is an independent publication and is neither affiliated with nor endorsed by any of the trademark owners. The "Bluetooth®" word mark and logos are registered trademarks owned by Bluetooth SIG, Inc. The "Wi-Fi®" word mark and logos are registered trademarks owned by the Wi-Fi Alliance. Any use of these marks on this website does not imply any affiliation with or endorsement.