

HONG KONG

Q5 Wifi Camera



HONG KONG Q5 Wifi Camera Instructions

[Home](#) » [HONG KONG](#) » HONG KONG Q5 Wifi Camera Instructions 

Contents

- [1 HONG KONG Q5 Wifi Camera](#)
- [2 Product Specifications](#)
- [3 Product Usage Instructions](#)
- [4 Frequently Asked Questions](#)
- [5 Download Yi IoT app](#)
- [6 Sign up and log in](#)
- [7 How to add camera](#)
- [8 How to connect with Wi-fi](#)
- [9 How to use app](#)
- [10 Cloud storage](#)
- [11 Common problem](#)
- [12 Special statement](#)
- [13 FCC Statement](#)
- [14 Documents / Resources](#)
 - [14.1 References](#)
- [15 Related Posts](#)

HONG KONG

HONG KONG Q5 Wifi Camera



Product Specifications

- **Model:** NNH
- **Compliance:** FCC radiation exposure limits
- **Recommended Distance:** Minimum 20cm between radiator and body

Product Usage Instructions

Safety Precautions:

It is important to follow these safety precautions to ensure safe usage of the product:

- Ensure the device is installed as per the recommended distance of a minimum 20cm between the radiator and your body.
- Avoid direct contact with the radiator during operation.
- Keep the device away from water or other liquids to prevent damage.

Installation:

Follow these steps to install the device properly:

1. Choose a suitable location for installation where the recommended distance can be maintained.
2. Securely place the device ensuring it is stable and will not fall or move during operation.
3. Connect the necessary power source as per the provided instructions.

Operating the Device:

Once installed, follow these guidelines for operating the product:

- Turn on the device using the designated power button or switch.
- Monitor the device during operation to ensure it functions correctly.
- If you experience any issues or abnormalities, discontinue use and seek assistance.

Frequently Asked Questions

Q: What should I do if I cannot maintain the minimum distance of 20cm?

A: It is recommended to adhere to the specified distance for safety reasons. If maintaining the distance is not possible, consider using additional shielding or consulting a professional for alternative solutions.

Download Yi IoT app

Scan QR code below



Search and download

Yi IoT app

In Google play



In App store



Sign up and log in

The image shows a mobile application interface for logging in and signing up. At the top, the status bar displays the time 7:10 and various icons. Below the status bar, there is a location selector showing 'Singapore' with a blue callout box labeled 'Select Country'. The main heading is 'Welcome Home!'. Below this, there is a 'Sign up' link with a blue callout box labeled 'Sign up here'. The login section includes an 'Enter email' field, a 'Password' field with a toggle icon, and a 'Forgot password' link. A blue callout box labeled 'Account and Password' points to the password field. At the bottom, there is a large blue 'Login' button. The bottom of the screen features a standard iOS-style home indicator bar.

7:10

Singapore

Select Country

Welcome Home!

Sign up

Sign up here

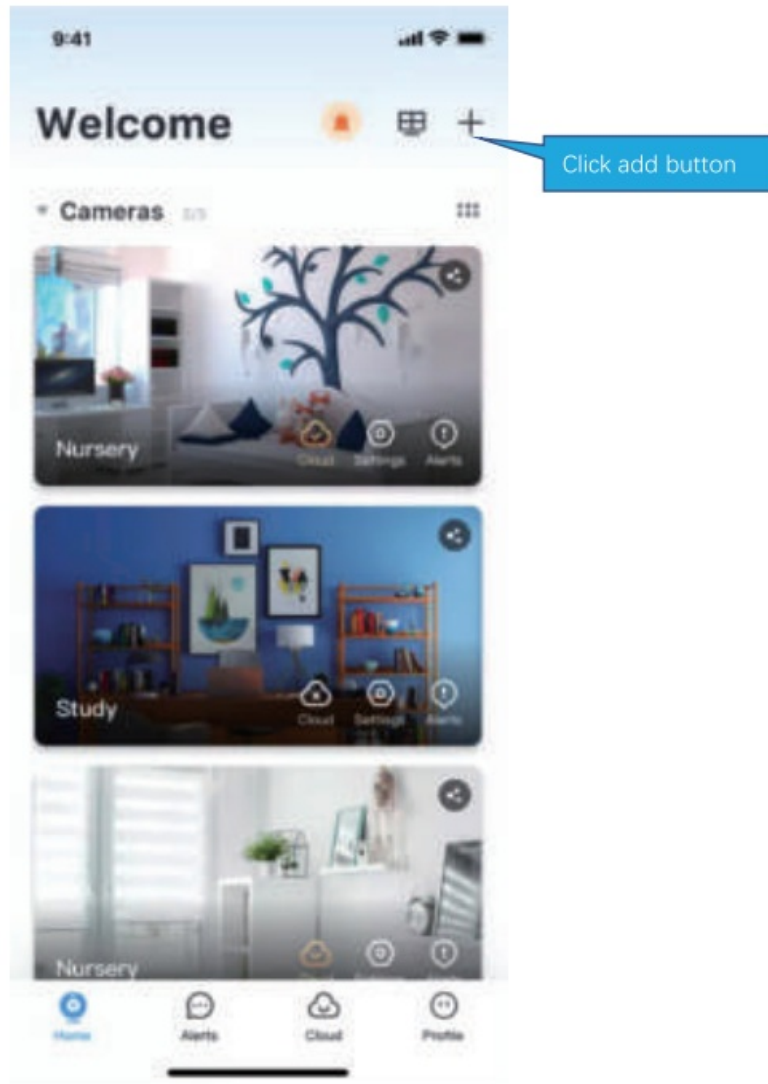
Enter email

Password

Forgot password

Login

How to add camera



How to connect with Wi-fi

7:13



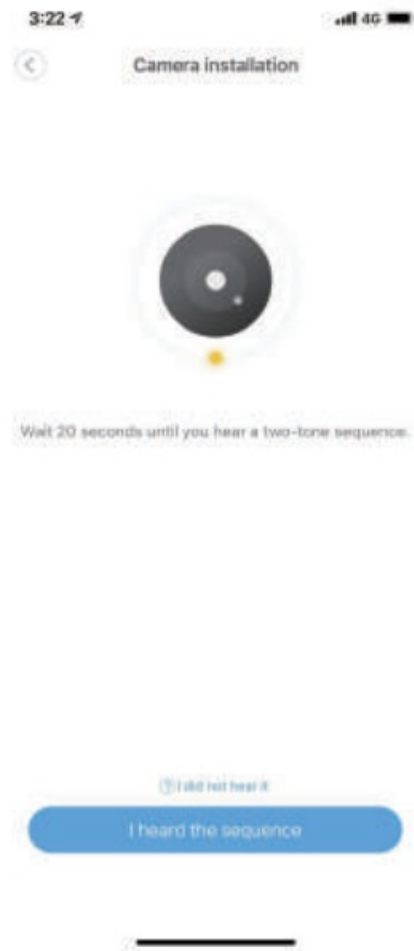
choice mode

WiFi connection

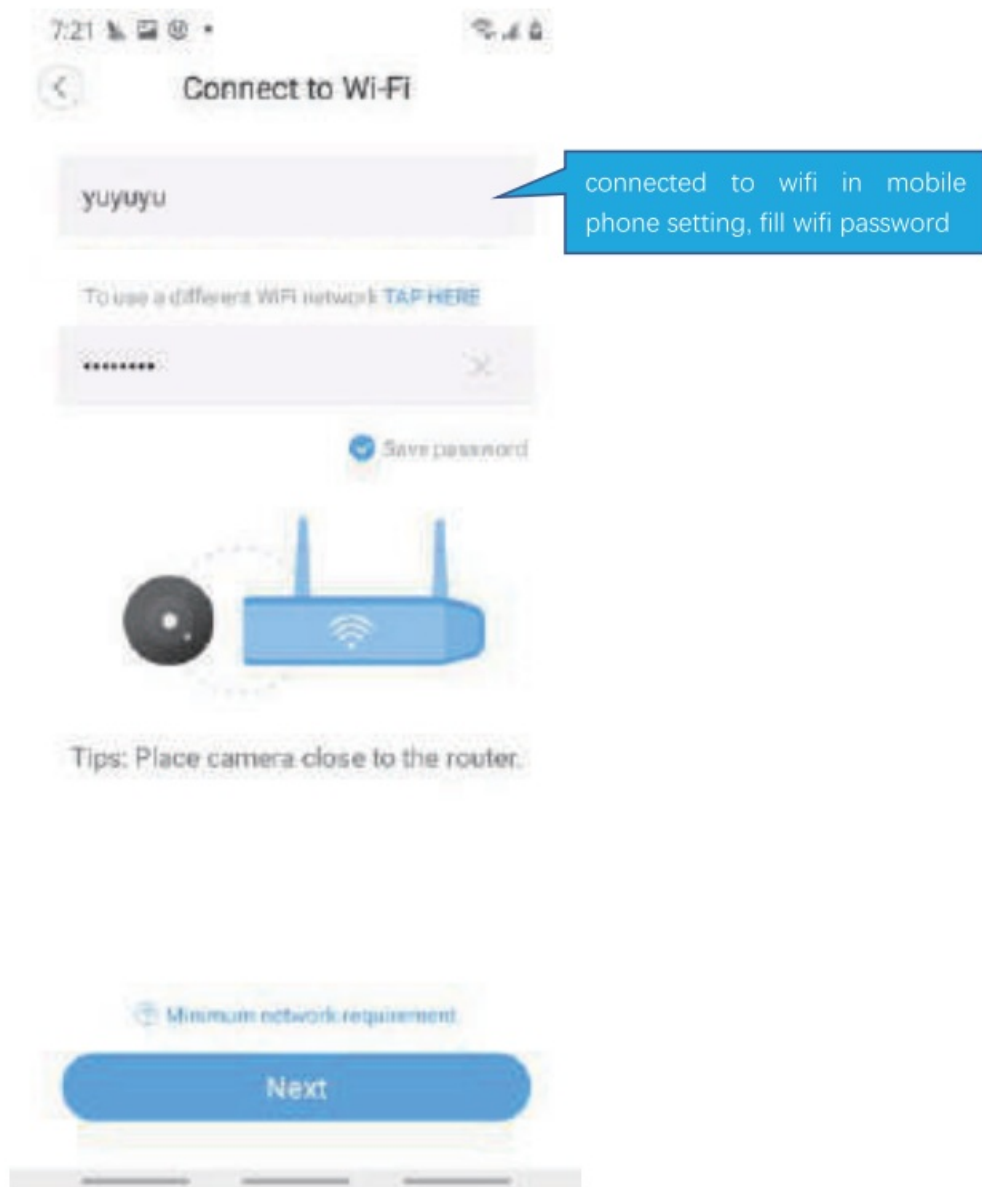
Connect camera through Wifi

[Other ways to connect](#)





If you don't hear the sequence, please press the "RESET" on the device. Continue for more than 5 seconds, until you hear the sequence, which means the reset is successful.

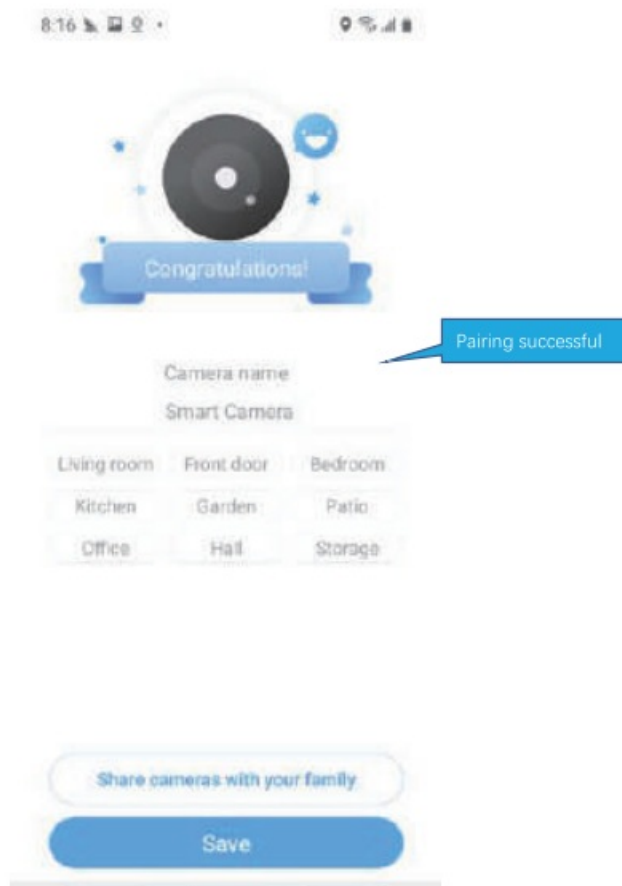


Note:

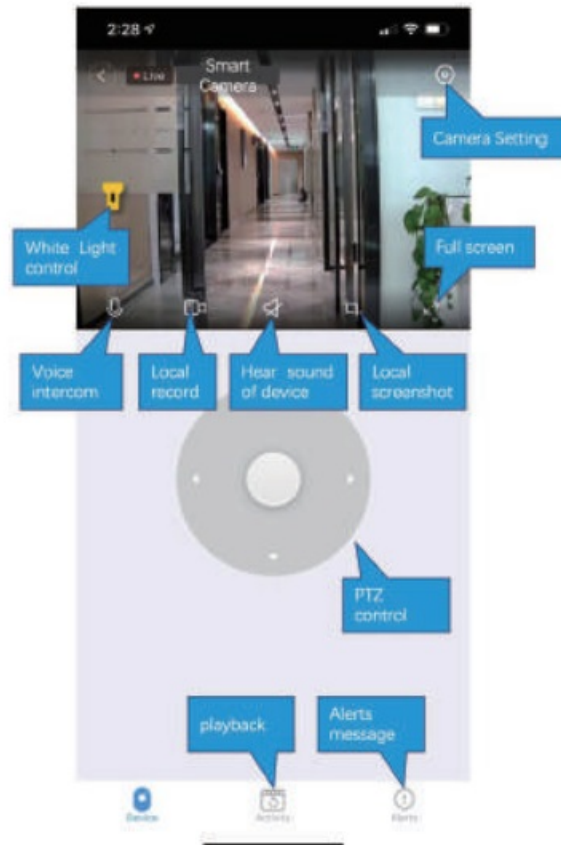
1. 5GHz wireless band is supported:
2. Please turn on the location of the phone



The QR code that appears on the mobile phone is scanned against the camera lens, and the device emits a prompt sound “QR code scan successful” and “WiFi connected”, click Next, and wait for the network configuration to be completed.

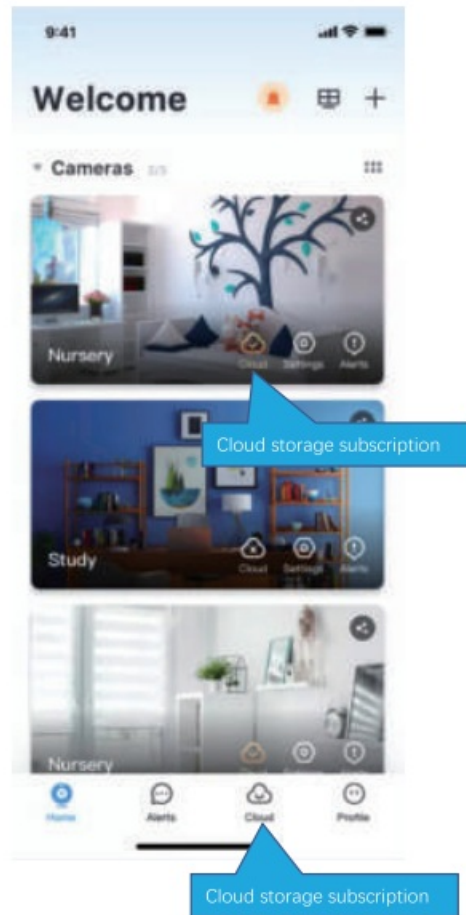


How to use app





Cloud storage



Common problem

Q: The camera is offline or offline

1. Check if the power supply is working properly
2. Power off and restart the device to reconnect to the network
3. The signal coverage is weak
4. Signal interference shielding in special places

Q: How does the camera store video

1. The camera supports the F32 format with a maximum capacity of 64G, After the card is recognized, it automatically records, and when the storage is full, it automatically overwrites the original recording and loops the recording;
2. Support opening cloud storage service to store video;

Special statement

The product is subject to the actual product, the instruction manual is for reference only Mobile phone app and device firmware version support updates, users can upgrade through the app. The manual may contain technical descriptions or inconsistencies with product functions or typographical errors. Please understand, please refer to the final interpretation of our company. Do not install the product in a place where it is damp, dusty, high temperature, flammable or explosive and out of reach of children.

FCC Statement

FCC Caution.

(1)§ 15.19 Labelling requirements.

This device complies with part 15 of the FCC Rules. Operation is subject to the following two conditions:

1. This device may not cause harmful interference, and
2. this device must accept any interference received, including interference that may cause undesired operation.

§ 15.21 Changes or modification warning

Any Changes or modifications not expressly approved by the party responsible for compliance could void the user's authority to operate the equipment. § 15.105 Information to the user.

Note: This equipment has been tested and found to comply with the limits for a Class B digital device, pursuant to part 15 of the FCC Rules. These limits are designed to provide reasonable protection against harmful interference in a residential installation. This equipment generates uses and can radiate radio frequency energy and, if not installed and used in accordance with the instructions, may cause harmful interference to radio communications. However, there is no guarantee that interference will not occur in a particular installation. If this equipment does cause harmful interference to radio or television reception, which can be determined by turning the equipment off and on, the user is encouraged to try to correct the interference by one or more of the following measures:

- Reorient or relocate the receiving antenna.
- Increase the separation between the equipment and the receiver.
- Connect the equipment to an outlet on a circuit different from that to which the receiver is connected.
- Consult the dealer or an experienced radio/TV technician for help.

RF exposure Information

This device complies with FCC radiation exposure limits set forth for an uncontrolled environment. This equipment should be installed and operated with a minimum distance 20cm between the radiator and your body.

Documents / Resources



[HONG KONG Q5 Wifi Camera](#) [pdf] Instructions
Q5, Q5 Wifi Camera, Wifi Camera, Camera

References

- [User Manual](#)

[Manuals+](#), [Privacy Policy](#)

This website is an independent publication and is neither affiliated with nor endorsed by any of the trademark owners. The "Bluetooth®" word mark and logos are registered trademarks owned by Bluetooth SIG, Inc. The "Wi-Fi®" word mark and logos are registered trademarks owned by the Wi-Fi Alliance. Any use of these marks on this website does not imply any affiliation with or endorsement.