

*HONG KONG*  
**2AL7F-Q7**  
**Wifi**  
**Camera**



## HONG KONG 2AL7F-Q7 Wifi Camera Instructions

[Home](#) » [HONG KONG](#) » HONG KONG 2AL7F-Q7 Wifi Camera Instructions 

### Contents

- [1 HONG KONG 2AL7F-Q7 Wifi Camera](#)
- [2 Specifications](#)
- [3 Product Usage Instructions](#)
- [4 FAQs](#)
- [5 Sign up and log in](#)
- [6 How to add a camera](#)
- [7 How to connect with Wifi](#)
- [8 Cloud storage](#)
- [9 FCC](#)
- [10 Documents / Resources](#)
  - [10.1 References](#)
- [11 Related Posts](#)

*HONG KONG*

**HONG KONG 2AL7F-Q7 Wifi Camera**



## Specifications

- Model: NNH
- FCC Compliance: Yes
- Minimum Distance: 20cm between radiator and body

## Product Usage Instructions

### 1. Installation

Ensure the device is placed in an uncontrolled environment with a minimum distance of 20cm between the radiator and your body.

### 2. Operation

Follow these steps to operate the device:

1. Turn on the device by pressing the power button.
2. Adjust settings as needed using the control panel.
3. Use the device within the recommended distance from your body to comply with FCC radiation exposure limits.

### 3. Maintenance

Regularly clean the device with a soft, dry cloth to prevent dust buildup and maintain optimal performance.

## FAQs

**Q: What should I do if I need to use the device closer than 20cm to my body?**

**A:** To ensure compliance with FCC radiation exposure limits, it is recommended to maintain a minimum distance of 20cm between the radiator and your body at all times during operation.

### Q: How do I know if the device is FCC-compliant?

A: You can refer to the product specifications or documentation to verify FCC compliance. The model NNH is FCC-compliant.

### Download Yi IoT app

Scan QR code below



Search and download

Yi IoT app

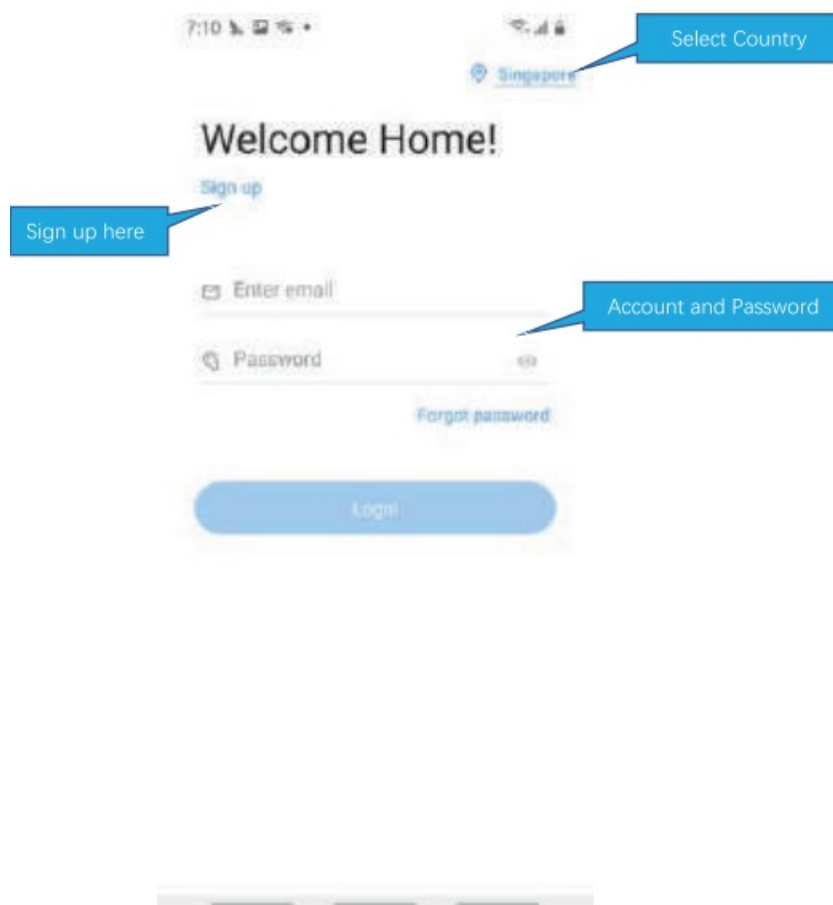
In Google play



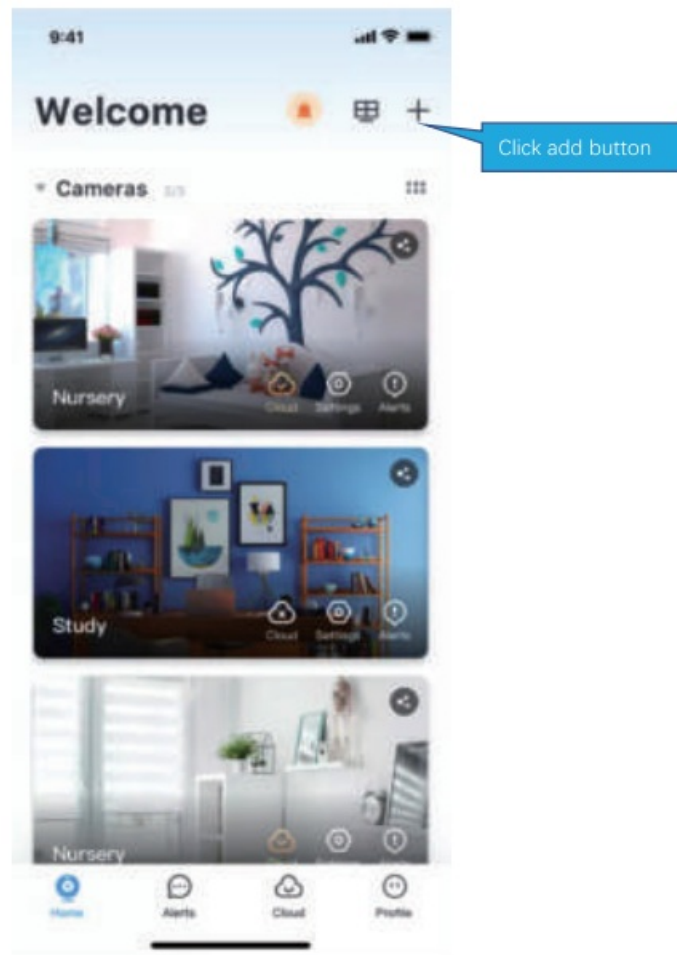
In App store



### Sign up and log in

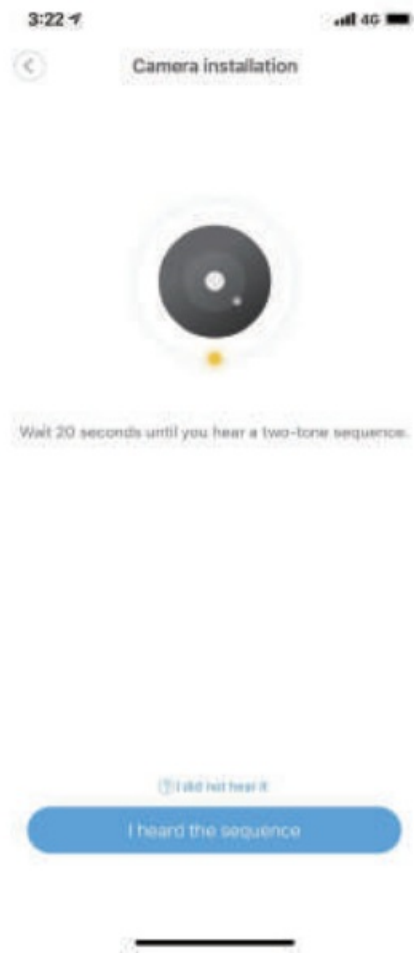


### How to add a camera

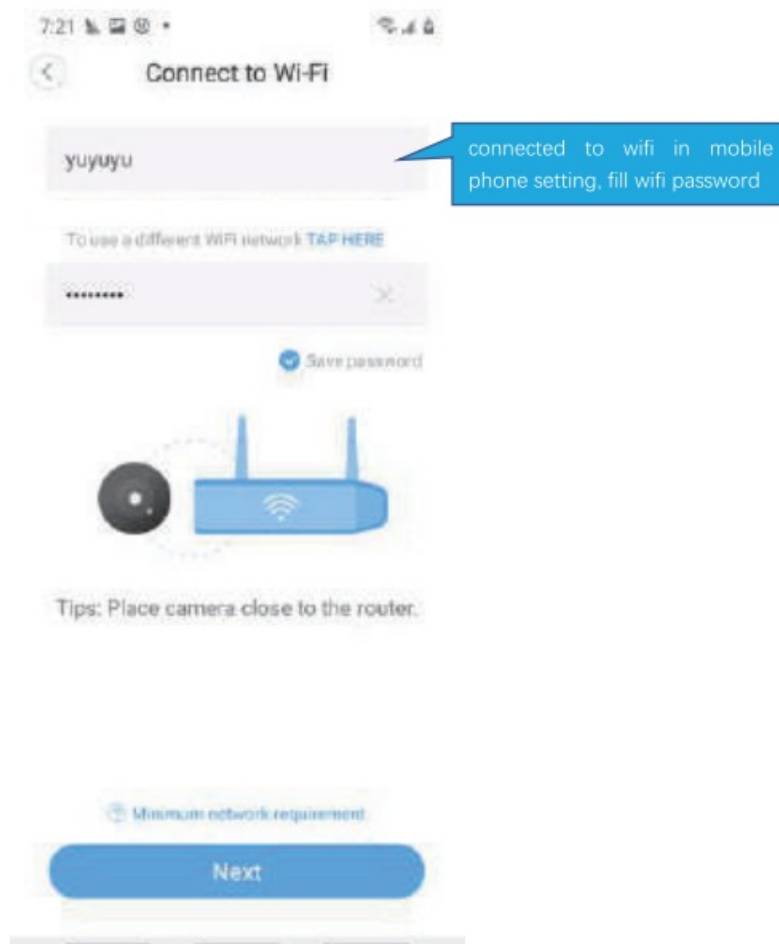


## How to connect with Wifi





If you don't hear the sequence, please press the "RESET" on the device. Continue for more than 5 seconds, until you heard the sequence, that means the reset is successful.

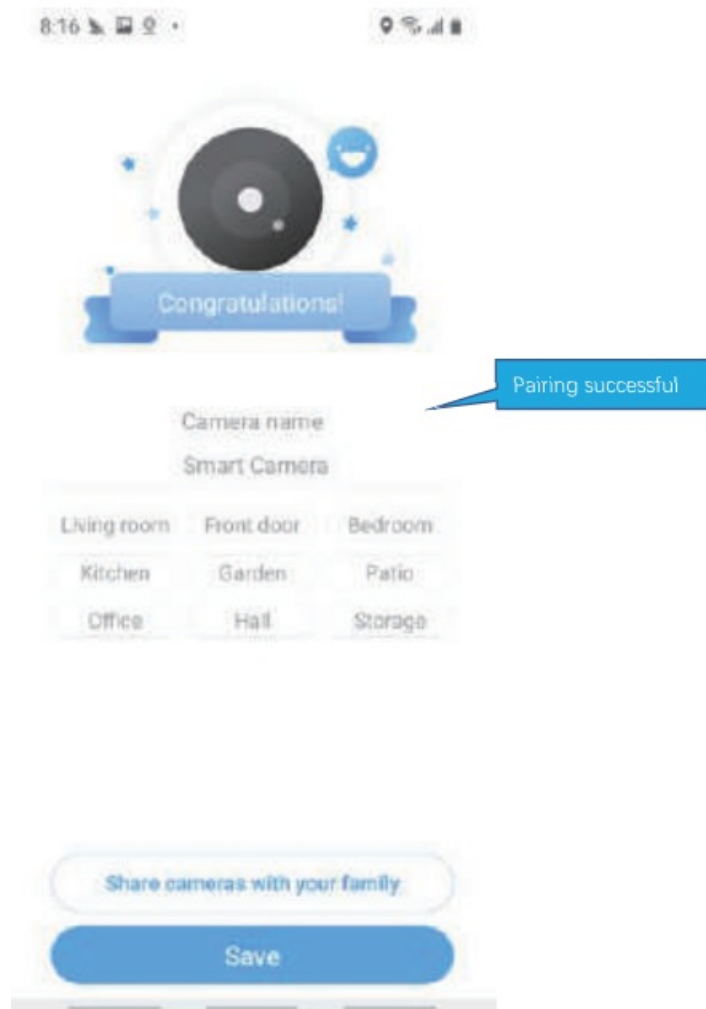


**Note:**

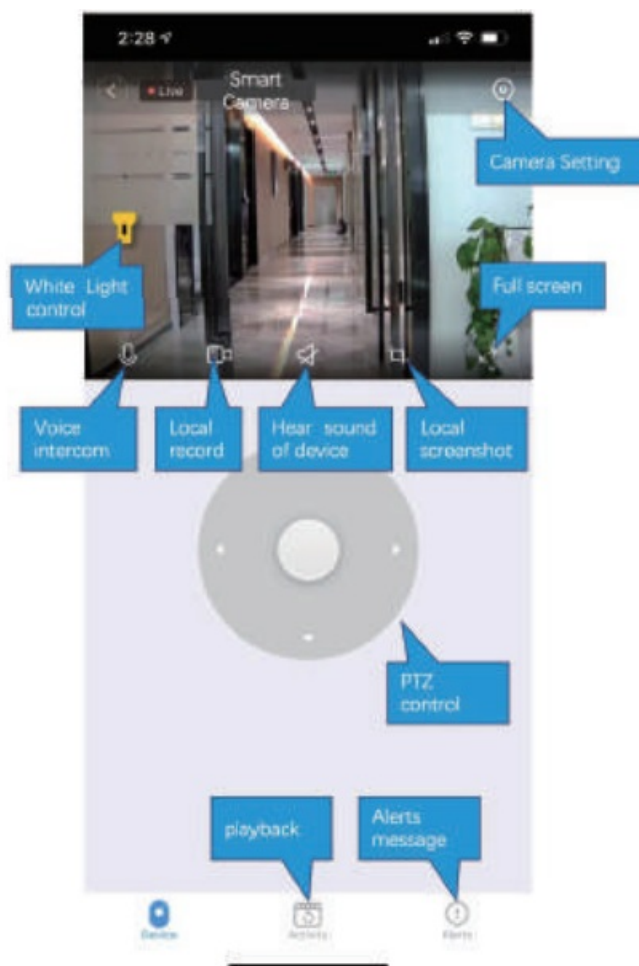
1. 5GHz wireless band is supported;
2. Please turn on the location of the phone



The QR code that appears on the mobile phone is scanned against the camera lens, and the device emits a prompt sound "QR code scan successful" and "WiFi connected", click Next, and wait for the network configuration to be completed.



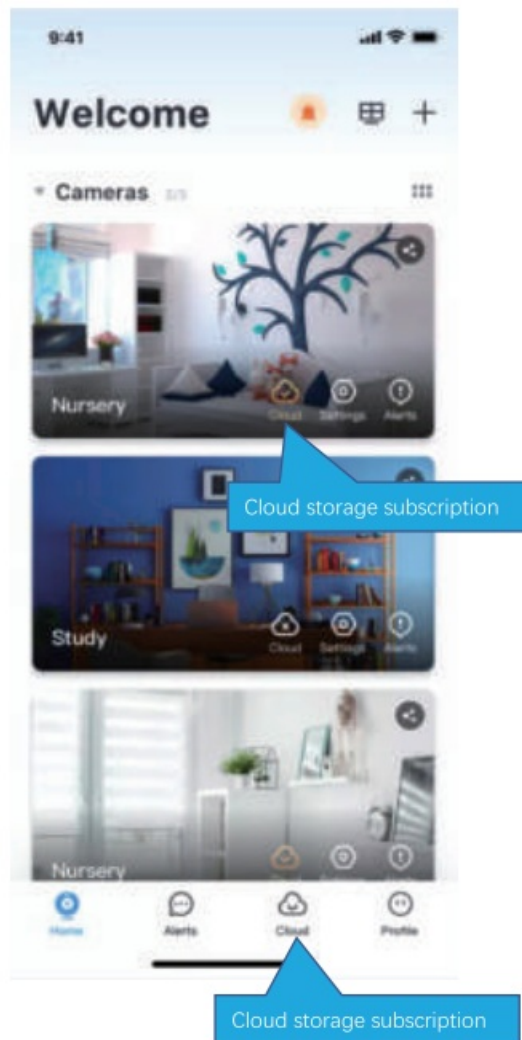
**How to use app**







Cloud storage



## Common problem

### Q: The camera is offline or offline

1. Check if the power supply is working properly
2. Power off and restart the device to reconnect to the network
3. The signal coverage is weak
4. Signal interference shielding in special places

### Q: How does the camera store video

1. The camera supports the F32 format with a maximum capacity of 64G. After the card is recognized, it automatically records, and when the storage is full, it automatically overwrites the original recording and loops the recording:
2. Support opening cloud storage service to store video;

## Special statement

The product is subject to the actual product, the instruction manual is for reference only Mobile phone app and device firmware version support updates, users can upgrade through the app The manual may contain technical descriptions or inconsistencies with product functions or typographical errors. Please understand, please refer to the final interpretation of our company. Do not install the product in a place where it is damp, dusty, high

temperature, flammable or explosive, and out of reach of children.

## FCC

### FCC Caution.

- (1)§ 15.19 Labelling requirements.
- This device complies with part 15 of the FCC Rules. Operation is subject to the following two conditions: (1) This device may not cause harmful interference, and (2) this device must accept any interference received, including interference that may cause undesired operation.

### § 15.21 Changes or modification warning

- Any Changes or modifications not expressly approved by the party responsible for compliance could void the user's authority to operate the equipment.

### § 15.105 Information to the user

Note: This equipment has been tested and found to comply with the limits for a Class B digital device, pursuant to part 15 of the FCC Rules. These limits are designed to provide reasonable protection against harmful interference in a residential installation. This equipment generates uses and can radiate radio frequency energy and, if not installed and used in accordance with the instructions, may cause harmful interference to radio communications.


However, there is no guarantee that interference will not occur in a particular installation. If this equipment does cause harmful interference to radio or television reception, which can be determined by turning the equipment off and on, the user is encouraged to try to correct the interference by one or more of the following measures:

- Reorient or relocate the receiving antenna.
- Increase the separation between the equipment and the receiver.
- Connect the equipment to an outlet on a circuit different from that to which the receiver is connected.
- Consult the dealer or an experienced radio/TV technician for help.

### RF exposure Information

This device complies with FCC radiation exposure limits set forth for an uncontrolled environment. This equipment should be installed and operated with a minimum distance 20cm between the radiator and your body .

### Documents / Resources

	<a href="#">HONG KONG 2AL7F-Q7 Wifi Camera</a> [pdf] Instructions 2AL7F-Q7, 2AL7F-Q7 Wifi Camera, Wifi Camera, Camera
---	--

### References

- [User Manual](#)

