



# Honeywell T4M Programmable Modulating Thermostat Installation Guide

[Home](#) » [Honeywell](#) » Honeywell T4M Programmable Modulating Thermostat Installation Guide 

## Honeywell

**T4M Thermostat  
Programmable Modulating Thermostat  
Quick Start Installation Guide**

### Contents

- [1 T4M Programmable Modulating Thermostat](#)
- [2 Parameters](#)
- [3 Troubleshooting](#)
- [4 Documents / Resources](#)
  - [4.1 References](#)

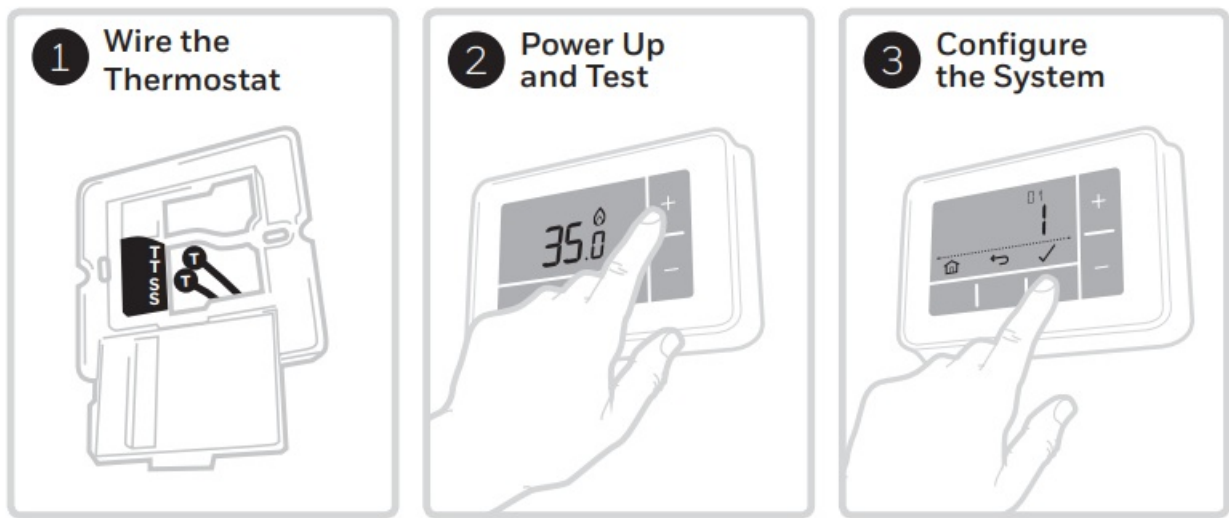
## T4M Programmable Modulating Thermostat

Compatible with Open Term appliances only.

Not compatible with 230V boilers, zone valve applications or 230V electric heating.



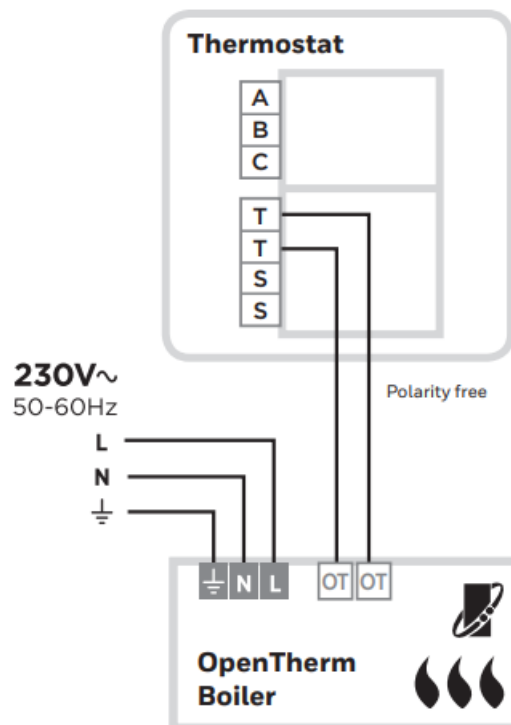
**Installation in 3 steps**



Must be installed by a competent person.

To ensure your safety make sure the mains power is switched OFF before accessing wiring.

### Open Term Boiler

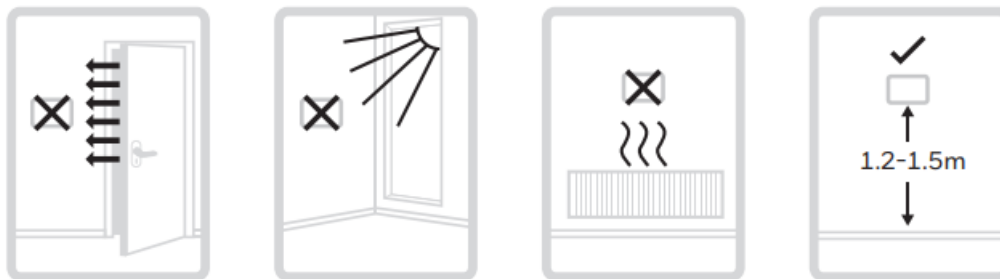


To prevent a short circuit from a loose wire

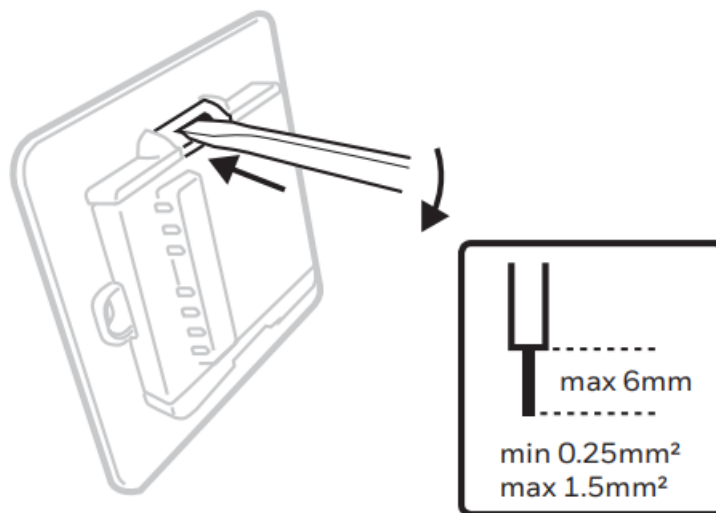
- When using multi-core cables: Only remove enough outer insulation to allow secure fixing of the cores into the terminal block.
- When using single core cables: Secure them together with a cable tie as close as possible to the terminal block.

### 1. Wire the Thermostat

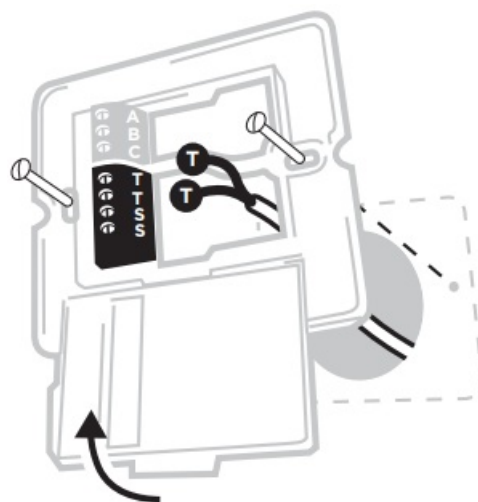
Find a suitable wall location away from draughts, direct sunlight or other heat sources, and where cables can be run from the boiler to the thermostat.



A) Separate the Wallplate from the thermostat, and using a screwdriver open the Wallplate terminal cover to connect wires.

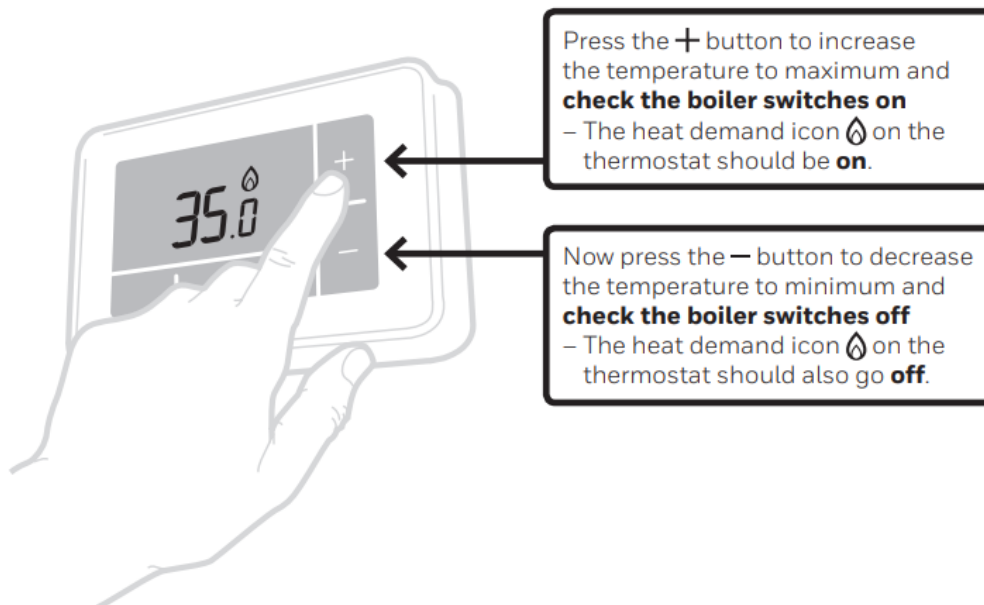


B) Connect wires according to wiring diagrams and clip the cover closed.



## 2. Power Up and Test

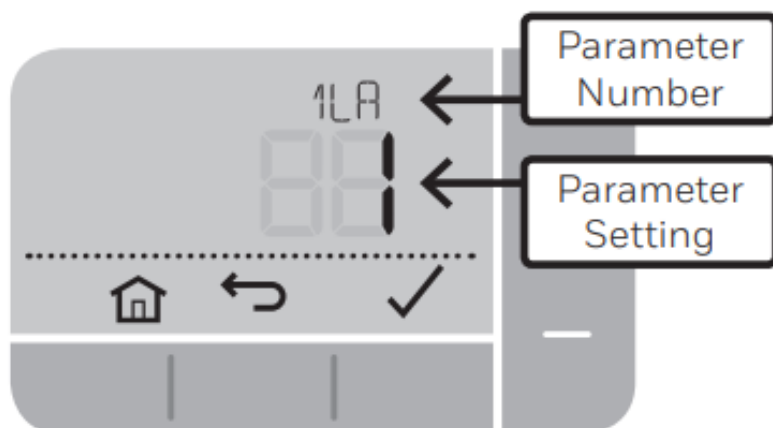
Power Up the Heating System and do a quick functional test on the thermostat to check that it switches the boiler.



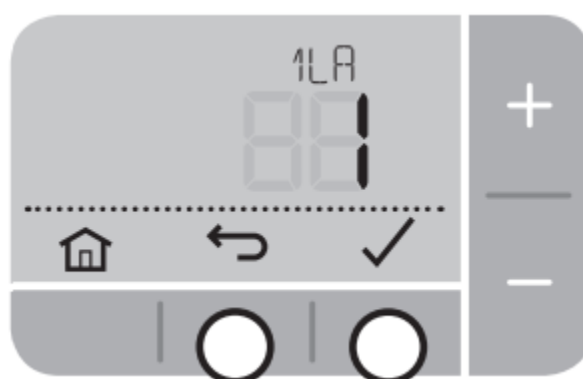
### 3. Configure the System

Specific settings for the thermostat and heating system can be configured in the advanced menu.

Press and hold **≡** and then **+** buttons together until the display changes (approx. 3 seconds).



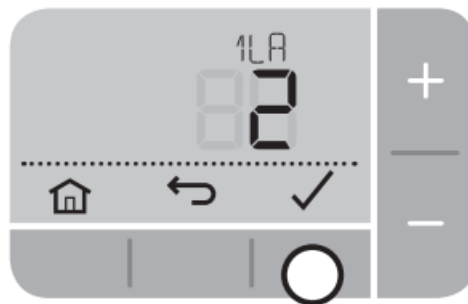
A) Press **✓** and **↶** buttons to navigate through the parameter list



B) Press **+** and **–** buttons to change a parameters



C) Press ✓ button to save the change ↶ (or press to cancel the change)



D) Press button to exit advanced menu and save any changes





## Parameters

No	Description	Settings (default in bold)
1 LA	Language	1 = EN, 2 = NL, 3 = DE, 4 = FR, 5 = ES
4 LL	Lower Temperature Limit	5 – 21 (°C)
5 UL	Upper Temperature Limit	21 – 35 (°C)
6 SO	Schedule options	1 = 7 day (different schedule each day of the week) 2 = 5 + 2 day (weekday + weekend schedule) 3 = 1 day (same schedule every day)
7 NP	Number of periods per day	4 or 6
8 SS	Wired Remote Sensor	0 = No Remote Sensor, 1 = Wired Remote Sensor
9 LC	Fail Safe mode	0 = Boiler off, 1 = Boiler 20% on / 80% off
10 BL	Backlight	0 = Off, 1 = On (only on demand)
11 CL	Clock Format	0 = 24 hr, 1 = AM/PM
12 DS	Daylight Saving time change	0 = Off, 1 = Auto
13 TO	Temperature Display Offset	+/-1.5°C
15 SD	Restore Schedule Defaults	0, 1 = reset
16 FS	Restore Factory Settings	0, 1 = reset

OT1	Low load control	0 = Off, 1 = On
OT2	Control setpoint	5 – 99°C
OT3	Supply water temperature	5 – 99°C
OT4	Return water temperature	5 – 99°C
OT5	Max. supply water temperature	5 – 99°C
OT6	Hot water temperature	5 – 99°C
OT7	Hot water setpoint	5 – 99°C
OT8	Actual power	0 – 99%
OT9	Water pressure	0.0 – 9.9
OT10	OTC control	0 = Off, 1 = On
OT11	OTC curve	4 – 40 (16)
OT12	Room compensation	0 = Off, 1 = On

## Troubleshooting

What's happening?	What it could mean...	How to fix it...
Thermostat display is blank	No power to heating system	Check heating system is powered
	Faulty wiring connection	Check wiring at thermostat and boiler terminals
Display =  — —	Faulty temperature sensor	Replace thermostat or check wiring to remote temperature sensor if fitted
Thermostat shows heat demand  but boiler doesn't respond	Boiler (water) already at temperature	Normal behavior – wait for water temperature to drop
	Faulty wiring connection	Check wiring at thermostat and boiler terminals



Conforms to protection requirements of the following directives:

EMC: 2014/30/EU and LVD: 2014/35/EU

ErP: Class VI (+4%), (EU) 811/2013



WEEE Directive 2012/19/EC – Waste Electrical and Electronic Equipment directive

At the end of the product life dispose of the packaging and product in a corresponding recycling centre. Do not dispose of the unit with the usual domestic refuse. Do not burn the product.

# Honeywell

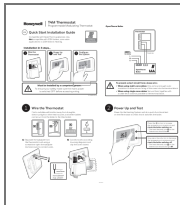
Honeywell Control Systems Ltd.  
Skimped Hill Lane,  
Cracknell,  
Berkshire  
RG12 1EB

[www.honeywelluk.com](http://www.honeywelluk.com)

Manufactured for and on behalf of the Environmental & Energy Solutions  
Division of Honeywell Technologies Sàrl, ACS-E&ES, Z.A., La Pièce 16,  
1180 Rolle, Switzerland by its Authorised Representative Honeywell Inc.  
© 2016 Honeywell International Inc. | Printed in UK

---

## Documents / Resources



[Honeywell T4M Programmable Modulating Thermostat](#) [pdf] Installation Guide  
T4M 01, T4M, T4M Programmable Modulating Thermostat, Programmable Modulating  
Thermostat, Modulating Thermostat, Thermostat

## References

- <sup>MH</sup> [Search - Manual-Hub.com](#)