



Honeywell T4M Programmable Modulating Thermostat Installation Guide

[Home](#) » [Honeywell](#) » Honeywell T4M Programmable Modulating Thermostat Installation Guide 

Honeywell Home

T4M Thermostat
Programmable Modulating Thermostat

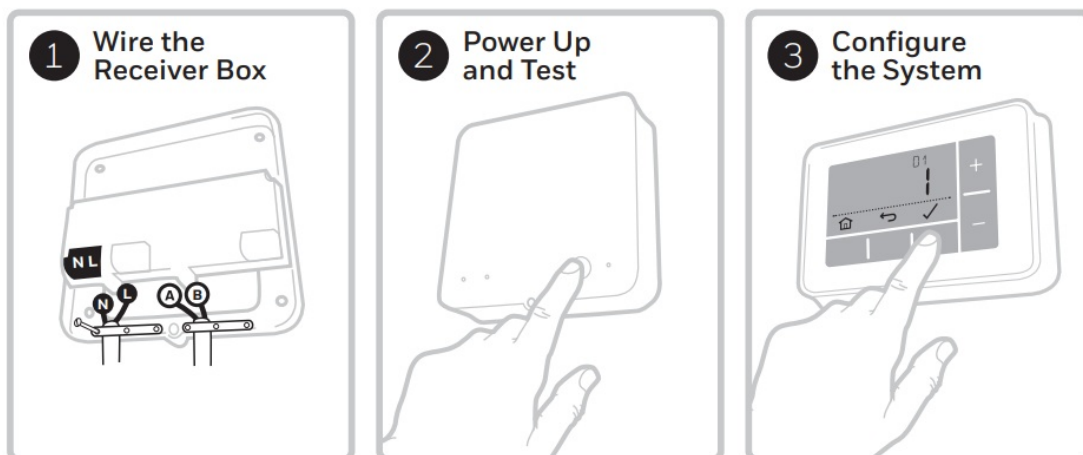


Quick Start Installation Guide

Compatible with OpenTherm appliances only.

Not compatible with 230V boilers, zone valve applications or 230V electric heating.

Installation in 3 steps...





Must be installed by a competent person.

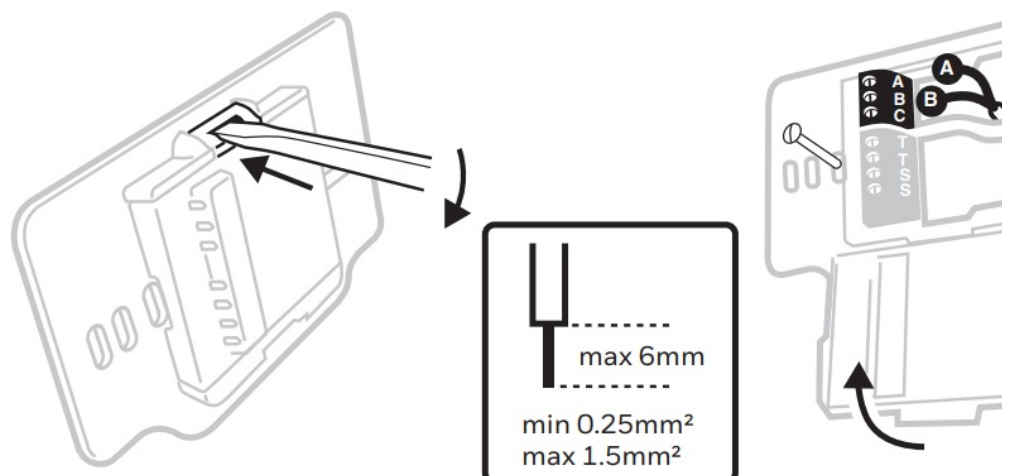
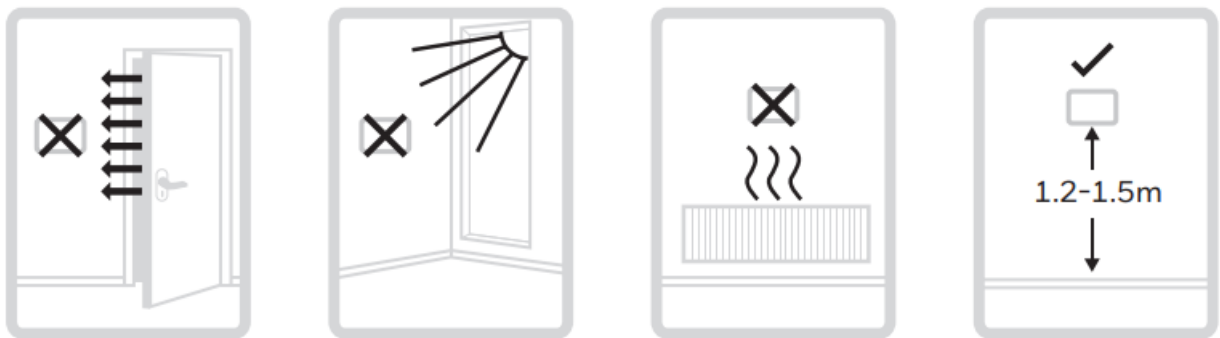
To ensure your safety make sure the mains power is switched OFF before accessing wiring.

Contents

- [1 Wire the Thermostat](#)
 - [1.1 OpenTherm Boiler](#)
- [2 Power Up and Test](#)
- [3 Configure the System](#)
- [4 OpenTherm Data ID's](#)
- [5 Parameters](#)
- [6 Troubleshooting](#)
- [7 Documents / Resources](#)
 - [7.1 References](#)
- [8 Related Posts](#)

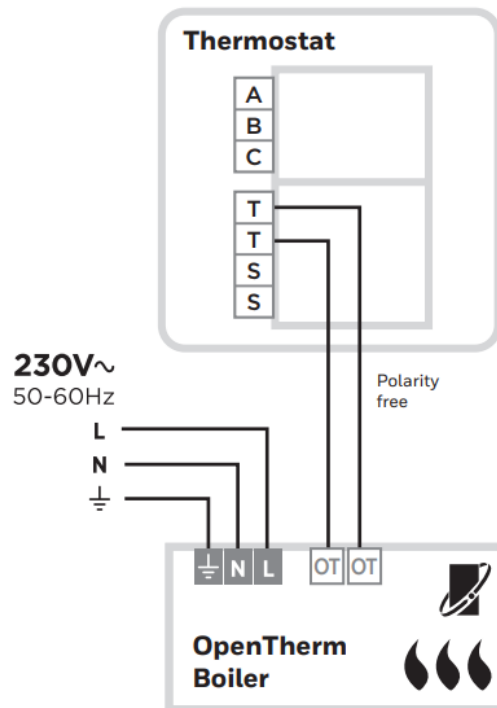
Wire the Thermostat

Find a suitable wall location away from draughts, direct sunlight or other heat sources, and where cables can be run from the boiler to the thermostat.



A) Separate the wallplate from the thermostat, and using a screwdriver open the wallplate terminal cover to connect wires.

B) Connect the wires and close the cover.

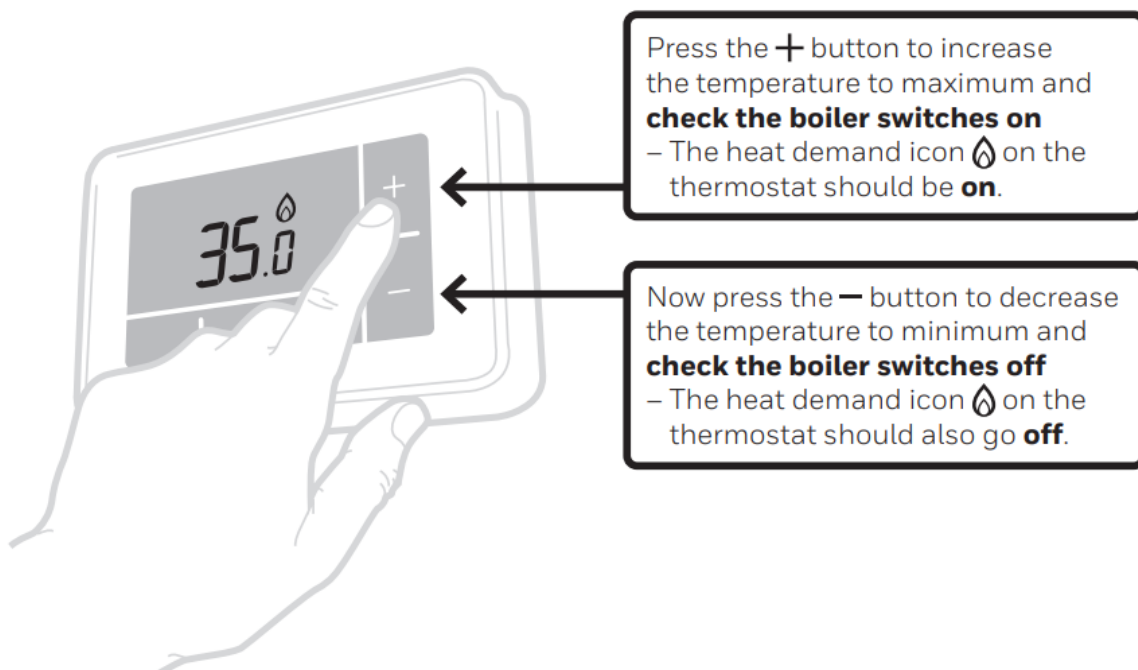


To prevent a short circuit from a loose wire

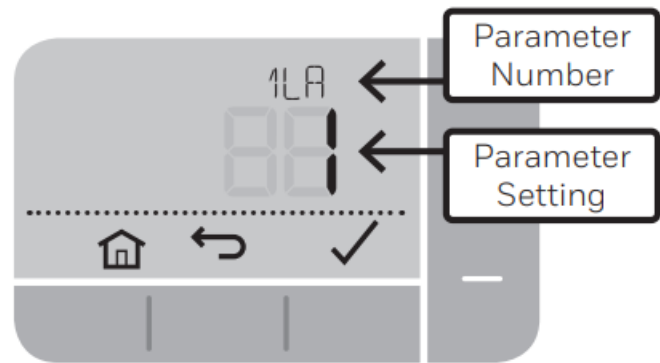
- When using multi-core cables: Only remove enough outer insulation to allow secure fixing of the cores into the terminal block.
- When using single-core cables: Secure them together with a cable tie as close as possible to the terminal block.

Power Up and Test

Power Up the Heating System and do a quick functional test on the thermostat to check that it switches the boiler.



Configure the System



Specific settings for the thermostat and heating system can be configured in the advanced menu.
Press and hold and then buttons together until the display changes (approx. 3sec).

A) Press and buttons to navigate through the parameter list	B) Press + and - buttons to
C) Press the button to save the change (or press to cancel the change)	D) Press the button to

OpenTherm Data ID's


An OpenTherm boiler can report alerts back to the Thermostat.
You can view these in the 'OpenTherm® boiler alerts' menu.
The OpenTherm Data IDs appear after the installer parameters (see the table above).

N°	Description	Settings (default in bold)
OT1	Low load control	0 = Off, 1 = On
OT2	Control setpoint	5 – 99°C
OT3	Supply water temperature	5 – 99°C
OT4	Return water temperature	5 – 99°C
OT5	Max. supply water temperature	5 – 99°C
OT6	Hot water temperature	5 – 99°C
OT7	Hot water setpoint	5 – 99°C
OT8	Actual power	0 – 99%
OT9	Water pressure	0.0 – 9.9
OT10	OTC control	0 = Off, 1 = On
OT11	OTC curve	4 – 40 (16)
OT12	Room compensation	0 = Off, 1 = On

Parameters

N°	Description I- Settings (default in bold)	
1 LR	Language	1= EN
2 CR	Heating Cycle Rate (cps)	3 (oil boiler / thermal actuator) 6 (gas or combi boiler / zone valve) 9 12
3 OT	Minimum on time	1- 5 (mins) (set to 4 mins for oil boiler)
4 LL	Lower Temperature Limit	5 – 21 (°C)
5 UL	Upper-Temperature Limit	21 – 35 (°C)
6 SO	Schedule options	1= 7 days (different schedule each day of the week) 2 = 5 + 2 day (weekday + weekend schedule) 3 = 1 day (same schedule every day)
7 NP	Number of periods per day	4 or 6
9 LC	Fail Safe mode	0 = Boiler off, 1 = Boiler 20% on / 80% off
10 BL	Backlight	0 = Off, 1 = On (only on demand)
11 CL	Clock Format	0 = 24 hr, 1 = AM/PM
12 DS	Daylight Saving time change	0 = Off, 1 = Auto
13 TO	Temperature Display Offset	+/-3°C
15 SD	Restore Schedule Defaults	0, 1 = reset
16 FS	Restore Factory Settings	0, 1 = reset
17 OP	Optimisation	0 = Disabled, 1= Enabled

Troubleshooting

What's happening?	What it could mean...	How to fix it...
The thermostat display is blank	Faulty wiring connection	Check heating sys
	Faulty wiring connection	Check wiring at th
Display = 	Faulty temperature sensor	Replace thermostat sensor if fitted
The thermostat shows heat demand but the boiler doesn't respond	Boiler (water) already at temperature	Normal behavior –
	Faulty wiring connection	Faulty wiring connections



Conforms to protection requirements of the following directives:

EMC: 2014/30/EU and LVD: 2014/35/EU

The full text of the EU declaration of conformity is available at the following internet address:

<https://hwlhome.co/DoC>

ErP: Class V (+3%), (EU) 811/2013



WEEE Directive 2012/19/EU – Waste Electrical and Electronic Equipment directive

At the end of the product, life dispose of the packaging and product in a corresponding recycling center.



Do not dispose of the unit with the usual domestic refuse. Do not burn the product.



www.resideo.com

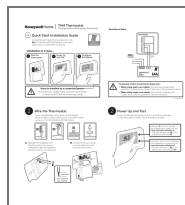
Pittway Sarl, Z.A. La Pièce 4,
1180 Rolle, Switzerland
Country of origin: UK

© 2020 Resideo Technologies, Inc. All rights reserved.

The Honeywell Home trademark is used under license from Honeywell International Inc.

This product is manufactured by Resideo Technologies, Inc. and its affiliates.

Documents / Resources



[Honeywell T4M Programmable Modulating Thermostat](#) [pdf] Installation Guide
T4M Programmable Modulating Thermostat, T4M, Programmable Modulating Thermostat

References

- [H HoneywellHome Comfort from Resideo | English](#)