



Honeywell ScanPal EDA56 Series Wi-Fi6 – WLAN Mobile Computer User Guide

[Home](#) » [Honeywell](#) » Honeywell ScanPal EDA56 Series Wi-Fi6 – WLAN Mobile Computer User Guide



ScanPal™ EDA56 Series powered by Android™
Quick Start Guide

Contents [[hide](#)]

- [1 ScanPal EDA56 Series Wi-Fi6 – WLAN Mobile Computer](#)
- [2 Out of the Box](#)
- [3 Memory Card Specifications](#)
- [4 Computer Features](#)
- [5 About the Battery](#)
- [6 Install Battery](#)
- [7 Install the Hand Strap](#)
- [8 Charge the Mobile Computer](#)
- [9 About the USB Type C Connector](#)
- [10 Turn Power On/Off](#)
- [11 Battery Replacement](#)
- [12 Screen Timeout](#)
- [13 About the Home Screen](#)
- [14 Navigation and Function Buttons](#)
- [15 About Provisioning Mode](#)
- [16 Sync Data](#)
- [17 Restart the Mobile Computer](#)
- [18 Limited Warranty](#)
- [19 Documents / Resources](#)
- [20 Related Posts](#)

Agency Models

EDA56 series: EDA56-0

Note: EDA56 mobile computers come with either a six-pin I/O connector or a two-pin connector with a USB-C port, depending on the model. Due to variations in model configurations, your computer may appear different than illustrated.

Out of the Box

Make sure that your shipping box contains these items:

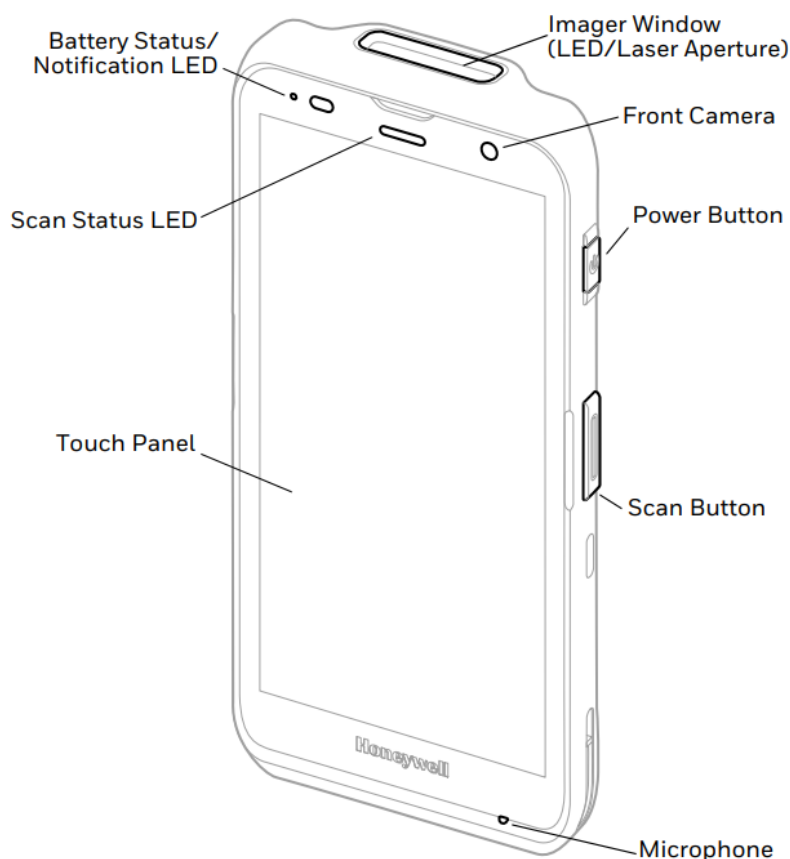
- EDA56 mobile computer
- Rechargeable li-ion battery
- 10-watt power adapter (Two-pin model only)
- Replaceable adapter plugs (Two-pin model only)
- USB charging cable (Two-pin model only)
- Hand strap (optional)

If you ordered accessories for your mobile computer, verify that they are also included with the order. Be sure to keep the original packaging in case you need to return the mobile computer for service.

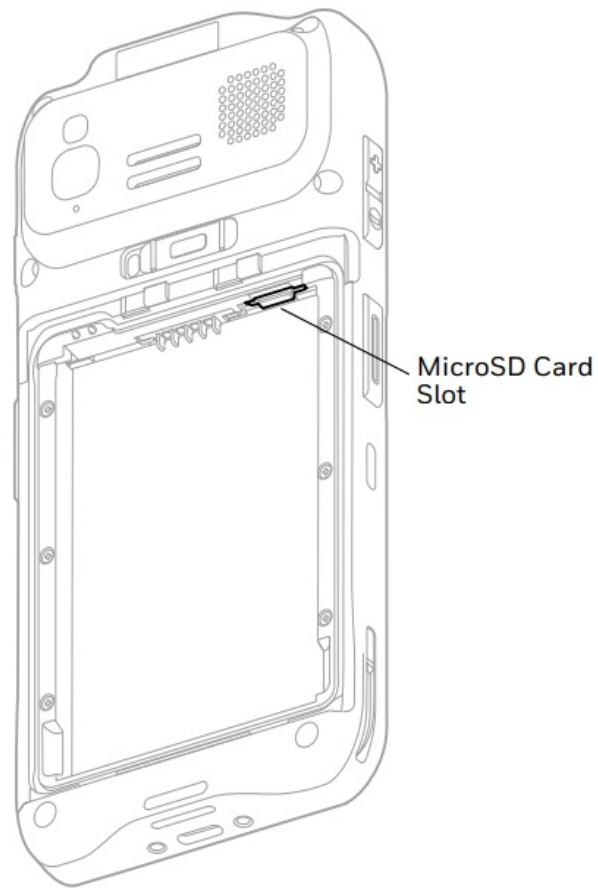
Memory Card Specifications

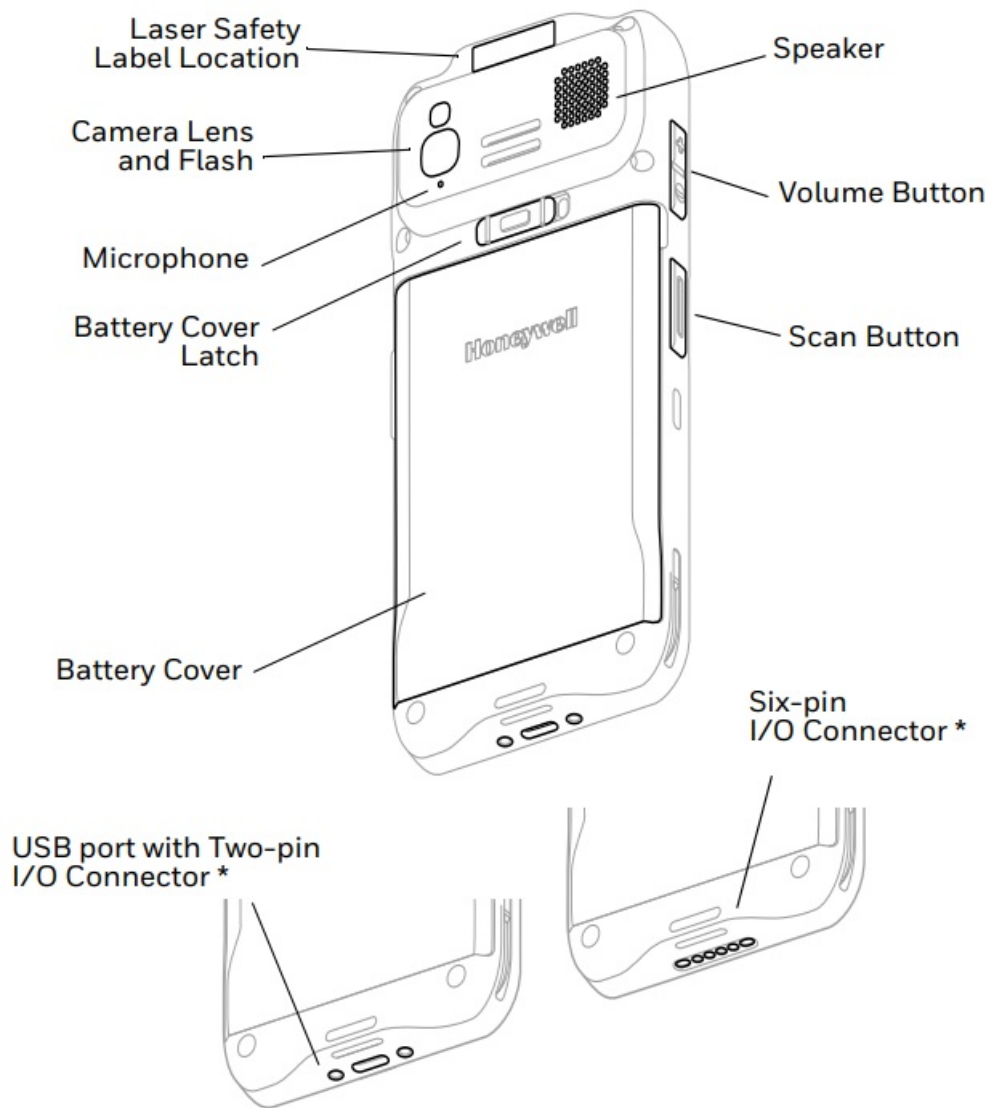
Honeywell recommends the use of Single Level Cell (SLC) industrial grade microSD™ or microSDHC™ memory cards with mobile computers for maximum performance and durability. Contact a Honeywell sales representative for additional information on qualified memory card options.

Computer Features



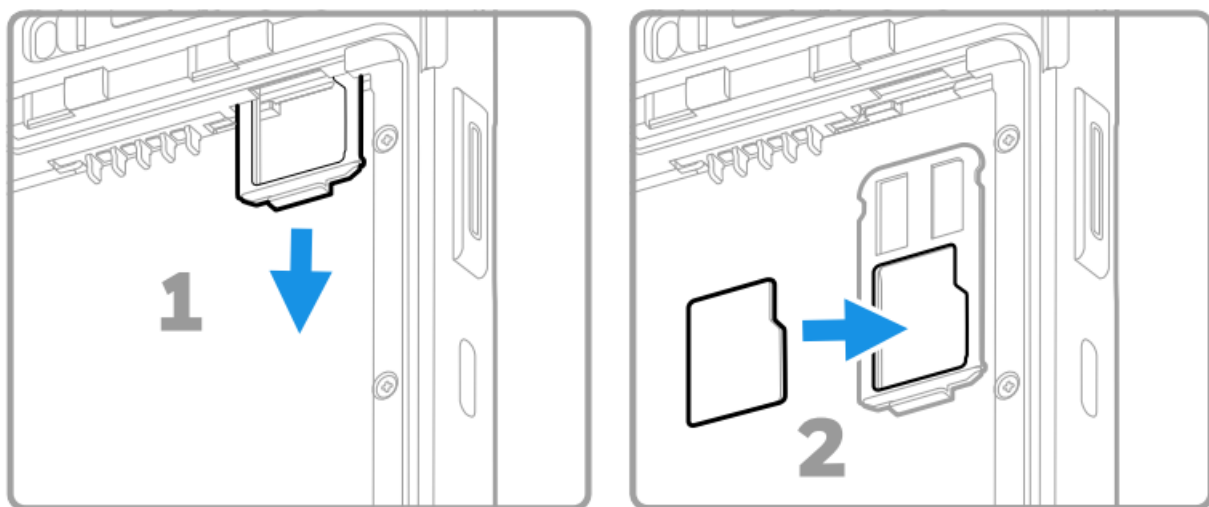
Note: Hand strap not shown.





Install a microSD Card (Optional)

Note: Format the microSD card before initial use.



Note: Always power off the computer before attempting to install or remove a card.

About the Battery

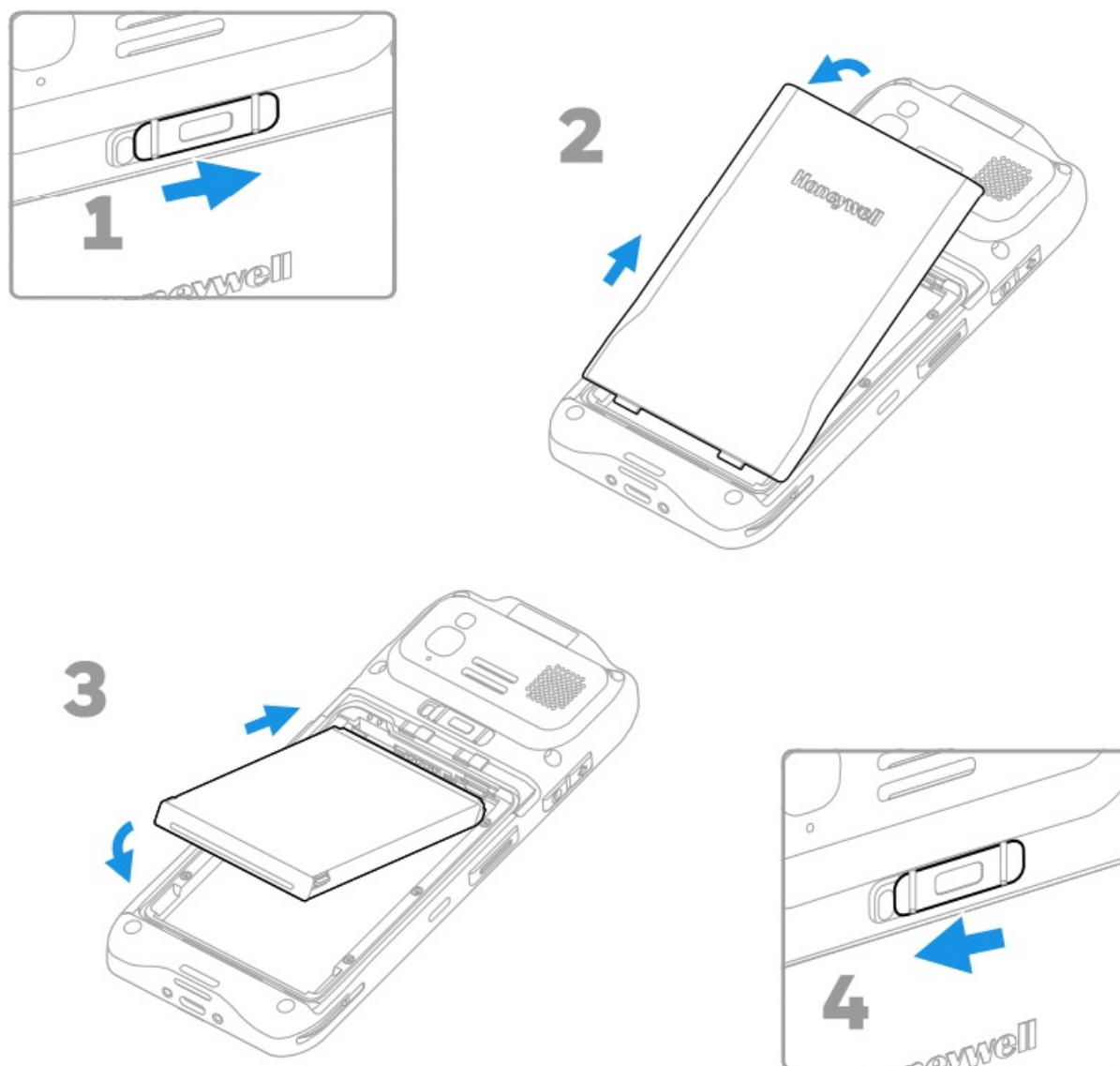
The mobile computer ships with a 3.8 VDC, 17.1 watt-hour Li-ion battery manufactured for Honeywell International Inc.

⚠ Before you attempt to use, charge or replace the battery in the device, carefully read all labels, markings and product documentation provided in the box or online at sps.honeywell.com. To learn more about Battery Maintenance for Portable Devices, go to honeywell.com/PSS-BatteryMaintenance.

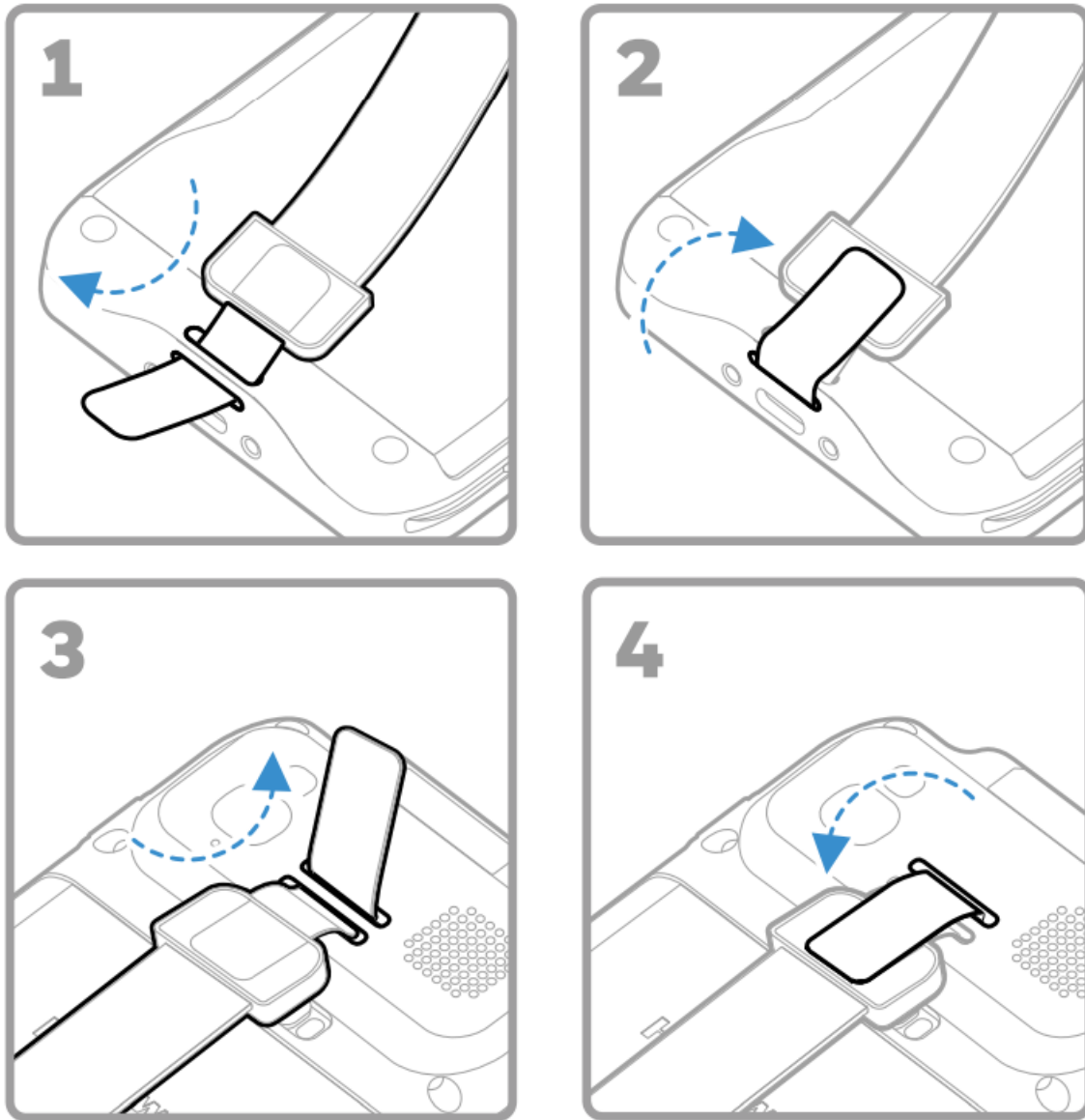
⚠ We recommend use of Honeywell Li-ion battery packs. Use of any non-Honeywell battery may result in damage not covered by the warranty.

⚠ Ensure all components are dry prior to placing the battery in the computer. Mating wet components may cause damage not covered by the warranty.

Install Battery




Install the Hand Strap




Charge the Mobile Computer

The mobile computer ships with a partially charged battery. Charge the battery with an EDA56 charging device for a minimum of 3.5 hours.

Note: Using the computer while charging the battery increases the time required to reach a full charge. If the mobile computer is drawing more current than supplied by the charging source, charging will not take place.

 We recommend the use of Honeywell accessories and power adapters. Use of any non-Honeywell accessories or power adapters may cause damage not covered by the warranty.

EDA56 series mobile computers are designed for use with EDA52 charging accessories. For more information, see the EDA52 Series Accessory Guide available for download at sps.honeywell.com.

 Ensure all components are dry prior to mating the computers and batteries with peripheral devices. Mating wet components may cause damage not covered by the warranty.

About the USB Type C Connector

On EDA56 models equipped with a USB port, you can use a USB cable to charge the mobile computer from a host device (e.g., laptop or desktop computer). The connected host device must supply a minimum power output

of 5V, 0.5A to the EDA56 or the battery will not charge.

Turn Power On/Off

The first time you power on the computer, a Welcome screen appears. You can either scan a configuration barcode or use the Wizard to manually set up the computer. Once setup is complete, the Welcome screen no longer appears on startup and Provisioning mode is automatically turned off (disabled).

To turn the computer on:


- Press and hold the Power button for approximately 3 seconds and then release.

To turn the computer off:

1. Press and hold the Power button until the options menu appears.
2. Touch Power Off.

Battery Replacement

Before removing the battery, always power off the computer.

 Improper battery replacement or incompatible device usage may result in risk of burns, fire, explosion, or other hazard. Dispose of batteries according to local regulations.

Screen Timeout

The screen timeout (sleep mode) automatically turns the touch panel display off and locks the computer to save battery power when the computer is inactive for a programmed period of time.

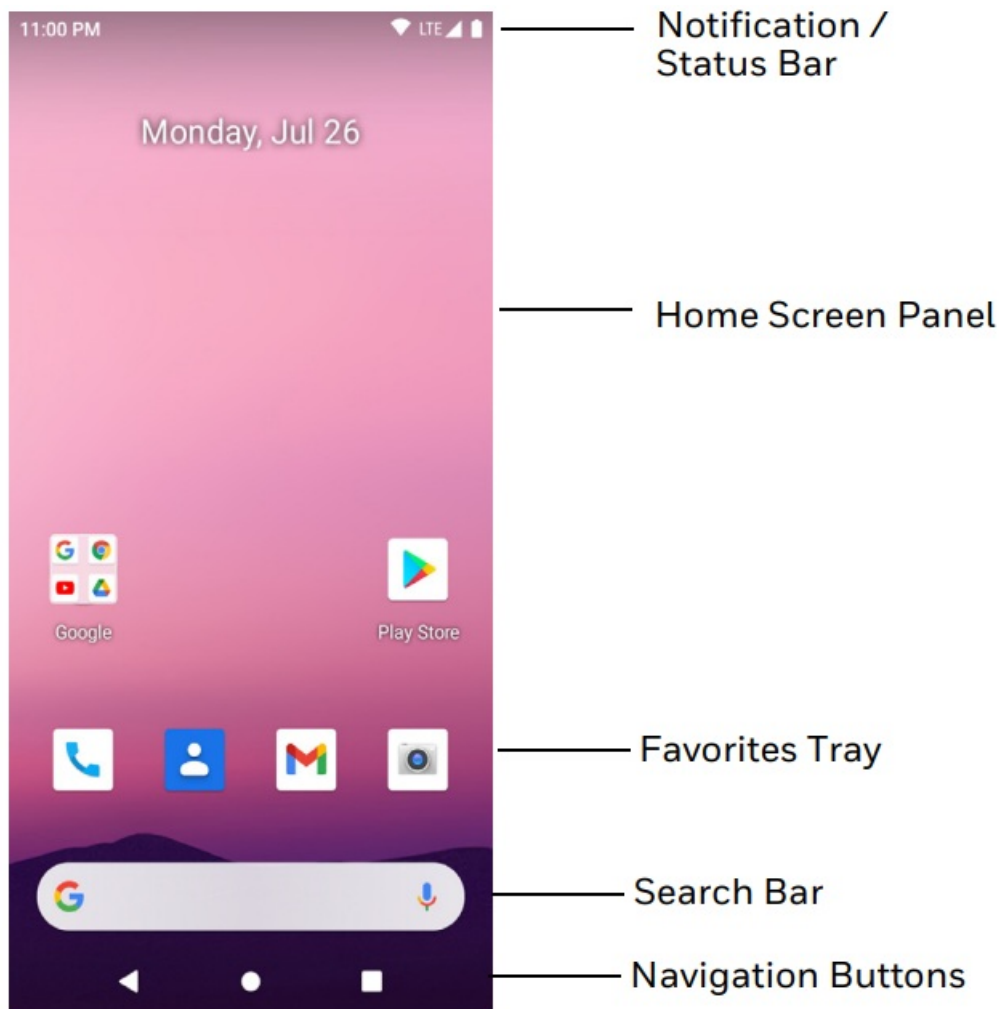
- Press and release the Power button to wake the computer.

Adjust the Screen Timeout

To adjust the amount of time before the display sleeps after inactivity:




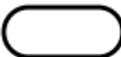

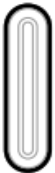

1. Swipe up on the touch screen.
2. Select Settings > Display > Advanced > Screen Timeout.
3. Select the amount of time before the display goes to sleep.

About the Home Screen



Navigation and Function Buttons

For button locations, see Computer Features on page 2.

Button	Description	
	Back	Return to the previous screen.
	Home	Return to the Home screen.
	Recent Apps	View and switch between recently used apps.
	Scan	Touch the front (on-screen) Scan button to trigger the scanner.
	Volume	Press the top of the button to raise the speaker volume. Press the bottom of button to lower the speaker volume.
	Scan	Press left or right Scan button to trigger the scanner.
	Power	<ul style="list-style-type: none"> • Turn Power On/Off • Enter/Exit Screen Timeout (sleep). • Access options menu, including: Power off and Restart.

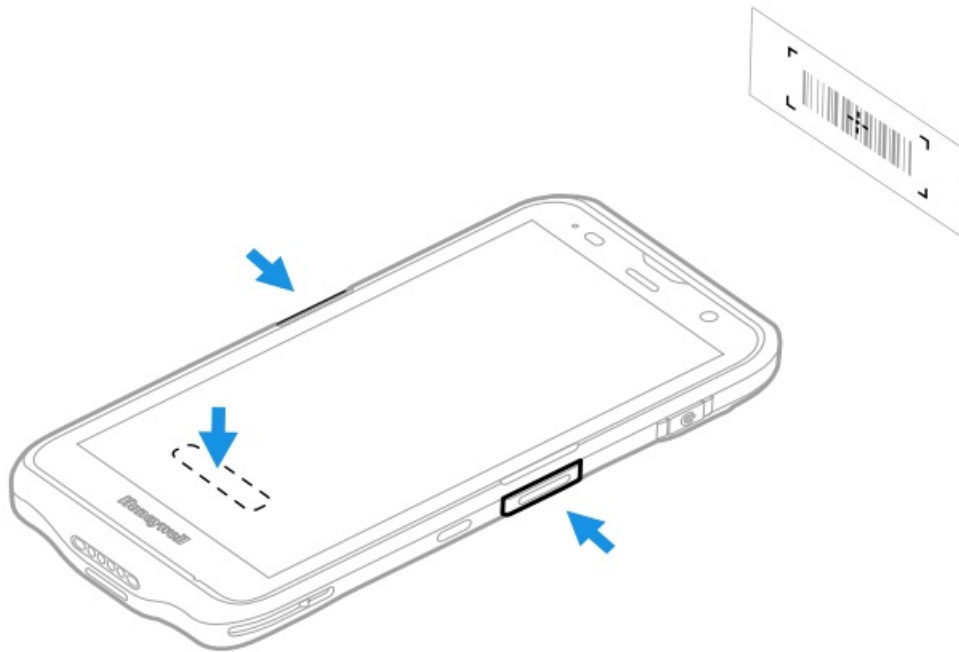
About Provisioning Mode

After completing the out-of-box set up process, Provisioning mode is automatically turned off. Scanning a barcode to install applications, certificates, configuration files, and licenses on the computer is restricted unless you enable Provisioning mode in the Settings app. To learn more, see the user guide.

Scan a Barcode with the Scan Demo

For optimum performance, avoid reflections by scanning the barcode at a slight angle.

1. Swipe up on the screen.
2. Select Demos > Scan Demo.
3. Point the computer at the barcode.
4. Touch Scan on the screen or press and hold any Scan button. Center the aiming beam over the barcode.



The decode results appear on the screen.

Note: In the Scan Demo app, not all barcode symbologies are enabled by default. If a barcode does not scan, the correct symbology may not be enabled. To learn how to modify the default app settings, see the user guide.

Sync Data

To move files between your EDA56 and a computer:

1. Connect the EDA56 to your computer using a USB charge/communication accessory.
2. On the EDA56, swipe down from the top of the screen to see the notifications panel.
3. Touch the Android System notification twice to open the options menu.
4. Select either File Transfer or PTP.
5. Open the file browser on your computer.
6. Browse to the EDA56. You can now copy, delete, and move files or folders between your computer and EDA56 as you would with any other storage drive (e.g., cut and paste or drag and drop).

Note: When Provisioning mode is turned off, some folders are hidden from view in the file browser.

Restart the Mobile Computer

You may need to restart the mobile computer to correct conditions where an application stops responding to the system or the computer seems to be locked up.

1. Press and hold the Power button until the options menu appears.
2. Select Restart.

To restart the computer if the touch panel display is unresponsive:

- Press and hold the Power button for approximately 8 seconds until the computer restarts.

Note: To learn about advanced reset options, see the user guide.

Support

To search our knowledge base for a solution or log into the Technical Support Portal and report a problem, go to

Documentation

Product documentation is available at sps.honeywell.com.

Limited Warranty

For warranty information, go to sps.honeywell.com and click

Support > Warranties.

Patents

For patent information, see www.hsmpats.com.

Trademarks

Android is a trademark of Google LLC.

Disclaimer


Honeywell International Inc. (“HII”) reserves the right to make changes in specifications and other information contained in this document without prior notice, and the reader should in all cases consult HII to determine whether any such changes have been made. HII makes no representation or warranties regarding the information provided in this publication.

HII shall not be liable for technical or editorial errors or omissions contained herein; nor for incidental or consequential damages resulting from the furnishing, performance, or use of this material. HII disclaims all responsibility for the selection and use of software and/or hardware to achieve intended results.

This document contains proprietary information that is protected by copyright. All rights are reserved. No part of this document may be photocopied, reproduced, or translated into another language without the prior written consent of HII.

Copyright © 2022 Honeywell International Inc. All rights reserved.

Documents / Resources

	<p>Honeywell ScanPal EDA56 Series Wi-Fi6 - WLAN Mobile Computer [pdf] User Guide EDA560, HD5-EDA560, HD5EDA560, ScanPal EDA56 Series, Wi-Fi6 - WLAN Mobile Computer, WLAN Mobile Computer, Mobile Computer, Computer</p>
---	--