



Honeywell ScanPal EDA56 Series Mobile Computer User Guide

[Home](#) » [Honeywell](#) » Honeywell ScanPal EDA56 Series Mobile Computer User Guide 

Contents

- [1 Honeywell ScanPal EDA56 Series Mobile Computer](#)
- [2 Product Information](#)
- [3 Product Usage Instructions](#)
- [4 Out of the Box](#)
- [5 Memory Card Specifications](#)
- [6 Computer Features](#)
- [7 Installation](#)
- [8 Charge the Mobile Computer](#)
- [9 Turn Power On/Off](#)
- [10 Screen Timeout](#)
- [11 Scan a Barcode with the Scan Demo](#)
- [12 Restart the Mobile Computer](#)
- [13 Limited Warranty](#)
- [14 Documents / Resources](#)
 - [14.1 References](#)
- [15 Related Posts](#)

Honeywell

Honeywell ScanPal EDA56 Series Mobile Computer



Product Information

The product is manufactured by BSR idware GmbH, a company based in Salzburg, Austria. The company's address is Jakob-Haringer-Str.3 A-5020 Salzburg. For more information about the company and its products, you can visit their website <https://www.bsr.at>. If you have any inquiries or require assistance, you can contact their sales team via email at sales@bsr.at.

Product Usage Instructions

1. Ensure that you have read and understood the user manual before using the product.
2. Connect the product to a power source using the provided power cable.
3. Turn on the product by pressing the power button located on the front panel.
4. Wait for the product to initialize and display the main menu on the screen.
5. Use the navigation buttons or touch screen (if available) to navigate through the menu options.
6. Select the desired function or feature from the menu.
7. Follow any on-screen prompts or instructions to complete the selected function.
8. If necessary, refer to the user manual for detailed instructions on specific functions or features.
9. After using the product, turn it off and disconnect it from the power source.
10. Store the product in a safe and dry place when not in use.

Agency Models

EDA56 series: EDA56-0

Note: EDA56 mobile computers come with either a six-pin //0 connector or a two-pin connector with a USB-C port, depending on the model. Due to variations in model configurations, your computer may appear different than illustrated.

Out of the Box

Make sure that your shipping box contains these items

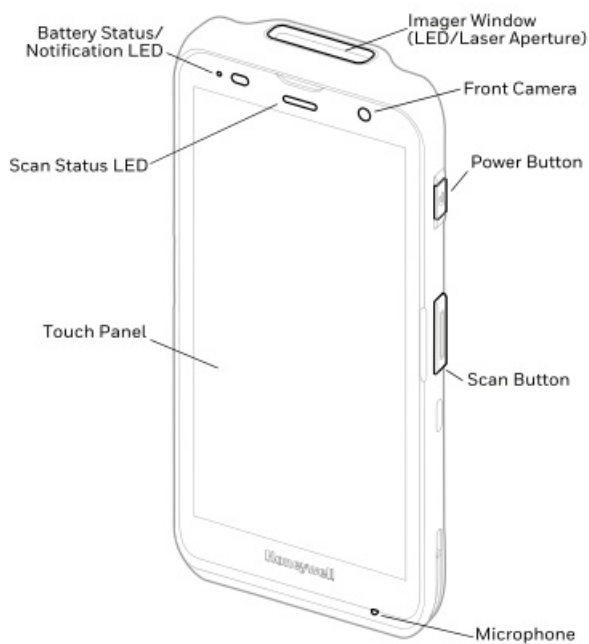
- EDA56 mobile computer
- Rechargeable li-ion battery
- 10-watt power adapter (Two-pin model only)
- Replaceable adapter plugs (Two-pin model only)
- USB charging cable (Two-pin model only)
- Hand strap (optional)

If you ordered accessories for your mobile computer, verify that they are also included with the order. Be sure to keep the original packaging in case you need to return the mobile computer for service.

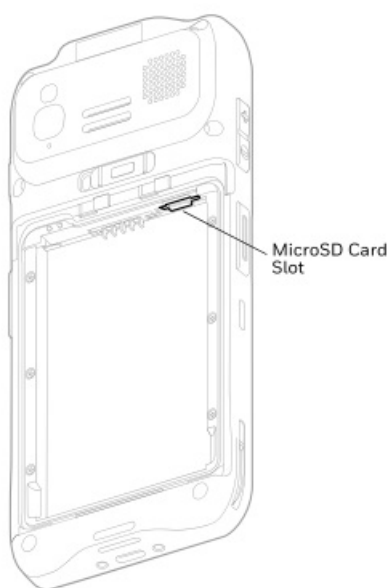
Memory Card Specifications

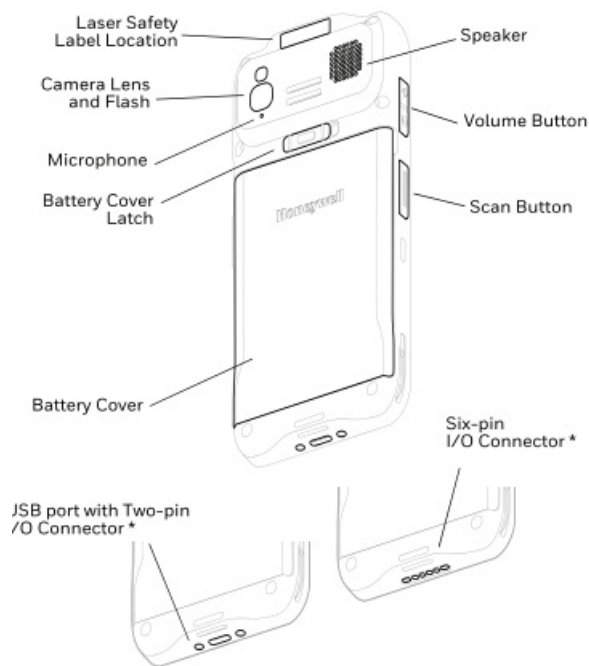
Honeywell recommends the use of Single Level Cell (SLC) industrial grade microSD™ or microSDF-IC™ memory cards with mobile computers for maximum performance and curability. Contact a Honeywell sales representative for additional information on qualified memory card options.

Computer Features



Note: Hand strap not shown.



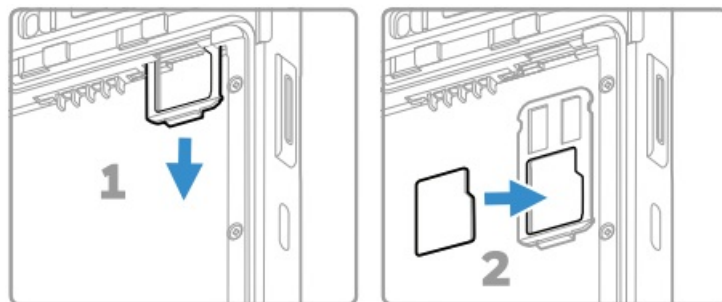


Six-pin connector or Two-pin with a USB port, depending on model.

Installation

Install a microSD Card (Optional)

Note: Format the microSD card before initial use.



Note: Always power off the computer before attempting to install or remove a card.

About the Battery

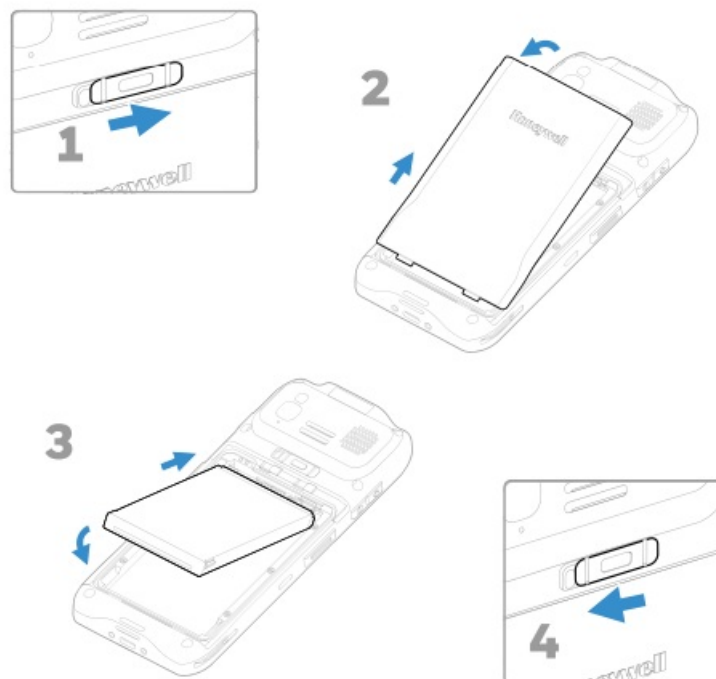
The mobile computer ships with a 3.8 VDC, 17.1 watt-hour Li-ion battery manufactured for Honeywell International Inc.

Warning

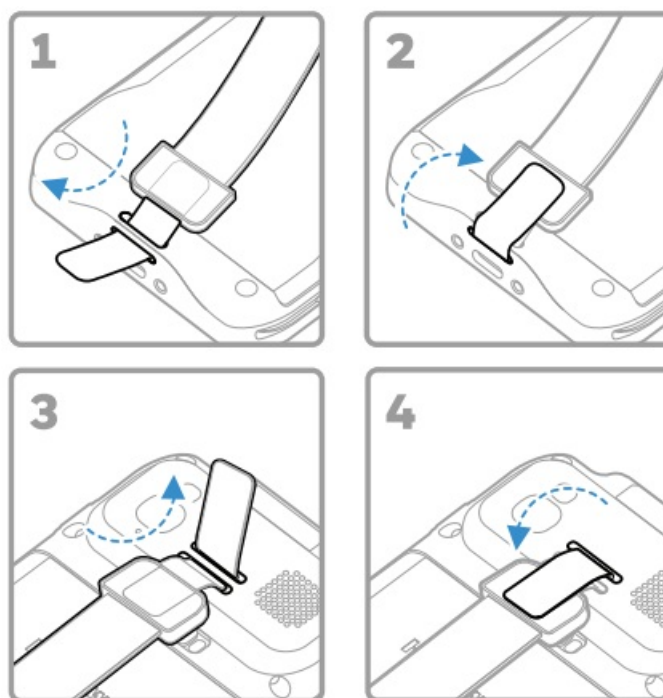
Before you attempt to use, charge or replace the battery in the device, carefully read all labels, markings and product documentation provided in the box or online at sps.honeywell.com. To learn more about Battery Maintenance for Portable Devices, go to honeywell.com/PSS-BatteryMaintenance.

- We recommend use of Honeywell Li-ion battery packs. Use of any non-Honeywell battery may result in damage not covered by the warranty. Nous recommandons l'utilisation de batteries Li-ion de la marque Honeywell. L'utilisation d'une batterie d'un autre fabricant est susceptible de provoquer des dommages non couverts par la garantie.

Install Battery



Install the Hand Strap



Charge the Mobile Computer

The mobile computer ships with a partially charged battery. Charge the battery with an EDA56 charging device for a minimum of 3.5 hours.

Note: Using the computer while charging the battery increases the time required to reach a full charge. If the mobile computer is drawing more current than supplied by the charging source, charging will not take place.

Warning: We recommend the use of Honeywell accessories and power adapters. Use of any non-Honeywell

accessories or power adapters may cause damage not covered by the warranty.

- EDA56 series mobile computers are designed for use with EDA52 charging accessories. For more information, see the EDA52 Series Accessory Guide available for download at sps.honeywell.com.

Ensure all components are dry prior to mating the computers and batteries with peripheral devices. Mating wet components may cause damage not covered by the warranty.

About the USB Type C Connector

On EDA56 models equipped with a USB port, you can use a USB cable to charge the mobile computer from a host device (e.g., laptop or desktop computer). The connected host device must supply a minimum power output of 5V, 0.5A to the EDA56 or the battery will not charge.

Turn Power On/Off

The first time you power on the computer, a Welcome screen appears. You can either scan a configuration barcode or use the Wizard to manually set up the computer. Once setup is complete, the Welcome screen no longer appears on startup and Provisioning mode is automatically turned off (disabled).

To turn the computer on:

- Press and hold the Power button for approximately 3 seconds and then release.

To turn the computer off

1. Press and hold the Power button until the options menu appears.
2. Touch Power Off.

Battery Replacement

Before removing the battery, always power off the computer. Improper battery replacement or incompatible & device usage may result in risk of burns, fire, explosion, or other hazard. Dispose of batteries according to local regulations

Screen Timeout

The screen timeout (sleep mode) automatically turns the touch panel display off and Locks the computer to save battery power when the computer is inactive for a programmed period of time.

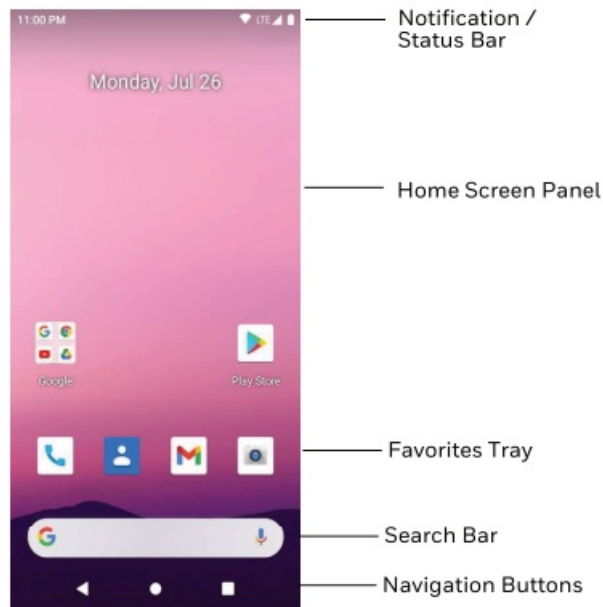
- Press and release the Power button to wake the computer.

Adjust the Screen Timeout

To adjust the amount of time before the display sleeps after inactivity:

1. Swipe up on the touch screen.
2. Select Settings > Display > Advanced > Screen Timeout.
3. Select the amount of time before the display goes to sleep.

About the Home Screen



Navigation and Function Buttons

For button Locations, see Computer Features on page 2.

Button	Description
	Back Return to the previous screen.
	Home Return to the Home screen.
	Recent Apps View and switch between recently used apps.
	Scan Touch the front (on-screen) Scan button to trigger the scanner.
	Volume Press the top of the button to raise the speaker volume. Press the bottom of button to lower the speaker volume.
	Scan Press left or right Scan button to trigger the scanner.
	Power <ul style="list-style-type: none"> • Turn Power On/Off • Enter/Exit Screen Timeout (sleep). • Access options menu, including: Power off and Restart.

About Provisioning Mode

After completing the out-of-box set up process, Provisioning mode is automatically turned off. Scanning a barcode to install applications, certificates, configuration files, and Licenses on the computer is restricted unless you enable Provisioning mode in the Settings app. To Learn more, see the user guide.

Scan a Barcode with the Scan Demo

For optimum performance, avoid reflections by scanning the barcode at a slight angle.

1. Swipe up on the screen.
2. Select Demos > Scan Demo.
3. Point the computer at the barcode.
4. Touch Scan on the screen or press and hold any Scan button. Center the aiming beam over the barcode.

The decode results appear on the screen.

Note: In the Scan Demo app, not all barcode symbologies are enabled by default. If a barcode does not scan, the correct symbology may not be enabled. To learn how to modify the default app settings, see the user guide.

Sync Data

To move files between your EDA56 and a computer:

1. Connect the EDA56 to your computer using a USB charge/communication accessory.
2. On the EDA56, swipe down from the top of the screen to see the notifications panel.
3. Touch the Android System notification twice to open the options menu.
4. Select either File Transfer or PTP.
5. Open the file browser on your computer.
6. Browse to the EDA56. You can now copy, delete, and move files or folders between your computer and EDA56 as you would with any other storage drive (e.g., cut and paste or drag and drop).

Note: When Provisioning mode is turned off, some folders are hidden from view in the file browser.

Restart the Mobile Computer

You may need to restart the mobile computer to correct conditions where an application stops responding to the system or the computer seems to be Locked up.

1. Press and hold the Power button until the options menu appears.
2. Select Restart.

To restart the computer if the touch panel display is unresponsive:

- Press and hold the Power button for approximately 8 seconds until the computer restarts.

Note: To learn about advanced reset options, see the user guide.

Support

To search our knowledge base for a solution or log into the Technical Support Portal and report a problem, go to honeywell.com/PSTechnicalsupport.

Documentation

Product documentation is available at sps.honeywell.com.

Limited Warranty

For warranty information, go to sps.honeywell.com and click Support › Warranties.

Patents

For patent information, see www.hsmpats.com.

Trademarks

Android is a trademark of Google LLC.

Disclaimer


Honeywell International Inc. ("HII") reserves the right to make changes in specifications and other information contained in this document without prior notice, and the reader should in all cases consult HII to determine whether any such changes have been made. HII makes no representation or warranties regarding the information provided in this publication.

HII shall not be liable for technical or editorial errors or omissions contained herein; nor for incidental or consequential this materrat/Hindisciamsaturesponsibiltyromineselection°F and use of software and /or hardware to achieve intended results.

This document contains proprietary information that is protected by copvright. All rights are reserved. No part of this document may be photocopied, reproduced, or translated into another language without the prior written consent of HI.
Copyright © 2022 Honeywell International Inc. All rights reserved.

BSR idware GmbH Jakob-Haringer-Str.3 A-5020 Salzburg <https://www.bsr.at>
sales@bsr.at

Documents / Resources

	<p>Honeywell ScanPal EDA56 Series Mobile Computer [pdf] User Guide ScanPal EDA56 Series Mobile Computer, ScanPal EDA56 Series, Mobile Computer, Computer</p>
--	--

References

- [BSR Barcode und RFID](#)