

[Skip to content](#)

Manuals+

User Manuals Simplified.



Honeywell PROSiXPANIC 2 Button Wireless Panic Sensor Installation Guide

[Home](#) » [Honeywell](#) » Honeywell PROSiXPANIC 2
Button Wireless Panic Sensor Installation Guide

Honeywell Home

PROSiXPANIC 2-Button Wireless Panic Sensor

Contents [hide](#)

[1 Installation Instructions](#)

[2 Enroll and Program the PROSiXPANIC](#)

[3 Specifications](#)

[4 Support and Warranty](#)

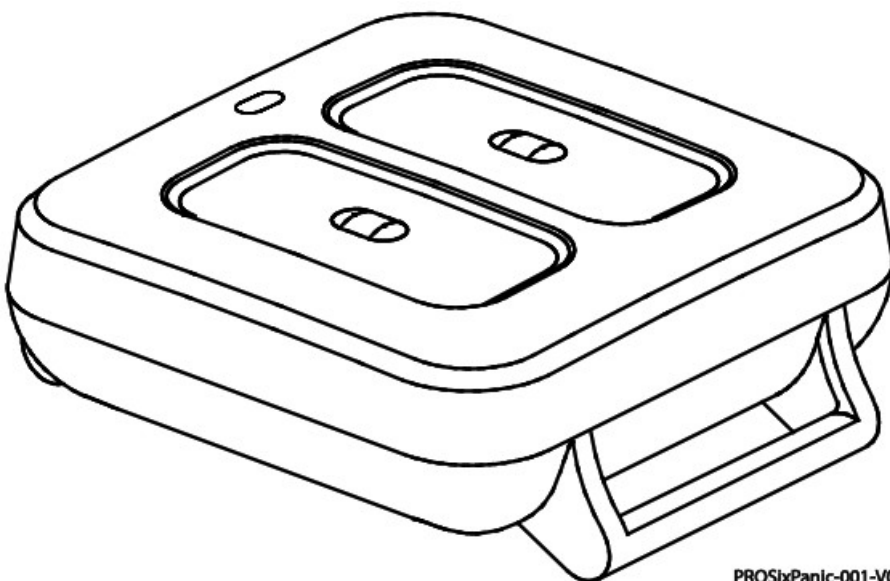
[5 Documents / Resources](#)

[6 Related Posts](#)

Installation Instructions

This bi-directional wireless panic sensor is intended for use with Honeywell Home controls that support PROSiXTM series devices. The device can be used with a belt clip, lanyard, or wristband.

To activate, press and hold both buttons briefly until the LED flashes. To clear the alarm at the control, enter a user code. To clear the memory of the alarm, select Disarm and enter a user code.



PROSiXPanic-001-V0

Enroll and Program the PROSiXPANIC

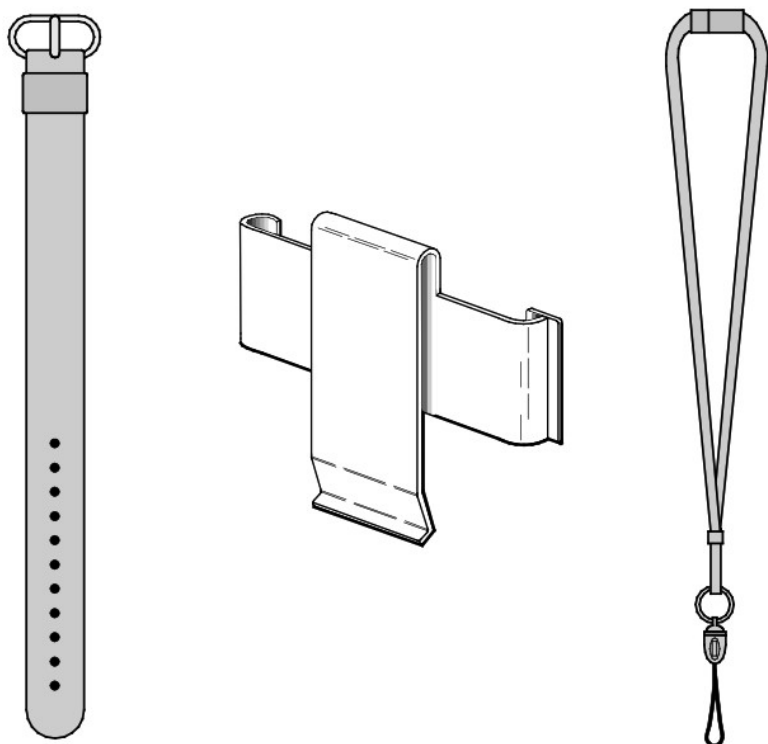
Follow instructions in the Controller's programming guide.

1. Set the controller in Programming Mode and when prompted:
2. Press and hold both buttons briefly until the LED flashes to activate the enrollment process
3. The LED flashes green during enrollment (up to about 20 seconds). The device sends its unique MAC ID (Serial Number) and Services information to the controller. **NOTE:** Enrollment time varies depending on the signal strength between the device and the controller.
4. When done, the LED lights solid green for 3 seconds to confirm enrollment. If enrollment is not confirmed, press and hold both buttons briefly again to restart the enrollment process.

IMPORTANT: Once enrolled in a system, the PROSiXPANIC cannot be used with another controller until it is removed from the current controller. When removed from a system, the sensor will revert to factory default settings.

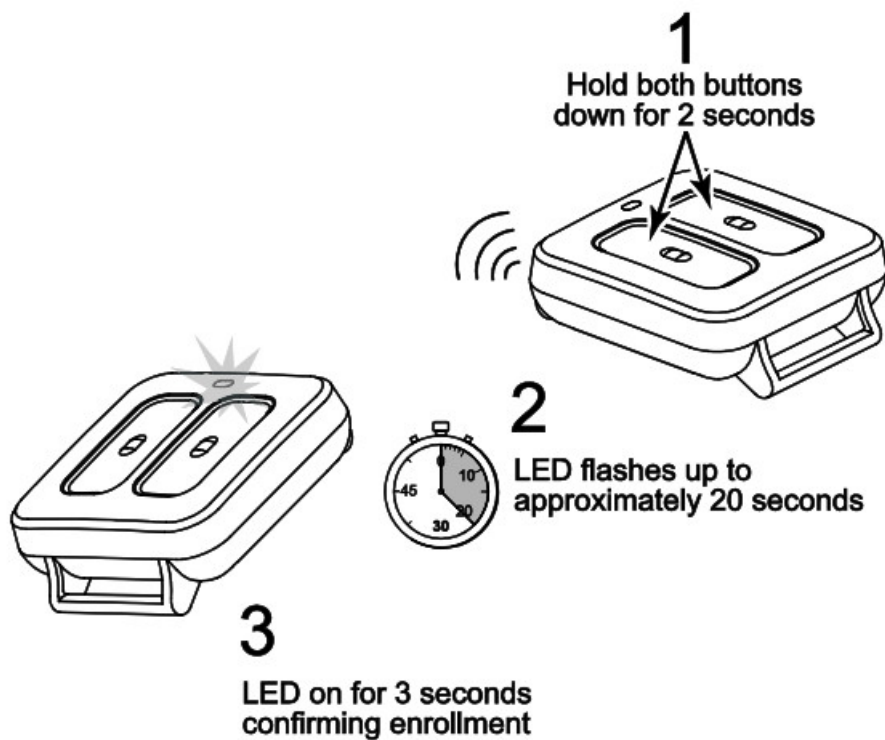
After Enrolling: Verify adequate signal strength by conducting a sensor test (see controller's instructions). LED Indications Green flashing: lights when the unit is transmitting Red Flashing: indicates low battery (lights during button press)

The device can be used with a belt clip, lanyard, or wristband.



LED Indications Green flashing: lights when the unit is transmitting Red Flashing: indicates low battery (lights during button press)

You must enroll the device in the control. Refer to the control's programming instruction for detailed procedures.



24-Hour Enrollment Deletion and Default

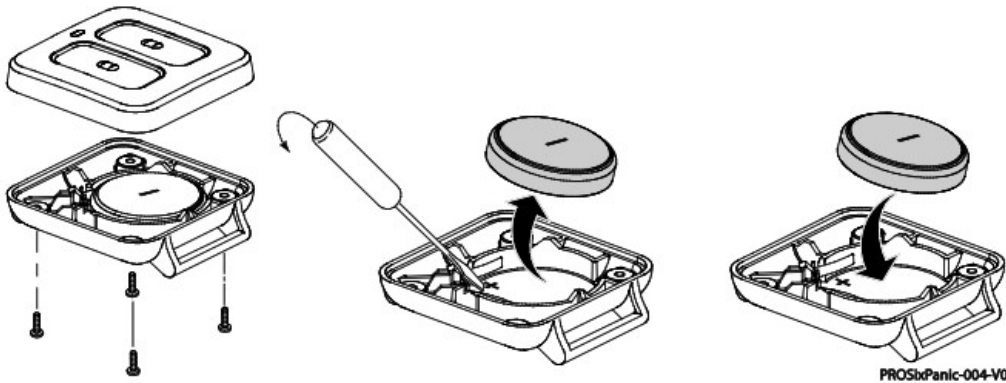
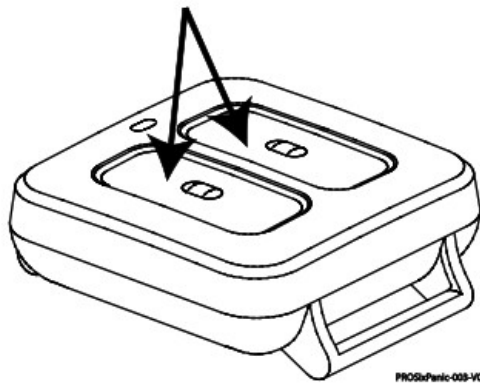
If the device is enrolled in a panel different than the intended panel, and you are unable to delete it from the unintended panel, reset the device to factory default setting: Press and hold both buttons for 15 seconds. When successful, the LED comes back on flashing. The device self-deletes from the panel it was enrolled in. This procedure is available for 24 hours after enrollment with a panel and the device remains powered (battery installed).

Battery Replacement

When the battery is low, the LED flashes red during transmission. To replace the battery:

1. Remove the screws from the back housing and use a screwdriver to gently separate the front and back housings.
2. Use a screwdriver to carefully remove the battery. 3. Wait 10 seconds or press a button for 2 seconds to ensure full power discharge.
4. Insert a new 3V Coin Cell battery as shown. Recommended replacement battery: Recommended Batteries: 3V Coin Cell Duracell DL2450; Panasonic CR2450; Energizer CR2450
5. Replace the front housing and secure the housings with the cover screw.

Press and hold both buttons for 15 seconds.



BATTERY CAUTION: Risk of fire, explosion, and burns. Do not recharge, disassemble, heat above 212°F (100°C), or incinerate. Dispose of used batteries properly. Keep away from children.

NOTE: Constant exposure to high or low temperature or high humidity may reduce battery life.

Specifications

Battery: 1 x 3V Coin Cell, Duracell DL2450; Panasonic CR2450; Energizer CR2450

RF Frequency: 2.4GHz

Operating Temperature: 0° to 50° C / 32° to 122° F

(Agency compliance 0° to 49° C / 32° to 120° F)

Relative Humidity: 95% max. (Agency compliance 93% max.), non-condensing

Dimensions: 0.5" H x 1.5" L x 1.5" W / 13 mm H x 38 mm L x 38 mm W



Approval Listings:

FCC / IC cETLus Listed

Conforms to UL1023, UL985, & UL1637 Certified to ULC ORDC1023 & ULC-S545

Home Health Care, Household Fire & Burglar Control Unit Accessory

Other Standards: RoHS

Product must be tested at least once each year.

IMPORTANT SECURITY NOTICE Please inform the User about the security importance of their wireless sensor, and what to do if it is lost. They should immediately notify the Dealer/Installer of a lost or stolen sensor. The Dealer/Installer will then remove the sensor programming from the security system.

FEDERAL COMMUNICATIONS COMMISSION (FCC) & INDUSTRY CANADA (IC) STATEMENTS The user shall not make any changes or modifications to the equipment unless authorized by the Installation Instructions or User's Manual. Unauthorized changes or modifications could void the user's authority to operate the equipment.

CLASS B DIGITAL DEVICE STATEMENT This equipment has been tested and found to comply with the limits for a Class B digital device, as defined by FCC Rules Part 15.105. The Class B Digital Device statement can be viewed at:

<https://customer.resideo.com/en-US/support/residential/codes-and-standards/FCC15105/Pages/default.aspx>

FCC / IC STATEMENT This device complies with Part 15 of the FCC Rules, and Industry Canada's license-exempt RSS. Operation is subject to the following two conditions: (1) This device may not cause harmful interference, and (2) This device must accept any interference received, including interference that may cause undesired operation. Responsible Party / Issuer of Supplier's Declaration of Conformity: Ademco Inc., a subsidiary of Resideo Technologies, Inc., 2 Corporate Center Drive., Melville, NY 11747, Ph: 516-577-2000

RF EXPOSURE

Warning The antenna(s) used for this device must not be co-located or operating in conjunction with any other antenna or transmitter except in accordance with FCC and ISED multi-transmitter product procedures.

REFER TO THE INSTALLATION INSTRUCTIONS FOR THE CONTROL WITH WHICH THIS DEVICE IS USED, FOR DETAILS REGARDING THE LIMITATIONS OF THE ENTIRE ALARM SYSTEM.

Support and Warranty

For the latest documentation and online support information, please go to:

<https://mywebtech.honeywellhome.com/>

For the latest warranty information, please go to: www.security.honeywellhome.com/warranty

For patent information, see <https://www.resideo.com>



The product should not be disposed of with other household waste. Check for the nearest authorized collection centers or authorized recyclers. The correct disposal of end-of-life equipment will help prevent potential negative consequences for the environment and human health.

Any attempt to reverse-engineer this device by decoding proprietary protocols, de-compiling firmware, or any similar actions is strictly prohibited.

The Honeywell Home Trademark is used under license from Honeywell International Inc.

This product is manufactured by Resideo and its affiliates.

resideo

2 Corporate Center Drive, Suite 100

P.O. Box 9040, Melville, NY 11747

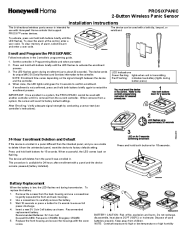
©2020 Resideo Technologies, Inc.

www.resideo.com

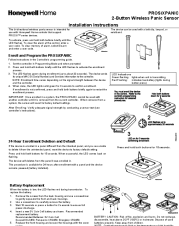


PROSiXPANIC 800-25223B 2/19 Rev B

Documents / Resources



[Honeywell PROSiXPANIC 2 Button Wireless Panic Sensor](#) [pdf] Installation Guide
PROSiXPANIC, 2 Button Wireless Panic Sensor, Wireless Panic Sensor, Panic Sensor, Sensor



[Honeywell PROSiXPANIC 2 Button Wireless Panic Sensor](#) [pdf] Instruction Manual
PROSiXPANIC, 2 Button Wireless Panic Sensor, Wireless Panic Sensor, Panic Sensor

[Manuals+](#),

- [home](#)
- [privacy](#)