



Honeywell New Style Powerheads V4044C / V8044C,F Installation Guide

[Home](#) » [Honeywell](#) » Honeywell New Style Powerheads V4044C / V8044C,F Installation Guide 

Honeywell

Contents

- [1 Honeywell New Style Powerheads V4044C / V8044C,F Installation Guide](#)
- [2 APPLICATION](#)
- [3 SPECIFICATIONS](#)
- [4 INSTALLATION](#)
- [5 Documents / Resources](#)
- [6 Related Posts](#)

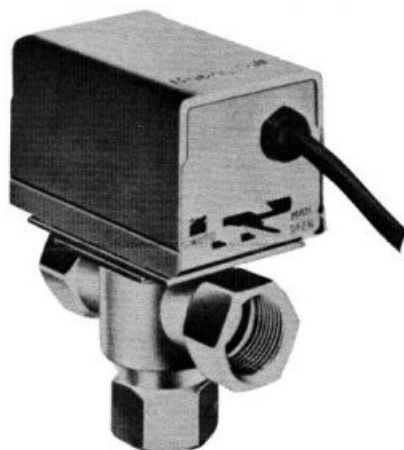
Honeywell New Style Powerheads V4044C / V8044C,F Installation Guide



This is a legacy product document supported by Resideo. It is no longer manufactured

APPLICATION

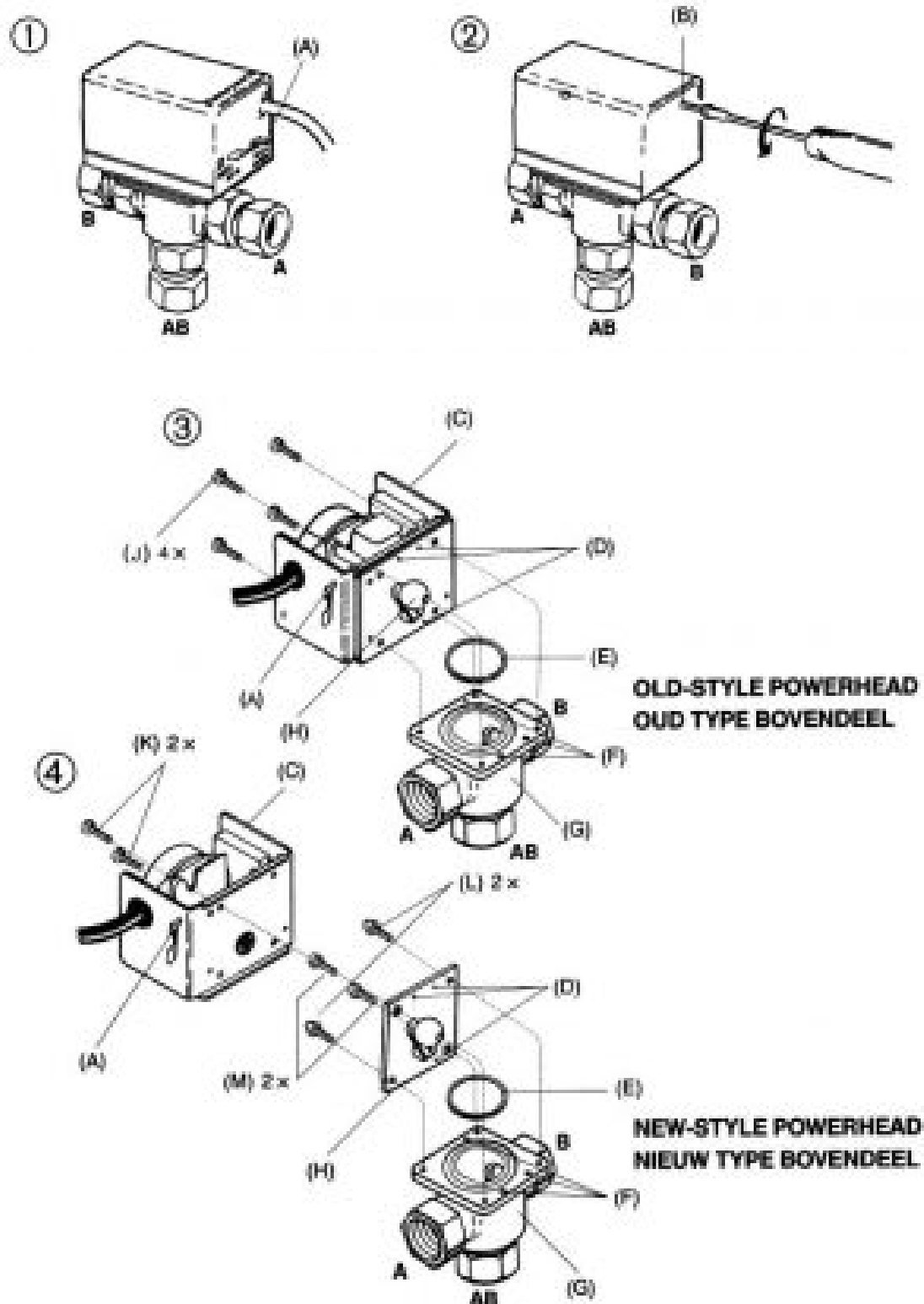
The new-style powerheads for the V4044/V8044 motorized diverting valve consists of a motorized head and an adaptor plate with rubber ball plug. The new powerheads are field replacements for the current powerheads on Honeywell 3-way valves. These motorized diverting water valves are used mainly in central heating boilers which also supply domestic hot water. This new-style powerhead directly replaces the oldstyle powerhead. The construction of the new-style is such that the motorized head can be field replaced without draining the heating system. New powerheads can be readily recognized by the small dimple on top of the cover. Check the table on the back page to ensure the powerhead matches the diverting valve number.



SPECIFICATIONS

- **End Switch Rating:** 2.0 A at 250 Vac, 50 Hz.
- **Power Consumption:** 6 VA.
- **Maximum Ambient Temperature:** 50° C (122° F).

- Length Leadwire: ± 90 cm.



ATTENTION

Ensure that the pins (D) engage their mating recesses (F). Don't secure the screws too tight!

INSTALLATION

Removing old-style powerhead from valve body (See Fig. 1, Fig. 2, and Fig. 3)

NOTE: It is not necessary to remove the valve body from the pipeline, but the system must be drained of water before beginning the installation unless isolating valves have been fitted.

1. Switch power supplies OFF.
2. Disconnect electrical leads, carefully noting the position and colour of each lead.
3. Place the manual operating lever (A) in the MAN. OPEN position. (Fig. 1).
4. Remove cover. (Fig. 2).
5. Remove the four screws (J) that secure power head (C) to the valve body (G) and remove the old-style power head (Fig. 3). Also, remove the O-ring (E) from the valve.

Removing new-style powerhead with adaptor plate from valve body (See Fig. 1, Fig. 2, and Fig. 4)

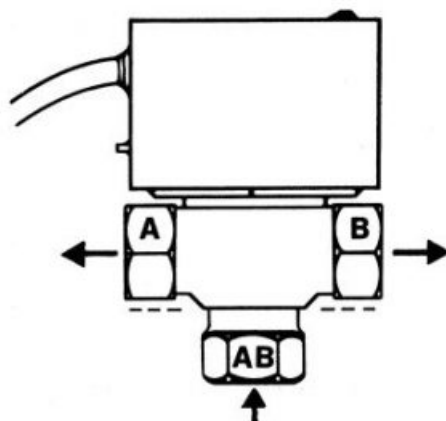
NOTE: It is not necessary to drain the system if the valve body in the pipeline is fitted with an adaptor plate.

1. Switch power supplies OFF.
2. Disconnect electrical leads carefully noting the position and colour of each lead.
3. Place the manual operating lever (A) in the MAN. OPEN position. (Fig. 1).
4. Remove cover. (Fig. 2).
5. Remove the two screws (K) that secure the head (C) to the valve body adaptor assembly (G) and remove the power head from the adapter plate (H) (Fig. 4).
6. If only the head needs to be replaced, continue at point 4 of "Installing replacement head and adapter plate".
7. Remove the four screws (L&M) that secure the adapter plate (H) to the valve body assembly (G) and take off adapter plate with rubber ball plug. Also remove O-ring (E) from the valve (Fig. 4).

Installing replacement head and adapter plate

1. Insert the new O-ring (E) into the circular slot on top of the valve body. (Fig. 4).
2. Place the adaptor plate (H) on the valve body (G) ensuring that the three guiding pins (D) engage their mating recesses (F) on the powerhead.
3. Secure the adaptor plate with the four hex-nut screws (L&M) provided – N.B. the four hex-nut screws are not identical. The screws are placed diagonally in pairs. The hex-nut screws with recessed threads and shoulder shank (M) fit in the larger holes and are used for fastening the screws (K) of the adaptor plate (Fig. 4).
4. Place the manual operating lever (A) of the replacement head in the MAN OPEN position (A, Fig. 1) and fit the head onto the valve body assembly – ensuring that the shaft seats correctly (K, Fig. 4).
5. Secure the head on the valve body adaptor assembly (G) with the two screws (K) provided.
6. Reconnect the wiring ensuring that the leads are reconnected according the colour code of the old-style powerhead.
7. Replace cover (Fig. 2).

Always refer to the electrical wiring diagram of the installation in case of possible variations.



	Colour Code Leads:				
	a = brown b = blue c = yellow/green d = orange e = grey f = white				
24V, 50 Hz	O/S. number (complete valve)	V8044C...	V8044F1001	V8044F1043	V8044F1218 V8044F1235
	Powerhead	40002916-000	40002916-016	---	40002916-004
	Adapter plate with rubber ball plug	40002916-001	40002916-001	40002916-001	40002916-001
	Complete powerhead (powerhead + adapter plate and rubber ball plug)	40002917-004	40002917-016	---	40002917-004
220V, 50Hz	O/S. number (complete valve)	V4044C...	V4044F1004	V4044F1008	---
	Powerhead	40002916-001	40002916-012*	40002916-018	---
	Adapter plate with rubber ball plug	40002916-001	40002916-001	40002916-001	---
	Wirecode Decoding:				
	a = brown b = blue c = yellow/green d = orange e = grey f = white				

24V, 50 Hz	Typenummer complete verdeelafsluiter	V8044C...	V8044F1001	V8044F1043	V8044F1218 V8044F1235
	Motorgedeelte	40002916-000	40002916-016	---	40002916-004
	Tussenplaat met afsluiterbal	40002916-001	40002916-001	40002916-001	40002916-001
	Compleet leveringsel (motorgedeelte + tussenplaat met bal)	40002917-004	40002917-016	---	40002917-004
220V, 50Hz	Typenummer complete verdeelafsluiter	V4044C...	V4044F1004	V4044F1008	---
	Motorgedeelte	40002916-001	40002916-012*	40002916-018	---
	Tussenplaat met afsluiterbal	40002916-001	40002916-001	40002916-001	---

There are no complete powerheads available as replacements for the V4044-types. There is no powerhead or complete powerhead available as replacement for V8044F1043.

*Do not connect leadwire F.

Honeywell

Automation and Control Solutions

Honeywell International Inc.

1985 Douglas Drive North

Golden Valley, MN 55422

customer.honeywell.com

Honeywell B.V.
Laarderhoogtweg 18
1101 EA Amsterdam Z.O.
T (0 20) 5 65 69 11
F (0 20) 5 65 66 00
www.honeywell.nl

® U.S. Registered Trademark
© 2010 Honeywell International Inc.
95C-10574ED—01 T.D. Rev. 09-10
Printed in U.S.A.

Read More About This Manual & Download PDF:

Documents / Resources

	<p>Honeywell New Style Powerheads V4044C / V8044C,F [pdf] Installation Guide New Style Powerheads V4044C, V8044C, V8044F</p>
--	--