



# Honeywell DEX-BLE-10 DEX Bluetooth Wireless Adapter User Guide

[Home](#) » [Honeywell](#) » Honeywell DEX-BLE-10 DEX Bluetooth Wireless Adapter User Guide 

Honeywell DEX-BLE-10 DEX Bluetooth Wireless Adapter User Guide



Preliminary Draft, Not for Release, For Review Purposes Only

## Contents

- [1 Out of the Box](#)
- [2 Adapter Features](#)
- [3 About the Battery](#)
- [4 Charge the Battery](#)
- [5 USB Charge Cable](#)
- [6 Turn Power On/Off](#)
- [7 Connect the DEX-BLE-10](#)
- [8 Pair the DEX-BLE-10 with a Mobile Computer](#)
- [9 Bluetooth Communication Status](#)
- [10 Battery Status](#)
- [11 Battery Removal](#)
- [12 Support](#)
- [13 Documentation](#)
- [14 Limited Warranty](#)
- [15 Patents](#)
- [16 Trademarks](#)
- [17 Disclaimer](#)
- [18 FCC Statements](#)
- [19 Documents / Resources](#)
  - [19.1 References](#)
- [20 Related Posts](#)

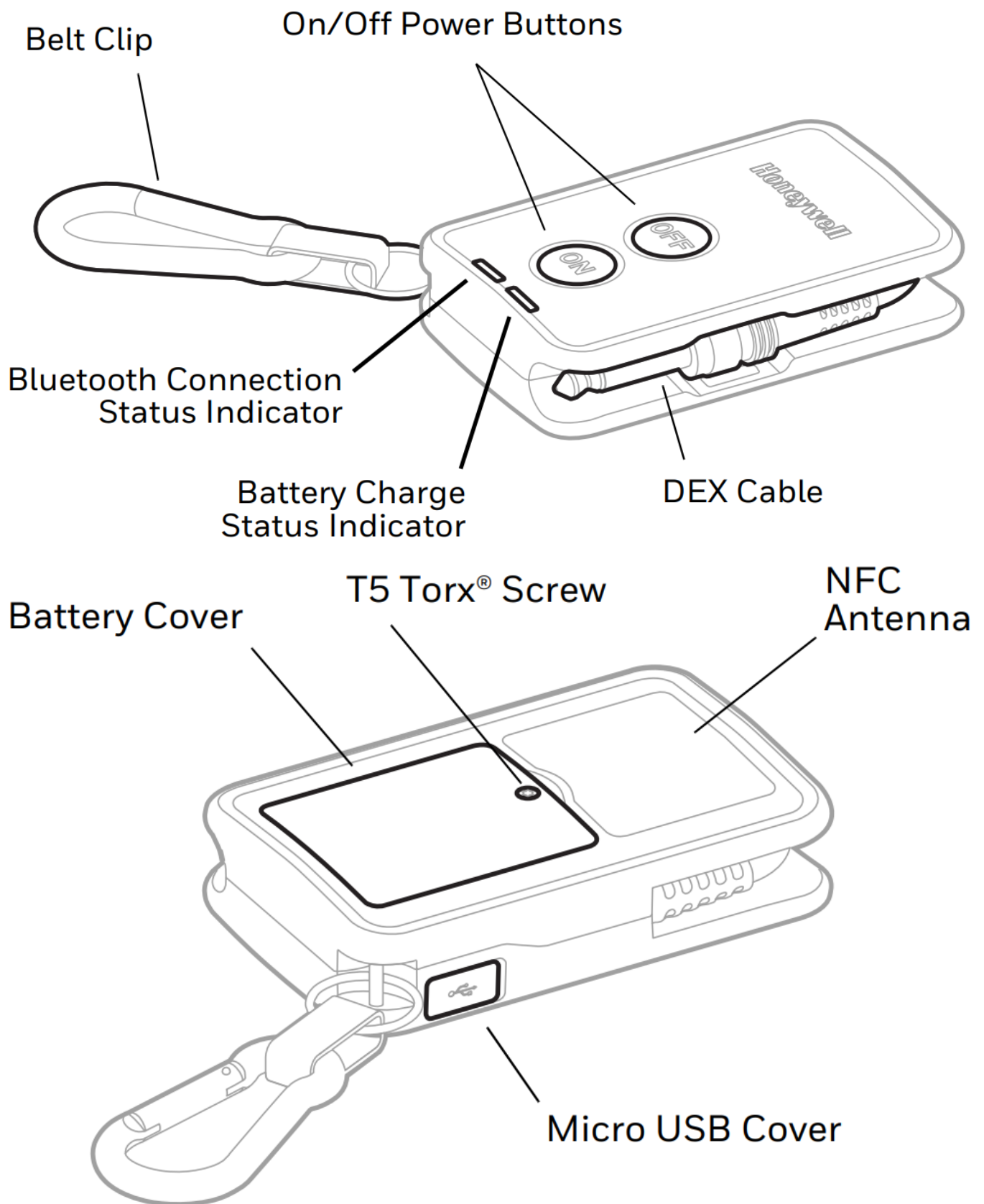
## Out of the Box

Make sure that your shipping box contains these items:

- DEX wireless adapter (Model DEX-BLE-10)
- Rechargeable 3.7 VDC Li-ion battery (Model DEX-10-BATTERY)
- USB charge cable, type A to micro B
- Power adapter with regional plug
- Regulatory Sheet

If any of these items are missing or appear damaged, contact your Customer Account Representative. Keep the original packaging in the event that you need to return the DEX adapter for service or if you want to store it while not in use.

## Adapter Features



### About the Battery

The DEX-BLE-10 ships with an installed Li-ion 3.7 VDC, 750 mAh battery manufactured for Honeywell International Inc. The operating temperature is -20°C (-4 °F) to 60°C (140 °F)

 **Use only Honeywell Li-ion battery pack model DEX-10-BATTERY.**

**⚠ Ensure all components are dry prior to placing the battery in the DEX-BLE-10. Mating wet components may cause damage not covered by the warranty.**

## Charge the Battery

The DEX-BLE-10 ships with a partially charged battery. Charge the battery for a minimum of **4 hours** before initial use.

**⚠ We recommend the use of Honeywell accessories and power adapters. Use of any non-Honeywell accessories or power adapters may cause damage not covered by the warranty.**

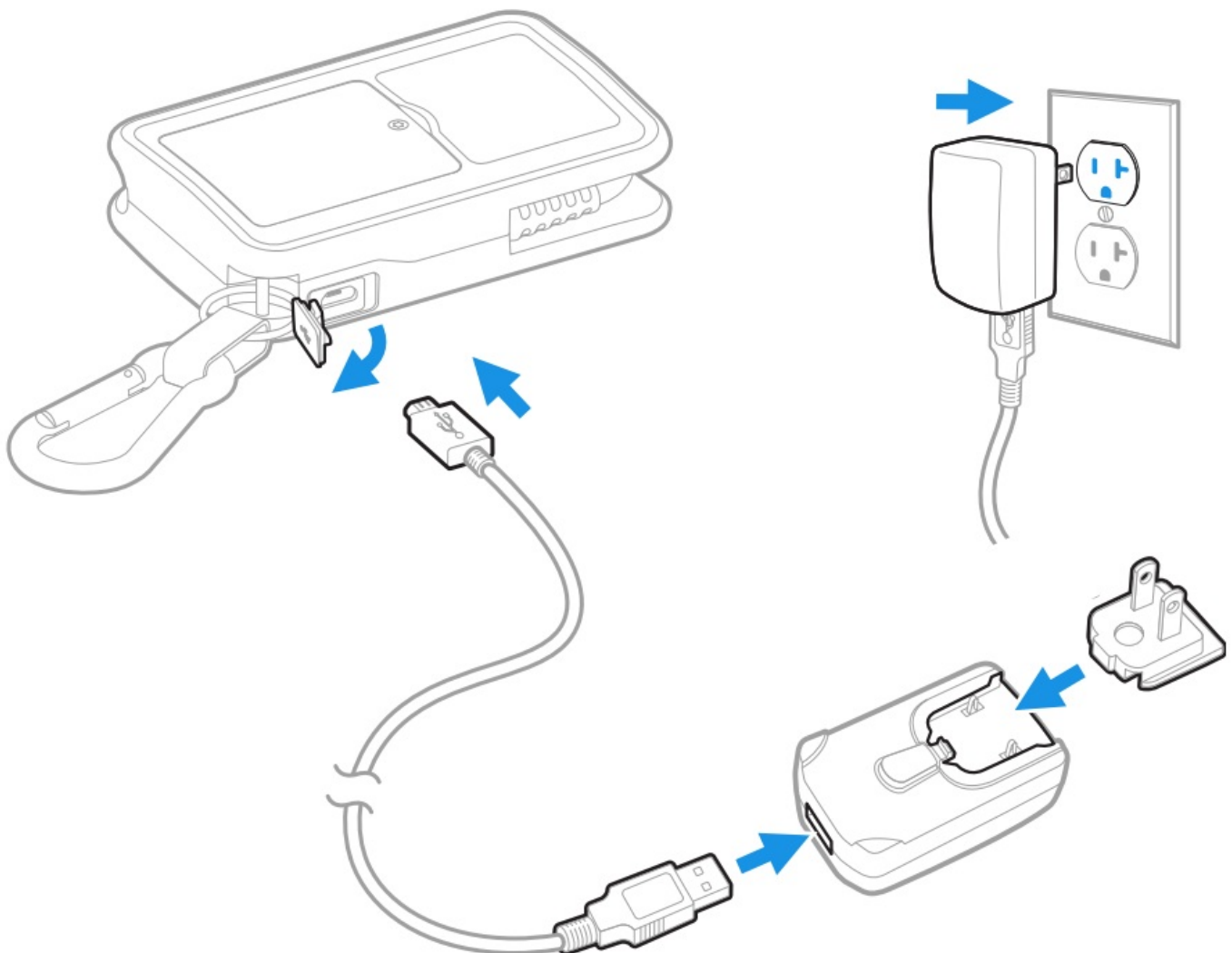
## USB Charge Cable

The USB cable provides two options for charging the DEX wireless adapter.

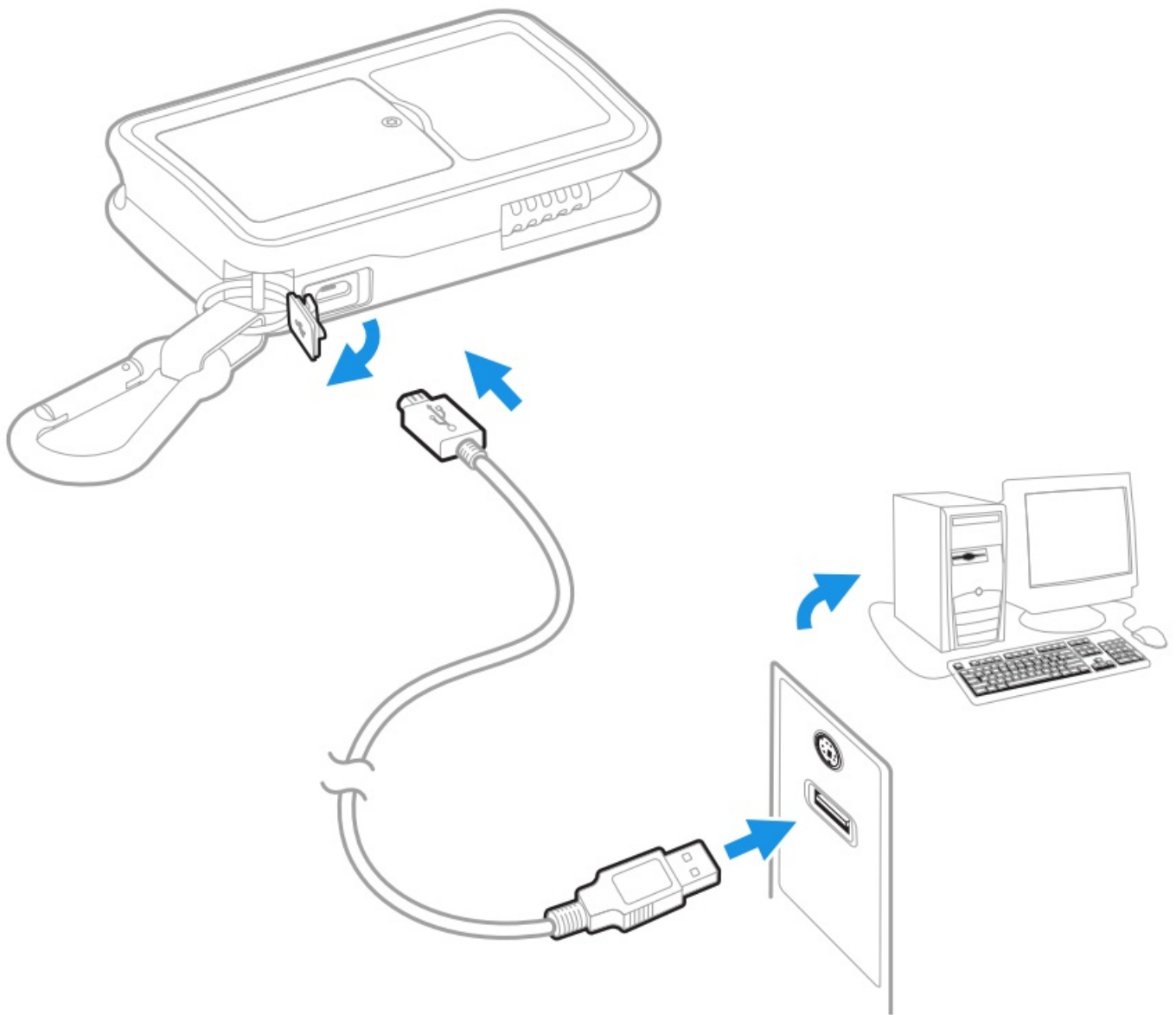
**Note:** The micro USB connector on the DEX-BLE-10 only supports charging the battery and cannot be used for data transfer.

### Option 1: Charging From a Power Outlet

Use only a UL Listed power supply that has been qualified by Honeywell with an output rated at 5VDC and 2A with the device.



## Option 2: Charging From a USB Port on a Host Device



**⚠ Ensure all components are dry prior to mating the DEX-BLE-10 and battery with peripheral devices. Mating wet components may cause damage not covered by the warranty.**

### Turn Power On/Off

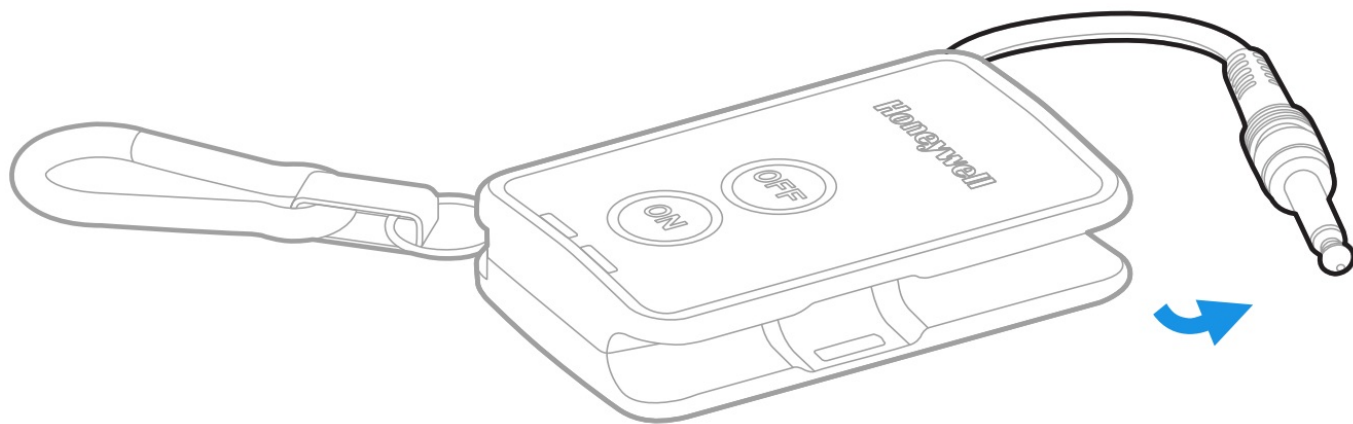
To turn the DEX-BLE-10 on, press the “ON” button.  
To turn the DEX-BLE-10 on, press the “OFF” button.

**Note:** The DEX-BLE-10 automatically powers OFF after 5-minutes of inactivity

### Connect the DEX-BLE-10

The DEX adapter easily connects to direct store delivery (DSD) DEX/UCS store systems and Vending Machines.

1. Turn ON the DEX-BLE-10.
2. Pull the connector out of the molded side cavity of the adapter.
3. Insert the connector into the receiving system



## Pair the DEX-BLE-10 with a Mobile Computer

The DEX Wireless Adapter supports Honeywell devices on Android 6 and higher.

To pair the DEX-BLE-10:

1. Verify the mobile computer is turned on and Bluetooth and NFC are enabled.
2. Turn ON the DEX-BLE-10.
3. Place the DEX-BLE-10 back to back with the mobile computer. The NFC antenna is on the back of the DEX wireless adapter. The mobile computer initiates the pairing process with the adapter.
4. Follow the on-screen prompts to establish a connection and transfer data.

## Bluetooth Communication Status

The blue LED indicates the communication between the DEX-BLE-10 and another device using Bluetooth™ technology

Blue LED Status	Bluetooth Communication Status
Solid	Not paired, but discoverable to other devices.
Fast Flash	Attempting connection with other device.
Slow Flash	Connection established with other device.
* LED is active until the adapter automatically powers down due to inactivity or is manually turned OFF.	

## Battery Status

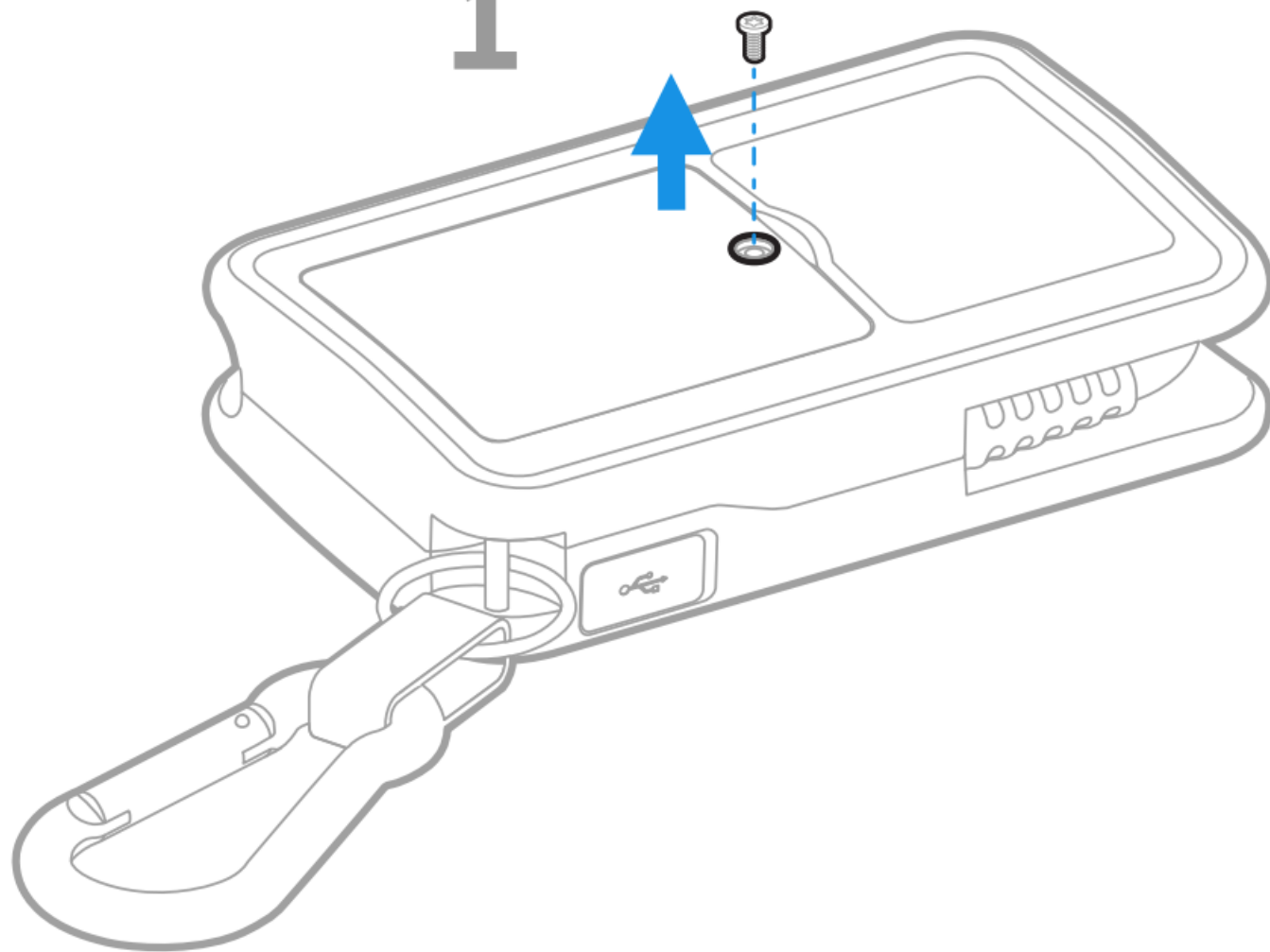
The green LED indicates the status of the battery charge.

**Note:** The LED behavior differs if the DEX-BLE-10 is connected to an external power source (e.g., power cable and wall charger) instead of using battery power.

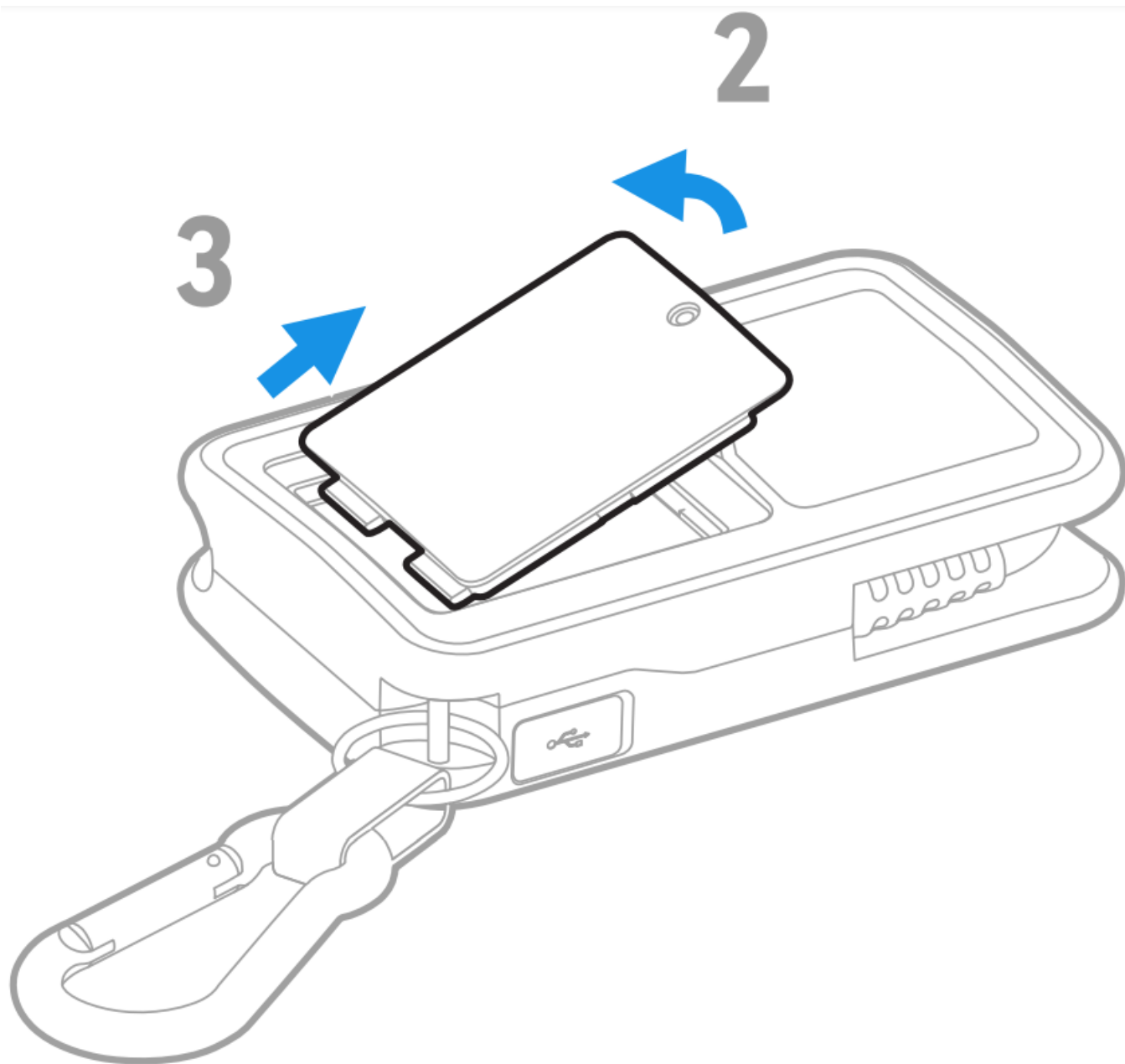
Power	LED Status	Description
External (Cable/ Power Source	Flash	Battery charging
External (Cable/ Power Source)	Solid	Battery fully charged
Battery	Flash 5-seconds On 5-seconds Of	Battery Low, Less than 20%
Battery	Off*	Battery Charge is between 20% and 80%.
Battery	Solid 5-seconds On 5-seconds Off*	Battery Fully Charged
* LED status after initial device power on sequence.		

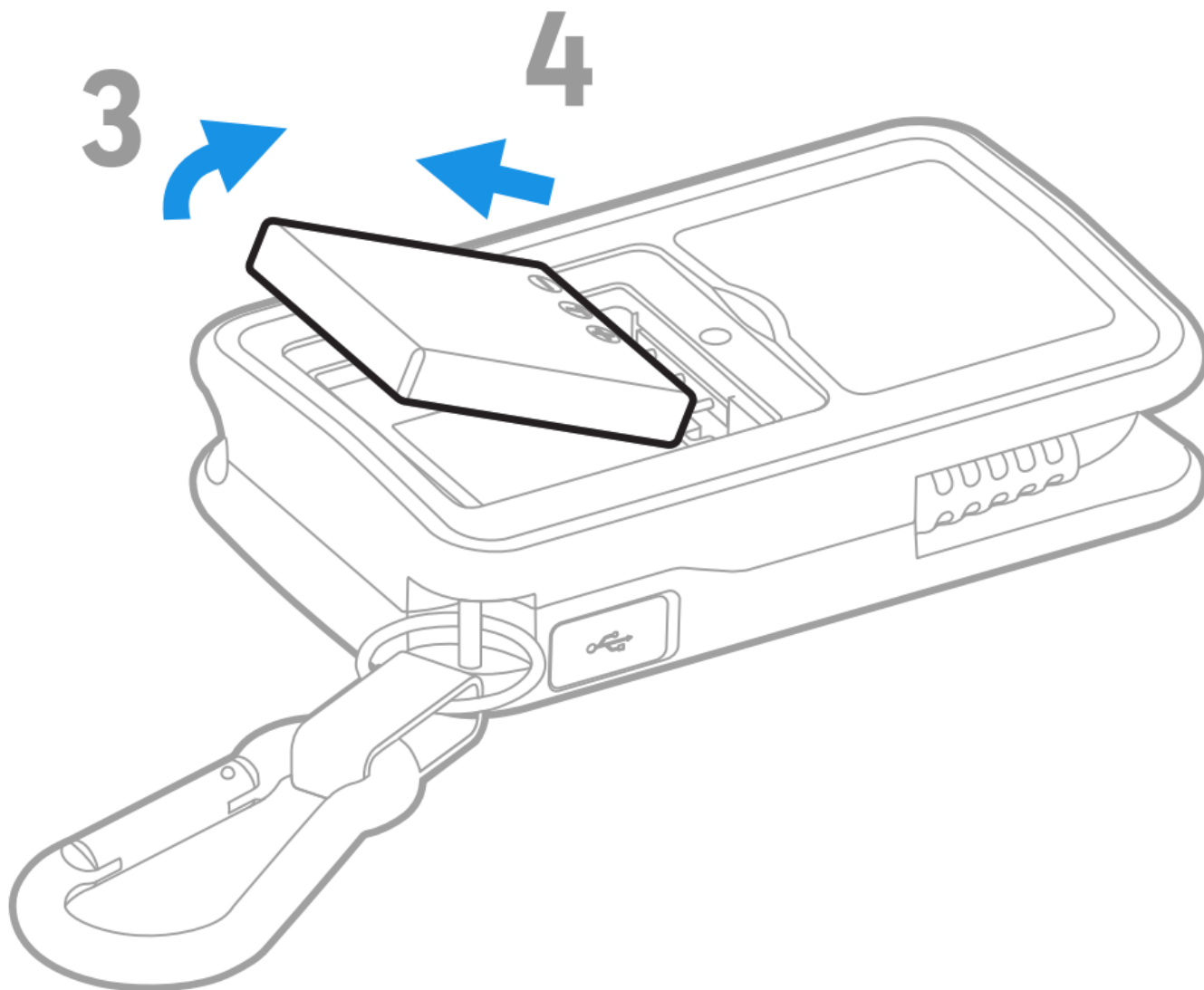
## Battery Removal

1









## Support

To search our knowledge base for a solution or log into the Technical Support Portal and report a problem, go to [www.hsmcontactsupport.com](http://www.hsmcontactsupport.com).

## Documentation

Product documentation is available at [www.honeywellaidc.com](http://www.honeywellaidc.com).

## Limited Warranty

For warranty information, go to [www.honeywellaidc.com](http://www.honeywellaidc.com) and click **Resources > Product Warranty**.

## Patents

For patent information, see [www.hsmpats.com](http://www.hsmpats.com).

## Trademarks

Torx® is a registered trademark of Acument Global Technologies

## Disclaimer

Honeywell International Inc. ("HII") reserves the right to make changes in specifications and other information contained in this document without prior notice, and the reader should in all cases consult HII to determine whether any such changes have been made. The information in this publication does not represent a commitment on the part of HII.

HII shall not be liable for technical or editorial errors or omissions contained herein; nor for incidental or consequential damages resulting from the furnishing, performance, or use of this material. HII disclaims all responsibility for the selection and use of software and/or hardware to achieve intended results.

This document contains proprietary information that is protected by copyright. All rights are reserved. No part of this document may be photocopied, reproduced, or translated into another language without the prior written consent of HII.

Copyright © 2020 Honeywell International Inc. All rights reserved.

### Agency Models: DEX-BLE-10

Publicly downloadable certificates are available at [www.honeywellaidc.com/compliance](http://www.honeywellaidc.com/compliance).

Product documentation is available at [www.honeywellaidc.com](http://www.honeywellaidc.com).



Caution: Any changes or modifications made to this equipment not expressly approved by Honeywell International Inc. may void the authorization to operate this equipment.

## FCC Statements

### Models: DEX-BLE-10

#### FCC Part 15 Subpart B Class B

This device complies with Part 15 of the FCC Rules. Operation is subject to the following two conditions:

1. This device may not cause harmful interference.
2. This device must accept any interference received, including interference that may cause undesired operation.

This equipment has been tested and found to comply with the limits for a Class B digital device pursuant to Part 15 of the FCC Rules. These limits are designed to provide reasonable protection against harmful interference in a residential installation. This equipment generates, uses, and can radiate radio frequency energy and, if not installed and used in accordance with the instructions, may cause harmful interference to radio communications. However, there is no guarantee that interference will not occur in a particular installation. If this equipment does cause harmful interference to radio or television reception, which can be determined by turning the equipment off and on, the user is encouraged to try to correct the interference by one or more of the following measures:

- Reorient or relocate the receiving antenna.
- Increase the separation between the equipment and receiver.
- Connect the equipment into an outlet on a circuit different from that to which the receiver is connected.
- Consult the dealer or an experienced radio or television technician for help.

If necessary, the user should consult the dealer or an experienced radio/television technician for additional suggestions. Honeywell International Inc. is not responsible for any radio or television interference caused by unauthorized modifications of this equipment or the substitution or attachment of connecting cables and equipment other than those specified by Honeywell International Inc. The correction is the responsibility of the user.

### **RF Exposure Warning**

This equipment complies with FCC RF exposure limits set forth for an uncontrolled environment. This device and its antenna(s) must not be co-located or operating in conjunction with any other antenna or transmitter.

Use only shielded data cables with this system. This unit has been tested with cables less than 3 meters. Cables greater than 3 meters may not meet class B performance.

### **Models: DEX-BLE-10 Canadian Compliance**


This device complies with Industry Canada license-exempt RSS standard(s). Operation is subject to the following two conditions:

1. This device may not cause harmful interference.
2. This device must accept any interference received, including interference that may cause undesired operation.

CAN ICES-3 (B) / NMB-3 (B)

### **Models: DEX-BLE-10 USA, Canada NRTL Safety**

UL and C-UL listed: UL 62368-1 2nd Edition, CAN/CSA-C22.2 No. 62368-1-14

 **CAUTION:** Improper battery replacement or incompatible device usage may result in risk of burns, fire, explosion, or other hazard. Dispose of batteries according to local regulations



### **Patents**


For patent information, refer to [www.hsmpats.com](http://www.hsmpats.com).

For warranty information, go to [www.honeywellaidc.com](http://www.honeywellaidc.com) and click Resources > Product Warranty.

This document was prepared and executed in the English language. In the event this document is translated into another language and a conflict arises between the English version and a non English version, the English version shall prevail, it being recognized and acknowledged that the English language version most clearly expresses the intent of the parties. Any notice or communication given in connection with this document must include a version in the English language.

Honeywell International Inc  
9680 Old Bailes Road  
Fort Mill, SC 29707 USA © 2020 Honeywell International Inc. All rights reserved.

Documents / Resources

	<p><a href="#">Honeywell DEX-BLE-10 DEX Bluetooth Wireless Adapter</a> [pdf] User Guide DEX-BLE-10, DEXBLE10, HD5-DEX-BLE-10, HD5DEXBLE10, DEX-BLE-10, DEX Bluetooth W ireless Adapter, Bluetooth Adapter, Wireless Adapter, DEX-BLE-10, Adapter</p>
---	--

References

- [H Safety and Productivity Solutions | Honeywell](#)
- [H Productivity Product Certifications](#)
- [H Safety and Productivity Solutions | Honeywell](#)
- [H Safety and Productivity Solutions | Honeywell](#)