

**Honeywell**

Honeywell CT37  
Series Mobile  
Computers



# Honeywell CT37 Series Mobile Computers User Guide

[Home](#) » [Honeywell](#) » Honeywell CT37 Series Mobile Computers User Guide 

## Contents

- [1 Honeywell CT37 Series Mobile Computers](#)
- [2 CHARGERS](#)
- [3 Healthcare chargers](#)
- [4 POWER SUPPLIES](#)
- [5 OTHER ACCESSORIES](#)
- [6 SD CARDS](#)
- [7 AC LINE CORDS](#)
- [8 Documents / Resources](#)
  - [8.1 References](#)
- [9 Related Posts](#)

# Honeywell

**Honeywell CT37 Series Mobile Computers**



## CHARGERS

### For non-booted terminals

- **CT37/CT30 XP non-booted charging base, standard**

Kit includes 4 bay charging base, power supply, must order power cord separately. For recharging up to 4 computers, compatible with CT37(w/standard and extended battery) and CT30 XP.

- **CT37/CT30 XP non-booted charging base, for US**

Kit includes 4 bay charging base, power supply, US power cord. For recharging up to 4 computers, compatible with CT37 (w/standard and extended battery) and CT30 XP.

- **CT37/CT30 XP non-booted charging base, for EU**

Kit includes 4 bay charging base, power supply, EU power cord. For recharging up to 4 computers, compatible with CT37 (w/standard and extended battery) and CT30 XP.



CT37-CB-UVN-0



CT37-CB-UVN-1



CT37-CB-UVN-2

- **CT37/CT30 XP non-booted charging base, for UK**

Kit includes 4 bay charging base, power supply, UK power cord. For recharging up to 4 computers, compatible with CT37 (w/standard and extended battery) and CT30 XP.

- **CT37/CT30 XP non-booted net base, standard Kit includes net base and power supply,**

must order power cord separately. For Ethernet comms and recharging up to 4 computers, compatible with CT37(w/standard and extended battery) and CT30 XP.

- **CT37/CT30 XP non-booted net base, for US**

Kit includes net base and power supply, US power cord. For Ethernet comms and recharging up to 4 computers, compatible with CT37(w/standard and extended battery) and CT30 XP



CT37-CB-UVN-3



CT37-NB-UVN-0



CT37-NB-UVN-1

- **CT37/CT30 XP non-booted net base, for EU**

Kit includes net base and power supply, EU power cord. For Ethernet comms and recharging up to 4 computers, compatible with CT37(w/standard and extended battery) and CT30 XP.

- **CT37/CT30 XP non-booted net base, for UK**

Kit includes net base and power supply, UK power cord. For Ethernet comms and recharging up to 4 computers, compatible with CT37(w/standard and extended battery) and CT30 XP.

- **CT37 non-booted home base, standard Kit includes home base, power supply, must**

order power cord Separately. For recharging one computer (CT37 with standard and extended battery or CT30 XP) and a spare battery (CT37 only). Support USB client via USB Type B connector. Can not recharge CT30 XP spare battery.



CT37-NB-UVN-2



CT37-NB-UVN-3



CT37-HB-UVN-0

- **CT37 non-booted home base, for US Kit includes home base, power supply, US power cord. For recharging one computer**

(CT37 with standard and extended battery or CT30 XP) and a spare battery (CT37 only). Support USB client via USB Type B connector. Can not recharge CT30 XP spare battery.

- **CT37 non-booted home base, for EU Kit includes home base, power supply, EU power cord. For recharging one computer**

(CT37 with standard and extended battery or CT30 XP) and a spare battery (CT37 only). Support USB client via USB Type B connector. Can not recharge CT30 XP spare battery.

- **CT37 non-booted home base, for UK**

Kit includes home base, power supply, UK power cord. For recharging one computer (CT37 with standard and extended battery or CT30 XP) and a spare battery (CT37 only). Support USB client via USB Type B connector. Can not recharge CT30 XP spare battery.



CT37-HB-UVN-1



CT37-HB-UVN-2



CT37-HB-UVN-3

- **CT37 non-booted ethernet base, standard**

Kit includes ethernet home base, power supply, must order power cord separately. For recharging one computer (CT37 with standard and extended battery or CT30 XP) and one spare battery (CT37 only). Includes Ethernet communications. Supports USB client via USB Type B connector. Can not recharge CT30 XP spare battery.

- **CT37 non-booted ethernet base, for US**

Kit includes ethernet home base, power supply, US power cord. For recharging one computer (CT37 with standard and extended battery or CT30 XP) and one spare battery (CT37 only). Includes Ethernet communications. Supports USB client via USB Type B connector. Can not recharge CT30 XP spare battery.

- **CT37 non-booted ethernet base, for EU**

Kit includes ethernet home base, power supply, EU power cord. For recharging one computer (CT37 with

standard and extended battery or CT30 XP) and one spare battery (CT37 only). Includes Ethernet communications. Supports USB client via USB Type B connector. Can not recharge CT30 XP spare battery.



CT37-EB-UVN-0



CT37-EB-UVN-1



CT37-EB-UVN-2

- **CT37 non-booted ethernet base, for UK**

Kit includes ethernet home base, power supply, UK power cord. For recharging one computer (CT37 with standard and extended battery or CT30 XP) and one spare battery (CT37 only). Includes Ethernet communications. Supports USB client via USB Type B connector. Can not recharge CT30 XP spare battery.

- **CT37/CT30 XP non-booted display base, standard**

Kit includes display base, power supply, must order power cord separately. For Charging one computer, connection with an external display, and extending I/O for HDMI, Ethernet comm and 3 USB ports, compatible with CT37(w/standard and extended battery) and CT30 XP.

- **CT37/CT30 XP non-booted display base, for US**

Kit includes display base, power supply, US power cord. For Charging one computer, connection with an external display, and extending I/O for HDMI, Ethernet comm and 3 USB ports, compatible with CT37(w/standard and extended battery) and CT30 XP.



CT37-EB-UVN-3



CT37-DB-UVN-0



CT37-DB-UVN-1

- **CT37/CT30 XP non-booted display base, for EU**

Kit includes display base, power supply, EU power cord. For Charging one computer, connection with an external display, and extending I/O for HDMI, Ethernet comm and 3 USB ports, compatible with CT37(w/standard and extended battery) and CT30 XP.

- **CT37/CT30 XP non-booted display base, for UK**

Kit includes display base, power supply, UK power cord. For Charging one computer, connection with an external display, and extending I/O for HDMI, Ethernet comm and 3 USB ports, compatible with CT37 (w/standard and extended battery) and CT30 XP.

- **CT37/CT30 XP 5-bay charging base, standard**

Kit includes 5-bay charging base, power supply, no power cord. Charge up to 4 pcs computers and 4 pcs batteries, compatible with CT37(w/standard and extended battery) and CT30 XP



CT37-DB-UVN-2



CT37-DB-UVN-3



CT37-5CB-UVN-BAT-0

- **CT37/CT30 XP 5-bay charging base, US power cord**

Kit includes 5-bay charging base, power supply, US power cord. Charge up to 4 pcs computers and 4 pcs

batteries, compatible with CT37 (w/standard and extended battery) and CT30 XP.

- **CT37/CT30 XP non-booted universal cup**

Kit includes a cup to be used for CT37(w/standard and extended battery) and CT30 XP. Charging docks, power supply and cables must be ordered separately.

- **CT37/CT30 XP non-booted charging base, standard**

Kit includes 5 bay charging base, power supply, must order power cord separately. For recharging up to 5 computers, compatible with CT37(w/standard and extended battery) and CT30 XP.



CT37-5CB-UVN-BAT-1



CT37-UCP-N



CT37-5CB-UVN-0

- **CT37/CT30 XP non-booted charging base, for US**

Kit includes 5 bay charging base, power supply, US power cord. For recharging up to 5 computers, compatible with CT37(w/standard and extended battery) and CT30 XP.

- **CT37/CT30 XP non-booted charging base, for EU**

Kit includes 5 bay charging base, power supply, EU power cord. For recharging up to 5 computers, compatible with CT37 (w/standard and extended battery) and CT30 XP.

- **CT37/CT30 XP non-booted charging base, for UK**

Kit includes 5 bay charging base, power supply, UK power cord. For recharging up to 5 computers, compatible with CT37 (w/standard and extended battery) and CT30 XP.



CT37-5CB-UVN-1



CT37-5CB-UVN-2



CT37-5CB-UVN-3

- **CT37/CT30 XP booted charging base, standard**

Kit includes 4 bay charger, power supply, must order power cord separately. For recharging up to 4 computers, compatible with CT30 XP and CT37 (w/standard and extended battery) with protective boot attached.

- **CT37/CT30 XP booted charging base, for US**

Kit includes 4 bay charger, power supply, US power cord. For recharging up to 4 computers, compatible with CT30 XP and CT37(w/standard and extended battery) with protective boot attached.

- **CT37/CT30 XP booted charging base, for EU**

Kit includes 4 bay charger, power supply, EU power cord. For recharging up to 4 computers, compatible with CT30 XP and CT37 (w/standard and extended battery) with protective boot attached.



CT30P-CB-UVB-0



CT30P-CB-UVB-1



CT30P-CB-UVB-2

- **CT37/CT30 XP booted charging base, for UK**

Kit includes 4 bay charger, power supply, UK power cord. For recharging up to 4 computers, compatible with CT30 XP and CT37 (w/standard and extended battery) with protective boot attached.

- CT37/CT30 XP booted net base, standard

Kit includes net base, power supply, must order power cord separately. For Ethernet communications and recharging up to 4 computers, compatible with CT30 XP and CT37(w/standard and extended battery) with protective boot attached.

- CT37/CT30 XP booted net base, for US

Kit includes net base, power supply, US power cord. For Ethernet communications and recharging up to 4 computers, compatible with CT30 XP and CT37(w/standard and extended battery) with protective boot attached.



CT30P-CB-UVB-3



CT30P-NB-UVB-0



CT30P-NB-UVB-1

- CT37/CT30 XP booted net base, for EU

Kit includes net base, power supply, EU power cord. For Ethernet communications and recharging up to 4 computers, compatible with CT30 XP and CT37(w/standard and extended battery) with protective boot attached

- CT37/CT30 XP booted net base, for UK

Kit includes net base, power supply, UK power cord. For Ethernet communications and recharging up to 4 computers, compatible with CT30 XP and CT37 (w/standard and extended battery) with protective boot attached.

- CT37 booted home base, standard

Kit includes home base, power supply, must order power cord separately. For recharging one computer, CT30 XP or CT37(w/standard and extended battery) with protective boot attached, and a spare battery (CT37 only). Support USB client via USB Type B connector. Can not recharge CT30 XP spare battery.



CT30P-NB-UVB-2



CT30P-NB-UVB-3



CT37-HB-UVB-0

- CT37 booted home base, for US

Kit includes home base, power supply, US power cord. For recharging one computer, CT30 XP or CT37(w/standard and extended battery) with protective boot attached, and a spare battery (CT37 only). Support USB client via USB Type B connector. Can not recharge CT30 XP spare battery.

- CT37 booted home base, for EU

Kit includes home base, power supply, EU power cord. For recharging one computer, CT30 XP or CT37(w/standard and extended battery) with protective boot attached, and a spare battery (CT37 only). Support USB client via USB Type B connector. Can not recharge CT30 XP spare battery.

- CT37 booted home base, for UK

Kit includes home base, power supply, UK power cord. For recharging one computer, CT30 XP or CT37(w/standard and extended battery) with protective boot attached, and a spare battery (CT37 only). Support USB client via USB Type B connector. Can not recharge CT30 XP spare battery.





CT37-HB-UVB-1



CT37-HB-UVB-2



CT37-HB-UVB-3

- CT37 booted ethernet base, standard  
Kit includes ethernet home base, power supply, must order power cord separately. For recharging one computer, CT30 XP or CT37(w/standard and extended battery) with protective boot attached, and a spare battery (CT37 only). Support USB client via USB Type B connector. Can not recharge CT30 XP spare battery.
- CT37 booted ethernet base, for US  
Kit includes ethernet home base, US power cord. For recharging one computer, CT30 XP or CT37 (w/standard and extended battery) with protective boot attached, and a spare battery (CT37 only). Support USB client via USB Type B connector. Can not recharge CT30 XP spare battery.
- CT37 booted ethernet base, for EU  
Kit includes ethernet home base, EU power cord. For recharging one computer, CT30 XP or CT37(w/standard and extended battery) with protective boot attached, and a spare battery (CT37 only). Support USB client via USB Type B connector. Can not recharge CT30 XP spare battery.



CT37-EB-UVB-0



CT37-EB-UVB-1



CT37-EB-UVB-2

- CT37 booted ethernet base, for UK  
Kit includes ethernet home base, UK power cord. For recharging one computer, CT30 XP or CT37(w/standard and extended battery) with protective boot attached, and a spare battery (CT37 only). Support USB client via USB Type B connector. Can not recharge CT30 XP spare battery.
- CT37/CT30 XP booted display base, standard  
Kit includes display base, power supply, must order power cord separately. For recharging one computer, CT30 XP or CT37(w/standard and extended battery) with protective boot attached, connection with an external display, extending I/O for HDMI, Ethernet comm and 3 USB ports.
- CT37/CT30 XP booted display base, for US  
Kit includes display base, power supply, US power cord. For recharging one computer, CT30 XP or CT37(w/standard and extended battery) with protective boot attached, connection with an external display, extending I/O for HDMI, Ethernet comm and 3 USB ports.



CT37-EB-UVB-3



CT30P-DB-UVB-0



CT30P-DB-UVB-1

- CT37/CT30 XP booted display base, for EU  
Kit includes display base, power supply, EU power cord. For recharging one computer, CT30 XP or CT37(w/standard and extended battery) with protective boot attached, connection with an external display,

extending I/O for HDMI, Ethernet comm and 3 USB ports.

- CT37/CT30 XP booted display base, for UK

Kit includes display base, power supply, UK power cord. For recharging one computer, CT30 XP or CT37(w/standard and extended battery) with protective boot attached, connection with an external display, extending I/O for HDMI, Ethernet comm and 3 USB ports.

- CT37/CT30 XP booted 5-bay charging base, standard

Kit includes 5-bay charging base, power supply, no power cord. Charge up to 4 pcs computers with protective boot and 4 pcs batteries, compatible with CT30 XP and CT37(w/standard and extended battery).



CT30P-DB-UVB-2



CT30P-DB-UVB-3



CT37-5CB-UVB-BAT-0

- CT37/CT30 XP booted 5-bay charging base, US

Kit includes 5-bay charging base, power supply, US power cord. Charge up to 4 pcs computers with protective boot and 4 pcs batteries, compatible with CT30 XP and CT37(w/standard and extended battery).

- CT37/CT30 XP universal cup

Kit includes a cup to be used for CT37 (w/standard and extended battery) and CT30 XP with protective boot. Charging docks, power supply and cables must be ordered separately.

- CT37/CT30 XP booted charging base, standard

Kit includes 5 bay charging base, power supply, must order power cord separately. For recharging up to 5 computers with protective boot, compatible with CT30 XP and CT37(w/standard and extended battery).



CT37-5CB-UVB-BAT-1



CT30P-UCP-B



CT30P-5CB-UVB-0

- CT37/CT30 XP booted charging base, for US

Kit includes 5 bay charging base, power supply, US power cord. For recharging up to 5 computers with protective boot, compatible with CT30 XP and CT37(w/standard and extended battery).

- CT37/CT30 XP booted charging base, for EU

Kit includes 5 bay charging base, power supply, EU power cord. For recharging up to 5 computers with protective boot, compatible with CT30 XP and CT37(w/standard and extended battery).

- CT37/CT30 XP booted charging base, for UK

Kit includes 5 bay charging base, power supply, UK power cord. For recharging up to 5 computers with protective boot, compatible with CT30 XP and CT37(w/standard and extended battery).



CT30P-5CB-UVB-1



CT30P-5CB-UVB-2



CT30P-5CB-UVB-3



## For batteries

- CT37/CT30 XP quad battery charger, Standard  
Kit includes quad battery charger, power supply, power cord must be ordered separately. For recharging up to four CT30 XP or CT37 both standard and extended batteries.
- CT37/CT30 XP quad battery charger, for US  
Kit includes quad battery charger, power supply, US power cord. For recharging up to four CT30 XP or CT37 both standard and extended batteries.
- CT37/CT30 XP quad battery charger, for EU  
Kit includes quad battery charger, power supply, EU power cord. For recharging up to four CT30 XP or CT37 both standard and extended batteries..



CT37-QBC-0



CT37-QBC-1



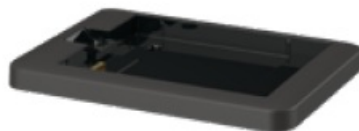
CT37-QBC-2

- CT37/CT30 XP quad battery charger, for UK  
Kit includes quad battery charger, power supply, UK power cord. For recharging up to four CT30 XP or CT37 both standard and extended batteries.



CT37-QBC-3

- CT37 Battery Cup for HomeBase/EthernetBase  
CT37 battery cup for HomeBase and EthernetBase, compatible with CT37 standard and extended battery. It also can be installed on CT30 XP HomeBase(CT30P-HB) and EthernetBase(CT30P-EB) to charge CT37 battery. Can not charge CT30 XP battery.



CT37-UCP-HBEB-BAT

## Healthcare chargers

- CT37/CT30 XP non-booted 5-bay charging base  
Kit includes 5-bay charging base and power supply. Must order power cord separately. Charge up to 4 pcs

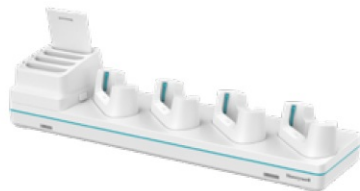
computers and 4 pcs batteries, compatible with CT30 XP and CT37 (w/standard and extended battery).

- CT37/CT30 XP booted 5-bay charging base

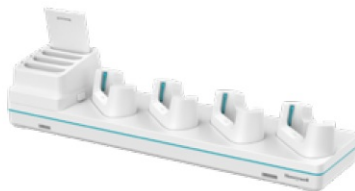
Kit includes 5-bay charging base and power supply. Must order power cord separately. Charge up to 4 pcs computers with protective boot and 4 pcs batteries, compatible with CT30 XP and CT37 (w/standard and extended battery).

- CT37/CT30 XP non-booted display base

Kit includes display base, power supply, must order power cord separately. For charging one computer, connection with an external display, and extending I/O for HDMI, Ethernet comm and 3 USB ports, compatible with CT30 XP and CT37 (w/standard and extended battery).



CT37-5CB-UVN-HC0



CT37-5CB-UVB-HC0



CT37-DB-UVN-HC0

- CT37/CT30 XP booted display base

Kit includes display base, power supply, must order power cord separately. For charging one computer with protective boot attached, connection with an external display, extending I/O for HDMI, Ethernet comm and 3 USB ports, compatible with CT30 XP and CT37 (w/standard and extended battery).

- CT37/CT30 XP quad battery charger

Kit includes healthcare quad battery charger and power supply. Must order power cord separately. For recharging up to four CT30 XP or CT37 both standard and extended batteries.

- CT37/CT30 XP non-booted universal cup

Kit includes a cup to be used for CT30 XP and CT37 (w/standard and extended battery). Charging docks, power supply and cables must be ordered separately.



CT30P-DB-UVB-HC0



CT37-QBC-HC0



CT37-UCP-NHC

- CT37/30 XP booted universal cup

Kit includes a cup to be used for CT30 XP and CT37(w/standard and extended battery) with protective boot. Charging docks, power supply and cables must be ordered separately.



CT30P-UCP-BHC

## POWER SUPPLIES

- Spare Battery Pack, Standard, DRH

CT37 disinfectant ready battery pack, 3846mAh, for use with CT37 disinfectant- ready configurations (last two digits in part number begin with D: CT37- xxx-xxxxxDx). 1 piece per pack.

- Spare Battery Pack, Standard, DRH

CT37 disinfectant ready battery pack, 3846mAh, for use with CT37 disinfectant- ready configurations (last two digits in part number begin with D: CT37- xxx-xxxxxDx). 2 pieces per pack.

- Spare Battery Pack, Extended, DRH

CT37 disinfectant ready battery pack, 5550mAh, for use with CT37 disinfectant- ready configurations (last two digits in part number begin with D: CT37- xxx-xxxxxDx). 1 piece per pack.



CT37-BTSC-001



CT37-BTSC-001-2PK



CT37-BTEC-001

- **Spare Battery Pack, Extended, DRH**

CT37 disinfectant ready battery pack, 5550mAh, for use with CT37 disinfectant- ready configurations (last two digits in part number begin with D: CT37-xxx-xxxxxDx). 2 pieces per pack.

- **Spare Battery Pack, Healthcare**

CT37 healthcare battery pack, 3846mAh, for use with CT37 healthcare and white color computer configurations (last two digits in part number begin with H and W: CT37-xxx-xxxxxHx and CT37-xxx-xxxxxWx). 1 piece per pack.

- **Spare Battery Pack, Healthcare**

CT37 healthcare battery pack, 3846mAh, for use with CT37 healthcare and white color computer configurations (last two digits in part number begin with H and W: CT37-xxx-xxxxxHx and CT37-xxx-xxxxxWx). 2 pieces per pack.



CT37-BTEC-001-2PK



CT37-BTSC-002



CT37-BTSC-002-2PK

- **Quad Base Power Supply**

An 84 W power supply for use with four-bay charging base and four-bay net base. Requires country-specific line cord to be ordered separately.

- **Desktop Power Supply**

A 36 W power supply for use with Ethernet home base, charge-only home base, and quad battery charger. Requires country- specific line cord to be ordered separately.

- **Desktop Power Supply**

KIT, 5V/2A Power supply, Scanpal EDA50K/51/60/61K/70/71/52/5S. Mobility Edge CT40/CT60. Includes 5 PLUGS PACKED US, UK, AU, EU, IN adapters.



50121667-001



50121666-001



50136024-001

- **CT37 Scan Handle, non-booted**

CT37 scan handle, compatible with CT37(w/standard and extended battery) without protective boot; compatible with non-booted chargers.

Not compatible with healthcare model (CT37-xxx- xxxxxHx).

- **CT37 Scan Handle, booted**

CT37 scan handle compatible with CT37 (w/standard and extended battery) with protective boot; compatible with booted chargers. Not compatible with healthcare model (CT37-xxx- xxxxxHx).



CT37-SH-UVN



CT37-SH-UVB

## OTHER ACCESSORIES

- **CT37 Hand Strap,**

Black CT37 hand strap, 3pcs

- **CT37 Hand Strap, Grey**

CT37 hand strap, 3pcs, healthcare

- **CT37 Protective Boot, Standard, Black**

CT37 protective boot. It is compatible with booted universal docks (CT30P-xx-UVB, CT37- xx-UVB).

Recommended for CT37-xxx-xxxxxDx. Can not use on CT30 XP mobile computer



CT37-HS-3PK



CT37-HS-HC-3PK



CT37-PB-STD

- **CT37 Protective Boot, Grey**

CT37 protective boot, grey. It is compatible with booted universal docks (CT30P-xx-UVB, CT37- xx-UVB).

Recommended for CT37-xxx-xxxxxWx and CT37-xxx-xxxxxHx (not disinfectant ready). Can not use on CT30 XP mobile computer

- **CT37 Carrying Clip, Black**

CT37 carrying clip. Snaps on top of CT37 terminal of WLAN configuration (CT37-X0N-xxxxxDx) 1 piece is included in the kit

- **CT37 Carrying Clip, white, Healthcare**

CT37 healthcare carrying clip. Snaps on top of CT37 terminal of WLAN configurations (CT37- X0N-xxxxxHx and CT37-X0N-xxxxxWx). 1 piece is included in the kit.



CT37-PB-GRY



CT37-CLIP-LAN-STD



CT37-CLIP-LAN-HC

- **CT37 Wearable Kit**

CT37 wearable Kit.

Not compatible with CT37 protective boot. Not compatible with CT30 XP.

- **CT37 Wearable Kit**

Spare Armband CT37 wearable kit, spare armband. 3 pieces per pack.

- **CT37 Wearable Kit, Spare Rubber**

Pad CT37 wearable kit, spare rubber pad. 2 pieces per pack



CT37-WS-KIT



CT37-WS-KIT-01



CT37-WS-KIT-02

- **CT37 Wearable Kit**

Spare Sled CT37 wearable kit, spare sled. 2 pieces per pack.

- **CT37 USB-C Plug, Healthcare CT37 USB-C Plug.**

Recommended for CT37-xxx-xxxxxHx 5 pieces per pack.

- **IH45 bracket for CT37, Non-booted**

IH45 bracket for non-booted CT37 (w/standard and extended battery).

Not compatible with protective boot. 4 screws are shipped with bracket as a kit.



CT37-WS-KIT-03



CT37-USBC-PLUG-5PK



IH45-BK-37S

- **Mobility USBC Headset**

Mobility headset with PTT, USB-C interface

- **CT37 Screen Protector**

CT37 screen protector, 1 piece per pack. Can be used with stylus.





MBL-HDST-USBC



CT37-SP-1PK

## SD CARDS

- **Industrial-Grade Micro-SD Card\***

Micro-SD card, 1 GB, AF1GUDI, RoHS

- **Industrial-Grade Micro-SD Card\***

Micro-SD card, 2 GB, AF1GUDI, RoHS

- **Industrial-Grade Micro-SD Card\***

Micro-SD card, 4 GB, AF1GUDI, RoHS

- **Industrial-Grade Micro-SD Card\***

Micro-SD card, 8 GB, AF1GUDI, RoHS

\* Micro-SD cards are required when databases are stored on the device. The database should be stored on the SD card.

## AC LINE CORDS

50127245-001

**Power Cord – India**

Power cord, India, 1.5 m (4.9 ft)

50117501-001

**Power Cord – Australia**

Power cord, Australia, 2.5 m (8.2 ft)

50117503-001

**Power Cord – CB**

Power cord, Argentina, Isled CB

77900506E

**Power Cord – US**

Power cord, U.S., IEC320-C13, 1.85 m (6.07 ft)

77900507E

**Power Cord – UK**

Power cord, UK, IEC320-C13, 2.5 m (8.2 ft)

77900508E

**Power Cord – EU**

Power cord, Europe, IEC320-C13, 2.5 m (8.2 ft)

19-19807

**Power Cord – China**

Cable, China cord set (CCC), 2.5 m (8.2 ft)

130063

**Power Cord – US**

Cable, power cord/IEC, U.S., 2.5 m (8.2 ft)

### For more information


[automation.honeywell.com](http://automation.honeywell.com)

### Honeywell Industrial Automation

855 S Mint Street, Charlotte, NC 28202 [800-582-4263](tel:800-582-4263)

[www.honeywell.com](http://www.honeywell.com)

Documents / Resources

	<p><a href="#">Honeywell CT37 Series Mobile Computers</a> [pdf] User Guide</p> <p>CT37-CB-UVN-0, CT37-CB-UVN-1, CT37-CB-UVN-2, CT37-CB-UVN-3, CT37-NB-UVN-0, CT37-NB-UVN-1, CT37-NB-UVN-2, CT37-NB-UVN-3, CT37 Series Mobile Computers, Mobile Computers, Computers</p>
---	---

References

- [User Manual](#)

[Manuals+](#), [Privacy Policy](#)

This website is an independent publication and is neither affiliated with nor endorsed by any of the trademark owners. The "Bluetooth®" word mark and logos are registered trademarks owned by Bluetooth SIG, Inc. The "Wi-Fi®" word mark and logos are registered trademarks owned by the Wi-Fi Alliance. Any use of these marks on this website does not imply any affiliation with or endorsement.