

Honeywell
Honeywell
CT37
Series
Handheld
Computer



Honeywell CT37 Series Handheld Computer User Guide

[Home](#) » [Honeywell](#) » Honeywell CT37 Series Handheld Computer User Guide 

Contents

- 1 [Honeywell CT37 Series Handheld Computer](#)
- 2 [Product Information](#)
- 3 [Memory Card Specifications](#)
- 4 [Computer Features](#)
- 5 [Installation](#)
- 6 [Charging](#)
- 7 [Connector](#)
- 8 [Function Buttons](#)
- 9 [Sync Data](#)
- 10 [Limited Warranty](#)
- 11 [Frequently Asked Questions \(FAQ\)](#)
- 12 [Documents / Resources](#)
 - 12.1 [References](#)
- 13 [Related Posts](#)

Honeywell

Honeywell CT37 Series Handheld Computer



Product Information

Specifications

- Model: CT37 Series
- Operating System: Android™
- Memory Card Compatibility: Single Level Cell (SLC) industrial grade microSD™, microSDH™, or microSDXC™
- Battery: 3.87 VDC, 17.11 watt-hour Li-ion battery
- Connectivity: USB Type C Connector, NFC, Bluetooth Low Energy Beacon

Agency Models

CT37 Series: CT37X0N, CT37X1N

Note: Due to variations in model configurations, your computer may appear different than illustrated.

Out of the Box

Make sure that your shipping box contains these items:

- CT37 mobile computer
- Rechargeable Li-ion battery
- Hand strap (model dependent)
- Cover for USB Type-C connector (model dependent)
- Product documentation

If you ordered accessories for your mobile computer, verify that they are also included with the order. Be sure to

keep the original packaging in case you need to return the mobile computer for service.

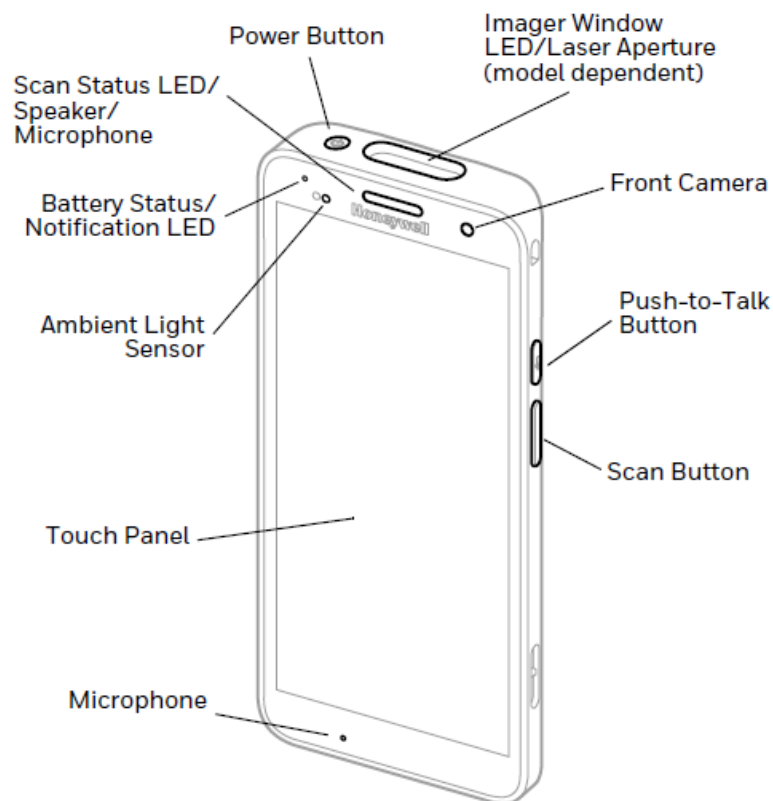
Note: CT37X0N models do not include a WWAN radio.

Memory Card Specifications

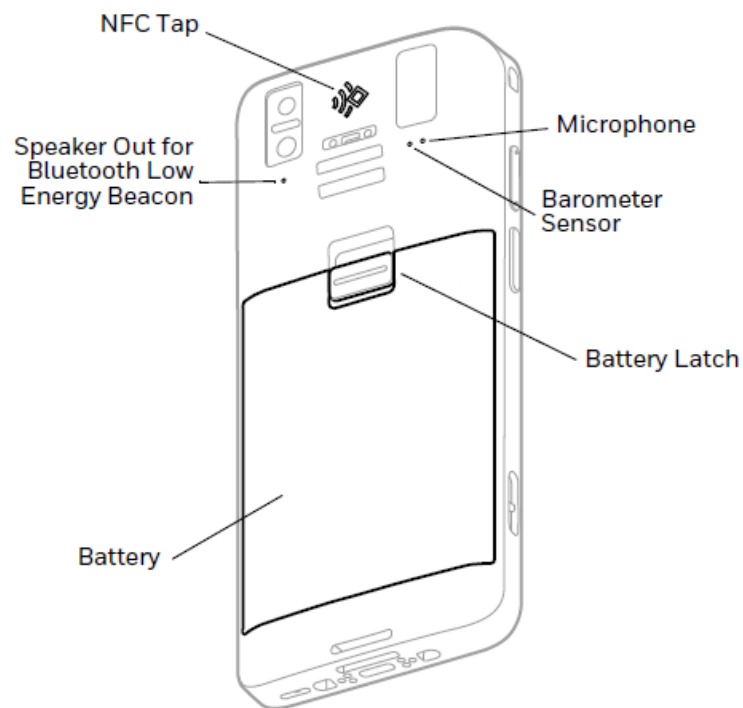
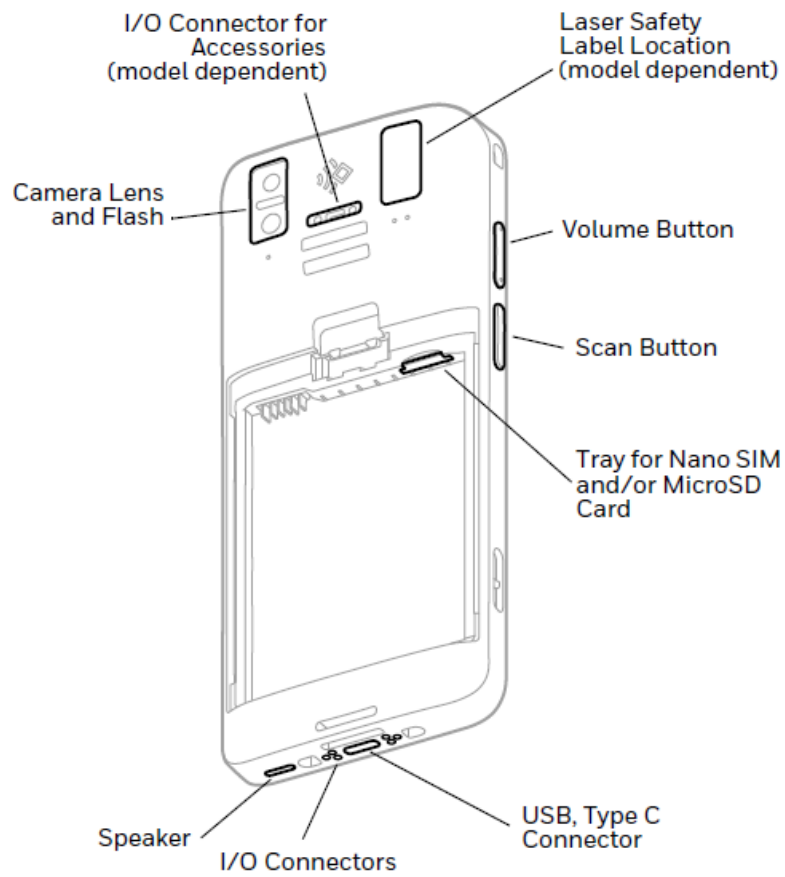
Honeywell recommends the use of Single Level Cell (SLC) industrial grade microSD™, microSDHC™ or microSDXC™ memory cards with mobile computers for maximum performance and durability. Contact a Honeywell sales representative for additional information on qualified memory card options.

Computer Features

Note: Due to variations in model configurations, your computer may appear different than illustrated.



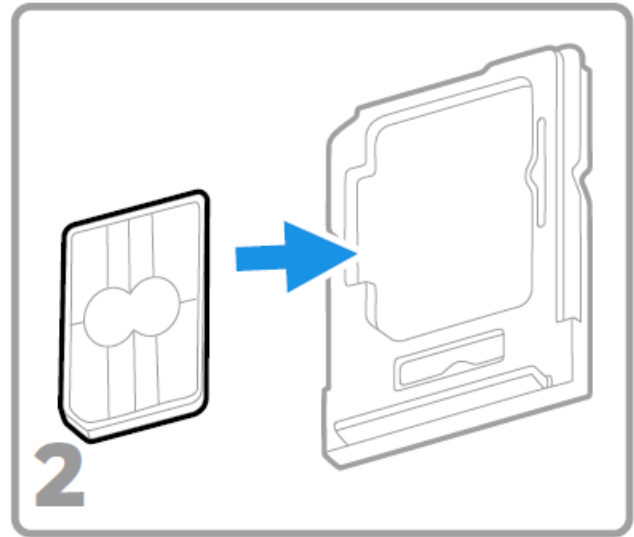
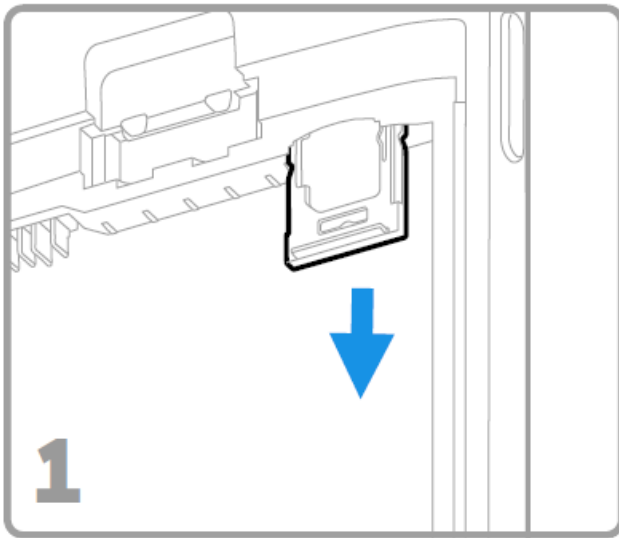
Note: Hand strap not shown.



Installation

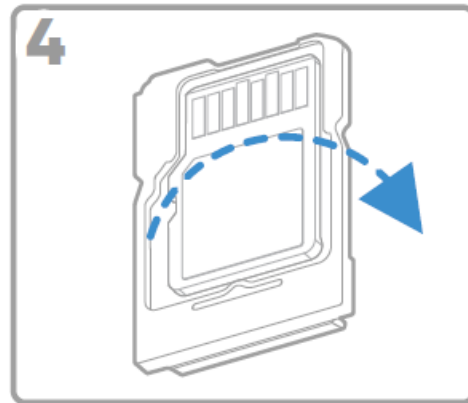
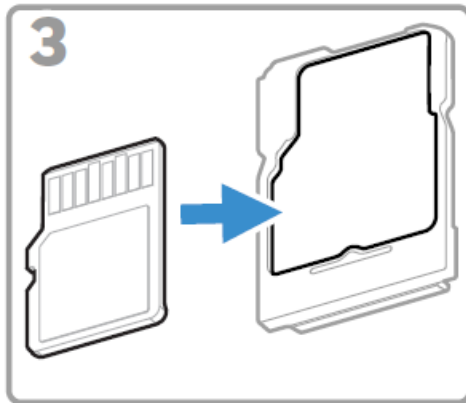
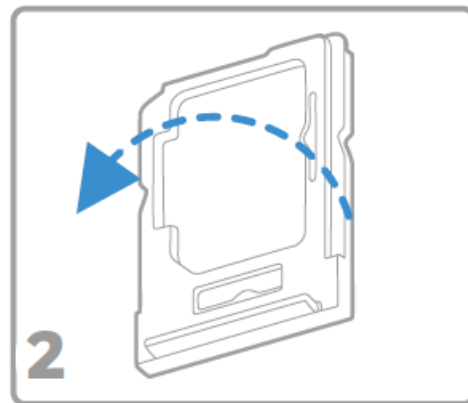
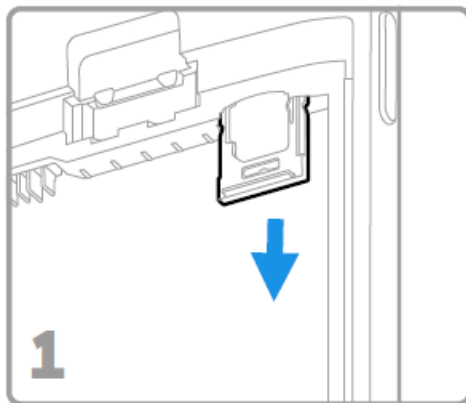
Install a Nano SIM Card (WWAN Models)

Either a nano-SIM card or embedded SIM (eSIM) is used to activate the phone and connect to a mobile network. Refer to the user guide for additional information.



Install a microSD Card (Optional)

Note: Format the microSD card before initial use.



Note: Always power off the computer before attempting to install or remove a card.

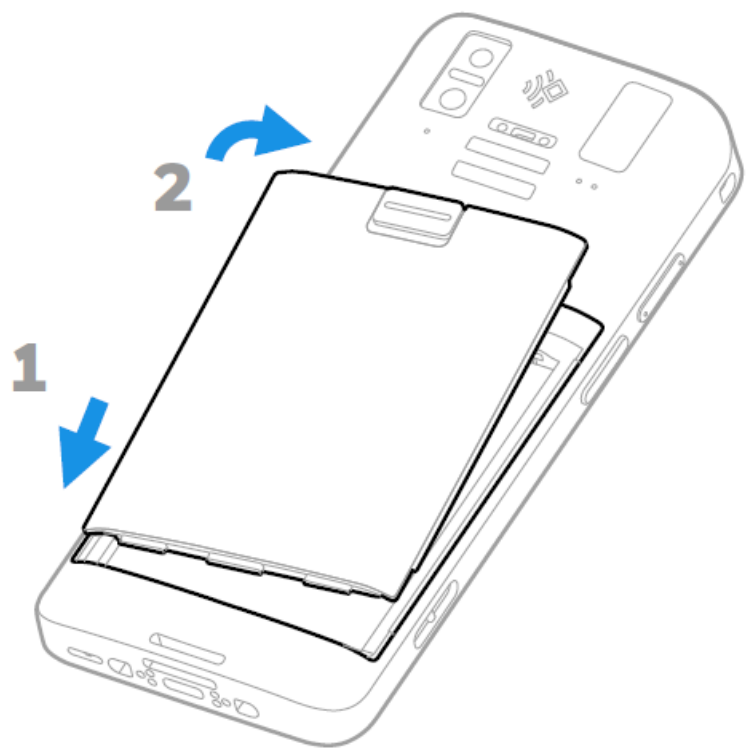
About the Battery

The mobile computer ships with a 3.87 VDC, 17.11 watt-hour Li-ion battery manufactured for Honeywell International Inc.

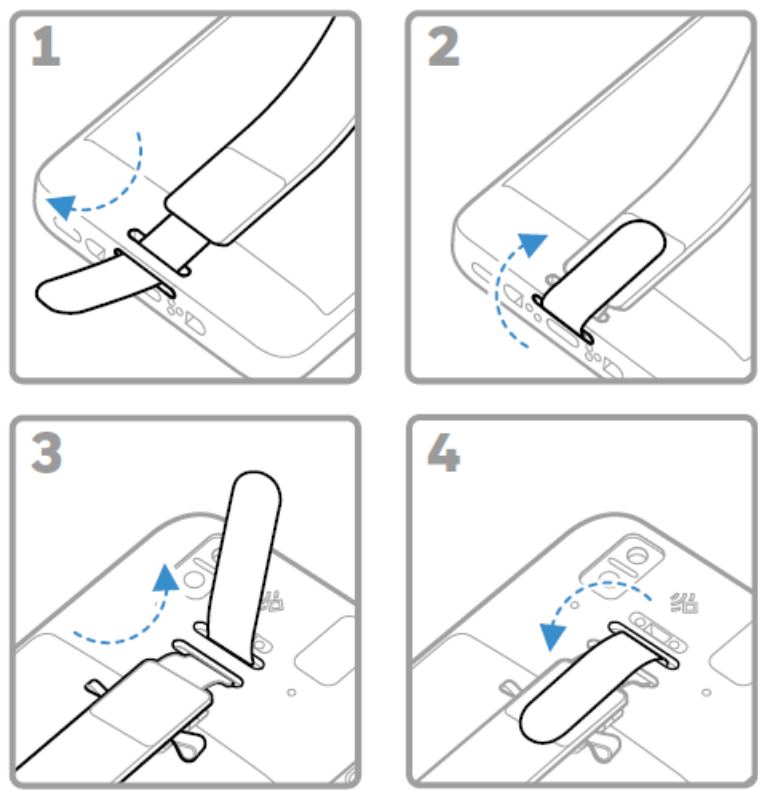
- Before you attempt to use, charge or replace the battery in the device, carefully read all labels, markings and product documentation provided in the box or online at sps.honeywell.com. To learn more about Battery Maintenance for Portable Devices, go to honeywell.com/PSS-Battery Maintenance.
- We recommend use of Honeywell Li-ion battery packs. Use of any non-Honeywell battery may result in damage not covered by the warranty.

- Ensure all components are dry prior to placing the battery in the computer. Mating wet components may cause damage not covered by the warranty.

Install Battery



Install the Hand Strap (model dependent)



Charging

Charge the Mobile Computer

The mobile computer ships with a partially charged battery. Charge the battery with a CT37 charging device for a minimum of 3 hours.

Note: Using the computer while charging the battery increases the time required to reach a full charge. If the mobile computer is drawing more current than supplied by the charging source, charging will not take place.

- We recommend the use of Honeywell accessories and power adapters. Use of any non-Honeywell accessories or power adapters may cause damage not covered by the warranty.
- CT37 series mobile computers are designed for use with CT37 charging accessories. For more information, see the CT37 Accessory Guide available for download at sps.honeywell.com.
- Ensure all components are dry prior to mating the computers and batteries with peripheral devices. Mating wet components may cause damage not covered by the warranty.

Connector

About the USB Type C Connector

You can use a USB cable to charge the mobile computer from a host device (e.g., laptop or desktop computer). The connected host device must supply a minimum power output of 5V, 0.5A to the CT37 or the battery will not charge.

Turn Power On/Off

The first time you power on the computer, a Welcome screen appears. You can either scan a configuration barcode or use the Wizard to manually set up the computer. Once setup is complete, the Welcome screen no longer appears on startup and Provisioning mode is automatically turned off (disabled).

To turn the computer on:

Press and hold the Power button for approximately 3 seconds and then release.

To turn the computer off:

1. Press and hold the Power button until the options menu appears.
2. Touch Power Off.

Battery Replacement

Hot Swap

You can replace the battery on demand provided the following conditions are met:

- The computer is not powering On or Off.
- The computer is not engaged in a phone call.
- A charged battery is inserted within 60 seconds.

Screen Timeout

The screen timeout (sleep mode) automatically turns the touch panel display off and locks the computer to save battery power when the computer is inactive for a programmed period of time.

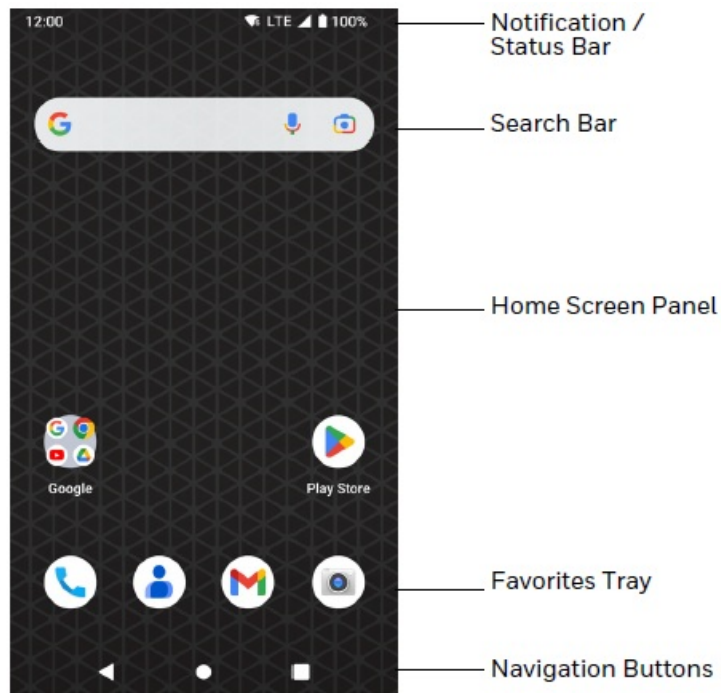
Press and release the Power button to wake the computer.

Adjust the Screen Timeout

To adjust the amount of time before the display sleeps after inactivity:

1. Swipe up on the touch screen.
2. Select Settings > Display > Screen Timeout.
3. Select the amount of time before the display goes to sleep.








About the Home Screen



Function Buttons

Navigation and Function Buttons

For button locations, see Computer Features on page 2.

Button	Description	
	Back	Return to the previous screen.
	Home	Return to the Home screen.
	Recent Apps	View and switch between recently used apps.
	Volume	Press the top of the button to raise the speaker volume. Press the bottom of the button to lower the speaker volume.
	Scan	Press left or right Scan button to trigger the scanner.
	Push-to-Talk	Push-to-Talk button for use with apps that support the feature for voice over IP (VoIP) calls over Wi-Fi or cellular data network connections.
	Power	<ul style="list-style-type: none"> • Turn Power On/Off • Enter/Exit Screen Timeout (sleep). • Access options menu, including: Power off, Restart, and Screen Timeout.

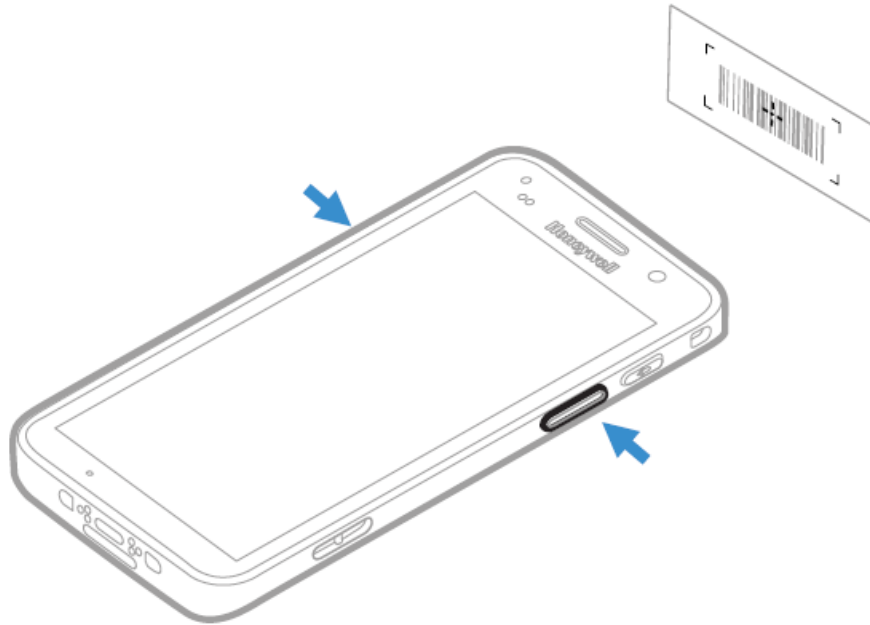
About Provisioning Mode (model dependent)

After completing the out-of-box set up process, Provisioning mode is automatically turned off. Scanning a barcode to install applications, certificates, configuration files, and licenses on the computer is restricted unless you enable Provisioning mode in the Settings app. To learn more, see the user guide.

Scan a Barcode with the Scan Demo

For optimum performance, avoid reflections by scanning the barcode at a slight angle.

1. Swipe up on the screen.
2. Select Demos > Scan Demo.
3. Point the computer at the barcode.
4. Touch Scan on the screen or press and hold any Scan button. Center the aiming beam over the barcode.



The decode results appear on the screen.

Note: In the Scan Demo app, not all barcode Symbolologies are enabled by default. If a barcode does not scan, the correct Symbolology may not be enabled. To learn how to modify the default app settings, see the user guide.

Sync Data

To move files between your CT37 and a computer:

1. Connect the CT37 to your computer using a USB charge/communication accessory.
2. On the CT37, swipe down from the top of the screen to see the notifications panel.
3. Touch the Android System notification twice to open the options menu.
4. Select either File Transfer or PTP.
5. Open the file browser on your computer.
6. Browse to the CT37. You can now copy, delete, and move files or folders between your computer and CT37 as you would with any other storage drive (e.g., cut and paste or drag and drop).

Note: When Provisioning mode is turned off, some folders are hidden from view in the file browser.

Restart the Mobile Computer

You may need to restart the mobile computer to correct conditions where an application stops responding to the system or the computer seems to be locked up.

1. Press and hold the Power button until the options menu appears.
2. Select Restart.

To restart the computer if the touch panel display is unresponsive:

Press and hold the Power button for approximately 8 seconds until the computer restarts.

Note: To learn about advanced reset options, see the user guide.

Support

To search our knowledge base for a solution or log into the Technical Support Portal and report a problem, go to honeywell.com/PSTechnicalsupport.

Documentation

Product documentation is available at sps.honeywell.com.

Limited Warranty

For warranty information, go to sps.honeywell.com and click Support > Productivity > Warranties.

Patents

For patent information, see www.hsmpats.com.

Trademarks

Android is a trademark of Google LLC.

Other product names or marks mentioned in this document may be trademarks or registered trademarks of other companies and are property of their respective owners.

Disclaimer

Honeywell International Inc. ("HII") reserves the right to make changes in specifications and other information contained in this document without prior notice, and the reader should in all cases consult HII to determine whether any such changes have been made. HII makes no representation or warranties regarding the information provided in this publication.

HII shall not be liable for technical or editorial errors or omissions contained herein; nor for incidental or consequential damages resulting from the furnishing, performance, or use of this material. HII disclaims all responsibility for the selection and use of software and/or hardware to achieve intended results.

This document contains proprietary information that is protected by copyright. All rights are reserved. No part of this document may be photocopied, reproduced, or translated into another language without the prior written consent of HII.


Copyright © 2024 Honeywell Group of Companies.

All rights reserved.

Frequently Asked Questions (FAQ)

- **Q: Can I use non-Honeywell accessories for charging?**
 - A: We recommend using Honeywell accessories and power adapters to prevent damage not covered by the warranty.
- **Q: What is the recommended power output for charging via USB?**
 - A: The connected host device must supply a minimum power output of 5V, 0.5A to ensure proper charging of the CT37 or its battery.

Documents / Resources

	<p>Honeywell CT37 Series Handheld Computer [pdf] User Guide HD5-CT37X0N, HD5CT37X0N, ct37x0n, CT37 Series Handheld Computer, CT37 Series, Handheld Computer, Computer</p>
---	---

References

- [H Honeywell SPS Community](#)
- [H Productivity products and associated patents | Honeywell](#)
- [User Manual](#)

[Manuals+](#), [Privacy Policy](#)

This website is an independent publication and is neither affiliated with nor endorsed by any of the trademark owners. The "Bluetooth®" word mark and logos are registered trademarks owned by Bluetooth SIG, Inc. The "Wi-Fi®" word mark and logos are registered trademarks owned by the Wi-Fi Alliance. Any use of these marks on this website does not imply any affiliation with or endorsement.