

Honeywell
Honeywell
CT37 HC
Mobile
Computer



Honeywell CT37 HC Mobile Computer Installation Guide

[Home](#) » [Honeywell](#) » Honeywell CT37 HC Mobile Computer Installation Guide 

Contents

- [1 Honeywell CT37 HC Mobile Computer](#)
- [2 Product Usage Instructions](#)
- [3 CHARGERS](#)
- [4 POWER SUPPLIES](#)
- [5 OTHER ACCESSORIES](#)
- [6 SD CARDS](#)
- [7 AC LINE CORDS](#)
- [8 Documents / Resources](#)
 - [8.1 References](#)
- [9 Related Posts](#)

Honeywell

Honeywell CT37 HC Mobile Computer



Product Specifications

- Brand: Honeywell
- Model: CT37 / CT37 HC
- Compatibility: CT37 (with standard and extended battery) and CT30 XP

Product Usage Instructions

• **Chargers for Non-Booted Terminals:**

The chargers provided are designed for recharging the mobile computers. Choose the appropriate charger based on your region (US, EU, UK).

• CT37-CB-UVN-0

Standard charging base for non-booted terminals. Includes a 4 bay charging base and power supply. Power cord needs to be ordered separately.

• CT37-NB-UVN-0

Net base for non-booted terminals. Includes net base and power supply. Suitable for Ethernet communications and recharging up to 4 computers.

• CT37-HB-UVN-0

Home base for non-booted terminals. Includes home base and power supply. Supports recharging one computer and a spare battery. USB client supported via USB Type B connector.

Frequently Asked Questions (FAQ)

1. **Are the chargers compatible with both CT37 and CT30 XP?**

Yes, the chargers mentioned in the guide are compatible with both CT37 (with standard and extended battery) and CT30 XP.

2. Can the home base recharge a spare battery for CT30 XP?

No, the home base can only recharge a spare battery for CT37, not for CT30 XP.

CT37 / CT37 HC MOBILE COMPUTER ACCESSORIES GUIDE

CHARGERS

For non-booted terminals

- **CT37/CT30 XP non-booted**

charging base, standard

Kit includes 4 bay charging base, power supply, must order power cord separately. For recharging up to 4 computers, compatible with CT37(w/standard and extended battery) and CT30 XP.

- **CT37/CT30 XP non-booted**

charging base, for US

Kit includes 4 bay charging base, power supply, US power cord. For recharging up to 4 computers, compatible with CT37 (w/standard and extended battery) and CT30 XP.



CT37-CB-UVN-0



CT37-CB-UVN-1



CT37-CB-UVN-2



- CT37-NB-UVN-2

- **CT37/CT30 XP non-booted net base, for EU**

Kit includes net base and power supply, EU power cord. For Ethernet comms and recharging up to 4 computers, compatible with CT37(w/standard and extended battery) and CT30 XP.

- CT37-NB-UVN-3

- **CT37/CT30 XP non-booted net base, for UK**

Kit includes net base and power supply, UK power cord. For Ethernet comms and recharging up to 4 computers, compatible with CT37(w/standard and extended battery) and CT30 XP.

- CT37-HB-UVN-0

- **CT37 non-booted home base, standard**

Kit includes home base, power supply, must

order power cord Separately. For recharging one computer (CT37 with standard and extended battery or CT30

XP) and a spare battery (CT37 only). Support USB client via USB Type B connector. Can not recharge CT30 XP spare battery.

•



- **CT37 non-booted home base, for US**

Kit includes home base, power supply, US power cord. For recharging one computer (CT37 with standard and extended battery or CT30 XP) and a spare battery (CT37 only). Support USB client via USB Type B connector. Can not recharge CT30 XP spare battery.

- **CT37 non-booted home base, for EU**

Kit includes home base, power supply, EU power cord. For recharging one computer (CT37 with standard and extended battery or CT30 XP) and a spare battery (CT37 only). Support USB client via USB Type B connector. Can not recharge CT30 XP spare battery.

- **CT37 non-booted home base, for UK**

Kit includes home base, power supply, UK power cord. For recharging one computer (CT37 with standard and extended battery or CT30 XP) and a spare battery (CT37 only). Support USB client via USB Type B connector. Can not recharge CT30 XP spare battery.



CT37-HB-UVN-1

CT37-HB-UVN-2

CT37-HB-UVN-3



- CT37-EB-UVN-0

- **CT37 non-booted ethernet base, standard**

Kit includes ethernet home base, power supply, must order power cord separately. For recharging one computer (CT37 with standard and extended battery or CT30 XP) and one spare battery (CT37 only). Includes Ethernet communications. Supports USB client via USB Type B connector. Can not recharge CT30 XP spare battery.

- CT37-EB-UVN-1

- **CT37 non-booted ethernet base, for US**

Kit includes ethernet home base, power supply, US power cord. For recharging one computer (CT37 with

standard and extended battery or CT30 XP) and one spare battery (CT37 only). Includes Ethernet communications. Supports USB client via USB Type B connector. Can not recharge CT30 XP spare battery.

- CT37-EB-UVN-2

- **CT37 non-booted ethernet base, for EU**

Kit includes ethernet home base, power supply, EU power cord. For recharging one computer (CT37 with standard and extended battery or CT30 XP) and one spare battery (CT37 only). Includes Ethernet communications. Supports USB client via USB Type B connector. Can not recharge CT30 XP spare battery.



- CT37-EB-UVN-3

- **CT37 non-booted ethernet base, for UK**

Kit includes ethernet home base, power supply, UK power cord. For recharging one computer (CT37 with standard and extended battery or CT30 XP) and one spare battery (CT37 only). Includes Ethernet communications. Supports USB client via USB Type B connector. Can not recharge CT30 XP spare battery.

CT37-DB-UVN-0

- **CT37/CT30 XP non-booted display base, standard**

Kit includes display base, power supply, must order power cord separately. For Charging one computer, connection with an external display, and extending I/O for HDMI, Ethernet comm and 3 USB ports, compatible with CT37(w/standard and extended battery) and CT30 XP.

- CT37-DB-UVN-1

- **CT37/CT30 XP non-booted display base, for US**

Kit includes display base, power supply, US power cord. For Charging one computer, connection with an external display, and extending I/O for HDMI, Ethernet comm and 3 USB ports, compatible with CT37(w/standard and extended battery) and CT30 XP.

For non-booted terminals

- **CT37/CT30 XP non-booted display base, for EU**

Kit includes display base, power supply, EU power cord. For Charging one computer, connection with an external display, and extending I/O for HDMI, Ethernet comm and 3 USB ports, compatible with CT37(w/standard and extended battery) and CT30 XP.

- **CT37/CT30 XP non-booted display base, for UK**

Kit includes display base, power supply, UK power cord. For Charging one computer, connection with an external display, and extending I/O for HDMI, Ethernet comm and 3 USB ports, compatible with CT37 (w/standard and extended battery) and CT30 XP.

- **CT37/CT30 XP 5-bay charging base, standard**

Kit includes 5-bay charging base, power supply, no power cord. Charge up to 4 pcs computers and 4 pcs batteries, compatible with CT37(w/standard and extended battery) and CT30 XP



37-DB-UVN-2



CT37-DB-UVN-3



CT37-5CB-UVN-BAT-0



- CT37-5CB-UVN-1

CT37/CT30 XP non-booted charging base, for US

Kit includes 5 bay charging base, power supply, US power cord. For recharging up to 5 computers, compatible with CT37(w/standard and extended battery) and CT30 XP.

- CT37-5CB-UVN-2

- **CT37/CT30 XP non-booted charging base, for EU**

Kit includes 5 bay charging base, power supply, EU power cord. For recharging up to 5 computers, compatible with CT37 (w/standard and extended battery) and CT30 XP.

- CT37-5CB-UVN-3

CT37/CT30 XP non-booted charging base, for UK

Kit includes 5 bay charging base, power supply, UK power cord. For recharging up to 5 computers, compatible with CT37 (w/standard and extended battery) and CT30 XP.



- **CT37/CT30 XP booted charging base, standard**

Kit includes 4 bay charger, power supply, must order power cord separately. For recharging up to 4 computers, compatible with CT30

XP and CT37 (w/standard and extended battery) with protective boot attached.

- **CT37/CT30 XP booted charging base, for US**

Kit includes 4 bay charger, power supply, US power cord. For recharging up to 4 computers, compatible with CT30 XP and CT37(w/standard and extended battery) with protective boot attached.

- **CT37/CT30 XP booted charging base, for EU**

Kit includes 4 bay charger, power supply, EU power cord. For recharging up to 4 computers, compatible with CT30 XP

and CT37 (w/standard and extended battery) with protective boot attached.



CT30P-CB-UVB-0



CT30P-CB-UVB-1



CT30P-CB-UVB-2



- CT30P-CB-UVB-3

CT37/CT30 XP booted charging base, for UK

Kit includes 4 bay charger, power supply, UK power cord. For recharging up to 4 computers, compatible with CT30 XP and CT37 (w/standard and extended battery) with protective boot attached.

- CT30P-NB-UVB-0

CT37/CT30 XP booted net base, standard

Kit includes net base, power supply, must order power cord separately. For Ethernet communications and recharging up

to 4 computers, compatible with CT30 XP and CT37(w/standard and extended battery) with protective boot attached.

- CT30P-NB-UVB-1

CT37/CT30 XP booted net base, for US

Kit includes net base, power supply, US power cord. For Ethernet communications and recharging up to 4 computers, compatible with CT30 XP and CT37(w/standard and extended battery) with protective boot attached.



- CT30P-NB-UVB-2

- **CT37/CT30 XP booted net base, for EU**

Kit includes net base, power supply, EU power cord. For Ethernet communications and recharging up to 4 computers, compatible with CT30 XP and CT37(w/standard and extended battery) with protective boot attached

- **CT30P-NB-UVB-3CT37/CT30 XP booted net base, for UK**

Kit includes net base, power supply, UK power cord. For Ethernet communications and recharging up to 4 computers, compatible with CT30 XP and CT37 (w/standard and extended battery) with protective boot attached.

- CT37-HB-UVB-0

CT37 booted home base, standard

Kit includes home base, power supply, must order power cord separately. For recharging one computer, CT30 XP or CT37(w/standard and extended battery) with protective boot attached, and a spare battery (CT37 only). Support USB client via USB Type B connector. Can not recharge CT30 XP spare battery.

- **CT37 booted home base, for US**

Kit includes home base, power supply, US power cord. For recharging one computer, CT30 XP or CT37(w/standard and extended battery) with protective boot attached, and a spare battery (CT37 only). Support USB client via USB Type B connector. Can not recharge CT30 XP spare battery.

- **CT37 booted home base, for EU**

Kit includes home base, power supply, EU power cord. For recharging one computer, CT30 XP or CT37(w/standard and extended battery) with protective boot attached, and a spare battery (CT37 only). Support USB client via USB Type B connector. Can not recharge CT30 XP spare battery.

- **CT37 booted home base, for UK**

Kit includes home base, power supply, UK power cord. For recharging one computer, CT30 XP or CT37(w/standard and extended battery) with protective boot attached, and a spare battery (CT37 only). Support USB client via USB Type B connector. Can not recharge CT30 XP spare battery.



CT37-HB-UVB-1



CT37-HB-UVB-2



CT37-HB-UVB-3



- CT37-EB-UVB-0

- **CT37 booted ethernet base, standard**

Kit includes ethernet home base, power supply, must order power cord separately. For recharging one computer, CT30 XP or CT37(w/standard and extended battery) with protective boot attached, and a spare battery (CT37 only). Support USB client via USB Type B connector. Can not recharge CT30 XP spare battery.

- CT37-EB-UVB-1

- **CT37 booted ethernet base, for US**

Kit includes ethernet home base, US power cord. For recharging one computer, CT30 XP or CT37 (w/standard and extended battery) with protective boot attached, and a spare battery (CT37 only). Support USB client via USB Type B connector. Can not recharge CT30 XP spare battery.

- CT37-EB-UVB-2

- **CT37 booted ethernet base, for EU**

Kit includes ethernet home base, EU power cord. For recharging one computer, CT30 XP or CT37(w/standard and extended battery) with protective boot attached, and a spare battery (CT37 only). Support USB client via USB Type B connector. Can not recharge CT30 XP spare battery.



- CT37-EB-UVB-3

- **CT37 booted ethernet base, for UK**

Kit includes ethernet home base, UK power cord. For recharging one computer, CT30 XP or CT37(w/standard and extended battery) with protective boot attached, and a spare battery (CT37 only). Support USB client via USB Type B connector. Can not recharge CT30 XP spare battery.

- CT30P-DB-UVB-0

- **CT37/CT30 XP booted display base, standard**

Kit includes display base, power supply, must order power cord separately. For recharging one computer, CT30 XP or CT37(w/standard and extended battery) with protective boot attached, connection with an external display, extending I/O for HDMI, Ethernet comm and 3 USB ports.

- CT30P-DB-UVB-1

- **CT37/CT30 XP booted display base, for US**

Kit includes display base, power supply, US power cord. For recharging one computer, CT30 XP or CT37(w/standard and extended battery) with protective boot attached, connection with an external display, extending I/O for HDMI, Ethernet comm and 3 USB ports.

- **CT37/CT30 XP booted display base, for EU**

Kit includes display base, power supply, EU power cord. For recharging one computer, CT30 XP or CT37(w/standard and extended battery) with protective boot attached, connection with an external display, extending I/O for HDMI, Ethernet comm and 3 USB ports.

- **CT37/CT30 XP booted display base, for UK**

Kit includes display base, power supply, UK power cord. For recharging one computer, CT30 XP or CT37(w/standard and extended battery) with protective boot attached, connection with an external display, extending I/O for HDMI, Ethernet comm and 3 USB ports.

- **CT37/CT30 XP booted 5-bay charging base, standard**

Kit includes 5-bay charging base, power supply, no power cord. Charge up to 4 pcs computers with protective boot and 4 pcs batteries, compatible with CT30 XP and CT37(w/standard and extended battery).



CT30P-DB-UVB-2



CT30P-DB-UVB-3



CT37-5CB-UVB-BAT-0



- CT37-5CB-UVB-BAT-1

CT37/CT30 XP booted 5-bay charging base, US

Kit includes 5-bay charging base, power supply, US power cord. Charge up to 4 pcs computers with protective boot and 4 pcs batteries, compatible with CT30 XP and CT37(w/standard and extended battery).

- CT30P-UCP-B

CT37/CT30 XP universal cup

Kit includes a cup to be used for CT37 (w/standard and extended battery) and CT30 XP with protective boot. Charging docks, power supply and cables must be ordered separately.

- CT30P-5CB-UVB-0

CT37/CT30 XP booted charging base, standard

- Kit includes 5 bay charging base, power supply, must order power cord separately. For recharging up to 5 computers with protective boot, compatible with CT30 XP and CT37(w/standard and extended battery).



- CT30P-5CB-UVB-1

CT37/CT30 XP booted charging base, for US

Kit includes 5 bay charging base, power supply, US power cord. For recharging up to 5 computers with protective boot, compatible with CT30 XP and CT37(w/standard and extended battery).

- CT30P-5CB-UVB-2

CT37/CT30 XP booted charging base, for EU

Kit includes 5 bay charging base, power supply, EU power cord. For recharging up to 5 computers with protective boot, compatible with CT30 XP and CT37(w/standard and extended battery).

- CT30P-5CB-UVB-3

CT37/CT30 XP booted charging base, for UK

Kit includes 5 bay charging base, power supply, UK power cord. For recharging up to 5 computers with protective boot, compatible with CT30 XP and CT37(w/standard and extended battery).

For batteries

- **CT37/CT30 XP quad battery charger, Standard**

Kit includes quad battery charger, power supply, power cord must be ordered separately. For recharging up to four CT30 XP or CT37 both standard and extended batteries.

- **CT37/CT30 XP quad battery charger, for US**

Kit includes quad battery charger, power supply, US power cord. For recharging up to four CT30 XP or CT37 both standard and extended batteries.

- **CT37/CT30 XP quad battery charger, for EU**

Kit includes quad battery charger, power supply, EU power cord. For recharging up to four CT30 XP or CT37 both standard and extended batteries..



37-QBC-0



CT37-QBC-1



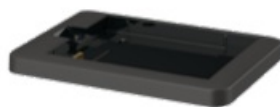
CT37-QBC-2



- CT37-QBC-3

CT37/CT30 XP quad battery charger, for UK

Kit includes quad battery charger, power supply, UK power cord. For recharging up to four CT30 XP or CT37 both standard and extended batteries.



- CT37-UCP-HBEB-BAT

CT37 Battery Cup for HomeBase/EthernetBase

CT37 battery cup for HomeBase and EthernetBase, compatible with CT37 standard and extended battery. It also can be installed on CT30 XP HomeBase(CT30P-HB) and EthernetBase(CT30P-EB) to charge CT37 battery. Can not charge CT30 XP battery.

Healthcare chargers

- **CT37/CT30 XP non-booted 5-bay charging base**

Kit includes 5-bay charging base and power supply. Must order power cord separately. Charge up to 4 pcs

computers and 4 pcs batteries, compatible with CT30 XP and BCT37 (w/standard and extended battery).

- **CT37/CT30 XP booted 5-bay charging base**

Kit includes 5-bay charging base and power supply. Must order power cord separately. Charge up to 4 pcs computers with protective boot and 4 pcs batteries, compatible with CT30 XP and CT37 (w/standard and extended battery).

- **CT37/CT30 XP non-booted display base**

Kit includes display base, power supply, must order power cord separately. For charging one computer, connection with an external display, and extending I/O for HDMI, Ethernet comm and 3 USB ports, compatible with CT30 XP and CT37 (w/standard and extended battery).



CT37-5CB-UVN-HC0



CT37-5CB-UVB-HC0



CT37-DB-UVN-HC0



- CT30P-DB-UVB-HC0

- **CT37/CT30 XP booted display base**

Kit includes display base, power supply, must order power cord separately. For charging one computer with protective boot attached, connection with an external display, extending I/O for HDMI, Ethernet comm and 3 USB ports, compatible with CT30 XP and CT37 (w/standard and extended battery).

- CT37-QBC-HC0

- **CT37/CT30 XP quad battery charger**

Kit includes healthcare quad battery charger and power supply. Must order power cord separately. For recharging up to four CT30 XP or CT37 both standard and extended batteries.

- CT37-UCP-NHC

- **CT37/CT30 XP non-booted universal cup**

Kit includes a cup to be used for CT30 XP and CT37 (w/standard and extended battery). Charging docks, power supply and cables must be ordered separately.



- CT30P-UCP-BHC

CT37/30 XP booted universal cup

Kit includes a cup to be used for CT30 XP and CT37(w/standard and extended battery) with protective boot.
Charging docks, power supply and cables must be ordered separately.

POWER SUPPLIES

- CT37-BTSC-001

Spare Battery Pack, Standard, DRH

CT37 disinfectant ready battery pack, 3846mAh, for use with CT37 disinfectant- ready configurations (last two digits in part number begin with D: CT37- xxx-xxxxxDx). 1 piece per pack.

- CT37-BTSC-001-2PK

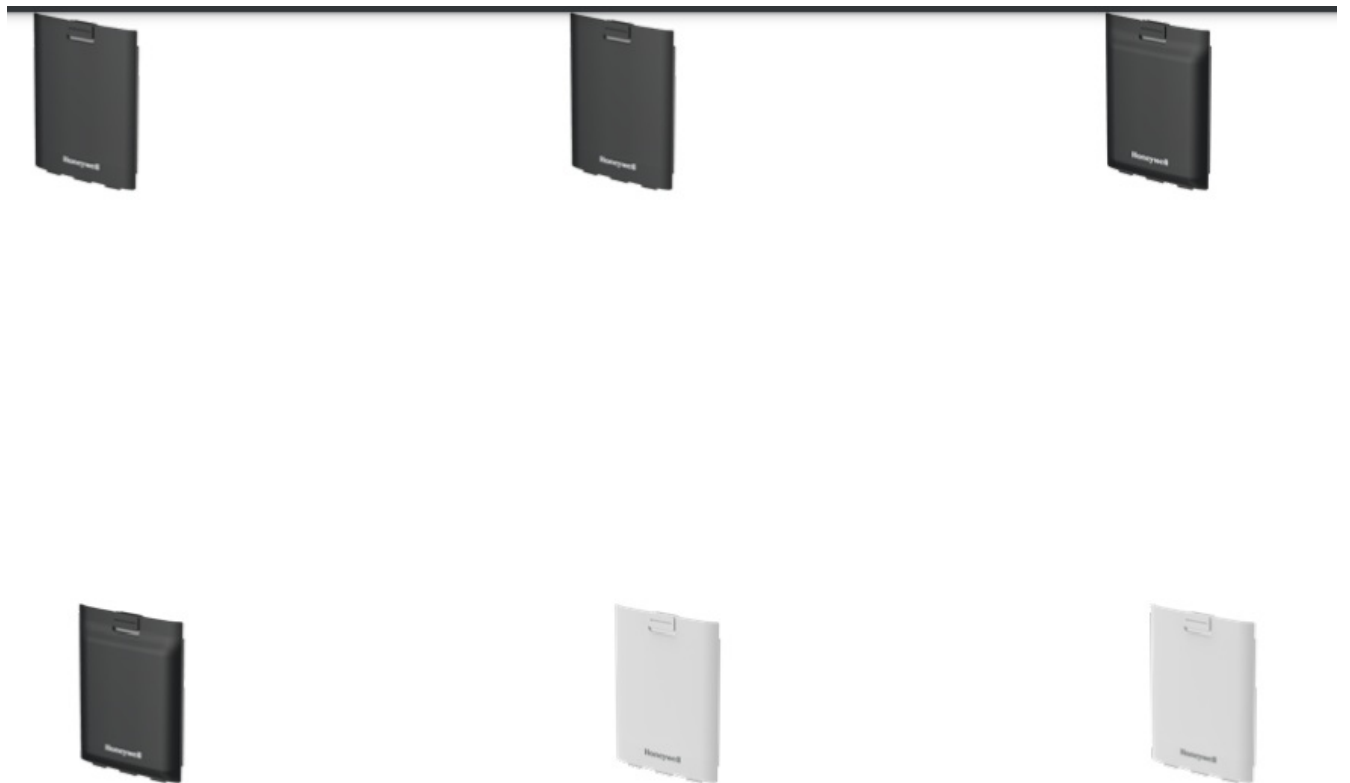
Spare Battery Pack, Standard, DRH

CT37 disinfectant ready battery pack, 3846mAh, for use with CT37 disinfectant- ready configurations (last two digits in part number begin with D: CT37- xxx-xxxxxDx). 2 pieces per pack.

- CT37-BTEC-001

Spare Battery Pack, Extended, DRH

CT37 disinfectant ready battery pack, 5550mAh, for use with CT37 disinfectant- ready configurations (last two digits in part number begin with D: CT37- xxx-xxxxxDx). 1 piece per pack.



CT37-BTEC-001-2PK

Spare Battery Pack, Extended, DRH

CT37 disinfectant ready battery pack, 5550mAh, for use with CT37 disinfectant- ready configurations (last two digits in part number begin with D: CT37-xxx-xxxxxDx). 2 pieces per pack. CT37-BTSC-002

- **Spare Battery Pack, Healthcare**

CT37 healthcare battery pack, 3846mAh, for use with CT37 healthcare and white color computer configurations (last two digits in part number begin with H and W: CT37-xxx-xxxxxHx and CT37-xxx-xxxxxWx). 1 piece per pack. CT37-BTSC-002-2PK

Spare Battery Pack, Healthcare

CT37 healthcare battery pack, 3846mAh, for use with CT37 healthcare and white color computer configurations (last two digits in part number begin with H and W: CT37-xxx-xxxxxHx and CT37-xxx-xxxxxWx). 2 pieces per pack.



- 50121667-001

Quad Base Power Supply

An 84 W power supply for use with four-bay charging base and four-bay net base. Requires country-specific line cord to be ordered separately.

- 50121666-001

Desktop Power Supply

A 36 W power supply for use with Ethernet home base, charge-only home base, and quad battery charger. Requires country-specific line cord to be ordered separately.

- 50136024-001

Desktop Power Supply

KIT, 5V/2A Power supply, Scanpal EDA50K/51/60/61K/70/71/52/5S. Mobility Edge CT40/CT60. Includes 5 PLUGS PACKED US, UK, AU, EU, IN adapters.



- CT37-SH-UVN

CT37 Scan Handle, non-booted

CT37 scan handle, compatible with CT37(w/standard and extended battery) without protective boot; compatible with non-booted chargers. Not compatible with healthcare model (CT37-xxx-xxxxxHx).

- CT37-SH-UVB

CT37 Scan Handle, booted

CT37 scan handle compatible with CT37 (w/standard and extended battery) with protective boot; compatible with booted chargers. Not compatible with healthcare model (CT37-xxx-xxxxxHx).

OTHER ACCESSORIES

- CT37 Hand Strap, Black CT37 hand strap, 3pcs

- CT37 Hand Strap, Grey

CT37 hand strap, 3pcs, healthcareC

- CT37 Protective Boot, Standard, Black

CT37 protective boot. It is compatible with booted universal docks (CT30P-xx-UVB, CT37-xx-UVB).

Recommended for CT37-xxx-xxxxxDx. Can not use on CT30 XP mobile computer



CT37-HS-3PK



CT37-HS-HC-3PK



CT37-PB-STD

- CT37 Protective Boot, Grey
CT37 protective boot, grey. It is compatible with booted universal docks (CT30P-xx-UVB, CT37- xx-UVB). Recommended for CT37-xxx-xxxxxWx and CT37-xxx-xxxxxHx (not disinfectant ready). Can not use on CT30 XP mobile computer
- CT37 Carrying Clip, Black
CT37 carrying clip. Snaps on top of CT37 terminal of WLAN configuration (CT37-X0N-xxxxxDx)
1 piece is included in the kit
- CT37 Carrying Clip, white, Healthcare
CT37 healthcare carrying clip. Snaps on top of CT37 terminal of WLAN configurations (CT37- X0N-xxxxxHx and CT37-X0N-xxxxxWx).
1 piece is included in the kit.



CT37-PB-GRY



CT37-CLIP-LAN-STD



CT37-CLIP-LAN-HC

- CT37 Wearable Kit CT37 wearable Kit.
 - Not compatible with CT37 protective boot. Not compatible with CT30 XP.
- CT37 Wearable Kit, Spare Armband CT37 wearable kit, spare armband. 3 pieces per pack.
- CT37 Wearable Kit, Spare Rubber Pad CT37 wearable kit, spare rubber pad. 2 pieces per pack



CT37-WS-KIT



CT37-WS-KIT-01



CT37-WS-KIT-02

- CT37 Wearable Kit, Spare Sled CT37 wearable kit, spare sled. 2 pieces per pack.
- CT37 USB-C Plug, Healthcare CT37 USB-C Plug.
Recommended for CT37-xxx-xxxxxHx 5 pieces per pack.
- IH45 bracket for CT37, Non-booted
IH45 bracket for non-booted CT37 (w/standard and extended battery). Not compatible with protective boot. 4 screws are shipped with bracket as a kit.



CT37-WS-KIT-03



CT37-USBC-PLUG-5PK



IH45-BK-37S

- Mobility USBC Headset
Mobility headset with PTT, USB-C interface
- CT37 Screen Protector
CT37 screen protector, 1 piece per pack. Can be used with stylus.



MBL-HDST-USBC



CT37-SP-1PK

SD CARDS

- 856-065-004
Industrial-Grade Micro-SD Card* Micro-SD card, 1 GB, AF1GUDI, RoHS
- 856-065-005
Industrial-Grade Micro-SD Card* Micro-SD card, 2 GB, AF1GUDI, RoHS
- 856-065-006
Industrial-Grade Micro-SD Card* Micro-SD card, 4 GB, AF1GUDI, RoHS
- 856-065-007
Industrial-Grade Micro-SD Card* Micro-SD card, 8 GB, AF1GUDI, RoHS

* Micro-SD cards are required when databases are stored on the device. The database should be stored on the SD card.

AC LINE CORDS

- 50127245-001
 - Power Cord – India
 - Power cord, India, 1.5 m (4.9 ft)
- 50117501-001
 - Power Cord – Australia
 - Power cord, Australia, 2.5 m (8.2 ft)
- 50117503-001
 - Power Cord – CB
 - Power cord, Argentina, Isled CB

- 77900506E
 - Power Cord – US
 - Power cord, U.S., IEC320-C13, 1.85 m (6.07 ft)
- 77900507E.
 - Power Cord – UK
 - Power cord, UK, IEC320-C13, 2.5 m (8.2 ft)
- 77900508E
 - Power Cord – EU
 - Power cord, Europe, IEC320-C13, 2.5 m (8.2 ft)
- 19-19807
 - Power Cord – China
 - Cable, China cord set (CCC), 2.5 m (8.2 ft)
- 130063
 - Power Cord – US
 - Cable, power cord/IEC, U.S., 2.5 m (8.2 ft)

For more information

automation.honeywell.com


Honeywell Industrial Automation 855 S Mint Street,
Charlotte, NC 28202

[800-582-4263](tel:800-582-4263)

www.honeywell.com

CT37 / CT37 Mobile Computer Accessories Guide | Rev A | 08/24 © 2024 Honeywell International Inc.

Documents / Resources

	<p>Honeywell CT37 HC Mobile Computer [pdf] Installation Guide</p> <p>CT37-CB-UVN-0, CT37-CB-UVN-1, CT37-CB-UVN-2, CT37-CB-UVN-3, CT37-NB-UVN-0, CT37-NB-UVN-1, CT37-NB-UVN-2, CT37-NB-UVN-3, CT37 HC Mobile Computer, CT37, HC Mobile Computer, Mobile Computer, Computer</p>
---	---

References

- [H Industrial Automation | Honeywell](#)
- [H Honeywell - The Future Is What We Make It](#)
- [User Manual](#)

[Manuals+](#), [Privacy Policy](#)

This website is an independent publication and is neither affiliated with nor endorsed by any of the trademark owners. The "Bluetooth®" word mark and logos are registered trademarks owned by Bluetooth SIG, Inc. The "Wi-Fi®" word mark and logos are registered trademarks owned by the Wi-Fi Alliance. Any use of these marks on this website does not imply any affiliation with or endorsement.