



Honeywell Home RDWL313P2000 Plug-In Wireless Doorbell with Strobe Light and Push Button Installation Guide

[Home](#) » [Honeywell Home](#) » Honeywell Home RDWL313P2000 Plug-In Wireless Doorbell with Strobe Light and Push Button Installation Guide 

Honeywell Home

Installation and Operation Guide
Plug-In Wireless Doorbell
RDWL313P2000
Read before installing

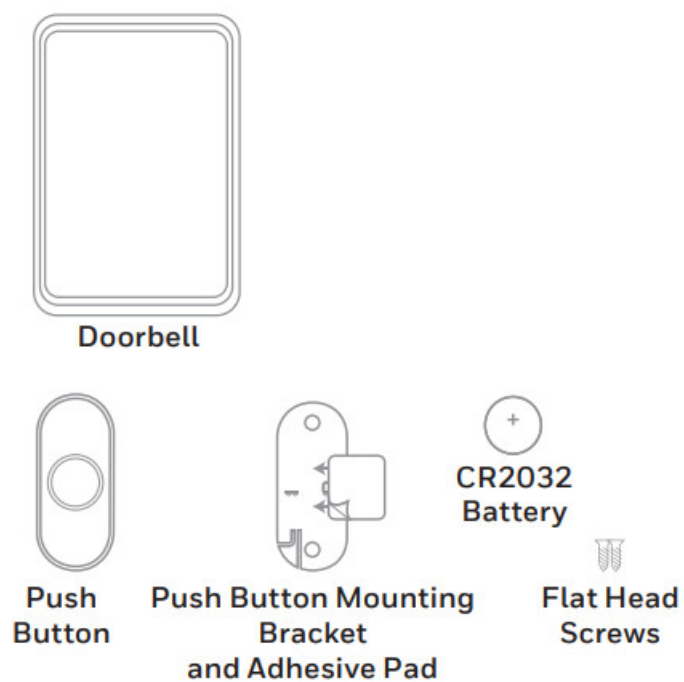


Contents

- [1 Preparation](#)
- [2 Overview](#)
- [3 Power-up](#)
- [4 Setup and Operation](#)
- [5 Install Push Button](#)
- [6 Accessories](#)
- [7 Maintenance](#)
- [8 Specifications](#)
- [9 Troubleshooting](#)
- [10 FCC Regulations](#)
- [11 IC Regulations](#)
- [12 1-year limited warranty](#)
- [13 Documents / Resources](#)
 - [13.1 References](#)
- [14 Related Posts](#)

Preparation

In the box, you will find



To install you will need



The push-button supplied with this kit is pre-programmed to operate with the doorbell. If it is not, see "Connect a Push Button" on page 4.

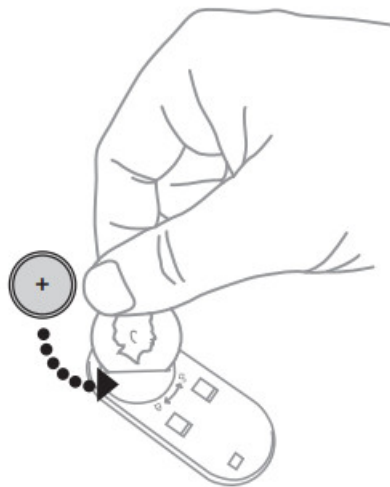
Overview

Just follow these simple steps:

1. Install the push button battery and plug in the doorbell.
2. Set up the doorbell and your preferences.
3. Install the push button.

Power-up

1. Choose an outlet location that is not near a heat source, where the doorbell will be easy to see and hear and plug in the doorbell.
2. Open the push button battery cover and install the CR2032 battery.

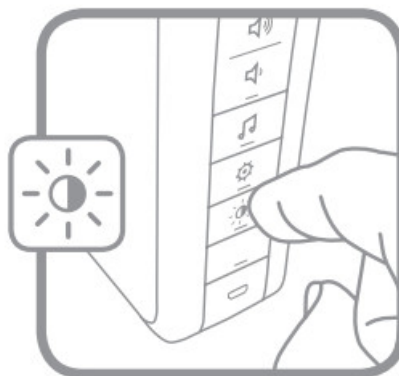


Setup and Operation

Press the push button to test whether it is paired with the doorbell. The doorbell will light up and ring. If it does not, see “Connect a Push Button” on page 4.

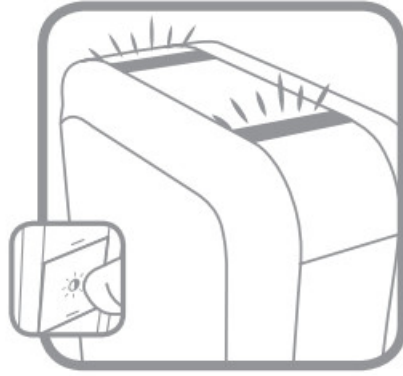
Change the Light Setting

Press the Sunlight button to change the lights that flash when the doorbell rings.



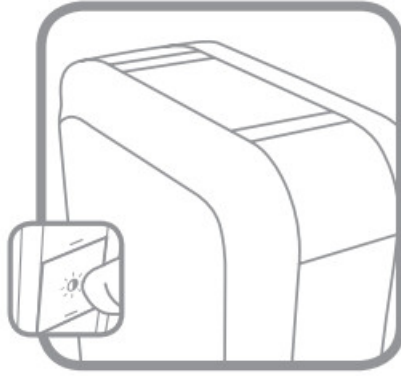
Press the Sunlight button

1 time



Top lights only

2 times

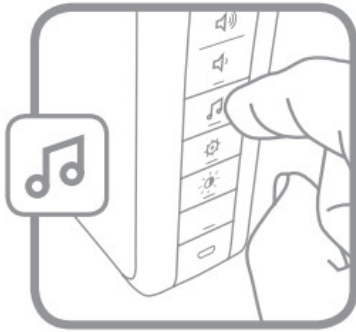


No lights.

Change the Tune

Press the Music button to change the doorbell tune.

Every time you press the Music button, the tune will change. Stop pressing the Music button when you hear the tune you want:



Ding Dong
Westminster
Piano
Fantasy
Soft Alert
Smart Sax

Adjust the Volume

Press the Volume Up or Volume Down buttons to adjust the volume of the Doorbell.



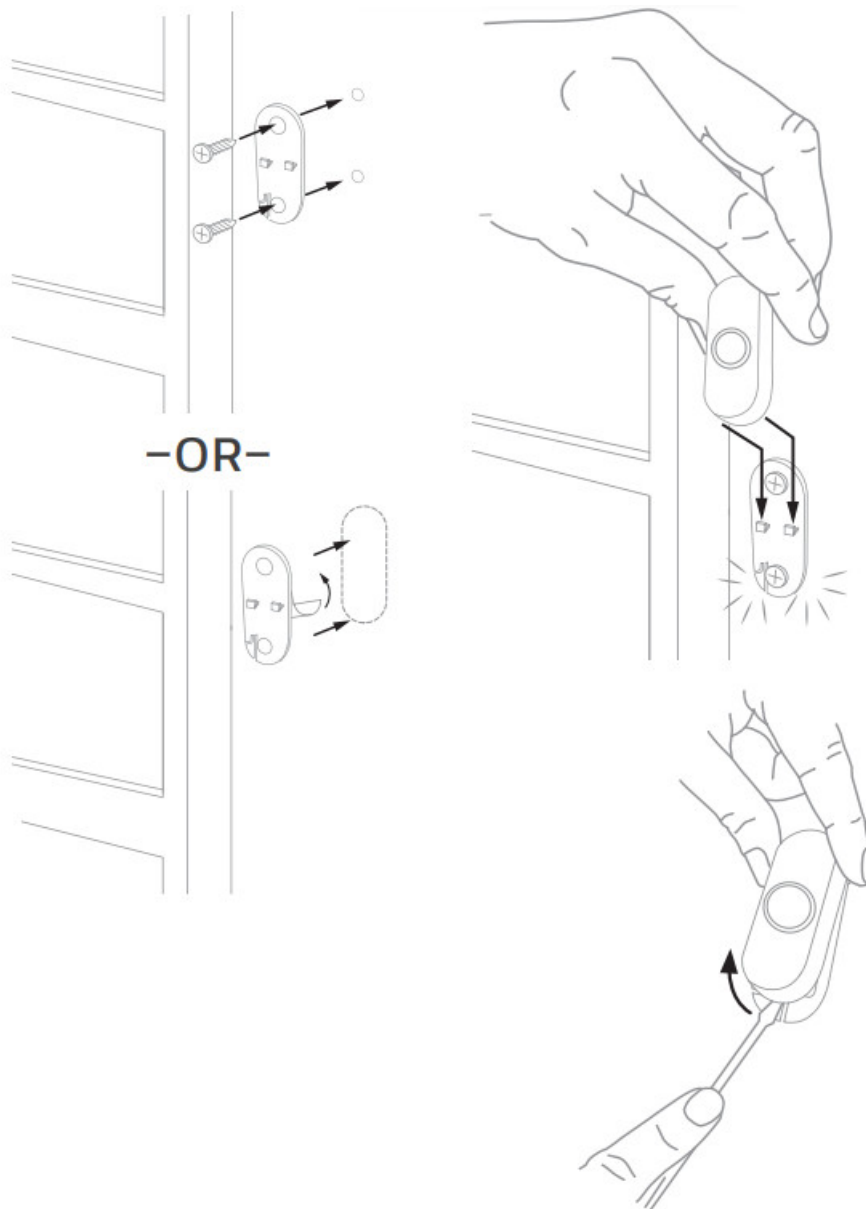
Install Push Button

1. Mount the push button bracket in the desired location Use the screws

–OR–

Use the adhesive backing. If using the adhesive backing, clean the surface first.

2. Snap the push button onto the mounting bracket.

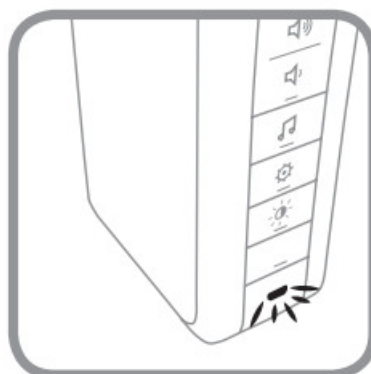


Note: If you need to remove the push button, use a small screwdriver to release the tab.

Accessories

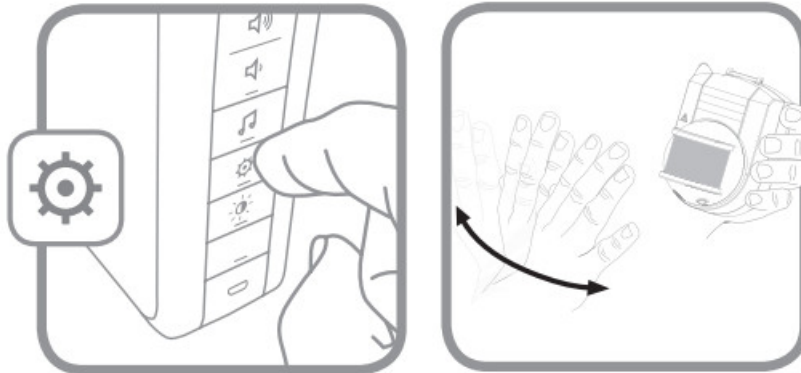
You can connect 4 accessories to your doorbell, including other pushbuttons, window or door opening sensors, and motion sensors.

If you try to connect more accessories than the max number, the LED on the side blinks red.



Connect a Motion Sensor

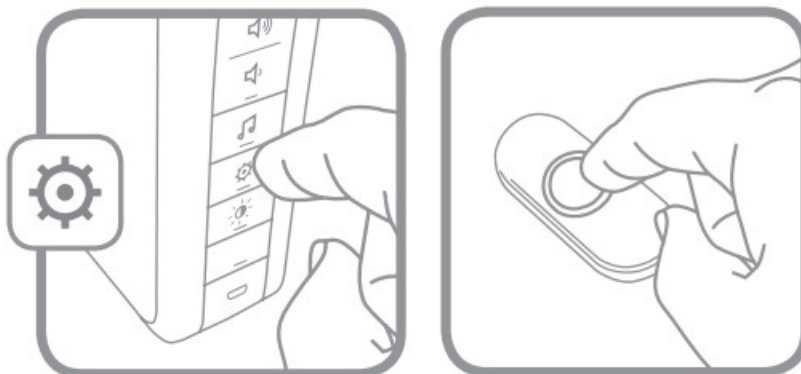
1. Press and hold the Setting button on the doorbell for three seconds LED on the side turns on with an amber color.
2. Within 20 seconds of pressing the Setting button, wave or make some other kind of motion in front of the motion sensor.



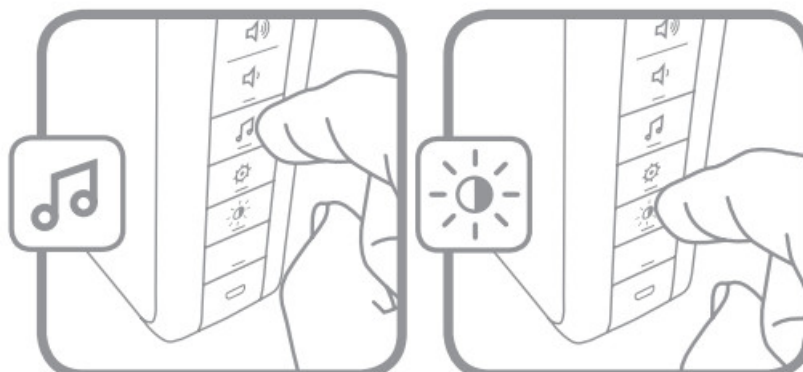
Connect a Push Button

Follow these steps to change the ring and light settings for an existing doorbell, too.

1. Press and hold the Setting button on the doorbell for three seconds.
The LED on the side turns on with an amber color.
2. Press the push button.



3. Within 12 seconds of pressing the push button, press the Music button to select the ring for that push button.
4. Within 12 seconds of pressing the doorbell, press the Sunlight button to select the light setting for that push button.



You can set up a Secret Knock that makes a different ring and light setting for each push button. The Secret Knock is triggered by pressing the push button quickly 3 times.

1. Press the push button 3 times quickly.
2. Within 12 seconds of pressing the push button, press the Music button to select the ring for the Secret Knock
3. Within 12 seconds of pressing the push button, press the Sunlight button to select a light setting for the Secret Knock.

Maintenance

Your doorbell and push-button require no maintenance except to periodically change the battery. If using the correct battery, its life should be approximate:

- Up to 2 years for the push button; replace with CR2032 lithium battery

Low Battery Notification

When the push-button batteries are low, two beep sounds are heard after the normal tune.

Reset

This process removes all pairings, including the push button that came with this doorbell:

1. Unplug the doorbell.
2. Press and hold the Setting button, and plug the doorbell back in at the same time.
3. The doorbell will beep several times rapidly and is returned to its factory default settings.

Specifications

	Doorbell	Push Button
Operating Temperature	23°F to 104°F (-5°C to 40°C)	-4°F to 122°F (-20°C to 50°C)
ActivLinliu	916.8 MHz	916.8 MHz
Range (open field)	250 ft (76 m)	250 ft. (76 m)
Sound Level (typical)	84dBA	—
RF Power	—	<1.2W
Battery Type	Input 100-240V- 50-60Hz 300 mA	CR2032
Battery Life (5 activations/day)	—	Up to 2 years
Rainproof	N/A	Pass UL1598 rain test.

Troubleshooting

If	Then
The doorbell does not work	<ol style="list-style-type: none"> 1. Make sure the correct batteries (1 CR2032) are polarity. 2. The doorbell might be out of range; try the door 3. Reconnect the doorbell. See “Connect a Push E
Two ‘beep’ sounds are heard after the normal tune	Replace the push button battery with a new CR2032
Range is reduced	<ol style="list-style-type: none"> 1. Metal structures including uPVC door frames can mount the doorbell or push the button on or near n 2. Move the doorbell closer to the push button. 3. Weak batteries will reduce range. In cold conditi batteries may need to be replaced more often.

For help please visit honeywellhome.com or call 1-800-633-3991.

FCC Regulations

This device complies with part 15 of the FCC Rules. Operation is subject to the following two conditions: (1) This device may not cause harmful interference, and (2) this device must accept any interference received, including interference that may cause undesired operation.

The grantee is not responsible for any changes or modifications not expressly approved by the party responsible for compliance. Such modifications could void the user's authority to operate the equipment.

This equipment has been tested and found to comply with the limits for a Class B digital device, according to part 15 of the FCC Rules. These limits are designed to provide reasonable protection against harmful interference in a residential installation. This equipment generates, uses and can radiate radio frequency energy and, if not installed and used in accordance with the instructions, may cause harmful interference to radio communications. However, there is no guarantee that interference will not occur in a particular installation. If this equipment does cause harmful interference to radio or television reception, which can be determined by turning the equipment off and on, the user is encouraged to try to correct the interference by one or more of the following measures:

- Reorient or relocate the receiving antenna.
- Increase the separation between the equipment and receiver.
- Connect the equipment into an outlet on a circuit different from that to which the receiver is connected.
- Consult the dealer or an experienced radio/TV technician for help.

This transmitter must not be co-located or operating in conjunction with any other antenna or transmitter. This equipment should be installed and operated with a minimum distance of 20 millimeters between the radiator and your body.

IC Regulations

CAN ICES-3(B)/ NMB-3(B)

This device complies with Industry Canada licence-exempt RSS standard(s). Operation is subject to the following two conditions: (1) this device may not cause interference, and (2) this device must accept any interference, including interference that may cause undesired operation of the device.

CAN ICES-3(B)/NMB-3(B)

The device meets the exemption from the routine evaluation limits in section 2.5 of RSS 102 and compliance with RSS-102 RF exposure, users can obtain Canadian information on RF exposure and compliance.

This transmitter must not be co-located or operating in conjunction with any other antenna or transmitter. This equipment should be installed and operated with a minimum distance of 20 millimeters between the radiator and your body.

The operation of this equipment is subject to the following two conditions: (1) this equipment or device may not

cause harmful interference, and (2) this equipment or device must accept any interference, including interference that may cause undesired operation.

1-year limited warranty

Resideo warrants this product, excluding battery, to be free from defects in workmanship or materials, under normal use and service, for a period of one (1) year from the date of first purchase by the original purchaser. If at any time during the warranty period the product is determined to be defective due to workmanship or materials, Resideo shall repair or replace it (at Resideo's option). If the product is defective,

- (i) return it, with a bill of sale or other dated proof of purchase, to the place from which you purchased it; or
- (ii) call Resideo Customer Care at 1-800-633-3991. Customer Care will make the determination whether the product should be returned to the following address: Resideo Return Goods, 1985 Douglas Dr. N., Golden Valley, MN 55422, or whether a replacement product can be sent to you.

This warranty does not cover removal or reinstallation costs. This warranty shall not apply if it is shown by Resideo that the defect was caused by damage that occurred while the product was in the possession of a consumer.

Resideo's sole responsibility shall be to repair or replace the product within the terms stated above. RESIDEO SHALL NOT BE LIABLE FOR ANY LOSS OR DAMAGE OF ANY KIND, INCLUDING ANY INCIDENTAL OR CONSEQUENTIAL DAMAGES RESULTING, DIRECTLY OR INDIRECTLY, FROM ANY BREACH OF ANY WARRANTY, EXPRESS OR IMPLIED, OR ANY OTHER FAILURE OF THIS PRODUCT.

Some states do not allow the exclusion or limitation of incidental or consequential damages, so this limitation may not apply to you.

THIS WARRANTY IS THE ONLY EXPRESS WARRANTY RESIDEO MAKES ON THIS PRODUCT. THE DURATION OF ANY IMPLIED WARRANTIES, INCLUDING THE WARRANTIES OF MERCHANTABILITY AND FITNESS FOR A PARTICULAR PURPOSE, IS HEREBY LIMITED TO THE ONE-YEAR DURATION OF THIS WARRANTY. Some states do not allow limitations on how long an implied warranty lasts, so the above limitation may not apply to you.

This warranty gives you specific legal rights, and you may have other rights which vary from state to state. If you have any questions concerning this warranty, please write Resideo Customer Care, 1985 Douglas Dr, Golden Valley, MN 55422 or call 1-800-633-3991.



Resideo Inc., 1985 Douglas Drive North
Golden Valley, MN 55422
33-00193EFS—05 M.S. Rev. 01-20 | Printed in United States


www.resideo.com

This product is manufactured by Resideo Technologies, Inc., Golden Valley, MN, 1-800-633-3991
© 2020 Resideo Technologies, Inc. The Honeywell Home trademark is used under license from Honeywell International Inc.
All rights reserved.



33-00193EFS-05

Documents / Resources

 <p>The image shows the front cover of the Honeywell Home RDWL313P2000 Plug-In Wireless Doorbell. It features a white push button and a small rectangular display screen. The text on the cover includes 'Honeywell Home', 'Installation and Operation Guide', 'Plug-In Wireless Doorbell', and 'RDWL313P2000'. There are also icons for 'Preparation' and 'To install, please use'.</p>	<p>Honeywell Home RDWL313P2000 Plug-In Wireless Doorbell with Strobe Light and Push Button [pdf] Installation Guide</p> <p>RDWL313P2000, Plug-In Wireless Doorbell with Strobe Light and Push Button</p>
---	--

References

- [H Honeywell Home | Smart Home Comfort and Security](#)