




Honeywell Home HCC100 Underfloor Multi Zone Controller User Guide

[Home](#) » [Honeywell Home](#) » Honeywell Home HCC100 Underfloor Multi Zone Controller User Guide 

Contents

- [1 Honeywell Home HCC100 Underfloor Multi-Zone Controller](#)
- [2 System Status and Faults](#)
- [3 Zone Overview](#)
- [4 Connections](#)
- [5 Advanced Parameter List](#)
- [6 INSTALLATION STEPS](#)
- [7 Documents / Resources](#)
- [8 Related Posts](#)

Honeywell Home

Honeywell Home HCC100 Underfloor Multi-Zone Controller



HCC100 Underfloor Multi-Zone Controller







Online instructions

System Status and Faults

#			Description	Action
-			System working OK	-
-			System NOT configured .	-
-			Bluetooth® enabled (pin hole pressed)	-
-			Bluetooth® connected to App	-
-			Condensation detected - Cool mode	Cooling demand switched off and pump off
1			Boiler - OpenTherm® comms lost	No demand control
2			Boiler fault received via OpenTherm®	No demand control
3			Outside temp. sensor failure .	Normal control with OTC disabled
4			Supply temp. sensor failure	Normal control with OTC disabled
5			On/Off boiler and OTC and no supply sensor detected	Normal control with OTC disabled
6			Heat demand RF comms lost	No demand control anymore
7			Cool demand RF comms lost	No demand control anymore

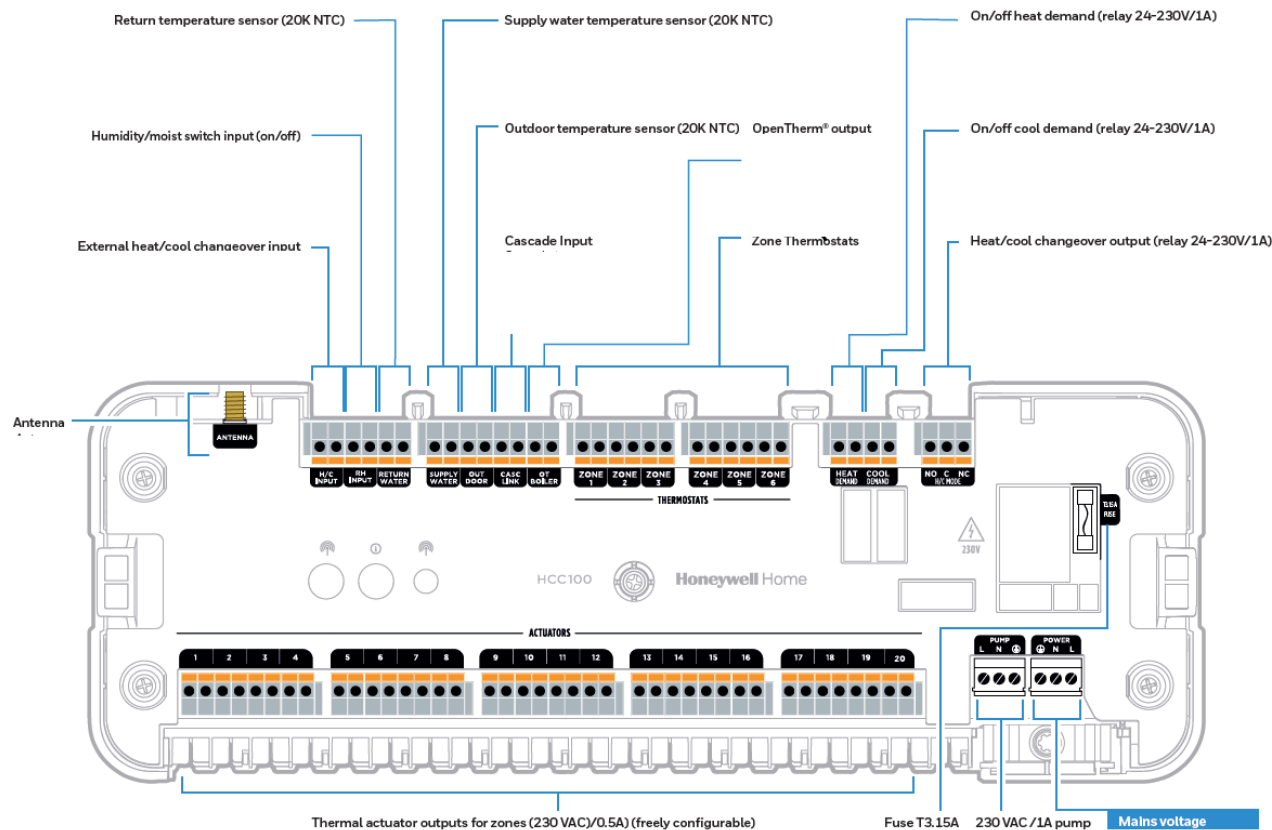
7	 	Cool demand RF comms lost	No demand control anymore
8	 	Heat/cool mode RF comms lost	No demand control anymore
9	 	Evohome RF comms lost	Zone demand off, valve(s) closed
10	 	Gateway RF comms lost (future)	No data sharing
11	 	Cascade comm lost	No demand control anymore
12	 	Failure with cascade controller	No demand control anymore
20	 ** 	General controller failure	No proper control anymore
21-40	 ** 	Actuator failure detected	Zone demand off, valve(s) closed
41-48	 * 	OpenTherm® or RF comms lost	Zone demand off, valve(s) closed

-    Flash Blinking
-  Pulsing (breathing)
- Only when it's a wireless thermostat
- Only when wireless device binding is configured (**green = encrypted, orange = standard**)

Zone Overview

Zone	Zone Name	Thermostat location	Wired or Wireless	Actuator Output
1				
2				
3				
4				
5				
6				
7				
8				

Connections



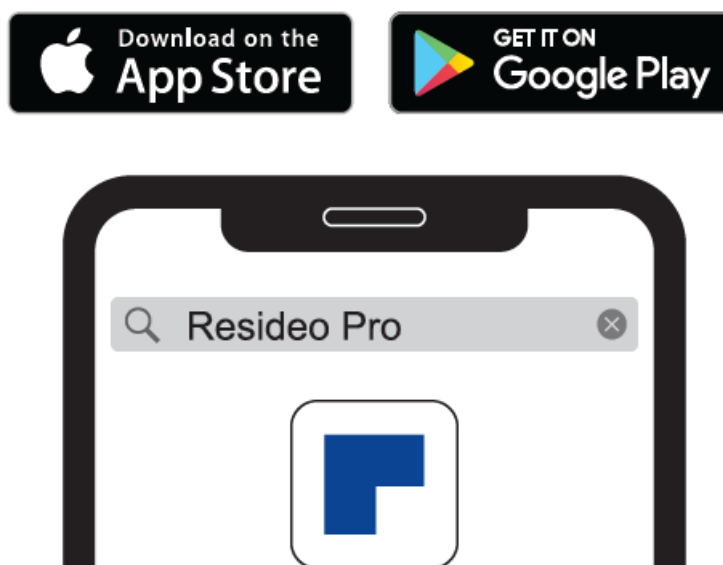
Advanced Parameter List

Description	Default	Unit	Range	Steps
1 Pump overrun time (and opening dump zone): Duration that the pump runs, and dump zone is opened after a heat or cool demand	10	Min.	0-60	5
2 Valve control dead time: Delay time before demand starts due to slow open or close time thermal actuators	35	Sec.	0-240	1
3 Dump zone: Zone which is opened during pump overrun time (finish appliance cycle). 0 = zone which had demand remains open	0		0-8	1
4 ECO limit (changeover value comfort-ECO mode) Setpoint of zone 1 which triggers all zones to change	18	°C	7-30	1
5 Maximum supply water temperature	45	°C	0-90	5
6 Minimum supply water temperature	20	°C	0-90	5
7 Heat Demand Cycle time (5 cycles per hour = 12 min): Cycle time related to on/off heat demand	5	Cycles/hr	1-12	1

8	Cool Demand Cycle time (5 cycles per hour = 12 min): Cycle time related to on/off cool demand	5	Cycles/ hr	1-12	1
9	Optimized Demand Control: ON = Longer demand periods, less cycling (heat pump)	ON		ON/OFF	
10	Min. On time: Minimum on time for the demand cycle rate	1	Min.	1-30	1
11	Min. Off time: Minimum off time for the demand cycle rate	1	Min.	0-30	1
12	Outdoor Temp. Compensation (heat curve setting): Ratio between measured outside air temp. and calculated supply water temp. 0 = OTC disable	0	Factor	0-40	1
13	On/Off switch differential: Switch differential of supply water temperature during on/off OTC control	5	°C	1-25	1
14	Central or Individual pump control: When cascading multiple controllers each controller can control a pump or the main controller can control a central pump	Individual		Central Individual	
15	Heat-Cool demand switch over delay time: Time delay between demand call from heating after cooling or vice versa	0	Hour	0-24	1
16	Pump seizure protection: Number of days of stand still before pump and actuator outputs will be powered for min amount of time	14	Days	0-60	1

INSTALLATION STEPS

1. Install "Resideo Pro" App

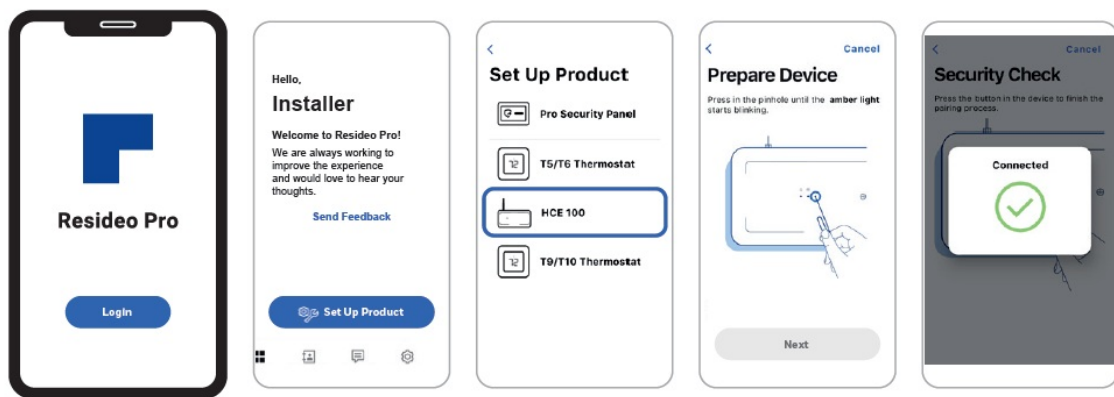


1. Create an account

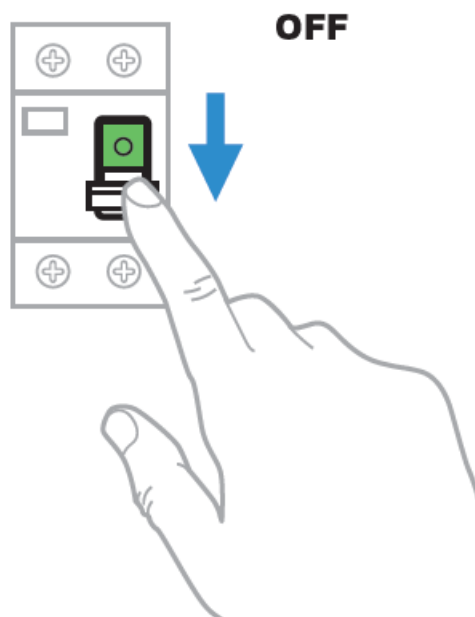


Account approval

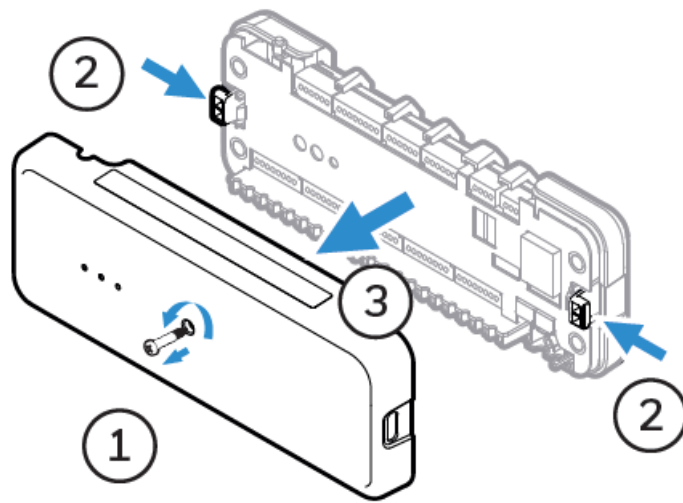
2. Log in and follow the instructions to configure the system



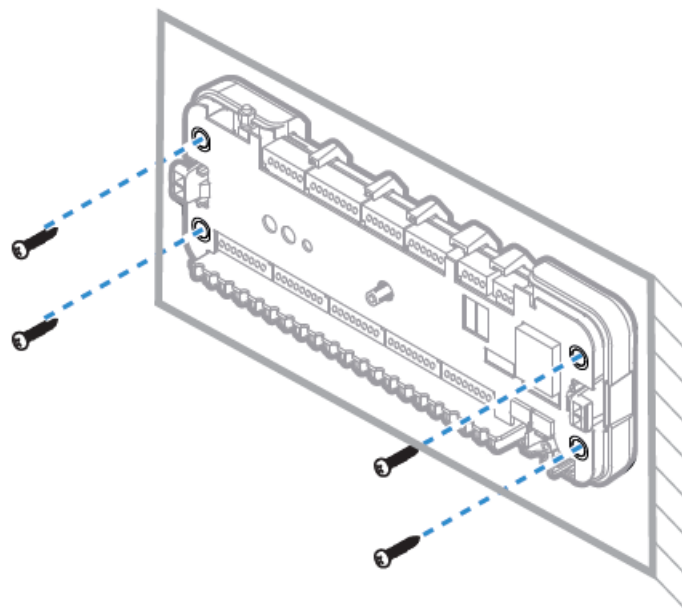
2. Switch power OFF



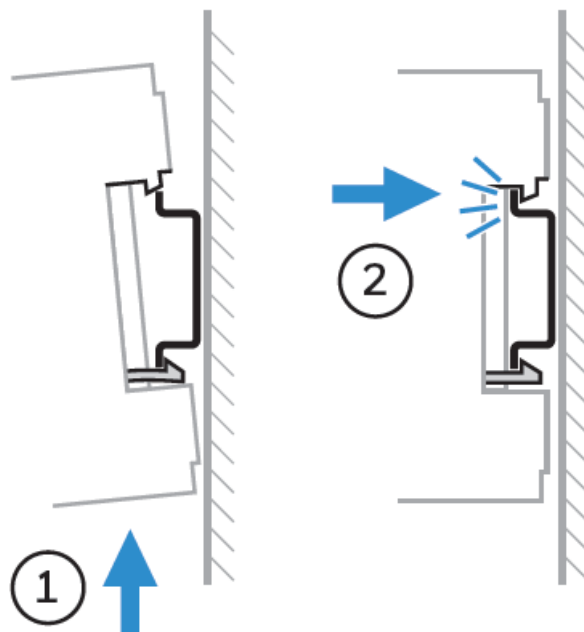
3. Remove cover



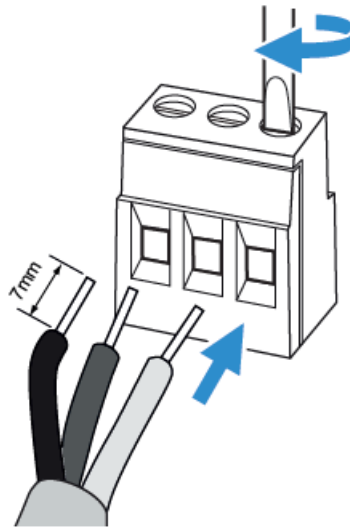
4. Mounting on a wall



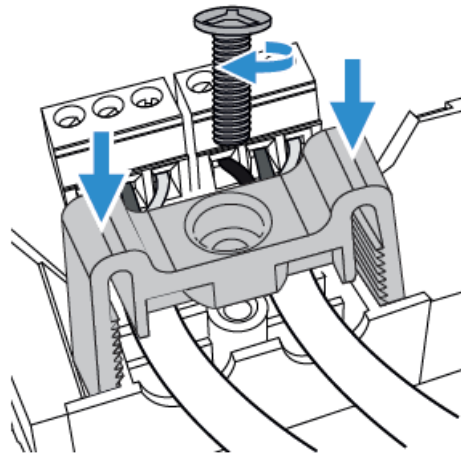
1. Mounting on a DIN rail



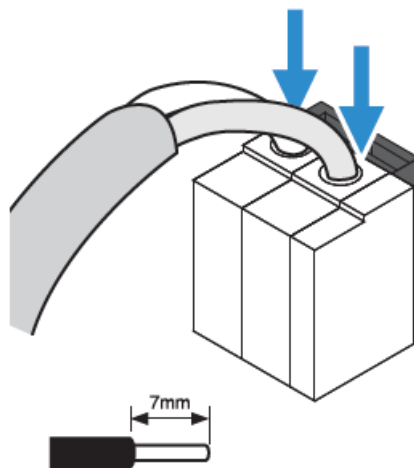
5. Screw terminals



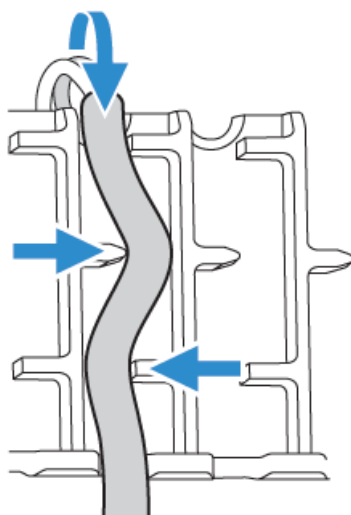
1. Cable strain relief



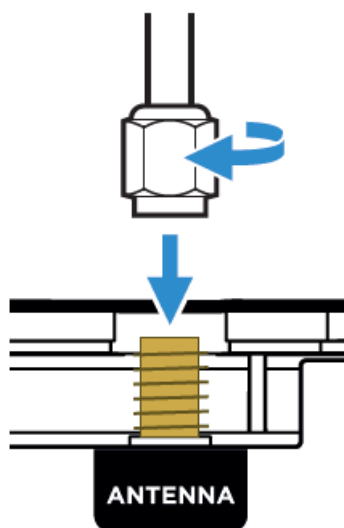
6. Spring terminals



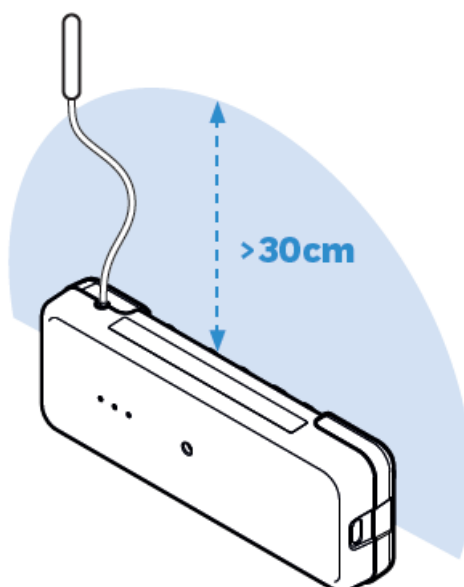
1. Cable strain relief



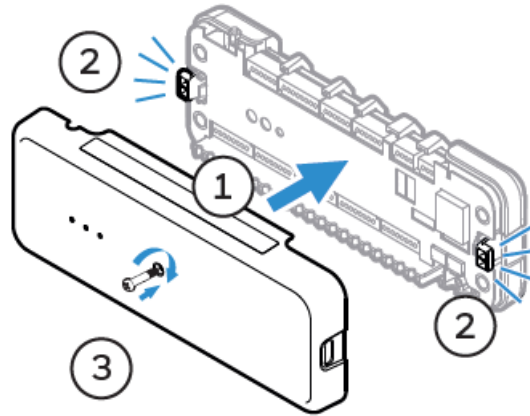
7. Antenna connection



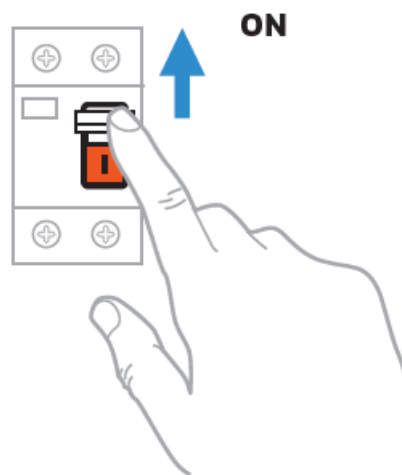
1. Antenna placement



8. Replace cover



9. Switch power ON



Pittway Sarl, Z.A. La Pièce 4, 1180 Rolle, Switzerland **Country of origin** : Slovakia

© 2022 Resideo Technologies, Inc. All rights reserved.

The Honeywell Home trademark is used under license from Honeywell International Inc. This product is manufactured by Resideo Technologies, Inc. and its affiliates.

Documents / Resources

	<p>Honeywell Home HCC100 Underfloor Multi Zone Controller [pdf] User Guide HCC100M2022 Underfloor Multizone Controller, HCC100, Underfloor Multi Zone Controller, HC C100 Underfloor Multi Zone Controller, Multi Zone Controller, Controller</p>
--	---