



HOMTRONICS HMT1 Probe Plus Smart Wireless Thermometer User Manual

[Home](#) » [HOMTRONICS](#) » HOMTRONICS HMT1 Probe Plus Smart Wireless Thermometer User Manual 

Contents

- [1 HOMTRONICS HMT1 Probe Plus Smart Wireless Thermometer](#)
- [2 Get Started](#)
- [3 Repeater / Function of Indicated Lights / Buttons](#)
- [4 Specification](#)
- [5 Download APP](#)
- [6 FCC STATEMENT](#)
- [7 Contacts](#)
- [8 Documents / Resources](#)
 - [8.1 References](#)
- [9 Related Posts](#)

HOMTRONiCS

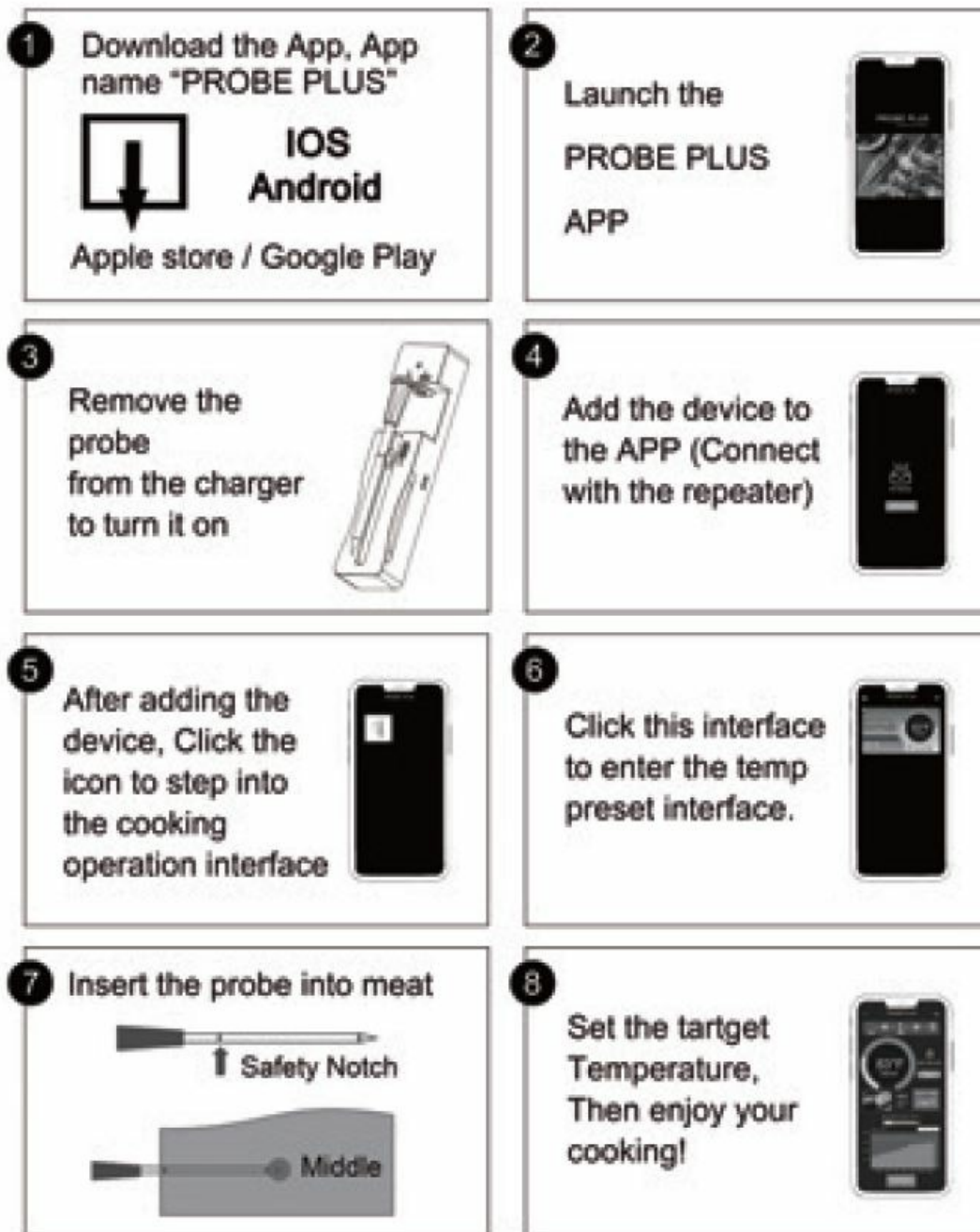
HOMTRONICS HMT1 Probe Plus Smart Wireless Thermometer



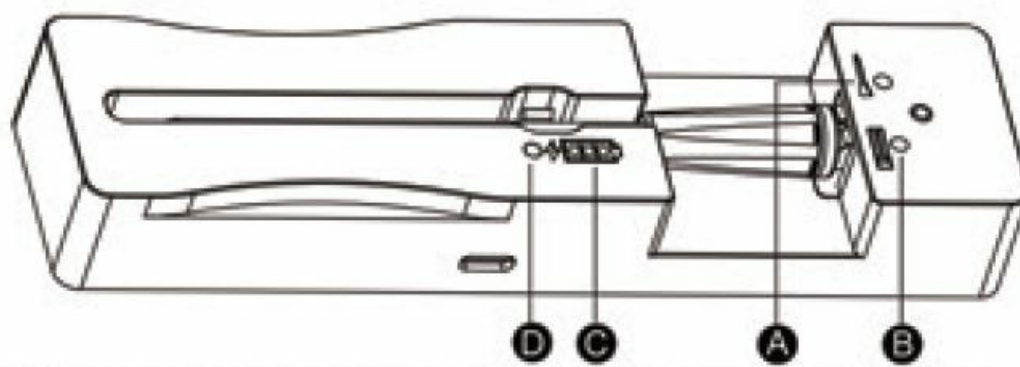
Thank you for choosing PROBE PLUS 1

Only a few steps away to use the PROBE PLUS for cook.

Get Started



Repeater / Function of Indicated Lights / Buttons



- The connection status between the probe and repeater, and the charging status of probe.
 - Connection Status:
 - Red Light Flashing: The probe is disconnected with repeater.
 - Green Light Flashing: The probe is connected with repeater.

- Probe Power(When the probe is placed back into dock):
 - **Red Light On:** The probe is charging.
 - **Red Light off:** The probe charged.
- The connection status between the repeater and mobile device.
 - **Red Light Flashing:** The repeater is disconnected with the mobile device.
 - **Green Light Flashing:** The repeater is connected with the mobile device.
- Indicates the battery level of repeater.
 - **3 Bars:** 90%-100% Power of repeate
 - **2 Bars:** 40%-90% Power of repeater
 - **1 Bar:** 10%-3016 Power of repeater.
 - **Empty:** Less than 10% or no Power of repeater
- Indicates the battery's charging status of repeater.
 - **Red Light:** The repeater is chargin
 - **Green Light:** The repeater is fully charged.

Reset Button



- If something wrong. Press the button to reset the repeater, and try again.

Battery Button



- Press the button to show the battery level of the repeater.

Charging Socket



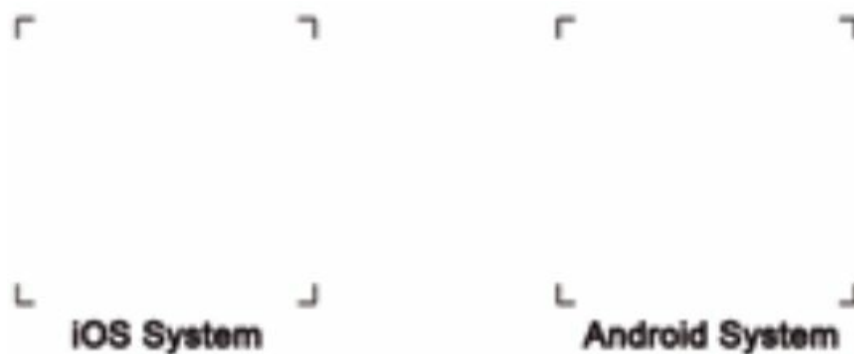
- Use the TYPE-C charging cable for charging.

Specification

- **Supported Devices:** IOS and Android System
- **APP Name:** PROBE PLUS
- **Connection:** 5.2 Bluetooth
- **Bluetooth Range:** Over 500 Ft (150 M) Open Space
- **Waterproof Grade of Probe:** IPX7
- **Temp Reading Frequency:** 1 Second/time
- **Temp Measurement Range:** 32°-212° F (0°-100° C)
- **Charging Time of Probe:** 30-40 Mins
- **Endurance Time of Probe:** 20-24 hours
- **Charging Time of Repeater:** 3-4 hours
- **Endurance Time of Repeater:** About 300 hours
- **Battery of Repeater:** 1000 mAH Li-Battery
- **Charging Method:** USB-Type C) / 5V, 0.5A

Download APP

Scan the following QR code to download and install the APP.



Warnings

1. PROBE PLUS is designed for use in meat(food).
2. The charger dock is non-waterproof, do not immerse it in water or other liquids.
3. To avoid damage the probe, insertion of the probe in the meat pass the Safety Notch in necessary.
4. PROBE PLUS probes are not dishwasher safe. Please hand wash with soap and water before and after each use.
5. PROBE PLUS is water resistant, not fully waterproof, do not submerge in water for long periods of time.
6. Please take caution with pointed tip of the probe.
7. The probe will be very hot during or just after a cooking. Do not touch with bare hands.
8. Do not submerge the probe in cold water after cooking. Wait until it has cooled down prior to washing.
9. The maximum temperature of the probe is 212° F(100° C). The internal temperature above 212° F(100° C) may potentially damage the probe.
10. The max temperature resistance of internal sensor is 185° F (85° C). To prolong the service life of the probe, it's better to keep the internal temperature below 185° F (85° C).
11. When cooking, ensure any part of the probe is not touching any HOT cooking surface.
12. PROBE PLUS product is not a toy, please keep it away from children.

13. When not in use, put the probe back into the dock, and store the product in a dry and cool place.

FCC STATEMENT

This device complies with part 15 of the FCC Rules. Operation is subject to the following two conditions:

1. This device may not cause harmful interference
2. This device must accept any interference received, including interference that may cause undesired operation.

Any Changes or modifications not expressly approved by the party responsible for compliance could void the user's authority to operate the equipment.

RF Exposure information

- The device has been evaluated to meet general RF exposure requirement.
- The device can be used in portable exposure condition without restriction.

IC Caution

This device complies with Industry Canada licence-exempt RSS standard(s). Operation is subject to the following two conditions:

1. This device may not cause interference.
2. This device must accept any interference, including interference that may cause undesired operation of the device.

Contacts

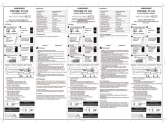
WSJ Product Ltd

- Eschborner LandstraBe 42-50, 60489 Frankfurt am Main, Germany
- **E-Mail:** info@wsj-product.com
- **Manufacturer:** Shenzhen Youchun Technology Co., Ltd.
- **Address:** Shenzhenshi S is very true. I just went to Ban Tian to pick up W U and she went to W U and Avenue South. Warehouse 101F-2 of No. 49 is
- **E-Mail:** youjihuics@163.com

WSJ Product Ltd

- Eschborner LandstraBe 42-50, 60489 Frankfurt am Main, Germany
- **E-Mail:** info@wsj-product.com
- **Hersteller:** Shenzhen Opportunity Exchange Co., Ltd.
- **Adresse:** Shenzhenshi S is very true. I just went to Ban Tian to pick up W U and she went to W U and Avenue South. Warehouse 101F-2 of No. 49 is
- **E-Mail:** youjihuics@163.com

Documents / Resources

	<p>HOMTRONICS HMT1 Probe Plus Smart Wireless Thermometer [pdf] User Manual HMT1 Probe Plus Smart Wireless Thermometer, HMT1 Probe Plus, Smart Wireless Thermometer, Wireless Thermometer, Thermometer</p>
---	---

References

- [User Manual](#)