

Homtime
Homtime HS1-PD
Bluetooth
Speaker With
Alarm Clock



Homtime HS1-PD Bluetooth Speaker With Alarm Clock Instruction Manual

[Home](#) » [Homtime](#) » Homtime HS1-PD Bluetooth Speaker With Alarm Clock Instruction Manual 

Contents

- [1 Homtime HS1-PD Bluetooth Speaker With Alarm Clock](#)
- [2 IMPORTANT SAFETY INSTRUCTIONS](#)
- [3 IMPORTANT SAFETY INSTRUCTIONS](#)
- [4 SPECIFICATIONS](#)
- [5 UNIT FEATURES & FUNCTIONS](#)
- [6 BASIC](#)
- [7 WIRELESS CHARGE](#)
- [8 CARE AND MAINTENANCE](#)
- [9 FAQ](#)
- [10 Documents / Resources](#)
 - [10.1 References](#)
- [11 Related Posts](#)

Homtime

Homtime HS1-PD Bluetooth Speaker With Alarm Clock



IMPORTANT SAFETY INSTRUCTIONS

KNOW THESE SAFETY SYMBOLS

CAUTION

RISK OF ELECTRIC SHOCK

DO NOT OPEN

CAUTION: TO REDUCE THE RISK OF ELECTRIC SHOCK, DO NOT REMOVE COVER (OR BACK). NO USER-SERVICEABLE PARTS INSIDE. REFER SERVICING TO QUALIFIED SERVICE PERSONNEL.

This 'bolt of lightning' indicates uninsulated material within your unit may cause an electric shock. For the safety of everyone in your household, please do not remove product covering. The 'exclamation mark' calls attention to features for which you should read the enclosed literature closely to prevent operating and maintenance problems. WARNING: To reduce the risk of fire or electric shock, this apparatus should not be exposed to rain or moisture and objects filled with liquids, such as vases, should not be placed on this apparatus.

CAUTION: To prevent electric shock, fully insert the plug.

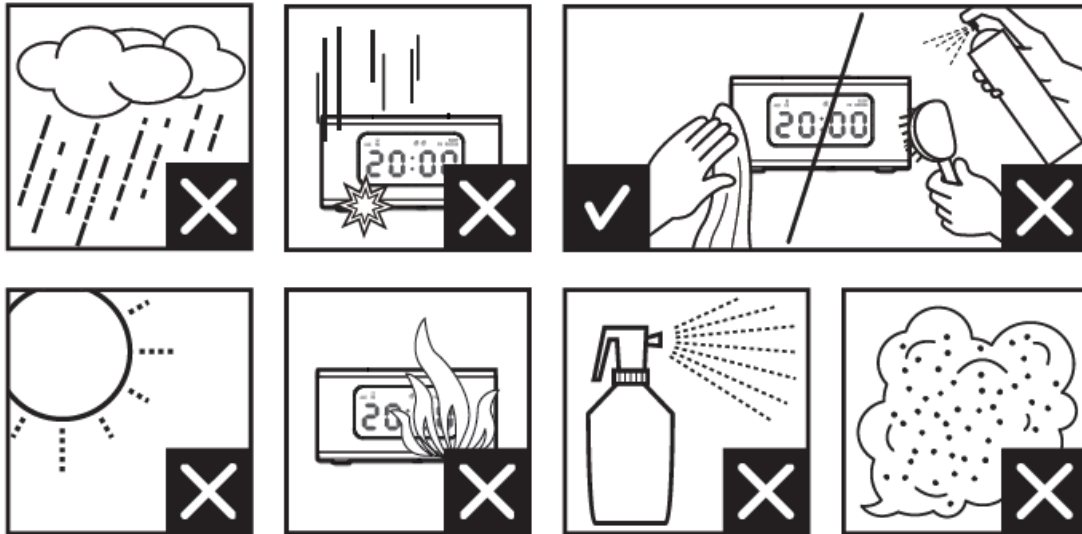
(For regions with polarized plugs: To prevent electric shock, match wide blade to wide slot.)

IMPORTANT SAFETY INSTRUCTIONS

- Read these instructions.
- Keep these instructions.
- Heed all warnings.
- Follow all instructions.
- Do not use this apparatus near water.
- Clean only with dry cloth.
- Do not block any ventilation openings. Install in accordance with the manufacturer's instructions.
- Do not install near any heat sources such as radiators, heat registers, stoves, or other apparatus (including

amplifiers) that produce heat.

- Protect the power cord from being walked on or pinched, particularly at plugs, convenience receptacles, and the point where they exit from the apparatus.
- Only use attachments/accessories specified by the manufacturer.
- Unplug this apparatus during lightning storms or when unused for long periods of time.



SPECIFICATIONS

- Bluetooth Specification: 5.1
- Bluetooth Profiles: HSP HFP A2DP and AVRCP
- Operating Distance: 10 meters Class II
- Output Power: 3W+3W
- Driver Unit: 4Ohm 3w 2in
- Frequency Range: 40Hz-20KHz
- S/N Ratio: 65dB
- Distortion Rate: 1%
- FM Frequency Range: 87.5-108MHz

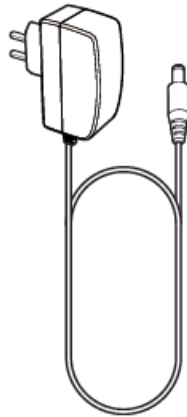
WHAT'S IN THE BOX



Unit



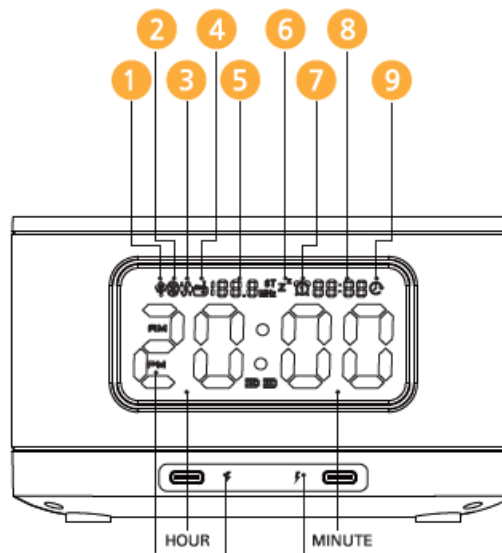
Manual



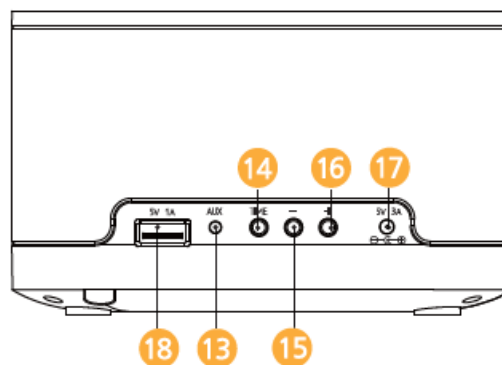
AC adapter

UNIT FEATURES & FUNCTIONS

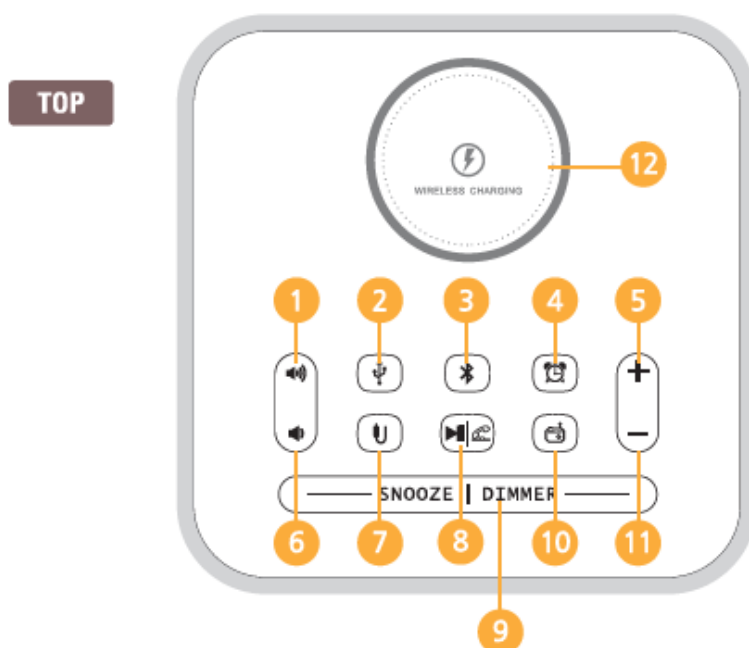
FRONT



REAR



1. FUNCTION
2. USB MODE
3. BLUETOOTH MODE
4. AUX MODE
5. FM RADIO MODE
6. FM FREQUENCY
7. SNOOZE
8. ALARM
9. ALARM TIME
10. SLEEP
11. AM/PM TYPE-C
12. PD CHARGE
13. AUX INPUT
14. TIME SETTING
15. TIME SETTING –
16. TIME SETTING +
17. POWER
18. USB PLAY / CHARGE



BUTTON	FUNCTION
1 VOL +	Volume up
2 USB MODE	USB Play Mode
3 BLUETOOTH	Bluetooth Mode
4 ALARM	Alarm Setting, On/Off
5 NEXT SONG/Adjusting Alarm Time	Skip Forwards Next Song/Adjusting Alarm Time
6 VOL-	Volume down
7 AUX IN	AUX IN Mode
8 PLAY/PAUSE, TALK, SCAN FM	Bluetooth&USB, Play/Pause, Answer the phone and Hang up, Auto scan FM station
9 SNOOZE, LED	SNOOZE, Display Brightness Level (4 Level : 1-2-3-4)
10 FM	FM Mode
11 BACKWARD SONG/Adjusting Alarm Time	Skip Backwards last song/Adjusting Alarm Time
12 Wireless Charging	Wireless Charging Station

BASIC

POWER ON

Connect the power cable into the jack on the back of HSI-PD labeled and then plug the power cable into the socket. The LCD display turns on.

SET TIME

Under any mode, press "TIE" to set time. Press '4" or to switch the Hour mode between 12-Hour and 24-Hour. Press "TIME" to confirm it.

Then Hour figure and MINUTE figure begin to flash. Press "+" or "—" to adjust the HOUR and press "TIE" to confirm it, then press "+" or "—" to adjust the MINUTE and press "TT" to confirm the setting. It exits the setting in 5 seconds if no operation on any key.

SET ALARM TIME

When alarm is off, press " " to set alarm time.

Press " + " or " - " to adjust alarm time. It will confirm and exit setting in 5 seconds if no operation on any key.

ALARM FUNCTION

1. When alarm is on, icon is flashing in the LCD and the alarm ring tone is becoming larger and larger. Press " " icon appears in the Snooze function, LCD. Alarm will be on again in 9-minute snooze.
2. TO Stop alarm, press " " or press and hold snooze. Alarm is one-off alarm.
3. The alarm can last for 30 minutes at most if no button is pressed

PLAY MUSIC FROM MOBILE VIA BLUETOOTH

OPERATION

Press to put on Bluetooth. Go to mobile phone, turn on Bluetooth and search Bluetooth devices. Connect "HS1-PD". When it is successfully paired, you will hear a sound of "DU". Play music from your mobile now. (When Bluetooth is connected, press " " or other mode key to switching it to other mode, Bluetooth will be OFF automatically and get disconnected with mobile. When switching it to Bluetooth mode again, connect "HS1-PD" manually or automatically.)

ANSWER THE PHONE

When a phone call is coming, press " " to answer the phone.

HANG UP

Press " " to hang up when having a phone call.

PLAY MUSIC

When playing music, press " " to pause the music. Press " " to skip backwards last song;

Press "+ " to skip forwards next song.

FM RADIO OPERATION " " to put FM Radio on, appears

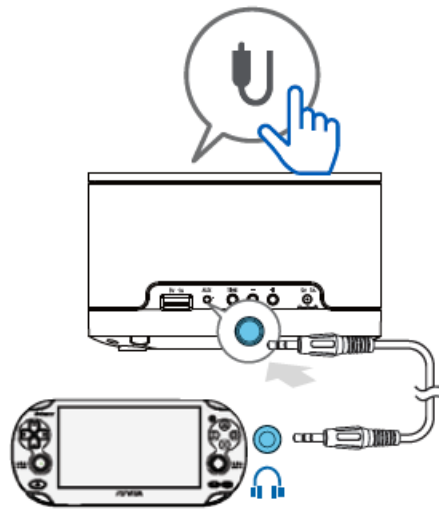
Press "

on the LCD display. Press and hold " " to auto-scan radio station and store the scanned stations accordingly. The frequency starts from 87.5MHz to 108MHz and skips at every 0.1 MHz in scanning process. Once catching a station, it stops a second and store it, then continues the auto-scanning. When it scans from 87.5MHz to 108MHz, it will stop scan automatically. Press " " or " " to select the station.

PLAY MUSIC FROM AUX JACK

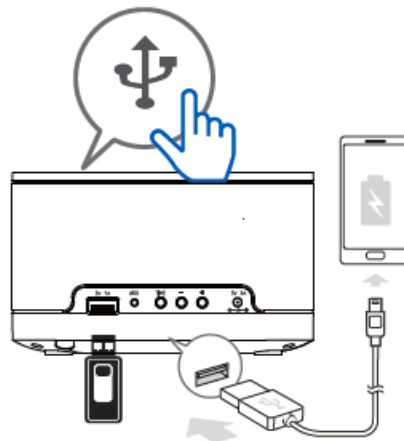
Press "(u" to put AUX IN on, "a" appears on the LCD display. Plug in the 3.5mm audio cable into the AUX IN jack.

Play music now.



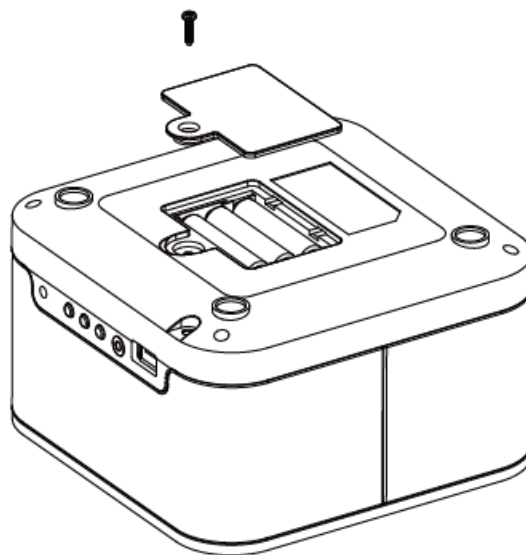
USB PLAYBACK & CHARGING

Supports USB memory music playback and enables fast charging of smartphones and other digital devices.



Back-up the lithium battery

The 3.6V NiMH battery is to retain the memory of time in case of a power failure.



Infrared remote control(Optional)

Install the battery: Unscrew the back cover of the remote control, open the screws, install 3 pieces AAA battery, lock the screw and screw the back cover. Sync time with phone: Unscrew the back cover of the remote control, connect the remote control's lightning connector to the iPhone interface. In this way, the time will be synced with iPhone. Sync time with the reomte control: Align the remote control with the alarm screen, press the sync button on the remote control, the time of the remote control will be transmitted to the alarm clock and turn off the alarm, reset the alarm.

WIRELESS CHARGE

CAUTION

- Wireless charging covers are sold separately.
- Do not place the wireless charging cover solely on the wireless charger. Doing so may overheat the wireless charger and cause a fire. It may also result in serious burn or device malfunction.
- To charge a mobile device that does not have a built-in wireless charging coil, attach a wireless charging cover to the mobile device. Then, place the mobile device on the wireless charger.
- Do not place foreign materials, such as metal objects, magnets, and magnetic stripe cards, between the mobile device and the wireless charger. The mobile device may not charge properly or may be damaged due to overheating.
- When the mobile device is fully charged, remove it from the wireless charger.
- When the mobile device is not placed on the charging surface properly, or depending on the location of the mobile device's wireless charging coil, your mobile device may not charge properly.
- Depending on the location of the mobile device's wireless charging coil, your mobile device may not charge properly.
- Wireless charging may not work properly if you have attached a thick case to your mobile device. If your case is thick, remove it before placing your mobile device on the wireless charger.
- If you use the wireless charger in areas with weak network signals, you may lose network reception.
- If you connect a charger to the mobile device during wireless charging, the wireless charging feature will be unavailable.
- The wireless charger is compatible with Wireless Power Consortium (WPC) certified devices.

CARE AND MAINTENANCE

Read the following recommendations before using the unit . Following these you will be able to enjoy our product for many years.

1. Keep the product dry and don't put it in the damp place to avoid the product's internal circuit being affected.
2. Keep the product away from direct sunlight or hot places. High temperature will shorten the life of electronic devices, destroy the battery or distort certain plastic parts.
3. Don't expose the product to cold areas as it may damage the internal circuit board.
4. Don't try to disassemble the product as it may get damaged if you are not a professional.
5. Don't let the product fall down onto the floor or other hard surfaces. The internal circuit might get damaged.
6. Don't use intensive chemical products or detergents to clean the product
7. Don't scratch the surface with sharp things.

No response from the clock radio

Disconnect and reconnect the power cable, then turn on the clock radio again.

NOTICE

Clock/a/arm setting erased

1. Power has been interrupted or the power plug has been disconnected.
2. Reset the c/ock/a/arm.
3. Backup battery was low, so please charge it.

* Please comply with the actual product if there is any discrepancy between the product and the content of the manual

FAQ

What to do when there is no sound when making a call with the unit?

Ensure the unit connects well with Bluetooth mobile phone Ensure the volume has already been properly adjusted Make sure the audio input of car audio system is adjusted to AUX.

What to do when my mobile phone can not search and find the unit ?

If the unit is not in pairing mode, your mobile phone can't find it. Please make sure the unit is in pairing mode and in the effective working range.

What to do when the voice is not clear?

Ensure your mobile phone is in strong-signal areas. Ensure the unit is in the effective working range.

How far is the effective range between the unit and Bluetooth mobile phone?

According to the Bluetooth standard, the max. controllable range of Class II handstree kit is 10 meters. But it varies with different environment and paired mobile phone.

Poor radio reception?

Keep the clock radio away from other electronic devices to avoid radio interference. Fully extend and adjust the position of the FM antenna.



[Homtime HS1-PD Bluetooth Speaker With Alarm Clock](#) [pdf] Instruction Manual
HS1-PD, HS1-PD Bluetooth Speaker With Alarm Clock, Bluetooth Speaker With Alarm Clock, S
peaker With Alarm Clock, Alarm Clock

References

- [User Manual](#)

[Manuals+](#), [Privacy Policy](#)

This website is an independent publication and is neither affiliated with nor endorsed by any of the trademark owners. The "Bluetooth®" word mark and logos are registered trademarks owned by Bluetooth SIG, Inc. The "Wi-Fi®" word mark and logos are registered trademarks owned by the Wi-Fi Alliance. Any use of these marks on this website does not imply any affiliation with or endorsement.