

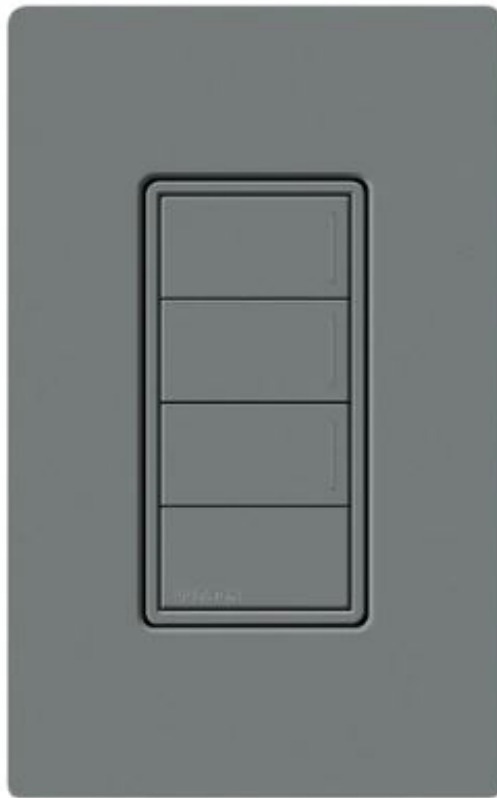
# HOMEWORKS SUNNATA HRST-W2B Keypad Instruction Manual

[Home](#) » [HOMEWORKS](#) » HOMEWORKS SUNNATA HRST-W2B Keypad Instruction Manual 

## Contents

- [1 HOMEWORKS SUNNATA HRST-W2B Keypad](#)
- [2 Included Components](#)
- [3 Help](#)
- [4 Turn power OFF at circuit breaker](#)
- [5 Prepare wires](#)
- [6 IMPORTANT NOTES](#)
- [7 Wire control](#)
- [8 Mount wall plate adapter](#)
- [9 Mount dimmer and attach wall plate](#)
- [10 Turn power ON at circuit breaker](#)
- [11 System setup](#)
- [12 Troubleshooting](#)
- [13 Return to Factory Settings](#)
- [14 FCC/IC/IFT Information](#)
- [15 Documents / Resources](#)
  - [15.1 References](#)
- [16 Related Posts](#)

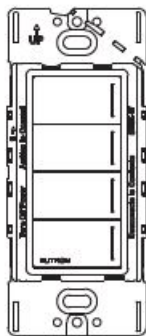




**Please read before installing.**

HRST-W, HRST-W2B, HRST-W3RL & HRST-W4B 120–277 V~ 50 / 60 Hz

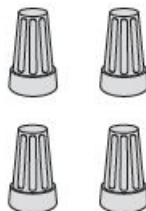
### Included Components



Keypad



Mounting Screws

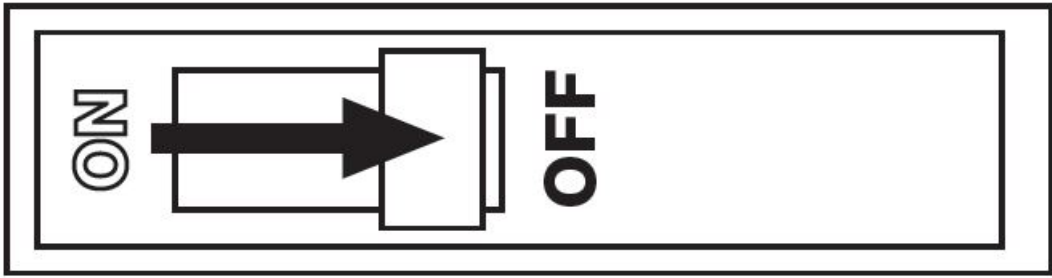


Wire Nut  
Yellow (x4)

### Help

HomeWorks Support Center For additional support in installing, programming, and troubleshooting  
[lutron.com/HWsupport](http://lutron.com/HWsupport)

Turn power OFF at circuit breaker



**WARNING:** ELECTRIC SHOCK HAZARD. May result in Serious Injury or Death. Turn off power at circuit breaker or fuse before installing.

Prepare wires

When making wire connections, follow the recommended strip lengths and combinations for the supplied wire connectors. Note: Wire connectors provided are suitable for copper wire only.

AWG	
12 & 14 AWG (2.5 & 1.5 mm2)	3/8 in (10 mm)
18 AWG (0.75 mm2)	7/16 in (11 mm)

IMPORTANT NOTES

**Codes:**  
Install in accordance with all local and national electrical codes.

**Environment:**  
Ambient operating temperature: 32 °F to 104 °F (0 °C to 40 °C), 0 to 90% humidity, non-condensing. Indoor use only.

**Wallplates:**  
Use only Lutron wallplates with these keypads. The mechanical design of the keypad MAY NOT be compatible with non-Lutron wallplates. Non-Lutron wallplates MAY NOT sit flush against the wall. Claro and Satin Colors wallplates are designed for best color match and clean aesthetic appearance. Do not paint controls, buttons, or wallplates.

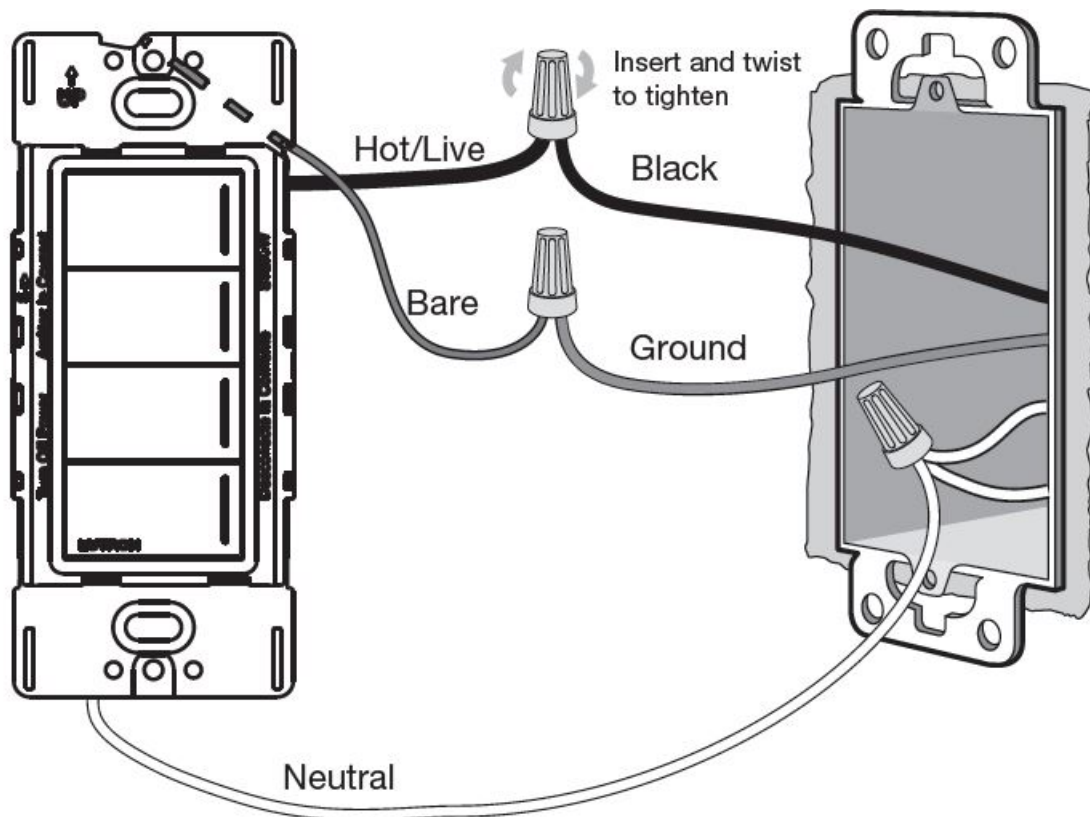
**Cleaning:**  
For disinfecting keypad, please refer to App Note #758 (048758). See HomeWorks Support Center link in Help Section.

**Wallboxes:**  
All keypads require a U.S. wallbox. 3 ` in (89 mm) deep recommended, 2 1 in (57 mm) deep minimum.

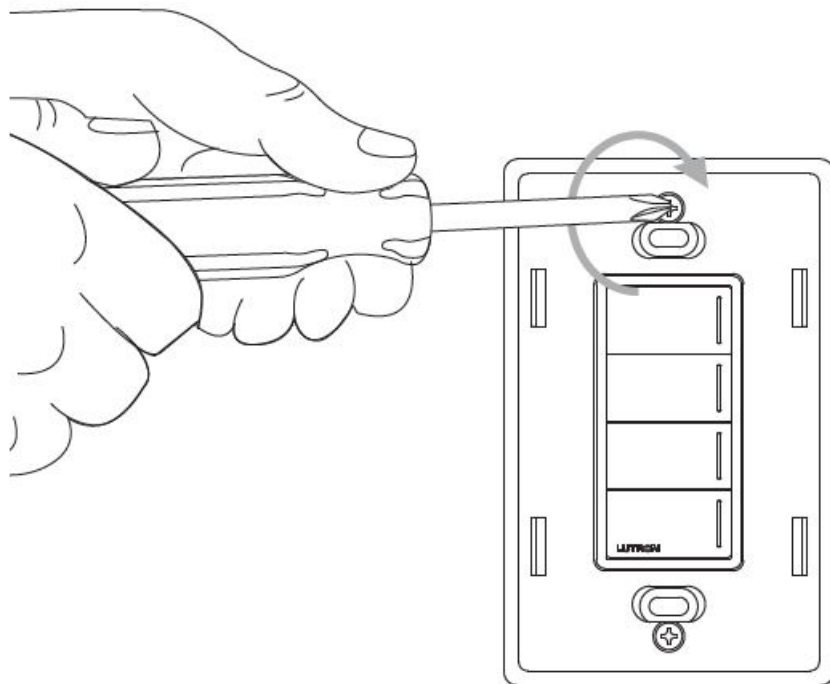
**RF Device Placement:**  
For reliable performance in a system, this device should be placed within 25 ft (7.6 m) of two additional compatible wireless devices, such as HomeWorks Sunnata products and the HomeWorks Processor. For more information

and a full list of compatible wireless devices please refer to the Wireless Setup guide, , which can be found in the HomeWorks Support Center link in the HELP Section. System Programming: Programming and activation (addressing) must be accomplished through the HomeWorks software. Raise / Lower Default: Raise / lower the last button pressed.

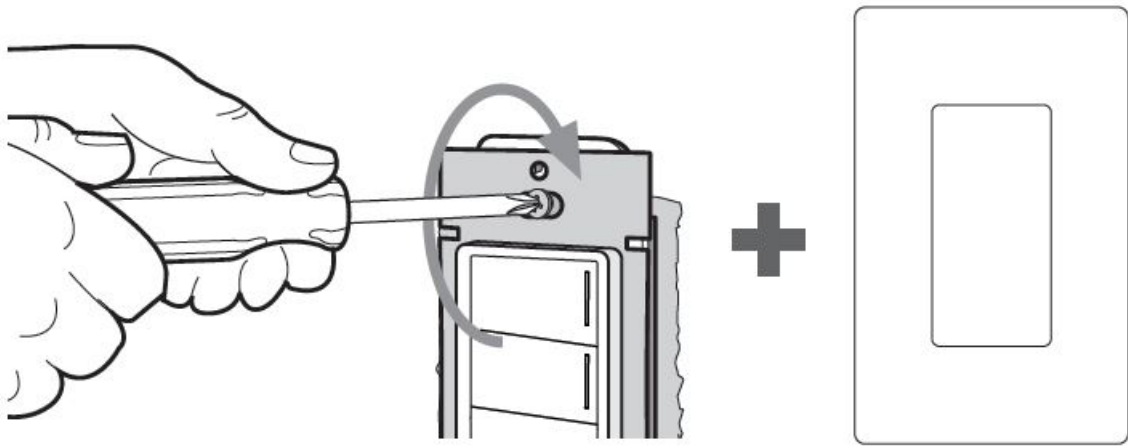
## Wire control



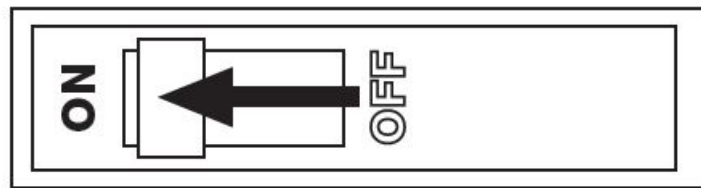
## Mount wall plate adapter



## Mount dimmer and attach wall plate



**Turn power ON at circuit breaker**



## **System setup**

This keypad must be used in a HomeWorks system with a main repeater for control of dimmers, switches, and shades. Use the HomeWorks programming software to setup the system (training required to access the software).

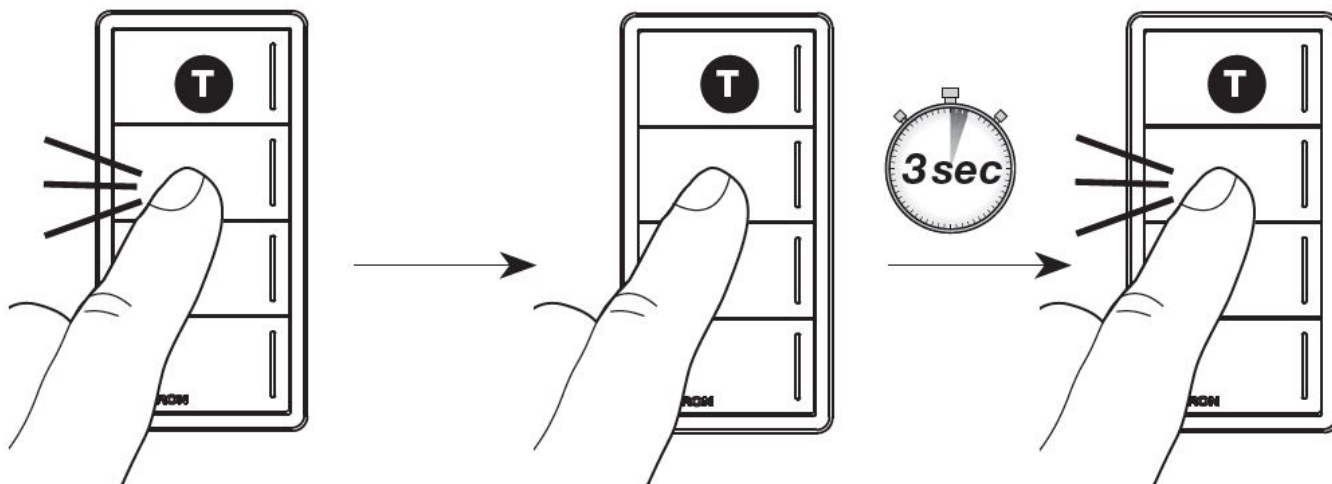
## **Troubleshooting**

Symptom	Cause	Action
LEDs on the keypad don't light up when buttons on it are pressed.	Power not present at keypad	Circuit breaker OFF. Turn ON breaker
	Incorrect wiring	Wire the keypad according to the Installation section
A specific dimmer, switch or shade / drapery is not controlled when a button is pressed on the keypad.	The dimmer, switch or shade / drapery is not assigned to the keypad	Refer to the HomeWorks programming software and ensure the device is assigned to the keypad. Perform a transfer and make sure it is successful
	Failure has occurred on the lamp(s) controlled by the dimmer/switch	Replace the lamp(s)
	There is no power to the dimmer, switch, shade/drapery	Ensure that the device is powered and that the FASS switch is pushed in
	Devices are out of range	Ensure this device is placed within 25 ft (7.6 m) of two additional compatible wireless devices, such as HomeWorks Sunnata products and the HomeWorks processor
Dimmer, switch or shade / drapery does not go to the desired level or position when a button on the keypad is pressed.	The button was not programmed correctly	Refer to the HomeWorks programming software and ensure the device is assigned to the keypad. Perform a transfer and make sure it is successful
	Devices are out of range	Ensure this device is placed within 25 ft (7.6 m) of two additional compatible wireless devices, such as HomeWorks Sunnata products and the HomeWorks processor
All LEDs on the keypad flash when any button is pressed.	The keypad is in the Factory Settings mode and has not been configured to work in a system	Refer to the HomeWorks programming software and ensure the device is assigned to that keypad.  Perform a transfer and make sure it is successful

## Return to Factory Settings

**Note:** Returning a keypad to its factory settings will remove the keypad from the system and erase all programming.

1. Step 1: Triple tap any button on the keypad (except raise / lower). DO NOT release after third tap.
2. Step 2: Keep the button pressed on the third tap until all the status LEDs start to flash slowly (approximately 3 seconds).
3. Step 3: Immediately release the button and triple tap the button again. The status LEDs on the keypad will flash quickly. The keypad has now been returned to its factory settings.



## FCC/IC/IFT Information

1. This device may not cause interference, and
2. This device must accept any interference, including interference that may cause undesired operation.

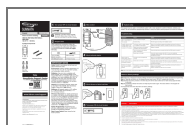
Modifications not expressly approved by Lutron Electronics Co., Inc. could void the user's authority to operate this equipment.

**NOTE:** This equipment has been tested and found to comply with the limits for a Class B digital device, pursuant to part 15 of the FCC Rules. These limits are designed to provide reasonable protection against harmful interference in a residential installation. This equipment generates, uses and can radiate radio frequency energy and, if not installed and used in accordance with the instructions, may cause harmful interference to radio communications. However, there is no guarantee that interference will not occur in a particular installation. If this equipment does cause harmful interference to radio or television reception, which can be determined by turning the equipment off and on, the user is encouraged to try to correct the interference by one or more of the following measures:

- Reorient or relocate the receiving antenna
- Increase the separation between the equipment and receiver
- Connect the equipment into an outlet on a circuit different from that to which the receiver is connected
- Consult the dealer or an experienced radio/TV technician for help.



This equipment complies with FCC radiation exposure limits set forth for an uncontrolled environment. The user should avoid prolonged exposure within 20cm of the antenna, which may exceed FCC radio frequency exposure limits. This Class B digital apparatus complies with Canadian ICES-003.




## Documents / Resources



[HOMEWORKS SUNNATA HRST-W2B Keypad](#) [pdf] Instruction Manual  
0136, JPZ0136, HRST-W, HRST-W2B, HRST-W3RL, HRST-W4B, SUNNATA HRST-W2B Keyp  
ad, SUNNATA Keypad

## References

-  [Lutron Support Center](#)
-  [Application Notes | RadioRA 3 | Lutron](#)

-  [lutron.com/fcc-ic](https://lutron.com/fcc-ic)
-  [Product Selection Page](#)
-  [Lutron Support Center | Lutron](#)

Manuals+.