

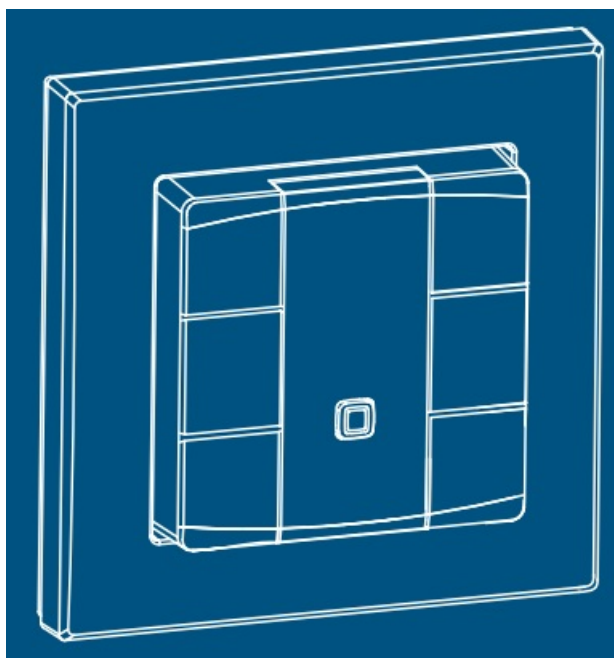


## homematic IP HmIPW-WRC6-A Wired Wall Mount Remote Control Instruction Manual

[Home](#) » [Homematic IP](#) » homematic IP HmIPW-WRC6-A Wired Wall Mount Remote Control Instruction Manual



homematic 



Wired Wall-mount Remote Control – 6 buttons, anthracite  
Installation and brief instructions

**Proceed to the detailed manual**



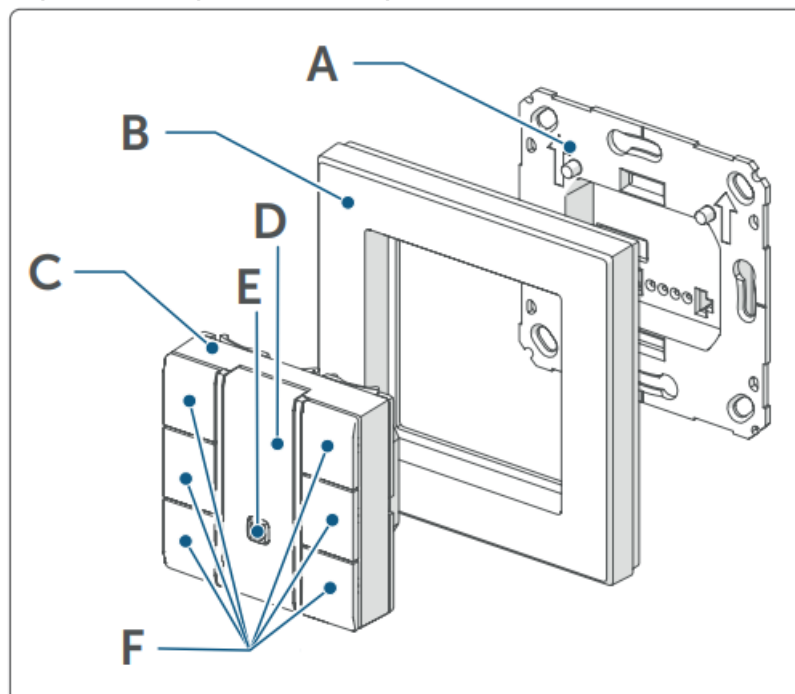
[https://www.homematic-ip.com/downloads/download/homematic\\_ip/bda/HmIPW-WRC6\\_UM\\_web.pdf](https://www.homematic-ip.com/downloads/download/homematic_ip/bda/HmIPW-WRC6_UM_web.pdf)

## Contents

- 1 Device overview
- 2 A Mounting plate B Clip-on frame C Electronic unit D Labelling field F Button (channel 1-6) and LED (channel 7-13) Installation
- 3 Mounting
- 4 Set-up system
- 5 Function
- 6 Installation instructions
- 7 Technical specifications
- 8 Documents / Resources

## Device overview

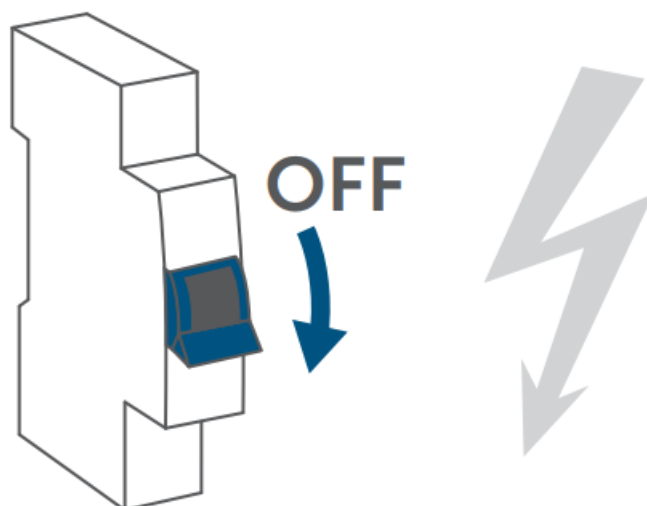
- A Mounting plate
- B Clip-on frame
- C Electronic unit
- D Labelling field
- F Button (channel 1-6) and LED (channel 7-13)



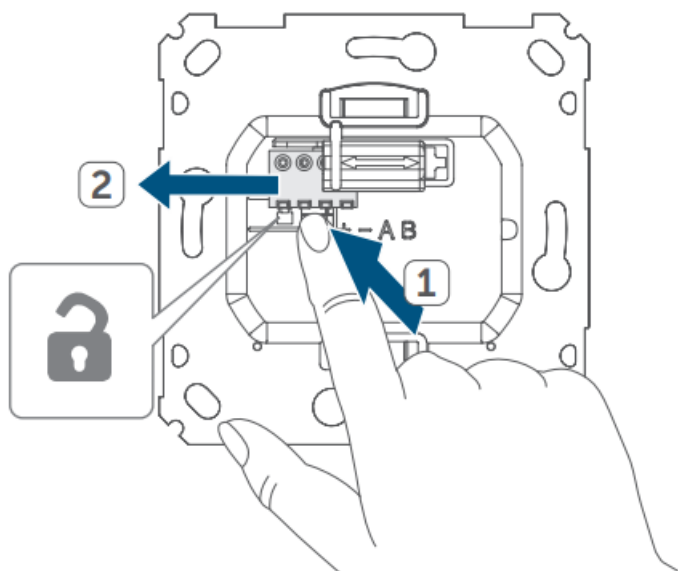
## Installation

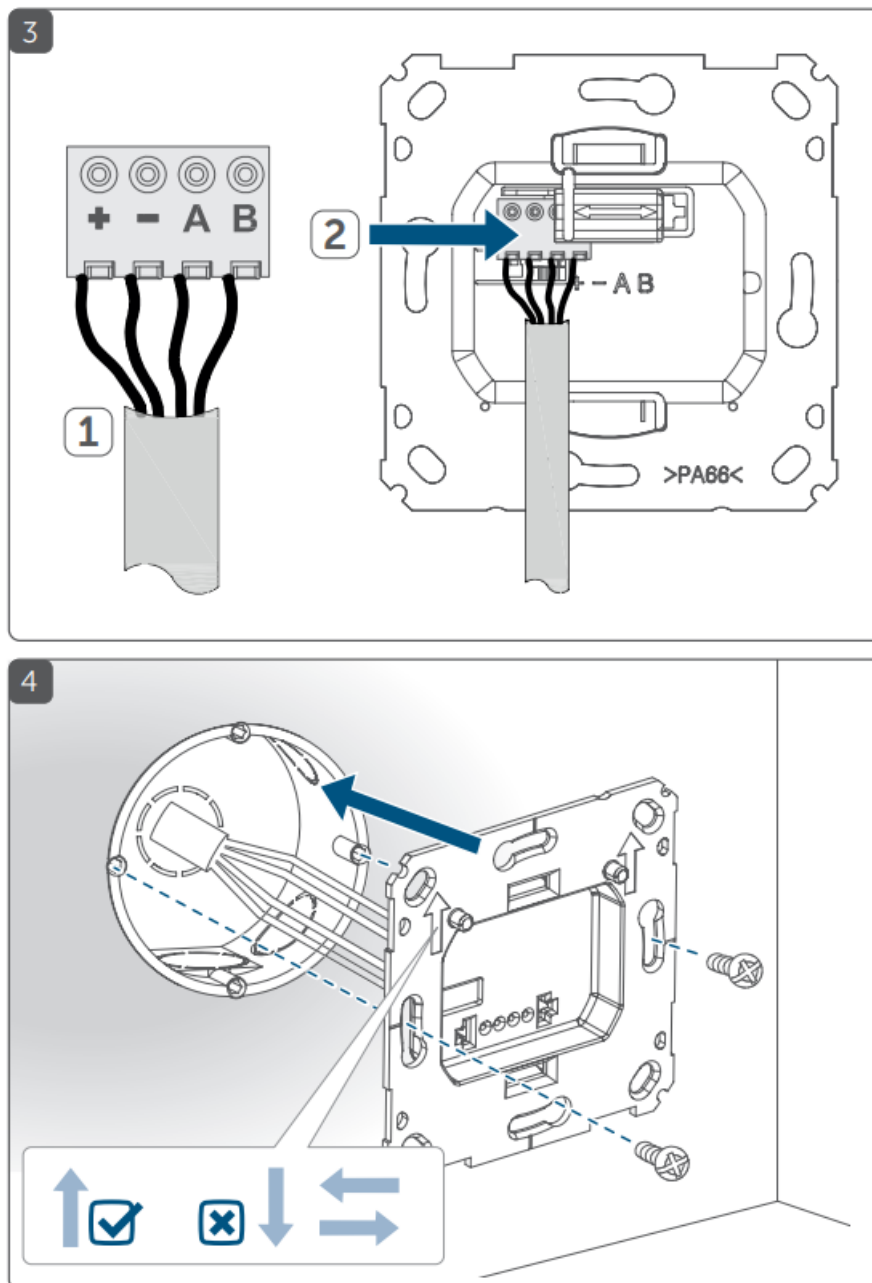
Please observe the safety instructions on the back side!

1



2

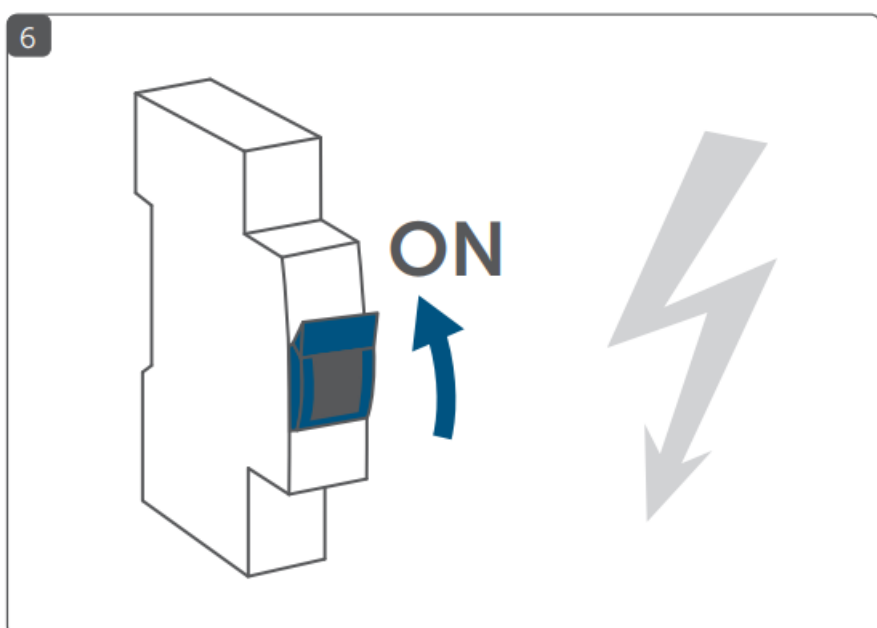
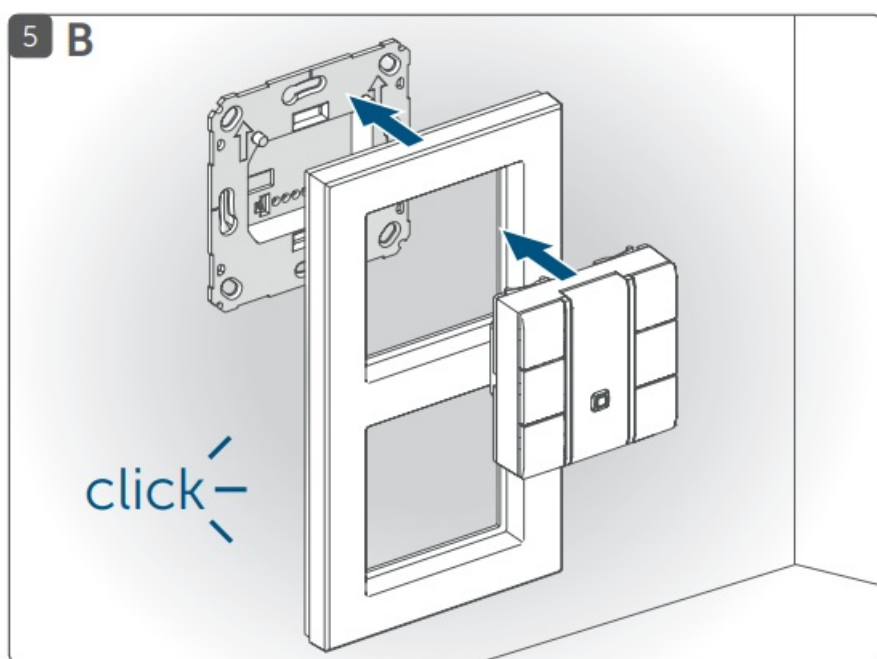
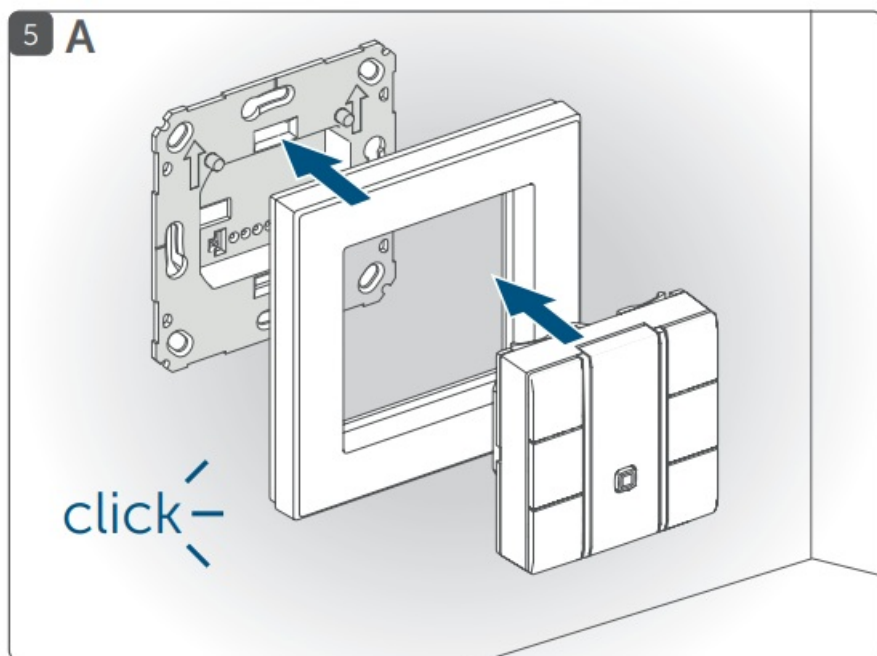




## Mounting

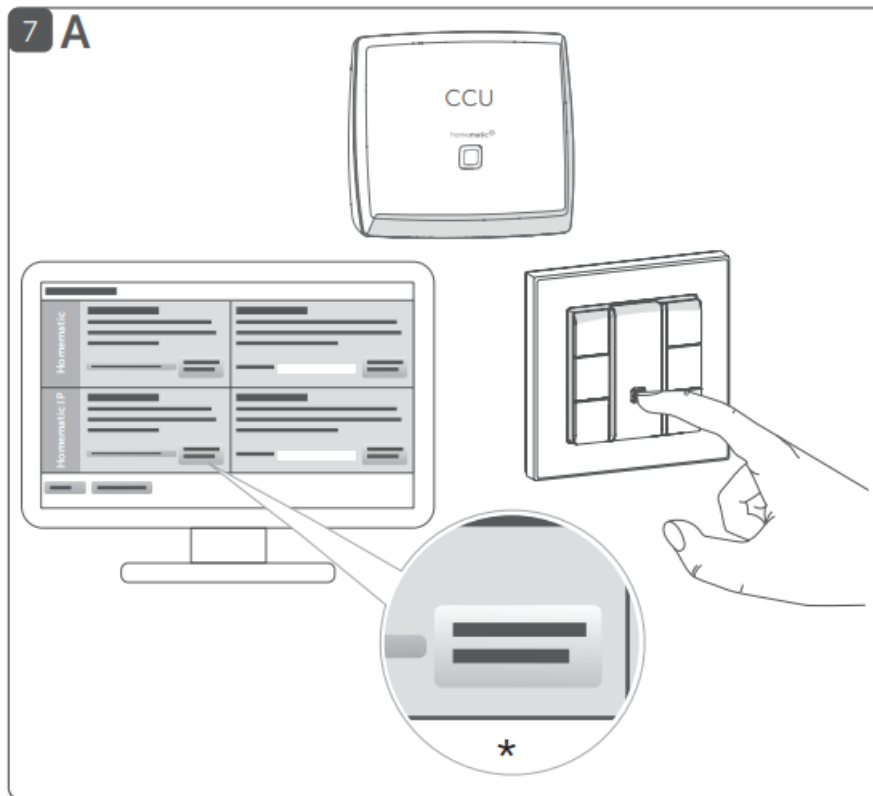
A With supplied clip-on frame

B In (multi-gang) frame of other manufacturers

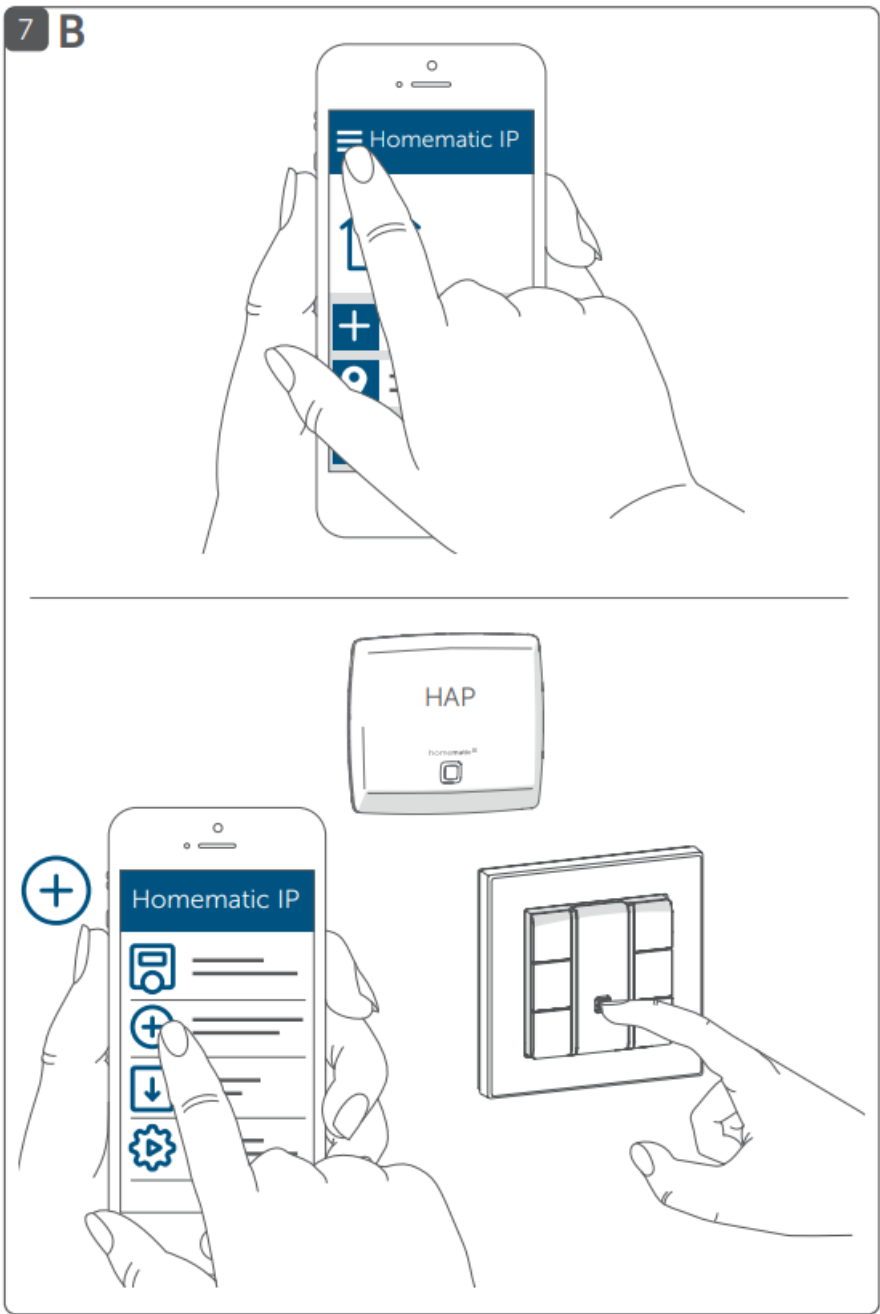


Connect device to:

- A Central Control Unit
- B Homematic IP Access Point (Cloud)



Teach-in HmIP device



**Set-up system**

8 **A**






8 **B**



Detailed manuals for...



Wired System	Homematic IP App	Web UI Software
		
<a href="https://www.homematic-ip.com/downloads/download/handbuecher/HmIPW-Systemhandbuch.pdf">https://www.homematic-ip.com/downloads/download/handbuecher/HmIPW-Systemhandbuch.pdf</a>	<a href="https://www.homematic-ip.com/downloads/download/handbuecher/Homematic_IP-Anwenderhandbuch.pdf">https://www.homematic-ip.com/downloads/download/handbuecher/Homematic_IP-Anwenderhandbuch.pdf</a>	<a href="https://www.homematic-ip.com/downloads/download/handbuecher/WebUI_Handbuch_eQ-3.pdf">https://www.homematic-ip.com/downloads/download/handbuecher/WebUI_Handbuch_eQ-3.pdf</a>

## Function

This device is part of the Homematic IP smart home system and works with the Homematic IP radio protocol. All devices of the Homematic IP system can be configured comfortably and individually with the CCU3 user interface or flexibly with the smartphone app in connection with the Homematic IP cloud.

The Homematic IP Wired Wall-mount Remote Control offers three pairs of freely configurable buttons and can be used flexibly in the Homematic IP Wired system to control devices and functions. At the push of a button it is possible to switch lights on or off, raise or lower shutters or switch to activate/deactivate the protection mode, for example.

A status LED is integrated next to each of the six buttons, which can light up, flash or pulse in seven different colours. The LEDs can be used to indicate a wide range of system states, such as the current protection mode, lights switched on or open windows.

The wall-mount remote control is mounted to a free flush-mounted box using the mounting plate. As an alternative to mounting with the supplied removable frame, the remote control can be integrated into existing switch series from other manufacturers. All current technical documents and updates are provided at [www.homematic-ip.com](http://www.homematic-ip.com).

## Installation instructions



Since the bus is powered by the Homematic IP Wired Access Point (HmIPW-DRAP), you must first set-up a Homematic IP Wired Access Point (HmIPW-DRAP) to enable power supply for the device. For further information, please refer to the operating manual of the corresponding Wired Access Points.



Please note the insulation stripping length of the conductor to be connected, indicated on the device.



Permitted cable cross sections for connecting to the device are: Rigid cable: 0.12-0.50 mm<sup>2</sup>



For reasons of electrical safety, only the following cables must be used for connecting to the Homematic IP wired bus:

- Telephone cable J-Y(ST)Y with 2 x 2 x 0.8 (= 0.5 mm<sup>2</sup>) or 4 x 2 x 0.8 (= 0.5 mm<sup>2</sup>), shielded, TP
- Ethernet installation cable S/FUTP, Type Cat5e or higher with 2 x 2 x AWG22 (= 0.34 mm<sup>2</sup>) or 4 x 2 x AWG22 (= 0.34 mm<sup>2</sup>), shielded, TP

The shield (continuity wire) must be connected to “–” (=GND) at the bus connection of the Wired Access Point (HmIPW-DRAP). The shield may not be connected to the device.



Please note! Only to be installed by persons with the relevant electro-technical knowledge and experience!\*



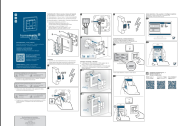
Incorrect installation can put your own life at risk and the lives of other users of the electrical system. Incorrect installation also means that you are running the risk of serious damage to property, e.g. because of a fire. You may be personally liable in the event of injuries or damage to property. Contact an electrical installer!

## Technical specifications

Device short name	HmIPW-WRC6-A
Supply voltage	24 VDC, +5 % -20 %, SELV
Current consumption (max.)	40 mA
Standby power consumption	45 mW
Cable type and cross section	Rigid cable, 0.12-0.50 mm <sup>2</sup>
Installation	only in normal commercial switch boxes
Degree of protection	(device boxes) in accordance with DIN 49073-1.
Protection class	DIN 49073-1
Ambient temperature	IP20
Dimensions (W x H x D)	III
Without frame	-5 to +40 °C
Including frame	71 x 71 x 40 mm
Weight	85 x 85 x 40 mm
	68 g

Subject to technical changes

## Documents / Resources



[homematic IP HmIPW-WRC6-A Wired Wall Mount Remote Control](#) [pdf] Instruction Manual  
HmIPW-WRC6-A Wired Wall Mount Remote Control, HmIPW-WRC6-A, Wired Wall Mount Remote Control, Mount Remote Control, Remote Control