



homematic IP HMIP-WRC2-A Wall Mount Remote Control Button Instruction Manual

[Home](#) » [Homematic IP](#) » homematic IP HMIP-WRC2-A Wall Mount Remote Control Button Instruction Manual 

Contents

- [1 homematic IP HMIP-WRC2-A Wall Mount Remote Control Button](#)
- [2 Information about this manual](#)
- [3 Hazard information](#)
- [4 Function and device overview](#)
- [5 General system information](#)
- [6 Start-up](#)
- [7 Replacing batteries](#)
- [8 Troubleshooting](#)
- [9 Restore factory settings](#)
- [10 Maintenance and cleaning](#)
- [11 General information about radio operation](#)
- [12 Technical specifications](#)
- [13 Documents / Resources](#)
 - [13.1 References](#)



homematic IP HMIP-WRC2-A Wall Mount Remote Control Button



Documentation © 2023 eQ-3 AG, Germany All rights reserved. Translation from the original version in German. This manual may not be reproduced in any format, either in whole or in part, nor may it be duplicated or edited by electronic, mechanical or chemical means, without the written consent of the publisher. Typographical and printing errors cannot be excluded. However, the information contained in this manual is reviewed regularly and any necessary corrections will be implemented in the next edition. We accept no liability for technical or typographical errors or the consequences thereof. All trademarks and industrial property rights are acknowledged. Printed in Hong Kong Changes may be made without prior notice as a result of technical advances. 159881A0A Version 1.0 (04/2023)

Information about this manual

Please read this manual carefully before beginning operation with your Homematic IP components. Keep the manual so you can refer to it at a later date if you need to. If you hand over the device to other persons for use, please hand over this manual as well.

- **Attention!**

This indicates a hazard.

- **Note.**

This section contains important additional information!

Hazard information

- Do not open the device. It does not contain any parts that can be maintained by the user. In the event of an error, please have the device checked by an expert. For safety and licensing reasons (CE), unauthorized change and/or modification of the device is not permitted.
- The device may only be operated in dry and dust-free environment and must be protected from the effects of moisture, vibrations, solar or other methods of heat radiation, cold and mechanical loads.
- The device is not a toy; do not allow children to play with it. Do not leave packaging material lying around.

Plastic films/bags, pieces of polystyrene, etc. can be dangerous in the hands of a child.

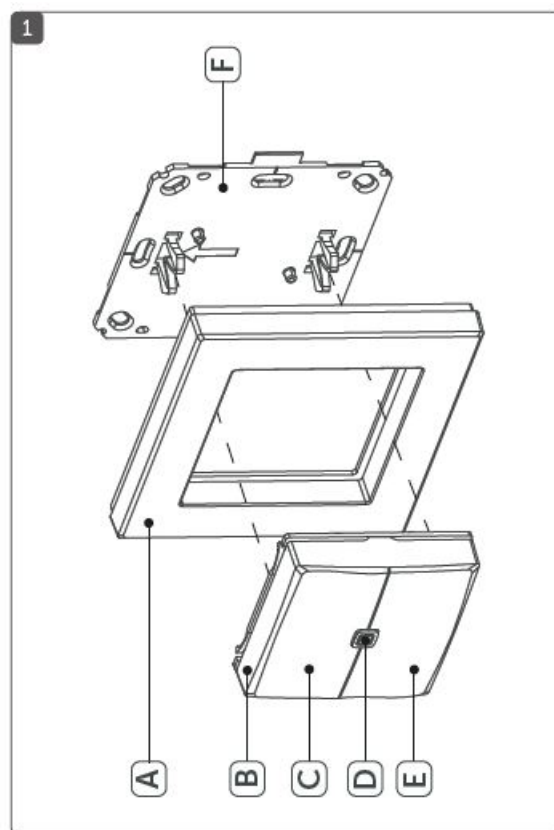
- We do not assume any liability for damage to property or personal injury caused by improper use or the failure to observe the hazard information. In such cases any claim under warranty is extinguished! For consequential damages, we assume no liability!
- The device may only be operated within residential buildings.
- Using the device for any purpose other than that described in this operating manual does not fall within the scope of intended use and shall invalidate any warranty or liability.

Function and device overview

The Homematic IP Wall-mount Remote Control – 2 buttons offers flexible use via two channels for central control of Homematic IP devices and functions. At just the push of a button, e.g. the eco mode of the heating system can be activated or lights can be switched on or off.

Thanks to battery operation, the device is highly flexible where mounting and selecting a mounting location are concerned. The device is mounted and removed very easily with the supplied clip-on frame using screws or adhesive strips. It is compatible with a number of different surfaces including furniture, brick walls, tiles or glass. It is also possible to integrate the wall-mount remote control into existing brand switch systems.

Device overview (see figure 1)



- (A) Clip-on frame
- (B) Remote control (electronic unit)
- (C) Channel 1 ("On" or eco mode)
- (D) System button (teach-in button and LED)
- (E) Channel 2 („Off“ or automatic mode)
- (F) Mounting plate

General system information

This device is part of the Homematic IP smart home system and works with the Homematic IP radio protocol. All devices of the system can be configured comfortably and individually with the Homematic IP smartphone app. Alternatively, you can operate the Homematic IP devices via the Homematic Central Control Unit CCU3 or in connection with various partner solutions. The available functions provided by the system in combination with other components are described in the Homematic IP User Guide. All current technical documents and updates are provided at www.eQ-3.de.

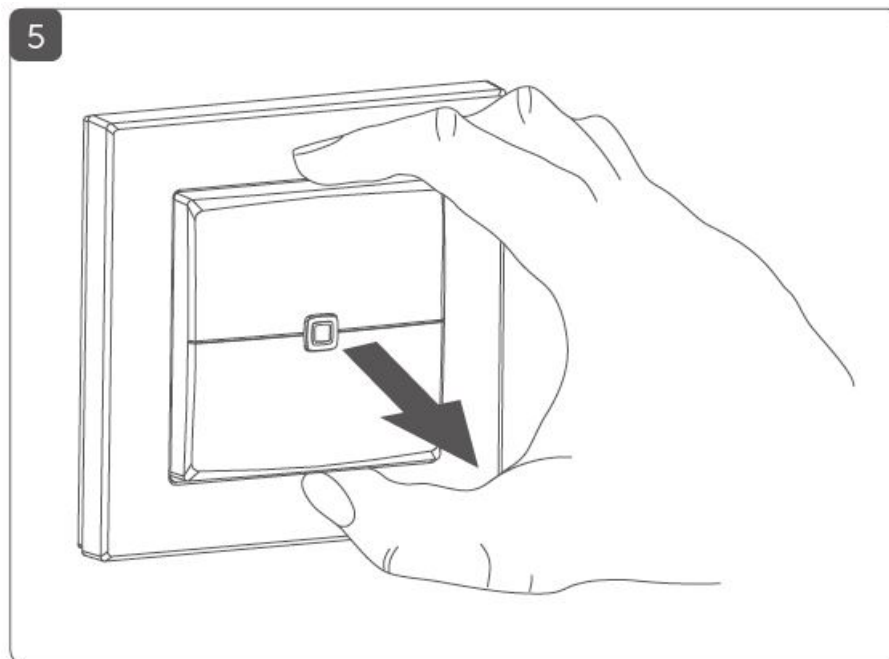
Start-up

Teaching-in

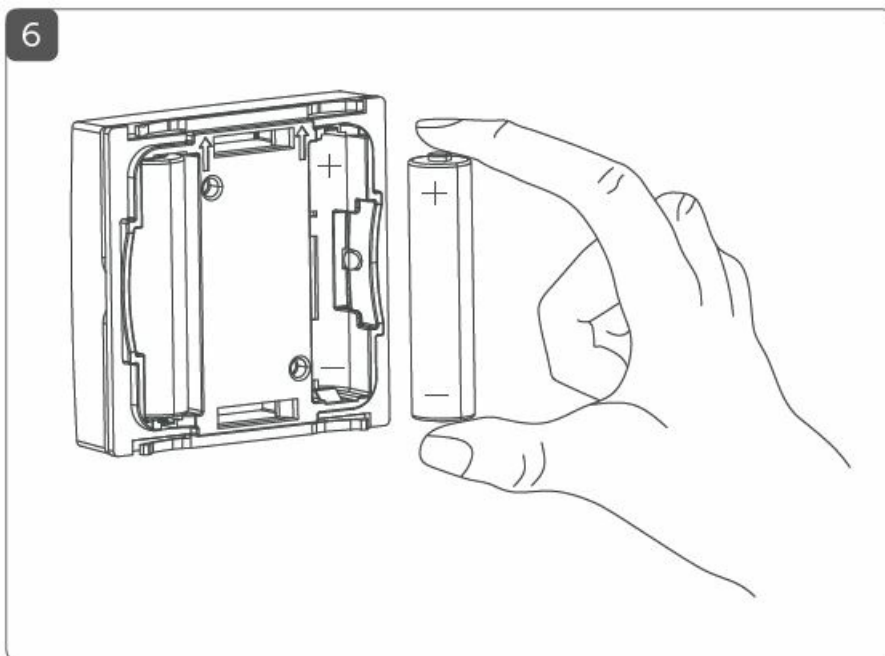
Please read this entire section before starting the teach-in procedure. First, set up your Homematic IP Access Point via the Homematic IP app to enable operation of other Homematic IP devices within your system. For further information, please refer to the operating manual of the Access Point. To integrate the wall-mount remote control into your system and enable it to communicate with other Homematic IP devices, you must teach the device to your Homematic IP Access Point first.

To teach-in the wall-mount remote control, please proceed as follows:

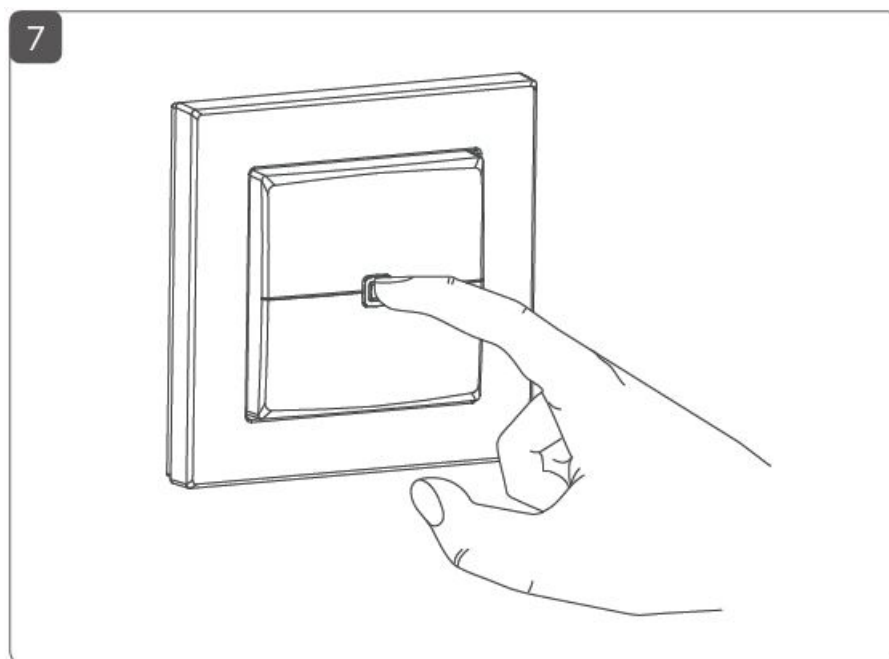
- Open the Homematic IP app on your smartphone.
- Select the menu item "Teach-in device".
- To remove the remote control (B) from the frame, take hold of the sides of the remote control and pull it out (see figure 5).



- Turn over the remote control.
- Insert two new 1.5 V LR03/micro/AAA batteries into the battery compartment, making sure that you insert them the right way round (see figure 6). Teach-in mode remains activated for 3 minutes.



You can manually start the teach-in mode for another 3 minutes by pressing the system button (D) shortly (see figure 7).



- Your device will automatically appear in the Homematic IP app.
- To confirm, please enter the last four digits of the device number (SGTIN) in your app or scan the QR code. Therefore, please see the sticker supplied or attached to the device.
- Please wait until the teach-in is completed.
- If teaching-in was successful, the LED lights up green. The device is now ready for use.
- If the LED lights up red, please try again.
- Select the desired solution for your device.
- In the app, give the device a name (there is no allocation to a room required for the wall-mount remote control).

Mounting

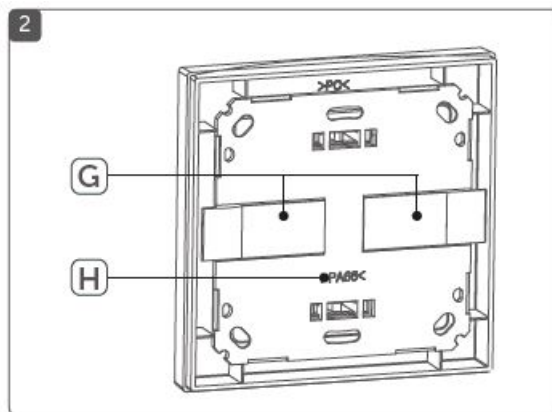
Please read this entire section before starting to mount the device. You can use the supplied clip-on frame (A) to mount the wall-mount remote control or easily integrate it into an existing brand switch system (see „5.2.3 Installation in multiple combinations“ on page 36). If you want to mount the wall-mount remote control with the

supplied clip-on frame, you can use

- the supplied double-sided adhesive strips or
- the supplied screws to fix it to a wall.

Adhesive strip mounting

- For mounting the assembled device with adhesive strips, please proceed as follows:
- Choose a site for installation.
- Make sure that the mounting surface is smooth, solid, non-disturbed, free of dust, grease and solvents and not too cold to ensure long-time adherence.
- Fix the adhesive strips (G) on the back side of the mounting plate (F) in the provided area. You should be able to read the letters on the back side (H) (see Figure 2).

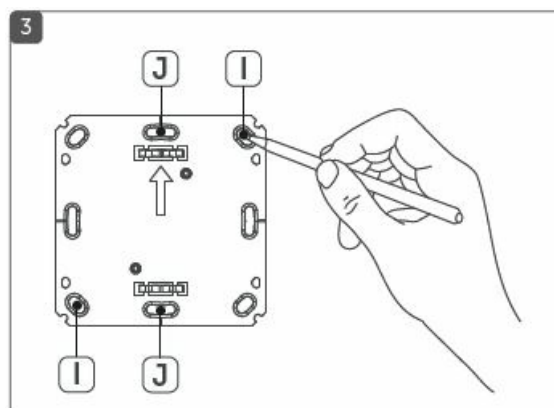


- Remove the protective film from the adhesive strips.
- Press the assembled push button with the back side to the wall in the position where it should subsequently be attached.

Screw mounting

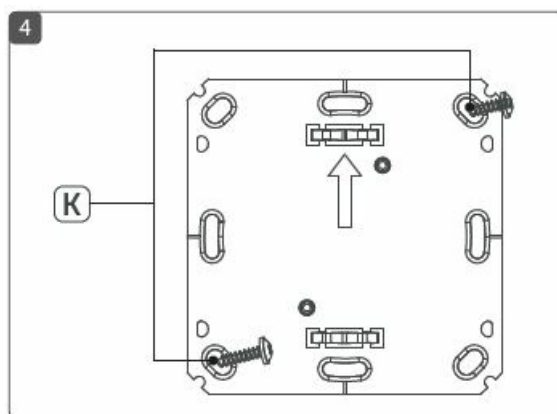
For mounting the wall-mount remote control using screws, please proceed as follows:

- Choose a site for installation.
- Make sure that no electricity or similar lines run in the wall at this location!
- Position the mounting plate (F) on the desired site on the wall. Make sure that the arrow on the mounting plate is pointing upwards.
- Use a pen to mark the positions of bore holes (I)(diagonally opposite) in the mounting plate on the wall (see figure 3).



- The bore holes (J) can be used for installation with a flush-mounting box.

- Now drill the bore holes.
- If you are working with a stone wall, drill the marked 5 mm holes and insert the plugs supplied. If you are working with a wooden wall, you can pre-drill 1.5 mm holes to make screws easier to insert.
- Use the supplied screws and plugs (K) to fasten the mounting plate to the wall (see figure 4).



- Attach the clip-on frame (A) to the mounting plate.
- Place the remote control (B) back into the frame (see figure 1). Make sure that “TOP” and the arrows on the back side point upwards and that the clips on the mounting plate latch into the openings on the remote control.

Installation in multiple combinations

You can mount the wall-mount remote control with the attachment frame (A) provided or use it with frames of other manufacturers as well as integrate the remote control (B) into a multi-gang frame. You can flexibly fix the mounting plate (F) to the wall using adhesive strips or screws. For mounting with multiple combinations, make sure that the mounting plate of the push button is seamlessly aligned to the already fixed mounting plate/retaining ring. The wall-mount remote control is designed to fit into frames supplied by the following manufacturers:

Manufacturer	Frame
Berker	S.1, B.1, B.3, B.7 glass
ELSO	Joy
GIRA	System 55, Standard 55, E2, E22, Event, Esprit
merten	1-M, Atelier-M, M-Smart, M-Arc, M-Star, M-Plan
JUNG	A 500, AS 500, A plus, A creation

Eco mode

In the eco mode, the temperature in the house can be reduced.

- temporarily, e.g. for the weekly shopping,
- scheduled, e.g. for holidays, or
- permanently, for an undefined period of time, in order to save energy.

To adjust the settings of the eco mode, proceed as follows:

- Open the Homematic IP app on your smartphone.
- Tap on the menu symbol in the top left of the screen of your app and select the menu item “Eco mode / Wall-

mount remote control”.

- You can define the rooms for activating the eco mode and lowering the temperature by tapping on “Rooms in eco mode”.
- The temperature for the eco mode can be defined under “Eco temperature”.
- To activate the eco mode via the wall-mount remote control you can define the duration under “Eco duration via wall-mount remote control”.

When leaving home, simply push the Homematic IP Wall-mount Remote Control or slide the switch in the home screen of your app from “Auto” to “Eco” to activate the eco mode.

Replacing batteries

If an empty battery is displayed via the app or the device (see „7.4 Error codes and flashing sequences“ on page 42), replace the used batteries by two new LR03/micro/AAA batteries. You must observe the correct battery polarity. To replace the batteries of the wall-mount remote control, please proceed as follows:

- Once mounted, the remote control can easily be pulled out of the frame (A) or removed from the mounting plate (F). To remove the remote control (B) from the frame, take hold of the sides of the remote control and pull it out (see Figure 5). You do not need to open the device.
- Turn the remote control over to remove the batteries.
- Insert two new 1.5 V LR03/micro/AAA batteries into the battery compartment, making sure that you insert them the right way round (see Figure 6).
- Put the remote control back into the frame. Make sure that “TOP” and the arrows on the back side point upwards and that the clips on the mounting plate latch into the openings on the remote control.
- Please pay attention to the flashing signals of the device LED while inserting the batteries (see „7.4 Error codes and flashing sequences“ on page 42).

Once the batteries have been inserted, the wall-mount remote control will perform a self-test (approx. 2 seconds). Afterwards, initialisation is carried out. The LED test display will indicate that initialisation is complete by lighting up orange and green. Never recharge standard batteries. Do not throw the batteries into a fire. Do not expose batteries to excessive heat. Do not short-circuit batteries. Doing so will present a risk of explosion. Used batteries should not be disposed of with regular domestic waste! Instead, take them to your local battery disposal point.

Troubleshooting

Weak battery

Provided that the voltage value permits it, the wall-mount remote control will remain ready for operation also if the battery voltage is low. Depending on the particular load, it may be possible to send transmissions again repeatedly, once the batteries have been allowed a brief recovery period. If the voltage drops too far during transmission, this will be displayed on the device or via the Homematic IP app (see „7.4 Error codes and flashing sequences“ on page 42). In this case, replace the empty batteries by two new batteries (see „6 Replacing batteries“).

Command not confirmed

If at least one receiver does not confirm a command, the device LED lights up red at the end of the failed transmission process. The failed transmission may be caused by radio interference (see „10 General information about radio operation“ on page 45). This may be caused by the following:

- The receiver cannot be reached.

- The receiver is unable to execute the command (load failure, mechanical blockade, etc.).
- The receiver is defective.

Duty cycle

The duty cycle is a legally regulated limit of the transmission time of devices in the 868 MHz range. This regulation aims to safeguard the operation of all devices working in the 868 MHz range. In the 868 MHz frequency range we use, the maximum transmission time of any device is 1% of an hour (i.e. 36 seconds in an hour). Devices must cease transmission when they reach the 1% limit until this time restriction comes to an end. Homematic IP devices are designed and produced with 100% conformity to this regulation. During normal operation, the duty cycle is not usually reached. However, repeated and radio-intensive teach-in processes mean that it may be reached in isolated instances during start-up or initial installation of a system. If the duty cycle is exceeded, this is indicated by three long flashes of the device LED, and may manifest itself in the device temporarily working incorrectly. The device starts working correctly again after a short period (max. 1 hour).

Error codes and flashing sequences

Flashing code	Meaning	Solution
Short orange flashing	Radio transmis- sion/attempting to transmit	Please wait, until transmission has been co nfirm ed.
1x long green lighting	Transmission confirmed	You can continue operation.
1x long red lighting	Transmission failed	Please try again (s. „7.2 Command not confirmed“ on page 40).
Short orange flashing (every 10 seconds)	Teach-in mode active	Please enter the last four numbers of the d evice serial number to confirm (s. „5.1 Teac hing-in“ on page 32
Short orange lighting (after gre en or red confirmation)	Battery empty	Replace the batteries of the device (see „6 Replacing batteries“ on page 38).
1x long red lighting	Duty cycle exceeded or transmis sion failed	Please try again (see „7.2 Command not confirmed“ on page 40 or „7.3 Duty cycle“ o n page 41).

6x long red flashing	Device defec- tive	Please see your app for error message or c ontact your retailer.
1x orange	Test display	Once the test
and 1 x green		display has stopped,
lighting (after		you can continue.
inserting bat-		
teries)		

Restore factory settings

The factory settings of the device can be restored. If you do this, you will lose all your settings. To restore the factory settings of the wall-mount remote control, please proceed as follows:

- To remove the remote control (B) from the frame, take hold of the sides of the remote control and pull it out (see Figure 5).
- Remove the (old) batteries.
- Insert the batteries ensuring that the polarity is correct (see figure 6) while pressing and holding down the system button (D) for 4s at the same time, until the LED will quickly start flashing orange (see figure 7).
- Release the system button again.
- Press and hold down the system button again for four seconds, until the status LED lights up green.
- Release the system button to finish the procedure. The device will perform a restart.

Maintenance and cleaning

The device does not require you to carry out any maintenance other than replacing the battery when necessary. Enlist the help of an expert to carry out any maintenance or repairs. Clean the device using a soft, lint-free cloth that is clean and dry. You may dampen the cloth a little with lukewarm water in order to remove more stubborn marks. Do not use any detergents containing solvents, as they could corrode the plastic housing and label.

General information about radio operation

Radio transmission is performed on a non-exclusive transmission path, which means that there is a possibility of interference occurring. Interference can also be caused by switching operations, electrical motors or defective electrical devices. The range of transmission within buildings can differ greatly from that available in the open air. Besides the transmitting power and the reception characteristics of the receiver, environmental factors such as humidity in the vicinity have an important role to play, as do on-site structural/ screening conditions. eQ-3 AG, Maiburger Str. 29, 26789 Leer/Germany hereby declares that the radio equipment type HmIP-WRC2-A is in compliance with the Directive 2014/53/EU. The full text of the EU declaration of conformity is available at the following internet address: www.eQ-3.com

Technical specifications

- **Device short description:** HMIP-WRC2-A
- **Supply voltage:** 2x 1.5 V LR03/micro/AAA
- **Current consumption:** 50 mA max.
- **Battery life:** 4 years (typ.)
- **Degree of protection:** IP20
- **Ambient temperature:** 5 to 35 °C
- **Dimensions (W x H x D):**
 - **Without frame:** 55 x 55 x 17 mm
 - **Including frame:** 86 x 86 x 19 mm
- **Weight:** 82 g (incl. batteries)
- **Radio frequency band:** 868.0 – 868.6 MHz 869.4 – 869.65 MHz
- **Maximum radiated power:** 10 dBm
- **Receiver category:** SRD category 2
- **Typ. open area RF range:** 200 m
- **Duty cycle:** < 1 % per h / < 10 % per h

Subject to technical changes. Instructions for disposal

Do not dispose of the device with regular domestic waste! Electronic equipment must be disposed of at local collection points for waste electronic equipment in compliance with the Waste Electrical and Electronic Equipment

Directive.

Information about conformity

The CE sign is a free trading sign addressed exclusively to the authorities and does not include any warranty of any properties. For technical support, please contact your retailer.


Kostenloser Download der Homematic IP App! Free download of the Homematic IP app!



Manufacturer's authorised representative

- **eQ-3 AG** Maiburger Straße 29 26789 Leer / GERMANY www.eQ-3.de

Documents / Resources

	<p>homematic IP HMIP-WRC2-A Wall Mount Remote Control Button [pdf] Instruction Manual HMIP-WRC2-A Wall Mount Remote Control Button, HMIP-WRC2-A, Wall Mount Remote Control Button, Mount Remote Control Button, Remote Control Button, Control Button, Button</p>
---	---

References

- [e Start - eQ-3](#)
- [e Startseite - eQ-3](#)
- [User Manual](#)

