


homematic 
**HmIP-WLAN-
HAP-B
Access Point
Basic**



homematic IP HmIP-WLAN-HAP-B Access Point Basic Instruction Manual

[Home](#) » [Homematic IP](#) » homematic IP HmIP-WLAN-HAP-B Access Point Basic Instruction Manual 

Contents

- 1 homematic IP HmIP-WLAN-HAP-B Access Point Basic
- 2 Package contents
- 3 Information about this manual
- 4 Hazard information
- 5 Function and device overview
- 6 Start-up
- 7 Troubleshooting
- 8 Restore factory settings
- 9 General information about radio operation
- 10 Disposal
- 11 Technical specifications
- 12 Documents / Resources
 - 12.1 References
- 13 Related Posts

homematic 

homematic IP HmIP-WLAN-HAP-B Access Point Basic



Documentation © 2020 eQ-3 AG, Germany

All rights reserved. Translation from the original version in German. This manual may not be reproduced in any format, either in whole or in part, nor may it be duplicated or edited by electronic, mechanical or chemical means, without the written consent of the publisher.

Typographical and printing errors cannot be excluded. However, the information contained in this manual is reviewed on a regular basis and any necessary corrections will be implemented in the next edition. We accept no liability for technical or typographical errors or the consequences thereof.

All trademarks and industrial property rights are acknowledged.

Changes may be made without prior notice as a result of technical advances.

161266 (web) | Version 1.1 (09/2024)

Package contents

- 1x Homematic IP WLAN Access Point – basic
- 1x USB mains adapter (5 VDC, 550 mA)
- 1x User manual

Information about this manual

Read this manual carefully before beginning operation with your Homematic IP components. Keep the manual so you can refer to it at a later date if you need to. If you hand over the device to other persons for use, hand over this manual as well.

Symbols used:



Attention!

This indicates a hazard.



Please note: This section contains important additional information.

Hazard information

- We do not assume any liability for damage to property or personal injury caused by improper use or the failure to observe the hazard information. In such cases any claim under warranty is extinguished!
- For consequential damages, we assume no liability!

- Do not use the device if there are signs of damage to the housing, control elements or connecting sockets, for example, or if it demonstrates a malfunction.
If you have any doubts, please have the device checked by an expert.
- Do not open the device. It does not contain any parts that can be maintained by the user. In the event of an error, have the device checked by an expert.
- For safety and licensing reasons (CE), unauthorized change and/or modification of the device is not permitted.
- The device may only be operated indoors and must be protected from the effects of moisture, vibrations, solar or other methods of heat radiation, cold and mechanical loads.
- The device is not a toy; do not allow children to play with it. Do not leave packaging material lying around. Plastic films/bags, pieces of polystyrene, etc. can be dangerous in the hands of a child.
- For power supply, only use the original power supply unit (5 VDC/550 mA) delivered with the device.
- The device may only be connected to an easily accessible power socket outlet. The mains plug must be pulled out if a hazard occurs.
- Always lay cables in such a way that they do not become a risk to people and domestic animals.
- The device may only be operated within residential buildings.
- Using the device for any purpose other than that described in this operating manual does not fall within the scope of intended use and shall invalidate any warranty or liability.

Function and device overview

The Homematic IP Access Point – basic is the central element of the Homematic IP smart home system and communicates with the Homematic IP radio protocol.

It connects smartphones via the Homematic IP cloud with all Homematic IP devices and transmits configuration data and control commands from the app to all Homematic IP devices.

The wireless connection to the network allows the Homematic IP Access Point – basic to be installed flexibly. All devices of the Homematic IP system can be configured comfortably and individually with a smartphone via the Homematic IP app. The available functions provided by the Homematic IP system in combination with other components are described in the Homematic IP User Guide.

All current technical documents and updates are provided at www.homematic-ip.com.

Device overview:

- **(A)** System button and LED
- **(B)** QR code, device number (SGTIN) and password
- **(C)** Micro USB port

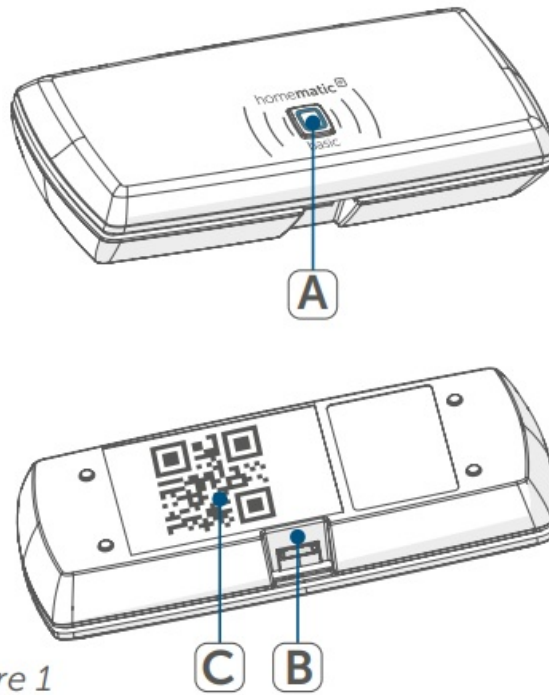


Figure 1

Start-up

First install the Homematic

IP app on your smartphone and set up your Homematic IP Access Point – basic as described in the following section.

Once your device has been set up successfully, you can add and integrate new Homematic IP devices to your system.

System requirements

Router

A WLAN router (2.4 GHz) with network and Internet connection is required for setup and configuration of the devices.

Smartphone app

Setup and operation are flexible and intuitive via smartphone using the Homematic IP cloud in combination with the free Homematic IP app.

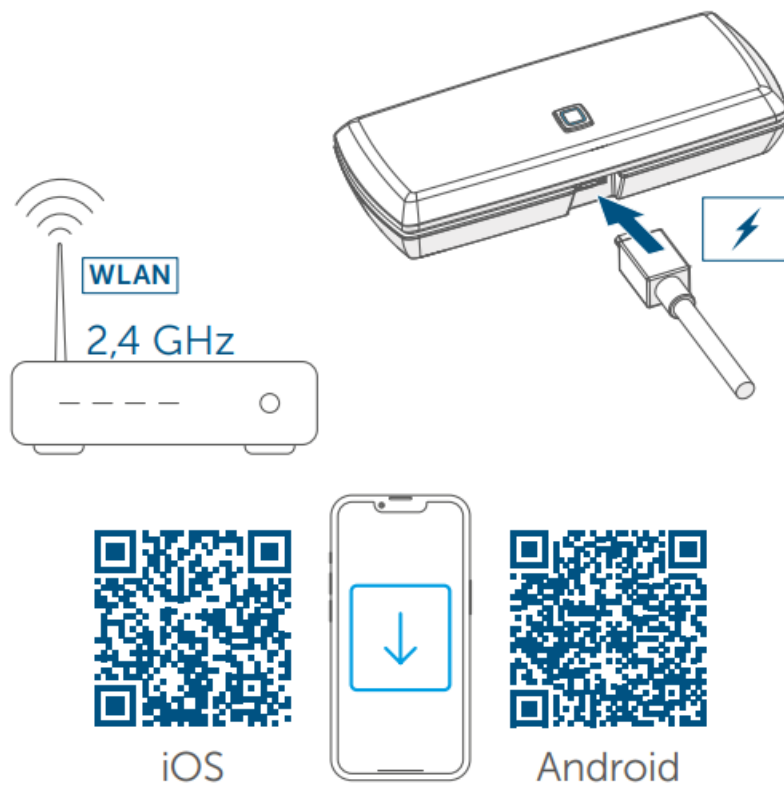


Figure 2

Set-up and Transmission of WLAN access data

Please read this entire section before starting to configure the WLAN access data.

During and after installation, keep a minimum distance of 1 m to your router.

Make sure that the scratch field on the back of the device has not been damaged before first use and that the QR code or text below it is not completely visible.

If the scratch field has been damaged, please contact your specialist retailer.

For installation of the Homematic IP Access Point – basic you will need the free Homematic IP app for Android and iOS. Download the app in the respective app store and install it on your smartphone.

For transmission of the WLAN access data the Homematic IP Access Point – basic provides its own WLAN network, to which the smartphone must be connected in order to transmit the access data.

- Scratch off the QR Code sticker (B) and the text on the back of the device completely.

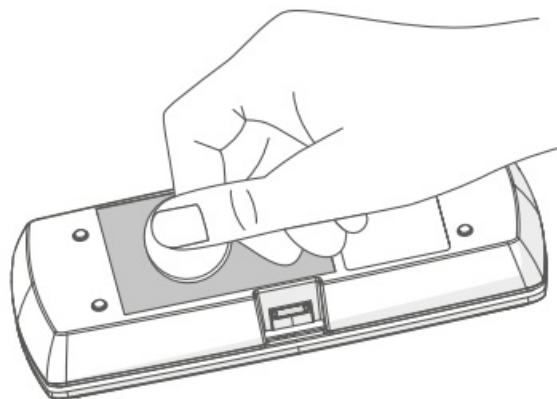


Figure 3

- Start the Homematic IP app on your smartphone.
- Follow the instructions in the app to set up the Homematic IP Access Point – basic.
- Scan the QR code on the back side of the device.



Figure 4

- Alternatively, you can enter the SGTIN and key of the device sticker manually into the app.

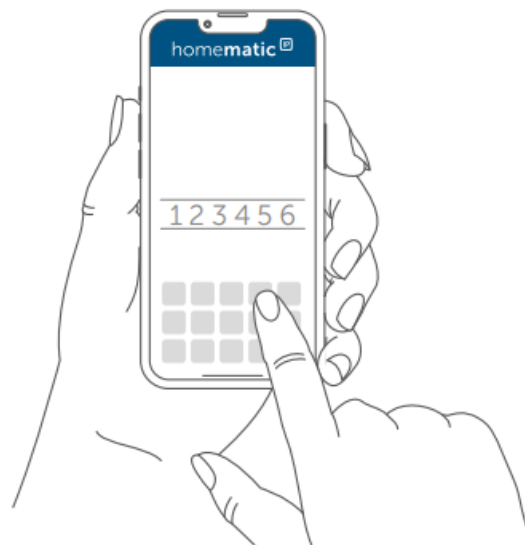


Figure 5

If you have entered the data of the device sticker manually, you are now asked to enter the password (PW).

- Connect the supplied USB plug-in power supply unit to the interface (C)) and to a mains socket.

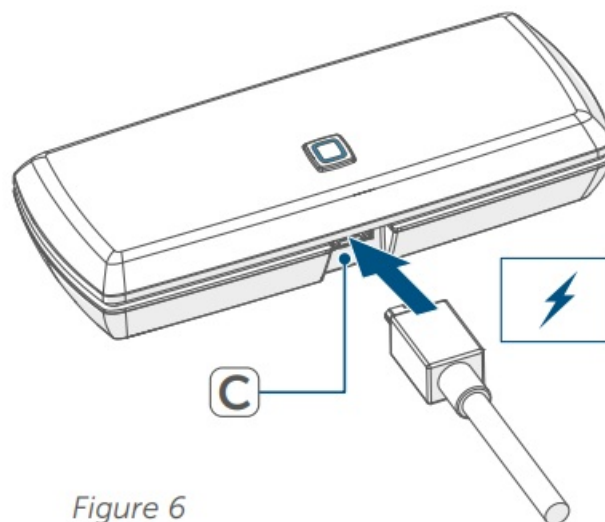


Figure 6

- For the transmission of data, the LED (A) of the Homematic IP Access Point – basic has to light up permanently magenta. If the LED of the Homematic IP Access Point – basic lights yellow, press the system button.

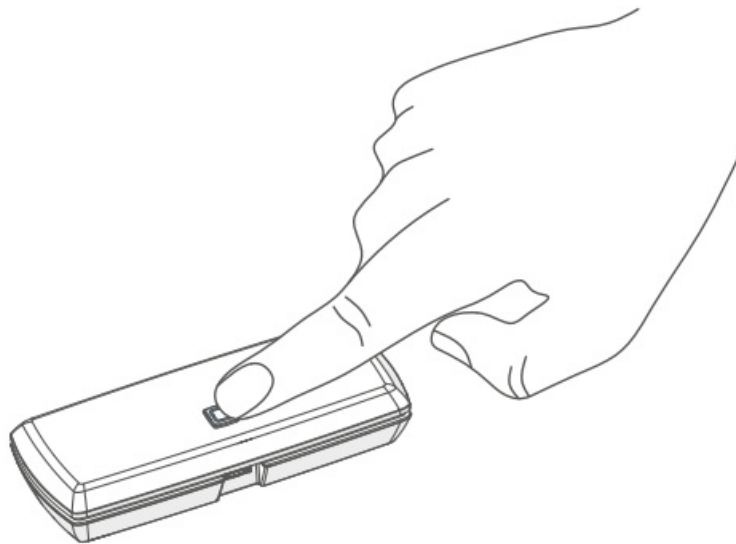


Figure 7

- Connect your smartphone to the following WLAN network which has been opened by the Access Point – basic:
Name (SSID): HmIP-WLAN-HAP-B xxxx (xxxx = last four digits of the device number/SGTIN, no password required)
- Start the transmission.
- Transmission of the WLAN access data has been successful, if the LED changes from magenta to yellow flashing.
- After successful transmission, the Homematic IP Access Point – basic automatically connects to the WLAN network and the server.

If the LED lights up permanently blue, the server connection has successfully been connected. Connect your smartphone again to the WLAN network to which the Homematic IP Access Point – basic has been connected. Continue with chapter (see „5.3 Finishing set-up“).

If the LED lights up differently, please follow the instructions in the app or (see „6.4 Error codes and flashing sequences“).

Finishing set-up

- Confirm in the app, that the LED (A) of your Homematic IP Access Point – basic lights up permanently blue.
- The Homematic IP Access Point – basic is registered to the server.
This may take a few minutes. Please wait.
- After successful registration, shortly press the system button (A) of your Homematic IP Access Point – basic for confirmation.
- Pairing will be carried out.
- The Homematic IP Access Point – basic is now set up and ready for use.

After the Homematic

IP Access Point – basic has been set-up successfully, you can teach-in additional Homematic IP devices. For further information, please refer to the operating manual of the corresponding device.
For further information about operation via the app and configuration of the Homematic IP system, please refer to the Homematic IP User Guide (available in the download area at www.homematic-ip.com).

Troubleshooting

Command not confirmed

If at least one receiver does not confirm a command, this may be caused by radio interference (see „9 General information about radio operation). The error will be displayed in the app and may be caused by the following:

- Receiver cannot be reached
- Receiver is unable to execute the command (load failure, mechanical blockade, etc.)
- Receiver is defective

Duty Cycle

The duty cycle is a legally regulated limit of the transmission time of devices in the 868 MHz range. The aim of this regulation is to safeguard the operation of all devices working in the 868 MHz range. In the 868 MHz frequency range we use, the maximum transmission time of any device is 1% of an hour (i.e. 36 seconds in an hour). Devices must cease transmission when they reach the 1% limit until this time restriction comes to an end.

Homematic IP devices are designed and produced with 100% conformity to this regulation.

During normal operation, the duty cycle is not usually reached. However, repeated and radio-intensive pair processes mean that it may be reached in isolated instances during start-up or initial installation of a system. If the duty cycle limit is exceeded, the device may stop working for a brief period.

The device starts working correctly again after a short period (max. 1 hour).

WLAN frequency range

The Homematic IP Access Point – basic works in the 2.4 GHz frequency range. Operation in 5 GHz frequency range is not possible. Therefore, make sure that your smartphone is in 2.4 GHz frequency range while setting up the Homematic IP Access Point –basic. If this is not the case, deactivate the 5 GHz frequency range of your WLAN router during setup.

Error codes and flashing sequences

Flashing code	Meaning	Solution
Permanent orange lighting	Homematic IP Access Point – basic starts	Wait shortly and observe the subsequent flashing behaviour.
Fast blue flashing	Connection to the server is being established	Wait until the connection is established and the LED lights permanently blue.
Permanent blue lighting	Normal operation, connection to server is established	You can continue operation.
Fast yellow flashing	No connection to network or WLAN router	Check your network or the WLAN router and follow the instructions according to (see „5.2 Set-up “) .
Permanent yellow lighting	No Internet connection	Please check the Internet connection and firewall settings.
Permanent magenta lighting	Mode for transmission of the WLAN access data	Configure the WLAN access data (see „5.2 Set-up“)
Alternately long and short orange flashing	Update in progress	Please wait until the update has been completed
Fast red flashing	Error during update	Please check the server and Internet connection. Restart the device.
Fast orange flashing	Stage before restoring the factory settings	Press and hold down the system button again for 4 seconds, until the LED lights up green.
1x long green lighting	Reset confirmed	You can continue operation.
1x long red lighting	Reset failed	Please try again.

Restore factory settings

The factory settings of your Homematic

IP Access Point – basic and of the entire installation can be restored. The operations distinguish as follows:

- Resetting the Access Point – basic: Here, only the factory settings of the Access Point – basic will be restored. The entire installation will not be deleted.
- Resetting and deleting the entire installation:
Here, the entire installation is reset. Afterwards, the app has to be uninstalled and reinstalled. The factory settings of your single Homematic IP devices have to be restored to enable them to be connected again.

Resetting the Homematic IP Access Point – basic

To restore the factory settings of the Homematic

IP Access Point – basic, proceed as follows:

- Disconnect the Access Point – basic from the power supply.
Therefore, unplug the USB mains adapter.
- Plug-in the USB mains adapter again and press and hold down the system button (A) for 4s, until the LED (A)

will quickly start flashing orange.

- Release the system button again.
- Press and hold down the system button again for 4 seconds, until the LED lights up green. If the LED lights up red, please try again.
- Release the system button to finish the procedure.

The device will perform a restart and Access Point is being reset.

Resetting and deleting the entire installation

To reset the factory settings of the entire installation, the procedure described above must be performed twice in succession, within 5 minutes:

- Reset the Access Point – basic as described above.
- Wait at least 10 seconds until the LED (A) permanently lights up blue.
- Immediately afterwards, perform the reset for the second time by disconnecting the Access Point – basic from the power supply again and repeating the previously described steps.

After the second restart, your system will be reset.

Maintenance and cleaning

The device does not require you to carry out any maintenance.

Enlist the help of an expert to carry out any maintenance or repairs.

Clean the device using a soft, lint-free cloth that is clean and dry. You may dampen the cloth a little with lukewarm water in order to remove more stubborn marks. Do not use any detergents containing solvents, as they could corrode the plastic housing and label.

General information about radio operation

Radio transmission is performed on a non-exclusive transmission path, which means that there is a possibility of interference occurring. Interference can also be caused by switching operations, electrical motors or defective electrical devices.

The range of transmission within buildings can differ greatly from that available in the open air. Besides the transmitting power and the reception characteristics of the receiver, environmental factors such as humidity in the vicinity have an important role to play, as do on-site structural/screening conditions.

Hereby, eQ-3 AG, Maiburger Str. 29, 26789 Leer/Germany declares that the radio equipment type Homematic IP HmIP-WLAN-HAP-B is in compliance with Directive 2014/53/EU. The full text of the EU declaration of conformity is available at the following internet address: www.homematic-ip.com

Disposal

Instructions for disposal



This symbol means that the device must not be disposed of as household waste, general waste, or in a yellow bin or a yellow sack.

For the protection of health and the environment, you must take the product and all electronic parts included in the scope of delivery to a municipal collection point for old electrical and electronic equipment to ensure their correct disposal. Distributors of electrical and electronic equipment must also take back obsolete equipment free of charge.

By disposing of it separately, you are making a valuable contribution to the reuse, recycling and other methods of recovery of old devices.

Please also remember that you, the end user, are responsible for deleting personal data on any old electrical and electronic equipment before disposing of it.

Information about conformity

The CE mark is a free trademark that is intended exclusively for the authorities and does not imply any assurance of properties.

For technical support, please contact your retailer.

Technical specifications


- **Device short name:** HmIP-WLAN-HAP-B
- **Supply voltage:** 5 VDC
- **Supply voltage plug-in mains adapter (input):** 100 V-240 V/50 Hz
- **Current consumption:** 400 mA max./80 mA (typ.)
- **Standby power consumption:** 400 mW
- **Degree of protection:** IP20
- **Ambient temperature:** 5 to 35 °C
- **Dimensions (W x H x D):** 100 x 40 x 19 mm
- **Weight:** 40 g
- **Radio frequency band:** 868.0-868.6 MHz 869.4-868.65 MHz
- **Maximum radiated power:** 10 dBm
- **Receiver category:** SRD category 2
- **Typ. open area RF range:** 250 m
- **Duty cycle:** < 1 % per h/< 10 % per h
- **WLAN:** IEEE 802.11 b/g/n 2.4 GHz
- **Maximum radiated power WLAN:** 20 dBm

Subject to technical changes.

Kostenloser Download der Homematic IP App!
Free download of the Homematic IP app



Documents / Resources

	<p>homematic IP HmIP-WLAN-HAP-B Access Point Basic [pdf] Instruction Manual HmIP-WLAN-HAP-B Access Point Basic, HmIP-WLAN-HAP-B, Access Point Basic, Point Basic, Basic</p>
---	---

References

- [User Manual](#)

Manuals+, Privacy Policy

This website is an independent publication and is neither affiliated with nor endorsed by any of the trademark owners. The "Bluetooth®" word mark and logos are registered trademarks owned by Bluetooth SIG, Inc. The "Wi-Fi®" word mark and logos are registered trademarks owned by the Wi-Fi Alliance. Any use of these marks on this website does not imply any affiliation with or endorsement.