



Homematic IP HmIP-KRCK Key Ring Remote Control User Manual

[Home](#) » [Homematic IP](#) » Homematic IP HmIP-KRCK Key Ring Remote Control User Manual 

homematic

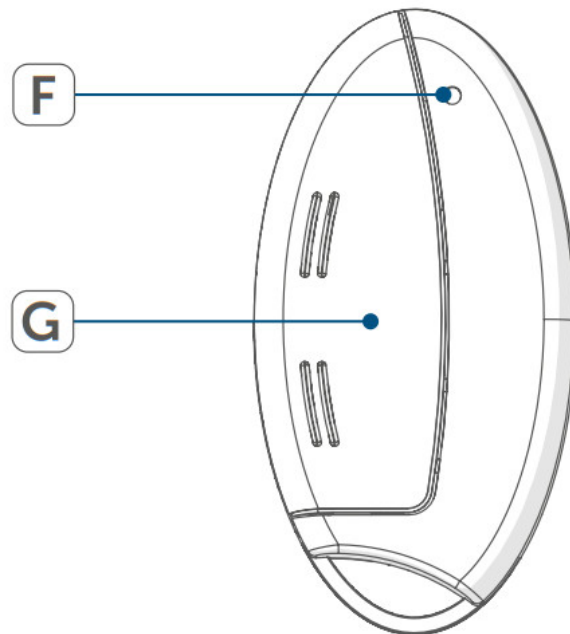
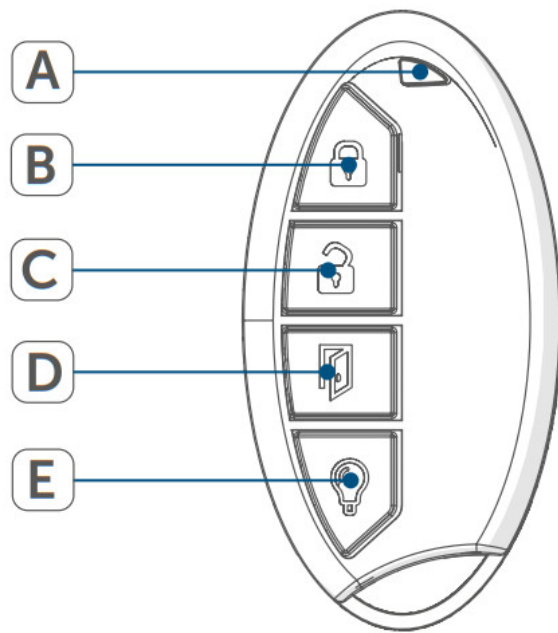
Bedienungsanleitung

User manual

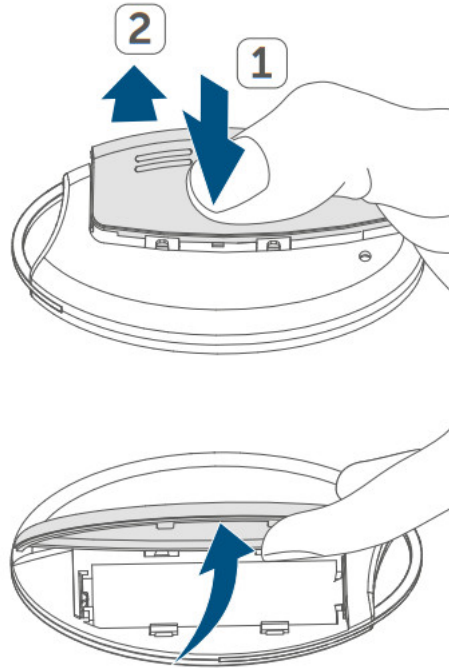
Key Ring Remote Control –access control



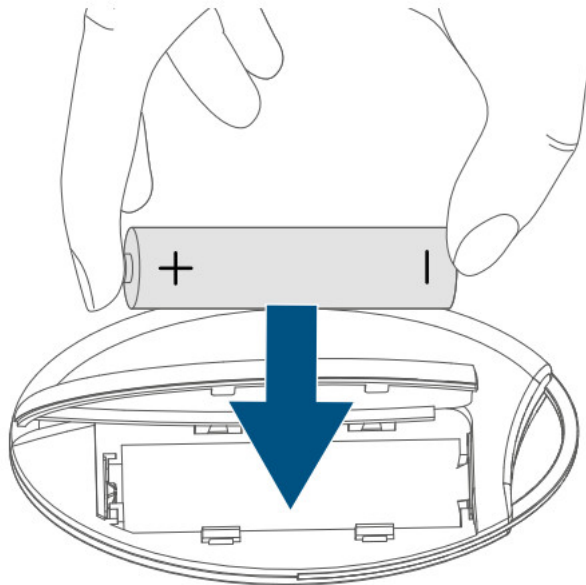
HYIP-KRCK



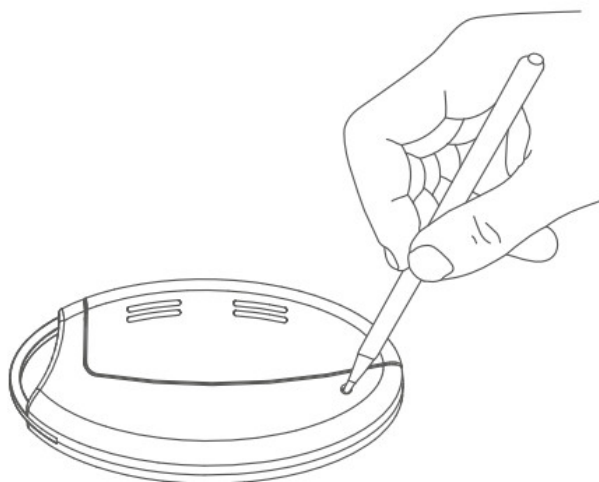
2



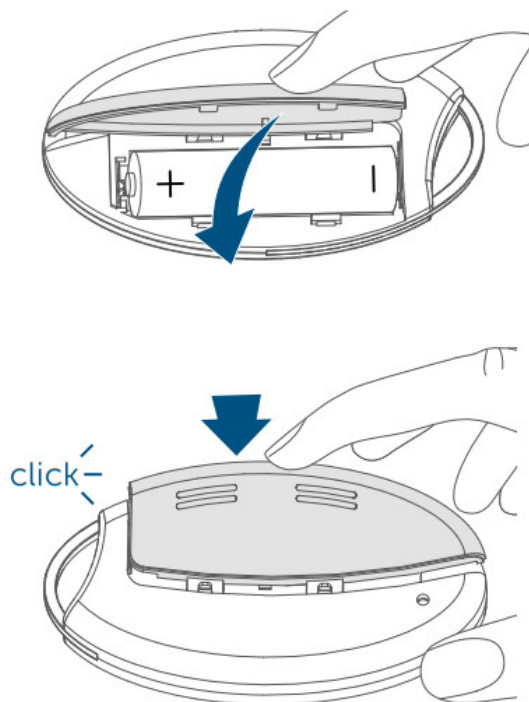
3



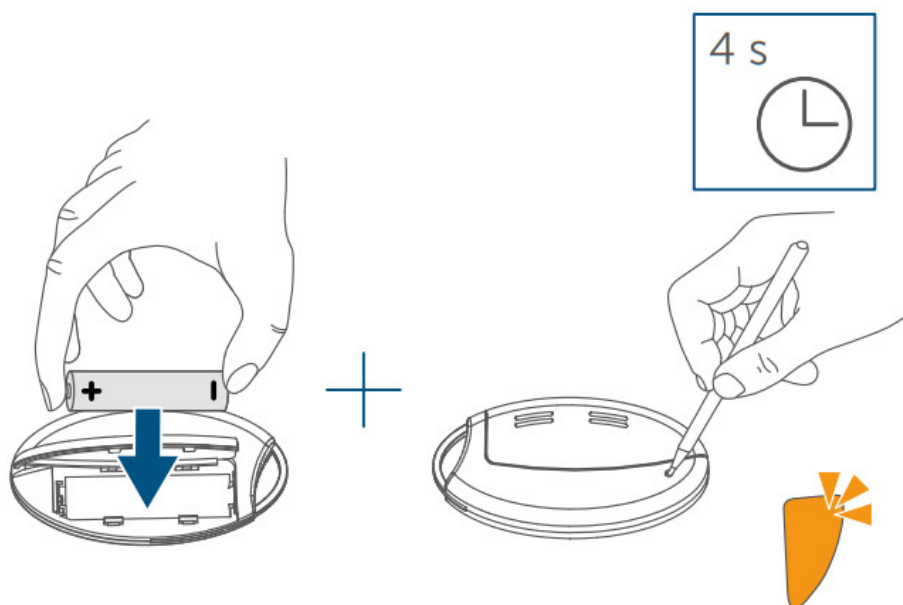
4



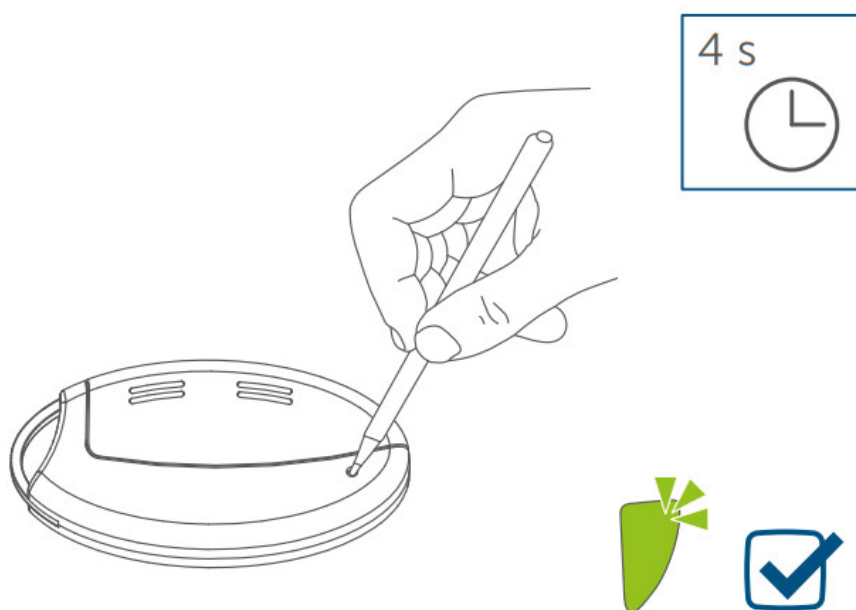
5



6



7



Contents

- 1 Information about this manual
- 2 Hazard information
- 3 Function and device overview
- 4 General system information
- 5 Start-up
- 6 Operation
- 7 Changing battery
- 8 Troubleshooting
 - 8.1 Weak battery
 - 8.2 Command not confirmed
 - 8.3 Duty cycle
 - 8.4 Error codes and flashing sequences
- 9 Restore factory settings
- 10 Maintenance and cleaning
- 11 General information about radio operation
- 12 Technical specifications
 - 12.1 Subject to technical changes.
- 13 Documents / Resources
 - 13.1 References
- 14 Related Posts

Information about this manual

Read this manual carefully before beginning operation with your Homematic IP components. Keep the manual so you can refer to it at a later date if you need to.

If you hand over the device to other persons for use, hand over this manual as well.

Symbols used:



Attention!

This indicates a hazard.



Please note:

This section contains important additional information.

Hazard information



Do not open the device. It does not contain any parts that can be maintained by the user. In the event of an error, have the device checked by an expert?



For safety and licensing reasons (CE), unauthorized change and/or modification of the device is not permitted.



The device may only be operated in a dry and dust-free environment and must be protected from the effects of moisture, vibrations, solar or other methods of heat radiation, excessive cold, and mechanical loads.



The device is not a toy; do not allow children to play with it. Do not leave packaging material lying around. Plastic films/bags, pieces of polystyrene, etc. can be dangerous in the hands of a child.



We do not assume any liability for damage to property or personal injury caused by improper use or the failure to observe the hazard information. In such cases, any claim under warranty is extinguished! For consequential damages, we assume no liability!



The device may only be operated within residential buildings.



Using the device for any purpose other than that described in this operating manual does not fall within the scope of intended use and shall invalidate any warranty or liability.

Function and device overview

The Homematic IP Key Ring Remote Control – access control allows you to control your Homematic IP Door Lock Drive. At the push of a button, a door can be opened, locked, or unlocked via the door lock drive. The “light” button can be used to switch individually defined light sources on or off.

Device overview (see figure 1):

- (A) Device LED
- (B) Button 1 “Lock” (button pair 1)
- (C) Button 2 “Unlock” (button pair 1)
- (D) Button 3 “Open door” (single button)
- (E) “Light” (on/off) button1
- (F) System button
- (G) Battery compartment (and cover)

1) Button “Light” switches connected devices: Short button press device “on”, long button press device “off”.

General system information

This device is part of the Homematic IP smart home system and works with the Homematic IP radio protocol. All devices of the system can be configured comfortably and individually with the Homematic IP smartphone app. Alternatively, you can operate the Homematic IP devices via the Central Control Unit CCU2/CCU3 or in connection with various partner solutions. The available functions provided by the system in combination with other components are described in the Homematic IP User Guide. All current technical documents and updates are provided at www.homematic-ip.com.

Start-up



Please read this entire section before starting to use the device.



You can connect the device either to the Access Point or to the Homematic Central Control Unit CCU2/CCU3. For detailed information about teach-in or configuration via a control unit, please refer to the Homematic IP User Guide, available for download in the download area of www.homematic-ip.com.



First set up your Homematic IP Access Point via the Homematic IP app to enable the operation of other Homematic IP devices within your system.

For further information, refer to the operating manual of the Access Point.

To integrate the keyring remote control into your system and enable it to communicate with other Homematic IP devices, you must teach in the device to your Homematic IP Access Point first.

To connect it, proceed as follows:

- Open the Homematic IP app on your smartphone.
- Select the menu item “Teach-in device”.
- Open the battery compartment (G) at the rear by pushing the battery compartment cover away from the device. You will need to apply some pressure to do this (see figure 2). • This will open the catch and the battery compartment cover can be opened (the cover remains attached to the housing).
- Remove the insulation strip from the battery compartment (H) of the keyring remote control (first set-up) or insert a new battery to activate the device (see figure 3). Teach-in mode remains activated for 3 minutes.



You can manually start the teach-in mode for another 3 minutes by pressing the system button (F) shortly (see figure 3).

- Your device will automatically appear in the Homematic IP app.
- To confirm, enter the last four digits of the device number (SGTIN) in your app or scan the QR code. Therefore, see the sticker supplied or attached to the device.
- Wait until the connection is completed.
- If teaching-in was successful, the device LED (A) lights up green. The device is now ready for use.



If the device LED lights up red, please try again.

- In the app, give the device a name and allocate it to a room.

Operation

Once you have connected the Homematic IP Key Ring Remote Control to the Access Point, you can control the access control functions in combination with the Homematic IP Door Lock Drive. The following functions are possible:

Button “Lock” (B):

Locks the door via the Homematic IP Door Lock Drive.

Button “Unlock” (C):

Unlocks the door via the Homematic IP Door Lock Drive.

Button “Open door” (D):

Opens the door via the Homematic IP Door Lock Drive.

Button “Light” (E):

Switches individually defined light sources in connection with a Homematic IP Switch or Dimming Actuator on via a short button press or off via a long button press.

Changing battery

If the battery symbol is displayed via the app or an empty battery is indicated on the device (see „8.4 Error codes and flashing sequences“ on page 36), replace the used battery with a new LR03/micro/AAA battery. You must observe the correct battery polarity.

To replace the battery of the keyring remote control, please proceed as follows:

- Open the battery compartment (G) at the rear by pushing the battery compartment cover away from the device. You will need to apply some pressure to do this (see figure 2).
- This will open the catch and the battery compartment cover can be opened (the cover remains attached to the housing).
- Insert a new 1.5 V LR03/micro/battery into the battery compartment, making sure that it is the right way round (see figure 4).
- Close the battery compartment by swinging the battery compartment cover back on. Push the cover towards the center of the housing (applying a little pressure) until it latches into place.

Once the battery has been inserted, the keyring remote control performs a self-test (approx. 2 seconds). Afterward, initialization is carried out. The LED test display will indicate that initialization is complete by lighting up orange and green (see sec. „8.4 Error codes and flashing sequences“ on page 36).



Never recharge standard batteries. Do not throw the batteries into a fire! Do not expose batteries to excessive heat. Do not short-circuit batteries. Doing so will present a risk of explosion.



Used batteries should not be disposed of with regular domestic waste! Instead, take them to your local battery disposal point.

Troubleshooting

Weak battery

Provided that the voltage value permits it, the keyring remote control will remain ready for operation also if the battery voltage is low. Depending on the particular load, it may be possible to send transmissions again repeatedly, once the batteries have been allowed a brief recovery period.

If the battery voltage is too weak, this will be displayed in the Homematic IP app and directly on the device via the device LED (A) (see „8.4 Error codes and flashing sequences“ on page 36). In this case, replace the empty battery with a new one (see „7 Changing battery“ on page 32).

Command not confirmed

If at least one receiver does not confirm a command, the device LED lights up red at the end of the failed transmission process (depending on the reason, the LED can light up with a delay of up to 10 s). The failed transmission may be caused by radio interference (see „11 General information about radio operation“ on page 39). This may be caused by the following:

- Receiver cannot be reached.
- The receiver is unable to execute the command (load failure, mechanical blockade, etc.).
- The receiver is defective.

Duty cycle

The duty cycle is a legally regulated limit of the transmission time of devices in the 868 MHz range. The aim of this regulation is to safeguard the operation of all devices working in the 868 MHz range.

In the 868 MHz frequency range we use, the maximum transmission time of any device is 1% of an hour (i.e. 36 seconds in an hour). Devices must cease transmission when they reach the 1% limit until this time restriction comes to an end. Homematic IP devices are designed and produced with 100% conformity to this regulation. During normal operation, the duty cycle is not usually reached. However, repeated and radio-intensive teaching

processes mean that it may be reached in isolated instances during start-up or initial installation of a system. If the duty cycle is exceeded when pressing a button, this is indicated by one long red lighting of the device LED (A), and may manifest itself in the device temporarily working incorrectly. The device starts working correctly again after a short period (max. 1 hour).

Error codes and flashing sequences

Flashing code	Meaning	Solution
Fast orange flashing	Radio transmission /configuration data is transmitted	Wait until the transmission is completed.
1x long green lighting	Transmission confirmed	You can continue operation.
1x long red lighting	Transmission failed or duty cycle limit is reached	Please try again (see sec. „8.2 Command not confirmed“ on page 34 or „8.3 Duty cycle“ on page 35).
Short orange flashing (every 10 s)	Teach-in mode active (for 3 minutes)	Please enter the last four numbers of the device serial number to confirm (see „5 Start-up“ on page 29).
Short orange lighting (after green or red confirmation)	Battery empty	Replace the batteries of the device (see „7 Changing battery“ on page 32).

2x red and 1x orange flashing (7 x repeating after a short pause)	Activation of alarm mode not possible due to missing Internet or cloud connection	Re-establish the Internet or cloud connection.
1x red and 1x orange flashing (7 x repeating after a short pause)	Activation or alarm mode is not possible, as one or more sensors in an unsafe status	Check the status of the sensors
6x long red flashing	Device defective	Have a look at your app for error messages or contact your retailer.
1x orange and 1 x green lighting (after inserting batteries)	Test display	Once the test display has stopped, you can continue.
Long and short orange flashing (alternating)	Update of device software (OTA U)	Wait until the update is completed.

Restore factory settings

The factory settings of the device can be restored. If you do this, you will lose all your settings.

To restore the factory settings of the keyring remote control, please proceed as follows:

- Open the battery compartment (G) at the rear by pushing the battery compartment cover away from the device. You will need to apply some pressure to do this (see figure 2).
- This will open the catch and the battery compartment cover can be opened (the cover remains attached to the housing).
- Remove a battery.
- Insert the battery ensuring that the polarity is correct (see figure 4) while pressing and holding down the system button (F) for 4s with a pointed object (e.g. a pen) at the same time until the device LED (A) will quickly start flashing orange (see figure 5).
- Release the system button again.
- Press and hold down the system button again for 4s (see figure 5), until the device LED lights up green.
- Release the system button to finish the procedure.

The device will perform a restart.

Maintenance and cleaning

The device does not require you to carry out any maintenance other than replacing the battery when necessary. Enlist the help of an expert to carry out any maintenance or repairs.

Clean the device using a soft, lint-free cloth that is clean and dry. You may dampen the cloth a little with lukewarm water in order to remove more stubborn marks. Do not use any detergents containing solvents, as they could corrode the plastic housing and label.

General information about radio operation

Radio transmission is performed on a non-exclusive transmission path, which means that there is a possibility of interference occurring. Interference can also be caused by switching operation



The range of transmission within buildings can differ greatly from that available in the open air. Besides the transmitting power and the reception characteristics of the receiver, environmental factors such as humidity in the vicinity have an important role to play, as do on-site structural/ screening conditions, electrical motors, or defective electrical devices.

Hereby, eQ-3 AG, Marburger Str. 2 9, 26789 Leer/Germany declares that the radio equipment type Homematic IP HmIP-KRCK is in compliance with Directive 2014/53/ EU. The full text of the EU declaration of conformity is available at the following internet address: www.homematic-ip.com

Technical specifications

Device short name:	HYIP-KRCK
Supply voltage:	1x 1.5 V LR03/micro/AAA
Current consumption:	100 mA max.
Battery life:	2 years (Typ.)
Degree of protection:	IP20
Ambient temperature:	-10 to +55 °C
Dimensions (W x H x D):	38 x 75 x 14 mm
Weight:	38 g (incl. batteries)
Radio frequency band:	868.0-868.6 MHz 869.4-869.65 MHz
Maximum radiated power: Receiver category:	10 dBm
Receiver category:	SRD category 2
Typ. open area RF range:	200 m
Duty cycle:	< 1 % per h/< 10 % per h

Subject to technical changes.

Instructions for disposal



Do not dispose of the device with regular domestic waste! Electronic equipment must be disposed of at local collection points for waste electronic equipment in compliance with the Waste Electrical and Electronic Equipment Directive.

Information about conformity



The CE sign is a free trading sign addressed exclusively to the authorities and does not include any warranty of any properties.



For technical support, contact your specialist dealer.

Kostenloser Download der Homematic IP App!
Free download of the Homematic IP app!



<https://play.google.com/store/apps/details?id=de.eq3.psc.android&hl>

<https://itunes.apple.com/de/app/homematic-ip/id1012842369?mt=8>

**Bevollmächtigter des Herstellers:
Manufacturer's authorised representative:**

eQ-3

eQ-3 AG

Maiburger Straße 29

26789 Leer / GERMANY

www.eQ-3.de

Documents / Resources



[Homematic IP HmIP-KRCK Key Ring Remote Control](#) [pdf] User Manual
HmIP-KRCK, Key Ring Remote Control, HmIP-KRCK Key Ring Remote Control

References

- [e Startseite - eQ-3](#)
- [IP Home page | Homematic IP](#)